

Systemair SPI-F

Installation instruction/Installationsinstruktion



Cleaning

By adjusting the damper Systemair SPI-F to open position it is possible to clean inside of the duct. Remember to adjust the damper after cleaning.

Adjustment

The damper is delivered in open position. It is therefore necessary to adjust max- and min position, see below.

Rengöring

Genom att ställa spjället i öppet läge kommer man åt att rensa inne i kanalen.
Kom ihåg att återställa spjället efter rensning!

Injustering

Spjället är vid leverans ställt i öppet läge. Det är nödvändigt att ställa in max- och min-lägen för flödet, se nedan.

Example

Formula

$$k \cdot \sqrt{P_i} = q$$

q = airflow
k = K-factor
P_i = adjustment pressure

Using the formula to calculate airflow

Size SPI-F-160
Pressure 30Pa
K-factor (from label) 17,1

Used in the formula:

$$17,1 \cdot \sqrt{30} = 93,7$$

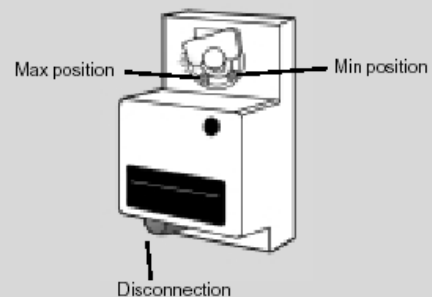
The airflow is then 93,7 l/s.

Adjustment

Disconnect the engine and move the damper by hand. Connect the hoses into the dampers measure nipples and measure the pressure.

Calculate the airflow and change the damper until max airflow is achieved. Fix the max airflow by tightening the left screw.

Do then the same thing for the min air flow and fix the position with the right screw.



Exempel

Formel

$$k \cdot \sqrt{P_i} = q$$

q = flöde
k = K-faktor
P_i = injusteringstryck

Kontrollering av flödet

Storlek SPI-F 160
Tryck (uppmätt) 30 Pa
K-faktor (från etiketten) 17,1

Sätt in det i formeln:

$$17,1 \cdot \sqrt{30} = 93,7$$

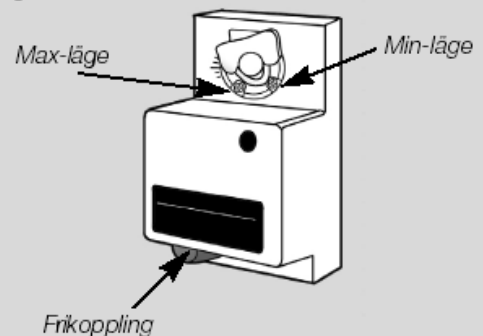
Flödet är i det här fallet 93,7 l/s.

Injustering

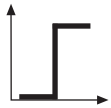
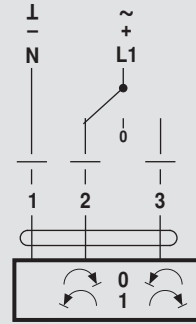
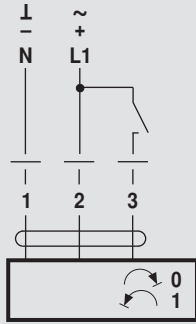
Frikoppla motorn och flytta spjället för hand. Koppla in slangarna i spjällets mät-nippel och mät trycket.

Beräkna flödet och ändra spjället tills maxflödet uppnåtts. Fixera maxläget genom att dra åt den vänstra skruven.

Gör sedan samma sak för minflödet och fixera läget med den högra skruven.

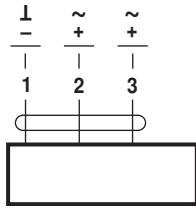


Damper/Spjäll	Motor		
	LM 230A	LM 24A	SR-LM 24A
SPI-F 100	x	x	
SPI-F 125	x	x	
SPI-F 160	x	x	
SPI-F 200	x	x	
SPI-F 250	x	x	
SPI-F 315	x	x	
SPI-F SR-100			x
SPI-F SR-125			x
SPI-F SR-160			x
SPI-F SR-200			x
SPI-F SR-250			x
SPI-F SR-315			x

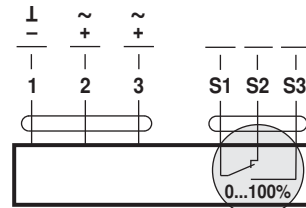


AC 24 V / DC 24 V

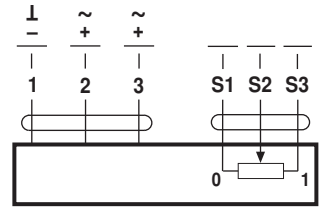
DC 48 ... 110 V
(LM72A..)



LM24A.. LMC24A..
LM72A..

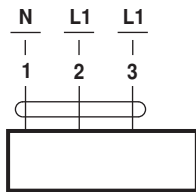


LM24A-S..

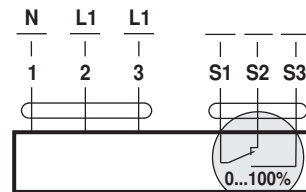


LM24AP5..

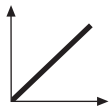
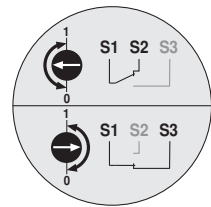
AC 100 ... 240 V



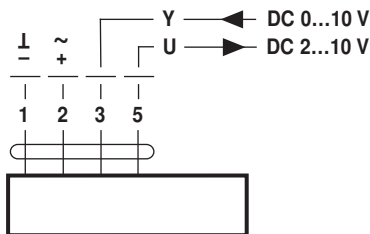
LM230A.. LMC230A..



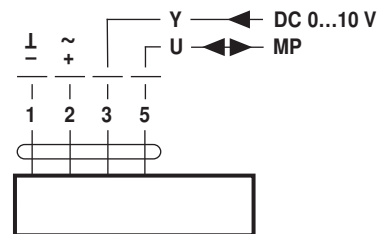
LM230A-S..



AC 24 V / DC 24 V

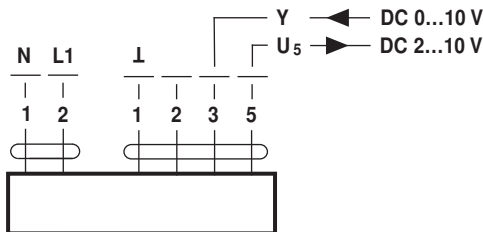


LM24A-SR.. LMC24A-SR..
LM24A-MF..



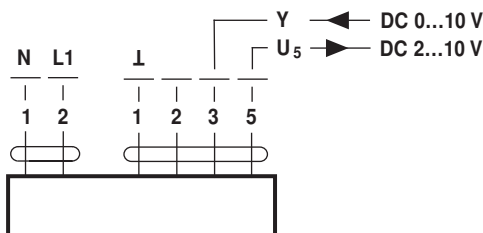
LM24A-MP..

DC 48 ... 110 V
(LM72A-SR..)



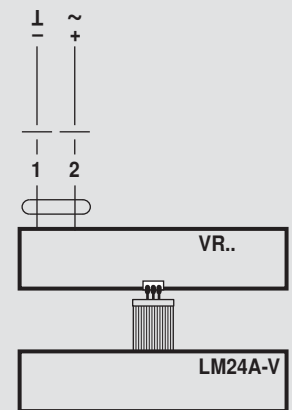
LM72A-SR..

AC 100 ... 240 V



LM230ASR..

AC 24 V / DC 24 V
(LM24A-V / VR..)



LM230A-V / VR..