

Explosion proof roof fans



DVV-EX

- In accordance with ATEX directive 94-9 EC
- Speed-controllable via frequency converter

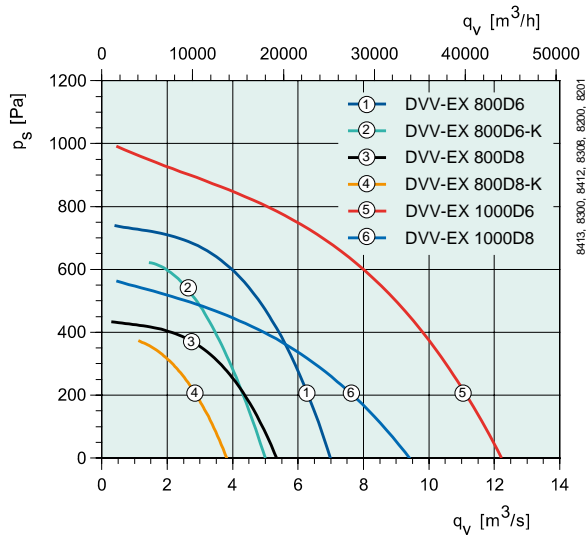
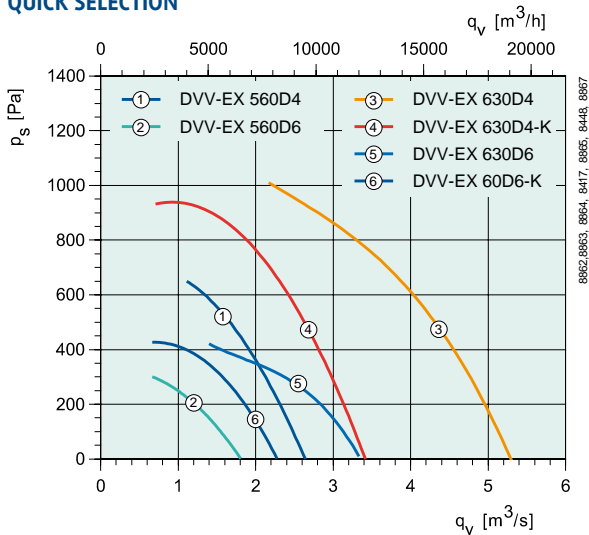
Roof fans DVV-Ex are designed to exhaust potentially explosive atmospheres (mixtures of air and inflammables such as gases and steam) from explosion hazardous areas. The DVV-Ex fans have impellers with backward-curved blades and IEC motor in explosion protection "flame-proof enclosure", Ex d. The casing is manufactured from seawater-resistant aluminium and the base frame from galvanised steel, with a copper inlet cone. Suitable for exhaust from zones 1 or 2, field of application II, for gases of groups IIA and IIB and temperature classes T1 to T4. The fans are classified to category 2G. Terminal box in explosion protection "increased safety", Ex e is mounted on casing. To enable protection of motor from overheating these fans have serial built-in thermostats (PTC) with external leads (connection to U-EK230E EX motor protection relay as accessories possible). On request fan can be factory fitted with sound attenuator on outlet (as DVVI-Ex fan).

ELECTRICAL ACCESSORIES



U-EK 230E EX
p. 338

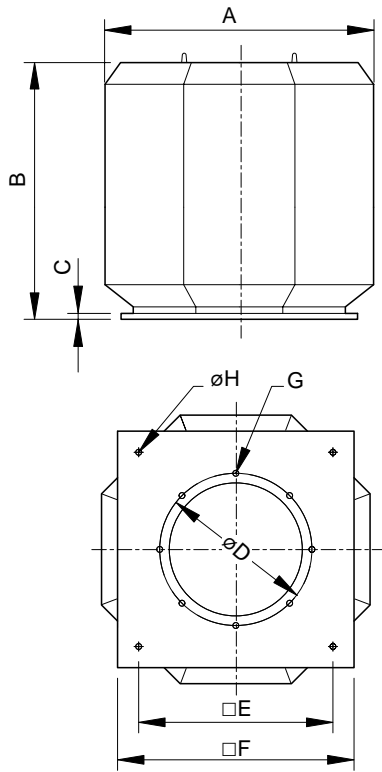
QUICK SELECTION



TECHNICAL DATA

DVV-EX		560D4	560D6	630D4	630D4-K	630D6	630D6-K
Art no		30841	30844	30852	30847	30854	30850
Voltage/Frequency	V/50 Hz	400 3~	400 3~	400 3~	400 3~	400 3~	400 3~
Power	W	1500	750	5500	3000	2200	1100
Current	A	3.35	2.10	10.8	6.5	5.0	3.0
Starting current	A	17.4	7.80	55.1	32.5	30.5	12.3
Max air flow	m³/s	2.64	1.81	5.36	3.5	3.36	2.28
R.p.m.	min ⁻¹	1415	915	1435	1415	960	915
Max temp. of transported air	°C	40	40	40	40	40	40
" when speed controlled	°C	40	40	40	40	40	40
Sound pressure level at 4/10 m	dB(A)	69/61	60/52	75/69	71/63	64/58	61/53
Weight	kg	72	69	161	120	133	107
Insulation class, motor		F	F	F	F	F	F
Enclosure class, motor		IP 55 Ex d	IP 55 Ex d	IP 55 Ex d	IP 55 Ex d	IP 55 Ex d	IP 55 Ex d
Certificate		SIQ 06 ATEX 236X(PPC 00-31780)					
Wiring diagram p. 391-400		13b Y	13b Y	13b D	13b Y	13b Y	13b Y

DIMENSIONS



DVV-EX	A	B	C	øD	□E	□F	G	øH
560D4/D6	808	750	20	438	600	706	12xM8	14
630D4/D4-K/D6/D6-K	1100	958	40	541	880	990	12xM8	18
800D6/D6-K/D8/D8-K	1272	1175	40	674	880	990	16xM10	18
1000D6/D8	1500	1350	70	751	1040	1154	16xM10	18

VENTILATION ACCESSORIES



VKSV-EX p. 380



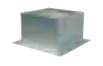
ASFV p. 384



ASSV-EX p. 383



FDVE/F p. 382



SSV/F p. 382



SSVE/F p. 377

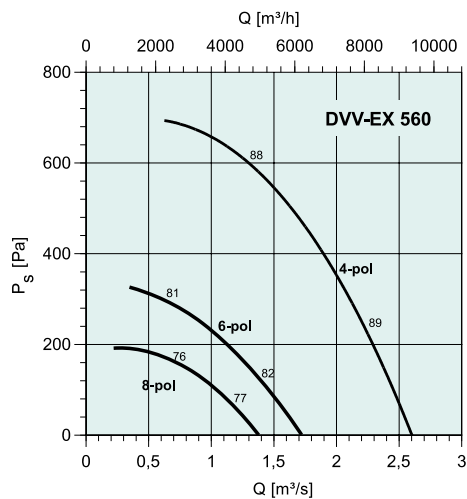


ASK/F p. 380

DVV-EX		800D6	800D6-K	800D8	800D8-K	1000D6	1000D8	
Art no		30856	30859	30858	30861	30862	30863	
Voltage/Frequency	V/50 Hz	400 3~	400 3~	400 3~	400 3~	400 3~	400 3~	
Power	W	5500	2200	2200	1100	11 000	5500	
Current	A	11.80	5.0	5.5	3.25	23.5	13.4	
Starting current	A	72	30.5	23.7	12.4	141	64.3	
Max air flow	m ³ /s	7.08	5.0	5.28	3.92	12.4	9.44	
R.p.m.	min ⁻¹	955	960	710	695	965	715	
Max temp. of transported air	°C	40	40	40	40	40	40	
" when speed controlled	°C	40	40	40	40	40	40	
Sound pressure level at 4/10 m	dB(A)	72/66	66/60	66/57	59/53	73/66	66/58	
Weight	kg	205	171	189	157	370	348	
Insulation class, motor		F	F	F	F	F	F	
Enclosure class, motor		IP 55 Ex d	IP 55 Ex d	IP 55 Ex d	IP 55 Ex d	IP 55 Ex d	IP 55 Ex d	
Certificate		SIQ 06 ATEX 236X(PPC 00-31780)						
Wiring diagram p. 391-400		13b D	13b Y	13b Y	13b Y	13b D	13b D	

Explosion proof roof fans

PERFORMANCE



DVV-EX 560D4										
dB(A)	Tot	Frequency bands [Hz]								
		63	125	250	500	1k	2k	4k	8k	
L_{wA} Inlet	88	61	73	81	82	81	79	76	68	
L_{wA} Surrounding	90	63	75	83	84	83	81	78	70	

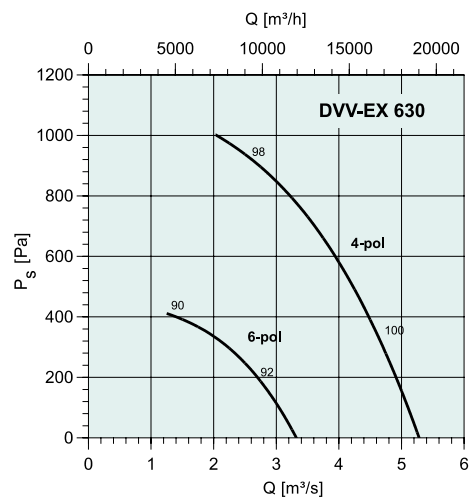
Measurement point: 2,1 m^3/s ; 310 Pa

DVV-EX 560D6										
dB(A)	Tot	Frequency bands [Hz]								
		63	125	250	500	1k	2k	4k	8k	
L_{wA} Inlet	81	58	67	73	77	72	70	68	56	
L_{wA} Surrounding	83	60	69	75	79	74	72	70	58	

Measurement point: 1,50 m^3/s ; 125 Pa

DVV-EX 560D8										
dB(A)	Tot	Frequency bands [Hz]								
		63	125	250	500	1k	2k	4k	8k	
L_{wA} Inlet	76	58	64	67	71	68	68	63	52	
L_{wA} Surrounding	78	60	66	69	73	70	70	65	54	

Measurement point: 1,20 m^3/s ; 50 Pa

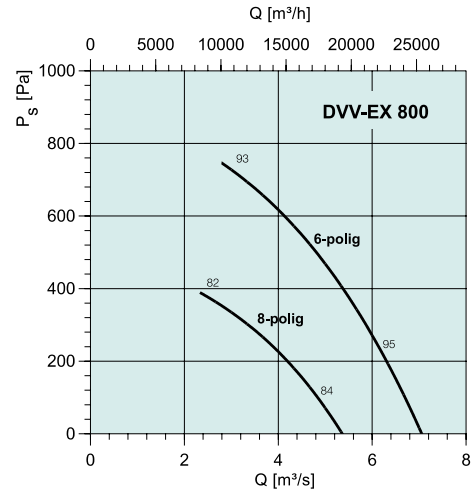
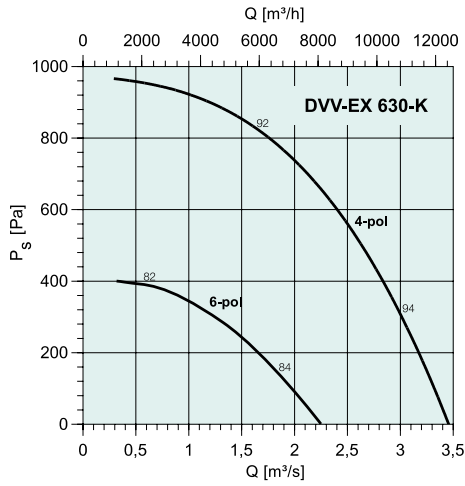


DVV-EX 630D4										
dB(A)	Tot	Frequency bands [Hz]								
		63	125	250	500	1k	2k	4k	8k	
L_{wA} Inlet	97	68	79	91	90	92	87	81	72	
L_{wA} Surrounding	98	68	87	88	91	91	91	89	79	

Measurement point: 4,58 m^3/s ; 370 Pa

DVV-EX 630D6										
dB(A)	Tot	Frequency bands [Hz]								
		63	125	250	500	1k	2k	4k	8k	
L_{wA} Inlet	90	67	76	82	86	81	79	77	65	
L_{wA} Surrounding	92	69	78	84	88	83	81	79	67	

Measurement point: 2,3 m^3/s ; 290 Pa



DVV-EX 630D4-K									
dB(A)	Tot	Frequency bands [Hz]							
		63	125	250	500	1k	2k	4k	8k
L _{WA} Inlet	92	65	77	85	86	85	83	80	72
L _{WA} Surrounding	94	67	79	87	88	87	85	82	74

Measurement point: 2,80 m³/s; 400 Pa

DVV-EX 800D6									
dB(A)	Tot	Frequency bands [Hz]							
		63	125	250	500	1k	2k	4k	8k
L _{WA} Inlet	93	70	79	85	89	84	82	80	68
L _{WA} Surrounding	95	72	81	87	91	86	84	82	70

Measurement point: 4,2 m³/s; 600 Pa

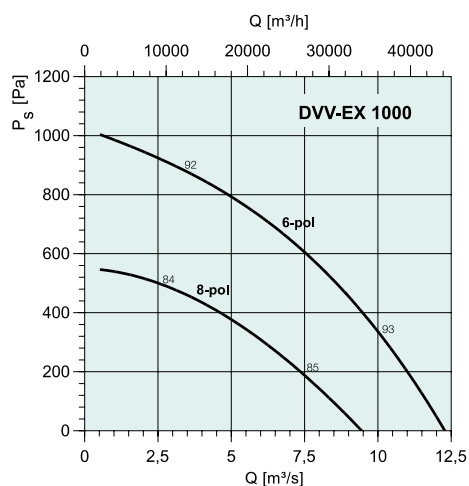
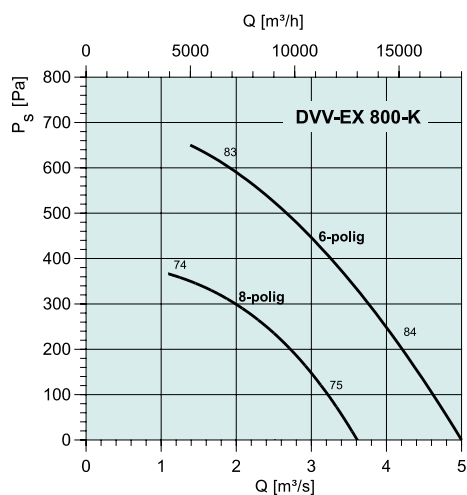
DVV-EX 630D6-K									
dB(A)	Tot	Frequency bands [Hz]							
		63	125	250	500	1k	2k	4k	8k
L _{WA} Inlet	82	58	69	71	78	73	72	68	55
L _{WA} Surrounding	84	60	71	73	80	75	74	70	57

Measurement point: 1,0 m³/s; 350 Pa

DVV-EX 800D8									
dB(A)	Tot	Frequency bands [Hz]							
		63	125	250	500	1k	2k	4k	8k
L _{WA} Inlet	82	64	70	73	77	74	74	69	58
L _{WA} Surrounding	84	66	72	75	79	76	76	71	60

Measurement point: 2,50 m³/s; 330 Pa

Explosion proof roof fans



DVV-EX 800D6-K									
dB(A)	Tot	Frequency bands [Hz]							
		63	125	250	500	1k	2k	4k	8k
L_{wA} Inlet	84	60	71	73	80	75	74	70	57
L_{wA} Surrounding	86	62	73	75	82	77	76	72	59

Measurement point: 4,00 m³/s; 280 Pa

DVV-EX 1000D6									
dB(A)	Tot	Frequency bands [Hz]							
		63	125	250	500	1k	2k	4k	8k
L_{wA} Inlet	92	69	78	84	88	83	81	79	67
L_{wA} Surrounding	94	71	80	86	90	85	83	81	69

Measurement point: 6,94 m³/s; 650 Pa

DVV-EX 800D8-K									
dB(A)	Tot	Frequency bands [Hz]							
		63	125	250	500	1k	2k	4k	8k
L_{wA} Inlet	75	58	64	66	70	68	68	60	49
L_{wA} Surrounding	77	60	66	68	72	70	70	62	51

Measurement point: 3,10 m³/s; 150 Pa

DVV-EX 1000D8									
dB(A)	Tot	Frequency bands [Hz]							
		63	125	250	500	1k	2k	4k	8k
L_{wA} Inlet	84	66	72	75	79	76	76	71	60
L_{wA} Surrounding	86	68	74	77	81	78	78	73	62

Measurement point: 6,11 m³/s; 310 Pa