

Centrifugal fans single inlet



CT

- Speed-controllable
- Integral thermal contacts
- Can be installed in any position
- Maintenance-free and reliable

CT fans are easy to install. Fans in this series have impellers with forward-curved blades and external rotor motors. The casing is manufactured from galvanised sheet steel.

To protect the motor from overheating, the fans have integral thermal contacts with external leads for connection to a motor protection device.

CT 200 fans are electrically connected via a junction box. CT 225 - 450 fans electrical cable is directly connected to the motor without junction box.

ELECTRICAL ACCESSORIES



RTRD p. 321

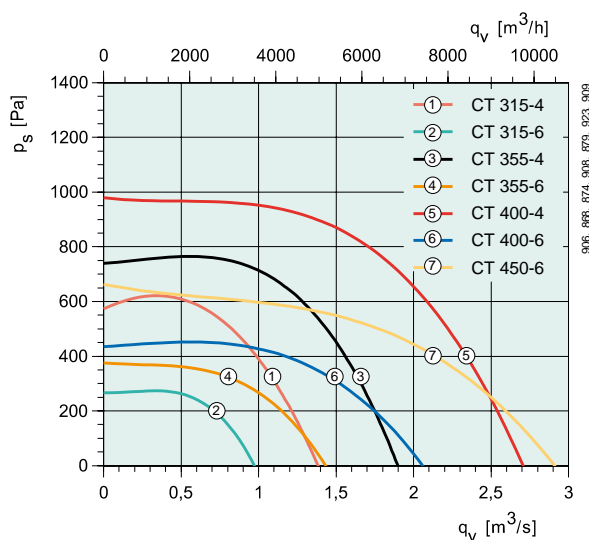
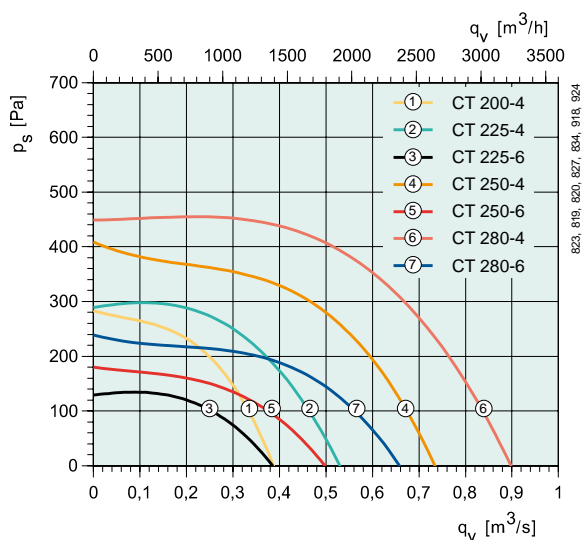


RTRDU p. 321



STDT p. 342

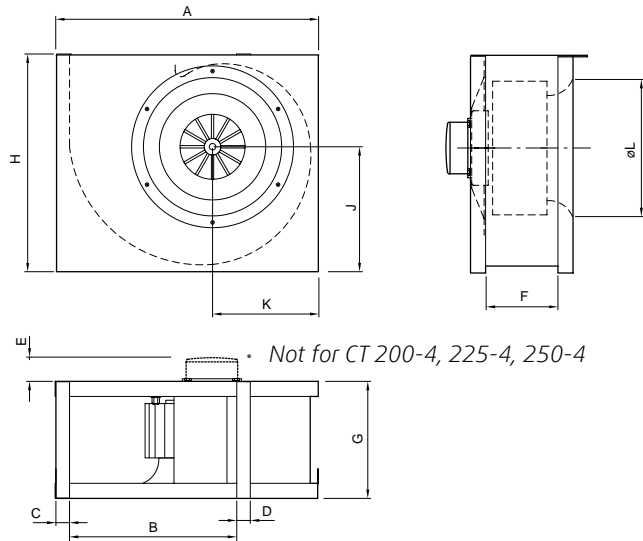
QUICK SELECTION



TECHNICAL DATA

CT		200-4	225-4	225-6	250-4	250-6	280-4	280-6
Art. no		1579	1583	1581	1574	1584	1586	1575
Voltage/Frequency	V/50 Hz	400 3~	400 3~	400 3~	400 3~	400 3~	400 3~	400 3~
Power	W	310	504	198	788	297	1333	407
Current	A	0.551	0.892	0.42	1.4	0.624	2.35	0.863
Max air flow	m³/s	0.392	0.534	0.386	0.68	0.5	0.906	0.587
R.p.m.	min-1	1304	1319	857	1266	832	1307	825
Max temp. of transported air	°C	61	70	70	60	55	70	60
" when speed controlled	°C	61	56	70	60	55	70	60
Sound pressure level at 3 m	dB(A)	44	53	45	60	51	59	45
Weight	kg	8.5	11.5	10.6	14.5	12.3	22.5	16
Insulation class, motor		B	F	F	F	F	F	F
Enclosure class, motor		IP 44	IP 54	IP 54	IP 54	IP 54	IP 54	IP 54
Motor protection		STDT 16	STDT 16	STDT 16	STDT 16	STDT 16	STDT 16	STDT 16
Speed control, five-step	Transformer	RTRD 2	RTRD 2	RTRD 2	RTRD 2	RTRD 2	RTRD 4	RTRD 2
Speed control, five-step high/low	Transformer	RTRDU 2	RTRDU 2	RTRDU 2	RTRDU 2	RTRDU 2	RTRDU 4	RTRDU 2
Wiring diagram p. 391-400		7	8	8	8	8	8	8

DIMENSIONS



• Not for CT 200-4, 225-4, 250-4

	A	B	C	D	E	F	G	H	J	K	ØL
CT 200-4	404	250	26	26	4	132	183	332	187	164	186
CT 225-4	445	280	25	25	6	147	198	369	211	180	234
CT 225-6	445	280	25	25	40	147	198	369	211	180	234
CT 250-4	492	315	26	26	8	167	218	412	239	198	261
CT 250-6	492	315	26	26	42	167	218	412	239	198	261
CT 280-4	547	357	26	26	50	182	233	455	257	221	293
CT 280-6	547	357	26	26	46	182	233	455	257	221	293
CT 315-4/6	615	400	26	26	58	203	254	517	298	247	326
CT 355-4	689	450	26	26	70	227	278	574	325	287	367
CT 355-6	689	450	26	26	53	227	278	574	325	287	367
CT 400-4/6	768	500	26	26	72	252	304	643	365	310	413
CT 450-6	859	560	26	26	76	283	335	721	412	348	463

VENTILATION ACCESSORIES



VK p. 356



RSK p. 355



LDR p. 358



FFR p. 349



CWK p. 354

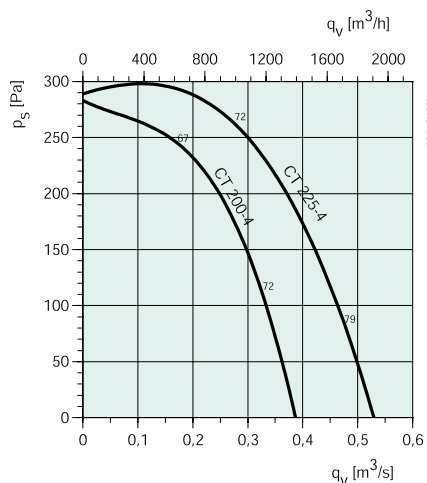


VBR p. 365

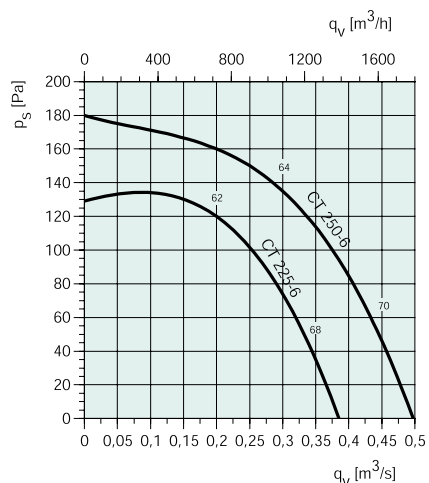
CT		315-4	315-6	355-4	355-6	400-4	400-6	450-6
Art. no		1587	1576	1589	1588	1536	1591	1593
Voltage/Frequency	V/50 Hz	400 3~	400 3~	400 3~	400 3~	400 3~	400 3~	400 3~
Power	W	2365	843	3716	1538	4984	2624	3821
Current	A	3.95	1.69	6.16	2.88	8.12	4.84	6.76
Max air flow	m ³ /s	1.21	0.98	1.73	1.45	2.01	2.07	2.56
R.p.m.	min ⁻¹	1233	782	1291	818	1312	843	842
Max temp. of transported air	°C	40	55	70	70	70	70	59
" when speed controlled	°C	40	55	70	70	70	70	59
Sound pressure level at 3 m	dB(A)	65	55	63	56	70	58	61
Weight	kg	28.4	22.6	42.4	31	54.9	51	59.8
Insulation class, motor	F	F	F	F	F	F	F	F
Enclosure class, motor	IP 54	IP 54	IP 54	IP 54	IP 54	IP 54	IP 54	IP 54
Motor protection	STDT 16	STDT 16	STDT 16	STDT 16	STDT 16	STDT 16	STDT 16	STDT 16
Speed control, five-step	Transformer	RTRD 7	RTRD 2	RTRD 7	RTRD 4	RTRD 14	RTRD 7	RTRD 7
Speed control, five-step high/low	Transformer	RTRDU 7	RTRDU 2	RTRDU 7	RTRDU 4	-	RTRDU 7	RTRDU 7
Wiring diagram p. 391-400		8	8	8	8	8	8	8

Centrifugal fans single inlet

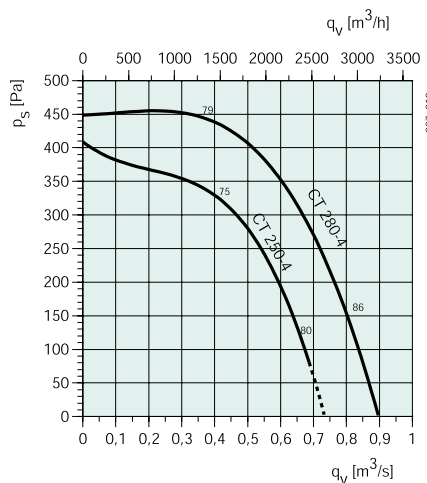
PERFORMANCE



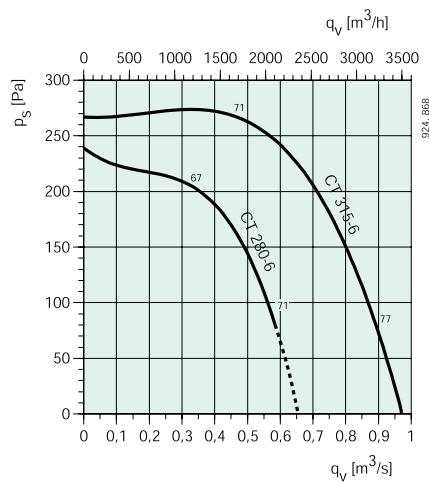
dB(A)	Tot	Frequency bands [Hz]							
		63	125	250	500	1k	2k	4k	8k
CT 200-4									
L _{WA} Inlet	67	44	50	62	56	60	60	57	52
L _{WA} Outlet	69	44	46	59	62	65	62	60	55
L _{WA} Surrounding	51	37	31	44	43	45	45	41	34
Measurement point: 0,181 m ³ /s; 254 Pa									
CT 225-4									
L _{WA} Inlet	75	65	64	71	63	67	67	65	61
L _{WA} Outlet	77	63	59	69	69	72	68	66	63
L _{WA} Surrounding	59	44	40	47	49	53	54	51	53
Measurement point: 0,291 m ³ /s; 263 Pa									



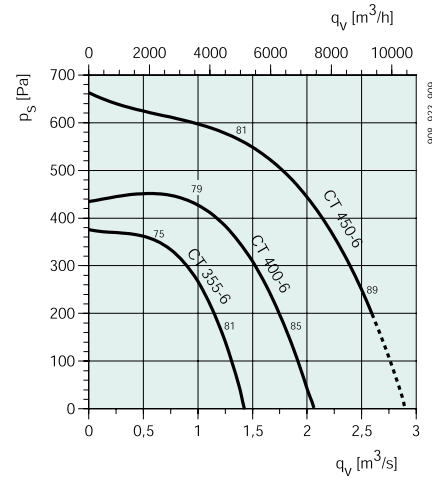
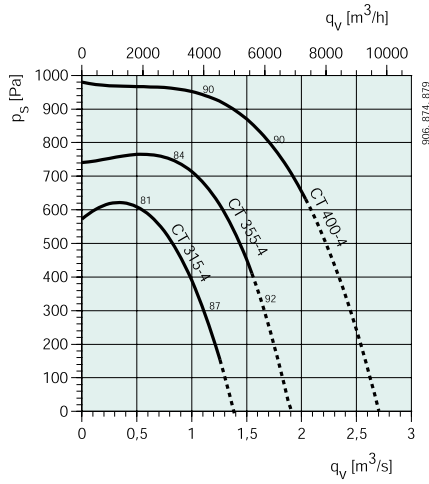
dB(A)	Tot	Frequency bands [Hz]							
		63	125	250	500	1k	2k	4k	8k
CT 225-6									
L _{WA} Inlet	62	38	45	55	54	55	56	53	43
L _{WA} Outlet	64	39	39	53	59	57	56	54	46
L _{WA} Surrounding	51	34	35	44	47	44	43	41	39
Measurement point: 0,194 m ³ /s; 125 Pa									
CT 250-6									
L _{WA} Inlet	64	41	46	54	55	58	58	55	47
L _{WA} Outlet	67	41	41	54	62	60	59	58	49
L _{WA} Surrounding	58	46	33	42	50	53	53	47	35
Measurement point: 0,29 m ³ /s; 143 Pa									



dB(A)	Tot	Frequency bands [Hz]							
		63	125	250	500	1k	2k	4k	8k
CT 250-4									
L _{WA} Inlet	75	51	57	62	63	71	70	68	64
L _{WA} Outlet	77	50	52	63	68	74	70	69	64
L _{WA} Surrounding	67	53	43	47	56	64	61	56	50
Measurement point: 0,425 m ³ /s; 319 Pa									
CT 280-4									
L _{WA} Inlet	79	55	62	66	67	74	75	70	66
L _{WA} Outlet	81	54	58	66	72	77	74	72	67
L _{WA} Surrounding	66	49	42	52	53	62	61	57	53
Measurement point: 0,399 m ³ /s; 445 Pa									



dB(A)	Tot	Frequency bands [Hz]							
		63	125	250	500	1k	2k	4k	8k
CT 280-6									
L _{WA} Inlet	67	44	51	56	59	62	60	58	51
L _{WA} Outlet	70	42	46	56	66	64	61	60	52
L _{WA} Surrounding	52	41	31	40	44	48	45	40	31
Measurement point: 0,341 m ³ /s; 205 Pa									
CT 315-6									
L _{WA} Inlet	71	49	57	59	63	66	64	63	56
L _{WA} Outlet	72	47	52	60	68	65	64	64	55
L _{WA} Surrounding	62	38	37	48	57	57	53	50	41
Measurement point: 0,479 m ³ /s; 274 Pa									



dB(A)	Tot	Frequency bands [Hz]							
		63	125	250	500	1k	2k	4k	8k
CT 315-4									
L_{wA} Inlet	81	59	68	66	68	76	76	74	69
L_{wA} Outlet	83	56	64	69	74	78	76	75	71
L_{wA} Surrounding	72	51	49	55	61	68	66	62	55
Measurement point: 0,615 m^3/s ; 594 Pa									
CT 355-4									
L_{wA} Inlet	84	60	71	68	73	81	79	75	71
L_{wA} Outlet	88	57	69	73	79	84	81	79	73
L_{wA} Surrounding	70	44	51	54	56	68	62	54	48
Measurement point: 0,922 m^3/s ; 756 Pa									
CT 400-4									
L_{wA} Inlet	90	60	72	76	81	87	84	80	76
L_{wA} Outlet	88	63	73	71	76	84	82	77	74
L_{wA} Surrounding	77	46	52	61	67	75	69	60	54
Measurement point: 1,16 m^3/s ; 974 Pa									

dB(A)	Tot	Frequency bands [Hz]							
		63	125	250	500	1k	2k	4k	8k
CT 355-6									
L_{wA} Inlet	75	52	59	60	67	70	69	66	62
L_{wA} Outlet	79	63	63	67	74	74	71	70	64
L_{wA} Surrounding	63	39	42	49	58	59	56	50	45
Measurement point: 0,688 m^3/s ; 355 Pa									
CT 400-6									
L_{wA} Inlet	79	56	63	62	75	73	72	69	65
L_{wA} Outlet	81	51	60	67	76	75	74	72	66
L_{wA} Surrounding	65	40	43	48	60	60	58	49	42
Measurement point: 1,0 m^3/s ; 442 Pa									
CT 450-6									
L_{wA} Inlet	81	60	66	64	77	75	74	70	67
L_{wA} Outlet	85	55	64	70	80	79	78	74	69
L_{wA} Surrounding	67	39	49	51	64	63	59	48	45
Measurement point: 1,35 m^3/s ; 593 Pa									