

Centrifugal fans single inlet



CKS

- Swing-out
- Speed-controllable
- Integral thermal contacts
- Can be mounted in any position

Swing-out cover for easy cleaning and servicing. Maintenance-free and reliable.

CKS fans are easy to install. Fans in this series have impellers with backward-curved blades and external rotor motors. The casing is manufactured from galvanised sheet steel.

To protect the motor from overheating, the fans have integral thermal contacts with external leads for connection to a motor protection device.

ELECTRICAL ACCESSORIES



S-ET p. 341



RTRE p. 320



REU p. 320



REE p. 321

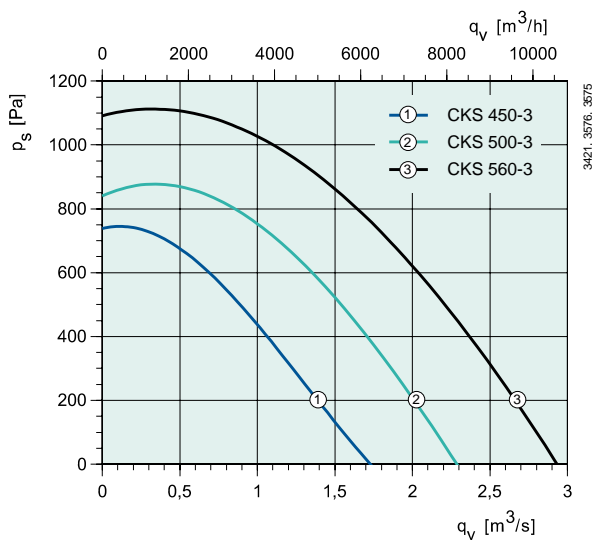
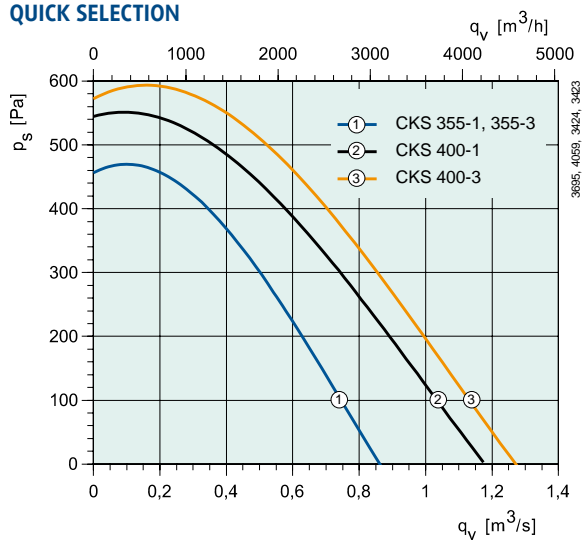


RTRD/RTRDU
p. 321



STDT p. 342

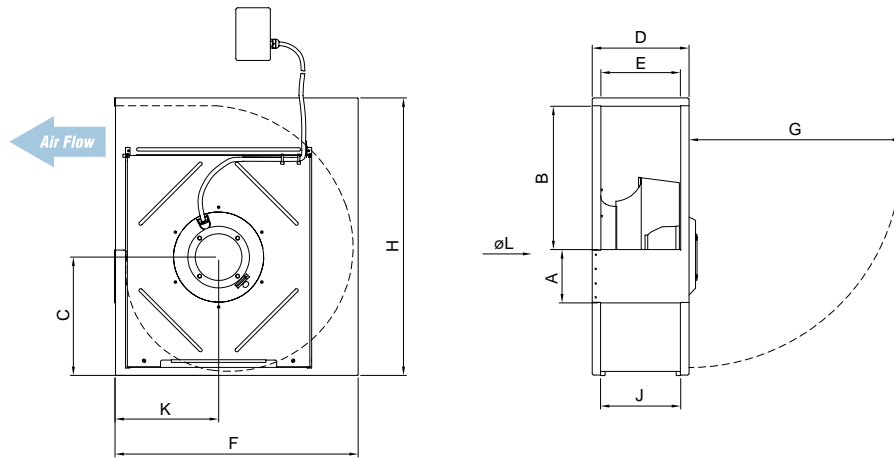
QUICK SELECTION



TECHNICAL DATA

| CKS | | 355-1 | 355-3 | 400-1 | 400-3 | 450-3 | 500-3 | 560-3 |
|-----------------------------------|-------------|---------|---------|---------|---------|---------|---------|---------|
| Art. no | | 1518 | 1519 | 1520 | 1521 | 1522 | 1523 | 1524 |
| Voltage/Frequency | V/50 Hz | 230 1~ | 400 3~ | 230 1~ | 400 3~ | 400 3~ | 400 3~ | 400 3~ |
| Power | W | 410 | 353 | 611 | 687 | 1048 | 1726 | 2801 |
| Current | A | 1.96 | 0.73 | 2.77 | 1.6 | 1.88 | 3.34 | 4.86 |
| Max air flow | m³/s | 0.868 | 0.856 | 1.18 | 1.27 | 1.75 | 2.32 | 2.98 |
| R.p.m. | min-1 | 1356 | 1380 | 1314 | 1404 | 1333 | 1393 | 1360 |
| Max temp. of transported air | °C | 70 | 70 | 70 | 70 | 70 | 66 | 70 |
| " when speed controlled | °C | 70 | 70 | 70 | 70 | 68 | 62 | 70 |
| Sound pressure level at 3 m | dB(A) | 54 | 50 | 56 | 48 | 60 | 65 | 68 |
| Weight | kg | 26.4 | 25.2 | 33 | 32.6 | 43.6 | 60.6 | 74.1 |
| Insulation class, motor | F | F | F | F | F | F | F | F |
| Enclosure class, motor | IP 54 | IP 54 | IP 54 | IP 54 | IP 54 | IP 54 | IP 54 | IP 54 |
| Capacitor | µF | 8 | - | 14 | - | - | - | - |
| Motor protection | | S-ET 10 | STDT 16 | S-ET 10 | STDT 16 | STDT 16 | STDT 16 | STDT 16 |
| Speed control, five-step | Transformer | RTRE 3 | RTRD 2 | RTRE 3 | RTRD 2 | RTRD 4 | RTRD 4 | RTRD 7 |
| Speed control, five-step high/low | Transformer | REU 3 | RTRDU 2 | REU 3 | RTRDU 2 | RTRDU 4 | RTRDU 4 | RTRDU 7 |
| Speed control, stepless | Thyristor | REE 4 | - | REE 4 | - | - | - | - |
| Wiring diagram p. 391-400 | | 6 | 8 | 6 | 8 | 8 | 8 | 8 |

DIMENSIONS



| CKS | A | B | C | D | E | F | G | H | J | K | øL |
|-----|-----|-----|-----|-----|-----|-----|-----|------|-----|-----|-----|
| 355 | 135 | 342 | 283 | 243 | 193 | 590 | 530 | 668 | 196 | 250 | 329 |
| 400 | 148 | 383 | 317 | 266 | 216 | 658 | 530 | 748 | 219 | 283 | 370 |
| 450 | 160 | 432 | 355 | 294 | 244 | 734 | 650 | 837 | 247 | 312 | 415 |
| 500 | 180 | 482 | 393 | 317 | 267 | 810 | 650 | 926 | 270 | 343 | 469 |
| 560 | 197 | 542 | 440 | 342 | 292 | 900 | 650 | 1033 | 295 | 380 | 515 |

VENTILATION ACCESSORIES



ISE p. 371



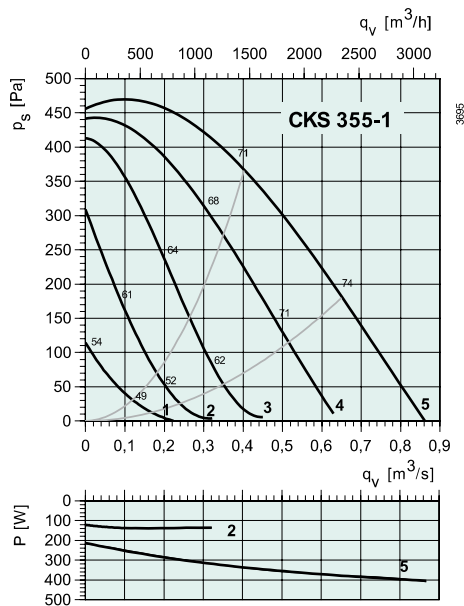
LDC p. 348



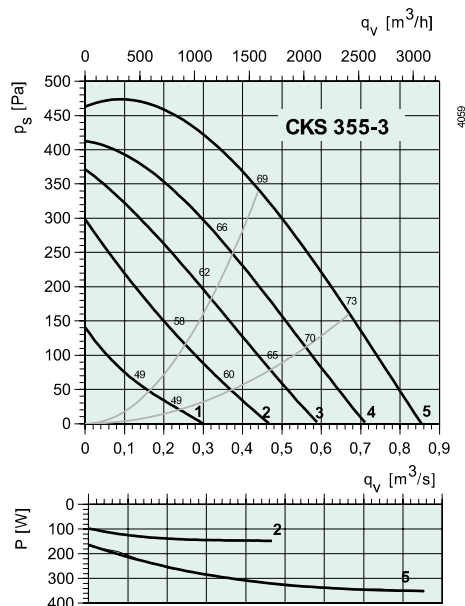
USE p. 371

Centrifugal fans single inlet

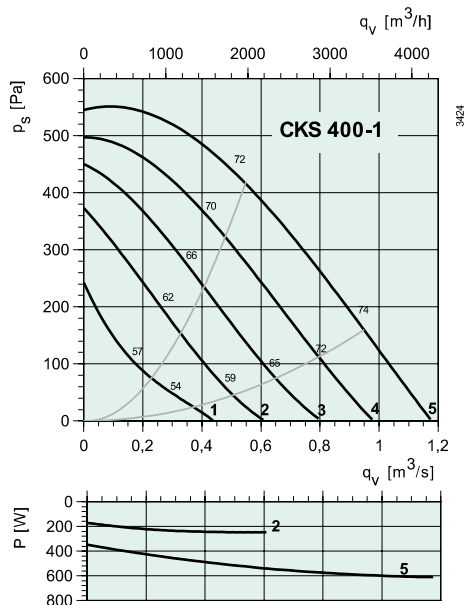
PERFORMANCE



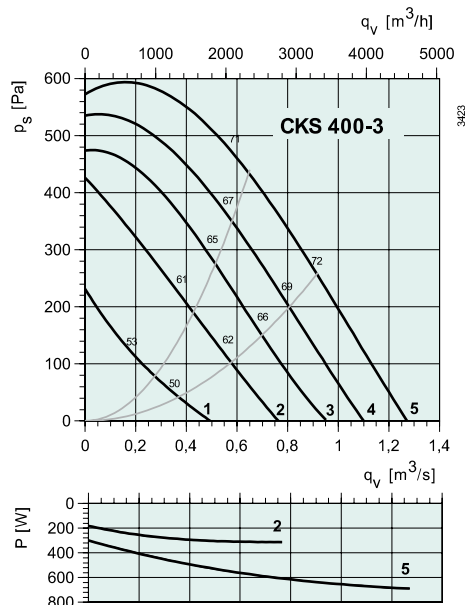
| dB(A) | Tot | Frequency bands [Hz] | | | | | | | |
|--|-----|----------------------|-----|-----|-----|----|----|----|----|
| | | 63 | 125 | 250 | 500 | 1k | 2k | 4k | 8k |
| L _{WA} Inlet | 71 | 45 | 60 | 65 | 65 | 64 | 61 | 55 | 52 |
| L _{WA} Outlet | 72 | 46 | 58 | 66 | 66 | 66 | 63 | 54 | 49 |
| L _{WA} Surrounding | 61 | 32 | 46 | 58 | 52 | 54 | 50 | 42 | 33 |
| With LDC 355-900 | | | | | | | | | |
| L _{WA} Inlet | 62 | 45 | 57 | 59 | 52 | 46 | 51 | 49 | 45 |
| L _{WA} Outlet | 63 | 46 | 55 | 60 | 53 | 48 | 53 | 48 | 42 |
| Measurement point: 0,399 m ³ /s; 375 Pa | | | | | | | | | |



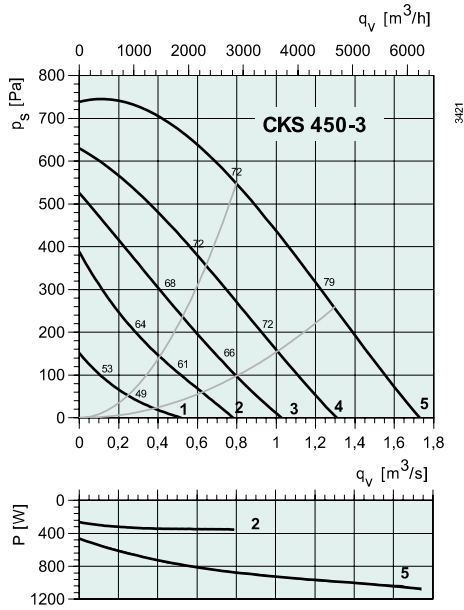
| dB(A) | Tot | Frequency bands [Hz] | | | | | | | |
|--|-----|----------------------|-----|-----|-----|----|----|----|----|
| | | 63 | 125 | 250 | 500 | 1k | 2k | 4k | 8k |
| L _{WA} Inlet | 69 | 44 | 58 | 63 | 64 | 62 | 60 | 58 | 55 |
| L _{WA} Outlet | 73 | 44 | 57 | 68 | 67 | 66 | 63 | 54 | 45 |
| L _{WA} Surrounding | 57 | 25 | 41 | 53 | 48 | 51 | 48 | 41 | 33 |
| With LDC 355-900 | | | | | | | | | |
| L _{WA} Inlet | 61 | 44 | 55 | 57 | 51 | 44 | 50 | 52 | 48 |
| L _{WA} Outlet | 64 | 44 | 54 | 62 | 54 | 48 | 53 | 48 | 38 |
| Measurement point: 0,435 m ³ /s; 345 Pa | | | | | | | | | |



| dB(A) | Tot | Frequency bands [Hz] | | | | | | | |
|--|-----|----------------------|-----|-----|-----|----|----|----|----|
| | | 63 | 125 | 250 | 500 | 1k | 2k | 4k | 8k |
| L _{WA} Inlet | 72 | 49 | 63 | 66 | 67 | 65 | 64 | 58 | 54 |
| L _{WA} Outlet | 76 | 45 | 65 | 71 | 71 | 69 | 65 | 60 | 58 |
| L _{WA} Surrounding | 63 | 38 | 47 | 59 | 55 | 56 | 54 | 42 | 37 |
| With LDC 400-900 | | | | | | | | | |
| L _{WA} Inlet | 66 | 48 | 60 | 61 | 57 | 52 | 57 | 53 | 48 |
| L _{WA} Outlet | 69 | 44 | 62 | 66 | 61 | 56 | 58 | 55 | 52 |
| Measurement point: 0,511 m ³ /s; 438 Pa | | | | | | | | | |

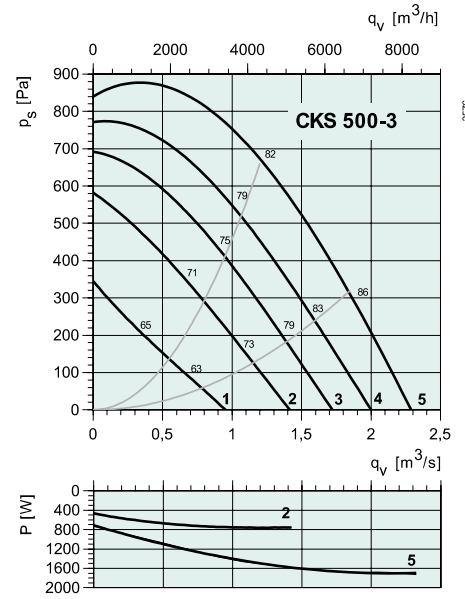


| dB(A) | Tot | Frequency bands [Hz] | | | | | | | |
|--|-----|----------------------|-----|-----|-----|----|----|----|----|
| | | 63 | 125 | 250 | 500 | 1k | 2k | 4k | 8k |
| L _{WA} Inlet | 71 | 41 | 60 | 65 | 66 | 62 | 60 | 52 | 42 |
| L _{WA} Outlet | 77 | 48 | 61 | 72 | 72 | 71 | 67 | 59 | 52 |
| L _{WA} Surrounding | 55 | 15 | 37 | 50 | 50 | 49 | 46 | 30 | 12 |
| With LDC 400-900 | | | | | | | | | |
| L _{WA} Inlet | 64 | 40 | 57 | 60 | 56 | 49 | 53 | 47 | 36 |
| L _{WA} Outlet | 70 | 47 | 58 | 67 | 62 | 58 | 60 | 54 | 46 |
| Measurement point: 0,552 m ³ /s; 491 Pa | | | | | | | | | |



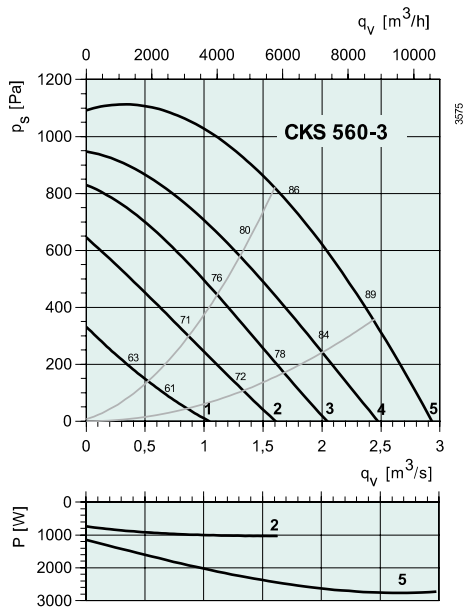
| dB(A) | Tot | Frequency bands [Hz] | | | | | | | |
|-----------------------------|-----|----------------------|-----|-----|-----|----|----|----|----|
| | | 63 | 125 | 250 | 500 | 1k | 2k | 4k | 8k |
| L _{WA} Inlet | 72 | 42 | 62 | 65 | 67 | 65 | 64 | 56 | 46 |
| L _{WA} Outlet | 79 | 51 | 64 | 72 | 74 | 73 | 69 | 62 | 57 |
| L _{WA} Surrounding | 67 | 28 | 48 | 64 | 60 | 59 | 56 | 44 | 33 |

Measurement point: 0,798 m³/s; 548 Pa



| dB(A) | Tot | Frequency bands [Hz] | | | | | | | |
|-----------------------------|-----|----------------------|-----|-----|-----|----|----|----|----|
| | | 63 | 125 | 250 | 500 | 1k | 2k | 4k | 8k |
| L _{WA} Inlet | 82 | 55 | 69 | 74 | 78 | 74 | 73 | 66 | 58 |
| L _{WA} Outlet | 87 | 56 | 68 | 81 | 83 | 81 | 76 | 72 | 61 |
| L _{WA} Surrounding | 72 | 33 | 56 | 61 | 68 | 67 | 63 | 51 | 41 |

Measurement point: 1,21 m³/s; 672 Pa



| dB(A) | Tot | Frequency bands [Hz] | | | | | | | |
|-----------------------------|-----|----------------------|-----|-----|-----|----|----|----|----|
| | | 63 | 125 | 250 | 500 | 1k | 2k | 4k | 8k |
| L _{WA} Inlet | 86 | 61 | 72 | 80 | 81 | 78 | 77 | 71 | 63 |
| L _{WA} Outlet | 89 | 65 | 72 | 83 | 83 | 84 | 79 | 72 | 63 |
| L _{WA} Surrounding | 75 | 37 | 58 | 71 | 67 | 69 | 65 | 56 | 48 |

Measurement point: 1,76 m³/s; 761 Pa