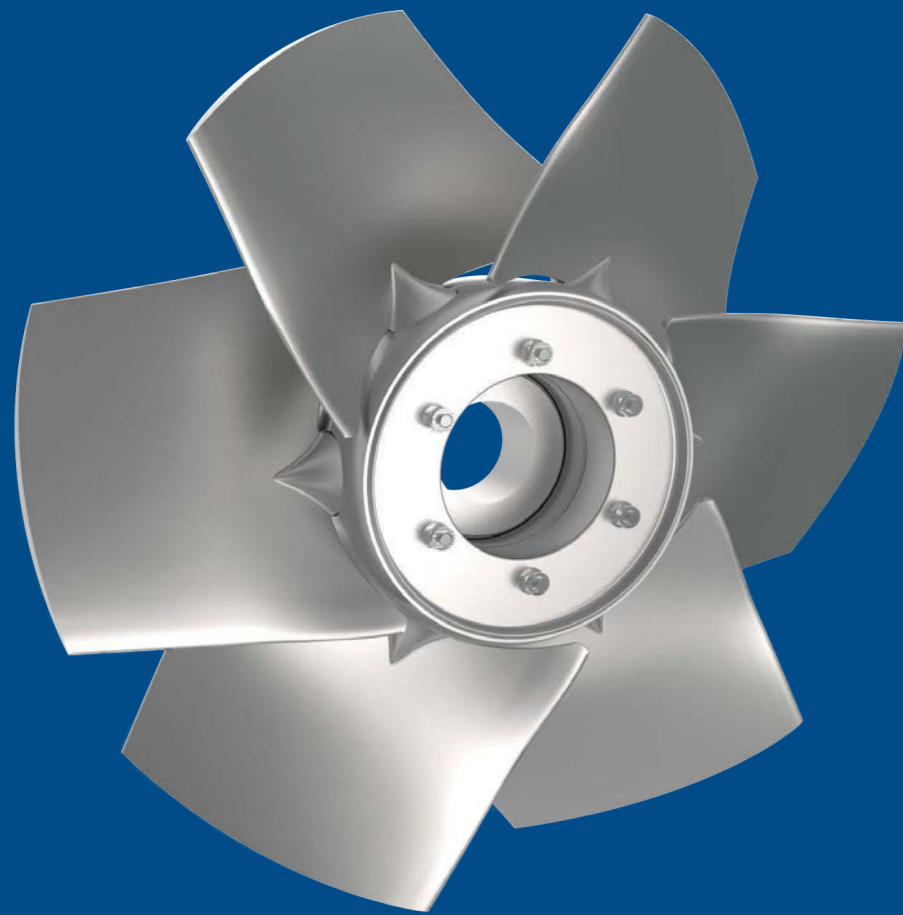


AXCPV

Axial fan

Aerofoil impeller with adjustable pitch angle for maximum efficiency.
More flexible than standard solutions.



AXCPV



- Bolt-on outlet guide vane section
- Improved impeller efficiency
- AXCPV fans operate at a low sound level
- New design available in 5 different sizes from 315 up to 500 mm
- Unique ErP compliant high efficiency profile
- Suitable for operating temperatures up to 55°C
- Aerofoil impeller with adjustable pitch angle for maximum efficiency, direct driven
- Aluminium hub and blades, Impeller balanced statically and dynamically in accordance with DIN ISO 1940-1, quality grade G6,3
- Long casing, hot dip galvanized steel, to DIN EN ISO 1461
- Spun flanges according Eurovent 1/2
- VDE certified terminal box in IP65 mounted at the outside of the fan casing for easy wiring
- Three-phase motors IE2 efficiency or IE3 efficiency, IP55, insulation class F, in accordance with EN 60034-5/IEC 85

Electrical accessories

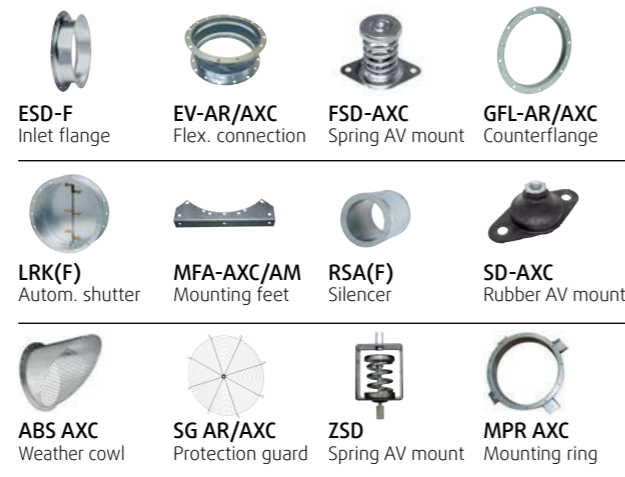


AZ/VKV
Vibration monitor set



FC102
Frequency inverter

Accessories



Axial fan

The newest generation of Systemair axial fans with new blade design and a bolt-on outlet guide vane section which increases the pressure and improves the efficiency of the standard AXCP model.

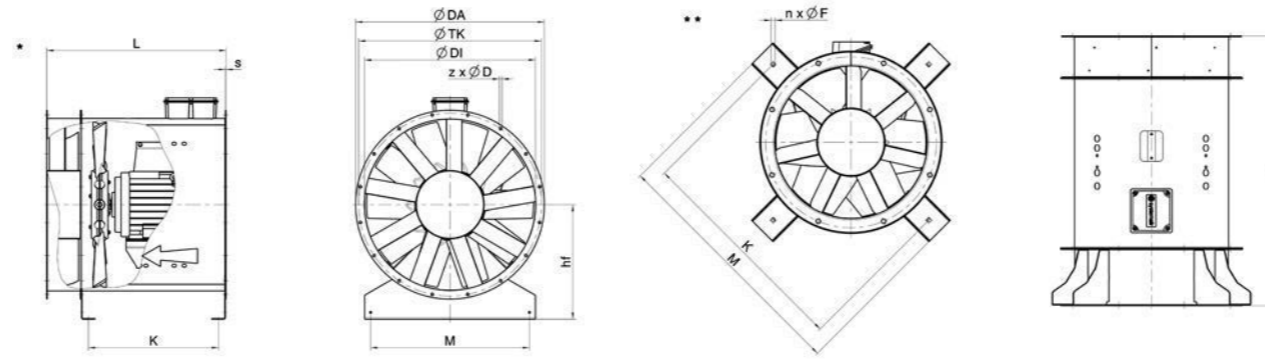
The adjustable pitch angle setting offers a wide performance and maximum flexibility to match precisely individual airflow requirements. The AXCPV axial fans have been performance tested in accordance with DIN ISO 5801, DIN 24163 and AMCA 210-99 on the Systemair fan test rig. The motors are equipped with PTC thermistors for optimum motor protection. The motor is speed controllable by frequency converter.

The AXCPV has a unique profile which pushes efficiencies of standard axial fans. It helps minimizing the power consumption of the fan enabling you to comply with the ErP Directive and the proposed 2020 requirements.

The high number of possible configurations means that solutions incorporating the AXCPV is even more flexible than standard solutions. It provides high efficiency rates for a majority of the performance curve and not only in the best efficiency point.

Contact your local Systemair sales engineer for more information on our ErP services and compliant products.

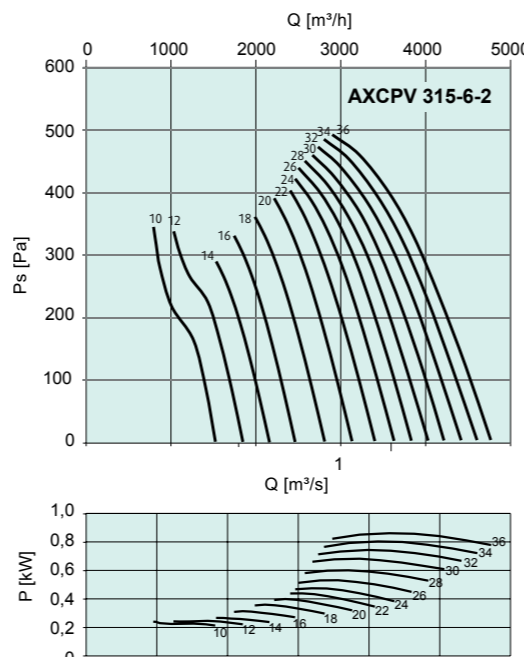
Dimensions



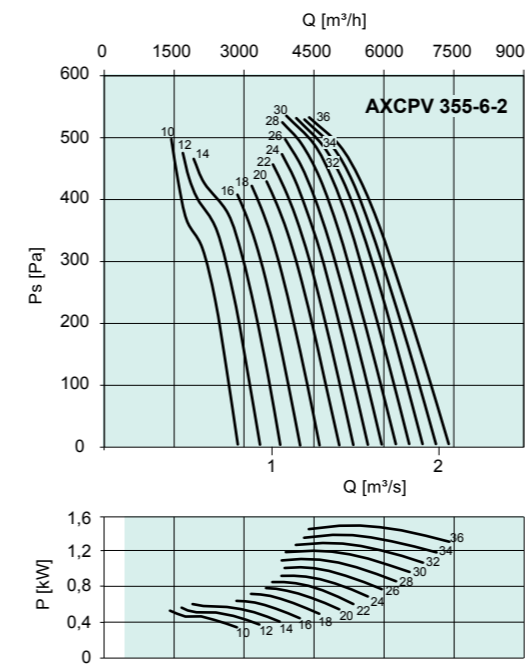
AXCPV	* Air direction: S								** Air direction: SO/SU (SO=air direction upwards; SU=air direction downwards)					
	ØDa	ØDi	hF	ØTK	M	s	z x Ød	L	K	K	M	L	s	n x ØdF
315	395	315	225	355	265	2.5	8 x 10	550	360	355	575	700	2.5	4 x 11
355	435	355	250	395	305	2.5	8 x 10	550	360	395	615	700	2.5	4 x 11
400	480	400	280	450	350	2.5	8 x 12	575	385	450	660	725	2.5	4 x 11
450	530	450	315	500	400	2.5	8 x 12	625	360	500	710	774	2.5	4 x 11
500	590	500	335	560	440	3.0	12 x 12	665	464	560	776	815	3.0	12 x 12

Dimensions in mm.

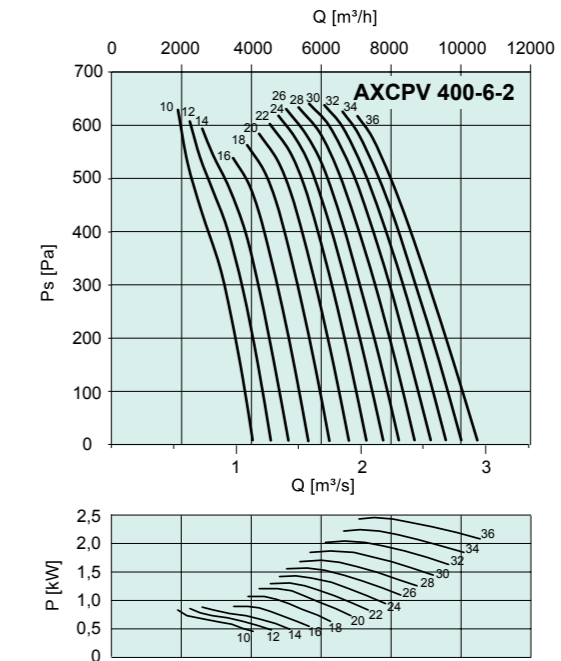
Performance



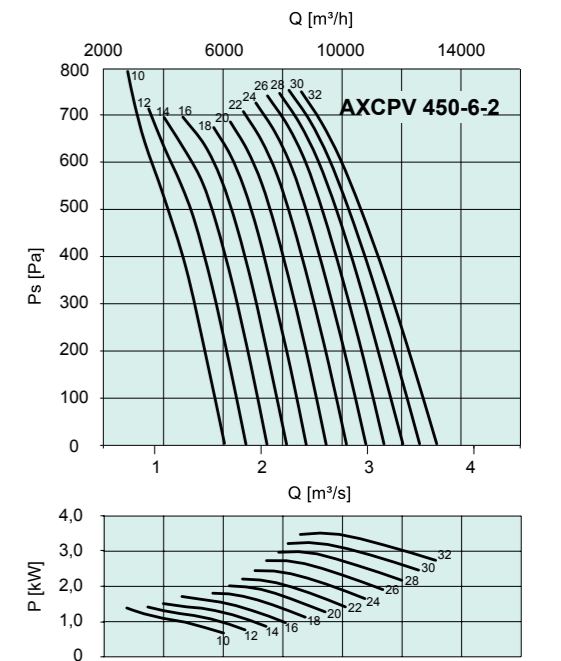
Article no.	Size *
CAXPV31501	AXC 315-6-2 (0,75kW)IE3 NL



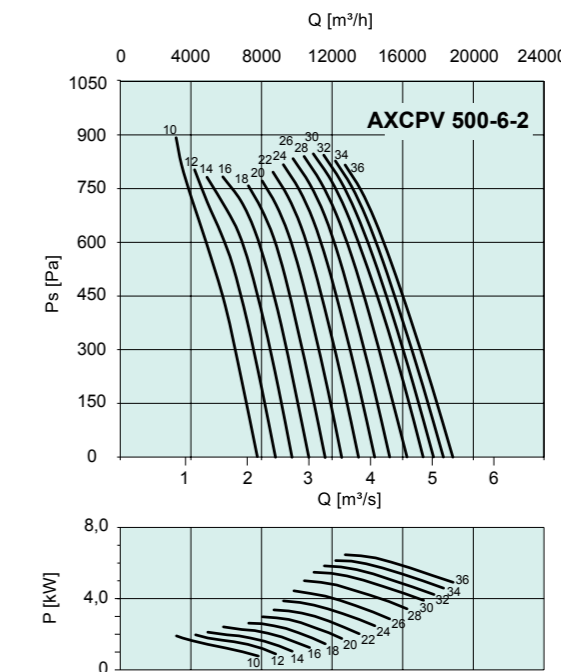
Article no.	Size *
CAXPV35501	AXC 355-6-2 (0,75kW)IE3 NL
CAXPV35502	AXC 355-6-2 (1,1kW)IE3 NL
CAXPV35503	AXC 355-6-2 (1,5kW)IE3 NL



Article no.	Size *
CAXPV40001	AXC 400-6-2 (0,75kW)IE3 NL
CAXPV40002	AXC 400-6-2 (1,1kW)IE3 NL
CAXPV40003	AXC 400-6-2 (1,5kW)IE3 NL
CAXPV40004	AXC 400-6-2 (2,2kW)IE3 NL



Article no.	Size *
CAXPV45001	AXC 450-6-2 (0,75kW)IE3 NL
CAXPV45002	AXC 450-6-2 (1,1kW)IE3 NL
CAXPV45003	AXC 450-6-2 (1,5kW)IE3 NL
CAXPV45004	AXC 450-6-2 (2,2kW)IE3 NL
CAXPV45005	AXC 450-6-2 (3,0kW)IE3 NL
CAXPV45006	AXC 450-6-2 (4,0kW)IE3 NL



Article no.	Size *
CAXPV50001	AXC 500-6-2 (1,1kW)IE3 NL
CAXPV50002	AXC 500-6-2 (1,5kW)IE3 NL
CAXPV50003	AXC 500-6-2 (2,2kW)IE3 NL
CAXPV50004	AXC 500-6-2 (3,0kW)IE3 NL
CAXPV50005	AXC 500-6-2 (4,0kW)IE3 NL
CAXPV50006	AXC 500-6-2 (5,5kW)IE3 NL
CAXPV50007	AXC 500-6-2 (7,5kW)IE3 NL