



# PARTS CATALOG

## R410A

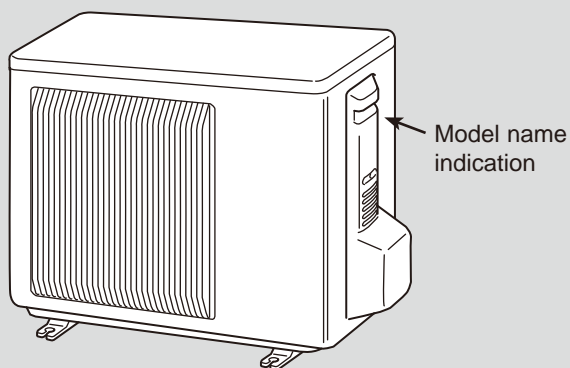
[Model Name]	[Service Ref.]	
SUZ-KA25VA6	SUZ-KA25VA6.TH SUZ-KA25VA6.TH-ET	SUZ-KA25VA6.TH-ER
SUZ-KA35VA6	SUZ-KA35VA6.TH SUZ-KA35VA6.TH-ET	SUZ-KA35VA6.TH-ER
SUZ-KA50VA6	SUZ-KA50VA6.TH SUZ-KA50VA6.TH-ET	SUZ-KA50VA6.TH-ER
SUZ-KA60VA6	SUZ-KA60VA6.TH SUZ-KA60VA6.TH-ET	SUZ-KA60VA6.TH-ER
SUZ-KA71VA6	SUZ-KA71VA6.TH SUZ-KA71VA6.TH-ET	SUZ-KA71VA6.TH-ER

Revision:

- Revise Part No. of RoHS PARTS LIST in REVISED EDITION-A.
- Some descriptions has been modified.

Notes:

- RoHS compliant products have <H> mark on the spec name plate.
- For servicing of RoHS compliant products, refer to the RoHS Parts List.



SUZ-KA25VA6.TH  
SUZ-KA35VA6.TH

## CONTENTS

1. RoHS PARTS LIST.....	2
2. OPTIONAL PARTS.....	10

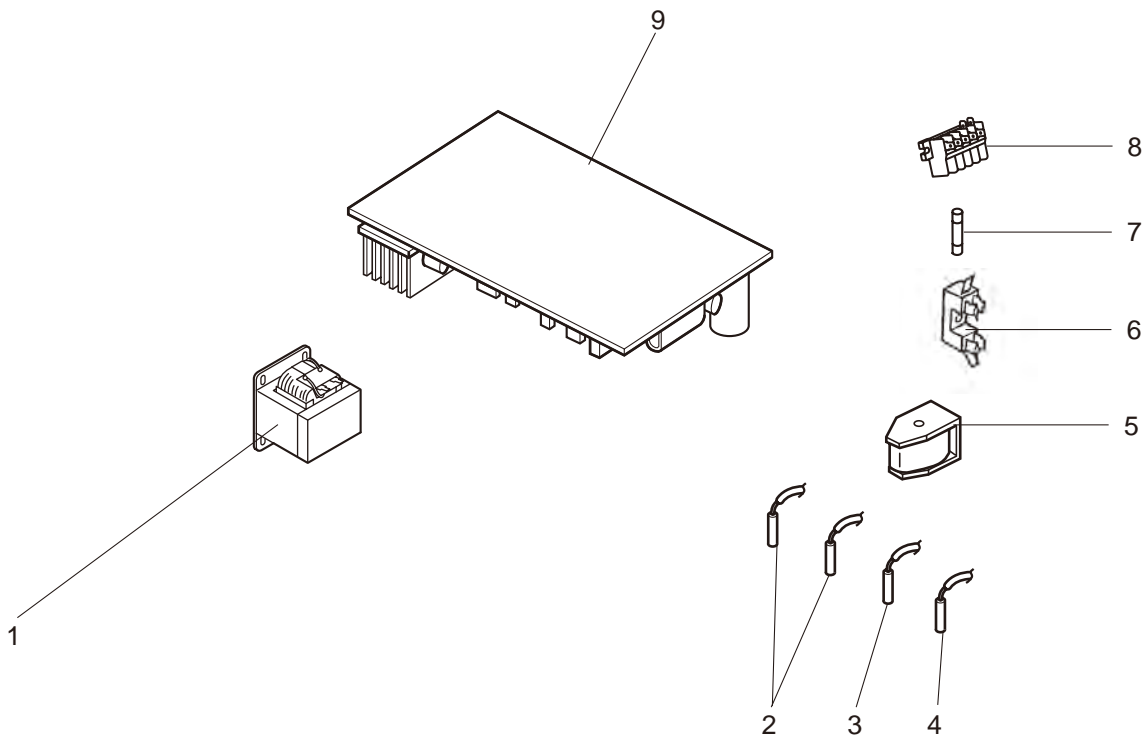
**SERVICE MANUAL (TCH004)**

# 1

## RoHS PARTS LIST

SUZ-KA25VA6.TH      SUZ-KA35VA6.TH  
SUZ-KA25VA6.TH-ER    SUZ-KA35VA6.TH-ER  
SUZ-KA25VA6.TH-ET    SUZ-KA35VA6.TH-ET

### 1-1. OUTDOOR UNIT ELECTRICAL PARTS



# RoHS PARTS LIST

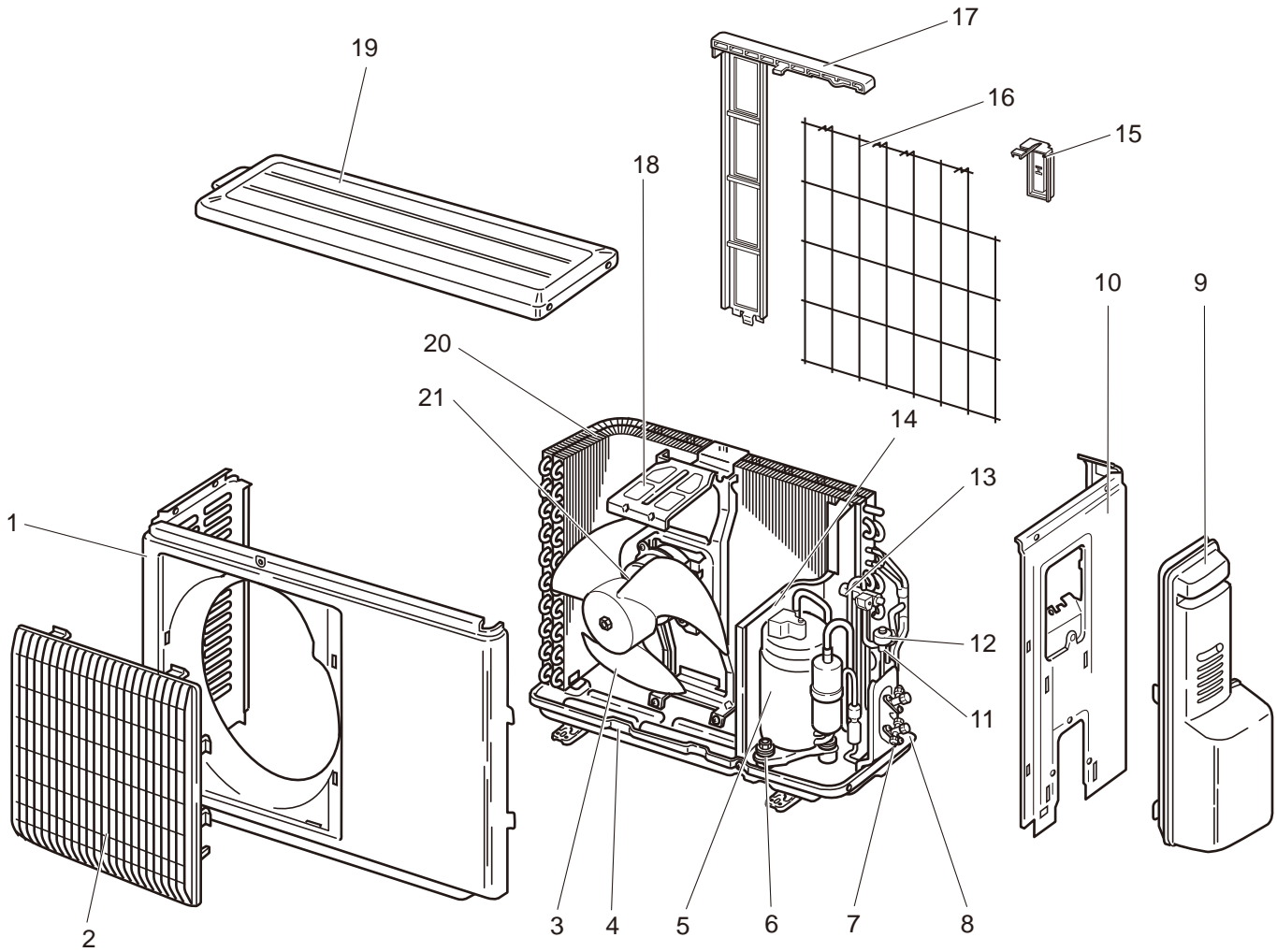
No.	RoHS	Part No.	Part Name	Symbol in Wiring Diagram	Q'ty/unit						Remarks
					SUZ-KA25VA6.TH	SUZ-KA25VA6.TH-ER	SUZ-KA25VA6.TH-ET	SUZ-KA35VA6.TH	SUZ-KA35VA6.TH-ER	SUZ-KA35VA6.TH-ET	
1	H	E22 G10 337	REACTOR	L61	1	1	1				
	H	E22 G11 337	REACTOR	L61				1	1	1	
2	H	E22 C34 306	THERMISTOR SET	RT61,RT62	1	1	1	1	1	1	DEFROST, DISCHARGE
3	H	E22 G10 309	AMBIENT TEMPERATURE THERMISTOR	RT65	1	1	1	1	1	1	
4	H	E22 C34 307	OUTDOOR HEAT EXCHANGER TEMPERATURE THERMISTOR	RT68	1	1	1	1	1	1	
5	H	E22 G10 490	R.V. COIL	21S4	1	1	1	1	1	1	
6	H	E22 735 241	FUSE HOLDER		1	1	1	1	1	1	
7	H	E22 735 382	FUSE	F61	1	1	1	1	1	1	250VAC/20A
8	H	E22 G16 374	TERMINAL BLOCK(OUT)	TB1	1	1	1	1	1	1	5P (S1, S2, S3, L, N)
9	H	E27 C30 451	INVERTER P.C. BOARD		1	1	1				Including heat sink and RT64
	H	E27 E55 451	INVERTER P.C. BOARD					1	1	1	

# RoHS PARTS LIST

SUZ-KA25VA6.TH  
SUZ-KA25VA6.TH-ER  
SUZ-KA25VA6.TH-ET

SUZ-KA35VA6.TH  
SUZ-KA35VA6.TH-ER  
SUZ-KA35VA6.TH-ET

## 1-2. OUTDOOR UNIT STRUCTURAL PARTS AND FUNCTIONAL PARTS



# RoHS PARTS LIST

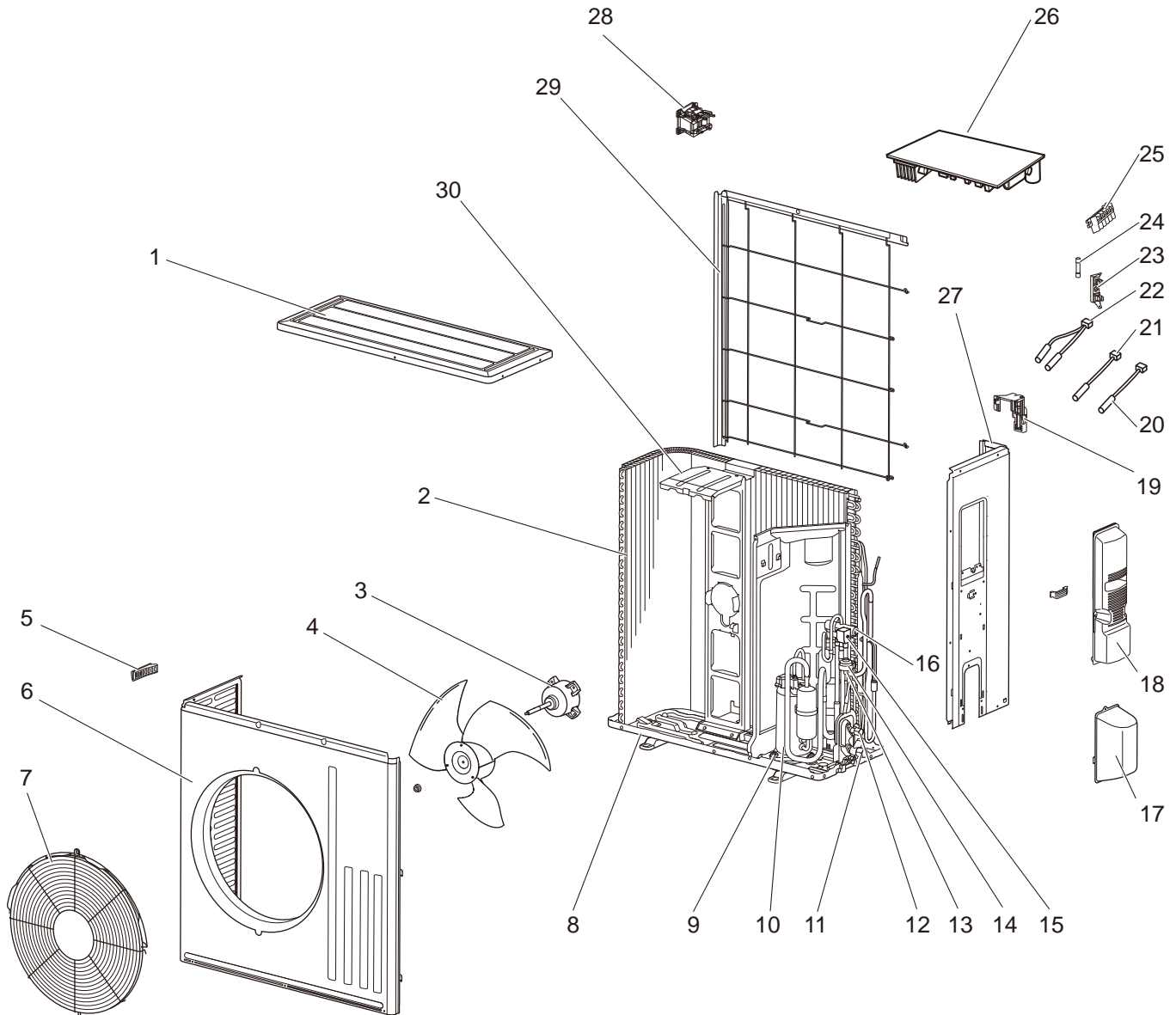
Parts numbers that are circled are not shown in the illustration.

No.	RoHS	Part No.	Part Name	Symbol in Wiring Diagram	Q'ty/unit						Remarks
					SUZ-KA25VA6.TH	SUZ-KA25VA6.TH-ER	SUZ-KA25VA6.TH-ET	SUZ-KA35VA6.TH	SUZ-KA35VA6.TH-ER	SUZ-KA35VA6.TH-ET	
1	H	E22 927 232	CABINET		1	1	1	1	1	1	
2	H	E22 927 521	GRILLE		1	1	1	1	1	1	
3	H	E22 927 501	PROPELLER FAN		1	1	1	1	1	1	
4	H	E22 D69 290	BASE		1	1	1	1	1	1	
5	H	E22 G10 900	COMPRESSOR	MC	1	1	1				KNB073FKFMC
	H	E22 G11 900	COMPRESSOR	MC				1	1	1	KNB092FFAMC
6	H	E22 065 506	COMPRESSOR RUBBER SET		3	3	3	3	3	3	3 RUBBERS/SET
7	H	E22 D69 661	STOP VALVE (GAS)		1	1	1	1	1	1	φ9.52
8	H	E22 D58 662	STOP VALVE (LIQUID)		1	1	1	1	1	1	φ6.35
9	H	E22 927 245	SERVICE PANEL		1	1	1	1	1	1	
10	H	E22 G11 233	BACK PANEL (OUT)		1	1	1				
	H	E22 G12 233	BACK PANEL (OUT)					1	1	1	
11	H	E22 927 640	EXPANSION VALVE		1	1	1	1	1	1	
12	H	E22 G10 493	EXPANSION VALVE COIL	LEV	1	1	1	1	1	1	
13	H	E22 927 961	4-WAY VALVE		1	1	1	1	1	1	
14	H	E22 G10 293	SEPARATOR		1	1	1				
	H	E22 G11 293	SEPARATOR					1	1	1	
15	H	E22 928 079	THERMO HOLDER		1	1	1				
	H	E22 930 079	THERMO HOLDER					1	1	1	
16	H	E22 928 525	CONDENSER WIRE NET		1	1	1				
	H	E22 930 525	CONDENSER WIRE NET					1	1	1	
17	H	E22 928 523	CONDENSER NET		1	1	1				
	H	E22 930 523	CONDENSER NET					1	1	1	
18	H	E22 927 515	MOTOR SUPPORT		1	1	1				
	H	E22 929 515	MOTOR SUPPORT					1	1	1	
19	H	E22 927 297	TOP PANEL		1	1	1	1	1	1	
20	H	E22 G10 630	OUTDOOR HEAT EXCHANGER		1	1	1				
	H	E22 G12 630	OUTDOOR HEAT EXCHANGER					1	1	1	
21	H	E22 P03 301	OUTDOOR FAN MOTOR	MF	1	1	1	1	1	1	RC0J50
22	H	E22 927 937	CAPILLARY TUBE		1	1	1	1	1	1	φ3.0 × φ2.0 × 240
23	H	E22 735 936	CAPILLARY TUBE					2	2	2	φ3.0 × φ1.8 × 600
24	H	E22 838 704	DRAIN SOCKET		1	1	1	1	1	1	

# RoHS PARTS LIST

SUZ-KA50VA6.TH  
SUZ-KA50VA6.TH-ER  
SUZ-KA50VA6.TH-ET

## 1-3. OUTDOOR UNIT STRUCTURAL PARTS, ELECTRICAL PARTS AND FUNCTIONAL PARTS



# RoHS PARTS LIST

Parts numbers that are circled are not shown in the illustration.

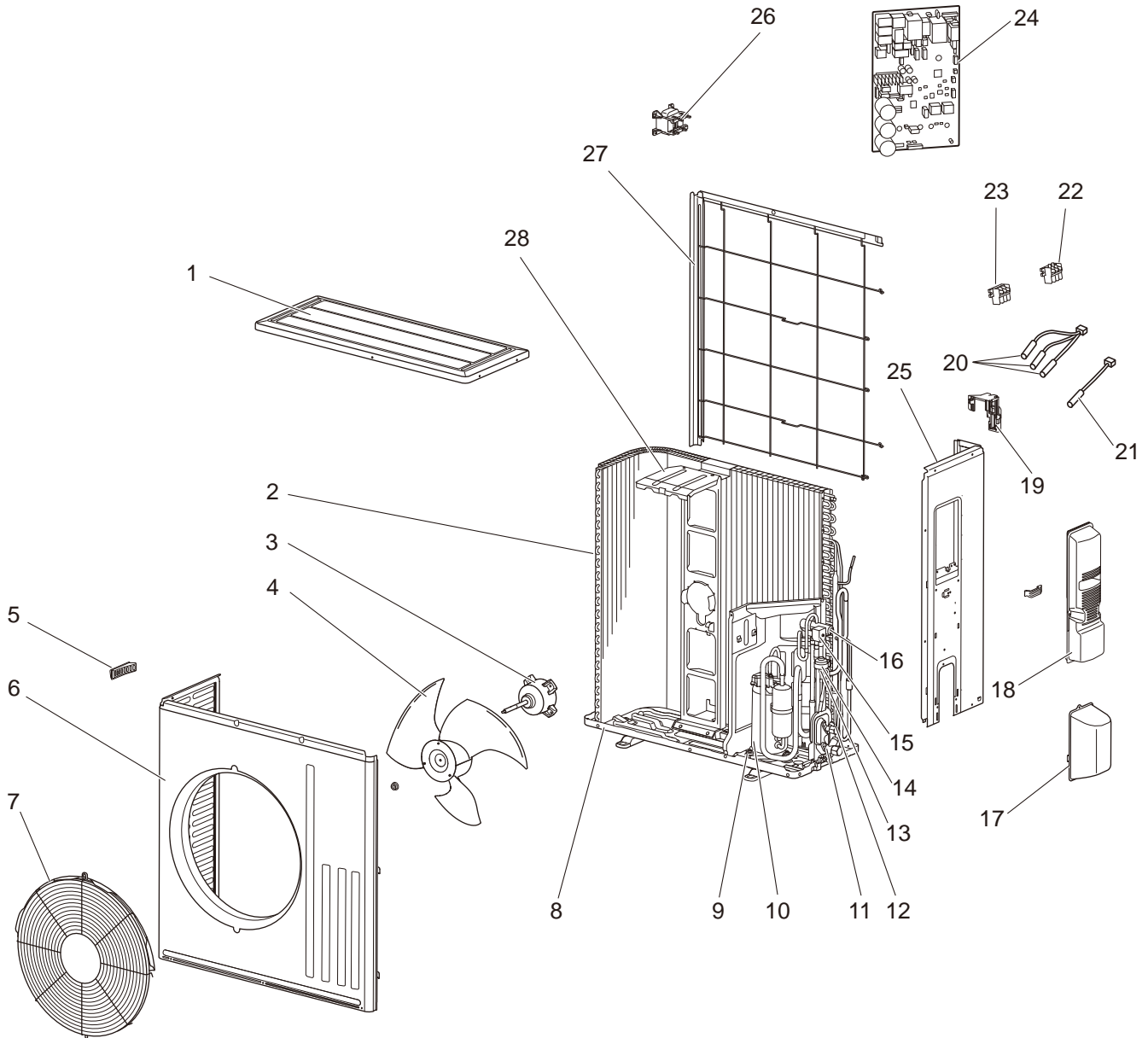
No.	RoHS	Part No.	Part Name	Symbol in Wiring Diagram	Q'ty/unit			Remarks
					SUZ-KA50VA6.TH	SUZ-KA50VA6.TH-ER	SUZ-KA50VA6.TH-ET	
1	H	E22 L87 297	TOP PANEL		1	1	1	
2	H	E27 804 630	OUTDOOR HEAT EXCHANGER		1	1	1	
3	H	E22 G16 301	OUTDOOR FAN MOTOR	MF	1	1	1	RC0J60
4	H	E22 F28 501	PROPELLER FAN		1	1	1	
5	H	E22 817 009	HANDLE		1	1	1	
6	H	E22 R13 232	CABINET		1	1	1	
7	H	E22 F73 521	FAN GUARD		1	1	1	Including ice guard
8	H	E22 F28 290	BASE		1	1	1	
9	H	E22 C34 506	COMPRESSOR RUBBER SET		3	3	3	3 RUBBERS/SET
10	H	E22 F28 900	COMPRESSOR	MC	1	1	1	SNB130FGBMT
11	H	E22 G16 661	STOP VALVE (GAS)		1	1	1	ø12.7
12	H	E22 G16 662	STOP VALVE (LIQUID)		1	1	1	ø6.35
13	H	E22 851 640	EXPANSION VALVE		1	1	1	
14	H	E22 F28 493	EXPANSION VALVE COIL	LEV	1	1	1	
15	H	E22 G16 490	R.V. COIL	21S4	1	1	1	
16	H	E22 C18 961	4-WAY VALVE		1	1	1	
17	H	E22 F28 650	VALVE COVER		1	1	1	
18	H	E22 G16 245	SERVICE PANEL		1	1	1	
19	H	E22 F28 079	THERMO HOLDER		1	1	1	
20	H	E22 G16 309	AMBIENT TEMPERATURE THERMISTOR	RT65	1	1	1	
21	H	E22 G16 307	OUTDOOR HEAT EXCHANGER TEMPERATURE THERMISTOR	RT68	1	1	1	
22	H	E22 G16 308	THERMISTOR SET	RT61,RT62	1	1	1	DEFROST, DISCHARGE
23	H	E22 735 241	FUSE HOLDER		1	1	1	
24	H	E22 735 382	FUSE	F61	1	1	1	T20AL/250VAC
25	H	E22 G16 374	TERMINAL BLOCK	TB	1	1	1	5 P (S1, S2, S3, L, N)
26	H	E27 E56 451	INVERTER P.C. BOARD		1	1	1	Including heat sink and RT64
27	H	E22 F28 233	BACK PANEL (OUT)		1	1	1	
28	H	E22 D58 337	REACTOR	L61	1	1	1	
29	H	E22 L87 523	CONDENSER NET		1	1	1	
30	H	E22 F28 515	MOTOR SUPPORT		1	1	1	
31	H	E22 527 936	CAPILLARY TUBE		1	1	1	ø4.0 × ø2.4 × 100
32	H	E22 F28 704	DRAIN SOCKET		1	1	1	

# RoHS PARTS LIST

SUZ-KA60VA6.TH  
SUZ-KA60VA6.TH-ER  
SUZ-KA60VA6.TH-ET

SUZ-KA71VA6.TH  
SUZ-KA71VA6.TH-ER  
SUZ-KA71VA6.TH-ET

## 1-4. OUTDOOR UNIT STRUCTURAL PARTS, ELECTRICAL PARTS AND FUNCTIONAL PARTS





# RoHS PARTS LIST

Parts numbers that are circled are not shown in the illustration.

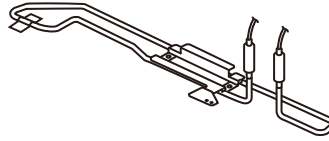
No.	RoHS	Part No.	Part Name	Symbol in Wiring Diagram	Q'ty/unit						Remarks
					SUZ-KA60VA6.TH	SUZ-KA60VA6.TH-ER	SUZ-KA60VA6.TH-ET	SUZ-KA71VA6.TH	SUZ-KA71VA6.TH-ER	SUZ-KA71VA6.TH-ET	
1	H	E22 L87 297	TOP PANEL		1	1	1	1	1	1	
2	H	E27 805 630	OUTDOOR HEAT EXCHANGER		1	1	1				
	H	E27 806 630	OUTDOOR HEAT EXCHANGER					1	1	1	
3	H	E22 F28 301	OUTDOOR FAN MOTOR	MF	1	1	1	1	1	1	
4	H	E22 F28 501	PROPELLER FAN		1	1	1	1	1	1	
5	H	E22 817 009	HANDLE		1	1	1	1	1	1	
6	H	E22 R13 232	CABINET		1	1	1	1	1	1	
7	H	E22 F73 521	FAN GUARD		1	1	1	1	1	1	
8	H	E22 F28 290	BASE		1	1	1	1	1	1	
9	H	E22 C34 506	COMPRESSOR RUBBER SET		3	3	3	3	3	3	3 RUBBERS/SET
10	H	E22 F28 900	COMPRESSOR	MC	1	1	1				SNB130FGBMT
	H	E22 J40 900	COMPRESSOR	MC				1	1	1	SNB172FEKMT
11	H	E22 F28 661	STOP VALVE(GAS)		1	1	1	1	1	1	φ15.88
12	H	E22 F28 662	STOP VALVE(LIQUID)		1	1	1				φ6.35
	H	E22 F29 662	STOP VALVE(LIQUID)					1	1	1	φ9.52
13	H	E22 851 640	EXPANSION VALVE		1	1	1				
	H	E22 853 640	EXPANSION VALVE					1	1	1	
14	H	E22 F28 493	EXPANSION VALVE COIL	LEV	1	1	1	1	1	1	
15	H	E22 F28 490	R.V.COIL	21S4	1	1	1	1	1	1	
16	H	E22 C18 961	4-WAY VALVE		1	1	1	1	1	1	
17	H	E22 F28 650	VALVE COVER		1	1	1	1	1	1	
18	H	E22 F28 245	SERVICE PANEL		1	1	1	1	1	1	
19	H	E22 F28 079	THERMO HOLDER		1	1	1	1	1	1	
20	H	E22 F28 308	THERMISTOR SET	RT61, RT62, RT68	1	1	1	1	1	1	DEFROST, DISCHARGE, OUTDOOR HEAT EXCHANGER TEMPERATURE
21	H	E22 F28 309	AMBIENT TEMPERATURE THERMISTOR	RT65	1	1	1	1	1	1	
22	H	E22 F28 374	TERMINAL BLOCK	TB1	1	1	1	1	1	1	3P (L, N, ⊕)
23	H	E22 F29 374	TERMINAL BLOCK	TB2	1	1	1	1	1	1	3P (S1, S2, S3)
24	H	E27 E57 451	INVERTER P.C. BOARD		1	1	1				Including heat sink and RT64
	H	E27 E58 451	INVERTER P.C. BOARD					1	1	1	
25	H	E22 F28 233	BACK PANEL (OUT)		1	1	1	1	1	1	
26	H	E22 F28 337	REACTOR	L61	1	1	1	1	1	1	
27	H	E22 L87 523	CONDENSER NET		1	1	1	1	1	1	
28	H	E22 F28 515	MOTOR SUPPORT		1	1	1	1	1	1	
29	H	E22 527 936	CAPILLARY TUBE		1	1	1	1	1	1	φ4.0 × φ2.4 × 100
30	H	E22 F28 704	DRAIN SOCKET		1	1	1	1	1	1	

## 2

# OPTIONAL PARTS

### 2-1. DEFROST HEATER

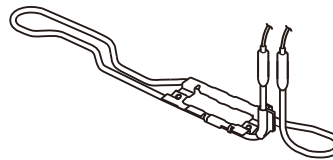
Model	Parts No.
SUZ-KA25/35VA6	MAC-643BH-E



#### Components

① Defrost heater	1	④ Cable tie	1	⑦ Wiring diagram	1
② Aluminium tape	1	⑤ Self drilling screw	2	⑧ Spec label	1
③ Heater support	1	⑥ Insulation	1		

Model	Parts No.
SUZ-KA50VA6	MAC-644BH-E



#### Components

① Defrost heater	1	④ Cable clamp	1	⑦ Spec label	1
② Heater support	1	⑤ Self drilling screw	2		
③ Insulation	1	⑥ Wiring diagram	1		

## MITSUBISHI ELECTRIC CORPORATION

HEAD OFFICE: TOKYO BUILDING., 2-7-3, MARUNOUCHI, CHIYODA-KU, TOKYO 100-8310, JAPAN

MITSUBISHI ELECTRIC CONSUMER PRODUCTS (THAILAND) CO., LTD.  
 700/406 MOO 7, TAMBON DON HUA ROH,  
 AMPHUR MUANG, CHONBURI 20000 THAILAND  
 Issued : Nov. 2019 No. TCB004 REVISD EDITION-A  
 Published : Nov. 2016 TCB004  
 Made in Thailand

New publication, effective Nov. 2019  
 Specifications are subject to change without notice.

TCB004A