

PARTS CATALOG

R32

Outdoor unit
[Model Name]

[Service Ref.]

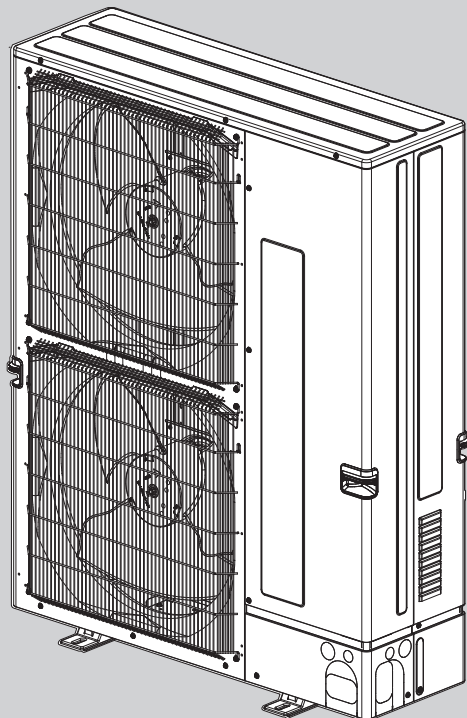
PUZ-ZM200YKA

PUZ-ZM200YKA.UK
PUZ-ZM200YKAR1
PUZ-ZM250YKA.UK
PUZ-ZM250YKAR1

PUZ-ZM250YKA

Note:
 • PUZ-ZM200YKAR1 and PUZ-ZM250YKAR1 have been added in REVISED EDITION-A.
 • Some descriptions have been modified.

OCB738 is void.



PUZ-ZM200YKA.UK
PUZ-ZM250YKA.UK

CONTENTS

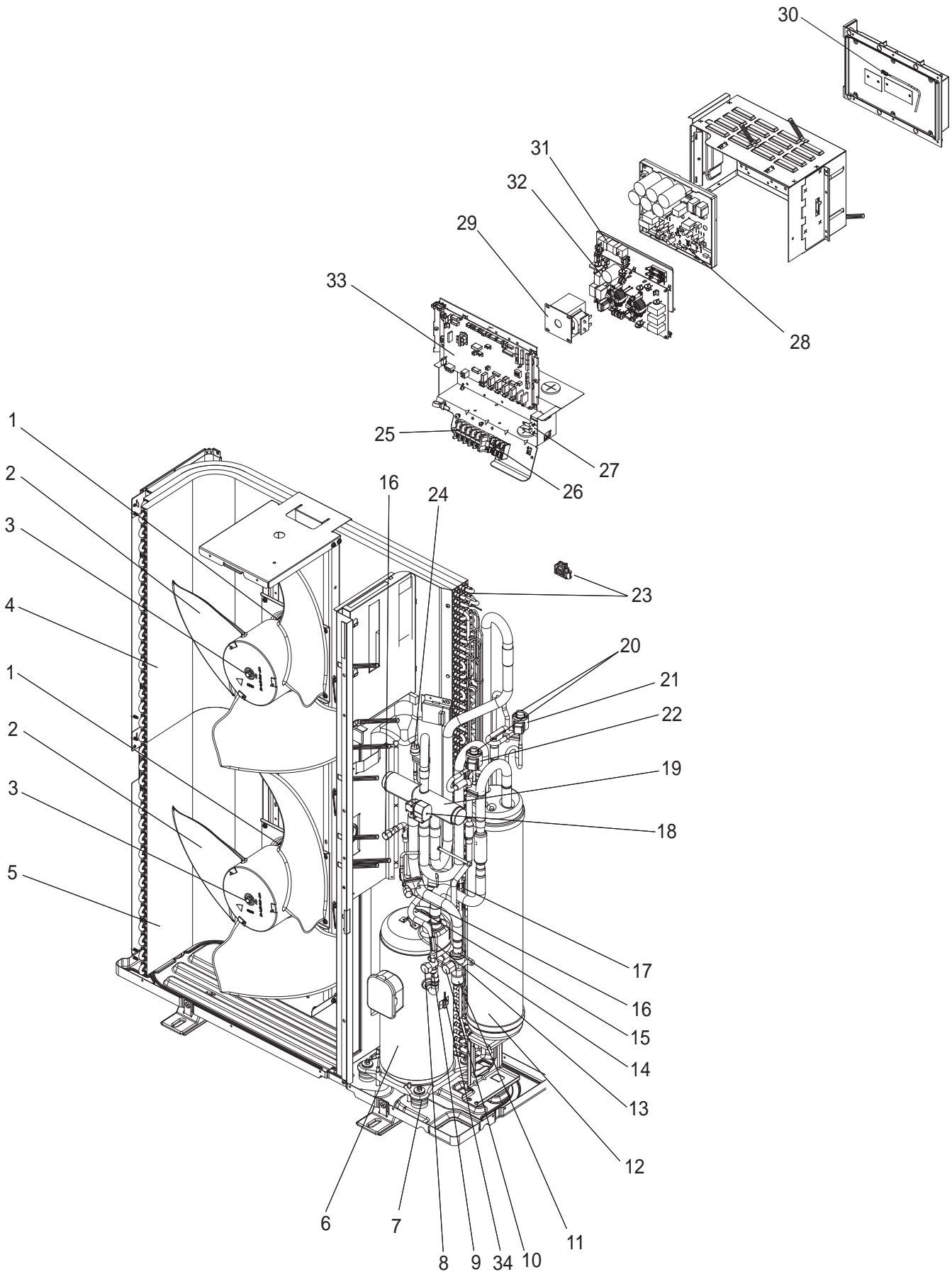
1. SERVICE PARTS LIST 2

SERVICE MANUAL (OCH738)

FUNCTIONAL AND ELECTRICAL PARTS

PUZ-ZM200YKA.UK

PUZ-ZM250YKA.UK

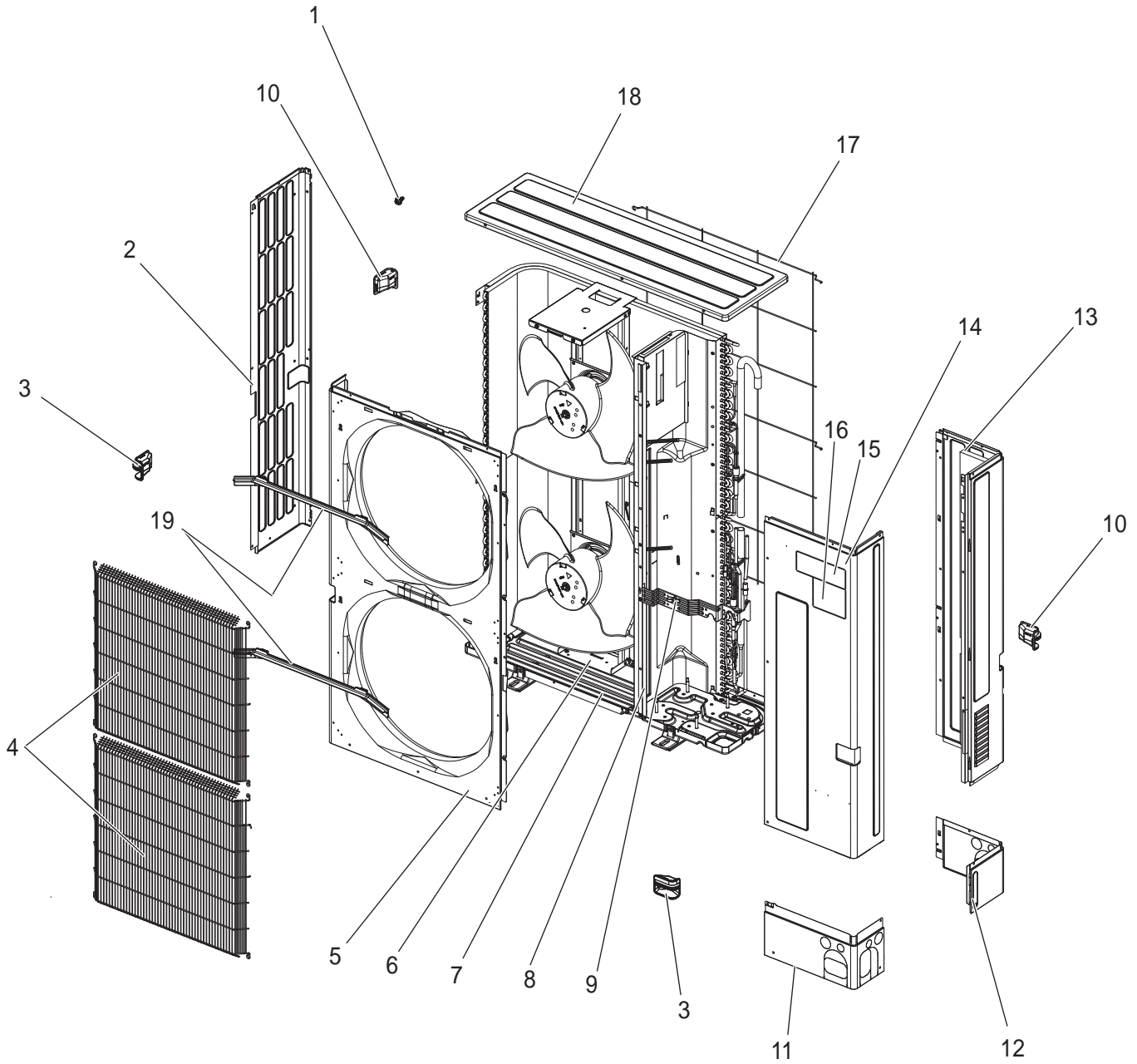


1. The part quantity below indicates the required number of pieces per unit.
2. The circled No. indicates that the part is not shown in the figure.

| No. | Parts No. | Parts Name | PUZ-ZM200YKA.UK | PUZ-ZM250YKA.UK | Wiring Diagram Symbol | Remarks |
|-----|---------------------|-----------------------------|-----------------|-----------------|-------------------------------------|------------------|
| 1 | S 7 0 E 9 6 7 6 3 | FAN MOTOR | 2 | 2 | MF1, 2 | |
| 2 | S 7 0 E 5 0 1 1 5 | PROPELLER FAN | 2 | 2 | | |
| 3 | S 7 0 K 0 1 0 9 7 | NUT | 2 | 2 | | |
| 4 | S 7 0 E 3 6 4 0 8 | HEAT EXCHANGER (TOP) | 1 | 1 | | |
| 5 | S 7 0 E 3 7 4 0 8 H | HEAT EXCHANGER (UNDER) | 1 | 1 | | |
| 6 | S 7 0 E 4 5 4 0 0 | COMPRESSOR | 1 | 1 | MC | AVB52FBAMT |
| 7 | S 7 0 E 0 2 0 0 4 | RUBBER MOUNT | 4 | 4 | | |
| 8 | S 7 0 6 0 0 4 1 8 | STOP VALVE (LIQUID) | 1 | | | 3/8" |
| 8 | S 7 0 7 0 0 4 1 8 | STOP VALVE (LIQUID) | | 1 | | 1/2" |
| 9 | S 7 0 E 1 7 0 9 7 | FLARE NUT | 1 | | | 3/8" |
| 9 | S 7 0 0 B 1 0 9 7 | FLARE NUT | | 1 | | 1/2" |
| 10 | S 7 0 E 0 8 4 1 1 | BALL VALVE (GAS) | 1 | 1 | | 3/4" |
| 11 | S 7 0 E 1 6 0 9 7 | FLARE NUT GAS | 1 | 1 | | 3/4" |
| 12 | S 7 0 E 2 5 4 4 0 | POWER RECEIVER | 1 | 1 | | |
| 13 | S 7 0 E 5 7 2 0 2 | THERMISTOR | 1 | 1 | TH4 (Discharge) | |
| 14 | S 7 0 4 2 L 4 5 0 | STRAINER | 1 | 1 | | 50# |
| 15 | S 7 0 E 8 2 2 0 2 | THERMISTOR | 1 | 1 | TH33 (Comp. surface) | |
| 16 | S 7 0 E 0 2 4 1 3 | CHARGE PLUG | 2 | 2 | | |
| 17 | S 7 0 E 5 8 2 0 2 | THERMISTOR | 1 | 1 | TH3 (Liquid) | |
| 18 | S 7 0 E 0 9 2 4 2 | SOLENOID COIL <4-WAY VALVE> | 1 | 1 | 21S4 | |
| 19 | S 7 0 E 0 6 4 0 3 | 4-WAY VALVE | 1 | 1 | | |
| 20 | S 7 0 E 9 7 4 0 1 | EXPANSION VALVE | 2 | 2 | | UKV-40D352 |
| 21 | S 7 0 E 3 0 4 0 2 | LINEAR EXPANSION VALVE COIL | 1 | 1 | LEV-A (WHITE) | UKV-A277 |
| 22 | S 7 0 E 4 0 4 0 2 | LINEAR EXPANSION VALVE COIL | 1 | 1 | LEV-B (RED) | UKV-A358 |
| 23 | S 7 0 E 3 1 2 0 2 | THERMISTOR | 1 | 1 | TH6 (Ambient) TH7 (2-phase pipe) | |
| 24 | S 7 0 E 1 0 2 0 8 H | HIGH PRESSURE SWITCH | 1 | 1 | 63H | OFF 4.14 MPa |
| 25 | S 7 0 E 0 9 7 1 6 | TERMINAL BED | 1 | 1 | TB1 | 5P(L1,L2,L3 N,E) |
| 26 | S 7 0 E 0 8 7 1 6 | TERMINAL BED | 1 | 1 | TB2 | 3P(S1,S2,S3) |
| 27 | S 7 0 K 2 5 2 5 9 | REACTOR | 1 | 1 | ACL4 | |
| 28 | S 7 0 M 2 0 3 1 3 | POWER CIRCUIT BOARD | 1 | 1 | P.B. | |
| 29 | S 7 0 K 3 5 2 5 9 | REACTOR | 1 | 1 | DCL | |
| 30 | S 7 0 E 5 5 2 0 2 | THERMISTOR | 1 | 1 | TH8 (Heat sink) | |
| 31 | S 7 0 E 2 0 2 3 4 | RESISTOR | 1 | 1 | RS | |
| 32 | S 7 0 M 1 0 3 4 6 | NOISE FILTER CIRCUIT BOARD | 1 | 1 | N.F. | |
| 33 | S 7 0 M 4 0 3 1 5 | CONTROLLER CIRCUIT BOARD | 1 | 1 | C.B. | |
| 34 | S 7 0 E 0 5 7 0 6 | THERMAL PROTECTOR ASSY | 1 | 1 | TRS | |

STRUCTURAL PARTS
PUZ-ZM200YKA.UK

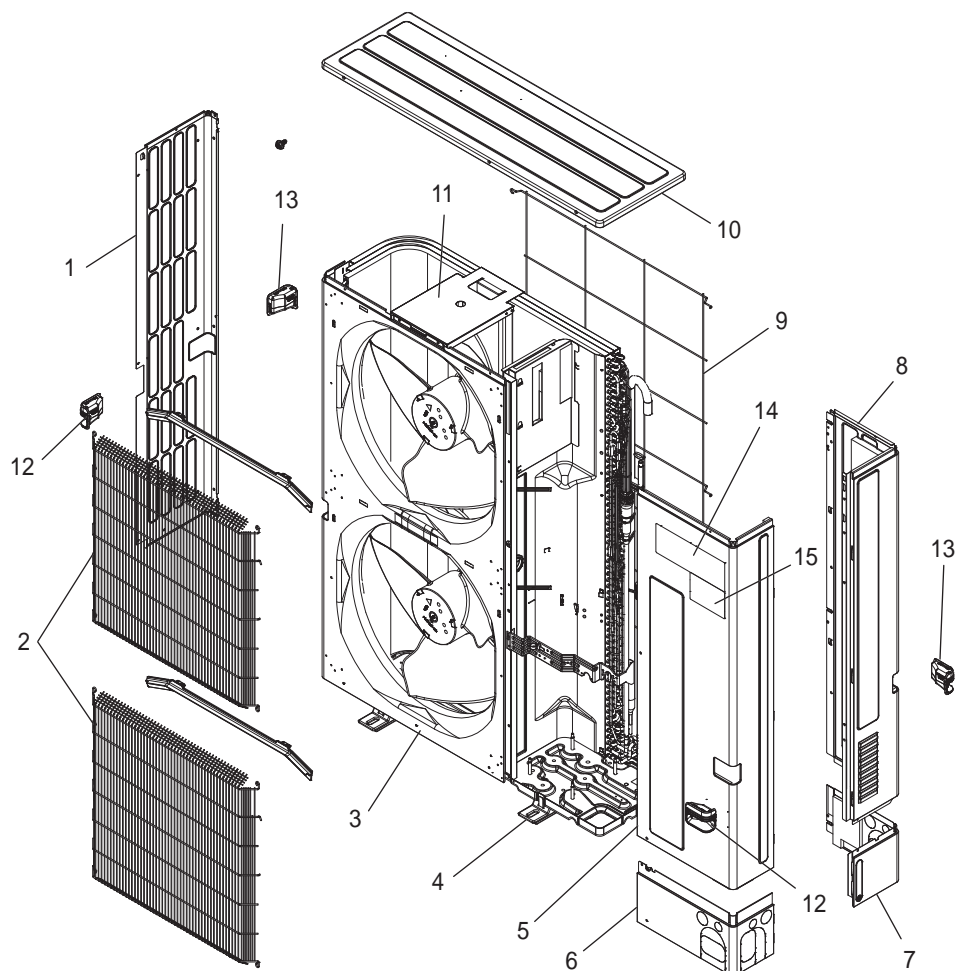
PUZ-ZM250YKA.UK



1. The part quantity below indicates the required number of pieces per unit.
2. The circled No. indicates that the part is not shown in the figure.

| No. | Parts No. | Parts Name | PUZ-ZM200YKA.UK | PUZ-ZM250YKA.UK | Remarks [Drawing No.] |
|-----|-------------------|---------------------|-----------------|-----------------|--------------------------|
| 1 | — | F.ST SCREW | 64 | 64 | (5x12), [DG12F536H12] |
| 2 | S 7 0 E 1 7 6 6 2 | SIDE PANEL (L) | 1 | 1 | |
| 3 | S 7 0 E 2 0 6 5 5 | HANDLE (FRONT) | 2 | 2 | |
| 4 | S 7 0 E 4 0 6 7 5 | FAN GRILLE | 2 | 2 | |
| 5 | S 7 0 E 6 1 6 6 8 | FRONT PANEL | 1 | 1 | |
| 6 | S 7 0 E 9 5 1 3 0 | MOTOR SUPPORT | 1 | 1 | |
| 7 | S 7 0 E 9 1 6 8 6 | BASE ASSY | 1 | 1 | |
| 8 | — | SEPARATOR | 1 | 1 | [BK00N021G60] |
| 9 | — | VALVE BED ASSY | 1 | 1 | [GK00C012G01] |
| 10 | S 7 0 E 3 0 6 5 5 | HANDLE (REAR) | 2 | 2 | |
| 11 | S 7 0 E 5 5 6 5 8 | COVER PANEL (FRONT) | 1 | 1 | |
| 12 | S 7 0 E 6 5 6 5 8 | COVER PANEL (REAR) | 1 | 1 | |
| 13 | S 7 0 E 1 8 6 6 2 | SIDE PANEL (R) | 1 | 1 | |
| 14 | S 7 0 E 4 7 6 6 1 | SERVICE PANEL | 1 | 1 | |
| 15 | S 7 0 E 9 4 6 9 9 | LABEL (BRAND) | 1 | 1 | |
| 16 | S 7 0 E 9 0 6 9 9 | LABEL (MITSUBISHI) | 1 | 1 | |
| 17 | S 7 0 E 3 0 6 9 8 | REAR GUARD | 1 | 1 | |
| 18 | S 7 0 E 4 0 6 4 1 | TOP PANEL | 1 | 1 | |
| 19 | S 7 0 E 1 0 6 3 1 | ICE GUARD | 2 | 2 | |

STRUCTURAL PARTS

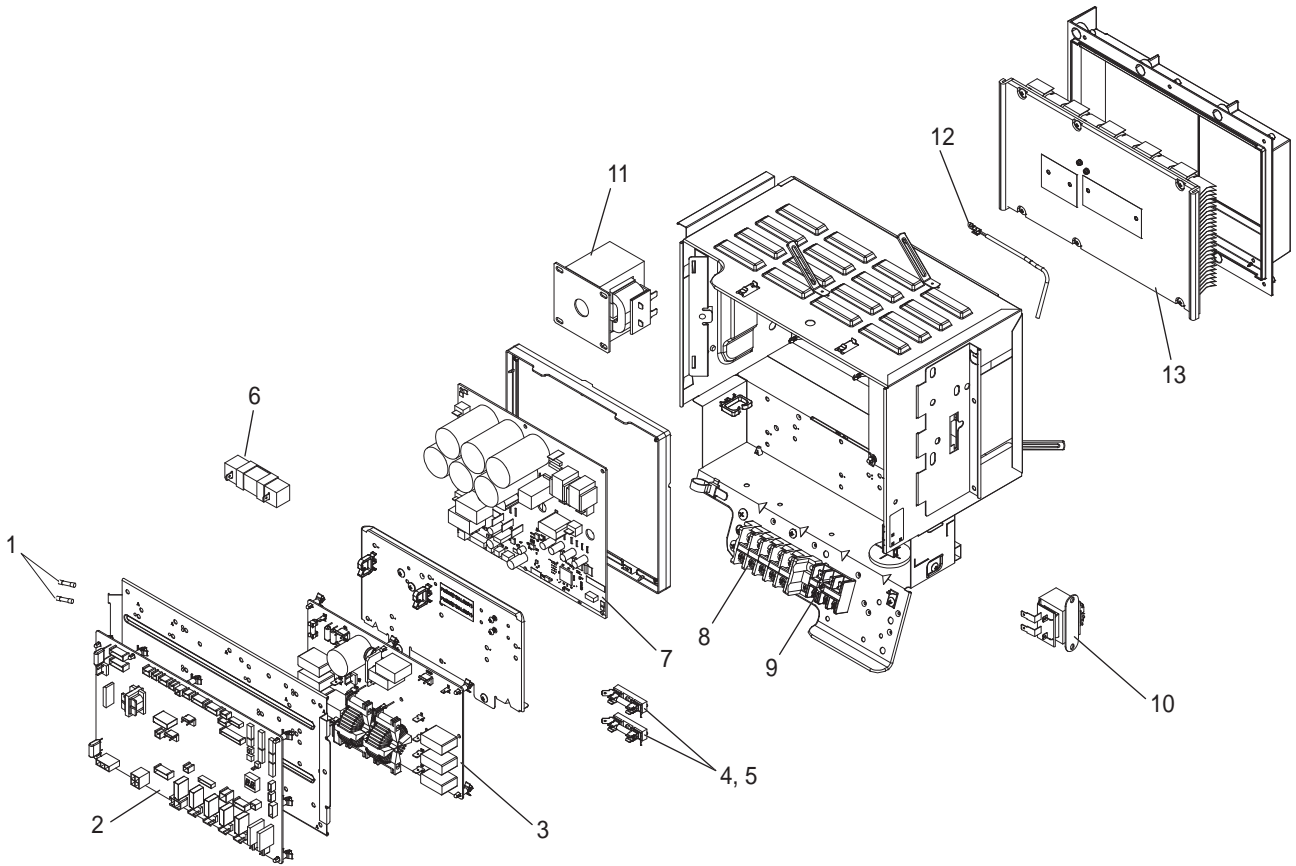


1. The part quantity below indicates the required number of pieces per unit.

2. The circled No. indicates that the part is not shown in the figure.

| No. | Parts No. | Parts Name | PUZ-ZM200YKAR1 | PUZ-ZM250YKAR1 | Remarks |
|-----|-------------------|-----------------------|----------------|----------------|---------|
| 1 | R 0 1 E 3 0 6 6 2 | SIDE PANEL (L) | 1 | 1 | |
| 2 | T 7 W E 1 3 6 9 1 | WIRE GRILLE | 2 | 2 | |
| 3 | R 0 1 E 2 3 6 6 8 | FRONT PANEL | 1 | 1 | |
| 4 | R 0 1 E 5 3 6 8 6 | BASE ASSY | 1 | 1 | |
| 5 | T 7 W E 2 1 6 6 7 | SERVICE PANEL | 1 | 1 | |
| 6 | R 0 1 E 4 1 6 5 8 | COVER PANEL (FRONT) | 1 | 1 | |
| 7 | T 7 W R 0 0 6 5 8 | COVER PANEL (REAR) | 1 | 1 | |
| 8 | T 7 W E 3 0 6 6 1 | SIDE PANEL (R) | 1 | 1 | |
| 9 | R 0 1 E 1 0 6 9 8 | REAR GUARD | 1 | 1 | |
| 10 | R 0 1 E 3 6 6 4 1 | TOP PANEL | 1 | 1 | |
| 11 | R 0 1 E 6 0 1 3 0 | MOTOR SUPPORT | 1 | 1 | |
| 12 | R 0 1 E 0 5 6 5 5 | HANDLE (FRONT) | 2 | 2 | |
| 13 | R 0 1 E 0 6 6 5 5 | HANDLE (REAR) | 2 | 2 | |
| 14 | T 7 W B 0 0 0 0 5 | BRAND LABEL | 1 | 1 | |
| 15 | T 7 W A 1 2 0 0 5 | BRAND LABEL (MR.SLIM) | 1 | 1 | |

ELECTRICAL PARTS



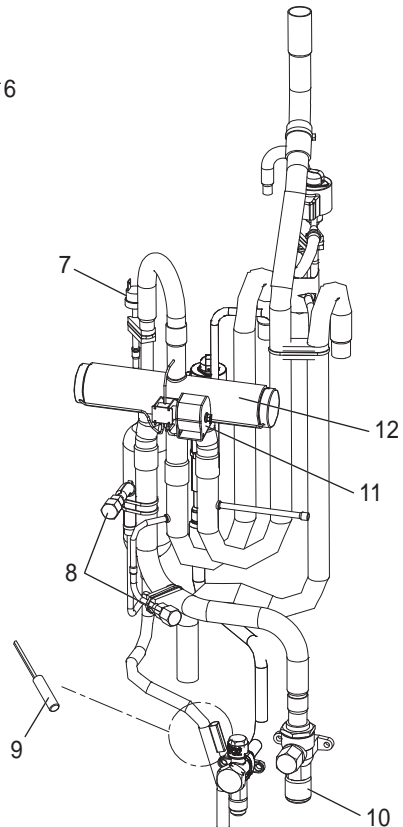
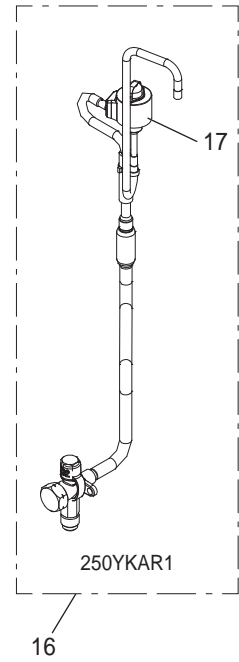
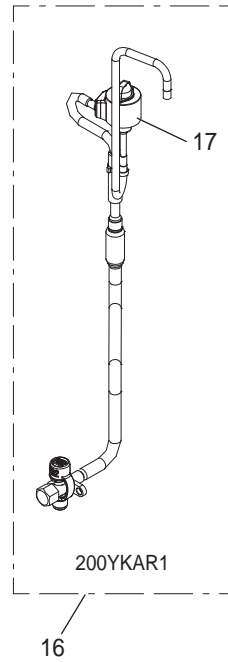
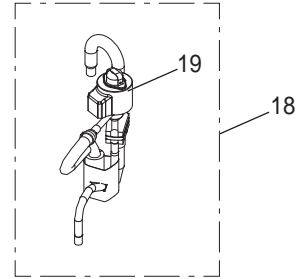
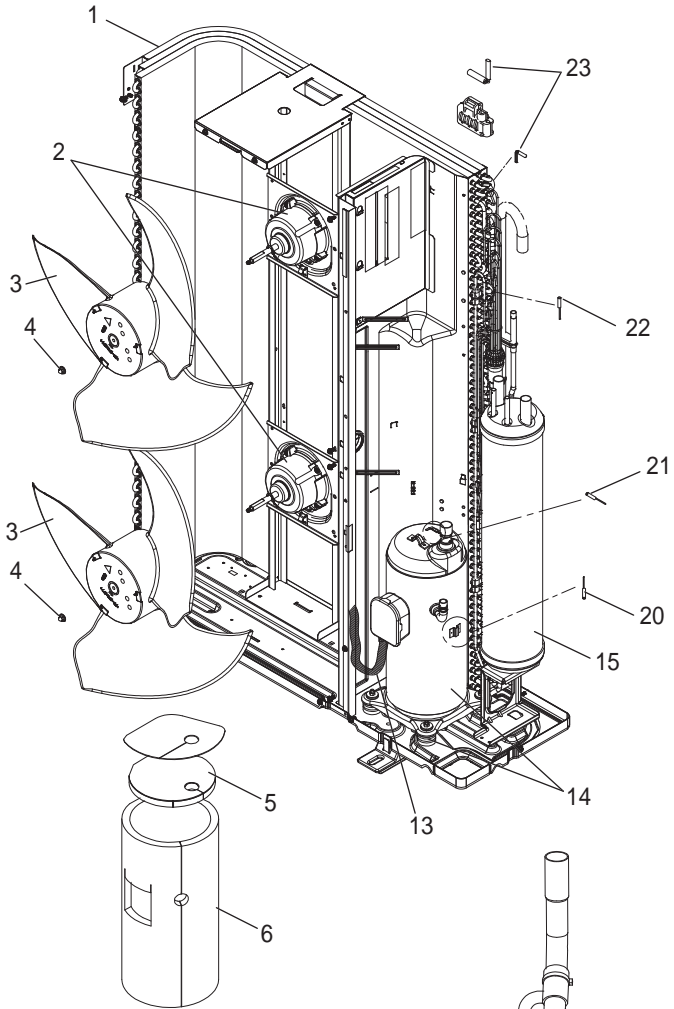
1. The part quantity below indicates the required number of pieces per unit.
2. The circled No. indicates that the part is not shown in the figure.

| No. | Parts No. | Parts Name | PUZ-ZM200YKAR1 | PUZ-ZM250YKAR1 | Wiring Diagram Symbol | Remarks |
|-----|-------------------|-------------------|----------------|----------------|-----------------------|-----------------|
| 1 | R 0 1 E 1 4 2 3 9 | FUSE 6.3 A 250 V | 2 | 2 | F3, F4 | |
| 2 | T 7 W S 2 6 3 1 5 | CONTROLLER BOARD | 1 | 1 | C.B. | |
| 3 | T 7 W E 4 1 3 4 6 | NOISE FILTER | 1 | 1 | N.F. | |
| 4 | R 0 1 E 0 7 2 3 9 | FUSE 15 A 250 V | 2 | 2 | FUSE1, 2 | |
| 5 | R 0 1 3 0 L 2 4 1 | FUSE HOLDER | 2 | 2 | | |
| 6 | R 0 1 E 1 0 2 3 3 | RESISTOR | 1 | 1 | RS | |
| 7 | T 7 W S 1 4 3 2 3 | POWER BOARD | 1 | 1 | P.B. | |
| 8 | T 7 W E 3 0 7 1 6 | T.B./L1.L2.L3.N.E | 1 | 1 | TB1 | |
| 9 | R 0 1 E 1 9 2 4 6 | T.B./S1.S2.S3 | 1 | 1 | TB2 | |
| 10 | T 7 W E 1 6 2 5 9 | REACTOR | 1 | 1 | ACL4 | |
| 11 | T 7 W E 1 3 2 5 9 | REACTOR | 1 | 1 | DCL | |
| 12 | R 0 1 M 1 6 2 0 2 | THERMISTOR (HS) | 1 | 1 | TH8 (Heat sink) | |
| 13 | T 7 W A 0 6 3 7 1 | HEAT SINK | 1 | 1 | | Includes SCREWS |

FUNCTIONAL PARTS

PUZ-ZM200YKAR1

PUZ-ZM250YKAR1



1. The part quantity below indicates the required number of pieces per unit.
2. The circled No. indicates that the part is not shown in the figure.

| No. | Parts No. | Parts Name | PUZ-ZM200YKAR1 | PUZ-ZM250YKAR1 | Wiring Diagram Symbol | Remarks |
|-----|-------------------|----------------------|----------------|----------------|-------------------------------------|-------------------------------------|
| 1 | T 7 W F 0 2 4 0 8 | HEAT EXCHANGER | 1 | 1 | | |
| 2 | R 0 1 E 8 5 2 2 1 | FAN MOTOR | 2 | 2 | MF1, 2 | |
| 3 | R 0 1 E 1 6 1 1 5 | PROPELLER FAN/D550 | 2 | 2 | | |
| 4 | R 0 1 E 1 6 0 9 7 | CAP NUT (MEC) M6 | 2 | 2 | | |
| 5 | R 0 1 A 7 7 6 0 2 | COMP FELT (TOP) | 1 | 1 | | |
| 6 | T 7 W B 1 2 6 0 2 | COMP FELT-B/AVB52 | 1 | 1 | | |
| 7 | R 0 1 H 0 6 2 0 8 | HIGH PRESSURE SWITCH | 1 | 1 | 63H | |
| 8 | R 0 1 E 3 1 4 1 3 | CHARGE PLUG/LB90 | 2 | 2 | | Hi/Lo |
| 9 | R 0 1 E 3 5 2 0 1 | THERMISTOR (DIS) | 1 | 1 | TH4 (Discharge) | |
| 10 | R 0 1 E 1 3 4 1 1 | BALL VALVE&STRAINER | 1 | 1 | | 3/4 |
| 11 | T 7 W E 9 6 2 4 2 | SOLENOID COIL (21S4) | 1 | 1 | 21S4 | Includes SCREW |
| 12 | R 0 1 E 3 8 4 0 3 | 4WAY VALVE | 1 | 1 | 21S4 | |
| 13 | T 7 W C 0 7 5 1 0 | LEAD ASSY COMP | 1 | 1 | | |
| 14 | T 9 7 4 A 0 0 0 0 | COMPRESSOR | 1 | 1 | MC | AVB52FBAMT Includes RUBBER MOUNT |
| 15 | T 7 W R 0 0 4 4 0 | POWER RECEIVER | 1 | 1 | | |
| 16 | T 7 W B 1 3 4 0 1 | LEV ASSY-B/REC-V | 1 | | LEV-B | |
| 16 | T 7 W B 1 4 4 0 1 | LEV ASSY-B/REC-V | | 1 | LEV-B | |
| 17 | R 0 1 H 3 4 2 4 2 | COIL(LEV)/XAP-5P RED | 1 | 1 | LEV-B | |
| 18 | T 7 W A 1 3 4 0 1 | LEV ASSY-A/C-REC | 1 | 1 | LEV-A | |
| 19 | R 0 1 H R 7 2 4 2 | COIL(LEV)/XAP-5P WH | 1 | 1 | LEV-A | |
| 20 | T 7 W E 2 5 2 0 1 | TRS ASSY | 1 | 1 | TRS | |
| 21 | R 0 1 E 3 9 2 0 1 | THERMISTOR (SHELL) | 1 | 1 | TH33 (Compressor) | |
| 22 | R 0 1 N 0 1 2 0 2 | THERMISTOR-H | 1 | 1 | TH3 (Liquid) | |
| 23 | R 0 1 H 9 6 2 0 2 | THERMISTOR W | 1 | 1 | TH6 (2-Phase Pipe) TH7 (Ambient) | Combined Port |

Mr. SLIM

mitsubishi electric corporation

HEAD OFFICE: TOKYO BUILDING, 2-7-3, MARUNOUCHI, CHIYODA-KU, TOKYO 100-8310, JAPAN