

# SERVICE PARTS LIST FOR MITSUBISHI ELECTRIC PACKAGED AIR-CONDITIONERS

**Series : PURY-(E)P•Y(S)JM-A(-BS)**

**For use with the R410A**

**REVISED**

**Nov. 2013**

**BWE1011C**

## INDEX

**PURY-P200YJM-A(-BS)**

**PURY-P250YJM-A(-BS)**

**PURY-P300YJM-A(-BS)**

**PURY-P350YJM-A(-BS)**

**PURY-P400YJM-A(-BS)**

**PURY-P450YJM-A(-BS)**

**PURY-EP200YJM-A(-BS)**

**PURY-EP250YJM-A(-BS)**

**PURY-EP300YJM-A(-BS)**

**PURY-EP350YJM-A(-BS)**

Refer to the next page for the package names.

Part information update day : **2013/11/12**

Please change the old catalog (issued July 2013, No.BWE1011B) to this new catalog.  
Content of revision : Some of parts are changed.

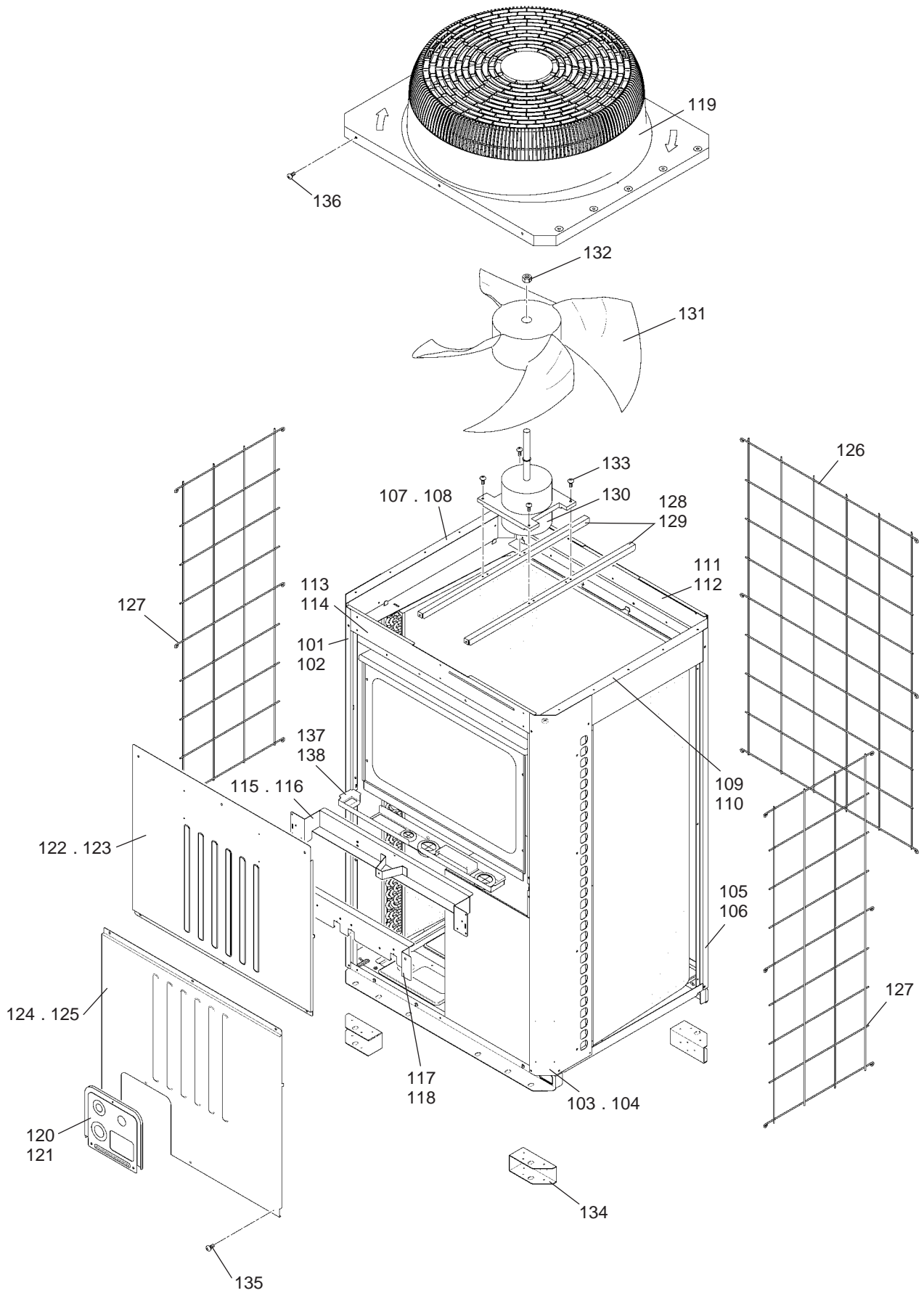


## The Package name list

<b>PURY-P400YSJM-A1(-BS)</b>	[PURY-P200YJM-A(-BS)+PURY-P200YJM-A(-BS)]
<b>PURY-P450YSJM-A1(-BS)</b>	[PURY-P250YJM-A(-BS)+PURY-P200YJM-A(-BS)]
<b>PURY-P500YSJM-A(-BS)</b>	[PURY-P250YJM-A(-BS)+PURY-P250YJM-A(-BS)]
<b>PURY-P500YSJM-A1(-BS)</b>	[PURY-P300YJM-A(-BS)+PURY-P200YJM-A(-BS)]
<b>PURY-P550YSJM-A(-BS)</b>	[PURY-P300YJM-A(-BS)+PURY-P250YJM-A(-BS)]
<b>PURY-P600YSJM-A(-BS)</b>	[PURY-P300YJM-A(-BS)+PURY-P300YJM-A(-BS)]
<b>PURY-P600YSJM-A1(-BS)</b>	[PURY-P350YJM-A(-BS)+PURY-P250YJM-A(-BS)]
<b>PURY-P650YSJM-A(-BS)</b>	[PURY-P350YJM-A(-BS)+PURY-P300YJM-A(-BS)]
<b>PURY-P700YSJM-A(-BS)</b>	[PURY-P400YJM-A(-BS)+PURY-P300YJM-A(-BS)]
<b>PURY-P700YSJM-A1(-BS)</b>	[PURY-P350YJM-A(-BS)+PURY-P350YJM-A(-BS)]
<b>PURY-P750YSJM-A(-BS)</b>	[PURY-P400YJM-A(-BS)+PURY-P350YJM-A(-BS)]
<b>PURY-P800YSJM-A(-BS)</b>	[PURY-P400YJM-A(-BS)+PURY-P400YJM-A(-BS)]
<b>PURY-P800YSJM-A1(-BS)</b>	[PURY-P450YJM-A(-BS)+PURY-P350YJM-A(-BS)]
<b>PURY-P850YSJM-A(-BS)</b>	[PURY-P450YJM-A(-BS)+PURY-P400YJM-A(-BS)]
<b>PURY-P900YSJM-A(-BS)</b>	[PURY-P450YJM-A(-BS)+PURY-P450YJM-A(-BS)]
<b>PURY-EP400YSJM-A(-BS)</b>	[PURY-EP200YJM-A(-BS)+PURY-EP200YJM-A(-BS)]
<b>PURY-EP450YSJM-A(-BS)</b>	[PURY-EP250YJM-A(-BS)+PURY-EP200YJM-A(-BS)]
<b>PURY-EP500YSJM-A(-BS)</b>	[PURY-EP300YJM-A(-BS)+PURY-EP200YJM-A(-BS)]
<b>PURY-EP500YSJM-A1(-BS)</b>	[PURY-EP250YJM-A(-BS)+PURY-EP250YJM-A(-BS)]
<b>PURY-EP550YSJM-A(-BS)</b>	[PURY-EP300YJM-A(-BS)+PURY-EP250YJM-A(-BS)]
<b>PURY-EP600YSJM-A(-BS)</b>	[PURY-EP300YJM-A(-BS)+PURY-EP300YJM-A(-BS)]
<b>PURY-EP600YSJM-A1(-BS)</b>	[PURY-EP350YJM-A(-BS)+PURY-EP250YJM-A(-BS)]
<b>PURY-EP650YSJM-A(-BS)</b>	[PURY-EP350YJM-A(-BS)+PURY-EP300YJM-A(-BS)]
<b>PURY-EP700YSJM-A(-BS)</b>	[PURY-EP350YJM-A(-BS)+PURY-EP350YJM-A(-BS)]

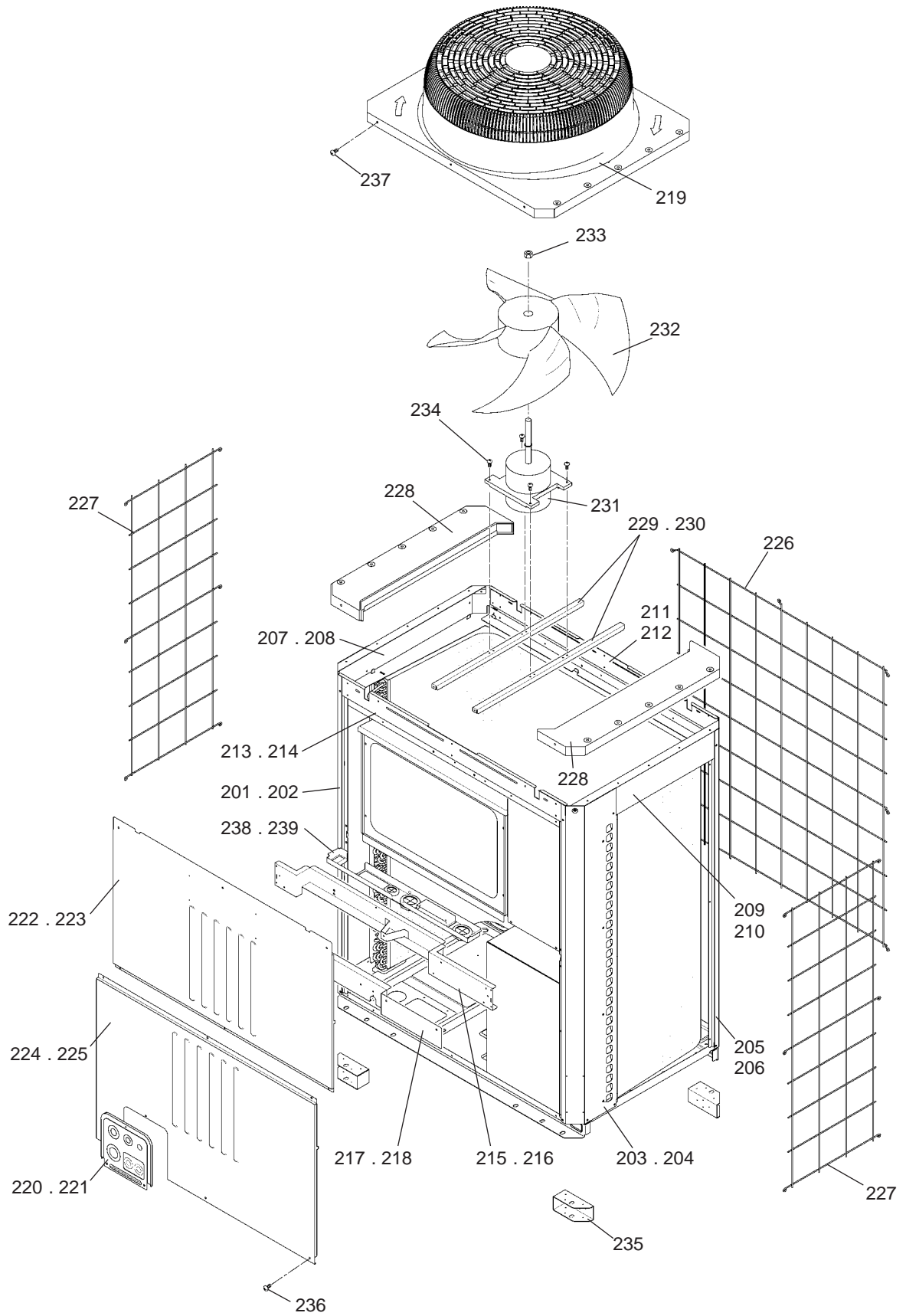
PURY-P200,P250,P300YJM-A(-BS)  
PURY-EP200YJM-A(-BS)

EXTERNAL PARTS & BLOWER PARTS (1)





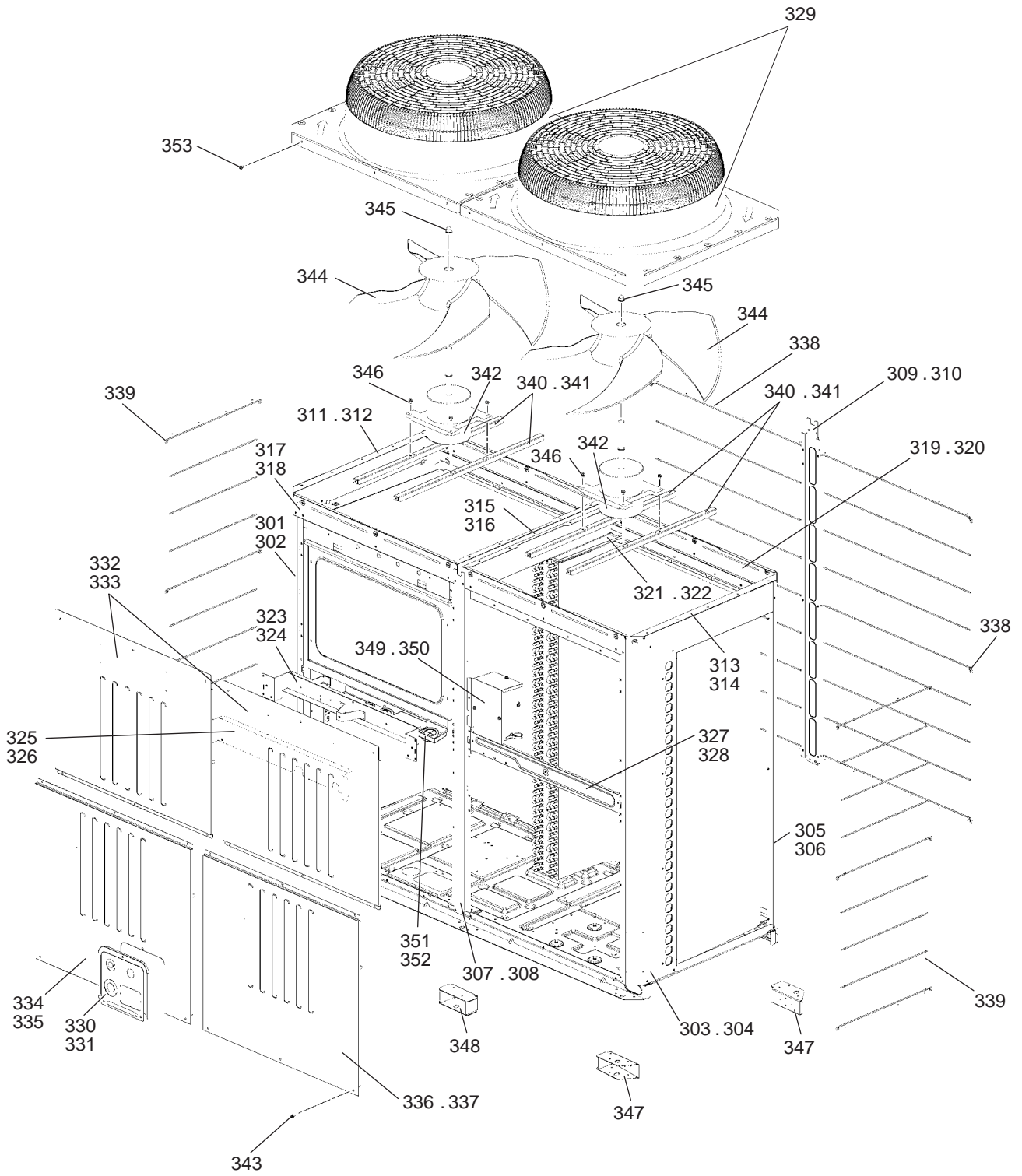










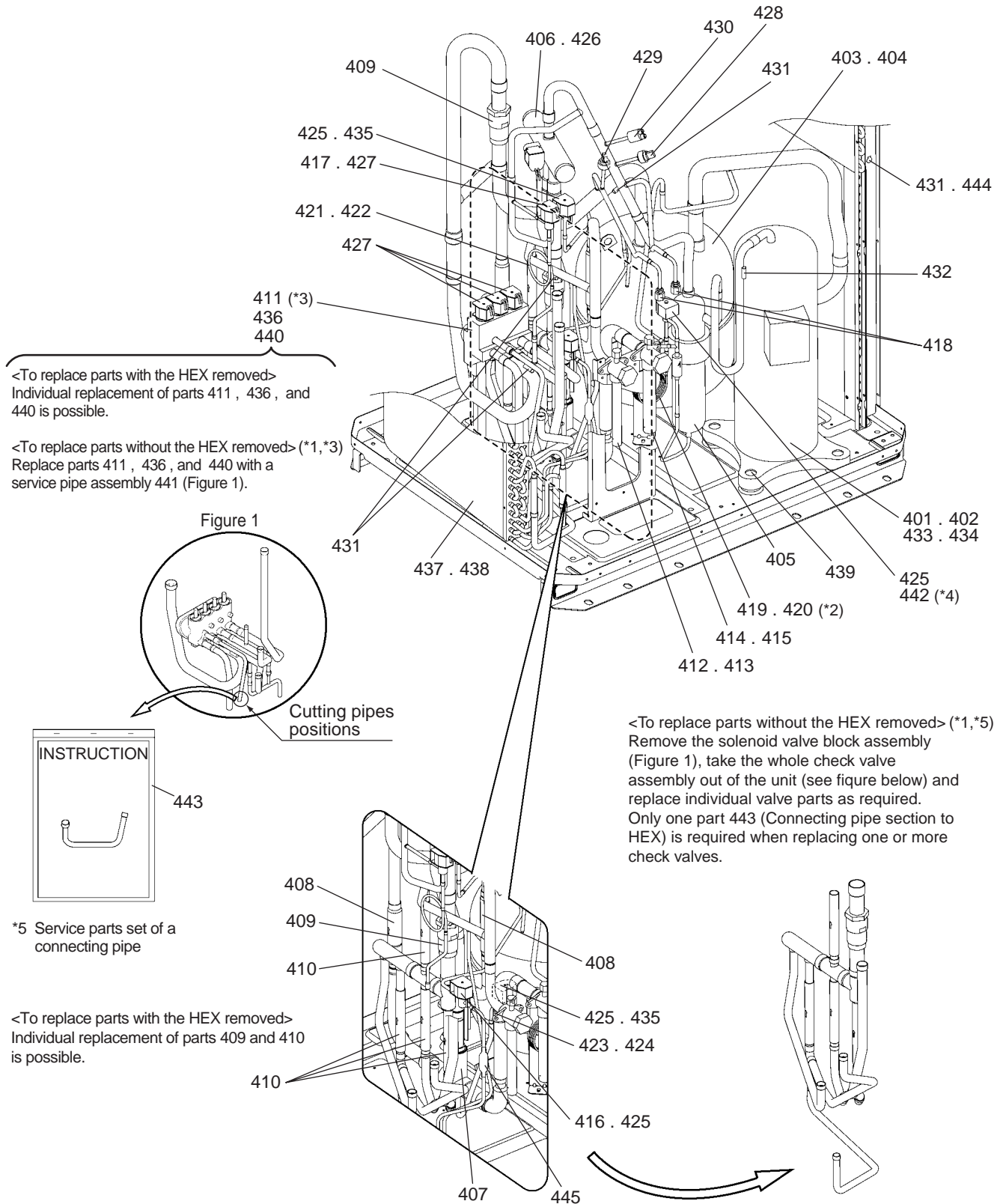


PURY-P450YJM-A(-BS)  
PURY-EP350YJM-A(-BS)

EXTERNAL PARTS & BLOWER PARTS (3)

No.	Part No.	G : RoHS Apply Only W : RoHS Apply by Running Change		Spec.	PURY-P450YJM-A	PURY-P460YJM-A-BS	PURY-EP350YJM-A	PURY-EP300YJM-A-BS	Dwg. No.	Notes for the models	Revision info.
			Part Name								
301	R61 009 626	G	Pillar LF	XL	1	1			KB02A011G09		
302	R61 010 626	G	Pillar LF	XL BS		1	1		KB02A011G10		
303	R11 014 626	G	Pillar RF		1	1			KB02A012G07		
304	R11 015 626	G	Pillar RF	BS		1	1		KB02A012G08		
305	R63 002 627	G	Pillar B		2	2			KB02A013G07		
306	R63 003 627	G	Pillar B	BS		2	2		KB02A013G08		
307	R61 015 626	G	Pillar assy MF		1	1			KD00C356G05		
308	R61 016 626	G	Pillar assy MF	BS		1	1		KD00C356G06		
309	R61 011 626	G	Pillar MB		1	1			KB02A263G01		
310	R61 012 626	G	Pillar MB	BS		1	1		KB02A263G02		
311	R63 038 162	G	Frame assy L		1	1			KD00G100G01		
312	R63 040 162	G	Frame assy L	BS		1	1		KD00G100G02		
313	R63 039 162	G	Frame assy R		1	1			KD00G101G01		
314	R63 041 162	G	Frame assy R	BS		1	1		KD00G101G02		
315	R61 054 162	G	Frame M		1	1			KD00G287G01		
316	R61 055 162	G	Frame M	BS		1	1		KD00G287G02		
317	R61 048 162	G	Frame F	XL	1	1			KB02A264H01		
318	R61 049 162	G	Frame FB	XL BS		1	1		KB02A264G03		
319	R61 042 162	G	Frame assy B	XL	1	1			KD00C265G01		
320	R61 043 162	G	Frame assy B	XL BS		1	1		KD00C265G04		
321	R61 003 499	G	Plate HEX assy	XL	1	1			KB00T714G01		
322	R61 004 499	G	Plate HEX assy	XL BS		1	1		KB00T714G02		
323	R63 013 111	G	Frame assy MU		1	1			KB00C887G01		
324	R63 014 162	G	Frame assy MU	BS		1	1		KB00C887G07		
325	R63 016 111	G	Frame assy MB		1	1			KB00L774G01		
326	R63 015 162	G	Frame assy MB	BS		1	1		KB00L774G07		
327	R61 050 162	G	Frame MR	XL	1	1			KB02J307H01		
328	R61 051 162	G	Frame MR	XL BS		1	1		KB02J307G01		
329	R61 004 118	G	Fan guard		2	2	2	2	KB25A241H03		
330	R61 088 690	G	Piping cover	R2	1	1			KB02L001G05		
331	R61 089 690	G	Piping cover	R2 BS		1	1		KB02L001G06		
332	R61 050 651	G	Panel FU		2	2			KB02B379H02		
333	R63 4H8 651	G	Panel FU	BS		2	2		KB02B379G04		
334	R61 157 651	G	Panel FBL	XL	1	1			KB02J308H02		
335	R61 158 651	G	Panel FBL	XL BS		1	1		KB02J308G04		
336	R63 159 651	G	Panel FBR	XL	1	1			KB02J309H03		
337	R61 160 651	G	Panel FBR	XL BS		1	1		KB02J309G04		
338	R63 004 611	G	Fin guard B		2	2	2	2	KB07T208G01		
339	R61 007 611	G	Fin guard LR		2	2	2	2	KB07C043G03		
340	R63 4H6 140	G	Base fan		4	4			KB02D050H01		
341	R63 4H7 140	G	Base fan	BS		4	4		KB02D050G03		
342	R61 128 220	G	Motor	EEOK-IOTV 920W	2	2	2	2	P780194X01		
343	R63 007 087	G	H Screw	5 x 10 KNURLED (30pcs)	6	6	6	6	KB00H418G14		
344	R63 4H6 300	G	Fan		2	2	2	2	KB25A009H03		
345	R63 4H6 122	G	Box nut	M12 CH	2	2	2	2	P552000X01		





\*1: Refer to the replacement instructions provided with parts 441 and 443 for details.  
 \*2: A capillary tube assy CP1 and a sheet of replacement instructions are included with Capillary tube assy service parts kits (No. 419, 420).  
 \*3: A solenoid valve block assy, a connecting pipe, and a sheet of replacement instructions are included with Solenoid valve block service parts kit (No. 441).  
 \*4: A solenoid valve (SV1a) and a sheet of replacement instructions are included with Solenoid valve service parts kit (No. 442).  
 \*5: Part 443 is the connecting pipe with the sheet of replacement instructions.  
 \*6: Use a strainer (No. 445) for units manufactured after Aug. 2013.

PURY-P200,P250,P300YJM-A(-BS)  
PURY-EP200YJM-A(-BS)

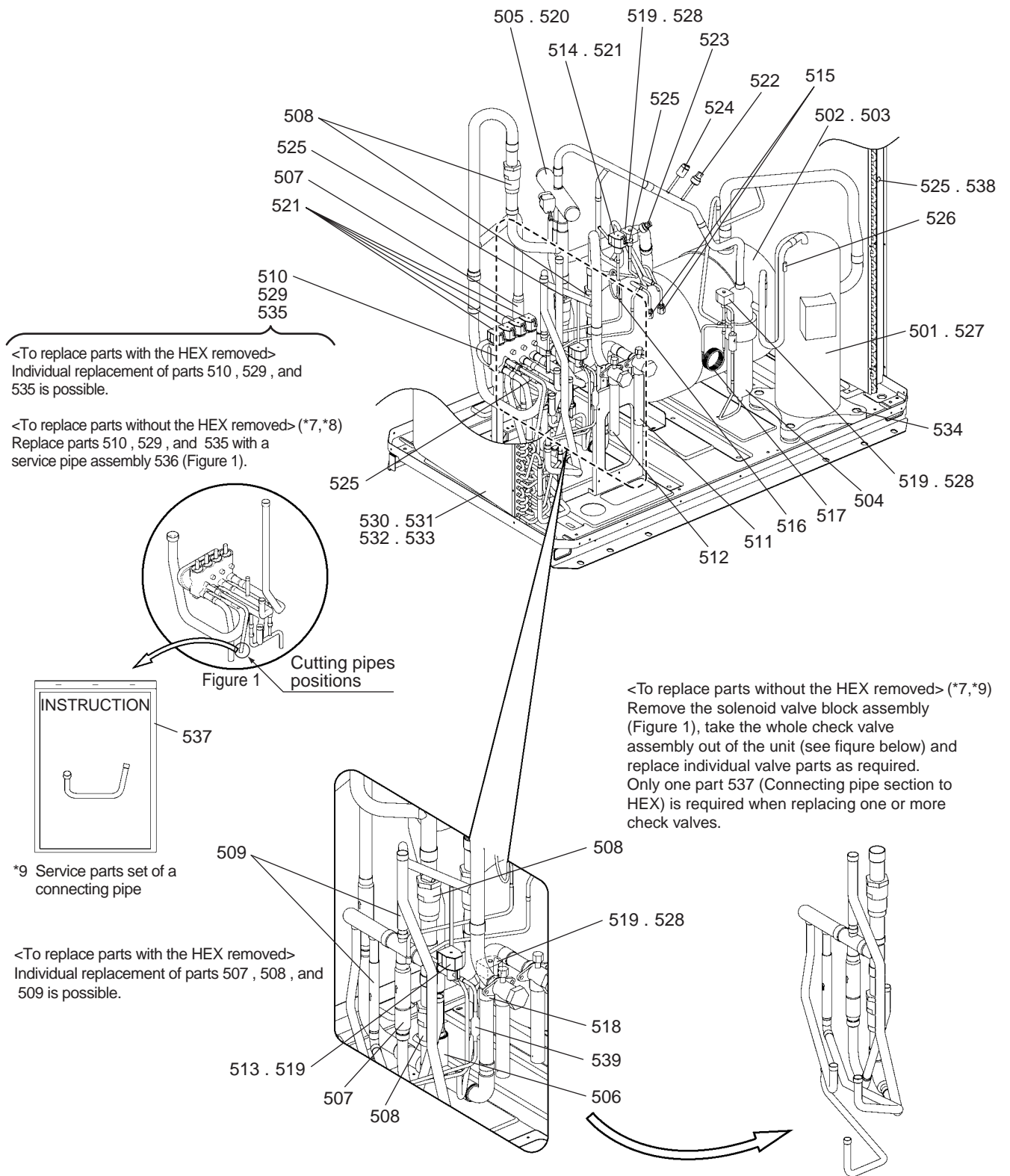
FUNCTIONAL PARTS (1)

No.	Part No.	G : RoHS Apply Only W : RoHS Apply by Running Change	Part Name	Spec.	PURY-P200YJM-A	PURY-P200YJM-A-BS	PURY-P250YJM-A	PURY-P250YJM-A-BS	PURY-P300YJM-A	PURY-P300YJM-A-BS	Dwg. No.	Notes for the models	Revision info.
401	R69 068 478	G	Scroll compressor	ENB52FC-YE	1	1	1	1			EP10107B08		
402	R69 070 478	G	Scroll compressor	HNB78FC-YE					1	1	EP10109B08		
403	R61 079 484	G	Accumulator assy		1		1		1		KB54B375G13		
404	R61 080 484	G	Accumulator assy	BS		1		1		1	KB54B375G14		
405	R61 007 487	G	Oil separator assy		1	1	1	1	1	1	KB00L071G01		
406	R63 Y05 154	G	Four way valve	STF-07	1	1	1	1	1	1	P633119X01	<21S4a>	
407	R61 013 418	G	Check valve block assy		1	1	1	1	1	1	P633132X01	<CV2a>	
408	R61 003 418	G	Check valve	LCVP15-7M	2	2	2	2	2	2	P639180X01	<CV3a, CV5a>	
409	R61 002 418	G	Check valve	YBV22	2	2	2	2	2	2	P639183X01	<CV4a, CV7a>	
410	R63 R43 418	G	Check valve	BCV-1005	4	4	4	4	4	4	P639165X01	<CV6a, CV8a, CV9a, CV10a>	
411	R61 026 232	G	Valve block assy	3SV	1	1	1	1	1	1	KB00L055G02	<SV4a, SV4b, SV4d>	
412	R61 005 540	G	Valve	VSAMH5SSCM-LA1	1	1					P636344X01	<(HP)BV2>	
413	R61 006 538	G	Valve	VSAMH6SSCM-LA1			1	1	1	1	P636352X01	<(HP)BV2>	
414	R61 001 540	G	Valve	VSAMH7SSCM-A	1	1					P636342X01	<(LP)BV1>	
415	R61 002 540	G	Valve	VSAMH8SSCM-A			1	1	1	1	P636343X01	<(LP)BV1>	
416	R63 027 232	G	Solenoid valve	VPV-L	1	1	1	1	1	1	P631296X01	<SV5b>	
417	R63 Y07 232	G	Solenoid valve	ATS-A	1	1	1	1	1	1	P631291X01	<SV9>	
418	R63 R34 413	G	Check joint L	R410A	2	2	2	2	2	2	P666004X02	<(HP)CJ1, (LP)CJ2>	
419	R61 009 425	G	Capillary tube assy	(service parts kit)	1	1	1	1			KB00H902G20	<CP1>*2	
420	R61 010 425	G	Capillary tube assy	(service parts kit)					1	1	KB00H902G18	<CP1>*2	
421	R61 006 425	G	Capillary tube assy		1	1	1	1			KB49H698G01	<CP2>	
422	R61 008 425	G	Capillary tube assy						1	1	KB49H700G01	<CP2>	
423	R63 4H6 454	G	Strainer	19.05D	1	1					KD48G400G01	<ST1>	
424	R61 008 454	G	Strainer	25.4D			1	1	1	1	KB48K250G01	<ST1>	
425	R61 006 243	G	Solenoid coil	VPV Y	4	4	4	4	4	4	P472046X01	<SV1a, SV2, SV5b, SV5c>	
426	R63 Y16 243	G	Solenoid coil	STF DV	1	1	1	1	1	1	P472024X01	<21S4a>	
427	R63 Y18 243	G	Solenoid coil		4	4	4	4	4	4	P472012X01	<SV4a, SV4b, SV4d, SV9>	
428	R61 006 288	G	Pressure sensor	HP D173	1	1	1	1	1	1	KB00H904G09	<(HP)63HS1>	
429	R61 007 288	G	Pressure sensor	LP D173	1	1	1	1	1	1	KB00H904G10	<(LP)63LS>	
430	R63 Y11 208	G	Pressure switch	ACB1UB28W	1	1	1	1	1	1	P426320X01	<63H1>	
431	R61 060 200	G	Thermistor		4	4	4	4	4	4	P418065X01	<TH3, TH5, TH6, TH7>	
432	R63 911 202	G	Thermistor		1	1	1	1	1	1	P425416X02	<TH4>	
433	R61 003 237	G	Belt heater	240V 35W	1	1	1	1			P497067X01	<CH11>	
434	R63 Y07 237	G	Belt heater	240V 45W					1	1	P493781X02	<CH11>	
435	R63 P90 232	G	Solenoid valve	VPV-152D	2	2	2	2	2	2	P631277X01	<SV2, SV5c>	
436	R63 6A7 235	G	Solenoid valve	ACS METAL D32	3	3	3	3	3	3	P631310X01	<SV4a, SV4b, SV4d>	
437	R61 458 480	G	Heat exchanger assy	2.5L	1		1		1		KD01G258G01		
438	R61 461 480	G	Heat exchanger assy	2.5L BS		1		1		1	KD01G258G02		
439	R63 852 860	G	Rubber mount	For compressor	4	4	4	4	4	4	W897574H01		
440	R63 6A7 245	G	SV tightening element		1	1	1	1	1	1	W909209G01		
441	R61 032 232	G	SV block service parts kit		1	1	1	1	1	1	KB00H902G23	<SV4a, SV4b, SV4d>*3	
442	R61 033 232	G	SV service parts kit		1	1	1	1	1	1	KB00H902G19	<SV1a>*4	
443	R61 004 151	G	Connecting pipe ( 9.52)	(with instructions) *5	1	1	1	1	1	1	KB00H902G25	<CV4a, CV6a, CV8a, CV9a, CV10a>*5	
444	R61 001 310	G	Sensor holder		1	1	1	1	1	1	KB25B471H03		
445	R63 155 454	G	Strainer	6.35D	1	1	1	1	1	1	W882822G01	*6	Add

PURY-P200,P250,P300YJM-A(-BS)  
PURY-EP200YJM-A(-BS)

FUNCTIONAL PARTS (1)

No.	Part No.	G : RoHS Apply Only W : RoHS Apply by Running Change		Spec.	PURY-EP200YJM-A	PURY-EP200YJM-A-BS				Dwg. No.	Notes for the models	Revision info.
			Part Name									
401	R69 068 478	G	Scroll compressor	ENB52FC-YE	1	1				EP10107B08		
402	R69 070 478	G	Scroll compressor	HNB78FC-YE						EP10109B08		
403	R61 079 484	G	Accumulator assy		1					KB54B375G13		
404	R61 080 484	G	Accumulator assy	BS		1				KB54B375G14		
405	R61 007 487	G	Oil separator assy		1	1				KB00L071G01		
406	R63 Y05 154	G	Four way valve	STF-07	1	1				P633119X01	<21S4a>	
407	R61 013 418	G	Check valve block assy		1	1				P633132X01	<CV2a>	
408	R61 003 418	G	Check valve	LCVP15-7M	2	2				P639180X01	<CV3a, CV5a>	
409	R61 002 418	G	Check valve	YBV22	2	2				P639183X01	<CV4a, CV7a>	
410	R63 R43 418	G	Check valve	BCV-1005	4	4				P639165X01	<CV6a, CV8a, CV9a, CV10a>	
411	R61 026 232	G	Valve block assy	3SV	1	1				KB00L055G02	<SV4a, SV4b, SV4d>	
412	R61 005 540	G	Valve	VSAMH5SSCM-LA1	1	1				P636344X01	<(HP)BV2>	
413	R61 006 538	G	Valve	VSAMH6SSCM-LA1						P636352X01	<(HP)BV2>	
414	R61 001 540	G	Valve	VSAMH7SSCM-A	1	1				P636342X01	<(LP)BV1>	
415	R61 002 540	G	Valve	VSAMH8SSCM-A						P636343X01	<(LP)BV1>	
416	R63 027 232	G	Solenoid valve	VPV-L	1	1				P631296X01	<SV5b>	
417	R63 Y07 232	G	Solenoid valve	ATS-A	1	1				P631291X01	<SV9>	
418	R63 R34 413	G	Check joint L	R410A	2	2				P666004X02	<(HP)CJ1, (LP)CJ2>	
419	R61 009 425	G	Capillary tube assy	(service parts kit)	1	1				KB00H902G20	<CP1>*2	
420	R61 010 425	G	Capillary tube assy	(service parts kit)						KB00H902G18	<CP1>*2	
421	R61 006 425	G	Capillary tube assy		1	1				KB49H698G01	<CP2>	
422	R61 008 425	G	Capillary tube assy							KB49H700G01	<CP2>	
423	R63 4H6 454	G	Strainer	19.05D	1	1				KD48G400G01	<ST1>	
424	R61 008 454	G	Strainer	25.4D						KB48K250G01	<ST1>	
425	R61 006 243	G	Solenoid coil	VPV Y	4	4				P472046X01	<SV1a, SV2, SV5b, SV5c>	
426	R63 Y16 243	G	Solenoid coil	STF DV	1	1				P472024X01	<21S4a>	
427	R63 Y18 243	G	Solenoid coil		4	4				P472012X01	<SV4a, SV4b, SV4d, SV9>	
428	R61 006 288	G	Pressure sensor	HP D173	1	1				KB00H904G09	<(HP)63HS1>	
429	R61 007 288	G	Pressure sensor	LP D173	1	1				KB00H904G10	<(LP)63LS>	
430	R63 Y11 208	G	Pressure switch	ACB1UB28W	1	1				P426320X01	<63H1>	
431	R61 060 200	G	Thermistor		4	4				P418065X01	<TH3, TH5, TH6, TH7>	
432	R63 911 202	G	Thermistor		1	1				P425416X02	<TH4>	
433	R61 003 237	G	Belt heater	240V 35W	1	1				P497067X01	<CH11>	
434	R63 Y07 237	G	Belt heater	240V 45W						P493781X02	<CH11>	
435	R63 P90 232	G	Solenoid valve	VPV-152D	2	2				P631277X01	<SV2, SV5c>	
436	R63 6A7 235	G	Solenoid valve	ACS METAL D32	3	3				P631310X01	<SV4a, SV4b, SV4d>	
437	R61 458 480	G	Heat exchanger assy	2.5L	1					KD01G258G01		
438	R61 461 480	G	Heat exchanger assy	2.5L BS		1				KD01G258G02		
439	R63 852 860	G	Rubber mount	For compressor	4	4				W897574H01		
440	R63 6A7 245	G	SV tightening element		1	1				W909209G01		
441	R61 032 232	G	SV block service parts kit		1	1				KB00H902G23	<SV4a, SV4b, SV4d>*3	
442	R61 033 232	G	SV service parts kit		1	1				KB00H902G19	<SV1a>*4	
443	R61 004 151	G	Connecting pipe ( 9.52)	(with instructions) *5	1	1				KB00H902G25	<CV4a, CV6a, CV8a, CV9a, CV10a>*5	
444	R61 001 310	G	Sensor holder		1	1				KB25B471H03		
445	R63 155 454	G	Strainer	6.35D	1	1				W882822G01	*6	Add



<To replace parts with the HEX removed>  
 Individual replacement of parts 510 , 529 , and 535 is possible.

<To replace parts without the HEX removed> (\*7,\*8)  
 Replace parts 510 , 529 , and 535 with a service pipe assembly 536 (Figure 1).

<To replace parts without the HEX removed> (\*7,\*9)  
 Remove the solenoid valve block assembly (Figure 1), take the whole check valve assembly out of the unit (see figure below) and replace individual valve parts as required. Only one part 537 (Connecting pipe section to HEX) is required when replacing one or more check valves.

\*9 Service parts set of a connecting pipe

<To replace parts with the HEX removed>  
 Individual replacement of parts 507 , 508 , and 509 is possible.

\*7: Refer to the replacement instructions provided with parts 536 and 537 for details.  
 \*8: A solenoid valve block assy, a connecting pipe, and a sheet of replacement instructions are included with Solenoid valve block service parts kit (No. 536).  
 \*9: Part 537 is the connecting pipe with the sheet of replacement instructions.  
 \*10: Use a strainer (No. 539) for units manufactured after Aug. 2013.





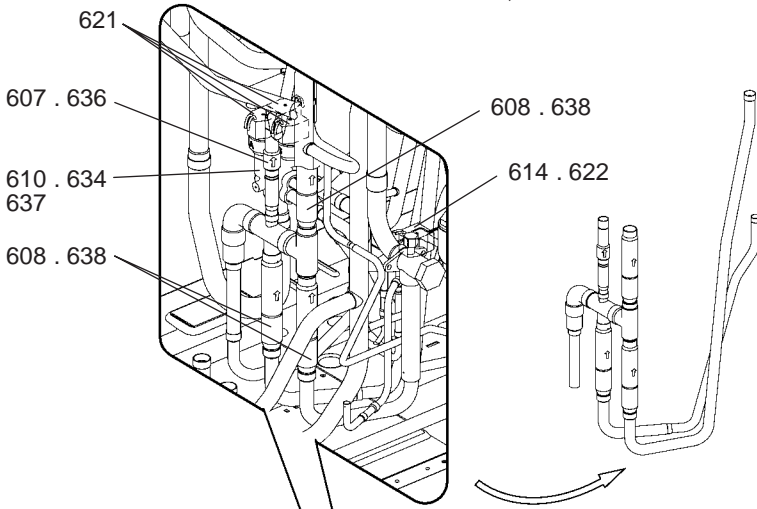


**PURY-P450YJM-A(-BS)  
PURY-EP350YJM-A(-BS)**

**FUNCTIONAL PARTS (3)**

<To replace parts with the HEX removed>  
Individual replacement of parts 607 and 608 is possible.

<To replace parts without the HEX removed> (\*11,\*13)  
Remove the solenoid valve block assembly (Figure 1), take the check valve assembly (see figure below) out of the unit, and replace parts 636, 638.



<To replace parts with the HEX removed>  
Individual replacement of parts 610, 634, and 637 is possible.

<To replace parts without the HEX removed> (\*11,\*12)  
Replace parts 610, 634, and 637 with a service pipe assembly 635 (Figure 1).

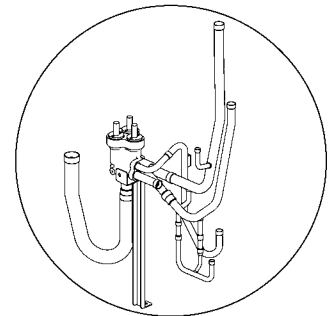
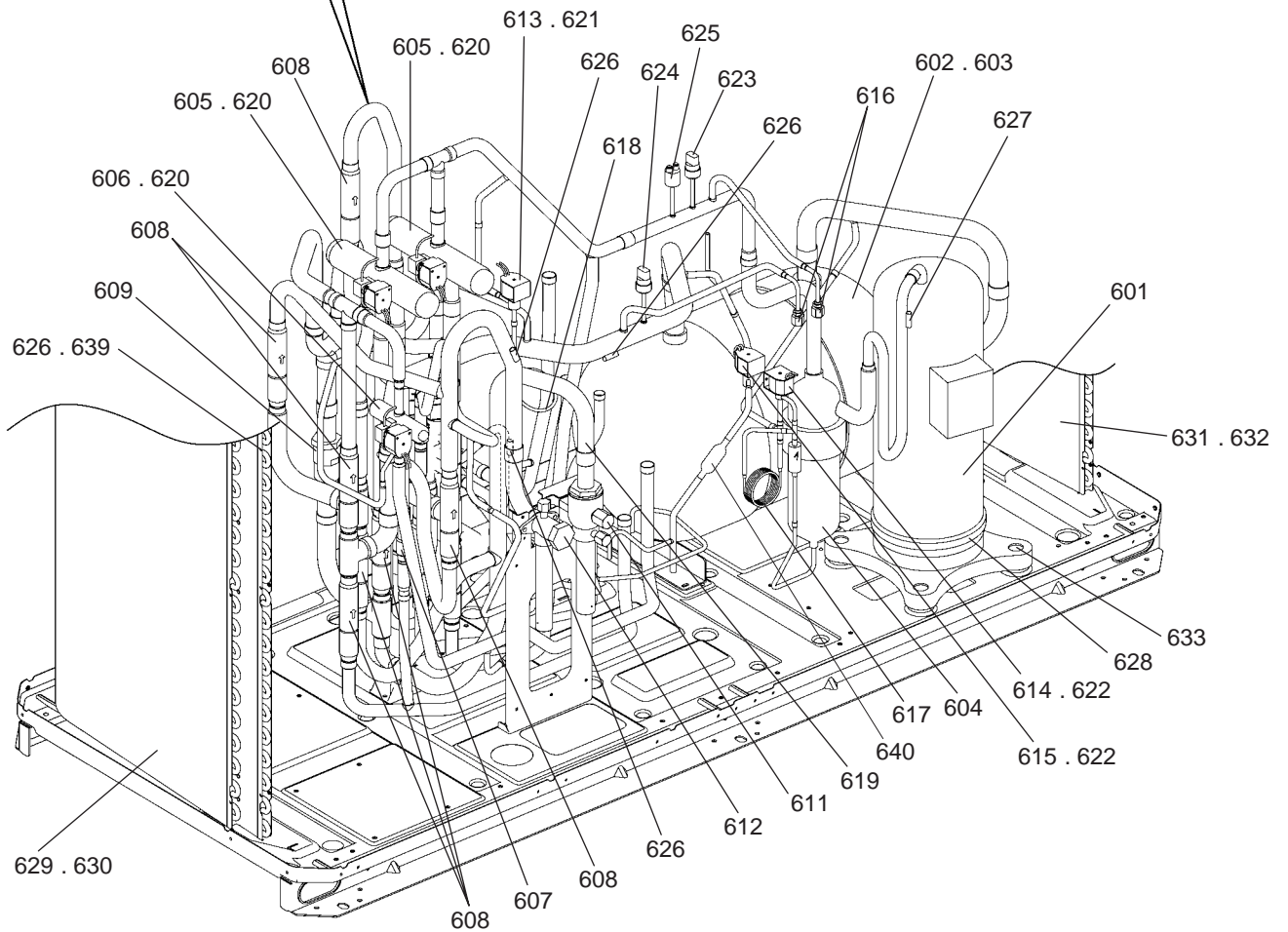


Figure 1



\*11: Refer to the replacement instructions provided with parts 635, 636 and 638 for details.  
\*12: A solenoid valve block assy and a sheet of replacement instructions are included with Solenoid valve block service parts kit (No. 635).  
\*13: A check valve and a sheet of replacement instructions are included with Service parts with instructions (No. 636, 638).  
\*14: Use a strainer (No. 640) for units manufactured after Aug. 2013.



PURY-P200,P250,P300YJM-A(-BS)  
PURY-P350,P400,P450YJM-A(-BS)  
PURY-EP200,EP250,EP300,EP350YJM-A(-BS)

CONTROL BOX PARTS

