

SERVICE PARTS LIST FOR MITSUBISHI ELECTRIC PACKAGED AIR-CONDITIONERS

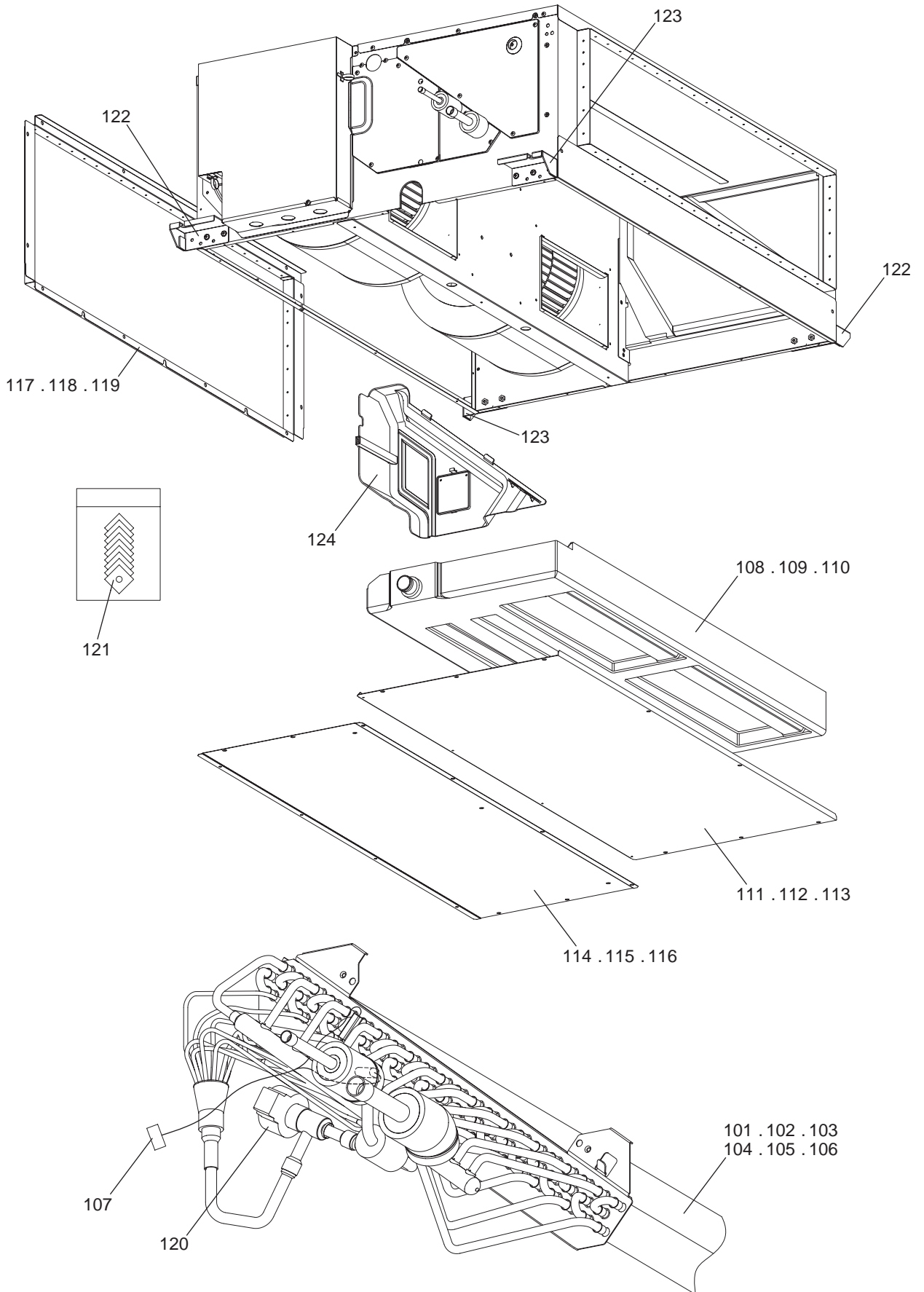
Series : PEFY-P•VMHS-E.TH
PEFY-P•VMHS-E.TH-D

Oct. 2017
BWE017170

INDEX

PEFY-P40VMHS-E.TH
PEFY-P50VMHS-E.TH
PEFY-P63VMHS-E.TH
PEFY-P71VMHS-E.TH
PEFY-P80VMHS-E.TH
PEFY-P100VMHS-E.TH
PEFY-P125VMHS-E.TH
PEFY-P140VMHS-E.TH
PEFY-P40VMHS-E.TH-D
PEFY-P50VMHS-E.TH-D
PEFY-P63VMHS-E.TH-D
PEFY-P71VMHS-E.TH-D
PEFY-P80VMHS-E.TH-D
PEFY-P100VMHS-E.TH-D
PEFY-P125VMHS-E.TH-D
PEFY-P140VMHS-E.TH-D

EXTERNAL PARTS



EXTERNAL PARTS

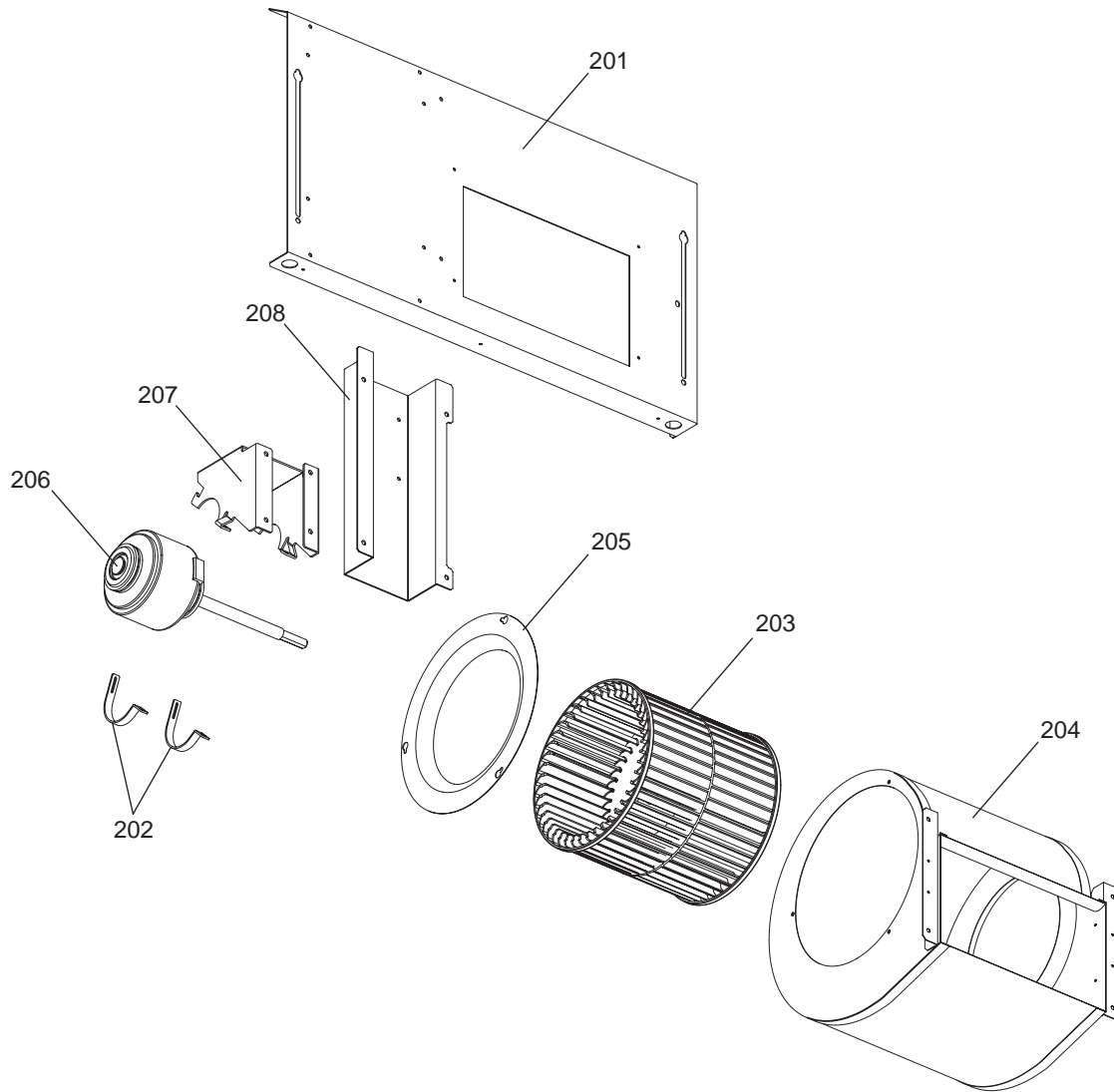
No.	Part No.	G : RoHS Apply Only W : RoHS Apply by Running Change	Part Name	Spec.							Dwg. No.	Notes for the models	Revision info.
101	E17 K60 620	G	HEAT EXCHANGER		1	1					VQ00B152B01		
102	E17 K62 620	G	HEAT EXCHANGER					1			VQ00B152B02		
103	E17 K63 620	G	HEAT EXCHANGER						1	1	VQ00B153B01		
104	E17 K65 620	G	HEAT EXCHANGER							1	VQ00B154B01		
105	E17 K66 620	G	HEAT EXCHANGER								VQ00B154B02		
106	E17 K67 620	G	HEAT EXCHANGER								VQ00B155B01		
107	E17 319 307	G	THERMISTOR		1	1	1	1	1	1	RG71V202G01		
108	E17 C61 700	G	DRAIN PAN ASSY	63	1	1	1				KJ00L910G04		
109	E17 C64 700	G	DRAIN PAN ASSY	80				1	1		KJ00L910G05		
110	E17 C66 700	G	DRAIN PAN ASSY	140						1	KJ00L910G06		
111	E17 K60 810	G	PLATE ASSY UD1	63	1	1	1				KJ00L912G13		
112	E17 K63 810	G	PLATE ASSY UD1	80				1	1		KJ00L912G14		
113	E17 K65 810	G	PLATE ASSY UD1	140						1	KJ00L912G15		
114	E17 K60 811	G	PLATE ASSY UD2	63	1	1	1				VR00C300G04		
115	E17 K63 811	G	PLATE ASSY UD2	80				1	1		VR00C300G05		
116	E17 K65 811	G	PLATE ASSY UD2	140						1	VR00C300G06		
117	E17 K60 709	G	FLANGE ASSY	63	1	1	1				KJ00L920G07		
118	E17 K63 709	G	FLANGE ASSY	80				1	1		KJ00L920G08		
119	E17 K65 709	G	FLANGE ASSY	140						1	KJ00L920G09		
120	E17 K60 493	G	SOLENOID COIL	PAM3	1	1	1	1	1	1	KR50B227H01		
121	E17 C61 097	G	WASHER ASSY INS		8	8	8	8	8	8	KB00H224G05		
122	E17 C69 810	G	PLATE HANGER WELD 1		2	2	2	2	2	2	KD00S338G01		
123	E17 C70 810	G	PLATE HANGER WELD 2		2	2	2	2	2	2	KD00S340G01		
124	E17 K60 293	G	SEPARATOR ASSY		1	1	1	1	1	1	KD00S176G05		

EXTERNAL PARTS

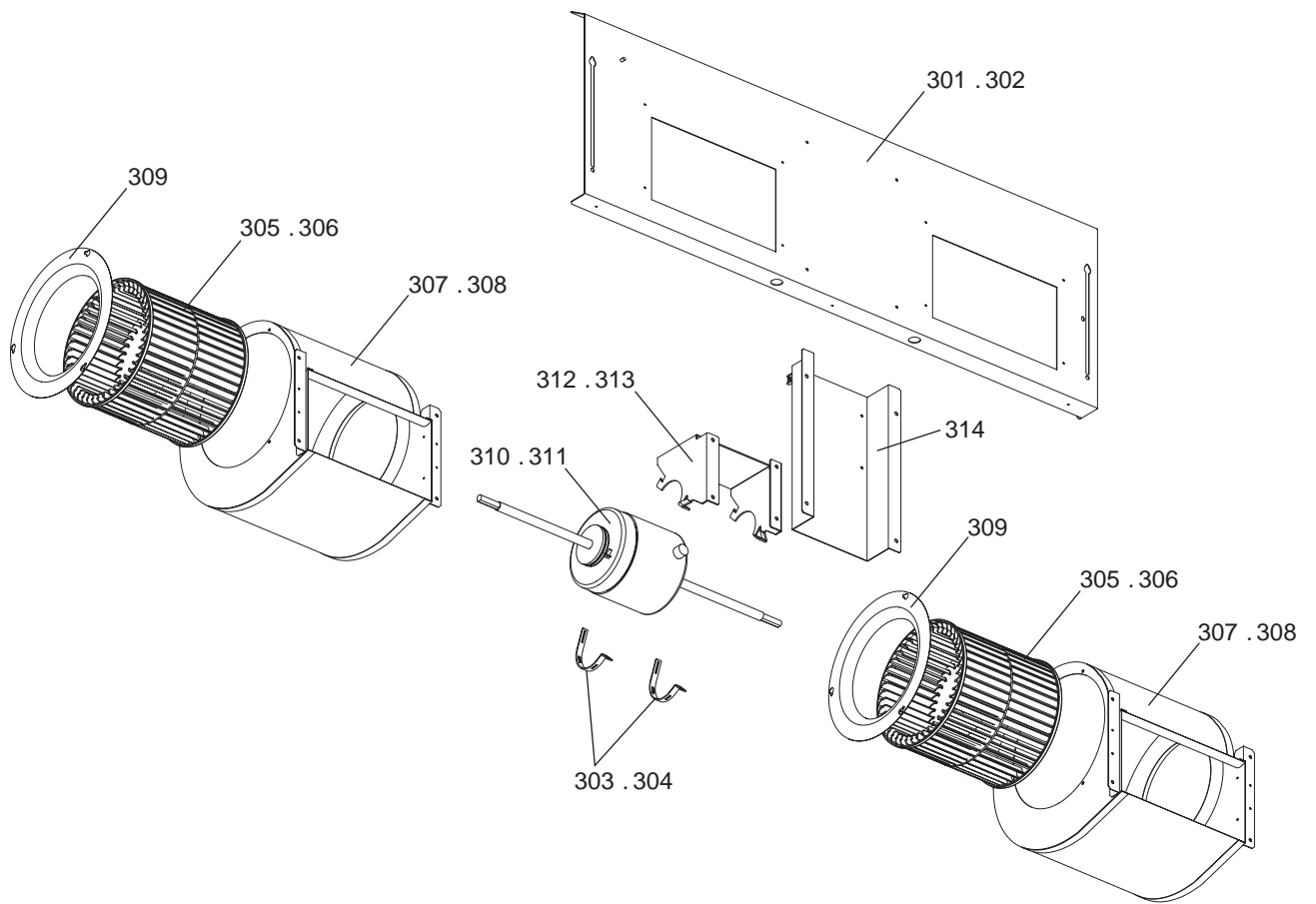
No.	Part No.	G : RoHS Apply Only W : RoHS Apply by Running Change		Spec.	PEFY-P125VMHS-E.TH	PEFY-P140VMHS-E.TH	PEFY-P40VMHS-E.TH-D	PEFY-P63VMHS-E.TH-D	PEFY-P71VMHS-E.TH-D	Dwg. No.	Notes for the models	Revision info.		
		Part Name												
101	E17 K60 620	G	HEAT EXCHANGER				1	1		VQ00B152B01				
102	E17 K62 620	G	HEAT EXCHANGER						1	VQ00B152B02				
103	E17 K63 620	G	HEAT EXCHANGER							1	VQ00B153B01			
104	E17 K65 620	G	HEAT EXCHANGER								VQ00B154B01			
105	E17 K66 620	G	HEAT EXCHANGER		1						VQ00B154B02			
106	E17 K67 620	G	HEAT EXCHANGER			1					VQ00B155B01			
107	E17 319 307	G	THERMISTOR		1	1	1	1	1	1	RG71V202G01			
108	E17 C61 700	G	DRAIN PAN ASSY	63			1	1	1		KJ00L910G04			
109	E17 C64 700	G	DRAIN PAN ASSY	80						1	KJ00L910G05			
110	E17 C66 700	G	DRAIN PAN ASSY	140	1	1					KJ00L910G06			
111	E17 K60 810	G	PLATE ASSY UD1	63			1	1	1		KJ00L912G13			
112	E17 K63 810	G	PLATE ASSY UD1	80							1	KJ00L912G14		
113	E17 K65 810	G	PLATE ASSY UD1	140	1	1						KJ00L912G15		
114	E17 K60 811	G	PLATE ASSY UD2	63			1	1	1		VR00C300G04			
115	E17 K63 811	G	PLATE ASSY UD2	80						1	VR00C300G05			
116	E17 K65 811	G	PLATE ASSY UD2	140	1	1					VR00C300G06			
117	E17 K60 709	G	FLANGE ASSY	63			1	1	1		KJ00L920G07			
118	E17 K63 709	G	FLANGE ASSY	80							1	KJ00L920G08		
119	E17 K65 709	G	FLANGE ASSY	140	1	1						KJ00L920G09		
120	E17 K60 493	G	SOLENOID COIL	PAM3	1	1	1	1	1	1	KR50B227H01			
121	E17 C61 097	G	WASHER ASSY INS		8	8	8	8	8	8	KB00H224G05			
122	E17 C69 810	G	PLATE HANGER WELD 1		2	2	2	2	2	2	KD00S338G01			
123	E17 C70 810	G	PLATE HANGER WELD 2		2	2	2	2	2	2	KD00S340G01			
124	E17 K60 293	G	SEPARATOR ASSY		1	1	1	1	1	1	KD00S176G05			

EXTERNAL PARTS

No.	Part No.	G : RoHS Apply Only W : RoHS Apply by Running Change		Spec.	PEFY-P60VMHS-E.TH-D	PEFY-P100VMHS-E.TH-D	PEFY-P125VMHS-E.TH-D	PEFY-P140VMHS-E.TH-D	Dwg. No.	Notes for the models	Revision info.
		Part Name									
101	E17 K60 620	G	HEAT EXCHANGER						VQ00B152B01		
102	E17 K62 620	G	HEAT EXCHANGER						VQ00B152B02		
103	E17 K63 620	G	HEAT EXCHANGER		1				VQ00B153B01		
104	E17 K65 620	G	HEAT EXCHANGER			1			VQ00B154B01		
105	E17 K66 620	G	HEAT EXCHANGER				1		VQ00B154B02		
106	E17 K67 620	G	HEAT EXCHANGER					1	VQ00B155B01		
107	E17 319 307	G	THERMISTOR		1	1	1	1	RG71V202G01		
108	E17 C61 700	G	DRAIN PAN ASSY	63					KJ00L910G04		
109	E17 C64 700	G	DRAIN PAN ASSY	80	1				KJ00L910G05		
110	E17 C66 700	G	DRAIN PAN ASSY	140		1	1	1	KJ00L910G06		
111	E17 K60 810	G	PLATE ASSY UD1	63					KJ00L912G13		
112	E17 K63 810	G	PLATE ASSY UD1	80	1				KJ00L912G14		
113	E17 K65 810	G	PLATE ASSY UD1	140		1	1	1	KJ00L912G15		
114	E17 K60 811	G	PLATE ASSY UD2	63					VR00C300G04		
115	E17 K63 811	G	PLATE ASSY UD2	80	1				VR00C300G05		
116	E17 K65 811	G	PLATE ASSY UD2	140		1	1	1	VR00C300G06		
117	E17 K60 709	G	FLANGE ASSY	63					KJ00L920G07		
118	E17 K63 709	G	FLANGE ASSY	80	1				KJ00L920G08		
119	E17 K65 709	G	FLANGE ASSY	140		1	1	1	KJ00L920G09		
120	E17 K60 493	G	SOLENOID COIL	PAM3	1	1	1	1	KR50B227H01		
121	E17 C61 097	G	WASHER ASSY INS		8	8	8	8	KB00H224G05		
122	E17 C69 810	G	PLATE HANGER WELD 1		2	2	2	2	KD00S338G01		
123	E17 C70 810	G	PLATE HANGER WELD 2		2	2	2	2	KD00S340G01		
124	E17 K60 293	G	SEPARATOR ASSY		1	1	1	1	KD00S176G05		



No.	Part No.	G : RoHS Apply Only W : RoHS Apply by Running Change		Spec.	PEFY-P40VMHS-E.TH	PEFY-P50VMHS-E.TH	PEFY-P63VMHS-E.TH	PEFY-P40WHS-E.TH-D	PEFY-P50WHS-E.TH-D	PEFY-P63WHS-E.TH-D	Dwg. No.	Notes for the models	Revision info.
		Part Name											
201	E17 K73 810	G	FAN PLATE	63	1	1	1	1	1	1	VR02B081G02		
202	KB02H047G02	G	ATTACHMENT		2	2	2	2	2	2	KB02H047G02		
203	E17 C61 500	G	SIROCCO FAN ASSY		1	1	1	1	1	1	KJ00R045G02		
204	E17 K60 129	G	FAN CASE ASSY		1	1	1	1	1	1	KJ00R246G03		
205	E17 C61 509	G	BELL MOUTH		1	1	1	1	1	1	VR02D006G02		
206	E17 K60 300	G	MOTOR	SIC-70CW-D8121-3	1	1	1	1	1	1	KR61C462H01		
207	E17 K60 334	G	MOTOR LEG S		1	1	1	1	1	1	VR02C296G01		
208	E17 K60 128	G	MOTOR BASE S		1	1	1	1	1	1	VR02C294G01		

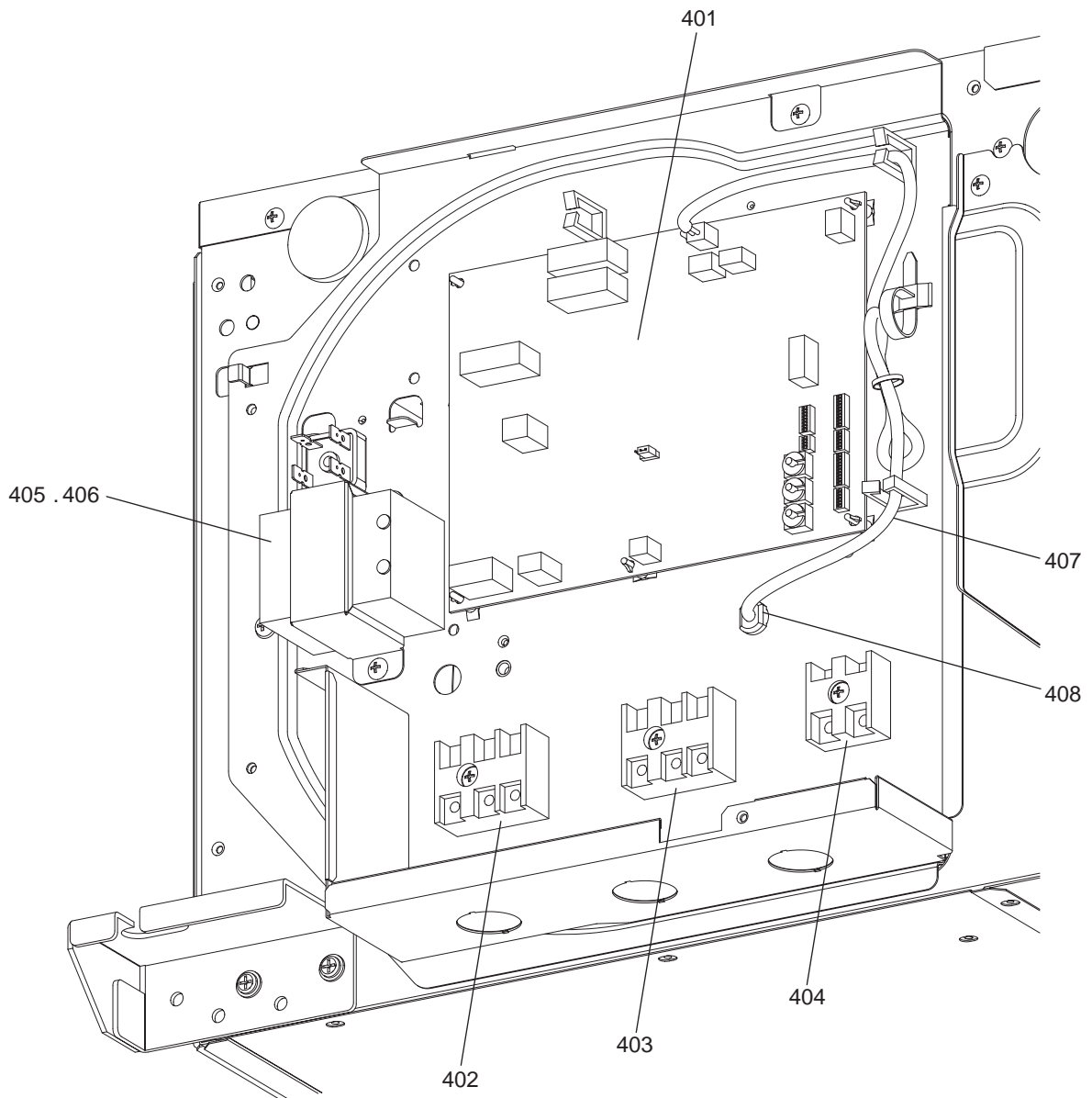


No.	Part No.	G : RoHS Apply Only W : RoHS Apply by Running Change		Spec.	PEFY-P71VMHS-E.TH	PEFY-P80VMHS-E.TH	PEFY-P100VMHS-E.TH	PEFY-P125VMHS-E.TH	PEFY-P140VMHS-E.TH	PEFY-P71VMHS-E.TH-D	Dwg. No.	Notes for the models	Revision info.
			Part Name										
301	E17 K77 810	G	FAN PLATE	80	1	1					1	VR02B082G02	
302	E17 K79 810	G	FAN PLATE	140			1	1	1			VR02A024G02	
303	KB02H047G02	G	ATTACHMENT		2	2					2	KB02H047G02	
304	VR02C299G01	G	ATTACHMENT MOTOR				2	2	2			VR02C299G01	
305	E17 K63 500	G	SIROCCO FAN ASSY		2	2					2	KJ00R045G03	
306	E17 C61 500	G	SIROCCO FAN ASSY				2	2	2			KJ00R045G02	
307	E17 K63 129	G	FAN CASE ASSY		2	2					2	KJ00R247G04	
308	E17 K65 129	G	FAN CASE ASSY				2	2	2			KJ00R246G03	
309	E17 C61 509	G	BELL MOUTH		2	2	2	2	2	2		VR02D006G02	
310	E17 K63 300	G	MOTOR	SIC-101CW-D8244-3	1	1					1	KR61C463H01	
311	E17 K65 300	G	MOTOR	KMUC4E1MW			1	1	1			KR61C478H02	
312	E17 K63 334	G	MOTOR LEG M		1	1					1	VR02C297G02	
313	E17 K65 334	G	MOTOR LEG L				1	1	1			VR02C298G03	
314	E17 K63 128	G	MOTOR BASE L		1	1	1	1	1	1		VR02C295G02	

PEFY-P71,P80,P100,P125,P140VMHS-E.TH BLOWER PARTS (2)
PEFY-P71,P80,P100,P125,P140VMHS-E.TH-D

No.	Part No.	G : RoHS Apply Only W : RoHS Apply by Running Change		Spec.	PEFY-P80VMHS-E.TH-D	PEFY-P100VMHS-E.TH-D	PEFY-P125VMHS-E.TH-D	PEFY-P140VMHS-E.TH-D	Dwg. No.	Notes for the models	Revision info.
			Part Name								
301	E17 K77 810	G	FAN PLATE	80	1				VR02B082G02		
302	E17 K79 810	G	FAN PLATE	140		1	1	1	VR02A024G02		
303	KB02H047G02	G	ATTACHMENT		2				KB02H047G02		
304	VR02C299G01	G	ATTACHMENT MOTOR			2	2	2	VR02C299G01		
305	E17 K63 500	G	SIROCCO FAN ASSY		2				KJ00R045G03		
306	E17 C61 500	G	SIROCCO FAN ASSY			2	2	2	KJ00R045G02		
307	E17 K63 129	G	FAN CASE ASSY		2				KJ00R247G04		
308	E17 K65 129	G	FAN CASE ASSY			2	2	2	KJ00R246G03		
309	E17 C61 509	G	BELL MOUTH		2	2	2	2	VR02D006G02		
310	E17 K63 300	G	MOTOR	SIC-101CW-D8244-3	1				KR61C463H01		
311	E17 K65 300	G	MOTOR	KMUC4E1MW		1	1	1	KR61C478H02		
312	E17 K63 334	G	MOTOR LEG M		1				VR02C297G02		
313	E17 K65 334	G	MOTOR LEG L			1	1	1	VR02C298G03		
314	E17 K63 128	G	MOTOR BASE L		1	1	1	1	VR02C295G02		

CONTROL BOX PARTS



CONTROL BOX PARTS

No.	Part No.	G : RoHS Apply Only W: RoHS Apply by Running Change		Spec.	PEFY-P125VMHS-E.TH	PEFY-P140VMHS-E.TH	PEFY-P40VMHS-E.TH-D	PEFY-P60VMHS-E.TH-D	PEFY-P63VMHS-E.TH-D	PEFY-P71VMHS-E.TH-D	Dwg. No.	Notes for the models	Revision info.
			Part Name										
401	E17 K60 447	G	PRINTED CIRCUIT ASSEMBLY	INDOOR CONTROL	1	1	1	1	1	1	KE01F879B01		
402	E17 642 375	G	TERMINAL BED ASSY		1	1	1	1	1	1	BH00C267G05		
403	E17 154 375	G	TERMINAL BED ASSY		1	1	1	1	1	1	BH00C267G04		
404	E17 156 375	G	TERMINAL BED ASSY		1	1	1	1	1	1	BG00R200G62		
405	E17 K60 337	G	REACTOR	3A6			1	1	1	1	KR65C489H01		
406	E17 K65 337	G	REACTOR	5A6	1	1					KR65C482H01		
407	E17 159 308	G	THERMISTOR-S	550XAP	1	1	1	1	1	1	RG71B018H04		
408	E17 319 013	G	BUSH	SRB-R-2	1	1	1	1	1	1	KB32K138H01		

mitsubishi
MITSUBISHI ELECTRIC CORPORATION

BWE017170 (20171031)