

**Revision G:**

• Some descriptions have been modified.

OBB629 REVISED EDITION-F is void.

## OUTDOOR UNIT

**No. OBB629  
REVISED EDITION-G**

# PARTS CATALOG

### Models

**MUZ-SF25VE** - E1, E2, E3, E4, ER2, ER3, ER4, ET2, ET3, ET4

**MUZ-SF25VEH** - E1, E2, E3, ER2, ET1, ET2

**MUZ-SF35VE** - E1, E2, E3, E4, ER2, ER3, ER4, ET2, ET3, ET4

**MUZ-SF35VEH** - E1, E2, E3, ER2, ET1, ET2

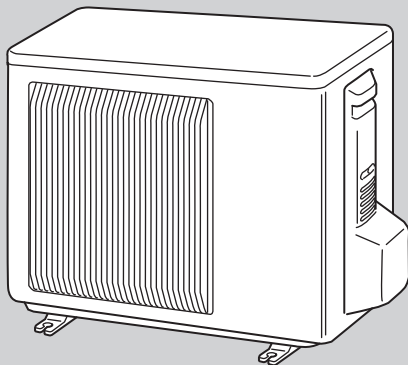
**MUZ-SF42VE** - E1, E2, E3, E4, ER2, ER3, ER4, ET2, ET3, ET4

**MUZ-SF42VEH** - E1, E2, E3, ER2, ET1, ET2

**MUZ-SF50VE** - E1, E2, ER1, ER2, ET1, ET2

**MUZ-SF50VEH** - E1, E2, ET1

MUZ-SF25VE MUZ-SF25VEH  
MUZ-SF35VE MUZ-SF35VEH  
MUZ-SF42VE MUZ-SF42VEH



### CONTENTS

1. SERVICE PARTS LIST..... 2

**SERVICE MANUAL (OBH629)**

### Revision A:

- MUZ-SF25/35/42VE - [E2] have been added.

### Revision B:

- MUZ-SF25/35/42VE - [ER2], MUZ-SF50VE - [ER1] and MUZ-SF25/35/42/50VEH - [ER1] have been added.

### Revision C:

- MUZ-SF25/35/42VE - [ET2], MUZ-SF50VE - [ET1] and MUZ-SF25/35/42/50VEH - [ET1] have been added.

### Revision D:

- MUZ-SF25/35/42VE - [E3], [ER3], [ET3] and MUZ-SF25/35/42VEH - [E2], [ER2], [ET2] have been added.

### Revision E:

- MUZ-SF25/35/42VE - [E4], [ER4], [ET4], MUZ-SF50VE- [E2], [ER2], [ET2], MUZ-SF25/35/42VEH - [E3] and MUZ-SF50VEH- [E2] have been added.

### Revision F:

- Illustrations for MUZ-SF25VE- [E1], [E2], [E3], [E4], [ER2], [ER3], [ER4], [ET2], [ET3], [ET4] and MUZ-SF25VEH- [E1], [E2], [E3], [ER2], [ET1], [ET2] have been modified.

### Revision G:

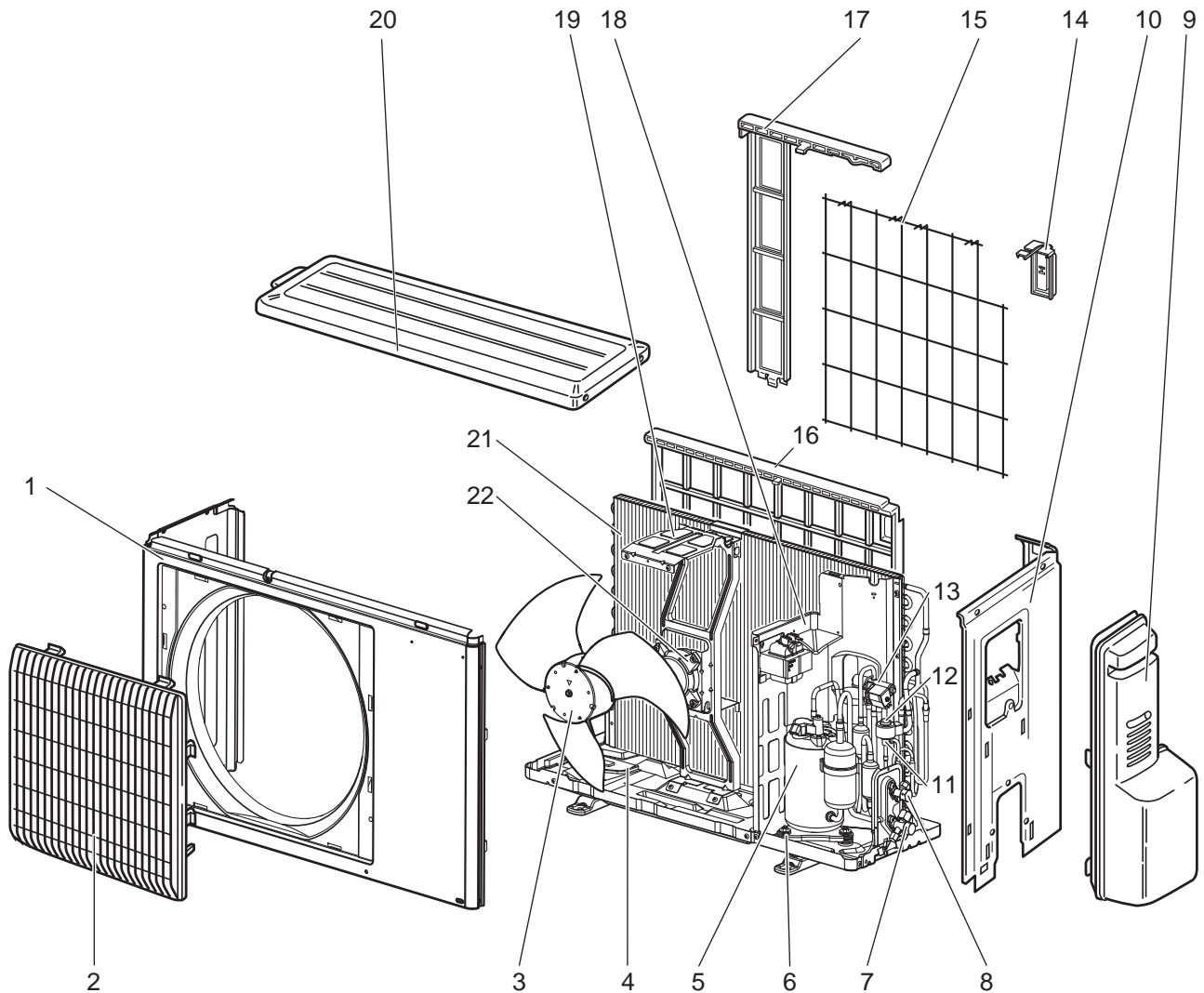
- Some descriptions have been modified.

# 1

# SERVICE PARTS LIST

MUZ-SF25VE - [E1], [E2], [E3], [ER2], [ER3], [ET2], [ET3], [ET4]

## 1-1. OUTDOOR UNIT STRUCTURAL PARTS AND FUNCTIONAL PARTS

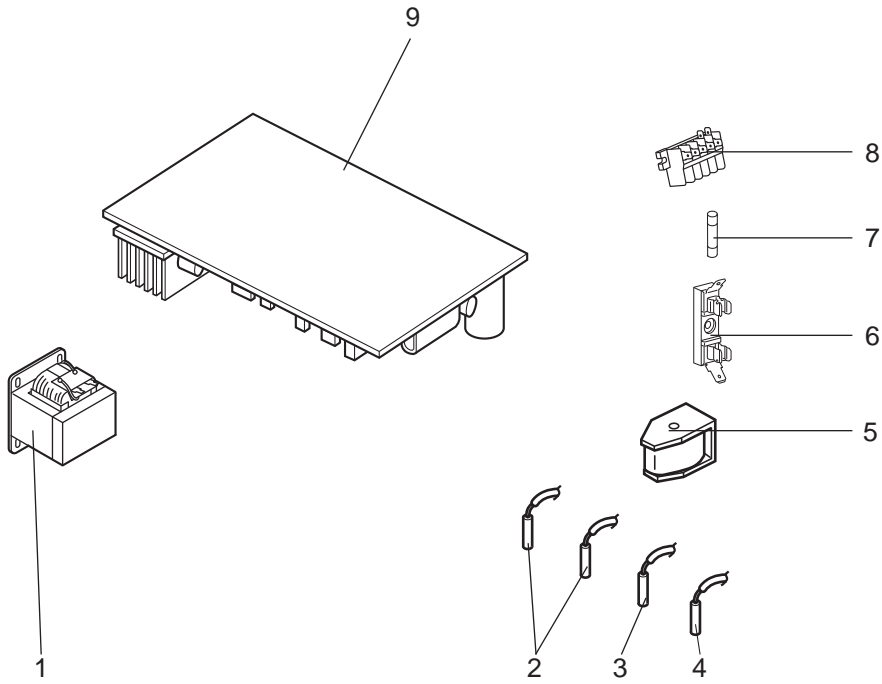


## 1-1. OUTDOOR UNIT STRUCTURAL PARTS AND FUNCTIONAL PARTS

Part numbers that are circled are not shown in the illustration.

No.	Part No.	Part Name	Symbol in Wiring Diagram	Q'ty/unit									Remarks
				MUZ-SF25									
				VE - E1	VE - E2	VE - E3	VE - ER2	VE - ER3	VE - ET2	VE - ET3	VE - ET4		
1	E12 A89 232	CABINET		1	1	1	1	1	1	1	1	1	
2	E12 927 521	GRILLE		1	1	1	1	1	1	1	1	1	
3	E12 927 501	PROPELLER FAN		1	1	1	1	1	1	1	1	1	
4	E12 A89 290	BASE		1	1	1	1	1	1	1	1	1	
5	E12 H18 900	COMPRESSOR	MC	1	1	1	1	1	1	1	1	1	KNB073FKVMC
6	E12 065 506	COMPRESSOR RUBBER SET		3	3	3	3	3	3	3	3	3	3 RUBBERS/SET
7	E12 D69 661	STOP VALVE (GAS)		1	1	1	1	1	1	1	1	1	ø9.52
8	E12 D58 662	STOP VALVE (LIQUID)		1	1	1	1	1	1	1	1	1	ø6.35
9	E12 927 245	SERVICE PANEL		1	1	1	1	1	1	1	1	1	
10	E12 G11 233	BACK PANEL		1	1	1	1	1	1	1	1	1	
11	E12 927 640	EXPANSION VALVE		1	1	1	1	1	1	1	1	1	
12	E12 G10 493	EXPANSION VALVE COIL	LEV	1	1	1	1	1	1	1	1	1	
13	E12 927 961	4-WAY VALVE		1	1	1	1	1	1	1	1	1	
14	E12 928 079	THERMO HOLDER			1	1	1	1	1	1	1	1	
15	E12 928 525	CONDENSER WIRE NET			1	1	1	1	1	1	1	1	
16	E12 H18 523	CONDENSER NET		1									
17	E12 H22 523	CONDENSER NET			1	1	1	1	1	1	1	1	
18	E12 G10 293	SEPARATOR		1	1	1	1	1	1	1	1	1	
19	E12 927 515	MOTOR SUPPORT		1	1	1	1	1	1	1	1	1	
20	E12 927 297	TOP PANEL		1	1	1	1	1	1	1	1	1	
21	E12 H18 630	OUTDOOR HEAT EXCHANGER		1	1	1	1	1	1	1	1	1	
22	E12 G11 301	OUTDOOR FAN MOTOR	MF	1	1		1		1				RC0J50-□□
	E12 P03 301					1		1		1	1		RC0J50-□□
23	E12 927 937	CAPILLARY TUBE		1	1	1	1	1	1	1	1	1	ø3.0×ø2.0×240
24	E12 838 704	DRAIN SOCKET		1	1	1	1	1	1	1	1	1	

**MUZ-SF25VE - [E1], [E2], [E3], [ER2], [ER3], [ET2], [ET3], [ET4]**  
**1-2. OUTDOOR UNIT ELECTRICAL PARTS**

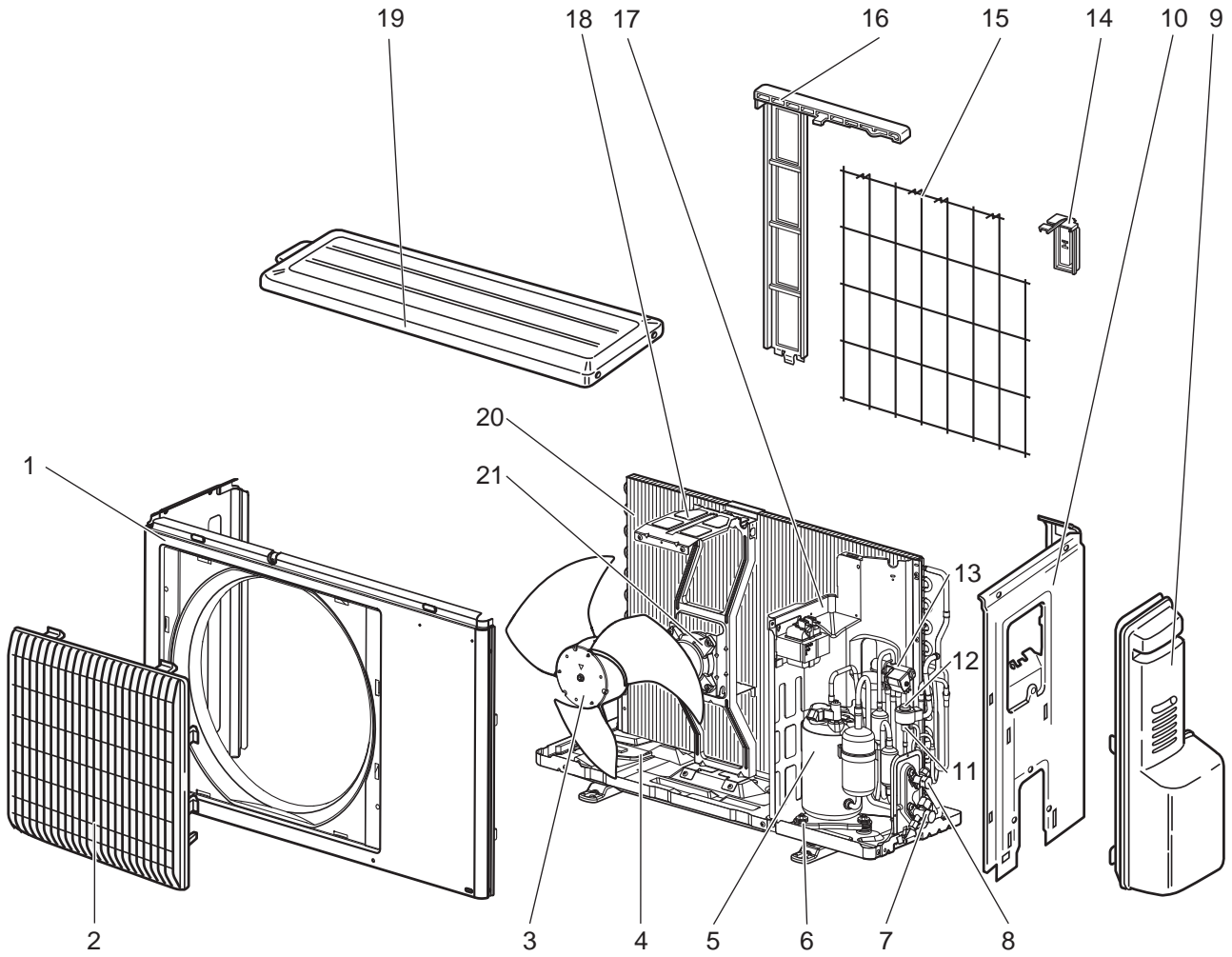


## 1-2. OUTDOOR UNIT ELECTRICAL PARTS

No.	Part No.	Part Name	Symbol in Wiring Diagram	Q'ty/unit								Remarks
				MUZ-SF25								
				VE	VE	VE	VE	VE	VE	VE	VE	
				- [E1]	- [E2]	- [E3]	- [ER2]	- [ER3]	- [ET2]	- [ET3]	- [ET4]	
1	E12 G10 337	REACTOR	L61	1	1	1	1	1	1	1	1	
2	E12 C34 306	THERMISTOR SET	RT61, RT62	1	1	1	1	1	1	1	1	DEFROST, DISCHARGE
3	E12 G10 309	AMBIENT TEMPERATURE THERMISTOR	RT65	1	1	1	1	1	1	1	1	
4	E12 C34 307	OUTDOOR HEAT EXCHANGER TEMPERATURE THERMISTOR	RT68	1	1	1	1	1	1	1	1	
5	E12 G10 490	R.V. COIL	21S4	1	1	1	1	1	1	1	1	
6	E12 735 241	FUSE HOLDER		1	1	1	1	1	1	1	1	
7	E12 735 382	FUSE	F61	1	1	1	1	1	1	1	1	T20AL250V
8	E12 G16 374	TERMINAL BLOCK	TB	1	1	1	1	1	1	1		5 P
	E12 T95 374										1	
9	E12 H18 451	INVERTER P.C. BOARD		1	1		1		1			Includes heat sink and RT64
	E12 P13 451					1		1		1	1	

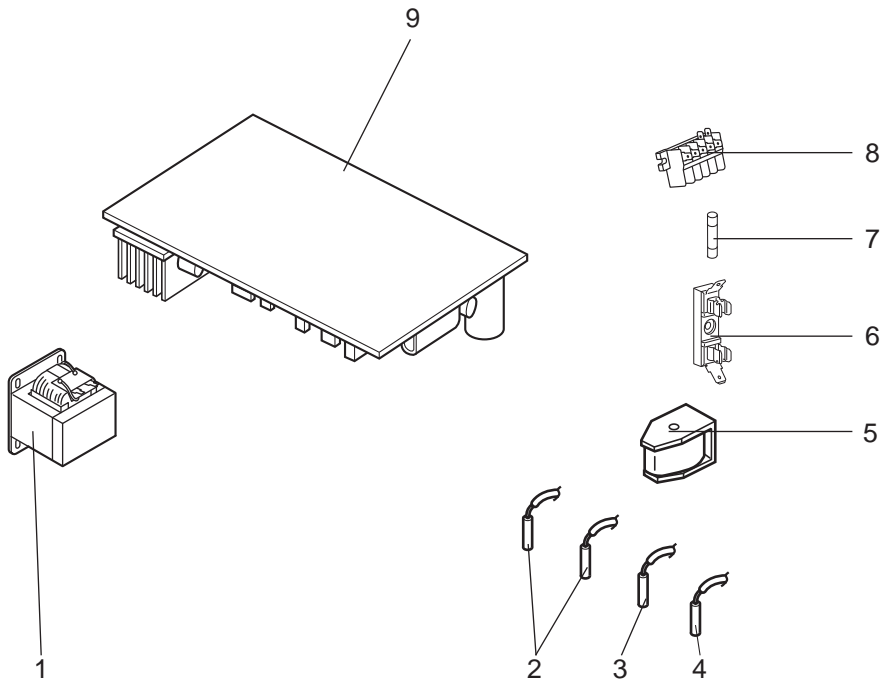
MUZ-SF25VE - E4, ER4

### 1-3. OUTDOOR UNIT STRUCTURAL PARTS AND FUNCTIONAL PARTS



MUZ-SF25VE - E4, ER4

### 1-4. OUTDOOR UNIT ELECTRICAL PARTS



OBB629G

### 1-3. OUTDOOR UNIT STRUCTURAL PARTS AND FUNCTIONAL PARTS

Part numbers that are circled are not shown in the illustration.

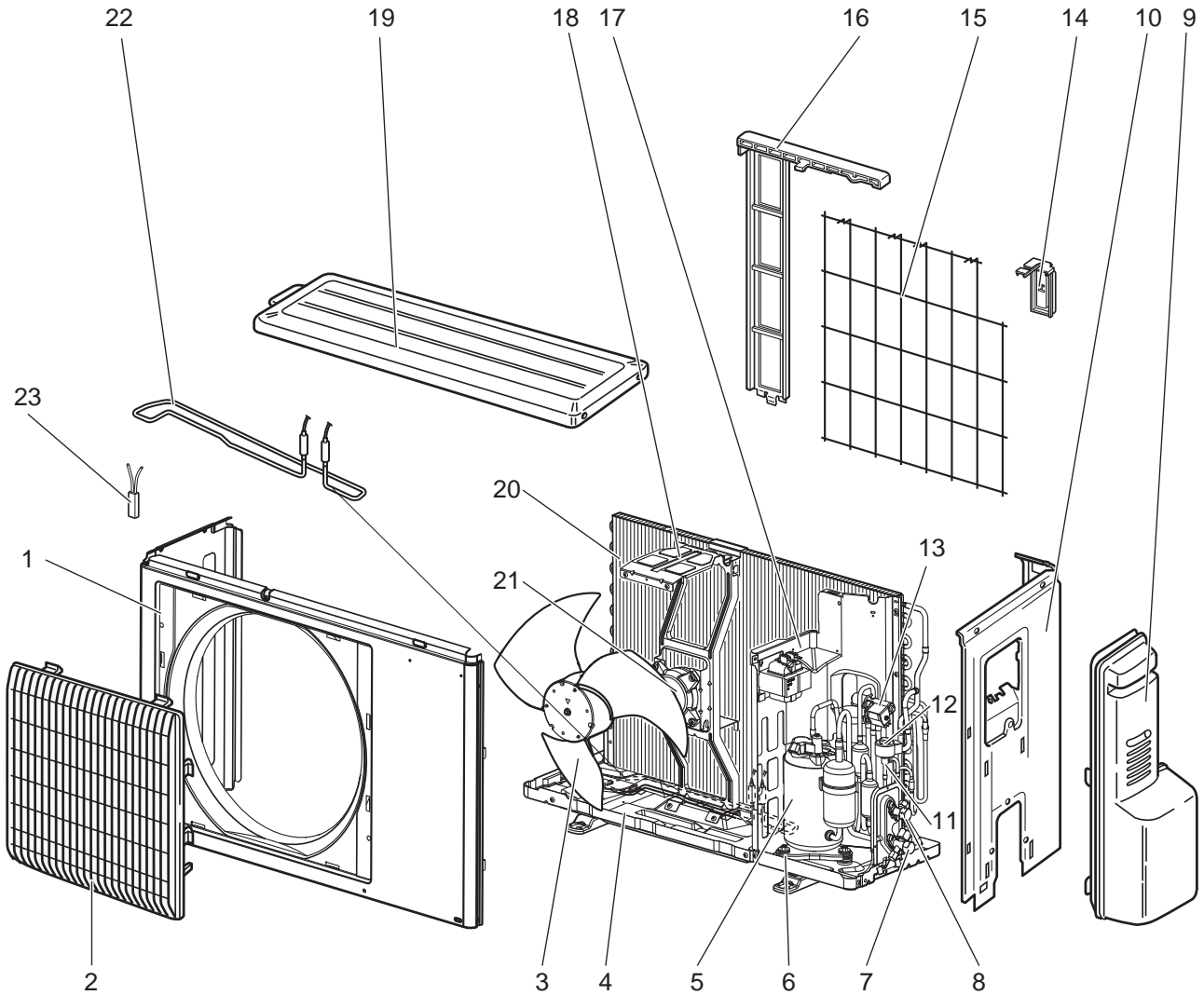
No.	Part No.	Part Name	Symbol in Wiring Diagram	Q'ty/unit		Remarks
				MUZ-SF25		
				VE- [E4]	VE- [ER4]	
1	E22 A89 232	CABINET		1	1	
2	E22 927 521	GRILLE		1	1	
3	E22 927 501	PROPELLER FAN		1	1	
4	E22 A89 290	BASE		1	1	
5	E22 H18 900	COMPRESSOR	MC	1	1	KNB073FKVMC
6	E22 065 506	COMPRESSOR RUBBER SET		3	3	3 RUBBERS/SET
7	E22 D69 661	STOP VALVE (GAS)		1	1	ø9.52
8	E22 D58 662	STOP VALVE (LIQUID)		1	1	ø6.35
9	E22 927 245	SERVICE PANEL		1	1	
10	E22 G11 233	BACK PANEL		1	1	
11	E22 927 640	EXPANSION VALVE		1	1	
12	E22 G10 493	EXPANSION VALVE COIL	LEV	1	1	
13	E22 927 961	4-WAY VALVE		1	1	
14	E22 928 079	THERMO HOLDER		1	1	
15	E22 928 525	CONDENSER WIRE NET		1	1	
16	E22 H22 523	CONDENSER NET		1	1	
17	E22 G10 293	SEPARATOR		1	1	
18	E22 927 515	MOTOR SUPPORT		1	1	
19	E22 927 297	TOP PANEL		1	1	
20	E22 H18 630	OUTDOOR HEAT EXCHANGER		1	1	
21	E22 P03 301	OUTDOOR FAN MOTOR	MF	1	1	RC0J50-□□
22	E22 927 937	CAPILLARY TUBE		1	1	ø3.0×ø2.0×240
23	E22 838 704	DRAIN SOCKET		1	1	

### 1-4. OUTDOOR UNIT ELECTRICAL PARTS

No.	Part No.	Part Name	Symbol in Wiring Diagram	Q'ty/unit		Remarks
				MUZ-SF25		
				VE- [E4]	VE- [ER4]	
1	E22 G10 337	REACTOR	L61	1	1	
2	E22 C34 306	THERMISTOR SET	RT61, RT62	1	1	DEFROST, DISCHARGE
3	E22 G10 309	AMBIENT TEMPERATURE THERMISTOR	RT65	1	1	
4	E22 C34 307	OUTDOOR HEAT EXCHANGER TEMPERATURE THERMISTOR	RT68	1	1	
5	E22 G10 490	R.V. COIL	21S4	1	1	
6	E22 735 241	FUSE HOLDER		1	1	
7	E22 735 382	FUSE	F61	1	1	T20AL250V
8	E22 T95 374	TERMINAL BLOCK	TB	1	1	5 P
9	E22 P13 451	INVERTER P.C. BOARD		1	1	Includes heat sink and RT64

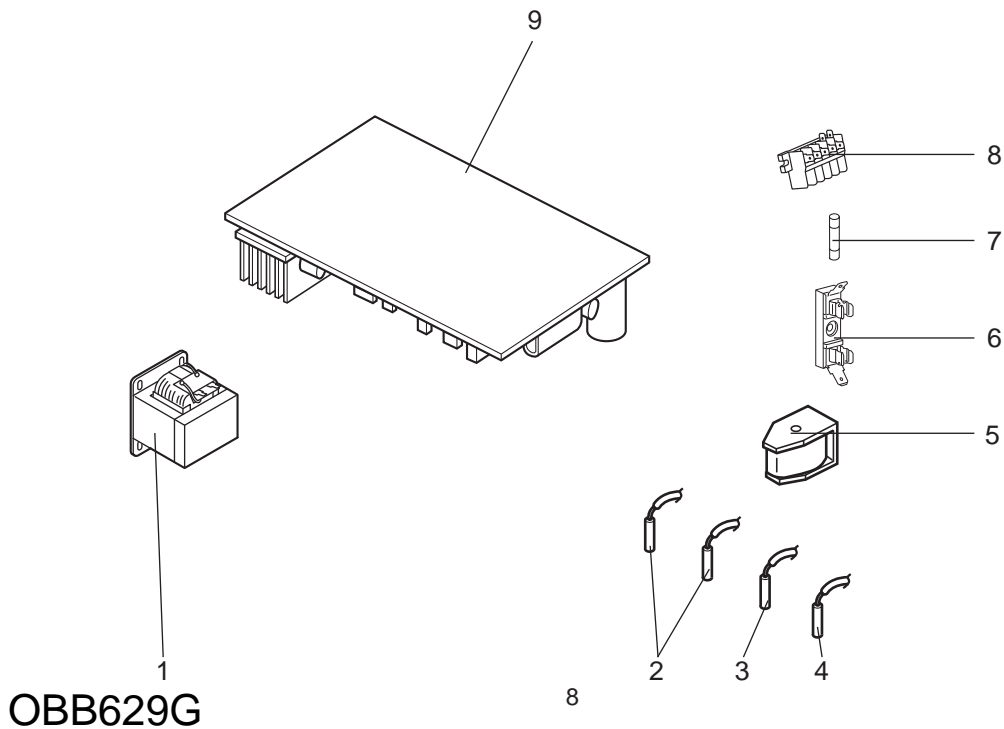
MUZ-SF25VEH - E1, E2, ER2, ET1, ET2

### 1-5. OUTDOOR UNIT STRUCTURAL PARTS AND FUNCTIONAL PARTS



MUZ-SF25VEH - E1, E2, ER2, ET1, ET2

### 1-6. OUTDOOR UNIT ELECTRICAL PARTS





## 1-5. OUTDOOR UNIT STRUCTURAL PARTS AND FUNCTIONAL PARTS

Part number that is circled is not shown in the illustration.

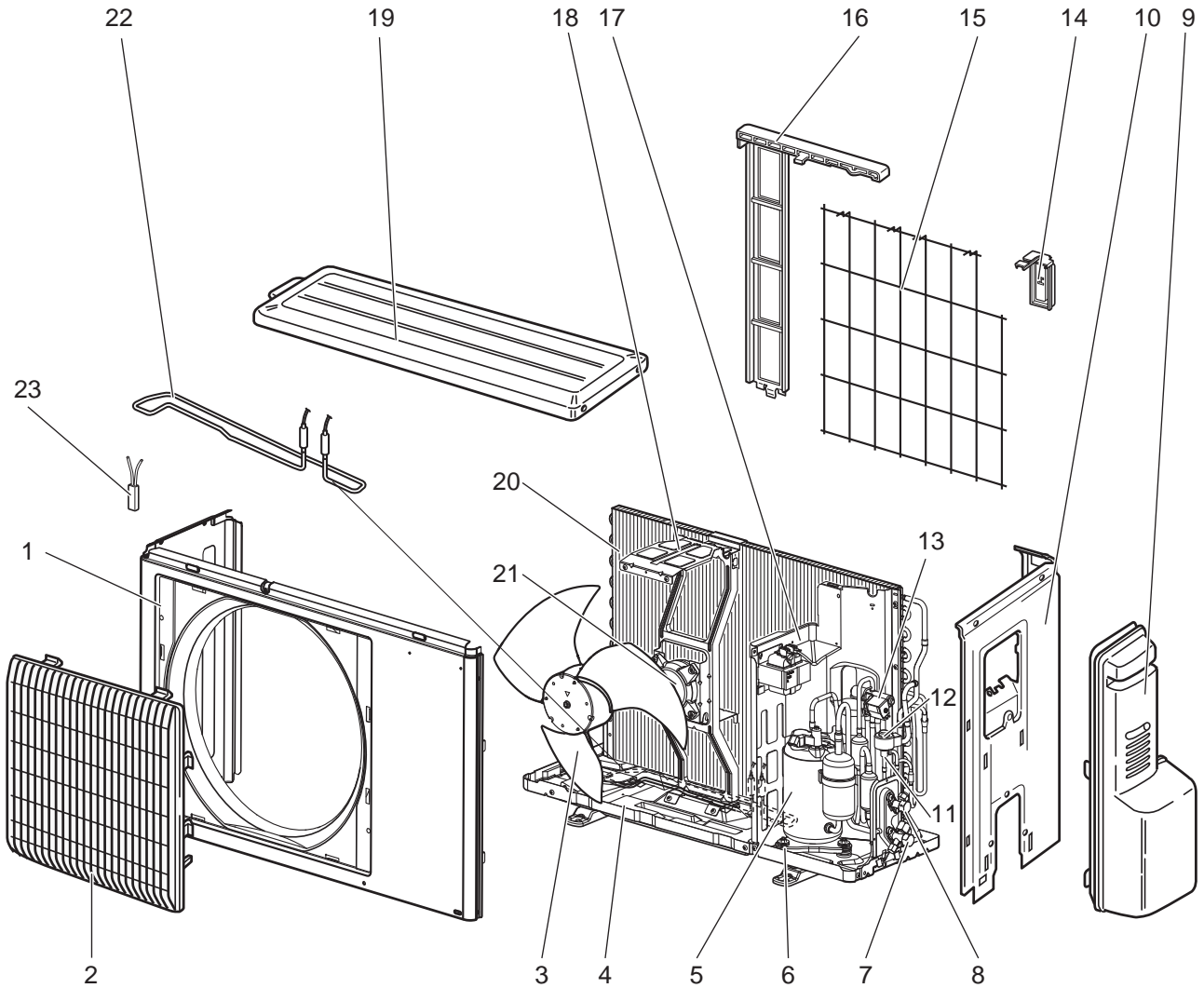
No.	Part No.	Part Name	Symbol in Wiring Diagram	Q'ty/unit					Remarks
				MUZ-SF25					
				VEH - [E1]	VEH - [E2]	VEH - [ER2]	VEH - [ET1]	VEH - [ET2]	
1	E12 A89 232	CABINET		1	1	1	1	1	
2	E12 927 521	GRILLE		1	1	1	1	1	
3	E12 927 501	PROPELLER FAN		1	1	1	1	1	
4	E12 H22 290	BASE		1	1	1	1	1	
5	E12 H18 900	COMPRESSOR	MC	1	1	1	1	1	KNB073FKVMC
6	E12 065 506	COMPRESSOR RUBBER SET		3	3	3	3	3	3 RUBBERS/SET
7	E12 D69 661	STOP VALVE (GAS)		1	1	1	1	1	ø9.52
8	E12 D58 662	STOP VALVE (LIQUID)		1	1	1	1	1	ø6.35
9	E12 927 245	SERVICE PANEL		1	1	1	1	1	
10	E12 G13 233	BACK PANEL		1	1	1	1	1	
11	E12 927 640	EXPANSION VALVE		1	1	1	1	1	
12	E12 G10 493	EXPANSION VALVE COIL	LEV	1	1	1	1	1	
13	E12 927 961	4-WAY VALVE		1	1	1	1	1	
14	E12 928 079	THERMO HOLDER		1	1	1	1	1	
15	E12 928 525	CONDENSER WIRE NET		1	1	1	1	1	
16	E12 H22 523	CONDENSER NET		1	1	1	1	1	
17	E12 G13 293	SEPARATOR		1	1	1	1	1	
18	E12 927 515	MOTOR SUPPORT		1	1	1	1	1	
19	E12 927 297	TOP PANEL		1	1	1	1	1	
20	E12 H18 630	OUTDOOR HEAT EXCHANGER		1	1	1	1	1	
21	E12 G11 301	OUTDOOR FAN MOTOR	MF	1			1		RC0J50-□□
	E12 P03 301				1	1		1	RC0J50-□□
22	E12 C36 526	DEFROST HEATER	H	1	1	1	1	1	
23	E12 C36 381	HEATER PROTECTOR	26H	1	1	1	1	1	
24	E12 927 937	CAPILLARY TUBE		1	1	1	1	1	ø3.0×ø2.0×240

## 1-6. OUTDOOR UNIT ELECTRICAL PARTS

No.	Part No.	Part Name	Symbol in Wiring Diagram	Q'ty/unit					Remarks
				MUZ-SF25					
				VEH - [E1]	VEH - [E2]	VEH - [ER2]	VEH - [ET1]	VEH - [ET2]	
1	E12 G10 337	REACTOR	L61	1	1	1	1	1	
2	E12 C34 306	THERMISTOR SET	RT61, RT62	1	1	1	1	1	DEFROST, DISCHARGE
3	E12 G10 309	AMBIENT TEMPERATURE THERMISTOR	RT65	1	1	1	1	1	
4	E12 C34 307	OUTDOOR HEAT EXCHANGER TEMPERATURE THERMISTOR	RT68	1	1	1	1	1	
5	E12 G10 490	R.V. COIL	21S4	1	1	1	1	1	
6	E12 735 241	FUSE HOLDER		1	1	1	1	1	
7	E12 735 382	FUSE	F61	1	1	1	1	1	T20AL250V
8	E12 G16 374	TERMINAL BLOCK	TB	1	1	1	1	1	5 P
	E12 T95 374								
9	E12 H22 451	INVERTER P.C. BOARD		1			1		Includes heat sink and RT64
	E12 P19 451				1	1		1	

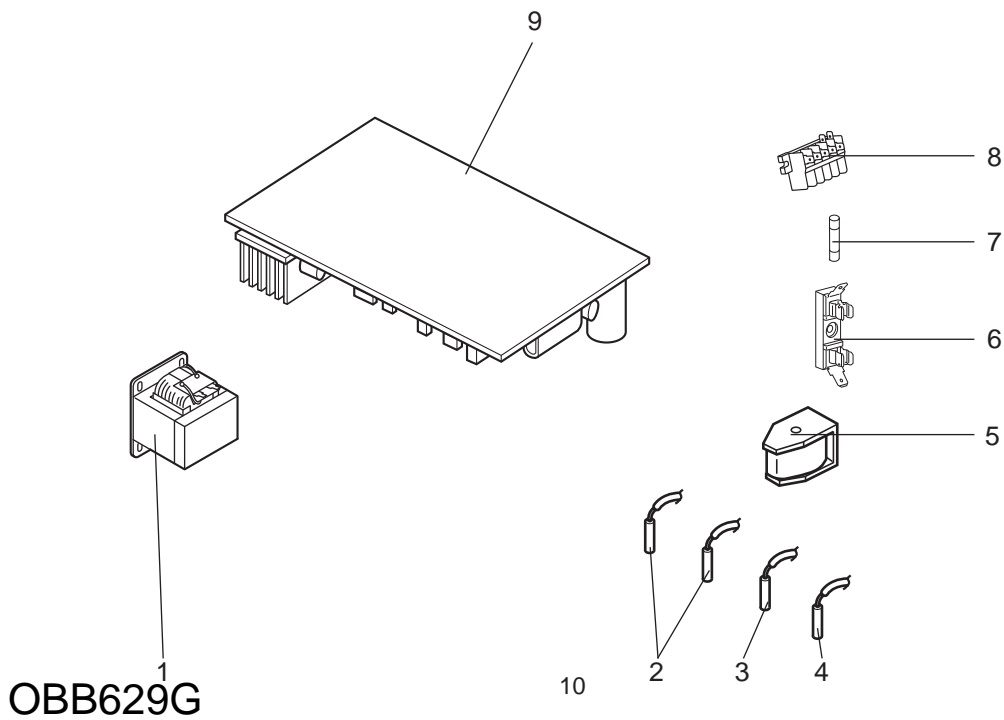
MUZ-SF25VEH- E3

1-7. OUTDOOR UNIT STRUCTURAL PARTS AND FUNCTIONAL PARTS



MUZ-SF25VEH- E3

1-8. OUTDOOR UNIT ELECTRICAL PARTS



## 1-7. OUTDOOR UNIT STRUCTURAL PARTS AND FUNCTIONAL PARTS

Part number that is circled is not shown in the illustration.

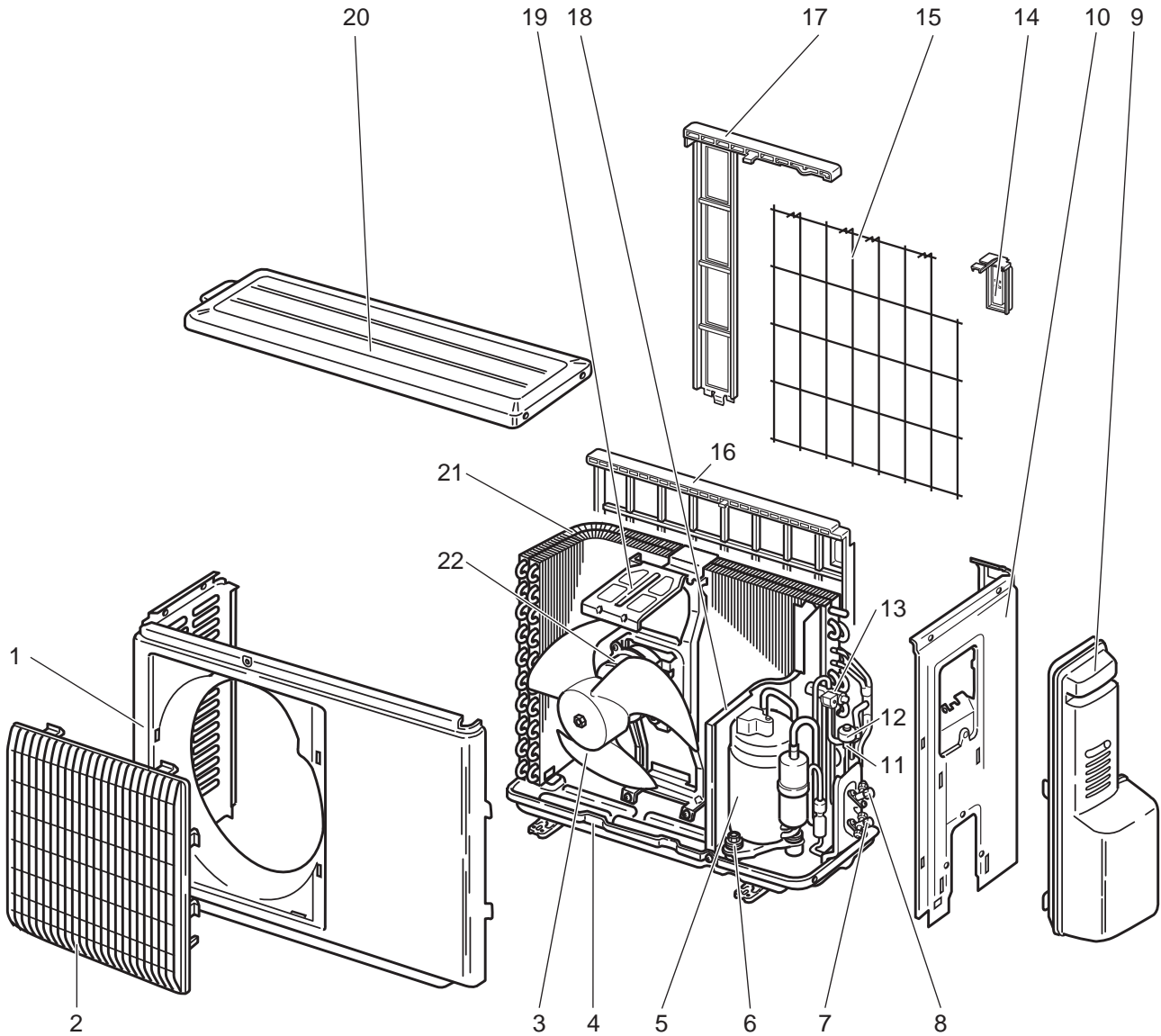
No.	Part No.	Part Name	Symbol in Wiring Diagram	Q'ty/unit		Remarks
				MUZ-SF25		
				VEH- [E3]		
1	E22 A89 232	CABINET		1		
2	E22 927 521	GRILLE		1		
3	E22 927 501	PROPELLER FAN		1		
4	E22 H22 290	BASE		1		
5	E22 H18 900	COMPRESSOR	MC	1		KNB073FKVMC
6	E22 065 506	COMPRESSOR RUBBER SET		3		3 RUBBERS/SET
7	E22 D69 661	STOP VALVE (GAS)		1		ø9.52
8	E22 D58 662	STOP VALVE (LIQUID)		1		ø6.35
9	E22 927 245	SERVICE PANEL		1		
10	E22 G13 233	BACK PANEL		1		
11	E22 927 640	EXPANSION VALVE		1		
12	E22 G10 493	EXPANSION VALVE COIL	LEV	1		
13	E22 927 961	4-WAY VALVE		1		
14	E22 928 079	THERMO HOLDER		1		
15	E22 928 525	CONDENSER WIRE NET		1		
16	E22 H22 523	CONDENSER NET		1		
17	E22 G13 293	SEPARATOR		1		
18	E22 927 515	MOTOR SUPPORT		1		
19	E22 927 297	TOP PANEL		1		
20	E22 H18 630	OUTDOOR HEAT EXCHANGER		1		
21	E22 P03 301	OUTDOOR FAN MOTOR	MF	1		RC0J50-□□
22	E22 C36 526	DEFROST HEATER	H	1		
23	E22 C36 381	HEATER PROTECTOR	26H	1		
24	E22 927 937	CAPILLARY TUBE		1		ø3.0xø2.0x240

## 1-8. OUTDOOR UNIT ELECTRICAL PARTS

No.	Part No.	Part Name	Symbol in Wiring Diagram	Q'ty/unit		Remarks
				MUZ-SF25		
				VEH- [E3]		
1	E22 G10 337	REACTOR	L61	1		
2	E22 C34 306	THERMISTOR SET	RT61, RT62	1		DEFROST, DISCHARGE
3	E22 G10 309	AMBIENT TEMPERATURE THERMISTOR	RT65	1		
4	E22 C34 307	OUTDOOR HEAT EXCHANGER TEMPERATURE THERMISTOR	RT68	1		
5	E22 G10 490	R.V. COIL	21S4	1		
6	E22 735 241	FUSE HOLDER		1		
7	E22 735 382	FUSE	F61	1		T20AL250V
8	E22 T95 374	TERMINAL BLOCK	TB	1		5 P
9	E22 P19 451	INVERTER P.C. BOARD		1		Includes heat sink and RT64

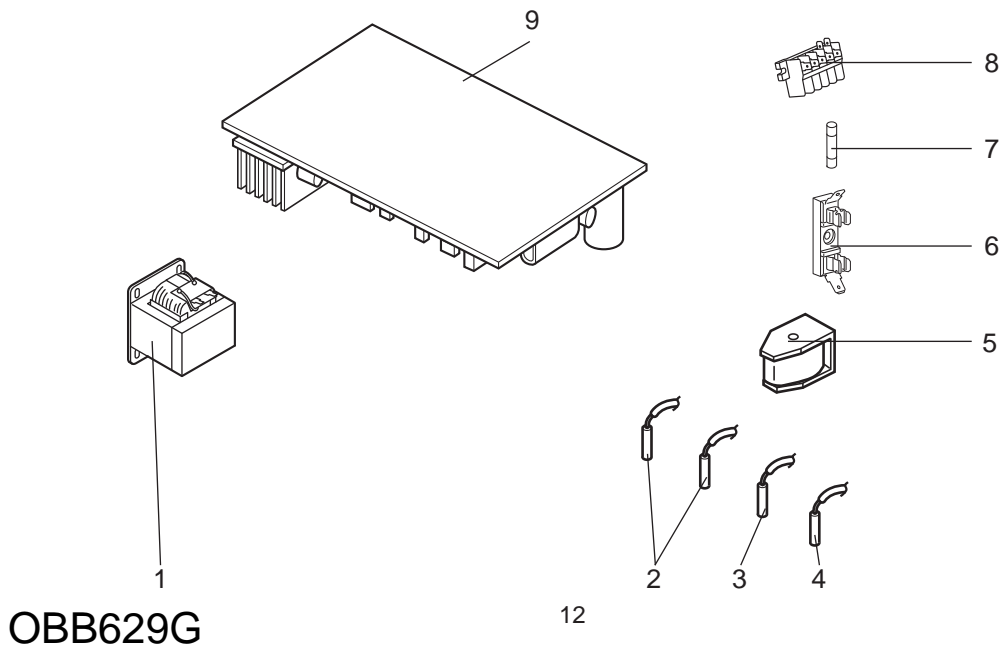
MUZ-SF35VE - E1, E2, E3, ER2, ER3, ET2, ET3, ET4

### 1-9. OUTDOOR UNIT STRUCTURAL PARTS AND FUNCTIONAL PARTS



MUZ-SF35VE - E1, E2, E3, ER2, ER3, ET2, ET3, ET4

### 1-10. OUTDOOR UNIT ELECTRICAL PARTS



OBB629G

## 1-9. OUTDOOR UNIT STRUCTURAL PARTS AND FUNCTIONAL PARTS

Part numbers that are circled are not shown in the illustration.

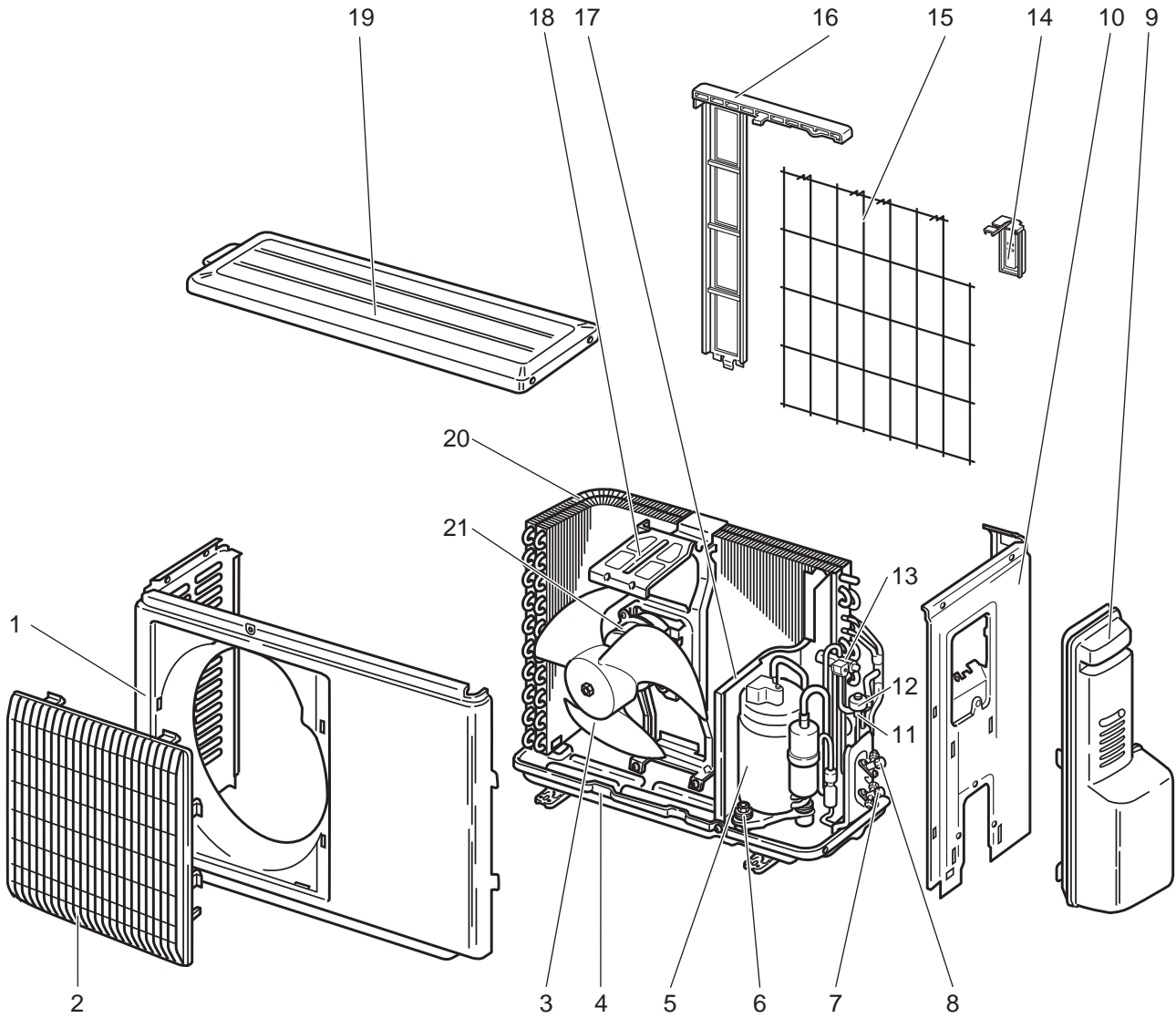
No.	Part No.	Part Name	Symbol in Wiring Diagram	Q'ty/unit									Remarks
				MUZ-SF35									
				VE - [E1]	VE - [E2]	VE - [E3]	VE - [ER2]	VE - [ER3]	VE - [ET2]	VE - [ET3]	VE - [ET4]		
1	E12 927 232	CABINET		1	1	1	1	1	1	1	1		
2	E12 927 521	GRILLE		1	1	1	1	1	1	1	1		
3	E12 927 501	PROPELLER FAN		1	1	1	1	1	1	1	1		
4	E12 D69 290	BASE		1	1	1	1	1	1	1	1		
5	E12 H19 900	COMPRESSOR	MC	1	1	1	1	1	1	1	1	KNB092FNDMC	
6	E12 065 506	COMPRESSOR RUBBER SET		3	3	3	3	3	3	3	3	3 RUBBERS/SET	
7	E12 D69 661	STOP VALVE (GAS)		1	1	1	1	1	1	1	1	ø9.52	
8	E12 D58 662	STOP VALVE (LIQUID)		1	1	1	1	1	1	1	1	ø6.35	
9	E12 927 245	SERVICE PANEL		1	1	1	1	1	1	1	1		
10	E12 G12 233	BACK PANEL		1	1	1	1	1	1	1	1		
11	E12 927 640	EXPANSION VALVE		1	1	1	1	1	1	1	1		
12	E12 G10 493	EXPANSION VALVE COIL	LEV	1	1	1	1	1	1	1	1		
13	E12 927 961	4-WAY VALVE		1	1	1	1	1	1	1	1		
14	E12 928 079	THERMO HOLDER			1	1	1	1	1	1	1		
15	E12 928 525	CONDENSER WIRE NET			1	1	1	1	1	1	1		
16	E12 B83 523	CONDENSER NET		1									
17	E12 928 523	CONDENSER NET			1	1	1	1	1	1	1		
18	E12 G10 293	SEPARATOR		1	1	1	1	1	1	1	1		
19	E12 927 515	MOTOR SUPPORT		1	1	1	1	1	1	1	1		
20	E12 927 297	TOP PANEL		1	1	1	1	1	1	1	1		
21	E12 H19 630	OUTDOOR HEAT EXCHANGER		1	1	1	1	1	1	1	1		
22	E12 G11 301	OUTDOOR FAN MOTOR	MF	1	1		1		1			RC0J50-□□	
	E12 P03 301					1		1	1			RC0J50-□□	
23	E12 927 937	CAPILLARY TUBE		1	1	1	1	1	1	1	1	ø3.0xø2.0x240	
24	E12 838 704	DRAIN SOCKET		1	1	1	1	1	1	1	1		

## 1-10. OUTDOOR UNIT ELECTRICAL PARTS

No.	Part No.	Part Name	Symbol in Wiring Diagram	Q'ty/unit									Remarks
				MUZ-SF35									
				VE - [E1]	VE - [E2]	VE - [E3]	VE - [ER2]	VE - [ER3]	VE - [ET2]	VE - [ET3]	VE - [ET4]		
1	E12 G11 337	REACTOR	L61	1	1	1	1	1	1	1	1		
2	E12 C34 306	THERMISTOR SET	RT61, RT62	1	1	1	1	1	1	1	1	DEFROST, DISCHARGE	
3	E12 G10 309	AMBIENT TEMPERATURE THERMISTOR	RT65	1	1	1	1	1	1	1	1		
4	E12 C34 307	OUTDOOR HEAT EXCHANGER TEMPERATURE THERMISTOR	RT68	1	1	1	1	1	1	1	1		
5	E12 G10 490	R.V. COIL	21S4	1	1	1	1	1	1	1	1		
6	E12 735 241	FUSE HOLDER		1	1	1	1	1	1	1	1		
7	E12 735 382	FUSE	F61	1	1	1	1	1	1	1	1	T20AL250V	
8	E12 G16 374	TERMINAL BLOCK	TB	1	1	1	1	1	1	1		5 P	
	E12 T95 374									1			
9	E12 H19 451	INVERTER P.C. BOARD		1	1		1		1			Includes heat sink and RT64	
	E12 P14 451					1		1		1	1		

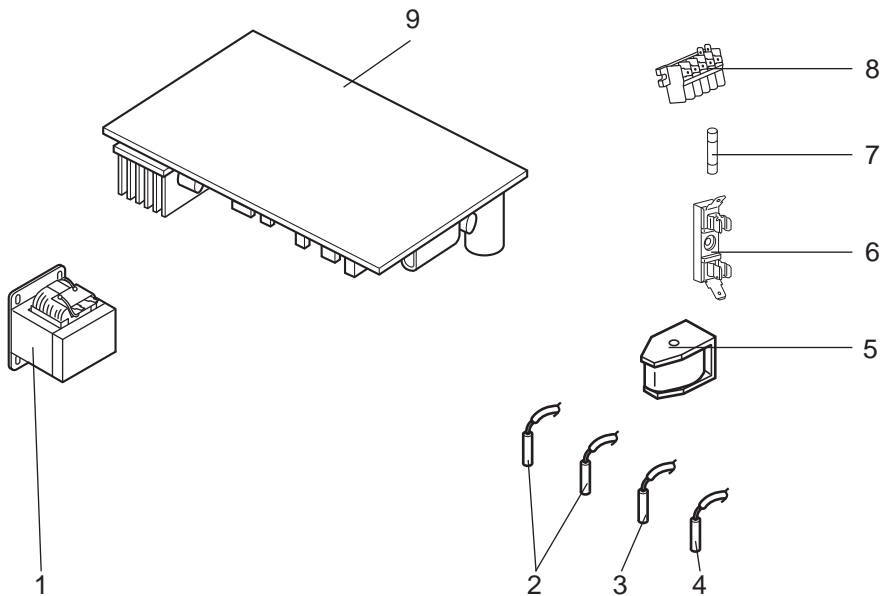
MUZ-SF35VE - E4, ER4

### 1-11. OUTDOOR UNIT STRUCTURAL PARTS AND FUNCTIONAL PARTS



MUZ-SF35VE - E4, ER4

### 1-12. OUTDOOR UNIT ELECTRICAL PARTS



## 1-11. OUTDOOR UNIT STRUCTURAL PARTS AND FUNCTIONAL PARTS

Part numbers that are circled are not shown in the illustration.

No.	Part No.	Part Name	Symbol in Wiring Diagram	Q'ty/unit		Remarks
				MUZ-SF35		
				VE- [E4]	VE- [ER4]	
1	E22 927 232	CABINET		1	1	
2	E22 927 521	GRILLE		1	1	
3	E22 927 501	PROPELLER FAN		1	1	
4	E22 D69 290	BASE		1	1	
5	E22 H19 900	COMPRESSOR	MC	1	1	KNB092FNDMC
6	E22 065 506	COMPRESSOR RUBBER SET		3	3	3 RUBBERS/SET
7	E22 D69 661	STOP VALVE (GAS)		1	1	ø9.52
8	E22 D58 662	STOP VALVE (LIQUID)		1	1	ø6.35
9	E22 927 245	SERVICE PANEL		1	1	
10	E22 G12 233	BACK PANEL		1	1	
11	E22 927 640	EXPANSION VALVE		1	1	
12	E22 G10 493	EXPANSION VALVE COIL	LEV	1	1	
13	E22 927 961	4-WAY VALVE		1	1	
14	E22 928 079	THERMO HOLDER		1	1	
15	E22 928 525	CONDENSER WIRE NET		1	1	
16	E22 928 523	CONDENSER NET		1	1	
17	E22 G10 293	SEPARATOR		1	1	
18	E22 927 515	MOTOR SUPPORT		1	1	
19	E22 927 297	TOP PANEL		1	1	
20	E22 H19 630	OUTDOOR HEAT EXCHANGER		1	1	
21	E22 P03 301	OUTDOOR FAN MOTOR	MF	1	1	RC0J50-□□
②②	E22 927 937	CAPILLARY TUBE		1	1	ø3.0×ø2.0×240
②③	E22 838 704	DRAIN SOCKET		1	1	

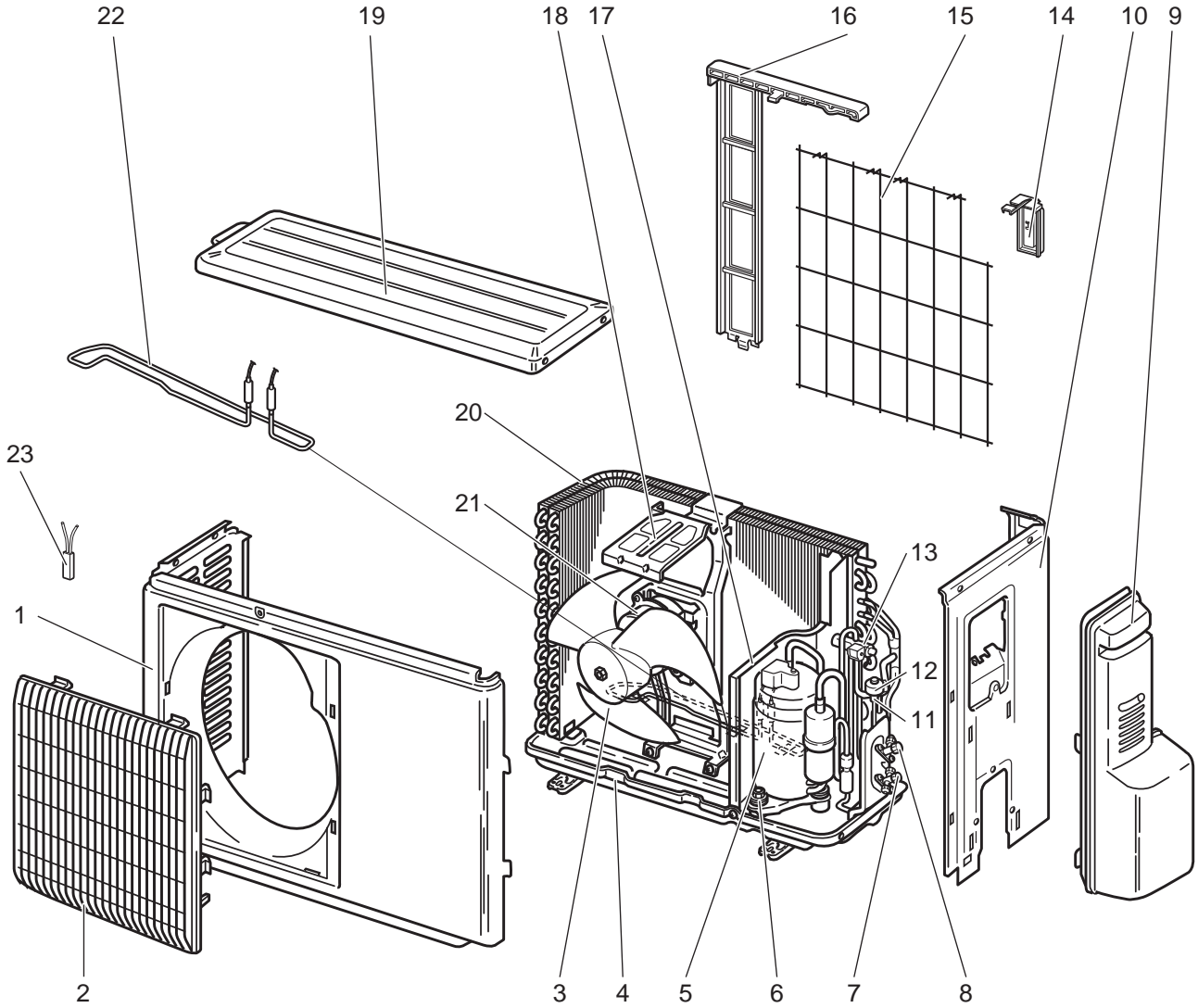
## 1-12. OUTDOOR UNIT ELECTRICAL PARTS

No.	Part No.	Part Name	Symbol in Wiring Diagram	Q'ty/unit		Remarks
				MUZ-SF35		
				VE- [E4]	VE- [ER4]	
1	E22 G11 337	REACTOR	L61	1	1	
2	E22 C34 306	THERMISTOR SET	RT61, RT62	1	1	DEFROST, DISCHARGE
3	E22 G10 309	AMBIENT TEMPERATURE THERMISTOR	RT65	1	1	
4	E22 C34 307	OUTDOOR HEAT EXCHANGER TEMPERATURE THERMISTOR	RT68	1	1	
5	E22 G10 490	R.V. COIL	21S4	1	1	
6	E22 735 241	FUSE HOLDER		1	1	
7	E22 735 382	FUSE	F61	1	1	T20AL250V
8	E22 T95 374	TERMINAL BLOCK	TB	1	1	5 P
9	E22 P14 451	INVERTER P.C. BOARD		1	1	Includes heat sink and RT64



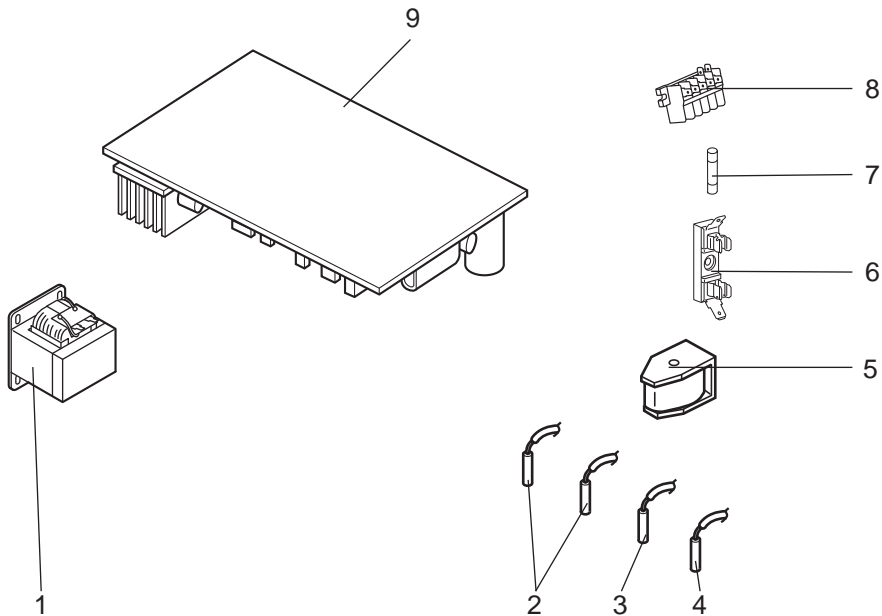
MUZ-SF35VEH - E1, E2, ER2, ET1, ET2

1-13. OUTDOOR UNIT STRUCTURAL PARTS AND FUNCTIONAL PARTS



MUZ-SF35VEH - E1, E2, ER2, ET1, ET2

1-14. OUTDOOR UNIT ELECTRICAL PARTS





## 1-13. OUTDOOR UNIT STRUCTURAL PARTS AND FUNCTIONAL PARTS

Part number that is circled is not shown in the illustration.

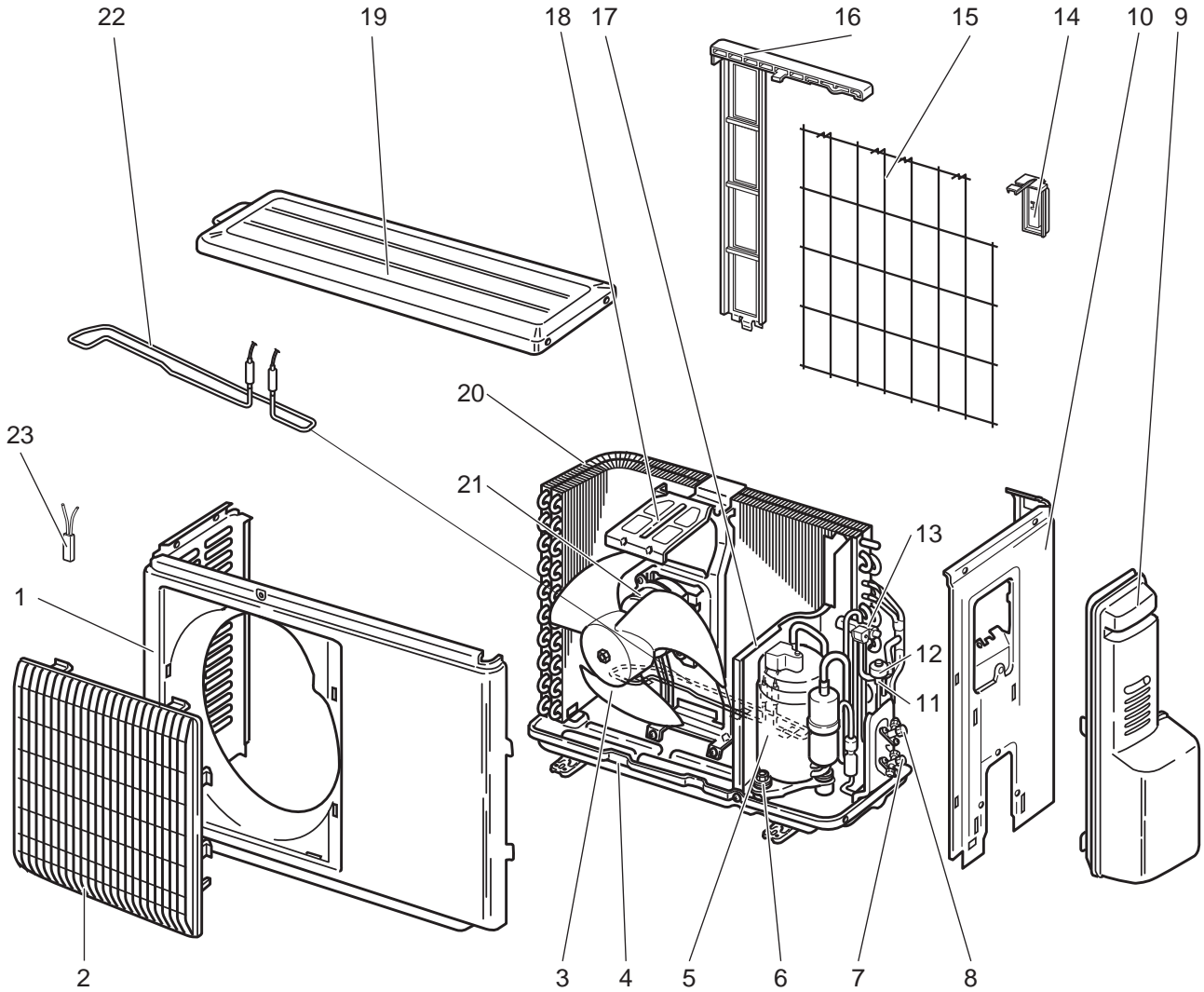
No.	Part No.	Part Name	Symbol in Wiring Diagram	Q'ty/unit					Remarks
				MUZ-SF35					
				VEH - [E1]	VEH - [E2]	VEH - [ER2]	VEH - [ET1]	VEH - [ET2]	
1	E12 927 232	CABINET		1	1	1	1	1	
2	E12 927 521	GRILLE		1	1	1	1	1	
3	E12 927 501	PROPELLER FAN		1	1	1	1	1	
4	E12 D70 290	BASE		1	1	1	1	1	
5	E12 H19 900	COMPRESSOR	MC	1	1	1	1	1	KNB092FNDMC
6	E12 065 506	COMPRESSOR RUBBER SET		3	3	3	3	3	3 RUBBERS/SET
7	E12 D69 661	STOP VALVE (GAS)		1	1	1	1	1	ø9.52
8	E12 D58 662	STOP VALVE (LIQUID)		1	1	1	1	1	ø6.35
9	E12 927 245	SERVICE PANEL		1	1	1	1	1	
10	E12 G14 233	BACK PANEL		1	1	1	1	1	
11	E12 927 640	EXPANSION VALVE		1	1	1	1	1	
12	E12 G10 493	EXPANSION VALVE COIL	LEV	1	1	1	1	1	
13	E12 927 961	4-WAY VALVE		1	1	1	1	1	
14	E12 928 079	THERMO HOLDER		1	1	1	1	1	
15	E12 928 525	CONDENSER WIRE NET		1	1	1	1	1	
16	E12 928 523	CONDENSER NET		1	1	1	1	1	
17	E12 G13 293	SEPARATOR		1	1	1	1	1	
18	E12 927 515	MOTOR SUPPORT		1	1	1	1	1	
19	E12 927 297	TOP PANEL		1	1	1	1	1	
20	E12 H19 630	OUTDOOR HEAT EXCHANGER		1	1	1	1	1	
21	E12 G11 301	OUTDOOR FAN MOTOR	MF	1			1		RC0J50-□□
	E12 P03 301				1	1		1	RC0J50-□□
22	E12 C36 526	DEFROST HEATER	H	1	1	1	1	1	
23	E12 C36 381	HEATER PROTECTOR	26H	1	1	1	1	1	
24	E12 927 937	CAPILLARY TUBE		1	1	1	1	1	ø3.0×ø2.0×240

## 1-14. OUTDOOR UNIT ELECTRICAL PARTS

No.	Part No.	Part Name	Symbol in Wiring Diagram	Q'ty/unit					Remarks
				MUZ-SF35					
				VEH - [E1]	VEH - [E2]	VEH - [ER2]	VEH - [ET1]	VEH - [ET2]	
1	E12 G11 337	REACTOR	L61	1	1	1	1	1	
2	E12 C34 306	THERMISTOR SET	RT61, RT62	1	1	1	1	1	DEFROST, DISCHARGE
3	E12 G10 309	AMBIENT TEMPERATURE THERMISTOR	RT65	1	1	1	1	1	
4	E12 C34 307	OUTDOOR HEAT EXCHANGER TEMPERATURE THERMISTOR	RT68	1	1	1	1	1	
5	E12 G10 490	R.V. COIL	21S4	1	1	1	1	1	
6	E12 735 241	FUSE HOLDER		1	1	1	1	1	
7	E12 735 382	FUSE	F61	1	1	1	1	1	T20AL250V
8	E12 G16 374	TERMINAL BLOCK	TB	1	1	1	1	1	5 P
	E12 T95 374								
9	E12 H23 451	INVERTER P.C. BOARD		1			1		Includes heat sink and RT64
	E12 P20 451				1	1		1	

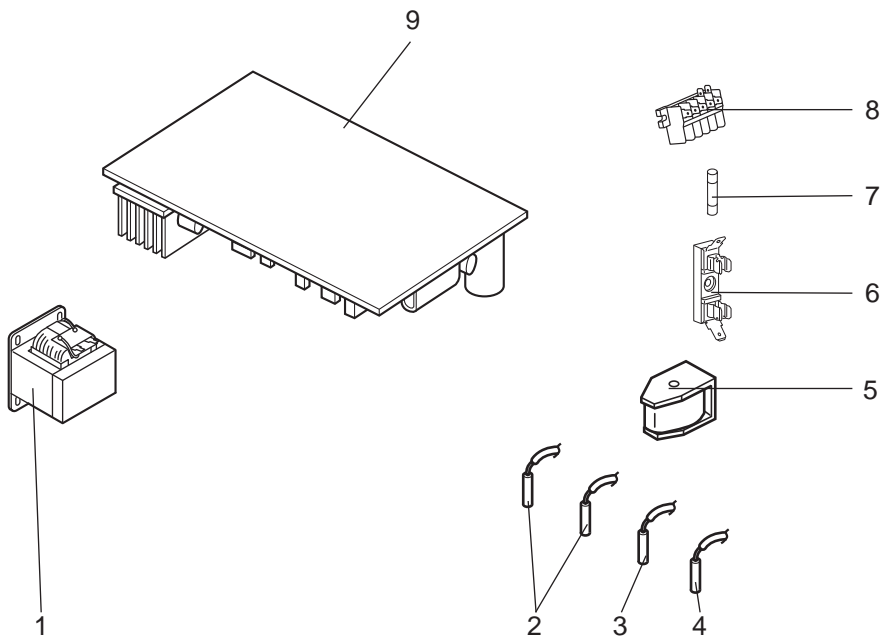
MUZ-SF35VEH - E3

1-15. OUTDOOR UNIT STRUCTURAL PARTS AND FUNCTIONAL PARTS



MUZ-SF35VEH - E3

1-16. OUTDOOR UNIT ELECTRICAL PARTS



## 1-15. OUTDOOR UNIT STRUCTURAL PARTS AND FUNCTIONAL PARTS

Part number that is circled is not shown in the illustration.

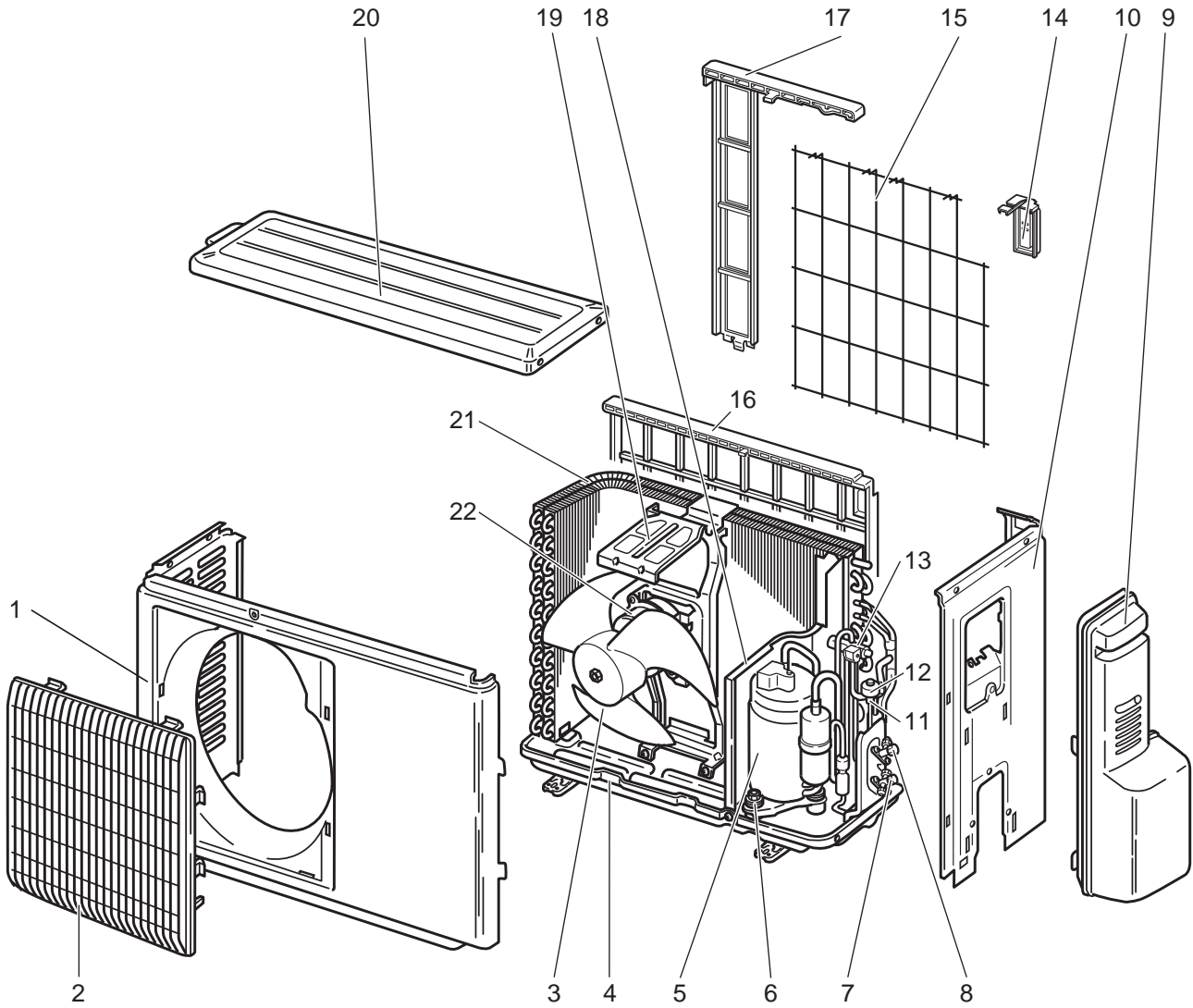
No.	Part No.	Part Name	Symbol in Wiring Diagram	Q'ty/unit		Remarks
				MUZ-SF35		
				VEH- <sup>E3</sup>		
1	E22 927 232	CABINET		1		
2	E22 927 521	GRILLE		1		
3	E22 927 501	PROPELLER FAN		1		
4	E22 D70 290	BASE		1		
5	E22 H19 900	COMPRESSOR	MC	1		KNB092FNDMC
6	E22 065 506	COMPRESSOR RUBBER SET		3		3 RUBBERS/SET
7	E22 D69 661	STOP VALVE (GAS)		1		ø9.52
8	E22 D58 662	STOP VALVE (LIQUID)		1		ø6.35
9	E22 927 245	SERVICE PANEL		1		
10	E22 G14 233	BACK PANEL		1		
11	E22 927 640	EXPANSION VALVE		1		
12	E22 G10 493	EXPANSION VALVE COIL	LEV	1		
13	E22 927 961	4-WAY VALVE		1		
14	E22 928 079	THERMO HOLDER		1		
15	E22 928 525	CONDENSER WIRE NET		1		
16	E22 928 523	CONDENSER NET		1		
17	E22 G13 293	SEPARATOR		1		
18	E22 927 515	MOTOR SUPPORT		1		
19	E22 927 297	TOP PANEL		1		
20	E22 H19 630	OUTDOOR HEAT EXCHANGER		1		
21	E22 P03 301	OUTDOOR FAN MOTOR	MF	1		RC0J50-□□
22	E22 C36 526	DEFROST HEATER	H	1		
23	E22 C36 381	HEATER PROTECTOR	26H	1		
24	E22 927 937	CAPILLARY TUBE		1		ø3.0×ø2.0×240

## 1-16. OUTDOOR UNIT ELECTRICAL PARTS

No.	Part No.	Part Name	Symbol in Wiring Diagram	Q'ty/unit		Remarks
				MUZ-SF35		
				VEH- <sup>E3</sup>		
1	E22 G11 337	REACTOR	L61	1		
2	E22 C34 306	THERMISTOR SET	RT61, RT62	1		DEFROST, DISCHARGE
3	E22 G10 309	AMBIENT TEMPERATURE THERMISTOR	RT65	1		
4	E22 C34 307	OUTDOOR HEAT EXCHANGER TEMPERATURE THERMISTOR	RT68	1		
5	E22 G10 490	R.V. COIL	21S4	1		
6	E22 735 241	FUSE HOLDER		1		
7	E22 735 382	FUSE	F61	1		T20AL250V
8	E22 T95 374	TERMINAL BLOCK	TB	1		5 P
9	E22 P20 451	INVERTER P.C. BOARD		1		Includes heat sink and RT64

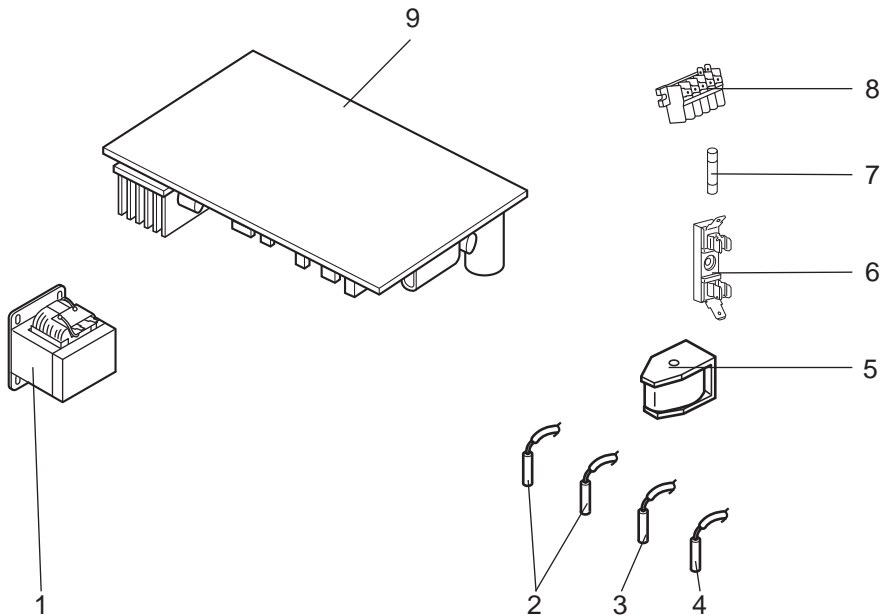
MUZ-SF42VE - E1, E2, E3, ER2, ER3, ET2, ET3, ET4

1-17. OUTDOOR UNIT STRUCTURAL PARTS AND FUNCTIONAL PARTS



MUZ-SF42VE - E1, E2, E3, ER2, ER3, ET2, ET3, ET4

1-18. OUTDOOR UNIT ELECTRICAL PARTS



## 1-17. OUTDOOR UNIT STRUCTURAL PARTS AND FUNCTIONAL PARTS

Part numbers that are circled are not shown in the illustration.

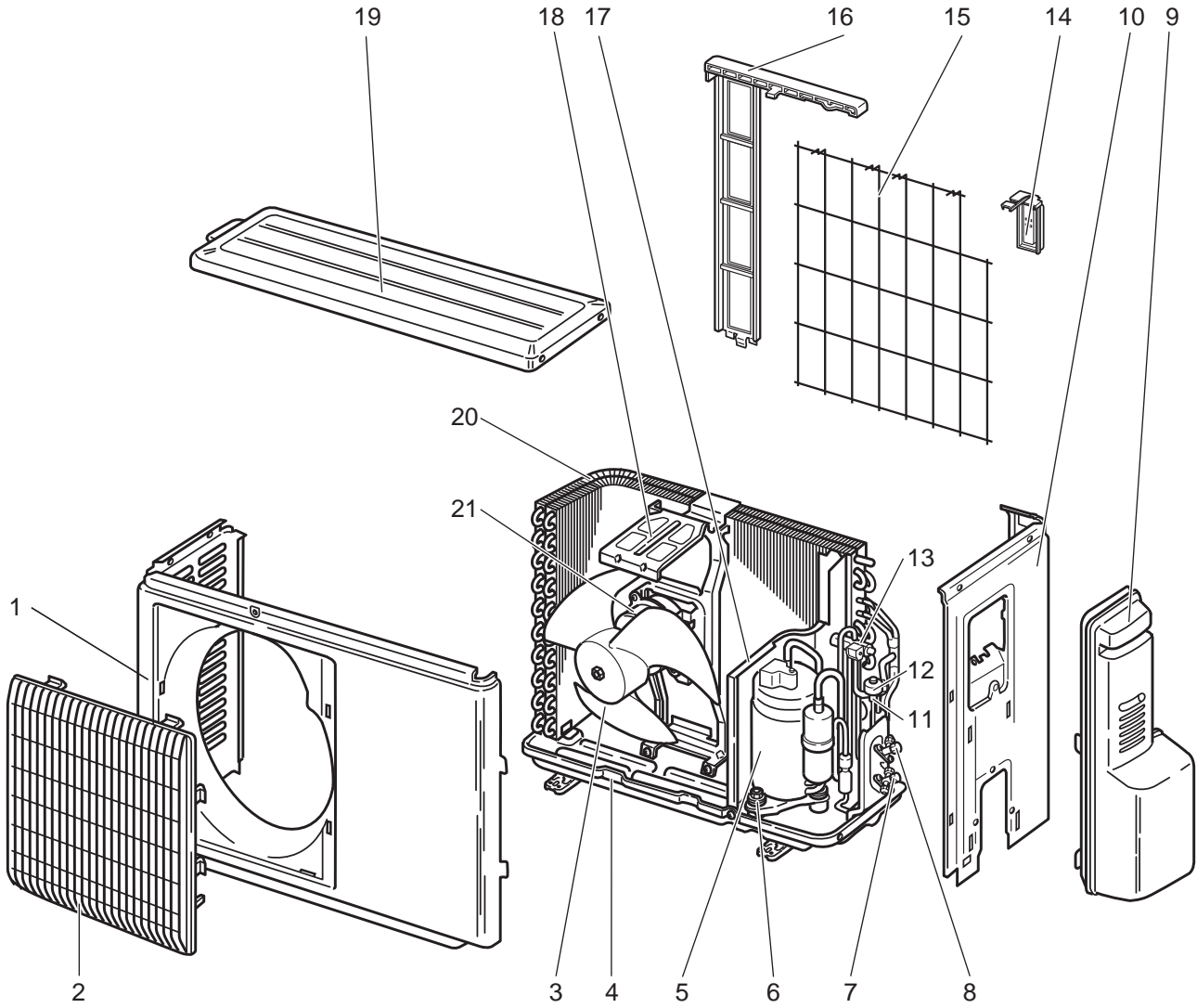
No.	Part No.	Part Name	Symbol in Wiring Diagram	Q'ty/unit									Remarks
				MUZ-SF42									
				VE - [E1]	VE - [E2]	VE - [E3]	VE - [ER2]	VE - [ER3]	VE - [ET2]	VE - [ET3]	VE - [ET4]		
1	E12 927 232	CABINET		1	1	1	1	1	1	1	1	1	
2	E12 927 521	GRILLE		1	1	1	1	1	1	1	1	1	
3	E12 927 501	PROPELLER FAN		1	1	1	1	1	1	1	1	1	
4	E12 D69 290	BASE		1	1	1	1	1	1	1	1	1	
5	E12 G12 900	COMPRESSOR	MC	1	1	1	1	1	1	1	1	1	SNB130FGAMT
6	E12 C34 506	COMPRESSOR RUBBER SET		3	3	3	3	3	3	3	3	3	3 RUBBERS/SET
7	E12 927 661 E12 T95 661	STOP VALVE (GAS)		1	1	1	1	1	1	1	1	1	ø9.52
8	E12 927 662 E12 T95 662	STOP VALVE (LIQUID)		1	1	1	1	1	1	1	1	1	
9	E12 927 245	SERVICE PANEL		1	1	1	1	1	1	1	1	1	
10	E12 G15 233	BACK PANEL		1	1	1	1	1	1	1	1	1	
11	E12 A54 640	EXPANSION VALVE		1	1	1	1	1	1	1	1	1	
12	E12 G10 493	EXPANSION VALVE COIL	LEV	1	1	1	1	1	1	1	1	1	
13	E12 927 961	4-WAY VALVE		1	1	1	1	1	1	1	1	1	
14	E12 930 079	THERMO HOLDER			1	1	1	1	1	1	1	1	
15	E12 930 525	CONDENSER WIRE NET			1	1	1	1	1	1	1	1	
16	E12 929 523	CONDENSER NET		1									
17	E12 930 523	CONDENSER NET			1	1	1	1	1	1	1	1	
18	E12 G11 293	SEPARATOR		1	1	1	1	1	1	1	1	1	
19	E12 929 515	MOTOR SUPPORT		1	1	1	1	1	1	1	1	1	
20	E12 927 297	TOP PANEL		1	1	1	1	1	1	1	1	1	
21	E12 G12 630	OUTDOOR HEAT EXCHANGER		1	1	1	1	1	1	1	1	1	
22	E12 G11 301 E12 P03 301	OUTDOOR FAN MOTOR	MF	1	1		1		1				RC0J50-□□
						1		1		1	1		RC0J50-□□
23	E12 927 937	CAPILLARY TUBE		1	1	1	1	1	1	1	1	1	ø3.0xø2.0x240
24	E12 735 936	CAPILLARY TUBE		2	2	2	2	2	2	2	2	2	ø3.0xø1.8x600
25	E12 838 704	DRAIN SOCKET		1	1	1	1	1	1	1	1	1	

## 1-18. OUTDOOR UNIT ELECTRICAL PARTS

No.	Part No.	Part Name	Symbol in Wiring Diagram	Q'ty/unit									Remarks
				MUZ-SF42									
				VE - [E1]	VE - [E2]	VE - [E3]	VE - [ER2]	VE - [ER3]	VE - [ET2]	VE - [ET3]	VE - [ET4]		
1	E12 G11 337	REACTOR	L61	1	1	1	1	1	1	1	1	1	
2	E12 C34 306	THERMISTOR SET	RT61, RT62	1	1	1	1	1	1	1	1	1	DEFROST, DISCHARGE
3	E12 G10 309	AMBIENT TEMPERATURE THERMISTOR	RT65	1	1	1	1	1	1	1	1	1	
4	E12 C34 307	OUTDOOR HEAT EXCHANGER TEMPERATURE THERMISTOR	RT68	1	1	1	1	1	1	1	1	1	
5	E12 G10 490	R.V. COIL	21S4	1	1	1	1	1	1	1	1	1	
6	E12 735 241	FUSE HOLDER		1	1	1	1	1	1	1	1	1	
7	E12 735 382	FUSE	F61	1	1	1	1	1	1	1	1	1	T20AL250V
8	E12 G16 374 E12 T95 374	TERMINAL BLOCK	TB	1	1	1	1	1	1	1	1	1	5 P
9	E12 H20 451 E12 P15 451 E12 T81 451	INVERTER P.C. BOARD		1	1		1		1			1	

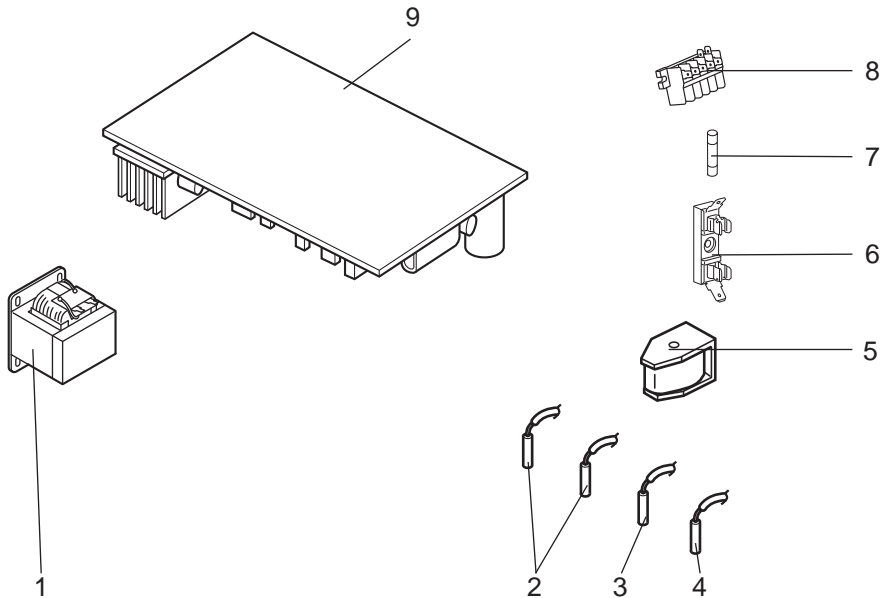
MUZ-SF42VE - E4, ER4

1-19. OUTDOOR UNIT STRUCTURAL PARTS AND FUNCTIONAL PARTS



MUZ-SF42VE - E4, ER4

1-20. OUTDOOR UNIT ELECTRICAL PARTS



## 1-19. OUTDOOR UNIT STRUCTURAL PARTS AND FUNCTIONAL PARTS

Part numbers that are circled are not shown in the illustration.

No.	Part No.	Part Name	Symbol in Wiring Diagram	Q'ty/unit		Remarks
				MUZ-SF42		
				VE- [E4]	VE- [ER4]	
1	E22 927 232	CABINET		1	1	
2	E22 927 521	GRILLE		1	1	
3	E22 927 501	PROPELLER FAN		1	1	
4	E22 D69 290	BASE		1	1	
5	E22 G12 900	COMPRESSOR	MC	1	1	SNB130FGAMT
6	E22 C34 506	COMPRESSOR RUBBER SET		3	3	3 RUBBERS/SET
7	E22 T95 661	STOP VALVE (GAS)		1	1	ø9.52
8	E22 T95 662	STOP VALVE (LIQUID)		1	1	ø6.35
9	E22 927 245	SERVICE PANEL		1	1	
10	E22 G15 233	BACK PANEL		1	1	
11	E22 A54 640	EXPANSION VALVE		1	1	
12	E22 G10 493	EXPANSION VALVE COIL	LEV	1	1	
13	E22 927 961	4-WAY VALVE		1	1	
14	E22 930 079	THERMO HOLDER		1	1	
15	E22 930 525	CONDENSER WIRE NET		1	1	
16	E22 930 523	CONDENSER NET		1	1	
17	E22 G11 293	SEPARATOR		1	1	
18	E22 929 515	MOTOR SUPPORT		1	1	
19	E22 927 297	TOP PANEL		1	1	
20	E22 G12 630	OUTDOOR HEAT EXCHANGER		1	1	
21	E22 P03 301	OUTDOOR FAN MOTOR	MF	1	1	RC0J50-□□
②②	E22 927 937	CAPILLARY TUBE		1	1	ø3.0×ø2.0×240
②③	E22 735 936	CAPILLARY TUBE		2	2	ø3.0×ø1.8×600
②④	E22 838 704	DRAIN SOCKET		1	1	

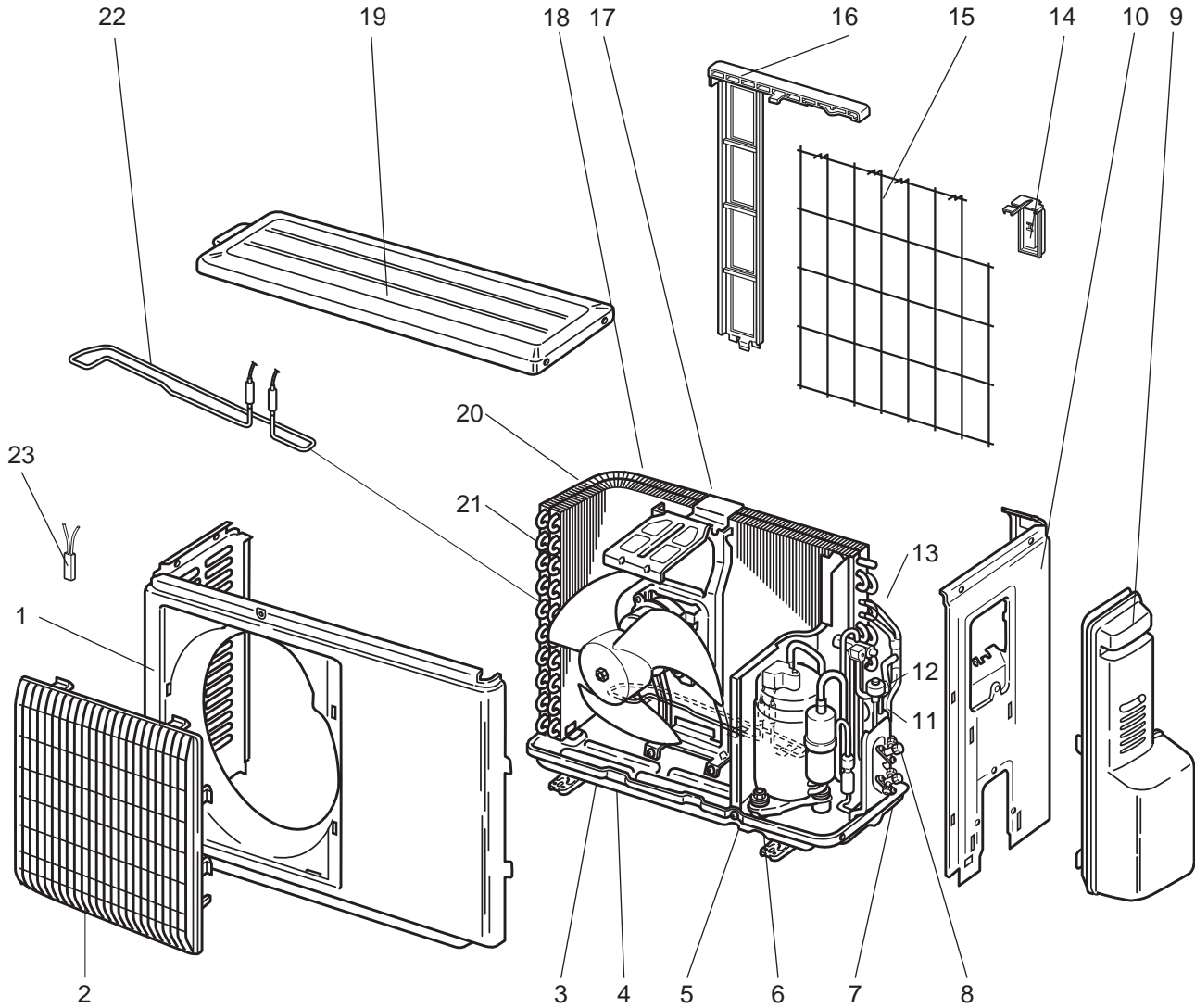
## 1-20. OUTDOOR UNIT ELECTRICAL PARTS

No.	Part No.	Part Name	Symbol in Wiring Diagram	Q'ty/unit		Remarks
				MUZ-SF42		
				VE- [E4]	VE- [ER4]	
1	E22 G11 337	REACTOR	L61	1	1	
2	E22 C34 306	THERMISTOR SET	RT61, RT62	1	1	DEFROST, DISCHARGE
3	E22 G10 309	AMBIENT TEMPERATURE THERMISTOR	RT65	1	1	
4	E22 C34 307	OUTDOOR HEAT EXCHANGER TEMPERATURE THERMISTOR	RT68	1	1	
5	E22 G10 490	R.V. COIL	21S4	1	1	
6	E22 735 241	FUSE HOLDER		1	1	
7	E22 735 382	FUSE	F61	1	1	T20AL250V
8	E22 T95 374	TERMINAL BLOCK	TB	1	1	5 P
9	E22 T81 451	INVERTER P.C. BOARD		1	1	Includes heat sink and RT64



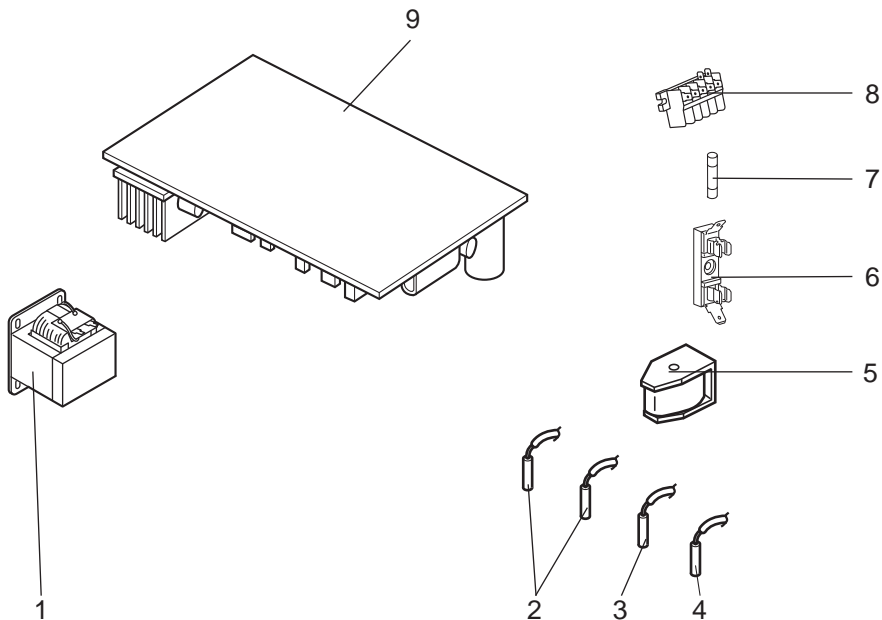
MUZ-SF42VEH - E1, E2, ER2, ET1, ET2

1-21. OUTDOOR UNIT STRUCTURAL PARTS AND FUNCTIONAL PARTS



MUZ-SF42VEH - E1, E2, ER2, ET1, ET2

1-22. OUTDOOR UNIT ELECTRICAL PARTS





## 1-21. OUTDOOR UNIT STRUCTURAL PARTS AND FUNCTIONAL PARTS

Part numbers that are circled are not shown in the illustration.

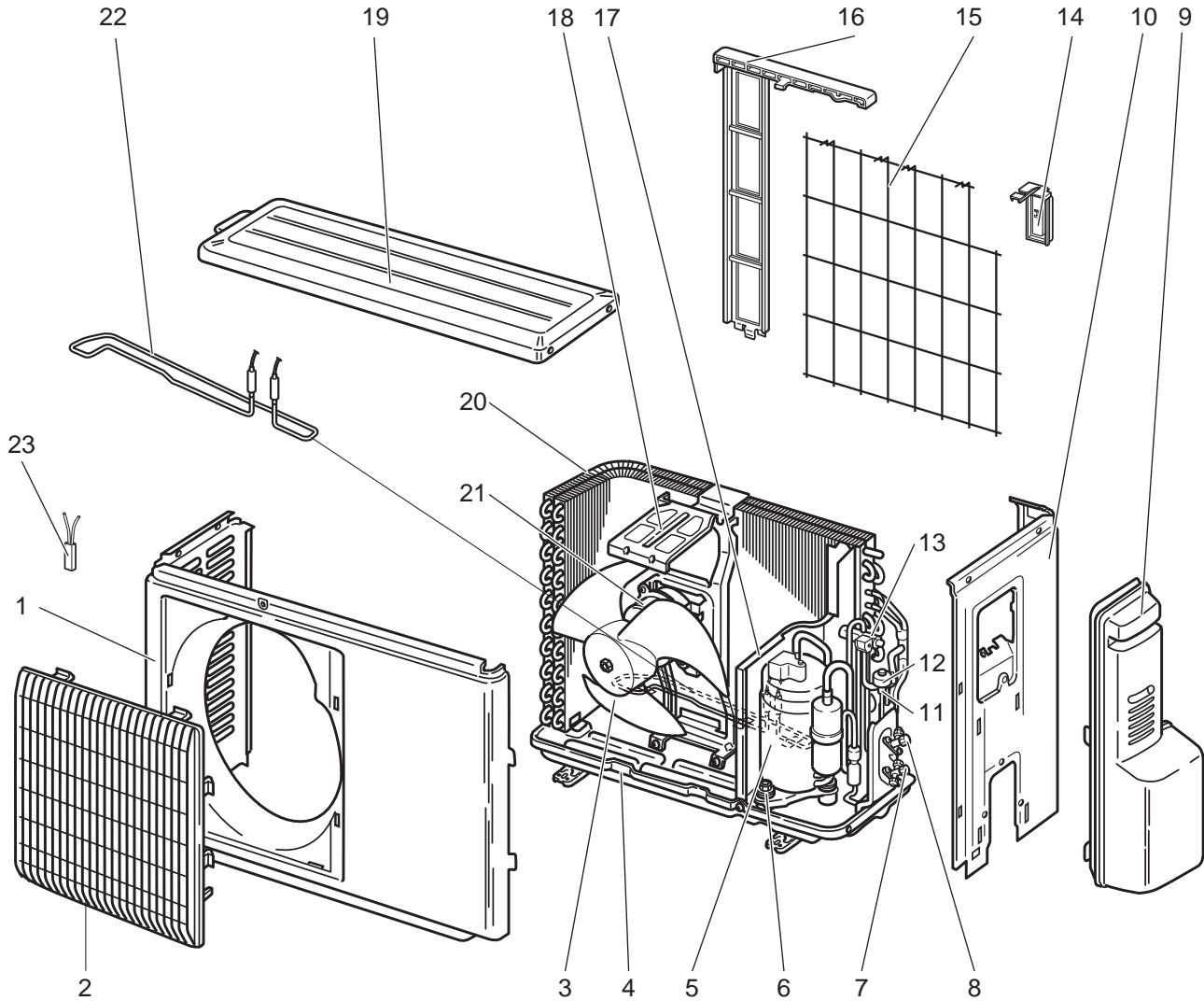
No.	Part No.	Part Name	Symbol in Wiring Diagram	Q'ty/unit					Remarks
				MUZ-SF42					
				VEH - [E1]	VEH - [E2]	VEH - [ER2]	VEH - [ET1]	VEH - [ET2]	
1	E12 927 232	CABINET		1	1	1	1	1	
2	E12 927 521	GRILLE		1	1	1	1	1	
3	E12 927 501	PROPELLER FAN		1	1	1	1	1	
4	E12 D70 290	BASE		1	1	1	1	1	
5	E12 G12 900	COMPRESSOR	MC	1	1	1	1	1	SNB130FGAMT
6	E12 C34 506	COMPRESSOR RUBBER SET		3	3	3	3	3	3 RUBBERS/SET
7	E12 927 661	STOP VALVE (GAS)		1	1	1	1	1	ø9.52
8	E12 927 662	STOP VALVE (LIQUID)		1	1	1	1	1	ø6.35
9	E12 927 245	SERVICE PANEL		1	1	1	1	1	
10	E12 H24 233	BACK PANEL		1	1	1	1	1	
11	E12 A54 640	EXPANSION VALVE		1	1	1	1	1	
12	E12 G10 493	EXPANSION VALVE COIL	LEV	1	1	1	1	1	
13	E12 927 961	4-WAY VALVE		1	1	1	1	1	
14	E12 930 079	THERMO HOLDER		1	1	1	1	1	
15	E12 930 525	CONDENSER WIRE NET		1	1	1	1	1	
16	E12 930 523	CONDENSER NET		1	1	1	1	1	
17	E12 G14 293	SEPARATOR		1	1	1	1	1	
18	E12 929 515	MOTOR SUPPORT		1	1	1	1	1	
19	E12 927 297	TOP PANEL		1	1	1	1	1	
20	E12 G12 630	OUTDOOR HEAT EXCHANGER		1	1	1	1	1	
21	E12 G11 301	OUTDOOR FAN MOTOR	MF	1			1		RC0J50-□□
	E12 P03 301				1	1		1	RC0J50-□□
22	E12 C36 526	DEFROST HEATER	H	1	1	1	1	1	
23	E12 C36 381	HEATER PROTECTOR	26H	1	1	1	1	1	
②④	E12 927 937	CAPILLARY TUBE		1	1	1	1	1	ø3.0xø2.0x240
②⑤	E12 735 936	CAPILLARY TUBE		2	2	2	2	2	ø3.0xø1.8x600

## 1-22. OUTDOOR UNIT ELECTRICAL PARTS

No.	Part No.	Part Name	Symbol in Wiring Diagram	Q'ty/unit					Remarks
				MUZ-SF42					
				VEH - [E1]	VEH - [E2]	VEH - [ER2]	VEH - [ET1]	VEH - [ET2]	
1	E12 G11 337	REACTOR	L61	1	1	1	1	1	
2	E12 C34 306	THERMISTOR SET	RT61, RT62	1	1	1	1	1	DEFROST, DISCHARGE
3	E12 G10 309	AMBIENT TEMPERATURE THERMISTOR	RT65	1	1	1	1	1	
4	E12 C34 307	OUTDOOR HEAT EXCHANGER TEMPERATURE THERMISTOR	RT68	1	1	1	1	1	
5	E12 G10 490	R.V. COIL	21S4	1	1	1	1	1	
6	E12 735 241	FUSE HOLDER		1	1	1	1	1	
7	E12 735 382	FUSE	F61	1	1	1	1	1	T20AL250V
8	E12 G16 374	TERMINAL BLOCK	TB	1	1	1	1	1	5 P
9	E12 H24 451	INVERTER P.C. BOARD		1			1		Includes heat sink and RT64
	E12 P21 451				1	1		1	

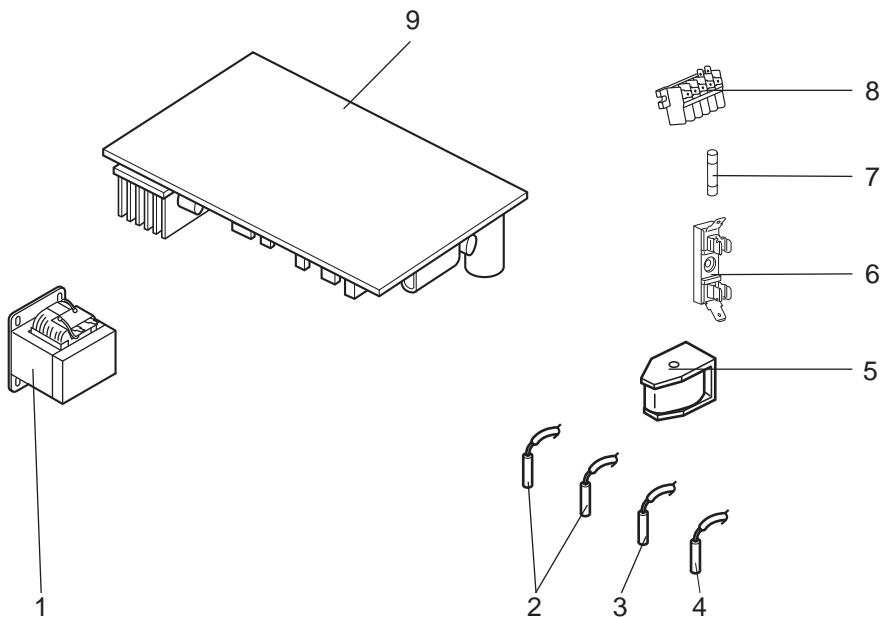
MUZ-SF42VEH - E3

1-23. OUTDOOR UNIT STRUCTURAL PARTS AND FUNCTIONAL PARTS



MUZ-SF42VEH - E3

1-24. OUTDOOR UNIT ELECTRICAL PARTS



## 1-23. OUTDOOR UNIT STRUCTURAL PARTS AND FUNCTIONAL PARTS

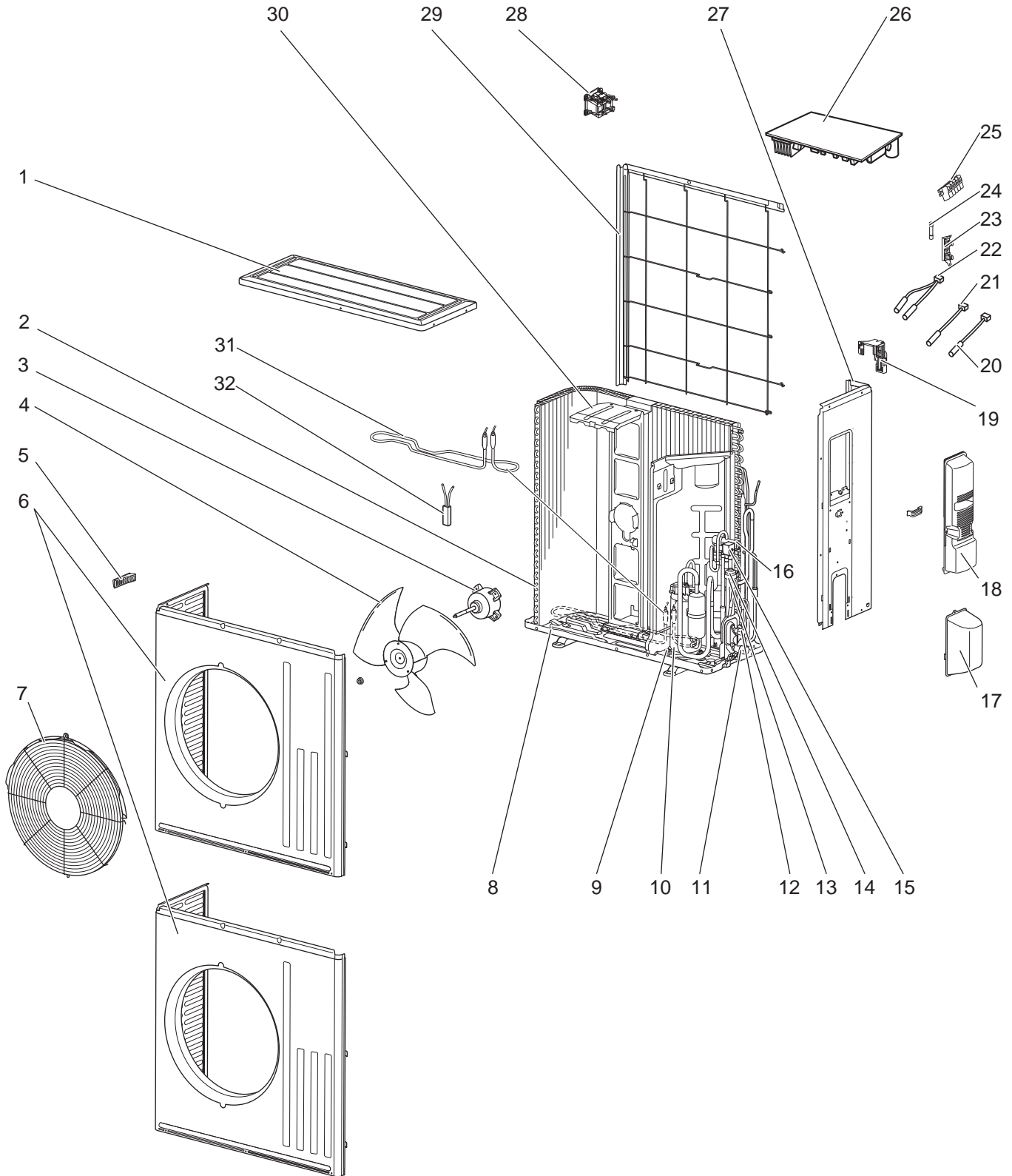
Part numbers that are circled are not shown in the illustration.

No.	Part No.	Part Name	Symbol in Wiring Diagram	Q'ty/unit		Remarks
				MUZ-SF42	VEH- E3	
1	E22 927 232	CABINET			1	
2	E22 927 521	GRILLE			1	
3	E22 927 501	PROPELLER FAN			1	
4	E22 D70 290	BASE			1	
5	E22 G12 900	COMPRESSOR	MC		1	SNB130FGAMT
6	E22 C34 506	COMPRESSOR RUBBER SET			3	3 RUBBERS/SET
7	E22 T95 661	STOP VALVE (GAS)			1	ø9.52
8	E22 T95 662	STOP VALVE (LIQUID)			1	ø6.35
9	E22 927 245	SERVICE PANEL			1	
10	E22 H24 233	BACK PANEL			1	
11	E22 A54 640	EXPANSION VALVE			1	
12	E22 G10 493	EXPANSION VALVE COIL	LEV		1	
13	E22 927 961	4-WAY VALVE			1	
14	E22 930 079	THERMO HOLDER			1	
15	E22 930 525	CONDENSER WIRE NET			1	
16	E22 930 523	CONDENSER NET			1	
17	E22 G14 293	SEPARATOR			1	
18	E22 929 515	MOTOR SUPPORT			1	
19	E22 927 297	TOP PANEL			1	
20	E22 G12 630	OUTDOOR HEAT EXCHANGER			1	
21	E22 P03 301	OUTDOOR FAN MOTOR	MF		1	RC0J50-□□
22	E22 C36 526	DEFROST HEATER	H		1	
23	E22 C36 381	HEATER PROTECTOR	26H		1	
24	E22 927 937	CAPILLARY TUBE			1	ø3.0×ø2.0×240
25	E22 735 936	CAPILLARY TUBE			2	ø3.0×ø1.8×600

## 1-24. OUTDOOR UNIT ELECTRICAL PARTS

No.	Part No.	Part Name	Symbol in Wiring Diagram	Q'ty/unit		Remarks
				MUZ-SF42	VEH- E3	
1	E22 G11 337	REACTOR	L61		1	
2	E22 C34 306	THERMISTOR SET	RT61, RT62		1	DEFROST, DISCHARGE
3	E22 G10 309	AMBIENT TEMPERATURE THERMISTOR	RT65		1	
4	E22 C34 307	OUTDOOR HEAT EXCHANGER TEMPERATURE THERMISTOR	RT68		1	
5	E22 G10 490	R.V. COIL	21S4		1	
6	E22 735 241	FUSE HOLDER			1	
7	E22 735 382	FUSE	F61		1	T20AL250V
8	E22 T95 374	TERMINAL BLOCK	TB		1	5 P
9	E22 T80 451	INVERTER P.C. BOARD			1	Includes heat sink and RT64

**MUZ-SF50VE MUZ-SF50VEH**  
**1-25. OUTDOOR UNIT STRUCTURAL PARTS, ELECTRICAL PARTS AND FUNCTIONAL PARTS**

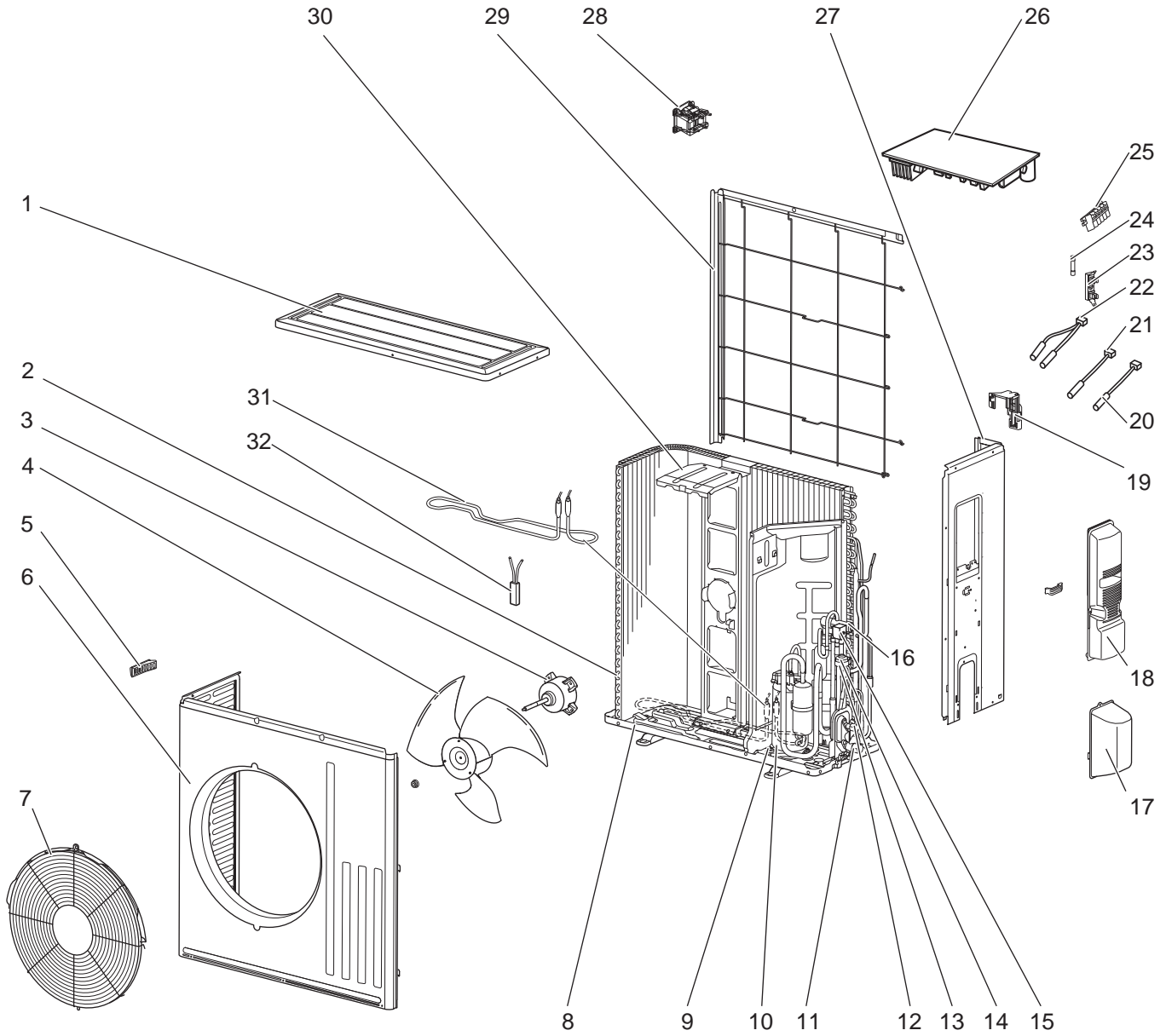


## 1-25. OUTDOOR UNIT STRUCTURAL PARTS, ELECTRICAL PARTS AND FUNCTIONAL PARTS

Part numbers that are circled are not shown in the illustration.

No.	Part No.	Part Name	Symbol in Wiring Diagram	Q'ty/unit						Remarks
				MUZ-SF50						
				VE - [E1]	VE - [ER1]	VE - [ET1]	VE - [ET2]	VEH - [E1]	VEH - [ET1]	
1	E12 F28 297	TOP PANEL		1	1	1		1	1	
	E12 L87 297					1				
2	E12 H21 630	OUTDOOR HEAT EXCHANGER		1	1	1	1	1	1	
3	E12 G16 301	OUTDOOR FAN MOTOR	MF	1	1	1	1	1	1	RC0J60-□□
4	E12 F28 501	PROPELLER FAN		1	1	1	1	1	1	
5	E12 817 009	HANDLE		1	1	1	1	1	1	
6	E12 F28 232	CABINET		1	1	1		1	1	
	E12 N87 232					1				
7	E12 F73 521	FAN GUARD		1	1	1	1	1	1	Includes ice guard
8	E12 F28 290	BASE		1	1	1				
	E12 H25 290					1	1	1		
9	E12 C34 506	COMPRESSOR RUBBER SET		3	3	3	3	3	3	3 RUBBERS/SET
10	E12 F28 900	COMPRESSOR	MC	1	1	1	1	1	1	SNB130FGBMT
11	E12 G16 661	STOP VALVE (GAS)		1	1	1	1	1	1	ø12.7
12	E12 G16 662	STOP VALVE (LIQUID)		1	1	1	1	1	1	ø6.35
13	E12 851 640	EXPANSION VALVE		1	1	1	1	1	1	
14	E12 F28 493	EXPANSION VALVE COIL	LEV	1	1	1	1	1	1	
15	E12 G16 490	R.V. COIL	21S4	1	1	1	1	1	1	
16	E12 C18 961	4-WAY VALVE		1	1	1	1	1	1	
17	E12 F28 650	VALVE COVER		1	1	1	1	1	1	
18	E12 G16 245	SERVICE PANEL		1	1	1	1	1	1	
19	E12 F28 079	THERMO HOLDER		1	1	1	1	1	1	
20	E12 G16 309	AMBIENT TEMPERATURE THERMISTOR	RT65	1	1	1	1	1	1	
21	E12 G16 307	OUTDOOR HEAT EXCHANGER TEMPERATURE THERMISTOR	RT68	1	1	1	1	1	1	
22	E12 G16 308	THERMISTOR SET	RT61, RT62	1	1	1	1	1	1	DEFROST, DISCHARGE
23	E12 735 241	FUSE HOLDER		1	1	1	1	1	1	
24	E12 735 382	FUSE	F61	1	1	1	1	1	1	T20AL250V
25	E12 G16 374	TERMINAL BLOCK	TB	1	1	1		1	1	5 P
	E12 T95 374					1				
26	E12 H21 451	INVERTER P.C. BOARD		1	1	1				Includes heat sink and RT64
	E12 P45 451					1				
	E12 H25 451						1	1		
27	E12 F28 233	BACK PANEL (OUT)		1	1	1	1	1	1	
28	E12 H21 337	REACTOR	L61	1	1	1	1	1	1	
29	E12 F28 523	CONDENSER NET		1	1			1		
	E12 L87 523					1	1		1	
30	E12 F28 515	MOTOR SUPPORT		1	1	1	1	1	1	
31	E12 J52 526	DEFROST HEATER	H					1	1	
32	E12 J52 381	HEATER PROTECTOR	26H					1	1	
33	E12 262 936	CAPILLARY TUBE		1	1	1	1	1	1	ø4.0 × ø2.4 × 200
34	E12 838 936	CAPILLARY TUBE		4	4	4	4	4	4	ø3.0 × ø2.0 × 200
35	E12 527 936	CAPILLARY TUBE		1	1	1	1	1	1	ø4.0 × ø2.4 × 100
36	E12 F28 704	DRAIN SOCKET		1	1	1	1			

**MUZ-SF50VE MUZ-SF50VEH**  
**1-26. OUTDOOR UNIT STRUCTURAL PARTS, ELECTRICAL PARTS AND FUNCTIONAL PARTS**



## 1-26. OUTDOOR UNIT STRUCTURAL PARTS, ELECTRICAL PARTS AND FUNCTIONAL PARTS

Part numbers that are circled are not shown in the illustration.

No.	Part No.	Part Name	Symbol in Wiring Diagram	Q'ty/unit			Remarks
				MUZ-SF50			
				VE- [E2]	VE- [ER2]	VEH- [E2]	
1	E22 L87 297	TOP PANEL		1	1	1	
2	E22 H21 630	OUTDOOR HEAT EXCHANGER		1	1	1	
3	E22 G16 301	OUTDOOR FAN MOTOR	MF	1	1	1	RC0J60-□□
4	E22 F28 501	PROPELLER FAN		1	1	1	
5	E22 817 009	HANDLE		1	1	1	
6	E22 N87 232	CABINET		1	1	1	
7	E22 F73 521	FAN GUARD		1	1	1	Includes ice guard
8	E22 H25 290	BASE		1	1	1	
9	E22 C34 506	COMPRESSOR RUBBER SET		3	3	3	3 RUBBERS/SET
10	E22 F28 900	COMPRESSOR	MC	1	1	1	SNB130FGBMT
11	E22 G16 661	STOP VALVE (GAS)		1	1	1	ø12.7
12	E22 G16 662	STOP VALVE (LIQUID)		1	1	1	ø6.35
13	E22 851 640	EXPANSION VALVE		1	1	1	
14	E22 F28 493	EXPANSION VALVE COIL	LEV	1	1	1	
15	E22 G16 490	R.V. COIL	21S4	1	1	1	
16	E22 C18 961	4-WAY VALVE		1	1	1	
17	E22 F28 650	VALVE COVER		1	1	1	
18	E22 G16 245	SERVICE PANEL		1	1	1	
19	E22 F28 079	THERMO HOLDER		1	1	1	
20	E22 G16 309	AMBIENT TEMPERATURE THERMISTOR	RT65	1	1	1	
21	E22 G16 307	OUTDOOR HEAT EXCHANGER TEMPERATURE THERMISTOR	RT68	1	1	1	
22	E22 G16 308	THERMISTOR SET	RT61, RT62	1	1	1	DEFROST, DISCHARGE
23	E22 735 241	FUSE HOLDER		1	1	1	
24	E22 735 382	FUSE	F61	1	1	1	T20AL250V
25	E22 T95 374	TERMINAL BLOCK	TB	1	1	1	5 P
26	E22 P45 451	INVERTER P.C. BOARD		1	1		Includes heat sink and RT64
	E22 P49 451					1	
27	E22 F28 233	BACK PANEL (OUT)		1	1	1	
28	E22 H21 337	REACTOR	L61	1	1	1	
29	E22 L87 523	CONDENSER NET		1	1	1	
30	E22 F28 515	MOTOR SUPPORT		1	1	1	
31	E22 J52 526	DEFROST HEATER	H			1	
32	E22 J52 381	HEATER PROTECTOR	26H			1	
33	E22 262 936	CAPILLARY TUBE		1	1	1	ø4.0 × ø2.4 × 200
34	E22 838 936	CAPILLARY TUBE		4	4	4	ø3.0 × ø2.0 × 200
35	E22 527 936	CAPILLARY TUBE		1	1	1	ø4.0 × ø2.4 × 100
36	E22 F28 704	DRAIN SOCKET		1	1		

# **MITSUBISHI ELECTRIC CORPORATION**

HEAD OFFICE: TOKYO BUILDING, 2-7-3, MARUNOUCHI, CHIYODA-KU, TOKYO 100-8310, JAPAN

© Copyright 2012 MITSUBISHI ELECTRIC CORPORATION

Issued: Oct. 2019. No. OBB629 REVISED EDITION-G

Issued: May 2018. No. OBB629 REVISED EDITION-F

Issued: Jan. 2016. No. OBB629 REVISED EDITION-E

Issued: Oct. 2014. No. OBB629 REVISED EDITION-D

Issued: Aug. 2014. No. OBB629 REVISED EDITION-C

Issued: Dec. 2013. No. OBB629 REVISED EDITION-B

Issued: Aug. 2013. No. OBB629 REVISED EDITION-A

Published: Nov. 2012. No. OBB629

Made in Japan

Specifications are subject to change without notice.