

## OUTDOOR UNIT

**No. OBB823  
REVISED EDITION-C**

# PARTS CATALOG

### Models

**MUZ-HR25VF** - **E1**, **ER1**, **ET1**

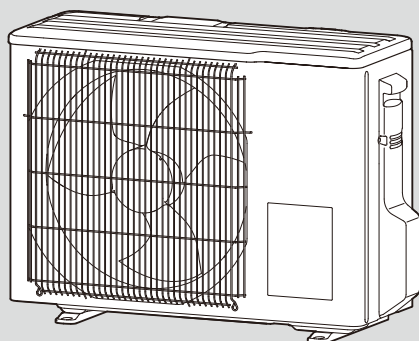
**MUZ-HR35VF** - **E1**, **ER1**, **ET1**

**MUZ-HR42VF** - **E1**, **ER1**, **ET1**

**MUZ-HR50VF** - **E1**, **ER1**, **ET1**

**MUZ-HR60VF** - **E1**, **ER1**, **ET1**

**MUZ-HR71VF** - **E1**, **ER1**, **ET1**



**MUZ-HR42VF  
MUZ-HR50VF**

### CONTENTS

1. SERVICE PARTS LIST..... 2

**SERVICE MANUAL (OBH823)**

**Revision A:**

• Some descriptions have been modified.

**Revision B:**

• MUZ-HR60/71VF- [E1], [ET1] have been added.

**Revision C:**

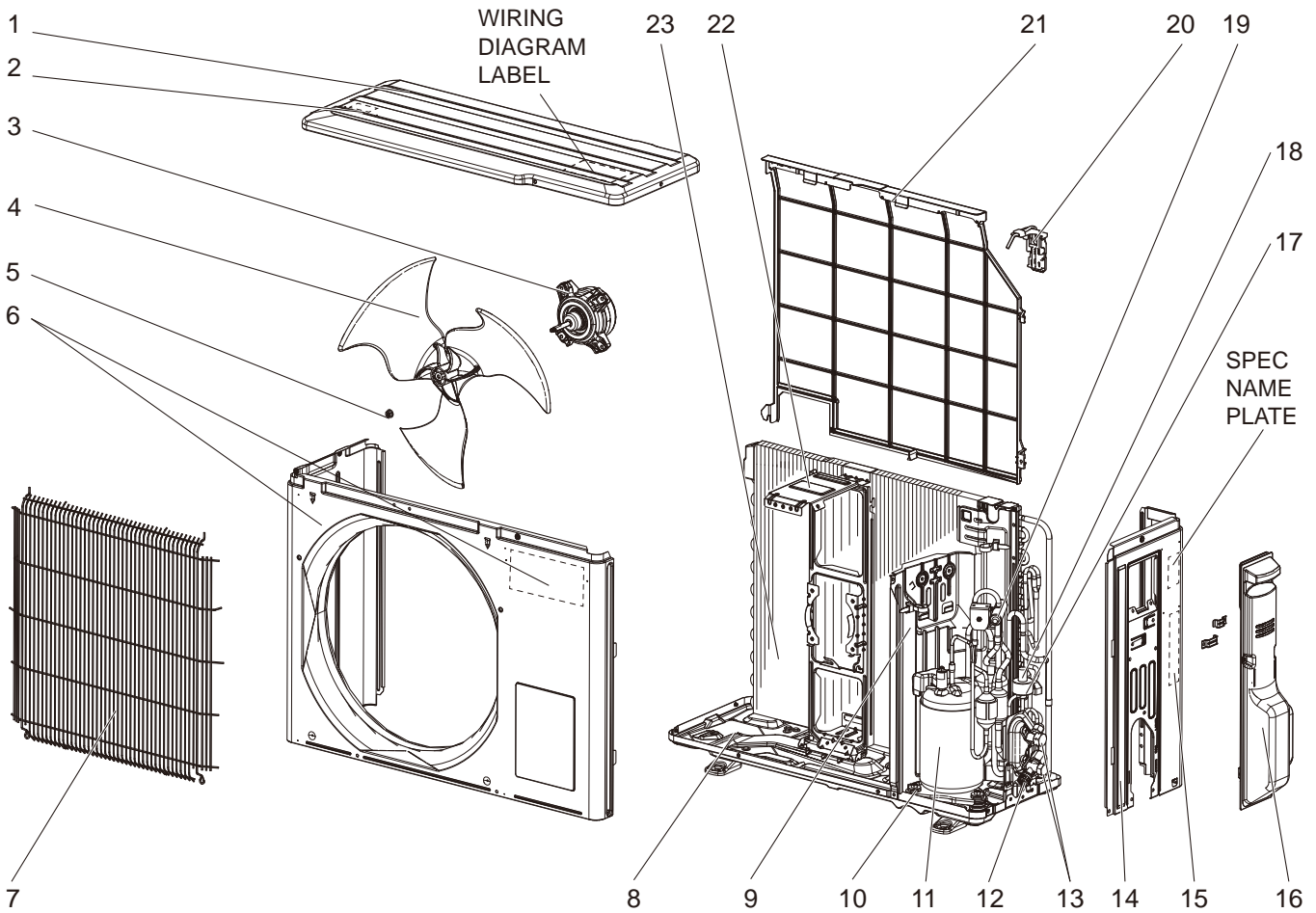
• MUZ-HR60/71VF- [ER1] have been added.

**1**

**SERVICE PARTS LIST**

**MUZ-HR25VF**

**1-1. OUTDOOR UNIT STRUCTURAL PARTS AND FUNCTIONAL PARTS**



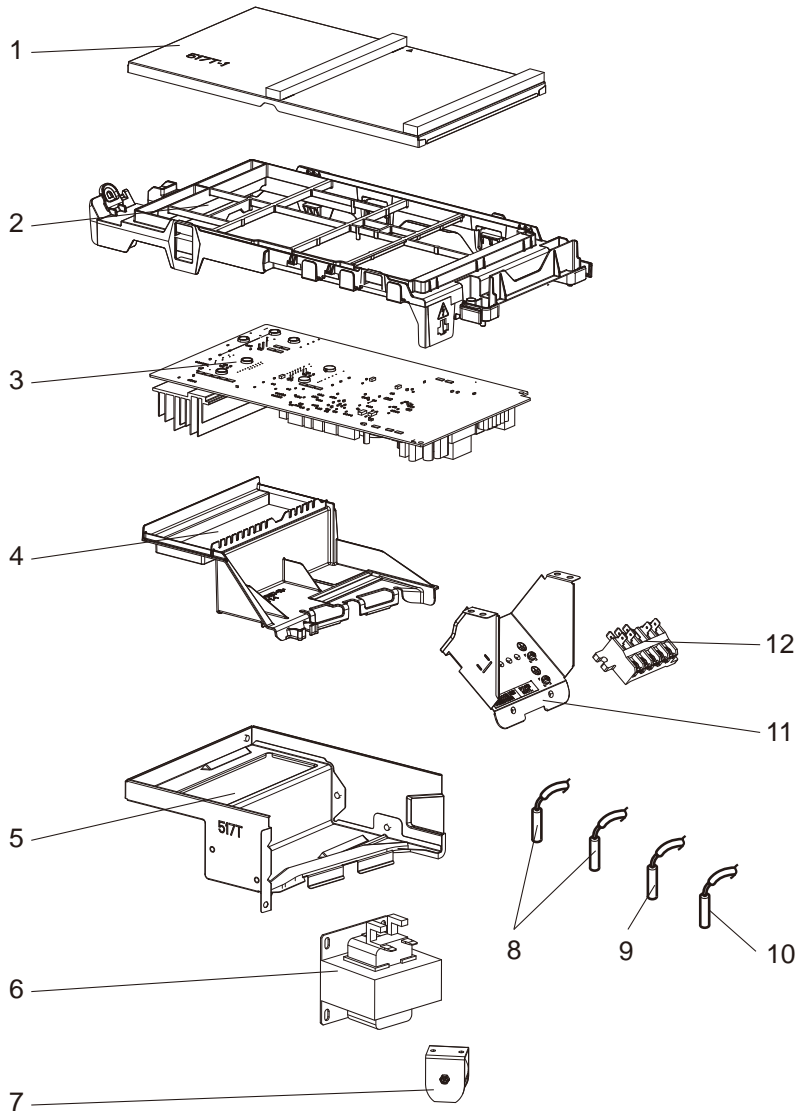
## 1-1. OUTDOOR UNIT STRUCTURAL PARTS AND FUNCTIONAL PARTS

Part number that is circled is not shown in the illustration.

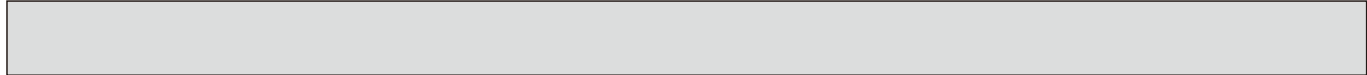
No.	Part No.	Part Name	Symbol in Wiring Diagram	Q'ty/unit			Remarks
				MUZ-HR			
				25VF- <u>E1</u>	25VF- <u>ER1</u>	25VF- <u>ET1</u>	
1	G2W 002 057	TOP PANEL ASSEMBLY		1	1	1	Not including No. 2 and wiring diagram
2	-	LABEL		1	1	1	JG79R840H02
3	G2W 002 350	OUTDOOR FAN MOTOR	MF	1	1	1	RC0J55-□□
4	G2W 001 550	PROPELLER FAN		1	1	1	
5	G2W 001 753	PROPELLER FAN NUT		1	1	1	
6	G2W 005 050	CABINET		1	1	1	Includes brand label
7	G2W 002 063	GRILLE		1	1	1	
8	G2W 003 055	BASE		1	1	1	
9	G2W 005 150	SEPARATOR		1	1	1	
10	G2W 001 773	COMPRESSOR RUBBER SET		3	3	3	3 RUBBERS/SET
11	G2W 003 650	COMPRESSOR	MC	1	1	1	KVB059FTMMC
12	-	PORT CAP		1	1	1	DQ26T763H04
13	G2W 002 655	STOP VALVE ASSEMBLY		1	1	1	Gas: ø9.52 Liquid: ø6.35 Includes pipes
14	G2W 002 060	BACK PANEL		1	1	1	Not including SPEC NAME PLATE or No. 15
15	-	LABEL		1	1		DG79T490H01
	-					1	DG79T490H02
16	G2W 002 053	SERVICE PANEL		1	1	1	
17	G2W 002 362	EXPANSION VALVE COIL	LEV	1	1	1	
18	G2W 002 668	EXPANSION VALVE ASSEMBLY		1	1	1	Includes capillary tube ø3.0 x ø2.0 x 260
19	G2W 002 665	4-WAY VALVE		1	1	1	
20	-	THERMO HOLDER (AMBIENT)		1	1	1	JQ25A222G01
21	G2W 003 065	CONDENSER WIRE NET		1	1	1	
22	G2W 003 154	MOTOR SUPPORT		1	1	1	
23	G2W 003 660	OUTDOOR HEAT EXCHANGER		1	1	1	
②4	G2W 003 371	COMPRESSOR LEAD WIRE ASSEMBLY		1	1	1	

# MUZ-HR25VF

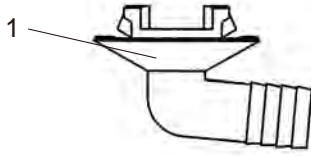
## 1-2. OUTDOOR UNIT ELECTRICAL PARTS



No.	Part No.	Part Name	Symbol in Wiring Diagram	Q'ty/unit			Remarks
				MUZ-HR			
				25VF-E1	25VF-ER1	25VF-ET1	
1	-	P.C. BOARD COVER		1	1	1	DY02A874G01, SQ33C889H24 (2 PCS)
2	-	P.C. BOARD SUPPORT		1	1	1	DY25A872G01
3	G2W 007 460	INVERTER P.C. BOARD		1	1	1	Includes heat sink and RT64
4	-	HEAT SINK HOLDER		1	1	1	DY25A873G02
5	-	HEAT SINK SUPPORT ASSEMBLY		1	1	1	DY00B913G02
6	G2W 001 359	REACTOR	L61	1	1	1	
7	G2W 002 365	R.V. COIL	21S4	1	1	1	
8	G2W 002 353	THERMISTOR SET	RT61, RT62	1	1	1	DEFROST, DISCHARGE
9	G2W 001 357	OUTDOOR HEAT EXCHANGER THERMISTOR	RT68	1	1	1	
10	G2W 002 355	AMBIENT TEMPERATURE THERMISTOR	RT65	1	1	1	
11	-	TERMINAL BLOCK SUPPORT		1	1	1	DY00B917G02
12	G2W 001 373	TERMINAL BLOCK	TB1	1	1	1	5 P(S1,S2, S3, L, N)



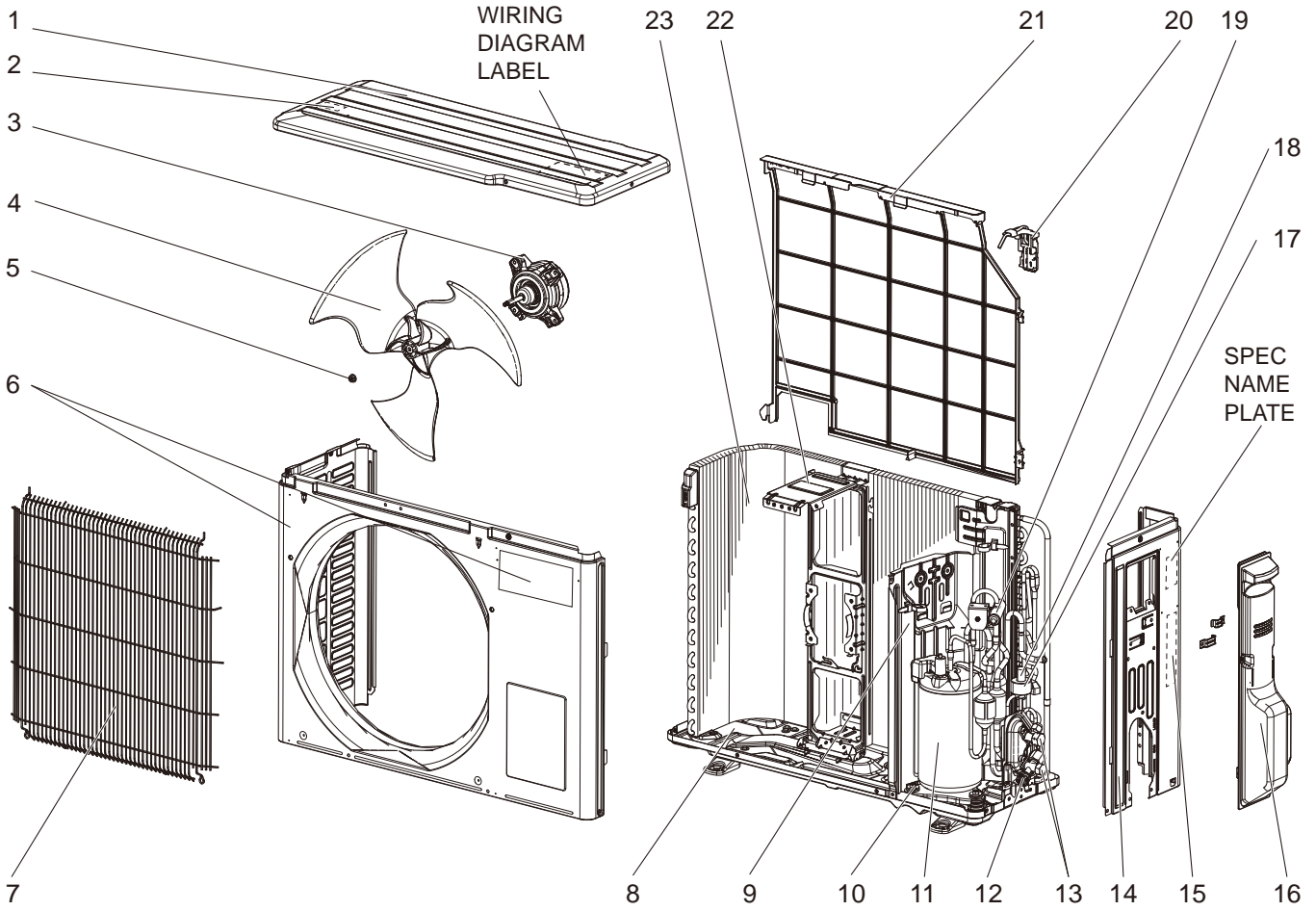
**MUZ-HR25VF**  
**1-3. DRAIN SOCKET**



No.	Part No.	Part Name	Symbol in Wiring Diagram	Q'ty/unit			Remarks
				MUZ-HR			
				25VF- <span style="border: 1px solid black;">E1</span>	25VF- <span style="border: 1px solid black;">ER1</span>	25VF- <span style="border: 1px solid black;">ET1</span>	
1	G2W 001 765	DRAIN SOCKET		1	1	1	

**MUZ-HR35VF**

**1-4. OUTDOOR UNIT STRUCTURAL PARTS AND FUNCTIONAL PARTS**



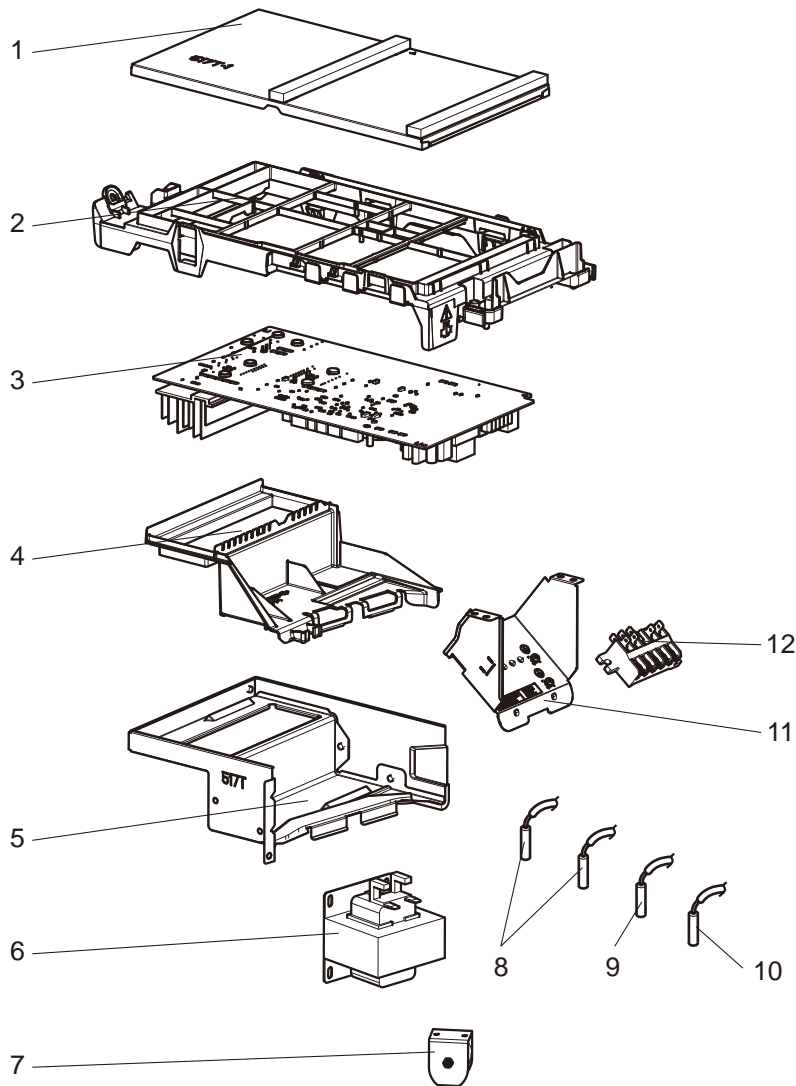
## 1-4. OUTDOOR UNIT STRUCTURAL PARTS AND FUNCTIONAL PARTS

Part number that is circled is not shown in the illustration.

No.	Part No.	Part Name	Symbol in Wiring Diagram	Q'ty/unit			Remarks
				MUZ-HR			
				35VF- <input type="checkbox"/> E1	35VF- <input type="checkbox"/> ER1	35VF- <input type="checkbox"/> ET1	
1	G2W 002 057	TOP PANEL ASSEMBLY		1	1	1	Not including No. 2 and wiring diagram
2	-	LABEL		1	1	1	JG79R840H02
3	G2W 002 350	OUTDOOR FAN MOTOR	MF	1	1	1	RC0J55- <input type="checkbox"/>
4	G2W 001 550	PROPELLER FAN		1	1	1	
5	G2W 001 753	PROPELLER FAN NUT		1	1	1	
6	G2W 006 050	CABINET		1	1	1	Includes brand label
7	G2W 002 063	GRILLE		1	1	1	
8	G2W 003 055	BASE ASSEMBLY		1	1	1	
9	G2W 005 150	SEPARATOR		1	1	1	
10	G2W 001 773	COMPRESSOR RUBBER SET		3	3	3	3 RUBBERS/SET
11	G2W 004 650	COMPRESSOR	MC	1	1	1	KVB073FUXMC
12	-	PORT CAP		1	1	1	DQ26T763H04
13	G2W 002 655	STOP VALVE ASSEMBLY		1	1	1	Gas: ø9.52 Liquid: ø6.35 Includes pipes
14	G2W 002 060	BACK PANEL		1	1	1	Not including SPEC NAME PLATE or No. 15
15	-	LABEL		1	1		DG79T490H01
	-					1	DG79T490H02
16	G2W 002 053	SERVICE PANEL		1	1	1	
17	G2W 002 362	EXPANSION VALVE COIL	LEV	1	1	1	
18	G2W 002 668	EXPANSION VALVE ASSEMBLY		1	1	1	Includes capillary tube ø3.0 x ø2.0 x 260
19	G2W 002 665	4-WAY VALVE		1	1	1	
20	-	THERMO HOLDER (AMBIENT)		1	1	1	JQ25A222G01
21	G2W 003 065	CONDENSER WIRE NET		1	1	1	
22	G2W 003 154	MOTOR SUPPORT		1	1	1	
23	G2W 004 660	OUTDOOR HEAT EXCHANGER		1	1	1	
②4	G2W 003 371	COMPRESSOR LEAD WIRE ASSEMBLY		1	1	1	

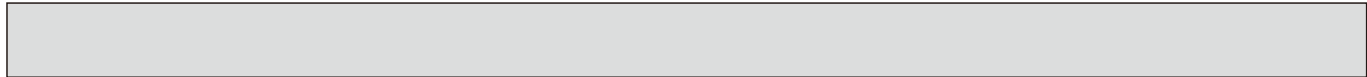
# MUZ-HR35VF

## 1-5. OUTDOOR UNIT ELECTRICAL PARTS

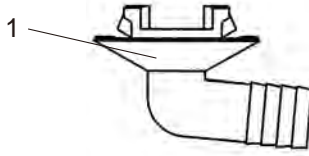


No.	Part No.	Part Name	Symbol in Wiring Diagram	Q'ty/unit			Remarks
				MUZ-HR			
				35VF- <u>E1</u>	35VF- <u>ER1</u>	35VF- <u>ET1</u>	
1	-	P.C. BOARD COVER		1	1	1	DY02A874G01, SQ33C889H24 (2 PCS)
2	-	P.C. BOARD SUPPORT		1	1	1	DY25A872G01
3	G2W 008 460	INVERTER P.C. BOARD		1	1	1	Includes heat sink and RT64
4	-	HEAT SINK HOLDER		1	1	1	DY25A873G02
5	-	HEAT SINK SUPPORT ASSEMBLY		1	1	1	DY00B913G02
6	G2W 001 359	REACTOR	L61	1	1	1	
7	G2W 002 365	R.V. COIL	21S4	1	1	1	
8	G2W 002 353	THERMISTOR SET	RT61, RT62	1	1	1	DEFROST, DISCHARGE
9	G2W 001 357	OUTDOOR HEAT EXCHANGER THERMISTOR	RT68	1	1	1	
10	G2W 002 355	AMBIENT TEMPERATURE THERMISTOR	RT65	1	1	1	
11	-	TERMINAL BLOCK SUPPORT		1	1	1	DY00B917G02
12	G2W 001 373	TERMINAL BLOCK	TB1	1	1	1	5 P(S1,S2, S3, L, N)





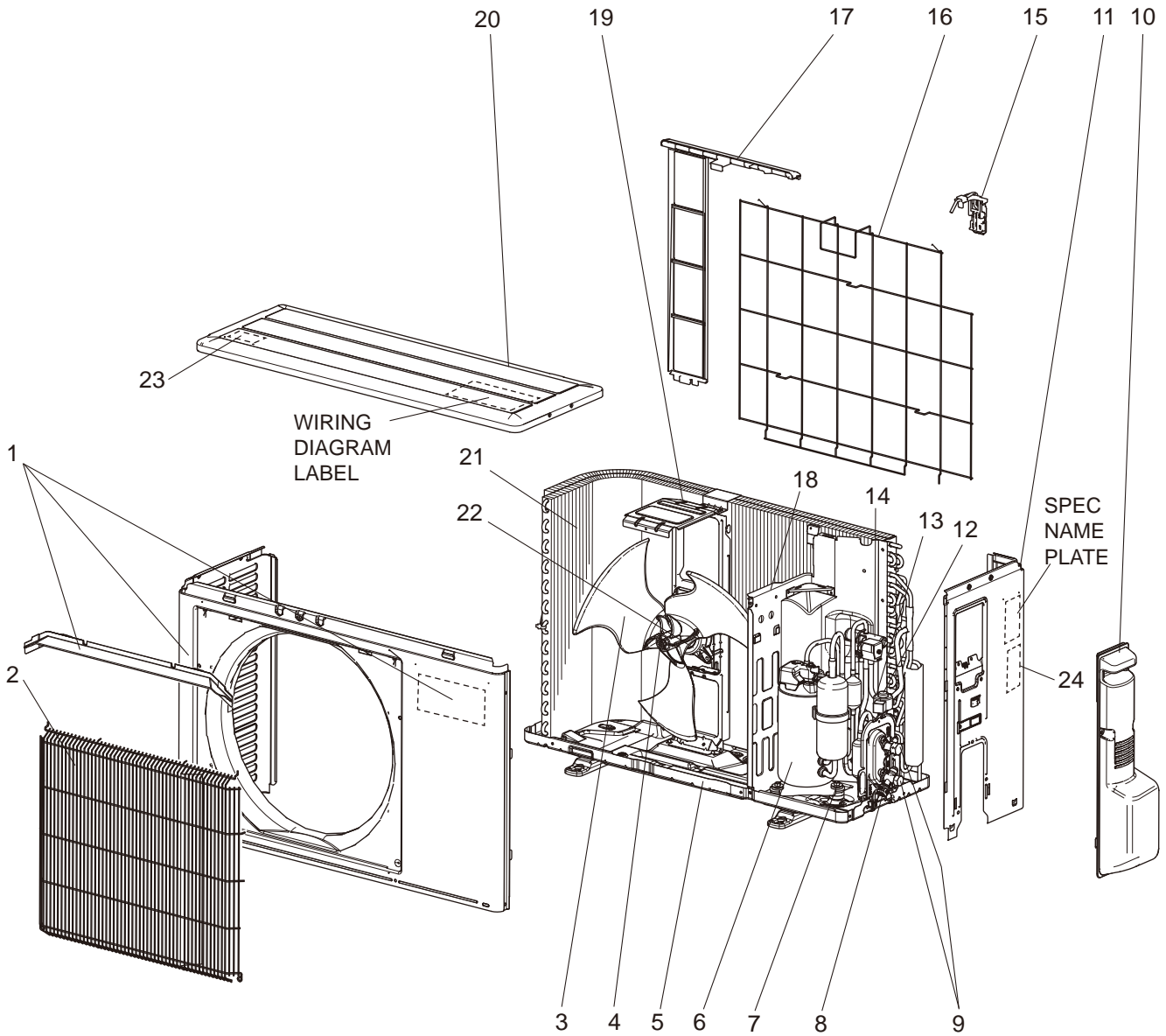
**MUZ-HR35VF**  
**1-6. DRAIN SOCKET**



No.	Part No.	Part Name	Symbol in Wiring Diagram	Q'ty/unit			Remarks
				MUZ-HR			
				35VF- <u>E1</u>	35VF- <u>ER1</u>	35VF- <u>ET1</u>	
1	G2W 001 765	DRAIN SOCKET		1	1	1	

MUZ-HR42VF MUZ-HR50VF

1-7. OUTDOOR UNIT STRUCTURAL PARTS AND FUNCTIONAL PARTS

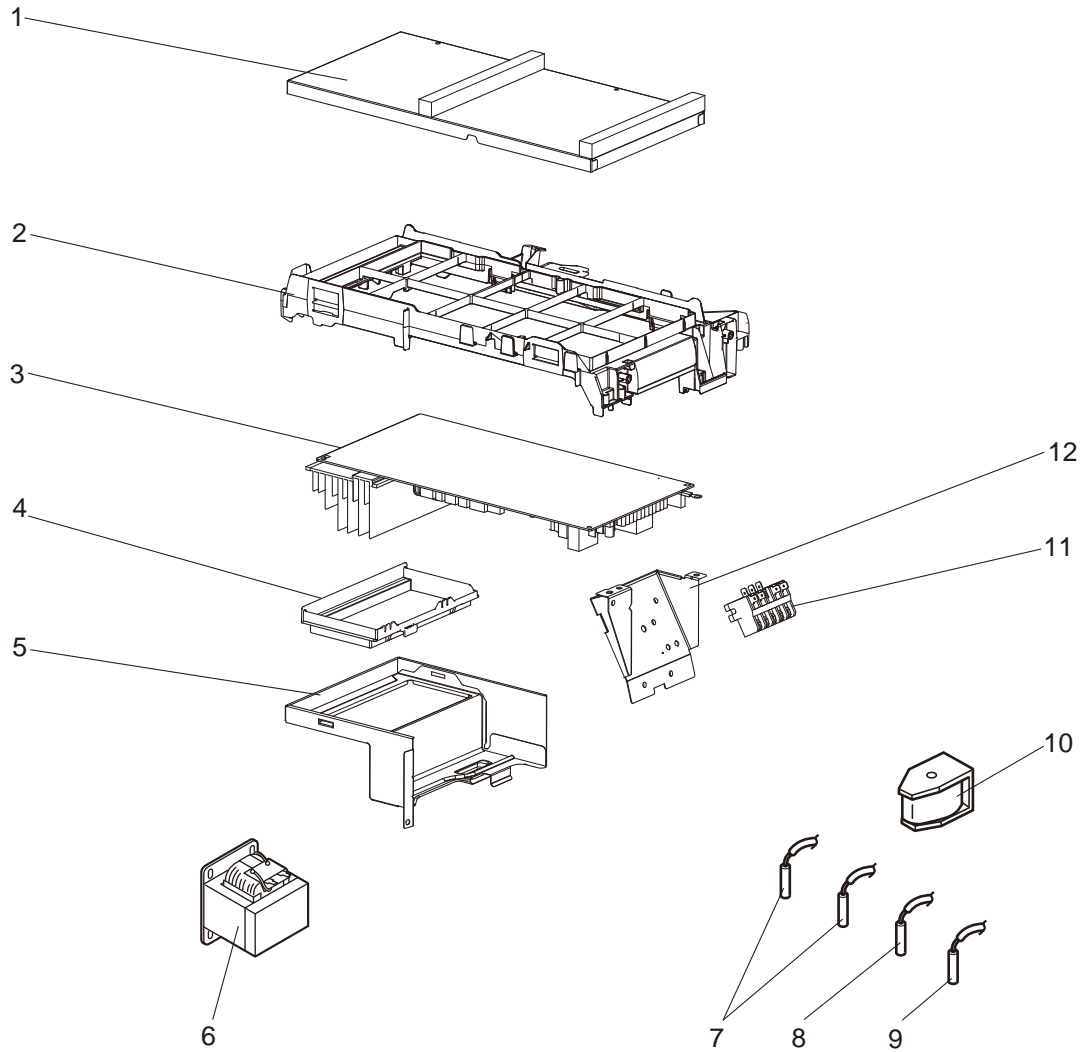


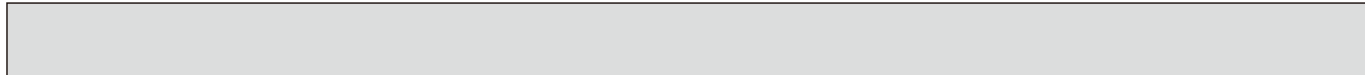
## 1-7. OUTDOOR UNIT STRUCTURAL PARTS AND FUNCTIONAL PARTS

Part numbers that are circled are not shown in the illustration.

No.	Part No.	Part Name	Symbol in Wiring Diagram	Q'ty/unit						Remarks
				MUZ-HR						
				42VF-			50VF-			
				E1	ER1	ET1	E1	ER1	ET1	
1	G2W 004 050	CABINET		1	1	1	1	1	1	Includes ice guard and brand label
2	G2W 001 063	WIRE GRILLE		1	1	1	1	1	1	
3	G2W 001 550	PROPELLER FAN		1	1	1	1	1	1	
4	G2W 001 753	PROPELLER FAN NUT		1	1	1	1	1	1	
5	G2W 001 055	BASE ASSEMBLY		1	1	1	1	1	1	
6	G2W 005 650	COMPRESSOR	MC	1	1	1				KVB092FYAMC
	G2W 002 650						1	1	1	SVB130FBBMC
7	G2W 001 773	COMPRESSOR RUBBER SET		3	3	3				3 RUBBERS/SET
	G2W 002 773						3	3	3	
8	-	PORT CAP		1	1	1	1	1	1	DQ26T763H04
9	G2W 001 655	STOP VALVE ASSEMBLY		1	1	1	1	1	1	Gas: ø9.52 Liquid: ø6.35 Includes pipes
10	G2W 001 053	SERVICE PANEL ASSEMBLY		1	1	1	1	1	1	
11	G2W 001 060	BACK PANEL ASSEMBLY		1	1	1	1	1	1	Not including SPEC NAME PLATE or No. 24
12	G2W 001 668	EXPANSION VALVE ASSEMBLY		1	1	1	1	1	1	Includes capillary tube ø4.0xø2.4x240
13	G2W 001 362	EXPANSION VALVE COIL	LEV	1	1	1	1	1	1	
14	G2W 001 665	4-WAY VALVE		1	1	1	1	1	1	
15	-	THERMO HOLDER (AMBIENT)		1	1	1	1	1	1	DK25A972G04
16	G2W 002 067	CONDENSER WIRE NET ASSEMBLY		1	1	1	1	1	1	
17	G2W 001 065	CONDENSER NET		1	1	1	1	1	1	
18	G2W 003 150	SEPARATOR		1	1	1	1	1	1	
19	G2W 002 154	MOTOR SUPPORT		1	1	1	1	1	1	
20	G2W 001 057	TOP PANEL ASSEMBLY		1	1	1	1	1	1	Not including WIRING DIAGRAM LABEL or No. 23
21	G2W 002 660	OUTDOOR HEAT EXCHANGER		1	1	1	1	1	1	Includes No. 26
22	G2W 002 350	OUTDOOR FAN MOTOR	MF	1	1	1	1	1	1	RC0J55-□□
23	-	LABEL		1	1	1	1	1	1	JG79R840H02
24	-	LABEL		1	1		1	1		DG79T490H01
					1			1		DG79T490H02
25	G2W 001 371	COMPRESSOR LEAD WIRE ASSEMBLY		1	1	1				
	G2W 002 371						1	1	1	
26	G2W 001 672	CT_PIPE ASSEMBLY		1	1	1	1	1	1	Includes capillary tube ø3.0xø1.8x600 (x2)
27	G2W 001 765	DRAIN SOCKET		1	1	1	1	1	1	

**MUZ-HR42VF MUZ-HR50VF**  
**1-8. OUTDOOR UNIT ELECTRICAL PARTS**



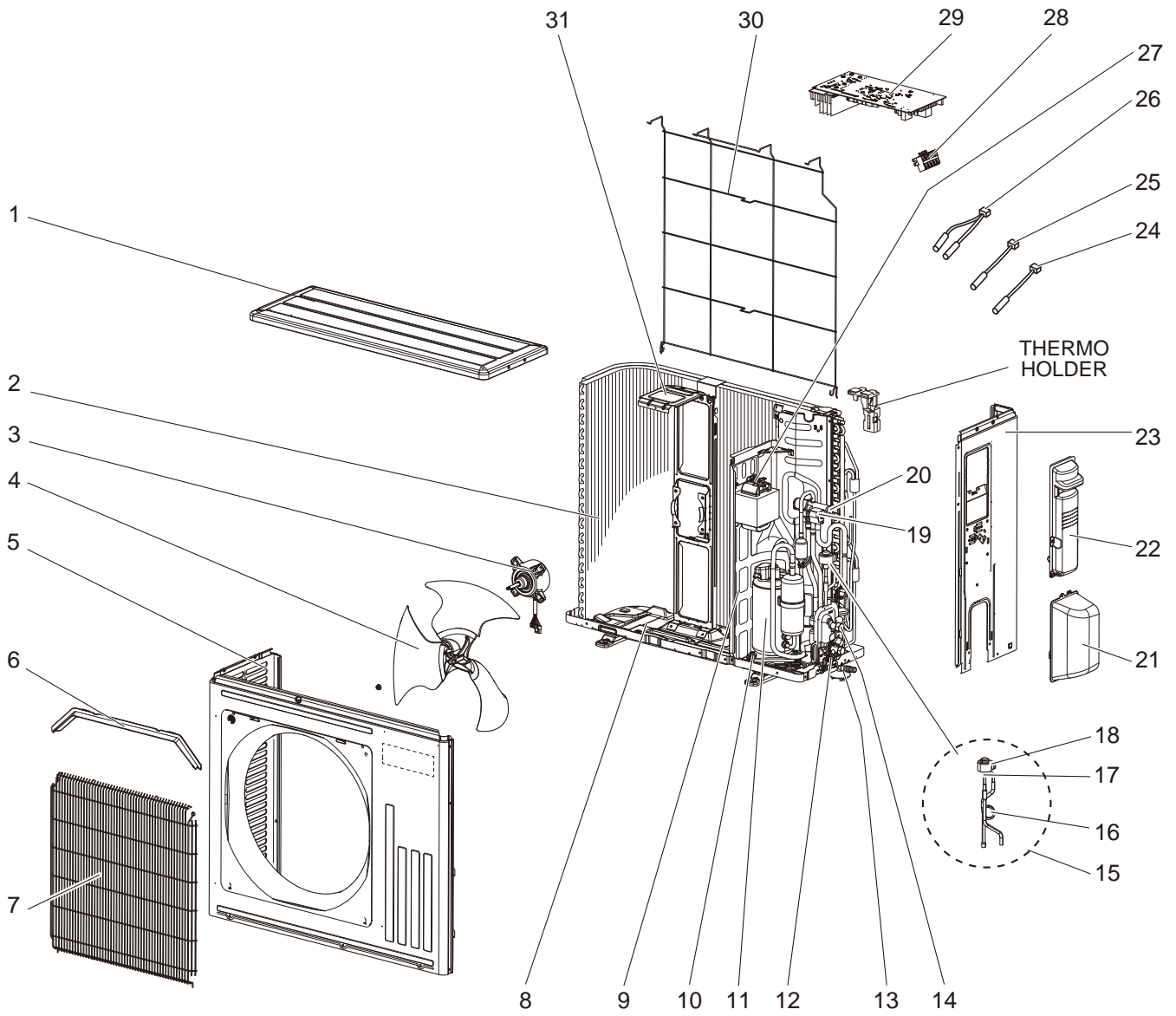


**1-8. OUTDOOR UNIT ELECTRICAL PARTS**

No.	Part No.	Part Name	Symbol in Wiring Diagram	Q'ty/unit						Remarks
				MUZ-HR						
				42VF-			50VF-			
				E1	ER1	ET1	E1	ER1	ET1	
1	-	P.C. BOARD COVER		1	1	1	1	1	1	DY02B869G01, SQ33C889H05 (2 PCS)
2	-	P.C. BOARD SUPPORT		1	1	1	1	1	1	DY25A804G02
3	G2W 009 460	INVERTER P.C. BOARD		1	1	1				
	G2W 010 460						1	1	1	
4	-	HEAT SINK HOLDER ASSEMBLY		1	1	1	1	1	1	DY00C493G02
5	-	HEAT SINK SUPPORT ASSEMBLY		1	1	1	1	1	1	DY00B872G03
6	G2W 002 359	REACTOR	L61	1	1	1	1	1	1	
7	G2W 001 353	THERMISTOR SET	RT61, RT62	1	1	1	1	1	1	DEFROST, DISCHARGE
8	G2W 001 355	AMBIENT TEMPERATURE THERMISTOR	RT65	1	1	1	1	1	1	
9	G2W 001 357	OUTDOOR HEAT EXCHANGER TEMPERATURE THERMISTOR	RT68	1	1	1	1	1	1	
10	G2W 001 365	R.V. COIL ASSEMBLY	21S4	1	1	1	1	1	1	
11	G2W 001 373	TERMINAL BLOCK	TB1	1	1	1	1	1	1	5P (S1, S2, S3, L, N)
12	-	TERMINAL BLOCK SUPPORT		1	1	1	1	1	1	DY00B879G03

MUZ-HR60VF MUZ-HR71VF

1-9. OUTDOOR UNIT STRUCTURAL PARTS, ELECTRICAL PARTS AND FUNCTIONAL PARTS



## 1-9. OUTDOOR UNIT STRUCTURAL PARTS, ELECTRICAL PARTS AND FUNCTIONAL PARTS

No.	Part No.	Part Name	Symbol in Wiring Diagram	Q'ty/unit						Remarks
				MUZ-HR60VF-ET	MUZ-HR60VF-ERT	MUZ-HR60VF-ET	MUZ-HR71VF-ET	MUZ-HR71VF-ERT	MUZ-HR71VF-ET	
1	E22 Y86 297	TOP PANEL		1	1	1	1	1	1	
2	E22 Y86 630	OUTDOOR HEAT EXCHANGER		1	1	1	1	1	1	Includes capillary tube ø3.0 x ø2.0 x 210
3	E22 Y86 301	OUTDOOR FAN MOTOR	MF	1	1	1	1	1	1	RC0J50-□□
4	E22 Y86 501	PROPELLER FAN		1	1	1	1	1	1	
5	E22 Y86 232	CABINET		1	1	1	1	1	1	
6	E22 Y86 531	ICE GUARD		1	1	1	1	1	1	
7	E22 Y86 521	GRILLE (OUT)		1	1	1	1	1	1	
8	E22 Y84 290	BASE		1	1	1	1	1	1	
9	E22 Y86 293	SEPARATOR		1	1	1	1	1	1	
10	E22 C34 506	COMPRESSOR RUBBER SET		3	3	3	3	3	3	3 RUBBERS/SET
11	E22 R83 900	COMPRESSOR	MC	1	1	1	1	1	1	SVB130FBBMT
12	E22 22A 661	STOP VALVE (GAS)		1	1	1	1	1	1	ø12.7
13	E22 838 704	DRAIN SOCKET		1	1	1	1	1	1	
14	E22 Y86 662	STOP VALVE (LIQUID)		1	1	1	1	1	1	ø6.35
15	E22 41G 645	EXPANSION VALVE ASSEMBLY		1	1	1	1	1	1	Includes 16, 17 and 18
16	E22 J47 936	CAPILLARY TUBE		1	1	1	1	1	1	ø4.0 x ø2.4 x 240
17	E22 Y84 640	EXPANSION VALVE		1	1	1	1	1	1	
18	E22 Y84 493	EXPANSION VALVE COIL	LEV	1	1	1	1	1	1	
19	E22 Y86 490	R.V. COIL	21S4	1	1	1	1	1	1	
20	E22 J44 961	4-WAY VALVE		1	1	1	1	1	1	
21	E22 Y86 650	VALVE COVER		1	1	1	1	1	1	
22	E22 Y86 245	SERVICE PANEL		1	1	1	1	1	1	
23	E22 Y86 233	BACK PANEL (OUT)		1	1	1	1	1	1	
24	E22 Y86 309	AMBIENT TEMPERATURE THERMISTOR	RT65	1	1	1	1	1	1	
25	E22 C34 307	OUTDOOR HEAT EXCHANGER TEMPERATURE THERMISTOR	RT68	1	1	1	1	1	1	
26	E22 Y86 306	THERMISTOR SET	RT61, RT62	1	1	1	1	1	1	DEFROST, DISCHARGE
27	E22 N94 337	REACTOR	L61	1	1	1	1	1	1	
28	E22 T95 374	TERMINAL BLOCK	TB1	1	1	1	1	1	1	5 P
29	E22 42K 451	INVERTER P.C. BOARD		1	1	1				Includes heat sink and RT64
29	E22 43K 451	INVERTER P.C. BOARD					1	1	1	Includes heat sink and RT64
30	E22 Y86 525	CONDENSER WIRE NET		1	1	1	1	1	1	
31	E22 Y86 515	MOTOR SUPPORT		1	1	1	1	1	1	

# **mitsubishi electric corporation**

HEAD OFFICE: TOKYO BUILDING, 2-7-3, MARUNOUCHI, CHIYODA-KU, TOKYO 100-8310, JAPAN

© Copyright 2018 MITSUBISHI ELECTRIC CORPORATION

Issued: Feb. 2020. No. OBB823 REVISED EDITION-C

Issued: Jan. 2020. No. OBB823 REVISED EDITION-B

Issued: Apr. 2019. No. OBB823 REVISED EDITION-A

Published: Oct. 2018. No. OBB823

Made in Japan

Specifications are subject to change without notice.