

OUTDOOR UNIT PARTS CATALOG

No. OBB590
REVISED EDITION-G

Models

MUZ-EF25VE - E1, E2, E3, E4, E5, ER3, ER4, ER5, ET3, ET4, ET5

MUZ-EF25VEH - E1, E2, E3, E4, ER2, ER3, ET2, ET3

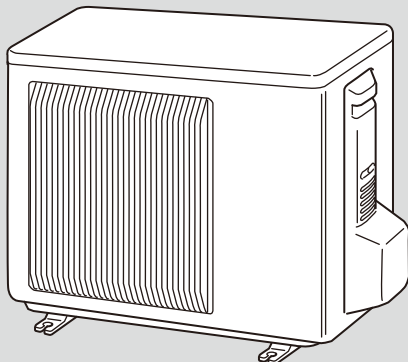
MUZ-EF35VE - E1, E2, E3, E4, E5, ER3, ER4, ER5, ET3, ET4, ET5

MUZ-EF35VEH - E1, E2, E3, E4, ER2, ER3, ET2, ET3

MUZ-EF42VE - E1, E2, E3, E4, E5, ER3, ER4, ER5, ET3, ET4, ET5

MUZ-EF50VE - E1, E2, E3, ER2, ER3, ET2, ET3

MUZ-EF25VE MUZ-EF25VEH
MUZ-EF35VE MUZ-EF35VEH
MUZ-EF42VE



CONTENTS

1. SERVICE PARTS LIST.....	2
2. OPTIONAL PARTS.....	34

SERVICE MANUAL (OBH590)

Revision A:

- Back panels for MUZ-EF35/42VE - [E1] have been changed.

Revision B:

- MUZ-EF25/35/42/50VE - [E2] and MUZ-EF25/35VEH - [E2] have been added.

Revision C:

- MUZ-EF25/35/42VE - [E3], MUZ-EF25/35/42VE - [ER3], MUZ-EF50VE - [ER2] and MUZ-EF25/35VEH - [ER2] have been added.

Revision D:

- MUZ-EF25/35/42VE - [ET3], MUZ-EF50VE - [ET2] and MUZ-EF25/35VEH - [ET2] have been added.

Revision E:

- MUZ-EF25/35/42VE - [E4], [ER4], [ET4] and MUZ-EF25/35VEH - [E3], [ER3], [ET3] have been added.

Revision F:

- MUZ-EF25/35/42VE - [E6], [ER5], [ET5], MUZ-EF50VE - [E3], [ER3], [ET3] and MUZ-EF25/35VEH - [E4] have been added.

Revision G:

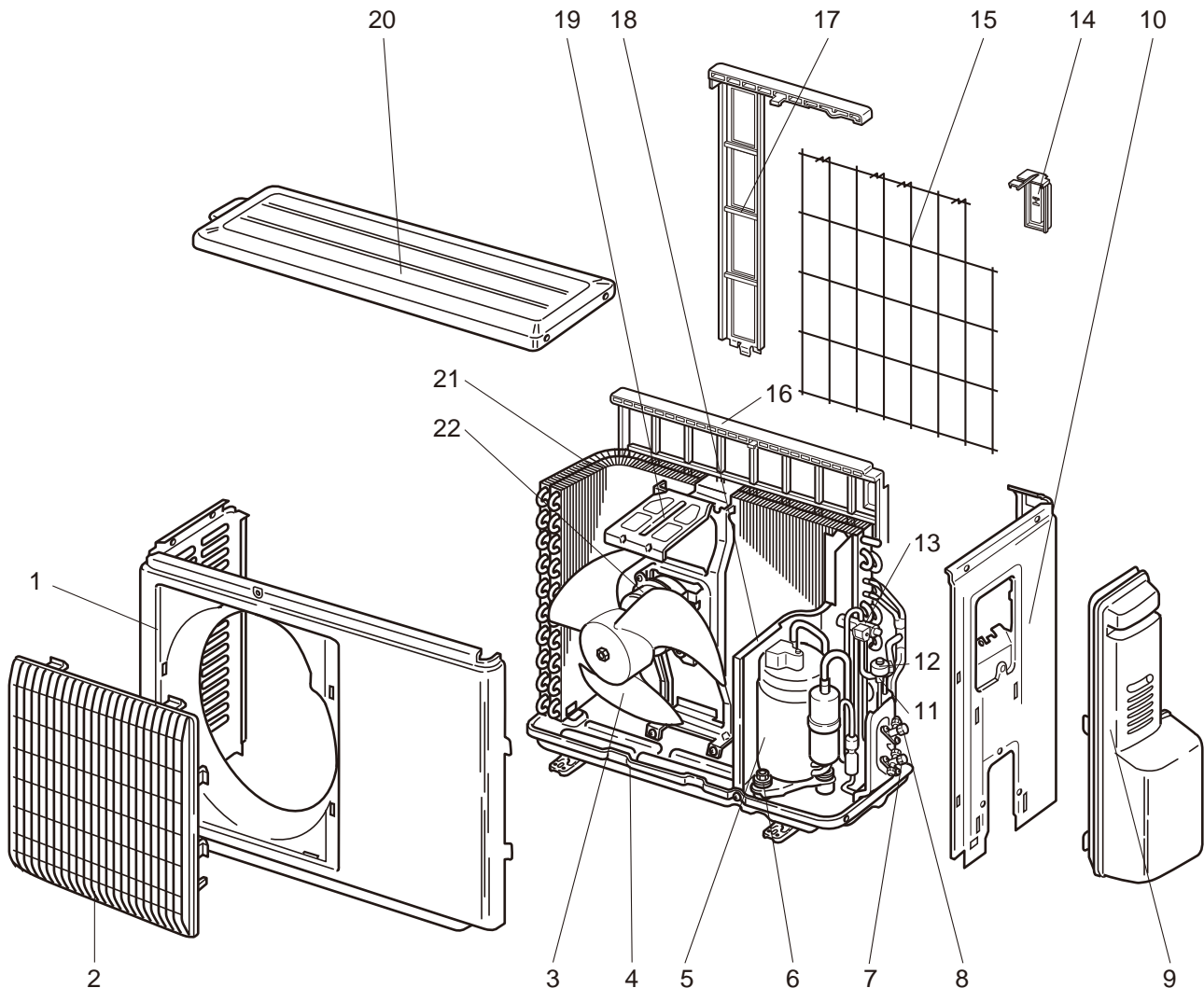
- Some descriptions have been modified.

1

SERVICE PARTS LIST

MUZ-EF25VE -[E1], [E2], [E3], [E4], [ER3], [ER4], [ET3], [ET4]

1-1. OUTDOOR UNIT STRUCTURAL PARTS AND FUNCTIONAL PARTS



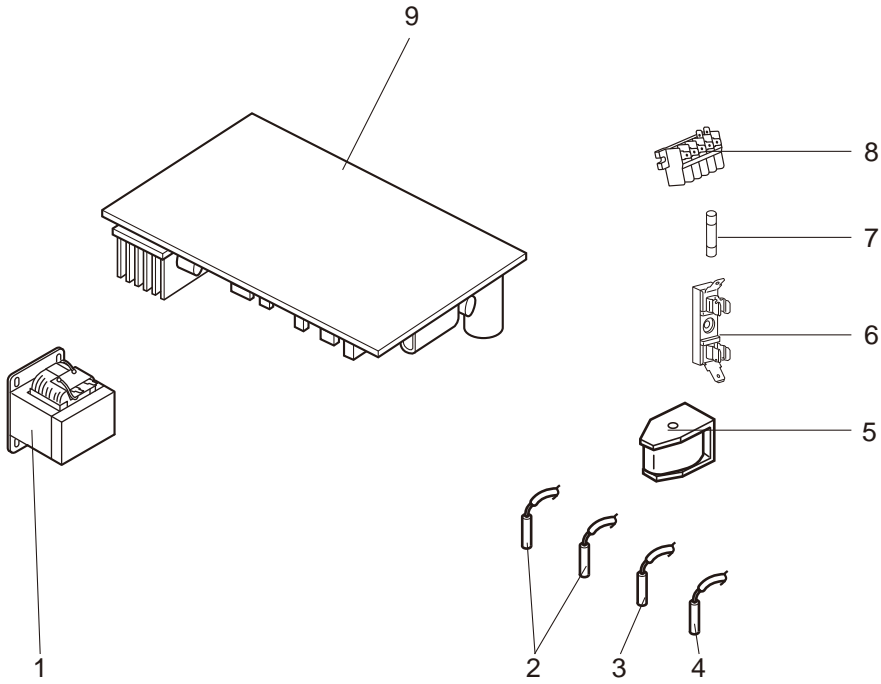
1-1. OUTDOOR UNIT STRUCTURAL PARTS AND FUNCTIONAL PARTS

Part numbers that are circled are not shown in the illustration.

No.	Part No.	Part Name	Symbol in Wiring Diagram	Q'ty/unit								Remarks
				MUZ-EF25								
				VE- E1	VE- E2	VE- E3	VE- E4	VE- ER3	VE- ER4	VE- ET3	VE- ET4	
1	E12 927 232	CABINET		1	1	1	1	1	1	1	1	
2	E12 927 521	GRILLE		1	1	1	1	1	1	1	1	
3	E12 927 501	PROPELLER FAN		1	1	1	1	1	1	1	1	
4	E12 D69 290	BASE		1	1	1	1	1	1	1	1	
5	E12 G10 900	COMPRESSOR	MC	1	1	1	1	1	1	1	1	KNB073FKFMC
6	E12 065 506	COMPRESSOR RUBBER SET		3	3	3	3	3	3	3	3	3 RUBBERS/SET
7	E12 D69 661	STOP VALVE (GAS)		1	1	1	1	1	1	1	1	ø9.52
8	E12 D58 662	STOP VALVE (LIQUID)		1	1	1	1	1	1	1	1	ø6.35
9	E12 927 245	SERVICE PANEL		1	1	1	1	1	1	1	1	
10	E12 G11 233	BACK PANEL		1	1	1	1	1	1	1	1	
11	E12 927 640	EXPANSION VALVE		1	1	1	1	1	1	1	1	
12	E12 G10 493	EXPANSION VALVE COIL	LEV	1	1	1	1	1	1	1	1	
13	E12 927 961	4-WAY VALVE		1	1	1	1	1	1	1	1	
14	E12 928 079	THERMO HOLDER				1	1	1	1	1	1	
15	E12 928 525	CONDENSER WIRE NET				1	1	1	1	1	1	
16	E12 B83 523	CONDENSER NET		1	1							
17	E12 928 523	CONDENSER NET				1	1	1	1	1	1	
18	E12 G10 293	SEPARATOR		1	1	1	1	1	1	1	1	
19	E12 927 515	MOTOR SUPPORT		1	1	1	1	1	1	1	1	
20	E12 927 297	TOP PANEL		1	1	1	1	1	1	1	1	
21	E12 G10 630	OUTDOOR HEAT EXCHANGER		1	1	1	1	1	1	1	1	
22	E12 G11 301	OUTDOOR FAN MOTOR	MF	1	1	1		1		1		RC0J50-□□
	E12 P03 301	OUTDOOR FAN MOTOR	MF				1		1		1	RC0J50-□□
⑳	E12 927 937	CAPILLARY TUBE		1	1	1	1	1	1	1	1	ø3.0×ø2.0×240
㉑	E12 838 704	DRAIN SOCKET		1	1	1	1	1	1	1	1	



MUZ-EF25VE -E1, E2, E3, E4, ER3, ER4, ET3, ET4
1-2. OUTDOOR UNIT ELECTRICAL PARTS



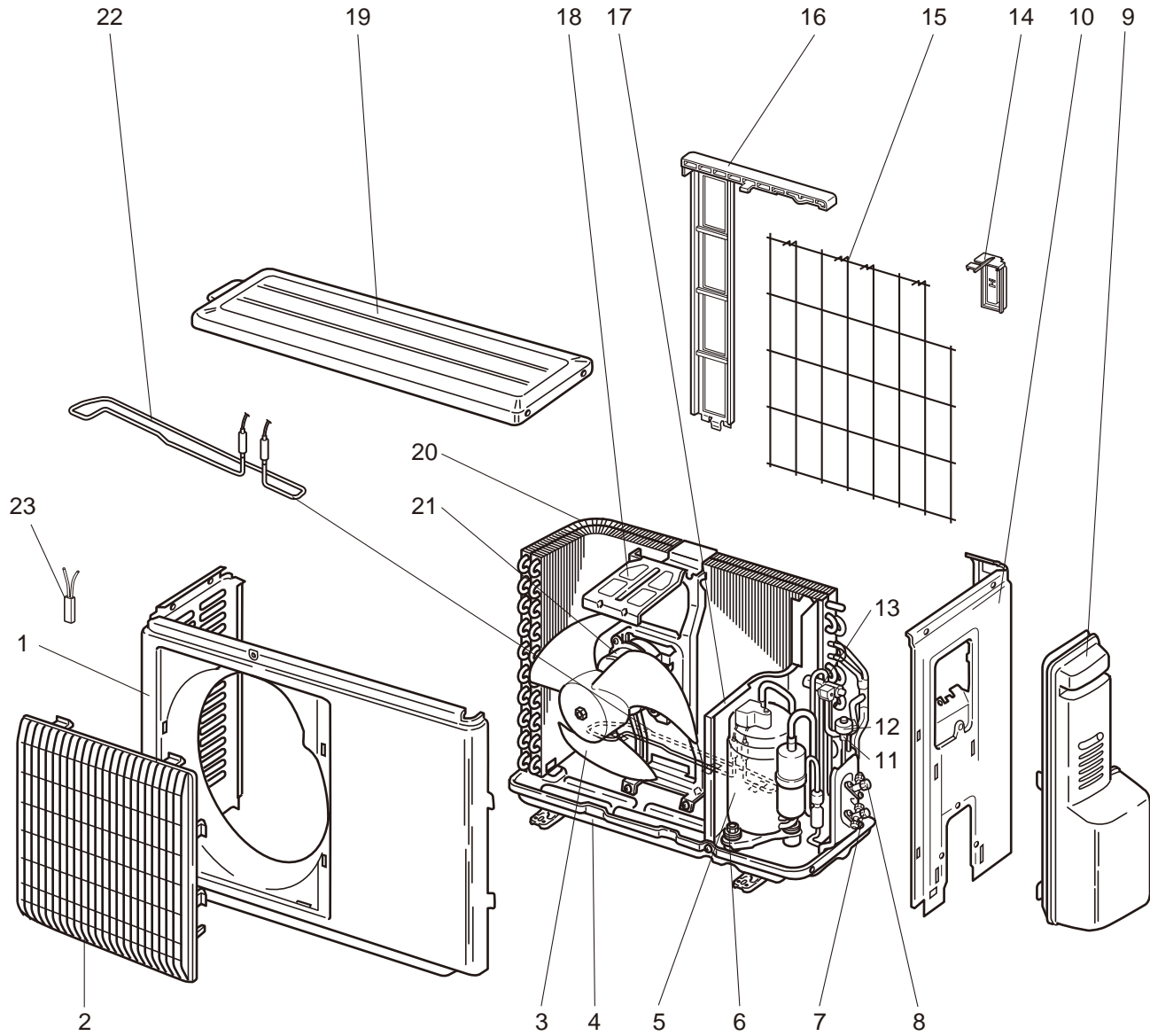


1-2. OUTDOOR UNIT ELECTRICAL PARTS

No.	Part No.	Part Name	Symbol in Wiring Diagram	Q'ty/unit								Remarks
				MUZ-EF25								
				VE- E1	VE- E2	VE- E3	VE- E4	VE- ER3	VE- ER4	VE- ET3	VE- ET4	
1	E12 G10 337	REACTOR	L61	1	1	1	1	1	1	1	1	
2	E12 C34 306	THERMISTOR SET	RT61, RT62	1	1	1	1	1	1	1	1	DEFROST, DIS- CHARGE
3	E12 G10 309	AMBIENT TEMPERA- TURE THERMISTOR	RT65	1	1	1	1	1	1	1	1	
4	E12 C34 307	OUTDOOR HEAT EX- CHANGER TEMPERA- TURE THERMISTOR	RT68	1	1	1	1	1	1	1	1	
5	E12 G10 490	R.V. COIL	21S4	1	1	1	1	1	1	1	1	
6	E12 735 241	FUSE HOLDER		1	1	1	1	1	1	1	1	
7	E12 735 382	FUSE	F61	1	1	1	1	1	1	1	1	T20AL250V
8	E12 T95 374	TERMINAL BLOCK	TB	1	1	1	1	1	1	1	1	5 P
9	E12 G10 451	INVERTER P.C. BOARD		1	1	1		1		1		Includes heat sink and RT64
	E12 P03 451	INVERTER P.C. BOARD					1		1		1	

MUZ-EF25VEH - [E1], [E2], [E3], [ER2], [ER3], [ET2], [ET3]

1-3. OUTDOOR UNIT STRUCTURAL PARTS AND FUNCTIONAL PARTS



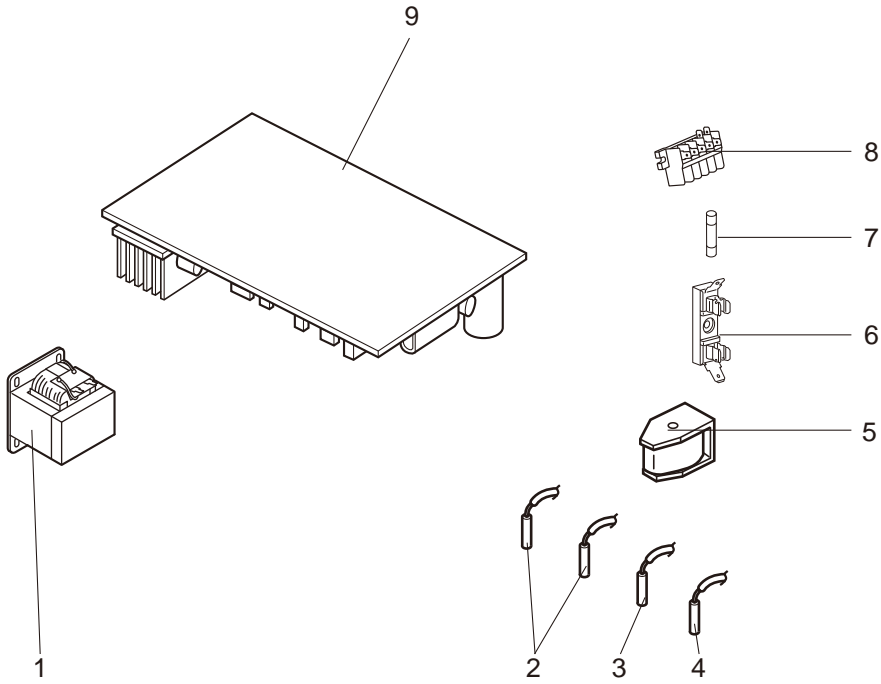
1-3. OUTDOOR UNIT STRUCTURAL PARTS AND FUNCTIONAL PARTS

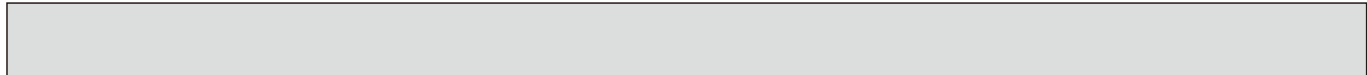
Part number that is circled is not shown in the illustration.

No.	Part No.	Part Name	Symbol in Wiring Diagram	Q'ty/unit							Remarks
				MUZ-EF25							
				VEH- E1	VEH- E2	VEH- E3	VEH- ER2	VEH- ER3	VEH- ET2	VEH- ET3	
1	E12 927 232	CABINET		1	1	1	1	1	1	1	
2	E12 927 521	GRILLE		1	1	1	1	1	1	1	
3	E12 927 501	PROPELLER FAN		1	1	1	1	1	1	1	
4	E12 D70 290	BASE		1	1	1	1	1	1	1	
5	E12 G10 900	COMPRESSOR	MC	1	1	1	1	1	1	1	KNB073FKFMC
6	E12 065 506	COMPRESSOR RUBBER SET		3	3	3	3	3	3	3	3 RUBBERS/SET
7	E12 D69 661	STOP VALVE (GAS)		1	1	1	1	1	1	1	ø9.52
8	E12 D58 662	STOP VALVE (LIQUID)		1	1	1	1	1	1	1	ø6.35
9	E12 927 245	SERVICE PANEL		1	1	1	1	1	1	1	
10	E12 G13 233	BACK PANEL		1	1	1	1	1	1	1	
11	E12 927 640	EXPANSION VALVE		1	1	1	1	1	1	1	
12	E12 G10 493	EXPANSION VALVE COIL	LEV	1	1	1	1	1	1	1	
13	E12 927 961	4-WAY VALVE		1	1	1	1	1	1	1	
14	E12 928 079	THERMO HOLDER		1	1	1	1	1	1	1	
15	E12 928 525	CONDENSER WIRE NET		1	1	1	1	1	1	1	
16	E12 928 523	CONDENSER NET		1	1	1	1	1	1	1	
17	E12 G13 293	SEPARATOR		1	1	1	1	1	1	1	
18	E12 927 515	MOTOR SUPPORT		1	1	1	1	1	1	1	
19	E12 927 297	TOP PANEL		1	1	1	1	1	1	1	
20	E12 G10 630	OUTDOOR HEAT EXCHANGER		1	1	1	1	1	1	1	
21	E12 G11 301	OUTDOOR FAN MOTOR	MF	1	1		1		1		RC0J50-□□
	E12 P03 301	OUTDOOR FAN MOTOR	MF			1		1		1	RC0J50-□□
22	E12 C36 526	DEFROST HEATER	H	1	1	1	1	1	1	1	
23	E12 C36 381	HEATER PROTECTOR	26H	1	1	1	1	1	1	1	
②4	E12 927 937	CAPILLARY TUBE		1	1	1	1	1	1	1	ø3.0xø2.0x240



MUZ-EF25VEH -E1, E2, E3, ER2, ER3, ET2, ET3
1-4. OUTDOOR UNIT ELECTRICAL PARTS



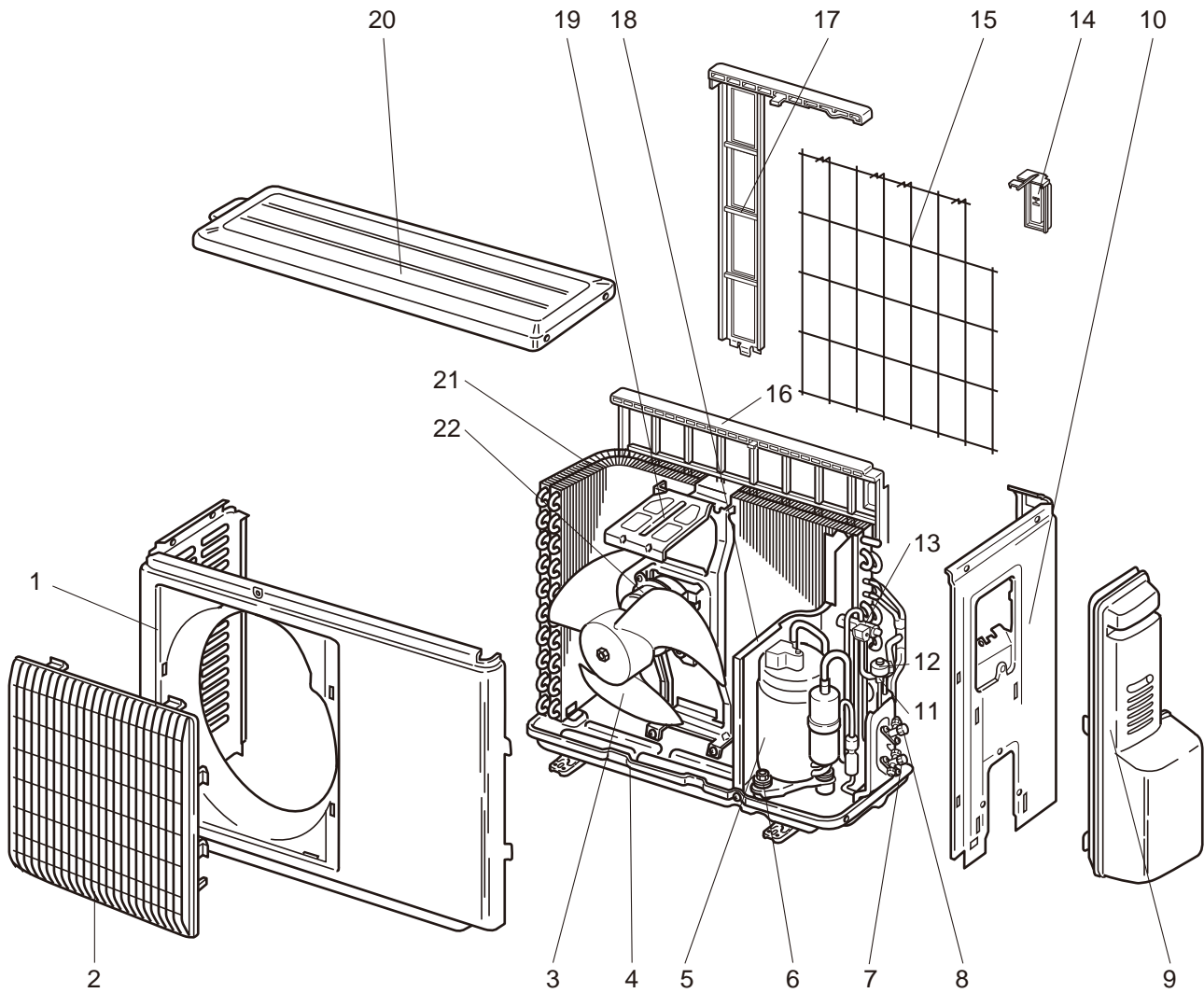


1-4. OUTDOOR UNIT ELECTRICAL PARTS

No.	Part No.	Part Name	Symbol in Wiring Diagram	Q'ty/unit							Remarks
				MUZ-EF25							
				VEH-E1	VEH-E2	VEH-E3	VEH-ER2	VEH-ER3	VEH-ET2	VEH-ET3	
1	E12 G10 337	REACTOR	L61	1	1	1	1	1	1	1	
2	E12 C34 306	THERMISTOR SET	RT61, RT62	1	1	1	1	1	1	1	DEFROST, DISCHARGE
3	E12 G10 309	AMBIENT TEMPERATURE THERMISTOR	RT65	1	1	1	1	1	1	1	
4	E12 C34 307	OUTDOOR HEAT EXCHANGER TEMPERATURE THERMISTOR	RT68	1	1	1	1	1	1	1	
5	E12 G10 490	R.V. COIL	21S4	1	1	1	1	1	1	1	
6	E12 735 241	FUSE HOLDER		1	1	1	1	1	1	1	
7	E12 735 382	FUSE	F61	1	1	1	1	1	1	1	T20AL250V
8	E12 T95 374	TERMINAL BLOCK	TB	1	1	1	1	1	1	1	5 P
9	E12 G13 451	INVERTER P.C. BOARD		1	1		1		1		Includes heat sink and RT64
	E12 P09 451	INVERTER P.C. BOARD				1		1		1	

MUZ-EF35VE -[E1], [E2], [E3], [E4], [ER3], [ER4], [ET3], [ET4]

1-5. OUTDOOR UNIT STRUCTURAL PARTS AND FUNCTIONAL PARTS

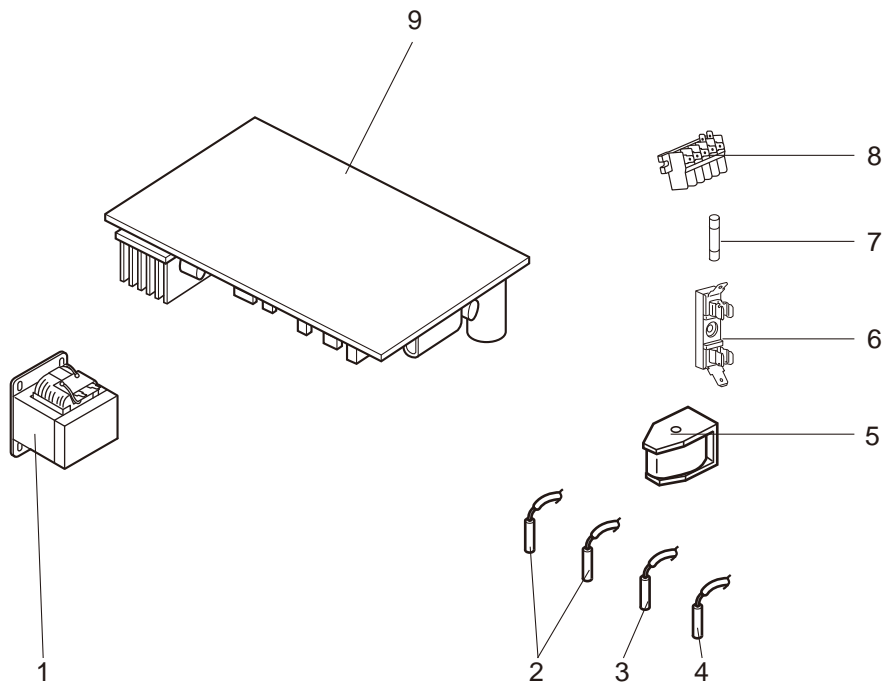


1-5. OUTDOOR UNIT STRUCTURAL PARTS AND FUNCTIONAL PARTS

Part numbers that are circled are not shown in the illustration.

No.	Part No.	Part Name	Symbol in Wiring Diagram	Q'ty/unit								Remarks
				MUZ-EF35								
				VE-E1	VE-E2	VE-E3	VE-E4	VE-ER3	VE-ER4	VE-ET3	VE-ET4	
1	E12 927 232	CABINET		1	1	1	1	1	1	1	1	
2	E12 927 521	GRILLE		1	1	1	1	1	1	1	1	
3	E12 927 501	PROPELLER FAN		1	1	1	1	1	1	1	1	
4	E12 D69 290	BASE		1	1	1	1	1	1	1	1	
5	E12 G11 900	COMPRESSOR	MC	1	1	1	1	1	1	1	1	KNB092FFAMC
6	E12 065 506	COMPRESSOR RUBBER SET		3	3	3	3	3	3	3	3	3 RUBBERS/SET
7	E12 D69 661	STOP VALVE (GAS)		1	1	1	1	1	1	1	1	ø9.52
8	E12 D58 662	STOP VALVE (LIQUID)		1	1	1	1	1	1	1	1	ø6.35
9	E12 927 245	SERVICE PANEL		1	1	1	1	1	1	1	1	
10	E12 G12 233	BACK PANEL		1	1	1	1	1	1	1	1	
11	E12 927 640	EXPANSION VALVE		1	1	1	1	1	1	1	1	
12	E12 G10 493	EXPANSION VALVE COIL	LEV	1	1	1	1	1	1	1	1	
13	E12 927 961	4-WAY VALVE		1	1	1	1	1	1	1	1	
14	E12 930 079	THERMO HOLDER				1	1	1	1	1	1	
15	E12 930 525	CONDENSER WIRE NET				1	1	1	1	1	1	
16	E12 929 523	CONDENSER NET		1	1							
17	E12 930 523	CONDENSER NET				1	1	1	1	1	1	
18	E12 G11 293	SEPARATOR		1	1	1	1	1	1	1	1	
19	E12 929 515	MOTOR SUPPORT		1	1	1	1	1	1	1	1	
20	E12 927 297	TOP PANEL		1	1	1	1	1	1	1	1	
21	E12 G11 630	OUTDOOR HEAT EXCHANGER		1	1	1	1	1	1	1	1	
22	E12 G11 301	OUTDOOR FAN MOTOR	MF	1	1	1		1		1		RC0J50-□□
	E12 P03 301	OUTDOOR FAN MOTOR	MF				1		1		1	RC0J50-□□
②③	E12 927 937	CAPILLARY TUBE		1	1	1	1	1	1	1	1	ø3.0×ø2.0×240
②④	E12 735 936	CAPILLARY TUBE		2	2	2	2	2	2	2	2	ø3.0×ø1.8×600
②⑤	E12 838 704	DRAIN SOCKET		1	1	1	1	1	1	1	1	

MUZ-EF35VE -E1, E2, E3, E4, ER3, ER4, ET3, ET4
1-6. OUTDOOR UNIT ELECTRICAL PARTS



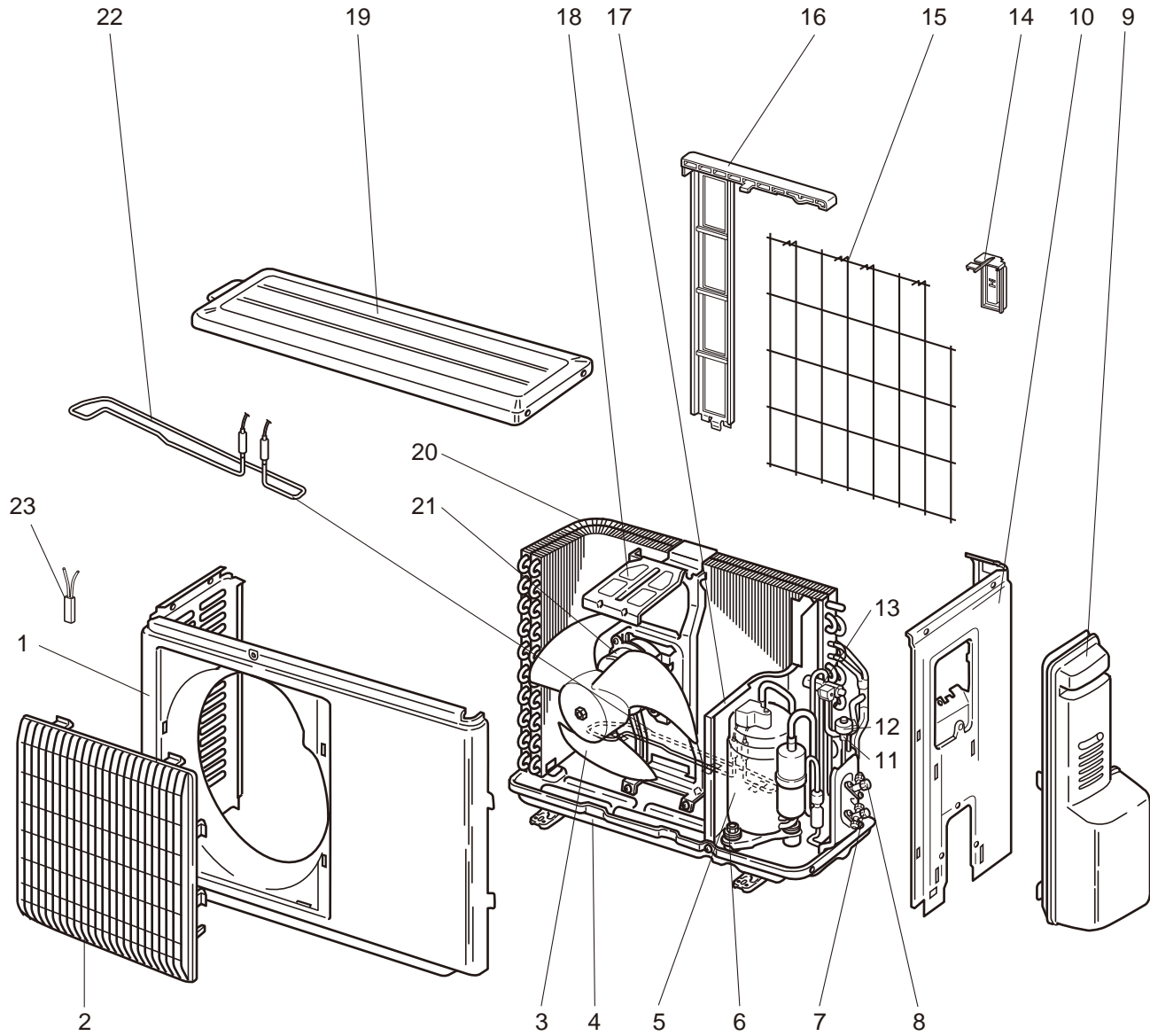


1-6. OUTDOOR UNIT ELECTRICAL PARTS

No.	Part No.	Part Name	Symbol in Wiring Diagram	Q'ty/unit								Remarks
				MUZ-EF35								
				VE-E1	VE-E2	VE-E3	VE-E4	VE-ER3	VE-ER4	VE-ET3	VE-ET4	
1	E12 G11 337	REACTOR	L61	1	1	1	1	1	1	1	1	
2	E12 C34 306	THERMISTOR SET	RT61, RT62	1	1	1	1	1	1	1	1	DEFROST, DISCHARGE
3	E12 G10 309	AMBIENT TEMPERATURE THERMISTOR	RT65	1	1	1	1	1	1	1	1	
4	E12 C34 307	OUTDOOR HEAT EXCHANGER TEMPERATURE THERMISTOR	RT68	1	1	1	1	1	1	1	1	
5	E12 G10 490	R.V. COIL	21S4	1	1	1	1	1	1	1	1	
6	E12 735 241	FUSE HOLDER		1	1	1	1	1	1	1	1	
7	E12 735 382	FUSE	F61	1	1	1	1	1	1	1	1	T20AL250V
8	E12 T95 374	TERMINAL BLOCK	TB	1	1	1	1	1	1	1	1	5 P
9	E12 G11 451	INVERTER P.C. BOARD		1	1	1		1		1		Includes heat sink and RT64
	E12 P04 451	INVERTER P.C. BOARD					1		1		1	

MUZ-EF35VEH - [E1], [E2], [E3], [ER2], [ER3], [ET2], [ET3]

1-7. OUTDOOR UNIT STRUCTURAL PARTS AND FUNCTIONAL PARTS

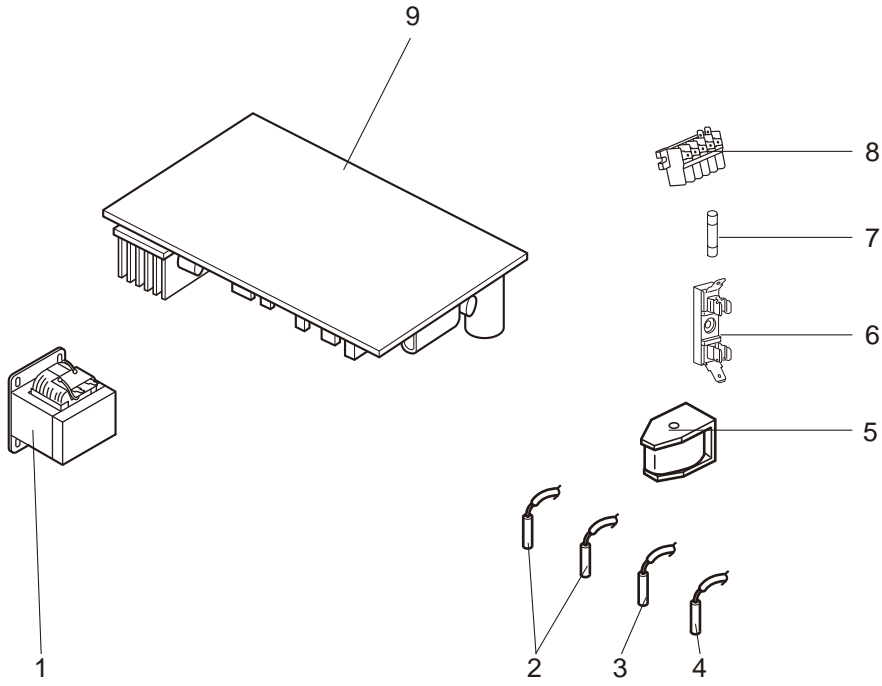


1-7. OUTDOOR UNIT STRUCTURAL PARTS AND FUNCTIONAL PARTS

Part numbers that are circled are not shown in the illustration.

No.	Part No.	Part Name	Symbol in Wiring Diagram	Q'ty/unit							Remarks
				MUZ-EF35							
				VEH- E1	VEH- E2	VEH- E3	VEH- ER2	VEH- ER3	VEH- ET2	VEH- ET3	
1	E12 927 232	CABINET		1	1	1	1	1	1	1	
2	E12 927 521	GRILLE		1	1	1	1	1	1	1	
3	E12 927 501	PROPELLER FAN		1	1	1	1	1	1	1	
4	E12 D70 290	BASE		1	1	1	1	1	1	1	
5	E12 G11 900	COMPRESSOR	MC	1	1	1	1	1	1	1	KNB092FFAMC
6	E12 065 506	COMPRESSOR RUBBER SET		3	3	3	3	3	3	3	3 RUBBERS/SET
7	E12 D69 661	STOP VALVE (GAS)		1	1	1	1	1	1	1	ø9.52
8	E12 D58 662	STOP VALVE (LIQUID)		1	1	1	1	1	1	1	ø6.35
9	E12 927 245	SERVICE PANEL		1	1	1	1	1	1	1	
10	E12 G14 233	BACK PANEL		1	1	1	1	1	1	1	
11	E12 927 640	EXPANSION VALVE		1	1	1	1	1	1	1	
12	E12 G10 493	EXPANSION VALVE COIL	LEV	1	1	1	1	1	1	1	
13	E12 927 961	4-WAY VALVE		1	1	1	1	1	1	1	
14	E12 930 079	THERMO HOLDER		1	1	1	1	1	1	1	
15	E12 930 525	CONDENSER WIRE NET		1	1	1	1	1	1	1	
16	E12 930 523	CONDENSER NET		1	1	1	1	1	1	1	
17	E12 G14 293	SEPARATOR		1	1	1	1	1	1	1	
18	E12 929 515	MOTOR SUPPORT		1	1	1	1	1	1	1	
19	E12 927 297	TOP PANEL		1	1	1	1	1	1	1	
20	E12 G11 630	OUTDOOR HEAT EXCHANGER		1	1	1	1	1	1	1	
21	E12 G11 301	OUTDOOR FAN MOTOR	MF	1	1		1		1		RC0J50-□□
	E12 P03 301	OUTDOOR FAN MOTOR	MF			1		1		1	RC0J50-□□
22	E12 C36 526	DEFROST HEATER	H	1	1	1	1	1	1	1	
23	E12 C36 381	HEATER PROTECTOR	26H	1	1	1	1	1	1	1	
②④	E12 927 937	CAPILLARY TUBE		1	1	1	1	1	1	1	ø3.0xø2.0x240
②⑤	E12 735 936	CAPILLARY TUBE		2	2	2	2	2	2	2	ø3.0xø1.8x600

MUZ-EF35VEH -E1, E2, E3, ER2, ER3, ET2, ET3
1-8. OUTDOOR UNIT ELECTRICAL PARTS



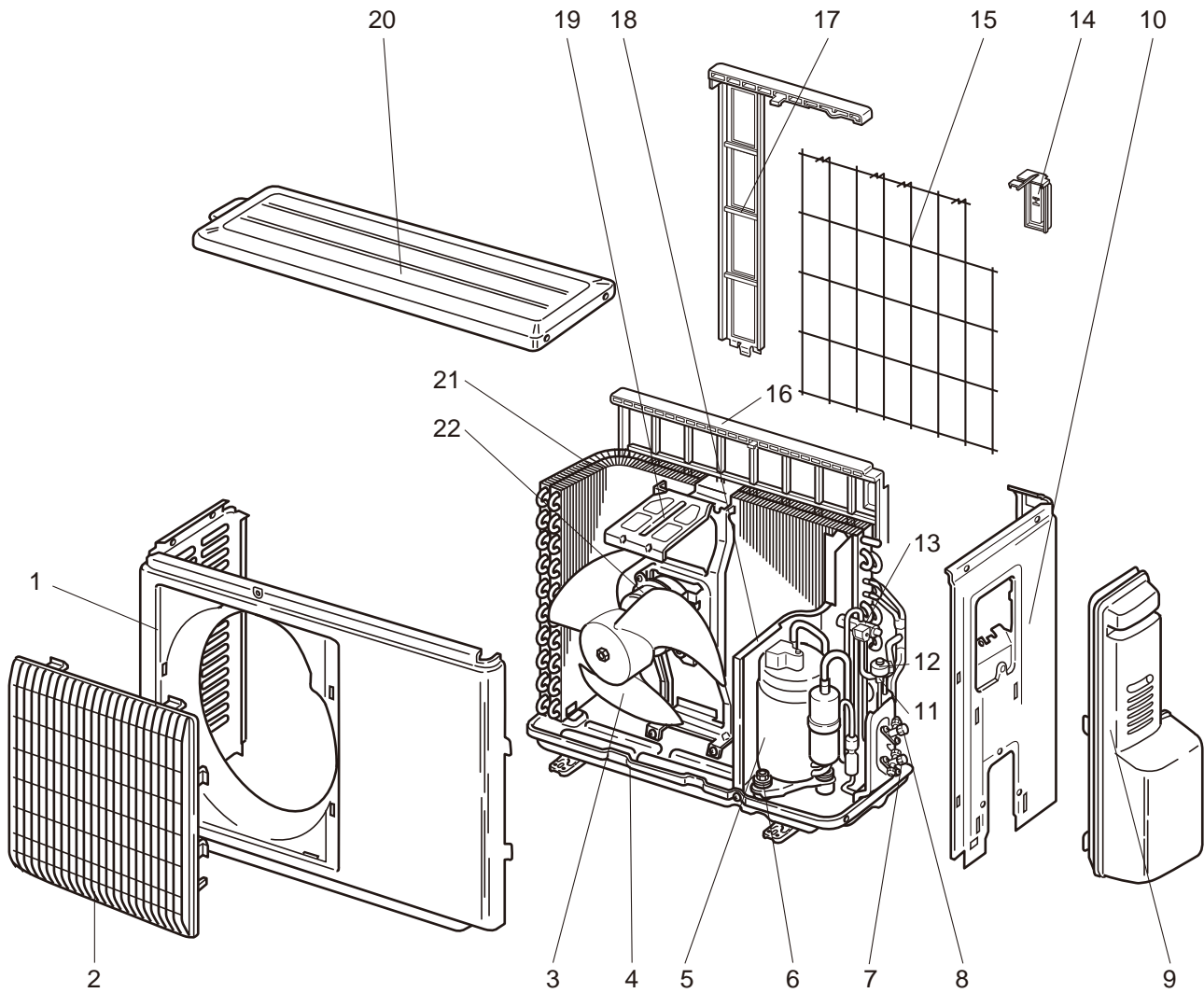


1-8. OUTDOOR UNIT ELECTRICAL PARTS

No.	Part No.	Part Name	Symbol in Wiring Diagram	Q'ty/unit							Remarks
				MUZ-EF35							
				VEH-E1	VEH-E2	VEH-E3	VEH-ER2	VEH-ER3	VEH-ET2	VEH-ET3	
1	E12 G11 337	REACTOR	L61	1	1	1	1	1	1	1	
2	E12 C34 306	THERMISTOR SET	RT61, RT62	1	1	1	1	1	1	1	DEFROST, DISCHARGE
3	E12 G10 309	AMBIENT TEMPERATURE THERMISTOR	RT65	1	1	1	1	1	1	1	
4	E12 C34 307	OUTDOOR HEAT EXCHANGER TEMPERATURE THERMISTOR	RT68	1	1	1	1	1	1	1	
5	E12 G10 490	R.V. COIL	21S4	1	1	1	1	1	1	1	
6	E12 735 241	FUSE HOLDER		1	1	1	1	1	1	1	
7	E12 735 382	FUSE	F61	1	1	1	1	1	1	1	T20AL250V
8	E12 T95 374	TERMINAL BLOCK	TB	1	1	1	1	1	1	1	5 P
9	E12 G14 451	INVERTER P.C. BOARD		1	1		1		1		Includes heat sink and RT64
	E12 P10 451	INVERTER P.C. BOARD				1		1		1	

MUZ-EF42VE -[E1], [E2], [E3], [E4], [ER3], [ER4], [ET3], [ET4]

1-9. OUTDOOR UNIT STRUCTURAL PARTS AND FUNCTIONAL PARTS



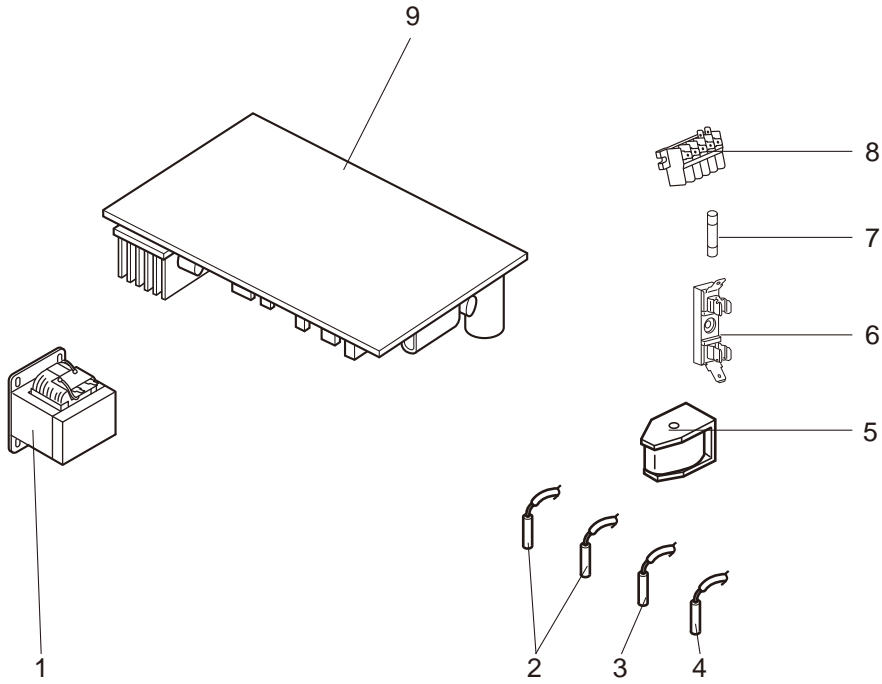
1-9. OUTDOOR UNIT STRUCTURAL PARTS AND FUNCTIONAL PARTS

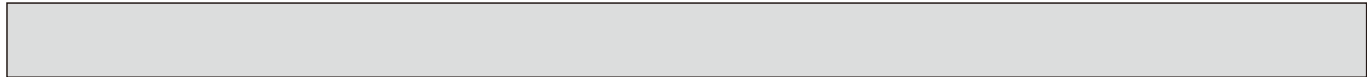
Part numbers that are circled are not shown in the illustration.

No.	Part No.	Part Name	Symbol in Wiring Diagram	Q'ty/unit								Remarks	
				MUZ-EF42									
				VE-E1	VE-E2	VE-E3	VE-E4	VE-ER3	VE-ER4	VE-ET3	VE-ET4		
1	E12 927 232	CABINET		1	1	1	1	1	1	1	1	1	
2	E12 927 521	GRILLE		1	1	1	1	1	1	1	1	1	
3	E12 927 501	PROPELLER FAN		1	1	1	1	1	1	1	1	1	
4	E12 D69 290	BASE		1	1	1	1	1	1	1	1	1	
5	E12 G12 900	COMPRESSOR	MC	1	1	1	1	1	1	1	1	1	SNB130FGAMT
6	E12 C34 506	COMPRESSOR RUBBER SET		3	3	3	3	3	3	3	3	3	3 RUBBERS/SET
7	E12 T95 661	STOP VALVE (GAS)		1	1	1	1	1	1	1	1	1	ø9.52
8	E12 T95 662	STOP VALVE (LIQUID)		1	1	1	1	1	1	1	1	1	ø6.35
9	E12 927 245	SERVICE PANEL		1	1	1	1	1	1	1	1	1	
10	E12 G15 233	BACK PANEL		1	1	1	1	1	1	1	1	1	
11	E12 A54 640	EXPANSION VALVE		1	1	1	1	1	1	1	1	1	
12	E12 G10 493	EXPANSION VALVE COIL	LEV	1	1	1	1	1	1	1	1	1	
13	E12 927 961	4-WAY VALVE		1	1	1	1	1	1	1	1	1	
14	E12 930 079	THERMO HOLDER				1	1	1	1	1	1	1	
15	E12 930 525	CONDENSER WIRE NET				1	1	1	1	1	1	1	
16	E12 929 523	CONDENSER NET		1	1								
17	E12 930 523	CONDENSER NET				1	1	1	1	1	1	1	
18	E12 G11 293	SEPARATOR		1	1	1	1	1	1	1	1	1	
19	E12 929 515	MOTOR SUPPORT		1	1	1	1	1	1	1	1	1	
20	E12 927 297	TOP PANEL		1	1	1	1	1	1	1	1	1	
21	E12 G12 630	OUTDOOR HEAT EXCHANGER		1	1	1	1	1	1	1	1	1	
22	E12 G11 301	OUTDOOR FAN MOTOR	MF	1	1	1		1		1			RC0J50-□□
	E12 P03 301	OUTDOOR FAN MOTOR	MF				1		1		1		RC0J50-□□
23	E12 927 937	CAPILLARY TUBE		1	1	1	1	1	1	1	1	1	ø3.0×ø2.0×240
24	E12 735 936	CAPILLARY TUBE		2	2	2	2	2	2	2	2	2	ø3.0×ø1.8×600
25	E12 838 704	DRAIN SOCKET		1	1	1	1	1	1	1	1	1	



MUZ-EF42VE -E1, E2, E3, E4, ER3, ER4, ET3, ET4
1-10. OUTDOOR UNIT ELECTRICAL PARTS



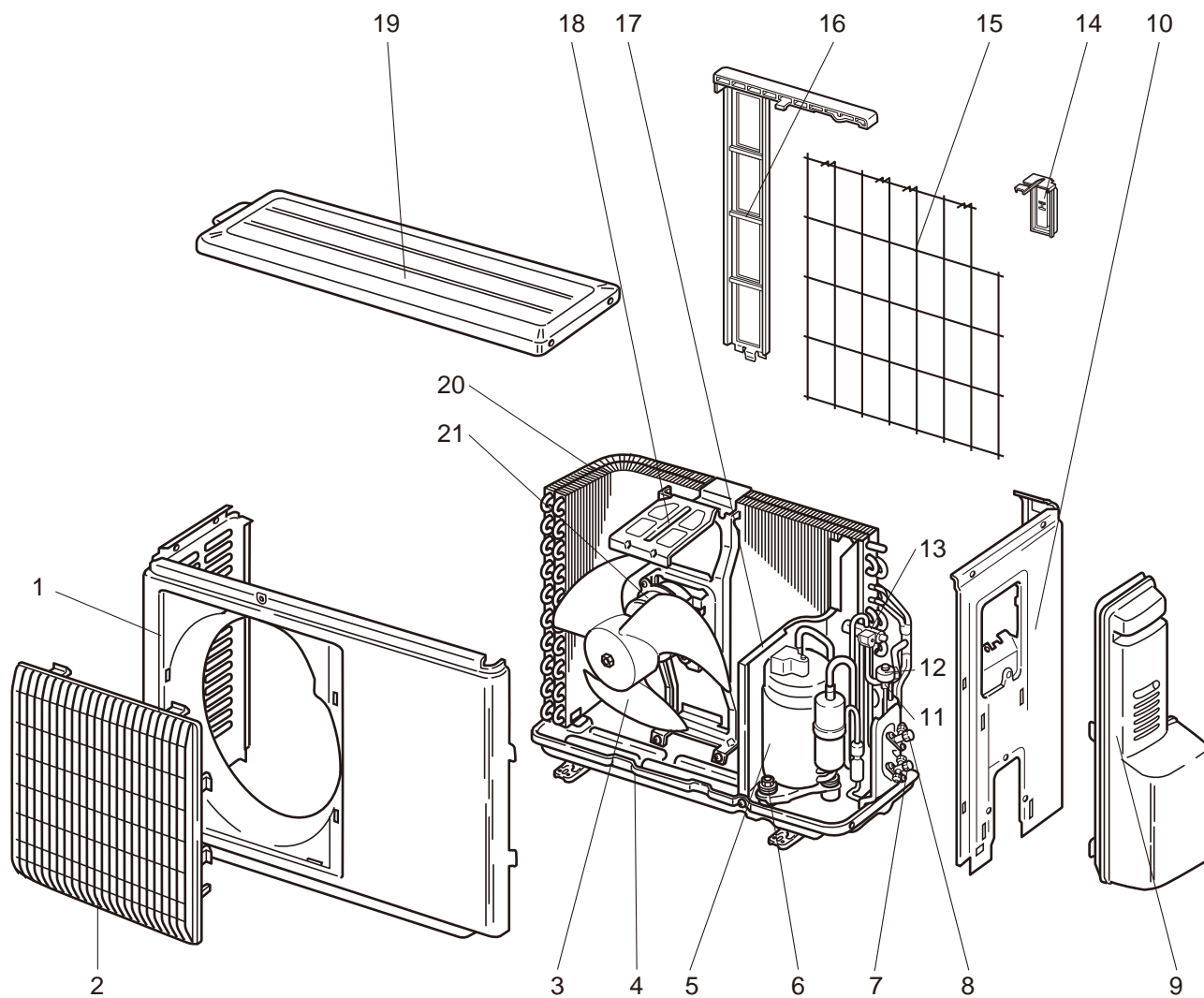


1-10. OUTDOOR UNIT ELECTRICAL PARTS

No.	Part No.	Part Name	Symbol in Wiring Diagram	Q'ty/unit								Remarks
				MUZ-EF42								
				VE-E1	VE-E2	VE-E3	VE-E4	VE-ER3	VE-ER4	VE-ET3	VE-ET4	
1	E12 G11 337	REACTOR	L61	1	1	1	1	1	1	1	1	
2	E12 C34 306	THERMISTOR SET	RT61, RT62	1	1	1	1	1	1	1	1	DEFROST, DISCHARGE
3	E12 G10 309	AMBIENT TEMPERATURE THERMISTOR	RT65	1	1	1	1	1	1	1	1	
4	E12 C34 307	OUTDOOR HEAT EXCHANGER TEMPERATURE THERMISTOR	RT68	1	1	1	1	1	1	1	1	
5	E12 G10 490	R.V. COIL	21S4	1	1	1	1	1	1	1	1	
6	E12 735 241	FUSE HOLDER		1	1	1	1	1	1	1	1	
7	E12 735 382	FUSE	F61	1	1	1	1	1	1	1	1	T20AL250V
8	E12 T95 374	TERMINAL BLOCK	TB	1	1	1	1	1	1	1	1	5 P
9	E12 G12 451	INVERTER P.C. BOARD		1	1	1		1		1		Includes heat sink and RT64
	E12 P05 451	INVERTER P.C. BOARD					1		1		1	

MUZ-EF25VE -[E5], [ER5], [ET5] MUZ-EF35VE -[E5], [ER5], [ET5] MUZ-EF42VE -[E5], [ER5], [ET5]

1-11. OUTDOOR UNIT STRUCTURAL PARTS AND FUNCTIONAL PARTS



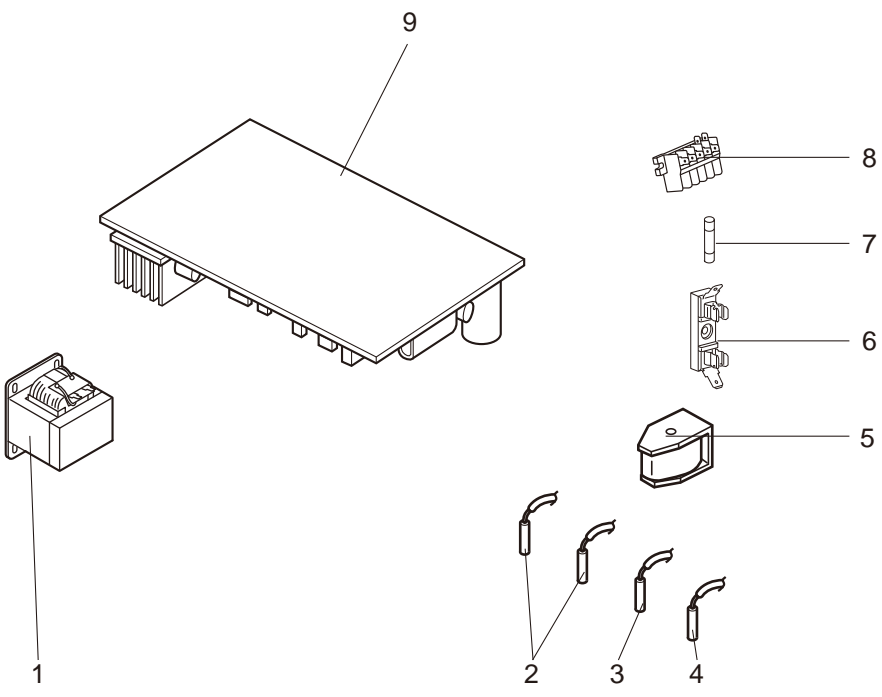
1-11. OUTDOOR UNIT STRUCTURAL PARTS AND FUNCTIONAL PARTS

Part numbers that are circled are not shown in the illustration.

No.	Part No.	Part Name	Symbol in Wiring Diagram	Q'ty/unit									Remarks	
				MUZ-EF25			MUZ-EF35			MUZ-EF42				
				VE- E5	VE- ER5	VE- ET5	VE- E5	VE- ER5	VE- ET5	VE- E5	VE- ER5	VE- ET5		
1	E22 927 232	CABINET		1	1	1	1	1	1	1	1	1	1	
2	E22 927 521	GRILLE		1	1	1	1	1	1	1	1	1	1	
3	E22 927 501	PROPELLER FAN		1	1	1	1	1	1	1	1	1	1	
4	E22 D69 290	BASE		1	1	1	1	1	1	1	1	1	1	
5	E22 G10 900	COMPRESSOR	MC	1	1	1								KNB073FKFMC
	E22 G11 900	COMPRESSOR	MC				1	1	1					KNB092FFAMC
	E22 G12 900	COMPRESSOR	MC							1	1	1		SNB130FGAMT
6	E22 065 506	COMPRESSOR RUBBER SET		3	3	3	3	3	3					3 RUBBERS/SET
	E22 C34 506	COMPRESSOR RUBBER SET								3	3	3		3 RUBBERS/SET
7	E22 D69 661	STOP VALVE (GAS)		1	1	1	1	1	1					ø9.52
	E22 T95 661	STOP VALVE (GAS)								1	1	1		ø9.52
8	E22 D58 662	STOP VALVE (LIQUID)		1	1	1	1	1	1					ø6.35
	E22 T95 662	STOP VALVE (LIQUID)								1	1	1		ø6.35
9	E22 927 245	SERVICE PANEL		1	1	1	1	1	1	1	1	1	1	
10	E22 G11 233	BACK PANEL		1	1	1								
	E22 G12 233	BACK PANEL					1	1	1					
	E22 G15 233	BACK PANEL								1	1	1		
11	E22 927 640	EXPANSION VALVE		1	1	1	1	1	1					
	E22 A54 640	EXPANSION VALVE								1	1	1		
12	E22 G10 493	EXPANSION VALVE COIL	LEV	1	1	1	1	1	1	1	1	1	1	
13	E22 927 961	4-WAY VALVE		1	1	1	1	1	1	1	1	1	1	
14	E22 928 079	THERMO HOLDER		1	1	1								
	E22 930 079	THERMO HOLDER					1	1	1	1	1	1	1	
15	E22 928 525	CONDENSER WIRE NET		1	1	1								
	E22 930 525	CONDENSER WIRE NET					1	1	1	1	1	1	1	
16	E22 928 523	CONDENSER NET		1	1	1								
	E22 930 523	CONDENSER NET					1	1	1	1	1	1	1	
17	E22 G10 293	SEPARATOR		1	1	1								
	E22 G11 293	SEPARATOR					1	1	1	1	1	1	1	
18	E22 927 515	MOTOR SUPPORT		1	1	1								
	E22 929 515	MOTOR SUPPORT					1	1	1	1	1	1	1	
19	E22 927 297	TOP PANEL		1	1	1	1	1	1	1	1	1	1	
20	E22 G10 630	OUTDOOR HEAT EXCHANGER		1	1	1								
	E22 G11 630	OUTDOOR HEAT EXCHANGER					1	1	1					
	E22 G12 630	OUTDOOR HEAT EXCHANGER								1	1	1		
21	E22 P03 301	OUTDOOR FAN MOTOR	MF	1	1	1	1	1	1	1	1	1	1	RC0J50-□□
22	E22 927 937	CAPILLARY TUBE		1	1	1	1	1	1	1	1	1	1	ø3.0xø2.0x240
23	E22 735 936	CAPILLARY TUBE					2	2	2	2	2	2	2	ø3.0xø1.8x600
24	E22 838 704	DRAIN SOCKET		1	1	1	1	1	1	1	1	1	1	



MUZ-EF25VE -[E5], [ER5], [ET5] MUZ-EF35VE -[E5], [ER5], [ET5] MUZ-EF42VE -[E5], [ER5], [ET5]
1-12. OUTDOOR UNIT ELECTRICAL PARTS



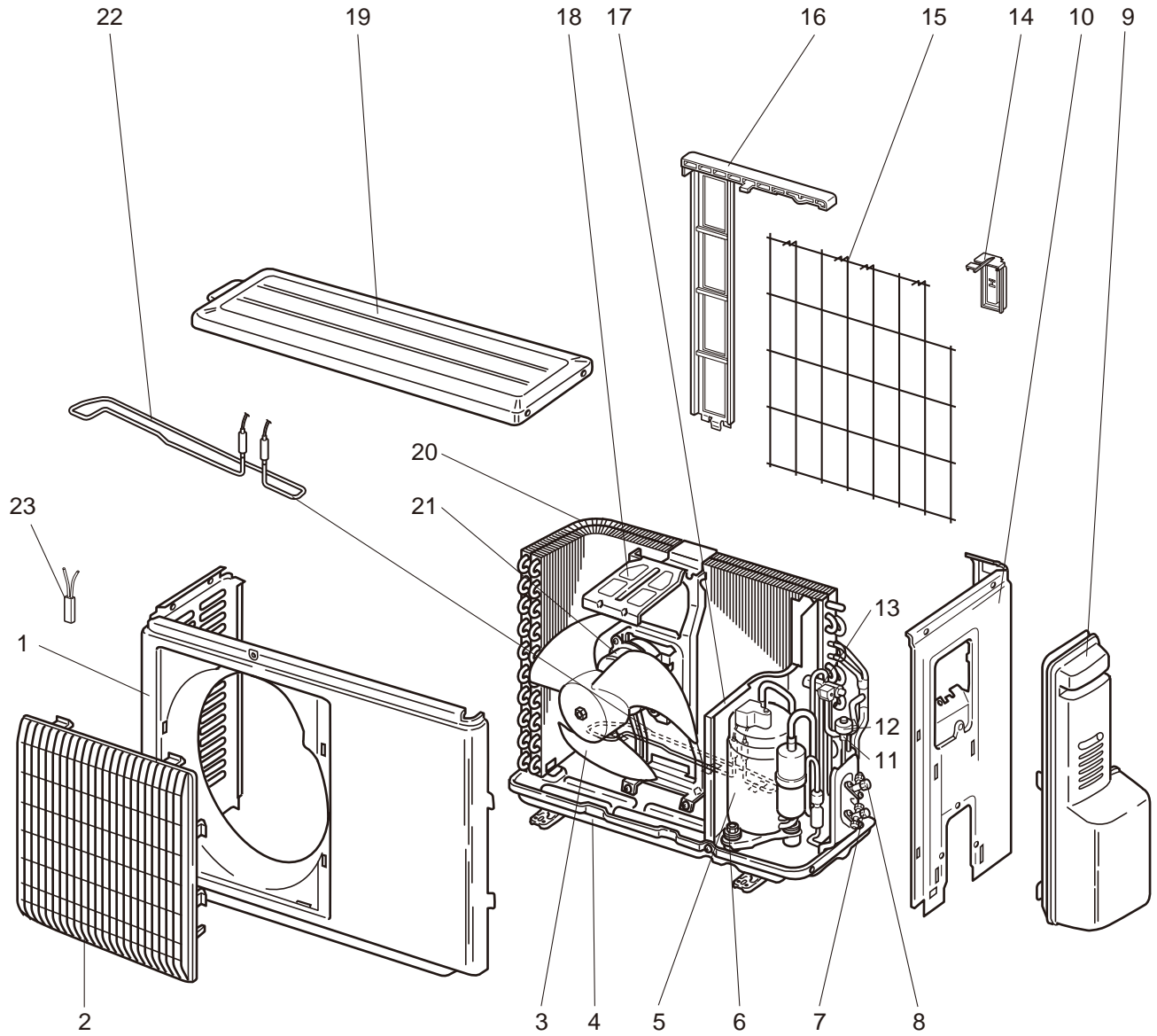


1-12. OUTDOOR UNIT ELECTRICAL PARTS

No.	Part No.	Part Name	Symbol in Wiring Diagram	Q'ty/unit									Remarks
				MUZ-EF25			MUZ-EF35			MUZ-EF42			
				VE- E5	VE- ER5	VE- ET5	VE- E5	VE- ER5	VE- ET5	VE- E5	VE- ER5	VE- ET5	
1	E22 G10 337	REACTOR	L61	1	1	1							
	E22 G11 337	REACTOR	L61				1	1	1	1	1	1	
2	E22 C34 306	THERMISTOR SET	RT61, RT62	1	1	1	1	1	1	1	1	1	DEFROST, DISCHARGE
3	E22 G10 309	AMBIENT TEMPERA- TURE THERMISTOR	RT65	1	1	1	1	1	1	1	1	1	
4	E22 C34 307	OUTDOOR HEAT EX- CHANGER TEMPERA- TURE THERMISTOR	RT68	1	1	1	1	1	1	1	1	1	
5	E22 G10 490	R.V. COIL	21S4	1	1	1	1	1	1	1	1	1	
6	E22 735 241	FUSE HOLDER		1	1	1	1	1	1	1	1	1	
7	E22 735 382	FUSE	F61	1	1	1	1	1	1	1	1	1	T20AL250V
8	E22 T95 374	TERMINAL BLOCK	TB	1	1	1	1	1	1	1	1	1	5 P
9	E22 P03 451	INVERTER P.C. BOARD		1	1	1							Includes heat sink and RT64
	E22 P04 451	INVERTER P.C. BOARD					1	1	1				
	E22 P05 451	INVERTER P.C. BOARD								1	1	1	

MUZ-EF25VEH -E4 MUZ-EF35VEH -E4

1-13. OUTDOOR UNIT STRUCTURAL PARTS AND FUNCTIONAL PARTS



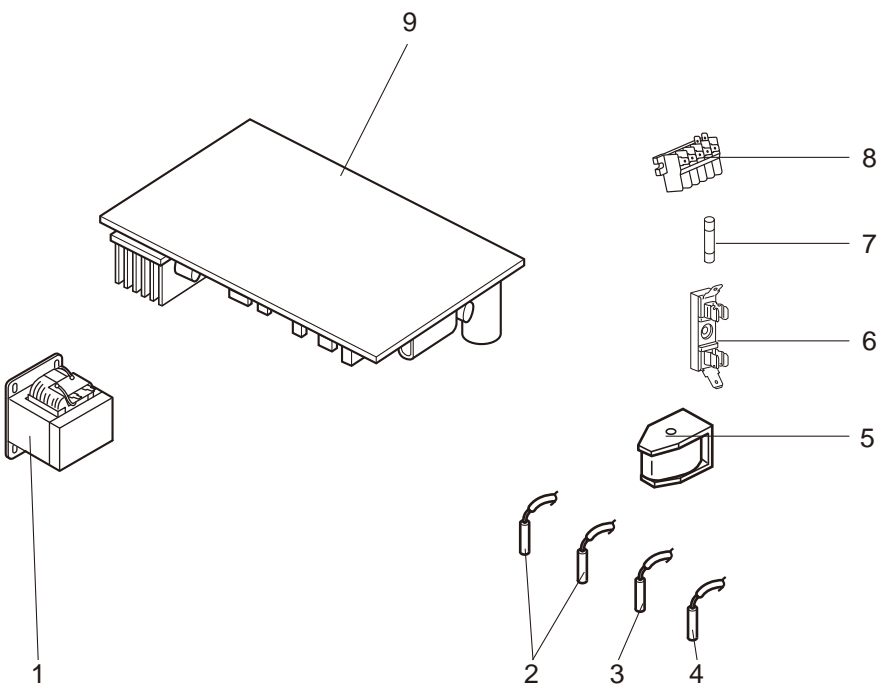
1-13. OUTDOOR UNIT STRUCTURAL PARTS AND FUNCTIONAL PARTS

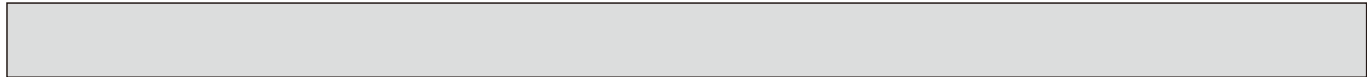
Part numbers that are circled are not shown in the illustration.

No.	Part No.	Part Name	Symbol in Wiring Diagram	Q'ty/unit		Remarks
				MUZ-EF25	MUZ-EF35	
				VEH- ^[E4]	VEH- ^[E4]	
1	E22 927 232	CABINET		1	1	
2	E22 927 521	GRILLE		1	1	
3	E22 927 501	PROPELLER FAN		1	1	
4	E22 D70 290	BASE		1	1	
5	E22 G10 900	COMPRESSOR	MC	1		KNB073FKFMC
	E22 G11 900	COMPRESSOR	MC		1	KNB092FFAMC
6	E22 065 506	COMPRESSOR RUBBER SET		3	3	3 RUBBERS/SET
7	E22 D69 661	STOP VALVE (GAS)		1	1	ø9.52
8	E22 D58 662	STOP VALVE (LIQUID)		1	1	ø6.35
9	E22 927 245	SERVICE PANEL		1	1	
10	E22 G13 233	BACK PANEL		1		
	E22 G14 233	BACK PANEL			1	
11	E22 927 640	EXPANSION VALVE		1	1	
12	E22 G10 493	EXPANSION VALVE COIL	LEV	1	1	
13	E22 927 961	4-WAY VALVE		1	1	
14	E22 928 079	THERMO HOLDER		1		
	E22 930 079	THERMO HOLDER			1	
15	E22 928 525	CONDENSER WIRE NET		1		
	E22 930 525	CONDENSER WIRE NET			1	
16	E22 928 523	CONDENSER NET		1		
	E22 930 523	CONDENSER NET			1	
17	E22 G13 293	SEPARATOR		1		
	E22 G14 293	SEPARATOR			1	
18	E22 927 515	MOTOR SUPPORT		1		
	E22 929 515	MOTOR SUPPORT			1	
19	E22 927 297	TOP PANEL		1	1	
20	E22 G10 630	OUTDOOR HEAT EXCHANGER		1		
	E22 G11 630	OUTDOOR HEAT EXCHANGER			1	
21	E22 P03 301	OUTDOOR FAN MOTOR	MF	1	1	RC0J50-□□
22	E22 C36 526	DEFROST HEATER	H	1	1	
23	E22 C36 381	HEATER PROTECTOR	26H	1	1	
②④	E22 927 937	CAPILLARY TUBE		1	1	ø3.0×ø2.0×240
②⑤	E22 735 936	CAPILLARY TUBE			2	ø3.0×ø1.8×600



MUZ-EF25VEH -E4 MUZ-EF35VEH -E4
1-14. OUTDOOR UNIT ELECTRICAL PARTS



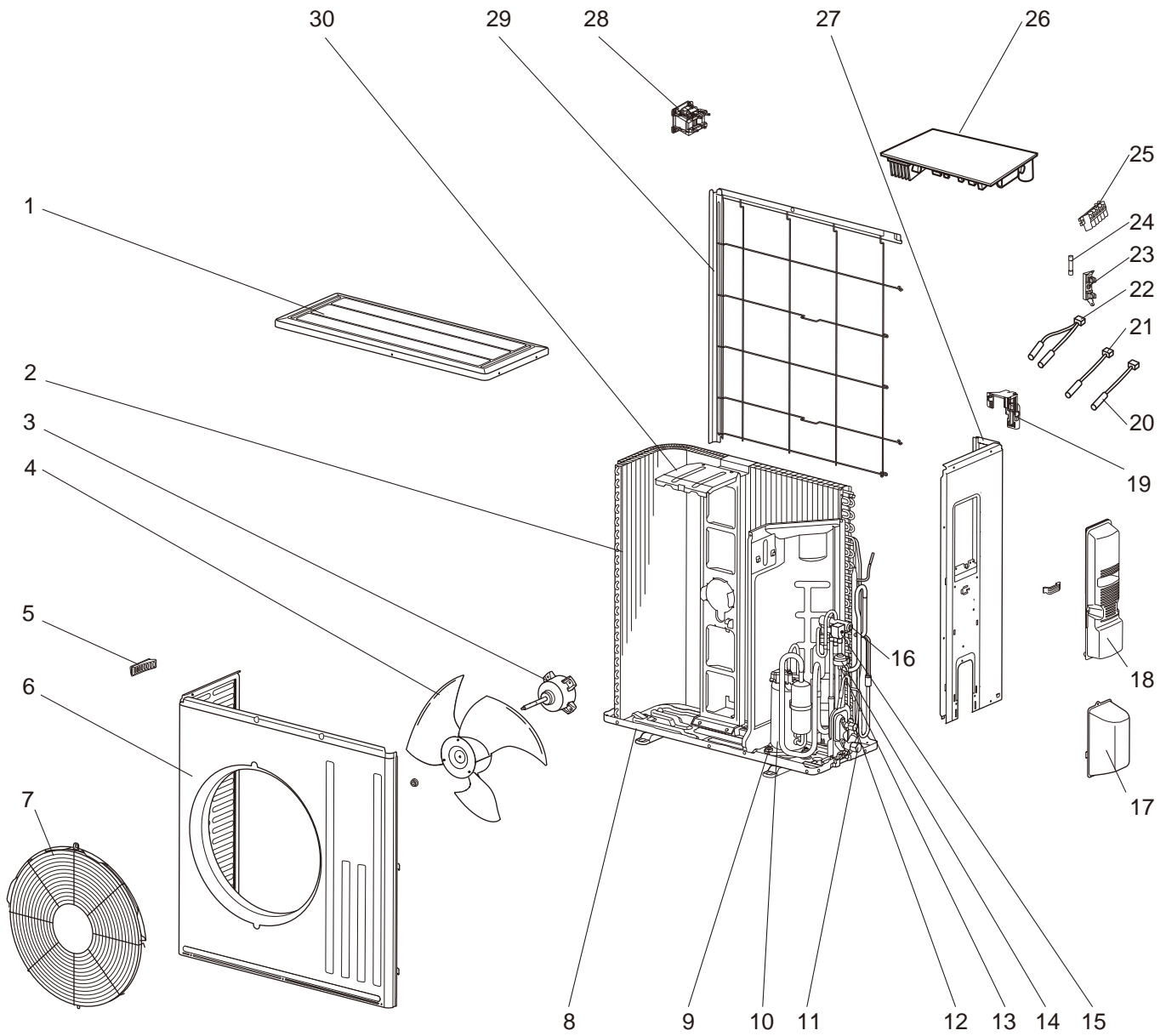


1-14. OUTDOOR UNIT ELECTRICAL PARTS

No.	Part No.	Part Name	Symbol in Wiring Diagram	Q'ty/unit		Remarks
				MUZ-EF25	MUZ-EF35	
				VEH-[E4]	VEH-[E4]	
1	E22 G10 337	REACTOR	L61	1		
	E22 G11 337	REACTOR	L61		1	
2	E22 C34 306	THERMISTOR SET	RT61, RT62	1	1	DEFROST, DISCHARGE
3	E22 G10 309	AMBIENT TEMPERATURE THERMISTOR	RT65	1	1	
4	E22 C34 307	OUTDOOR HEAT EXCHANG- ER TEMPERATURE THER- MISTOR	RT68	1	1	
5	E22 G10 490	R.V. COIL	21S4	1	1	
6	E22 735 241	FUSE HOLDER		1	1	
7	E22 735 382	FUSE	F61	1	1	T20AL250V
8	E22 T95 374	TERMINAL BLOCK	TB	1	1	5 P
9	E22 P09 451	INVERTER P.C. BOARD		1		Includes heat sink and RT64
	E22 P10 451	INVERTER P.C. BOARD			1	

MUZ-EF50VE -[E1], [E2], [ER2], [ET2]

1-15. OUTDOOR UNIT STRUCTURAL PARTS, ELECTRICAL PARTS AND FUNCTIONAL PARTS



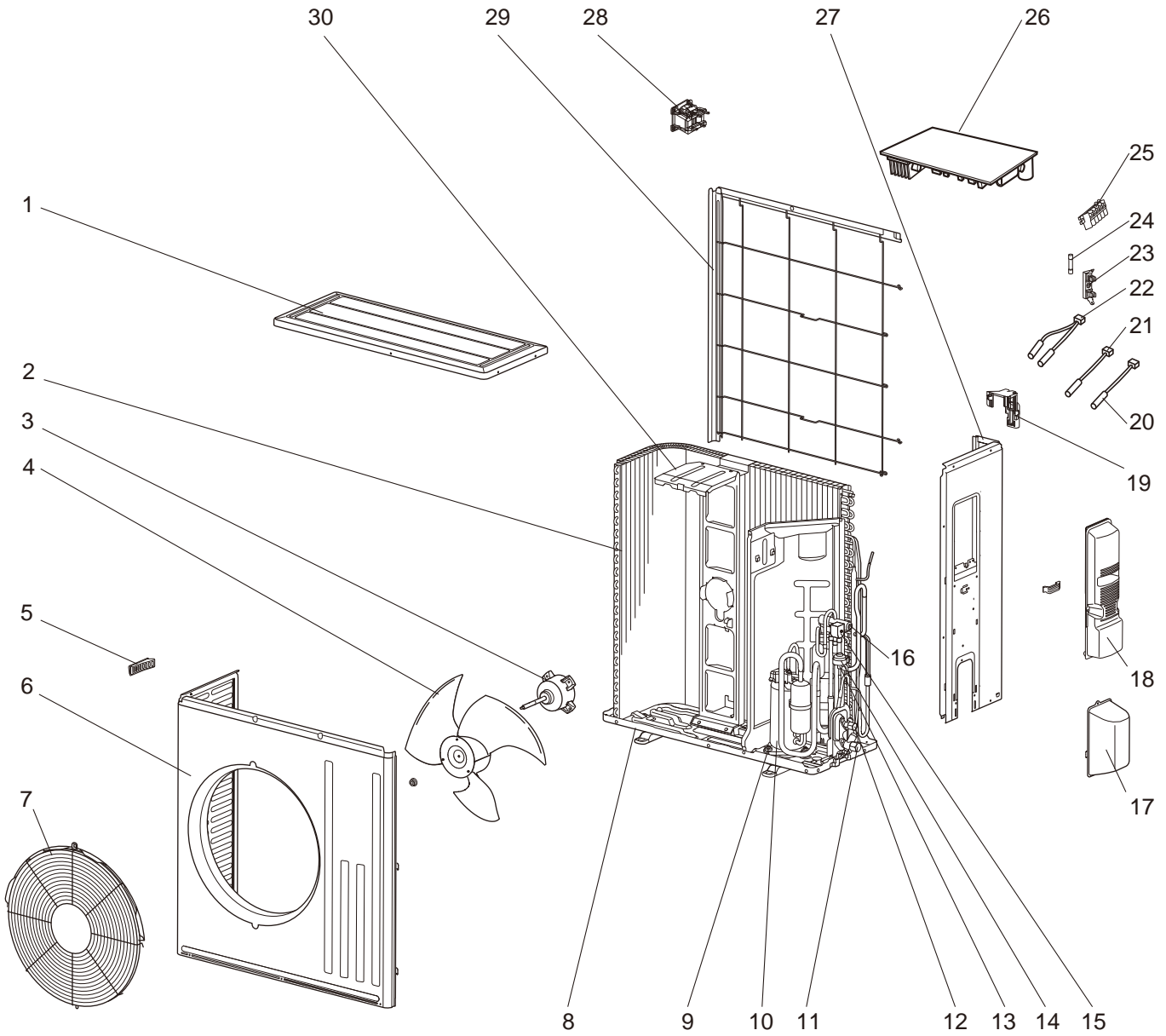
1-15. OUTDOOR UNIT STRUCTURAL PARTS, ELECTRICAL PARTS AND FUNCTIONAL PARTS

Part numbers that are circled are not shown in the illustration.

No.	Part No.	Part Name	Symbol in Wiring Diagram	Q'ty/unit				Remarks
				MUZ-EF50				
				VE- <u>E1</u>	VE- <u>E2</u>	VE- <u>ER2</u>	VE- <u>ET2</u>	
1	E12 L87 297	TOP PANEL		1	1	1	1	
2	E12 G16 630	OUTDOOR HEAT EXCHANGER		1	1	1	1	
3	E12 G16 301	OUTDOOR FAN MOTOR	MF	1	1	1	1	RC0J60-□□
4	E12 F28 501	PROPELLER FAN		1	1	1	1	
5	E12 817 009	HANDLE		1	1	1	1	
6	E12 N87 232	CABINET		1	1	1	1	
7	E12 F73 521	FAN GUARD		1	1	1	1	Includes ice guard
8	E12 F28 290	BASE		1	1	1	1	
9	E12 C34 506	COMPRESSOR RUBBER SET		3	3	3	3	3 RUBBERS/SET
10	E12 F28 900	COMPRESSOR	MC	1	1	1	1	SNB130FGBMT
11	E12 G16 661	STOP VALVE (GAS)		1	1	1	1	ø12.7
12	E12 G16 662	STOP VALVE (LIQUID)		1	1	1	1	ø6.35
13	E12 851 640	EXPANSION VALVE		1	1	1	1	
14	E12 F28 493	EXPANSION VALVE COIL	LEV	1	1	1	1	
15	E12 G16 490	R.V. COIL	21S4	1	1	1	1	
16	E12 C18 961	4-WAY VALVE		1	1	1	1	
17	E12 F28 650	VALVE COVER		1	1	1	1	
18	E12 G16 245	SERVICE PANEL		1	1	1	1	
19	E12 F28 079	THERMO HOLDER		1	1	1	1	
20	E12 G16 309	AMBIENT TEMPERATURE THERMISTOR	RT65	1	1	1	1	
21	E12 G16 307	OUTDOOR HEAT EXCHANGER TEMPERATURE THERMISTOR	RT68	1	1	1	1	
22	E12 G16 308	THERMISTOR SET	RT61,RT62	1	1	1	1	DEFROST, DISCHARGE
23	E12 735 241	FUSE HOLDER		1	1	1	1	
24	E12 735 382	FUSE	F61	1	1	1	1	T20AL250V
25	E12 T95 374	TERMINAL BLOCK	TB	1	1	1	1	5 P
26	E12 K36 451	INVERTER P.C. BOARD		1	1	1	1	Includes heat sink and RT64
27	E12 F28 233	BACK PANEL (OUT)		1	1	1	1	
28	E12 D58 337	REACTOR	L61	1	1	1	1	
29	E12 L87 523	CONDENSER NET		1	1	1	1	
30	E12 F28 515	MOTOR SUPPORT		1	1	1	1	
③1	E12 527 936	CAPILLARY TUBE		1	1	1	1	ø4.0 × ø2.4 × 100
③2	E12 F28 704	DRAIN SOCKET		1	1	1	1	

MUZ-EF50VE -[E3], [ER3], [ET3]

1-16. OUTDOOR UNIT STRUCTURAL PARTS, ELECTRICAL PARTS AND FUNCTIONAL PARTS



1-16. OUTDOOR UNIT STRUCTURAL PARTS, ELECTRICAL PARTS AND FUNCTIONAL PARTS

Part numbers that are circled are not shown in the illustration.

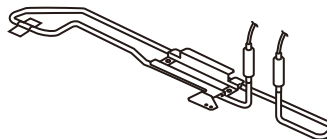
No.	Part No.	Part Name	Symbol in Wiring Diagram	Q'ty/unit			Remarks
				MUZ-EF50			
				VE- <u>E3</u>	VE- <u>ER3</u>	VE- <u>ET3</u>	
1	E22 L87 297	TOP PANEL		1	1	1	
2	E22 G16 630	OUTDOOR HEAT EXCHANGER		1	1	1	
3	E22 G16 301	OUTDOOR FAN MOTOR	MF	1	1	1	RC0J60-□□
4	E22 F28 501	PROPELLER FAN		1	1	1	
5	E22 817 009	HANDLE		1	1	1	
6	E22 N87 232	CABINET		1	1	1	
7	E22 F73 521	FAN GUARD		1	1	1	Includes ice guard
8	E22 F28 290	BASE		1	1	1	
9	E22 C34 506	COMPRESSOR RUBBER SET		3	3	3	3 RUBBERS/SET
10	E22 F28 900	COMPRESSOR	MC	1	1	1	SNB130FGBMT
11	E22 G16 661	STOP VALVE (GAS)		1	1	1	∅12.7
12	E22 G16 662	STOP VALVE (LIQUID)		1	1	1	∅6.35
13	E22 851 640	EXPANSION VALVE		1	1	1	
14	E22 F28 493	EXPANSION VALVE COIL	LEV	1	1	1	
15	E22 G16 490	R.V. COIL	21S4	1	1	1	
16	E22 C18 961	4-WAY VALVE		1	1	1	
17	E22 F28 650	VALVE COVER		1	1	1	
18	E22 G16 245	SERVICE PANEL		1	1	1	
19	E22 F28 079	THERMO HOLDER		1	1	1	
20	E22 G16 309	AMBIENT TEMPERATURE THERMISTOR	RT65	1	1	1	
21	E22 G16 307	OUTDOOR HEAT EXCHANGER TEMPERATURE THERMISTOR	RT68	1	1	1	
22	E22 G16 308	THERMISTOR SET	RT61,RT62	1	1	1	DEFROST, DISCHARGE
23	E22 735 241	FUSE HOLDER		1	1	1	
24	E22 735 382	FUSE	F61	1	1	1	T20AL250V
25	E22 T95 374	TERMINAL BLOCK	TB	1	1	1	5 P
26	E22 K36 451	INVERTER P.C. BOARD		1	1	1	Includes heat sink and RT64
27	E22 F28 233	BACK PANEL (OUT)		1	1	1	
28	E22 D58 337	REACTOR	L61	1	1	1	
29	E22 L87 523	CONDENSER NET		1	1	1	
30	E22 F28 515	MOTOR SUPPORT		1	1	1	
③1	E22 527 936	CAPILLARY TUBE		1	1	1	∅4.0 × ∅2.4 × 100
③2	E22 F28 704	DRAIN SOCKET		1	1	1	

2

OPTIONAL PARTS

2-1. DEFROST HEATER

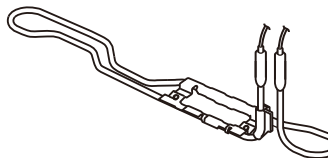
Model	Parts No.
MUZ-EF42VE	MAC-643BH-E



Components

① Defrost heater	1	④ Cable tie	1	⑦ Wiring diagram	1
② Aluminum tape	1	⑤ Self drilling screw	2	⑧ Spec label	1
③ Heater support	1	⑥ Insulation	1		

Model	Parts No.
MUZ-EF50VE	MAC-644BH-E



Components

① Defrost heater	1	④ Cable clamp	1	⑦ Spec label	1
② Heater support	1	⑤ Self drilling screw	2		
③ Insulation	1	⑥ Wiring diagram	1		

NOTE:

- Attaching the Freeze-prevention heater "MAC-643BH-E Anti-Freeze Heater" (for drain pan) to MUZ-EF25/35VE requires installation of the INVERTER P.C. BOARD for MUZ-EF25/35VEH. Order the INVERTER P.C. BOARD for MUZ-EF25/35VEH as needed.
- Refer to the installation manual for the installation.

MITSUBISHI ELECTRIC CORPORATION

HEAD OFFICE: TOKYO BUILDING, 2-7-3, MARUNOUCHI, CHIYODA-KU, TOKYO 100-8310, JAPAN

© Copyright 2010 MITSUBISHI ELECTRIC CORPORATION

Issued: Jul. 2019. No. OBB590 REVISED EDITION-G

Issued: Dec. 2015. No. OBB590 REVISED EDITION-F

Issued: Oct. 2014. No. OBB590 REVISED EDITION-E

Issued: Aug. 2014. No. OBB590 REVISED EDITION-D

Issued: Jan. 2014. No. OBB590 REVISED EDITION-C

Issued: Nov. 2012. No. OBB590 REVISED EDITION-B

Issued: Mar. 2011. No. OBB590 REVISED EDITION-A

Published: Nov. 2010. No. OBB590

Made in Japan

Specifications are subject to change without notice.