

# INDOOR UNIT PARTS CATALOG

**No. OBB634  
REVISED EDITION-C**

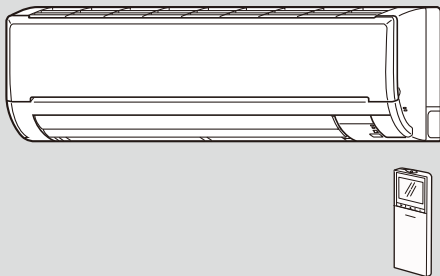
## Models

**MSZ-GF60VE** - **E1**, **ER1**

**MSZ-GF60VE2** - **E1**, **ER1**

**MSZ-GF71VE** - **E1**, **ER1**

**MSZ-GF71VE2** - **E1**, **ER1**



## CONTENTS

1. SERVICE PARTS LIST..... 2
2. OPTIONAL PARTS..... 10

**SERVICE MANUAL (OBH634)**

**Revision A:**

• MSZ-GF60VE-**ER1** and MSZ-GF71VE-**ER1** have been added.

**Revision B:**

• MSZ-GF60VE2-**E1**, **ER1** and MSZ-GF71VE2-**E1**, **ER1** have been added.

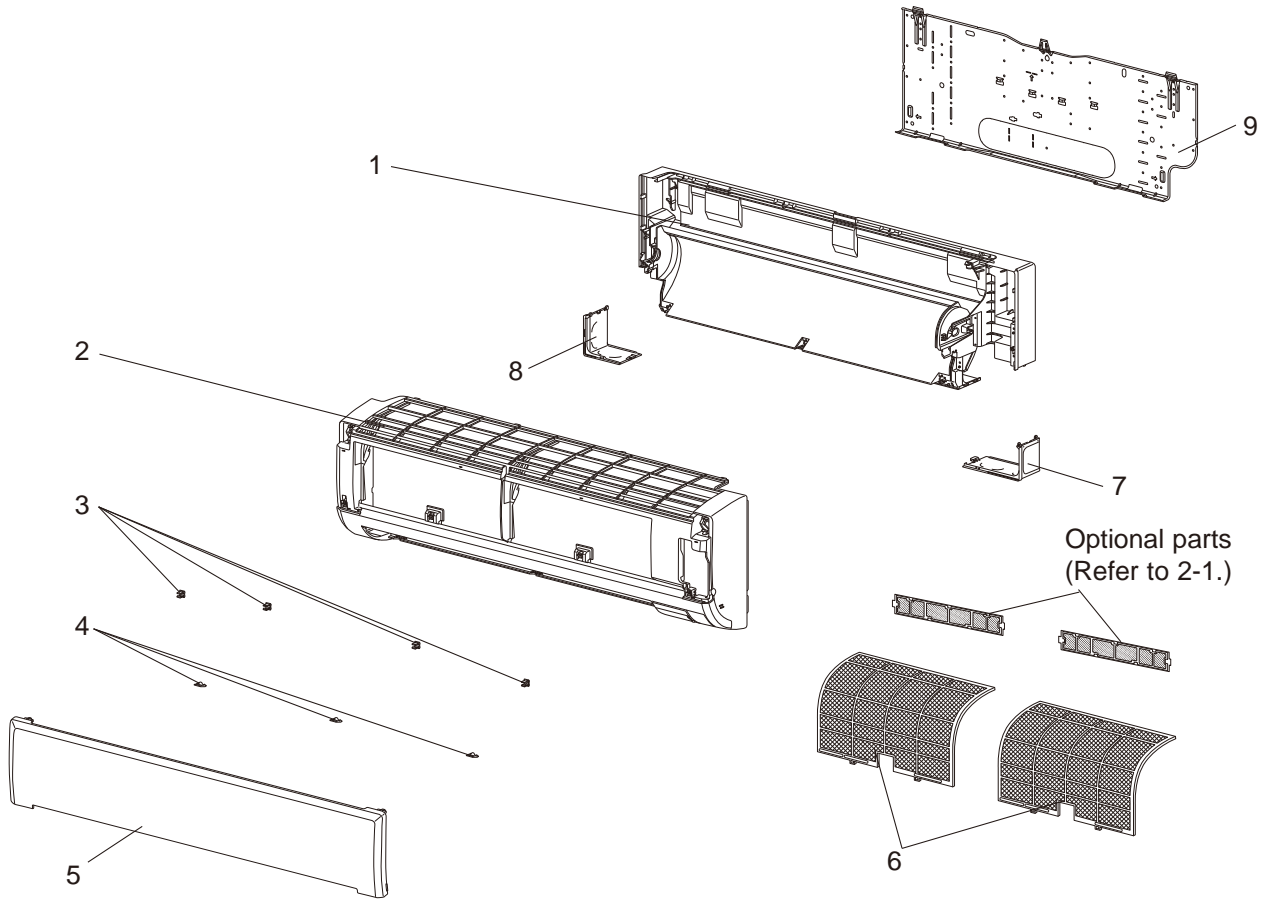
**Revision C:**

• Some descriptions have been modified.

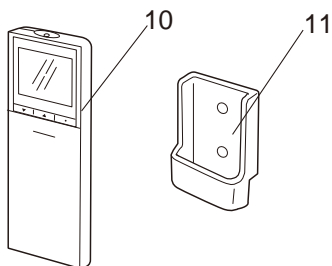
**1 SERVICE PARTS LIST**

**MSZ-GF60VE MSZ-GF71VE**

**1-1. INDOOR UNIT STRUCTURAL PARTS**



**1-2. ACCESSORY AND REMOTE CONTROLLER**





### 1-1. INDOOR UNIT STRUCTURAL PARTS

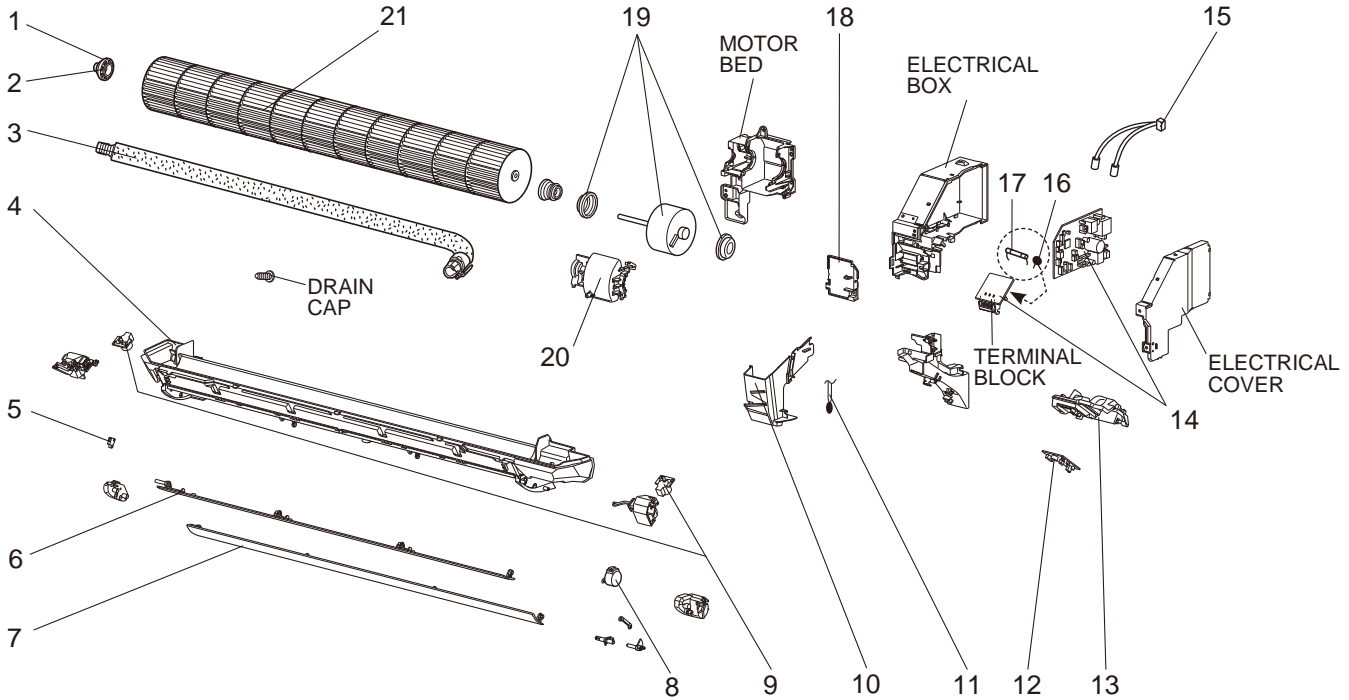
No.	Part No.	Part name	Symbol in Wiring Diagram	Q'ty/unit				Remarks
				MSZ-GF				
				60VE- <u>E1</u>	60VE- <u>ER1</u>	71VE- <u>E1</u>	71VE- <u>ER1</u>	
1	E12 J94 234	BOX ASSEMBLY		1	1	1	1	
2	E12 F28 000	PANEL ASSEMBLY		1	1	1	1	Includes No. 3, 4, and 5
3	E12 408 142	CATCH		4	4	4	4	4 PCS/SET
4	E12 F28 067	SCREW CAP		3	3	3	3	3 PCS/SET
5	E12 F28 010	FRONT PANEL		1	1	1	1	
6	E12 F28 100	NANO PLATINUM FILTER		2	2	2	2	1 PC/SET
7	E12 F28 975	CORNER BOX (RIGHT)		1	1	1	1	
8	E12 F28 976	CORNER BOX (LEFT)		1	1	1	1	
9	E12 F28 970	INSTALLATION PLATE		1	1	1	1	

### 1-2. ACCESSORY AND REMOTE CONTROLLER

No.	Part No.	Part name	Symbol in Wiring Diagram	Q'ty/unit				Remarks
				MSZ-GF				
				60VE- <u>E1</u>	60VE- <u>ER1</u>	71VE- <u>E1</u>	71VE- <u>ER1</u>	
10	E12 J61 426	REMOTE CONTROLLER		1	1	1	1	SG12D
11	E12 F28 083	REMOTE CONTROLLER HOLDER		1	1	1	1	

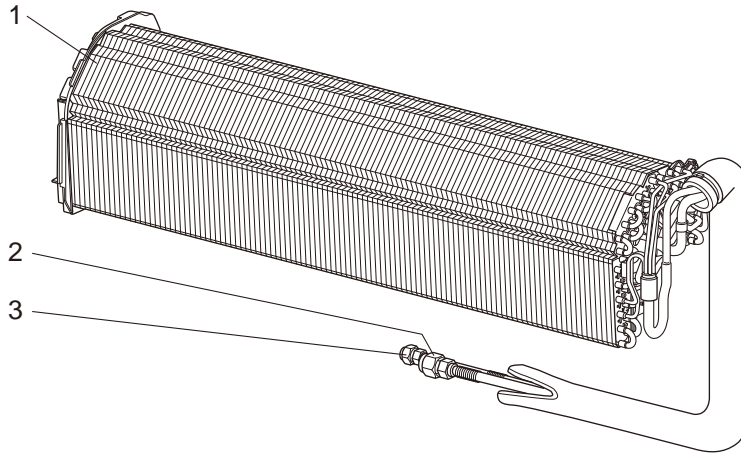
# MSZ-GF60VE MSZ-GF71VE

## 1-3. INDOOR UNIT ELECTRICAL PARTS AND FUNCTIONAL PARTS



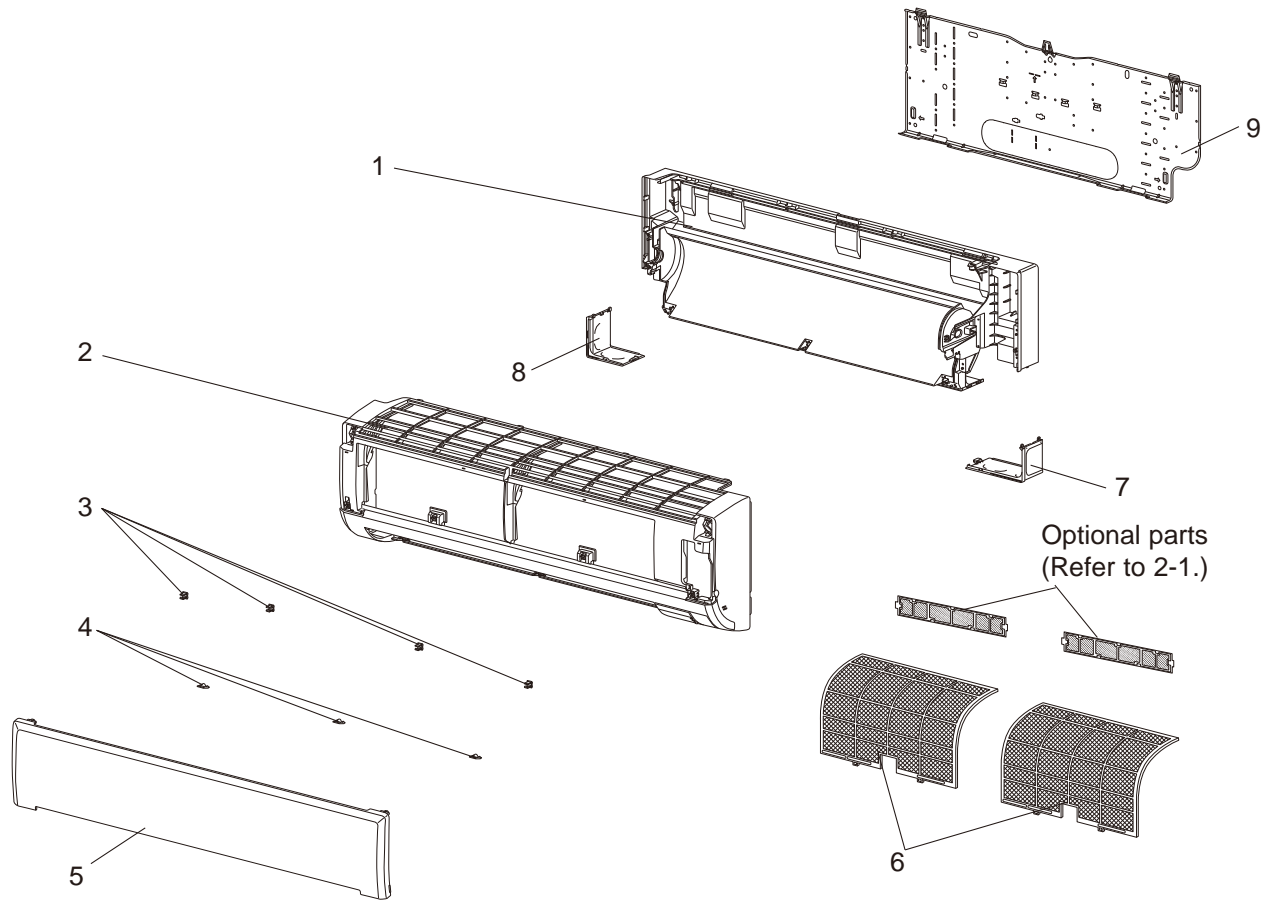
No.	Part No.	Part name	Symbol in Wiring Diagram	Q'ty/unit				Remarks
				MSZ-GF				
				60VE-E1	60VE-ER1	71VE-E1	71VE-ER1	
1	E12 751 509	BEARING MOUNT		1	1	1	1	
2	E12 001 504	SLEEVE BEARING		1	1	1	1	
3	E12 408 702	DRAIN HOSE		1	1	1	1	
4	E12 F31 235	NOZZLE ASSEMBLY		1	1	1	1	
5	E12 F28 316	INTERLOCK SWITCH (FAN)		1	1	1	1	
6	E12 F28 040	VANE (UPPER)		1	1	1	1	
7	E12 F28 041	VANE (LOWER)		1	1	1	1	
8	E12 C33 303	VANE MOTOR (HORIZONTAL)	MV1	1	1	1	1	UP & DOWN
9	E12 C32 303	VANE MOTOR (VERTICAL)	MV2	2	2	2	2	RIGHT & LEFT
10	E12 F28 541	WATER CUT		1	1	1	1	
11	E12 C32 308	ROOM TEMPERATURE THERMISTOR	RT11	1	1	1	1	
12	E12 F28 468	POWER MONITOR RECEIVER SW P.C. BOARD		1	1	1	1	
13	E12 F28 095	POWER MONITOR RECEIVER HOLDER		1	1	1	1	
14	E12 J61 452	ELECTRONIC CONTROL P.C. BOARD		1	1			Includes TERMINAL BLOCK with TERMINAL P.C. BOARD
	E12 J62 452	ELECTRONIC CONTROL P.C. BOARD				1	1	
15	E12 F28 307	INDOOR COIL THERMISTOR	RT12,RT13	1	1	1	1	
16	E12 B75 385	VARISTOR	NR11	1	1	1	1	
17	E12 A49 382	FUSE	F11	1	1	1	1	T3.15AL250V
18	E12 F28 784	V.A. CLAMP		1	1	1	1	
19	E12 F28 300	INDOOR FAN MOTOR	MF	1	1	1	1	RC0J56-□□ Includes FAN MOTOR RUBBER MOUNT (2 PCS/SET)
20	E12 F28 333	MOTOR BAND		1	1	1	1	
21	E12 F28 302	LINE FLOW FAN		1	1	1	1	

**MSZ-GF60VE MSZ-GF71VE**  
**1-4. INDOOR UNIT HEAT EXCHANGER**

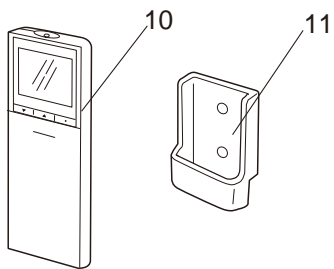


No.	Part No.	Part name	Symbol in Wiring Diagram	Q'ty/unit				Remarks
				MSZ-GF				
				60VE- <b>E1</b>	60VE- <b>ER1</b>	71VE- <b>E1</b>	71VE- <b>ER1</b>	
1	E12 F28 620	INDOOR HEAT EXCHANGER		1	1			
	E12 F29 620	INDOOR HEAT EXCHANGER				1	1	
2	E12 527 666	UNION (GAS)		1	1	1	1	ø15.88
3	E12 151 667	UNION (LIQUID)		1	1			ø6.35
	E12 815 666	UNION (LIQUID)				1	1	ø9.52

**MSZ-GF60VE2 MSZ-GF71VE2**  
**1-5. INDOOR UNIT STRUCTURAL PARTS**



**1-6. ACCESSORY AND REMOTE CONTROLLER**





### 1-5. INDOOR UNIT STRUCTURAL PARTS

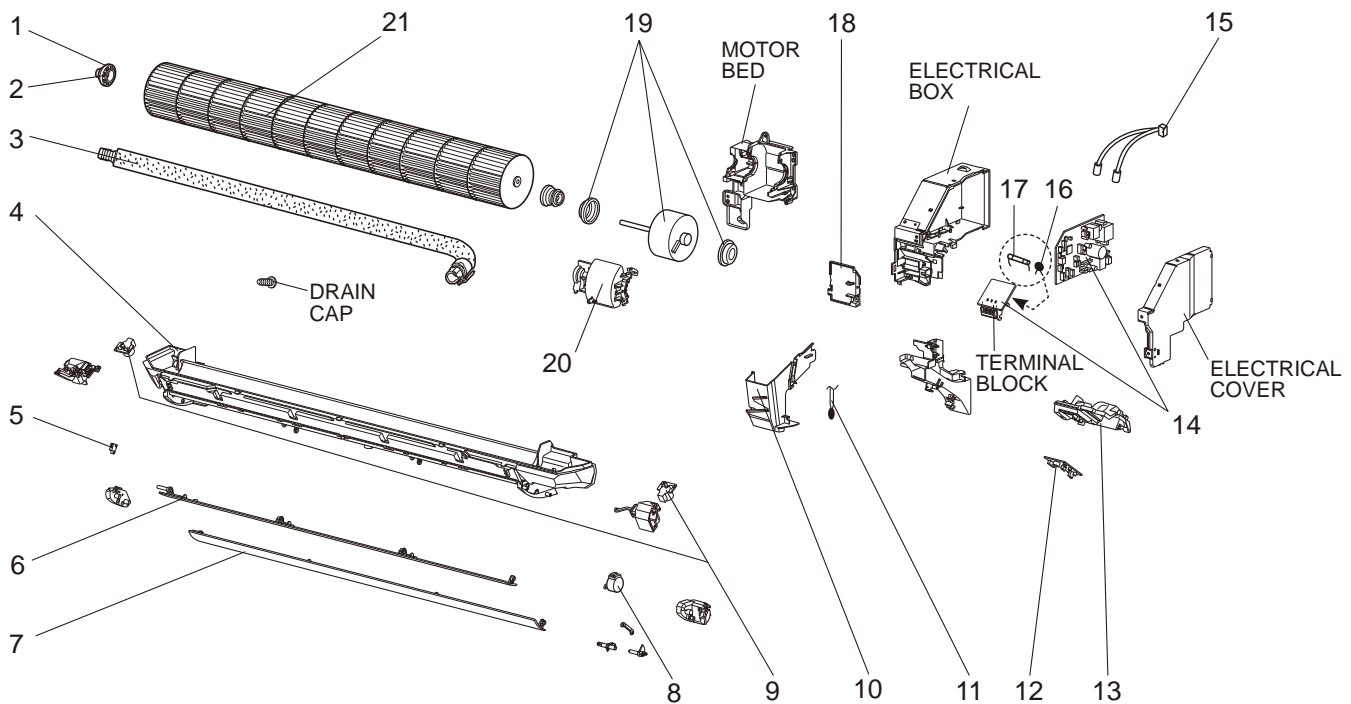
No.	Part No.	Part name	Symbol in Wiring Diagram	Q'ty/unit				Remarks
				MSZ-GF				
				60VE2- <u>E1</u>	60VE2- <u>ER1</u>	71VE2- <u>E1</u>	71VE2- <u>ER1</u>	
1	E22 J94 234	BOX ASSEMBLY		1	1	1	1	
2	E22 X07 000	PANEL ASSEMBLY		1		1		Includes No. 3, 4, and 5
	E22 X09 000	PANEL ASSEMBLY			1		1	Includes No. 3, 4, and 5
3	E22 408 142	CATCH		4	4	4	4	4 PCS/SET
4	E22 F28 067	SCREW CAP		3	3	3	3	3 PCS/SET
5	E22 R19 010	FRONT PANEL		1	1	1	1	
6	E22 X07 100	AIR PURIFYING FILTER		2	2	2	2	1PC/SET
7	E22 F28 975	CORNER BOX (RIGHT)		1	1	1	1	
8	E22 F28 976	CORNER BOX (LEFT)		1	1	1	1	
9	E22 F28 970	INSTALLATION PLATE		1	1	1	1	

### 1-6. ACCESSORY AND REMOTE CONTROLLER

No.	Part No.	Part name	Symbol in Wiring Diagram	Q'ty/unit				Remarks
				MSZ-GF				
				60VE2- <u>E1</u>	60VE2- <u>ER1</u>	71VE2- <u>E1</u>	71VE2- <u>ER1</u>	
10	E22 R86 426	REMOTE CONTROLLER		1	1	1	1	SG15E
11	E22 F28 083	REMOTE CONTROLLER HOLDER		1	1	1	1	

# MSZ-GF60VE2 MSZ-GF71VE2

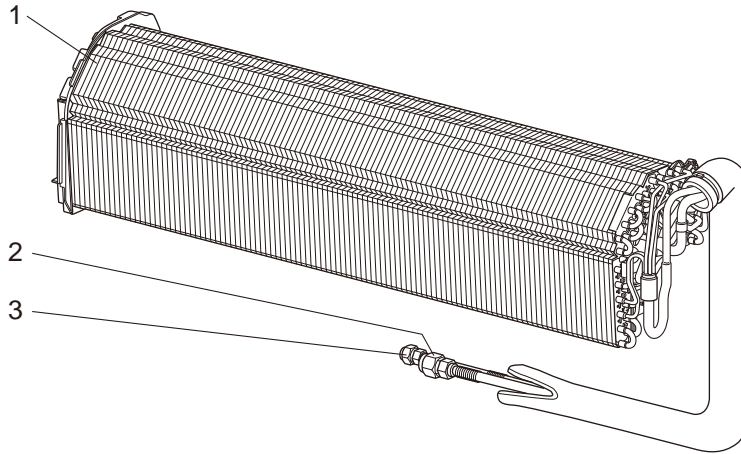
## 1-7. INDOOR UNIT ELECTRICAL PARTS AND FUNCTIONAL PARTS



No.	Part No.	Part name	Symbol in Wiring Diagram	Q'ty/unit				Remarks
				MSZ-GF				
				60VE2-E1	60VE2-ER1	71VE2-E1	71VE2-ER1	
1	E22 751 509	BEARING MOUNT		1	1	1	1	
2	E22 001 504	SLEEVE BEARING		1	1	1	1	
3	E22 T20 702	DRAIN HOSE		1	1	1	1	
4	E22 F31 235	NOZZLE ASSEMBLY		1	1	1	1	
5	E22 F28 316	INTERLOCK SWITCH (FAN)		1	1	1	1	
6	E22 F28 040	VANE (UPPER)		1	1	1	1	
7	E22 F28 041	VANE (LOWER)		1	1	1	1	
8	E22 C33 303	VANE MOTOR (HORIZONTAL)	MV1	1	1	1	1	UP & DOWN
9	E22 C32 303	VANE MOTOR (VERTICAL)	MV2	2	2	2	2	RIGHT & LEFT
10	E22 F28 541	WATER CUT		1	1	1	1	
11	E22 C32 308	ROOM TEMPERATURE THERMISTOR	RT11	1	1	1	1	
12	E22 F28 468	POWER MONITOR RECEIVER SW P.C. BOARD		1	1	1	1	
13	E22 F28 095	POWER MONITOR RECEIVER HOLDER		1	1	1	1	
14	E22 X07 452	ELECTRONIC CONTROL P.C. BOARD		1	1			Includes TERMINAL BLOCK with TERMINAL P.C. BOARD
	E22 X08 452	ELECTRONIC CONTROL P.C. BOARD				1	1	
15	E22 F28 307	INDOOR COIL THERMISTOR	RT12,RT13	1	1	1	1	
16	E22 B75 385	VARIATOR	NR11	1	1	1	1	
17	E22 A49 382	FUSE	F11	1	1	1	1	T3.15AL250V
18	E22 F28 784	V.A. CLAMP		1	1	1	1	
19	E22 F28 300	INDOOR FAN MOTOR	MF	1	1	1	1	RC0J56-□□ Includes FAN MOTOR RUBBER MOUNT (2 PCS/SET)
20	E22 F28 333	MOTOR BAND		1	1	1	1	
21	E22 F28 302	LINE FLOW FAN		1	1	1	1	



**MSZ-GF60VE2 MSZ-GF71VE2**  
**1-8. INDOOR UNIT HEAT EXCHANGER**



No.	Part No.	Part name	Symbol in Wiring Diagram	Q'ty/unit				Remarks
				MSZ-GF				
				60VE2- <u>E1</u>	60VE2- <u>ER1</u>	71VE2- <u>E1</u>	71VE2- <u>ER1</u>	
1	E22 F28 620	INDOOR HEAT EXCHANGER		1	1			
	E22 F29 620	INDOOR HEAT EXCHANGER				1	1	
2	E22 527 666	UNION (GAS)		1	1	1	1	ø15.88
3	E22 151 667	UNION (LIQUID)		1	1			ø6.35
	E22 815 666	UNION (LIQUID)				1	1	ø9.52

## 2-1. AIR CLEANING FILTER

### ELECTROSTATIC ANTI-ALLERGY ENZYME FILTER (MSZ-GF60/71VE)

Every 3 months:

- Remove dirt by a vacuum cleaner.

**When dirt cannot be removed by vacuum cleaning:**

- Soak the filter and its frame in lukewarm water before rinsing it.
- After washing, dry it well in shade.

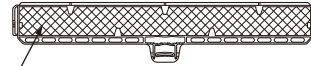
Every year:

- Replace it with a new air cleaning filter for best performance.

**NOTE 1:** Clean the filters regularly for best performance and to reduce power consumption.

**NOTE 2:** Dirty filters cause condensation in the air conditioner which will contribute to the growth of fungi such as mold. It is therefore recommended to clean air filters every 2 weeks.

Model	Part No.
MSZ-GF60VE MSZ-GF71VE	MAC-2310FT-E



Air cleaning filter  
(Electrostatic anti-allergy enzyme filter)

### SILVER-IONIZED AIR PURIFIER FILTER (MSZ-GF60/71VE2)

Every 3 months:

- Remove dirt by a vacuum cleaner.

**When dirt cannot be removed by vacuum cleaning:**

- Soak the filter and its frame in lukewarm water before rinsing it.
- After washing, dry it well in shade.

Every year:

- Replace it with a new air cleaning filter for best performance.

**NOTE 1:** Clean the filters regularly for best performance and to reduce power consumption.

**NOTE 2:** Dirty filters cause condensation in the air conditioner which will contribute to the growth of fungi such as mold. It is therefore recommended to clean air filters every 2 weeks.

Model	Part No.
MSZ-GF60VE2 MSZ-GF71VE2	MAC-2360FT-E



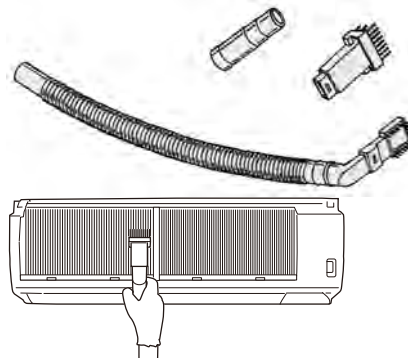
Air cleaning filter  
(Silver-ionized air purifier filter)

## 2-2. QUICK CLEAN KIT

- You can sweep the surface of heat exchanger and fan if you install the special-made brush to your vacuum cleaner.

Model	Part No.
MSZ-GF60VE MSZ-GF60VE2 MSZ-GF71VE MSZ-GF71VE2	MAC-093SS-E

**NOTE :** Refer to the instructions described in the QUICK CLEAN KIT for details.



# MITSUBISHI ELECTRIC CORPORATION

HEAD OFFICE: TOKYO BUILDING, 2-7-3, MARUNOUCHI, CHIYODA-KU, TOKYO 100-8310, JAPAN

© Copyright 2013 MITSUBISHI ELECTRIC CORPORATION

Issued: Mar. 2020. No. OBB634 REVISED EDITION-C

Issued: Dec. 2015. No. OBB634 REVISED EDITION-B

Issued: Dec. 2013. No. OBB634 REVISED EDITION-A

Published: Mar. 2013. No. OBB634

Made in Japan

Specifications are subject to change without notice.