

## INDOOR UNIT

# PARTS CATALOG

**No. OBB623**  
**REVISED EDITION-D**

### Models

**MSZ-FH25VE** - **E1**, **ER1**

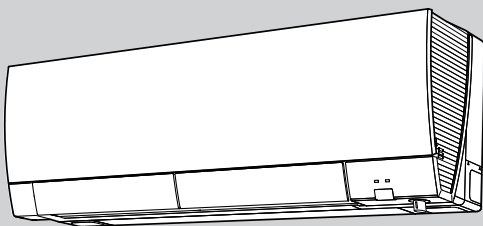
**MSZ-FH35VE** - **E1**, **ER1**

**MSZ-FH50VE** - **E1**, **ER1**

**MSZ-FH25VE2** - **E1**, **ER1**

**MSZ-FH35VE2** - **E1**, **ER1**

**MSZ-FH50VE2** - **E1**, **ER1**



### CONTENTS

1. SERVICE PARTS LIST .....	2
-----------------------------	---

**SERVICE MANUAL (OBH623)**

**Revision A:**

• MSZ-FH50VE- [E1] has been added.

**Revision B:**

• MSZ-FH25VE- [ER1], MSZ-FH35VE- [ER1] and MSZ-FH50VE- [ER1] have been added.

**Revision C:**

• MSZ-FH25VE2- [E1], [ER1], MSZ-FH35VE2- [E1], [ER1] and MSZ-FH50VE2- [E1], [ER1] have been added.

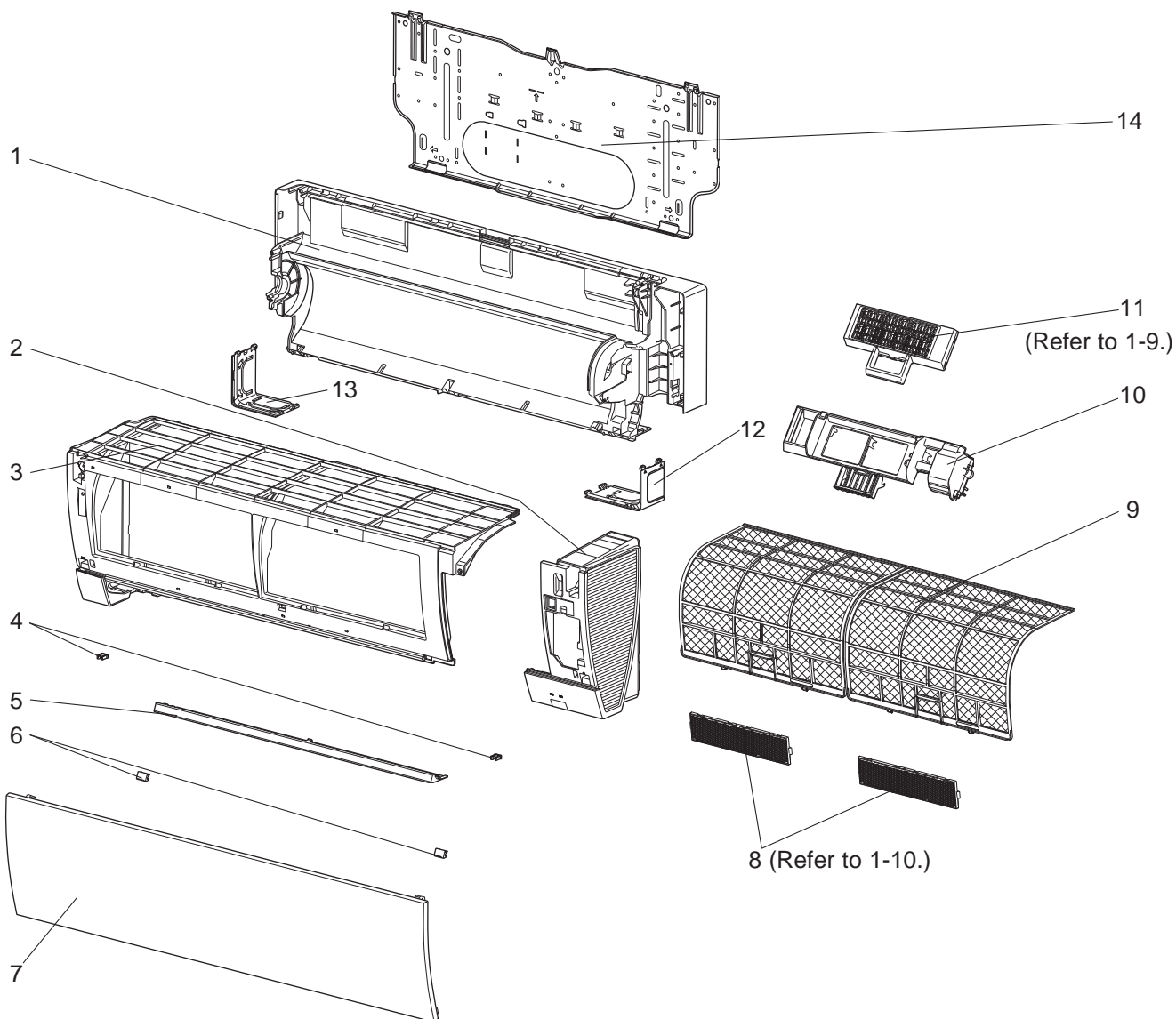
**Revision D:**

• Some descriptions have been modified.

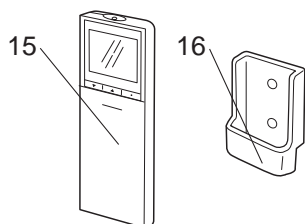
# 1 SERVICE PARTS LIST

## MSZ-FH25VE MSZ-FH35VE MSZ-FH50VE

### 1-1. INDOOR UNIT STRUCTURAL PARTS



### 1-2. ACCESSORY AND REMOTE CONTROLLER



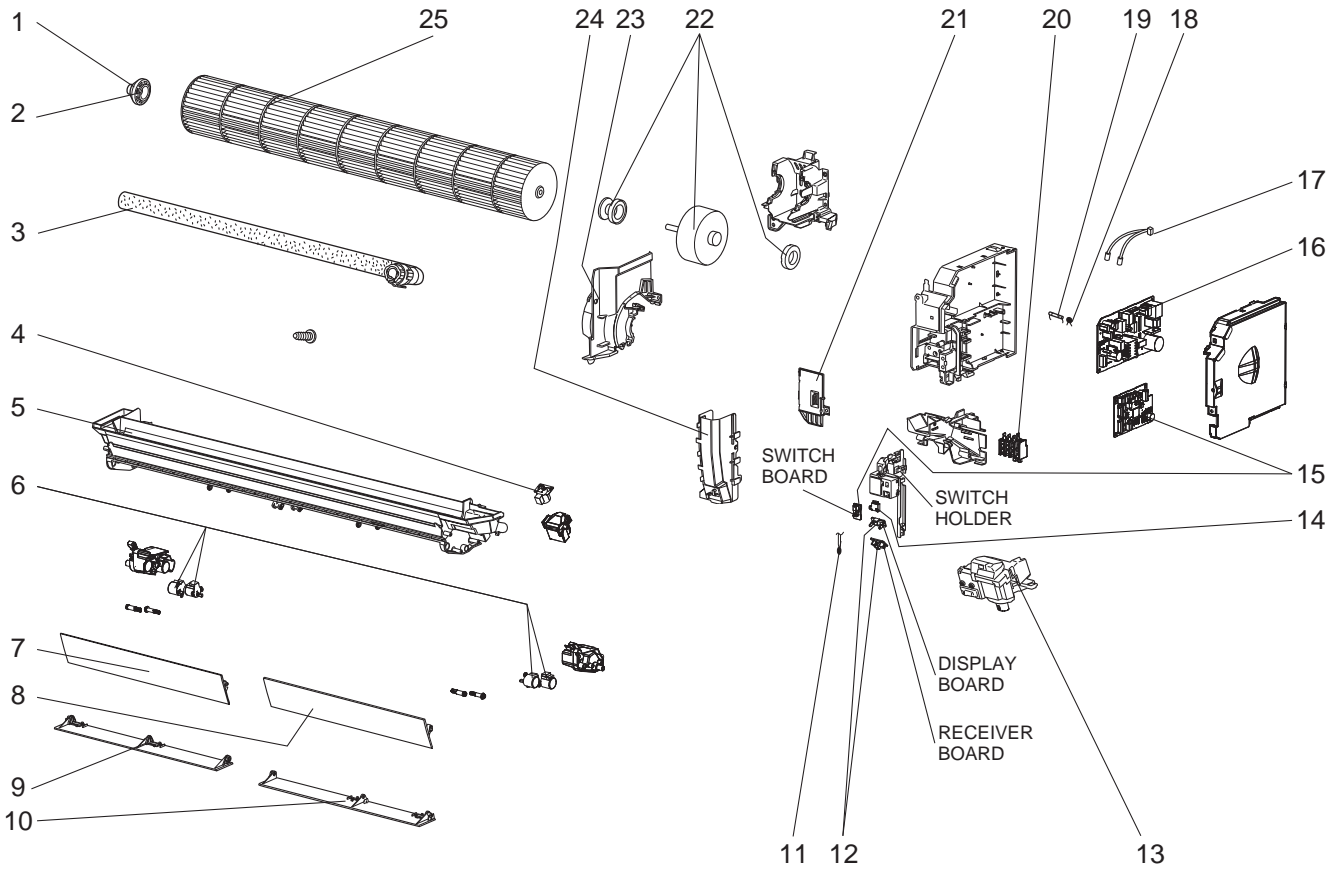
## 1-1. INDOOR UNIT STRUCTURAL PARTS

No.	Part No.	Part name	Symbol in Wiring Diagram	Q'ty/unit						Remarks
				MSZ-FH						
				25VE- E1	25VE- ER1	35VE- E1	35VE- ER1	50VE- E1	50VE- ER1	
1	E12 J46 234	BOX ASSEMBLY		1	1	1	1	1	1	
2	E12 J44 085	PANEL RIGHT ASSEMBLY		1	1	1	1	1	1	
3	E12 J44 086	PANEL LEFT ASSEMBLY		1		1		1		
	E12 T92 086	PANEL LEFT ASSEMBLY			1		1		1	
4	E12 F95 142	CATCH		2	2	2	2	2	2	2 PCS/SET
5	E12 J44 717	PANEL UNDER		1	1	1	1	1	1	
6	E12 J44 067	SCREW CAP		2	2	2	2	2	2	2 PCS/SET
7	E12 J44 010	FRONT PANEL		1	1	1	1	1	1	
8	—	AIR CLEANING FILTER (ELECTROSTATIC ANTI- ALLERGY ENZYME FILTER)		1	1	1	1	1	1	1 PC/SET MAC-2330FT-E
	—	AIR CLEANING FILTER (DEODORIZING FILTER)		1	1	1	1	1	1	1 PC/SET MAC-3000FT-E
9	E12 J44 100	AIR FILTER		2	2	2	2	2	2	1 PC/SET
10	E12 J44 775	AIR PURIFYING DEVICE SUPPORT		1	1	1	1	1	1	
11	E12 J44 774	AIR PURIFYING DEVICE		1	1	1	1	1	1	
12	E12 J44 975	CORNER BOX RIGHT		1	1	1	1	1	1	
13	E12 J44 976	CORNER BOX LEFT		1	1	1	1	1	1	
14	E12 J44 970	INSTALLATION PLATE		1	1	1	1	1	1	

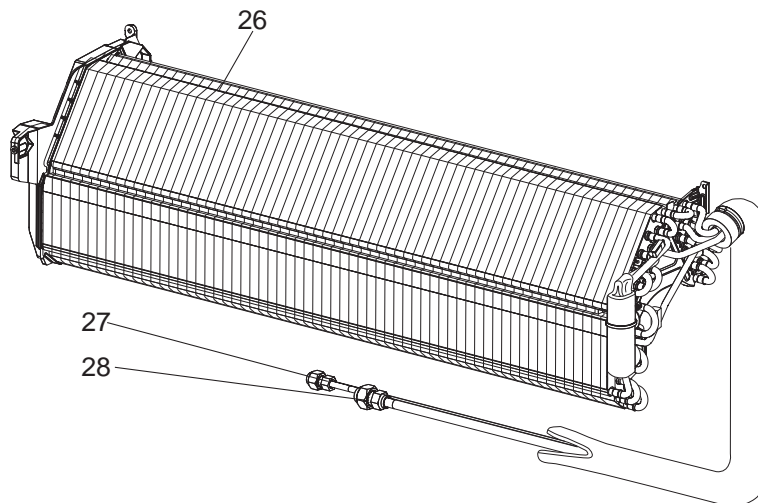
## 1-2. ACCESSORY AND REMOTE CONTROLLER

No.	Part No.	Part name	Symbol in Wiring Diagram	Q'ty/unit						Remarks
				MSZ-FH						
				25VE- E1	25VE- ER1	35VE- E1	35VE- ER1	50VE- E1	50VE- ER1	
15	E12 J44 426	REMOTE CONTROLLER		1	1	1	1	1	1	SG13A
16	E12 F28 083	REMOTE CONTROLLER HOLDER		1	1	1	1	1	1	

**MSZ-FH25VE MSZ-FH35VE MSZ-FH50VE**  
**1-3. INDOOR UNIT ELECTRICAL PARTS AND FUNCTIONAL PARTS**



**1-4. INDOOR UNIT HEAT EXCHANGER**



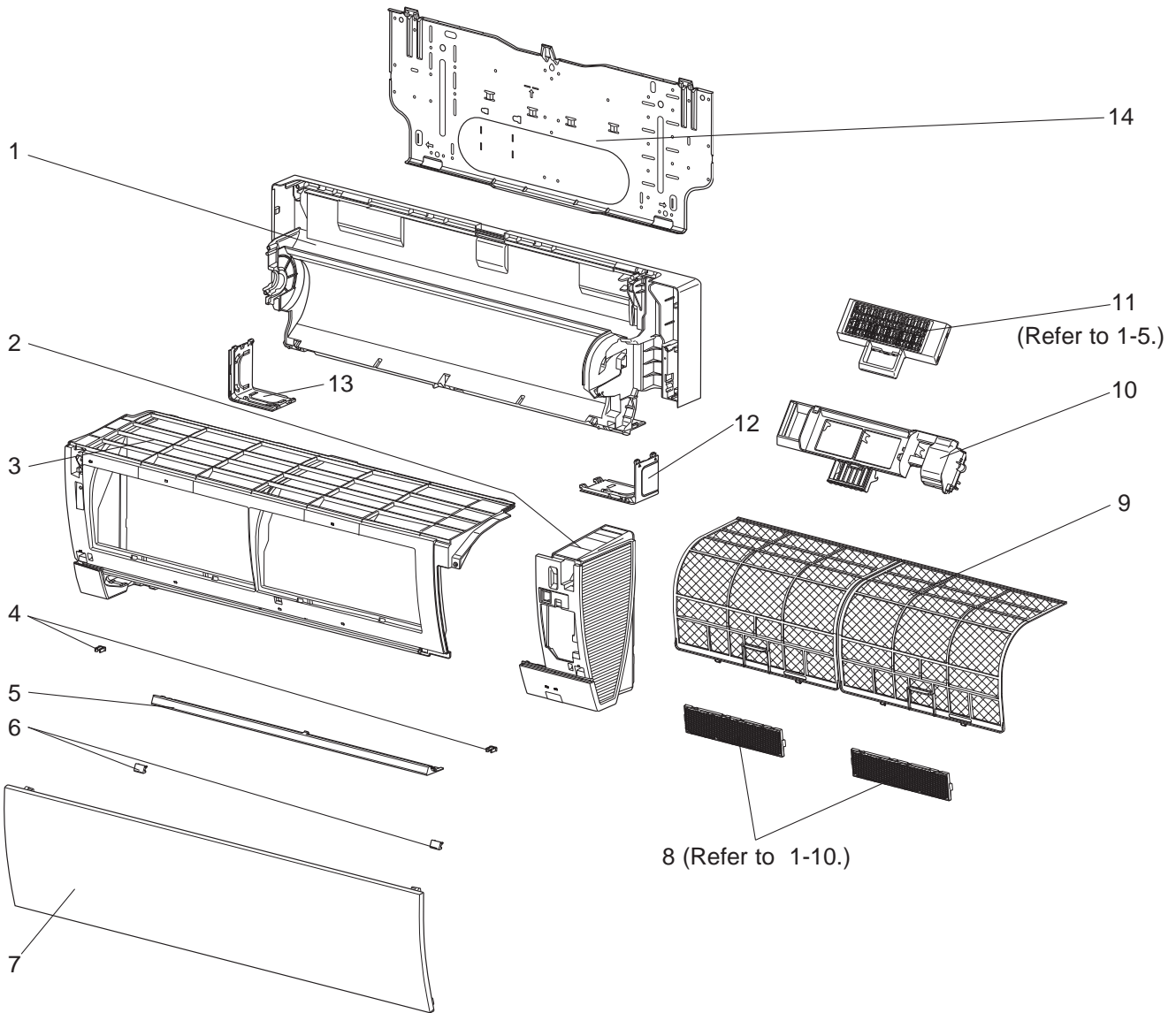
### 1-3. INDOOR UNIT ELECTRICAL PARTS AND FUNCTIONAL PARTS

No.	Part No.	Part name	Symbol in Wiring Diagram	Q'ty/unit						Remarks
				MSZ-FH						
				25VE- E1	25VE- ER1	35VE- E1	35VE- ER1	50VE- E1	50VE- ER1	
1	E12 751 509	BEARING MOUNT		1	1	1	1	1	1	
2	E12 001 504	SLEEVE BEARING		1	1	1	1	1	1	
3	E12 897 702	DRAIN HOSE		1	1	1	1	1	1	
4	E12 J44 303	VANE MOTOR (VERTICAL)	MV2	1	1	1	1	1	1	RIGHT & LEFT
5	E12 J44 235	NOZZLE ASSEMBLY		1	1	1	1	1	1	
6	E17 103 303	VANE MOTOR (HORIZONTAL)	MV1	4	4	4	4	4	4	UP & DOWN, 1 PC/SET
7	E12 J45 040	VANE UPPER (L)		1	1	1	1	1	1	
8	E12 J44 040	VANE UPPER (R)		1	1	1	1	1	1	
9	E12 J45 041	VANE LOWER (L)		1	1	1	1	1	1	
10	E12 J44 041	VANE LOWER (R)		1	1	1	1	1	1	
11	E12 J44 308	ROOM TEMPERATURE THERMISTOR	RT11	1	1	1	1	1	1	
12	E12 J44 468	DISPLAY AND RECEIVER P.C. BOARD		1	1	1	1	1	1	
13	E12 J44 391	DISPLAY AND i-see SENSOR ASSEMBLY		1	1	1	1	1	1	Includes i-see SENSOR and i-see SENSOR MOTOR (MT).
14	E12 J44 316	INTERLOCK SWITCH (AIR PURIFYING DEVICE)		1	1	1	1	1	1	
15	E12 M89 452	ELECTRONIC CONTROL P.C. BOARD		1	1					Includes SWITCH P.C. BOARD
	E12 M90 452				1	1				
	E12 M91 452						1	1		
16	E12 J44 440	POWER P.C. BOARD		1	1	1	1	1	1	
17	E12 J44 307	INDOOR COIL THERMISTOR	RT12,RT13	1	1	1	1			
	E12 L87 307						1	1		
18	E12 B75 385	VARISTOR	NR11	1	1	1	1	1	1	
19	E12 A49 382	FUSE	F11	1	1	1	1	1	1	T3.15AL250V
20	E12 F95 375	TERMINAL BLOCK	TB	1	1	1	1	1	1	
21	E12 F95 784	V.A. CLAMP		1	1	1	1	1	1	
22	E12 J44 300	INDOOR FAN MOTOR	MF	1	1	1	1	1	1	RC0J30-□□ Includes FAN MOTOR RUBBER MOUNT (2 PCS/SET)
23	E12 J46 333	MOTOR BAND		1	1	1	1	1	1	
24	E12 J44 541	WATER CUT		1	1	1	1	1	1	
25	E12 J44 302	LINE FLOW FAN		1	1	1	1	1	1	

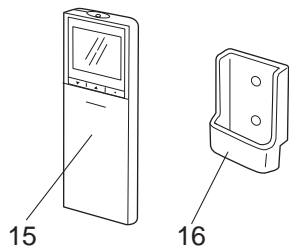
### 1-4. INDOOR UNIT HEAT EXCHANGER

No.	Part No.	Part name	Symbol in Wiring Diagram	Q'ty/unit						Remarks
				MSZ-FH						
				25VE- E1	25VE- ER1	35VE- E1	35VE- ER1	50VE- E1	50VE- ER1	
26	E12 J44 620	INDOOR HEAT EXCHANGER		1	1	1	1			
	E12 J46 620						1	1		
27	E12 151 667	UNION (LIQUID)		1	1	1	1	1	1	ø6.35
28	E12 815 666	UNION (GAS)		1	1	1	1			ø9.52
	E12 155 666						1	1	ø12.7	

**MSZ-FH25VE2 MSZ-FH35VE2 MSZ-FH50VE2**  
**1-5. INDOOR UNIT STRUCTURAL PARTS**



**1-6. ACCESSORY AND REMOTE CONTROLLER**



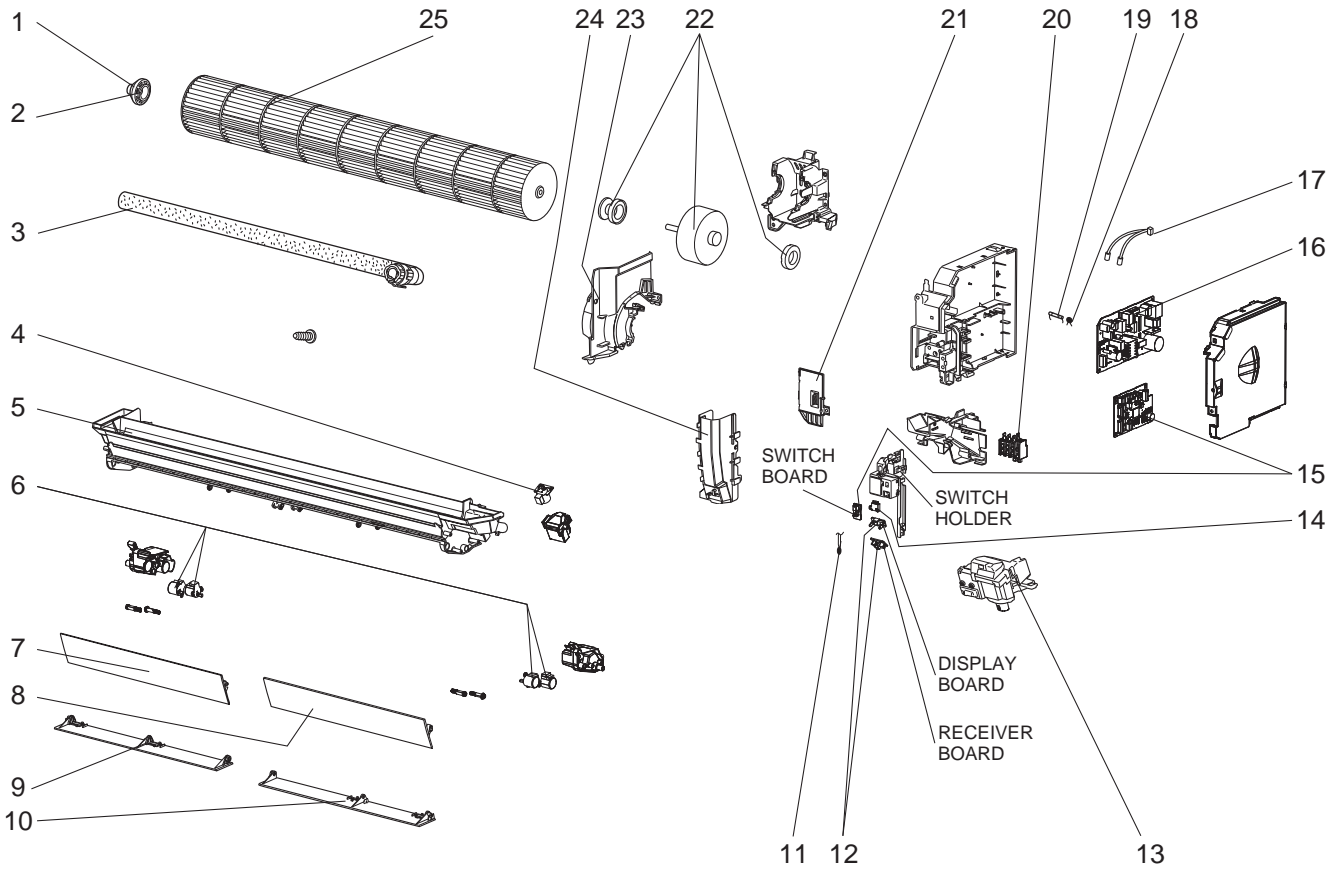
### 1-5. INDOOR UNIT STRUCTURAL PARTS

No.	Part No.	Part name	Symbol in Wiring Diagram	Q'ty/unit						Remarks
				MSZ-FH						
				25VE2- E1	25VE2- ER1	35VE2- E1	35VE2- ER1	50VE2- E1	50VE2- ER1	
1	E22 J46 234	BOX ASSEMBLY		1	1	1	1	1	1	
2	E22 T89 085	PANEL RIGHT ASSEMBLY		1	1	1	1	1	1	
3	E22 J44 086	PANEL LEFT ASSEMBLY		1		1		1		
	E22 T92 086	PANEL LEFT ASSEMBLY			1		1		1	
4	E22 F95 142	CATCH		2	2	2	2	2	2	2 PCS/SET
5	E22 J44 717	PANEL UNDER		1	1	1	1	1	1	
6	E22 J44 067	SCREW CAP		2	2	2	2	2	2	2 PCS/SET
7	E22 R08 010	FRONT PANEL		1	1	1	1	1	1	
8	—	AIR CLEANING FILTER (SILVER-IONIZED AIR PURIFIER FILTER)		1	1	1	1	1	1	1 PC/SET MAC-2380FT-E
	—	AIR CLEANING FILTER (DEODORIZING FILTER)		1	1	1	1	1	1	1 PC/SET MAC-3000FT-E
9	E22 J44 100	AIR FILTER		2	2	2	2	2	2	1 PC/SET
10	E22 J44 775	AIR PURIFYING DEVICE SUPPORT		1	1	1	1	1	1	
11	E22 J44 774	AIR PURIFYING DEVICE		1	1	1	1	1	1	
12	E22 J44 975	CORNER BOX RIGHT		1	1	1	1	1	1	
13	E22 J44 976	CORNER BOX LEFT		1	1	1	1	1	1	
14	E22 J44 970	INSTALLATION PLATE		1	1	1	1	1	1	

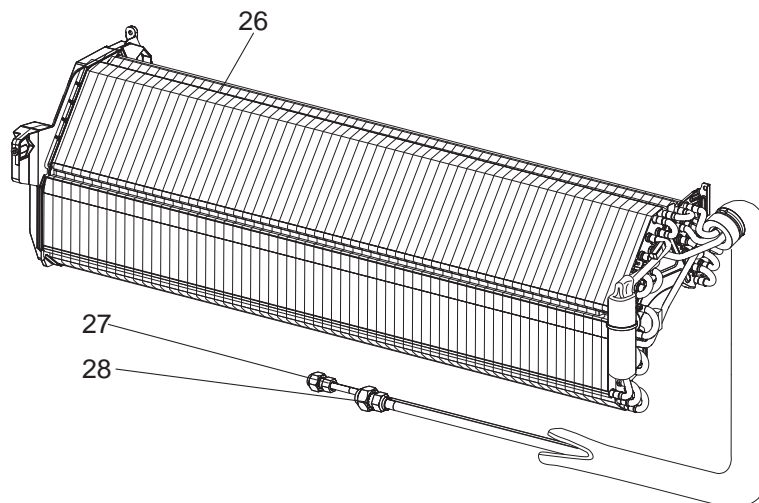
### 1-6. ACCESSORY AND REMOTE CONTROLLER

No.	Part No.	Part name	Symbol in Wiring Diagram	Q'ty/unit						Remarks
				MSZ-FH						
				25VE2- E1	25VE2- ER1	35VE2- E1	35VE2- ER1	50VE2- E1	50VE2- ER1	
15	E22 R11 426	REMOTE CONTROLLER		1	1	1	1	1	1	SG15C
16	E22 F28 083	REMOTE CONTROLLER HOLDER		1	1	1	1	1	1	

**MSZ-FH25VE2 MSZ-FH35VE2 MSZ-FH50VE2**  
**1-7. INDOOR UNIT ELECTRICAL PARTS AND FUNCTIONAL PARTS**



**1-8. INDOOR UNIT HEAT EXCHANGER**





## 1-7. INDOOR UNIT ELECTRICAL PARTS AND FUNCTIONAL PARTS

No.	Part No.	Part name	Symbol in Wiring Diagram	Q'ty/unit						Remarks
				MSZ-FH						
				25VE2- E1	25VE2- ER1	35VE2- E1	35VE2- ER1	50VE2- E1	50VE2- ER1	
1	E22 751 509	BEARING MOUNT		1	1	1	1	1	1	
2	E22 001 504	SLEEVE BEARING		1	1	1	1	1	1	
3	E22 P72 702	DRAIN HOSE		1	1	1	1	1	1	
4	E22 J44 303	VANE MOTOR (VERTICAL)	MV2	1	1	1	1	1	1	RIGHT & LEFT
5	E22 J44 235	NOZZLE ASSEMBLY		1	1	1	1	1	1	
6	E27 103 303	VANE MOTOR (HORIZONTAL)	MV1	4	4	4	4	4	4	UP & DOWN, 1 PC/SET
7	E22 J45 040	VANE UPPER (L)		1	1	1	1	1	1	
8	E22 J44 040	VANE UPPER (R)		1	1	1	1	1	1	
9	E22 J45 041	VANE LOWER (L)		1	1	1	1	1	1	
10	E22 J44 041	VANE LOWER (R)		1	1	1	1	1	1	
11	E22 J44 308	ROOM TEMPERATURE THERMISTOR	RT11	1	1	1	1	1	1	
12	E22 J44 468	DISPLAY AND RECEIVER P.C. BOARD		1	1	1	1	1	1	
13	E22 J44 391	DISPLAY AND i-see SENSOR ASSEMBLY		1	1	1	1	1	1	Includes i-see SENSOR and i-see SENSOR MOTOR (MT).
14	E22 J44 316	INTERLOCK SWITCH (AIR PURIFYING DEVICE)		1	1	1	1	1	1	
15	E22 M89 452	ELECTRONIC CONTROL P.C. BOARD		1	1					Includes SWITCH P.C. BOARD
	E22 M90 452				1	1				
	E22 M91 452						1	1		
16	E22 J44 440	POWER P.C. BOARD		1	1	1	1	1	1	
17	E22 J44 307	INDOOR COIL THERMISTOR	RT12,RT13	1	1	1	1			
	E22 L87 307							1	1	
18	E22 B75 385	VARISTOR	NR11	1	1	1	1	1	1	
19	E22 A49 382	FUSE	F11	1	1	1	1	1	1	T3.15AL250V
20	E22 T21 375	TERMINAL BLOCK	TB	1	1	1	1	1	1	
21	E22 F95 784	V.A. CLAMP		1	1	1	1	1	1	
22	E22 J44 300	INDOOR FAN MOTOR	MF	1	1	1	1	1	1	RC0J30-□□ Includes FAN MOTOR RUBBER MOUNT (2 PCS/SET)
23	E22 J46 333	MOTOR BAND		1	1	1	1	1	1	
24	E22 J44 541	WATER CUT		1	1	1	1	1	1	
25	E22 J44 302	LINE FLOW FAN		1	1	1	1	1	1	

## 1-8. INDOOR UNIT HEAT EXCHANGER

No.	Part No.	Part name	Symbol in Wiring Diagram	Q'ty/unit						Remarks
				MSZ-FH						
				25VE2- E1	25VE2- ER1	35VE2- E1	35VE2- ER1	50VE2- E1	50VE2- ER1	
26	E22 J44 620	INDOOR HEAT EXCHANGER		1	1	1	1			
	E22 J46 620						1	1		
27	E22 151 667	UNION (LIQUID)		1	1	1	1	1	1	ø6.35
28	E22 815 666	UNION (GAS)		1	1	1	1			ø9.52
	E22 155 666						1	1	ø12.7	

## 1-9. AIR PURIFYING DEVICE

Every 3 months:

- Remove dirt by a vacuum cleaner.

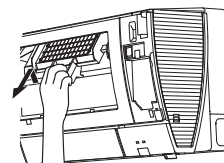
**When dirt cannot be removed by vacuum cleaning:**

- Soak the filter together with its frame in lukewarm water and rinse it.
- After washing, dry it well in shade.

**NOTE 1:** The air purifying device does not function for safety for a couple minutes after the operation starts or the front panel is opened/closed.

**NOTE 2:** Do not disassemble the air purifying device.

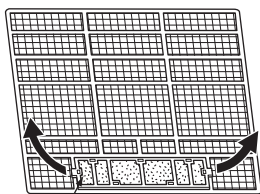
**NOTE 3:** Do not touch any parts other than the frame of the air purifying device.



## 1-10. AIR CLEANING FILTER

### Air cleaning filter replacement

Pull to remove from the air filter



Air cleaning filter

- Electrostatic anti-allergy enzyme filter (Blue) (MSZ-FH25/35/50VE)
- Silver-ionized air purifier filter (BLUE) (MSZ-FH25/35/50VE2)
- Deodorizing filter (Black) (MSZ-FH25/35/50VE, MSZ-FH25/35/50VE2)

### ELECTROSTATIC ANTI-ALLERGY ENZYME FILTER (BLUE) (MSZ-FH25/35/50VE)

Every 3 months:

- Remove dirt by a vacuum cleaner.

**When dirt cannot be removed by vacuum cleaning:**

- Soak the filter and its frame in lukewarm water before rinsing it.
- After washing, dry it well in shade. Install all tabs of the air filter.

Every year:

- Replace it with a new air cleaning filter for best performance.

**NOTE 1:** Clean the filters regularly for best performance and to reduce power consumption.

**NOTE 2:** Dirty filters cause condensation in the air conditioner which will contribute to the growth of fungi such as mold. It is therefore recommended to clean air filters every 2 weeks.

Model	Part No.
MSZ-FH25VE MSZ-FH35VE MSZ-FH50VE	MAC-2330FT-E

### SILVER-IONIZED AIR PURIFIER FILTER (BLUE) (MSZ-FH25/35/50VE2)

Every 3 months:

- Remove dirt by a vacuum cleaner.

**When dirt cannot be removed by vacuum cleaning:**

- Soak the filter and its frame in lukewarm water before rinsing it.
- After washing, dry it well in shade. Install all tabs of the air filter.

Every year:

- Replace it with a new air cleaning filter for best performance.

**NOTE 1:** Clean the filters regularly for best performance and to reduce power consumption.

**NOTE 2:** Dirty filters cause condensation in the air conditioner which will contribute to the growth of fungi such as mold. It is therefore recommended to clean air filters every 2 weeks.

Model	Part No.
MSZ-FH25VE2 MSZ-FH35VE2 MSZ-FH50VE2	MAC-2380FT-E

## DEODORIZING FILTER (BLACK) (MSZ-FH25/35/50VE, MSZ-FH25/35/50VE2)

### Every 3 months:

- Remove dirt by a vacuum cleaner, or soak the framed filter in lukewarm water (30 to 40 °C) for about 15 minutes. Rinse well.
- After washing, dry it well in shade.
- Deodorizing feature recovers by cleaning the filter.

### When dirt or smell cannot be removed by cleaning:

- Replace it with a new air cleaning filter.

Model	Part No.
MSZ-FH25VE MSZ-FH35VE MSZ-FH50VE MSZ-FH25VE2 MSZ-FH35VE2 MSZ-FH50VE2	MAC-3000FT-E

# **mitsubishi electric corporation**

HEAD OFFICE: TOKYO BUILDING, 2-7-3, MARUNOUCHI, CHIYODA-KU, TOKYO 100-8310, JAPAN

© Copyright 2012 MITSUBISHI ELECTRIC CORPORATION

Issued: Oct. 2019. No. OBB623 REVISED EDITION-D

Issued: Nov. 2015. No. OBB623 REVISED EDITION-C

Issued: Dec. 2013. No. OBB623 REVISED EDITION-B

Issued: Mar. 2013. No. OBB623 REVISED EDITION-A

Published Jul. 2012. No. OBB623

Made in Japan

Specifications are subject to change without notice.