

Revision A:

- Part numbers of the electronic control P.C. boards have been changed.

Please void OBB589.

INDOOR UNIT PARTS CATALOG

No. OBB589
REVISED EDITION-A

Models

MSZ-EF22VEW - E1 MSZ-EF25VEW - E1 MSZ-EF35VEW - E1

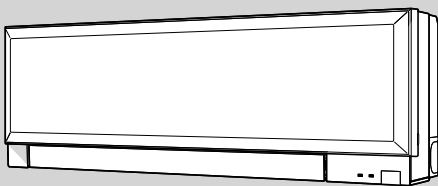
MSZ-EF42VEW - E1 MSZ-EF50VEW - E1

MSZ-EF22VEB - E1 MSZ-EF25VEB - E1 MSZ-EF35VEB - E1

MSZ-EF42VEB - E1 MSZ-EF50VEB - E1

MSZ-EF22VES - E1 MSZ-EF25VES - E1 MSZ-EF35VES - E1

MSZ-EF42VES - E1 MSZ-EF50VES - E1



CONTENTS

- | | |
|-------------------------|--------|
| 1. RoHS PARTS LIST..... | 2..... |
| 2. OPTIONAL PARTS..... | 7..... |

SERVICE MANUAL (OBH589)

NOTE:

RoHS compliant products have <G> mark on the spec name plate.



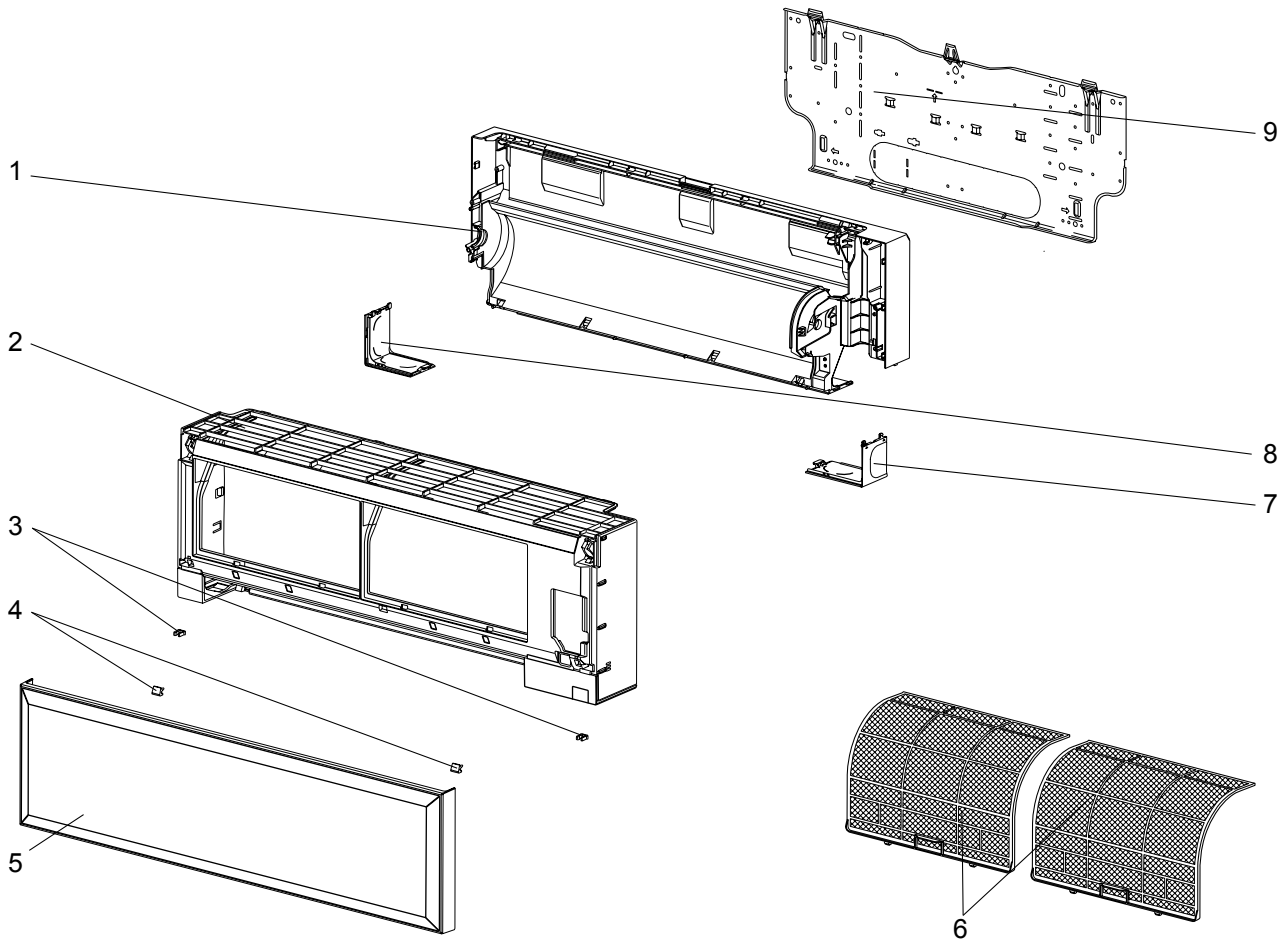
Revision A:

• Part numbers of the electronic control P.C. boards have been changed.

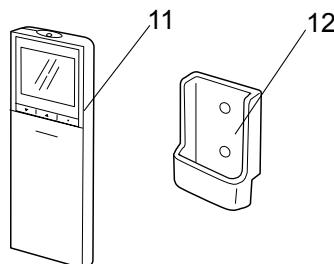
1 RoHS PARTS LIST

**MSZ-EF22VEV MSZ-EF25VEV MSZ-EF35VEV MSZ-EF42VEV MSZ-EF50VEV
MSZ-EF22VEB MSZ-EF25VEB MSZ-EF35VEB MSZ-EF42VEB MSZ-EF50VEB
MSZ-EF22VES MSZ-EF25VES MSZ-EF35VES MSZ-EF42VES MSZ-EF50VES**

1-1. INDOOR UNIT STRUCTURAL PARTS



1-2. ACCESSORY AND REMOTE CONTROLLER





1-1. INDOOR UNIT STRUCTURAL PARTS

Part numbers that is circled is not shown in the illustration.

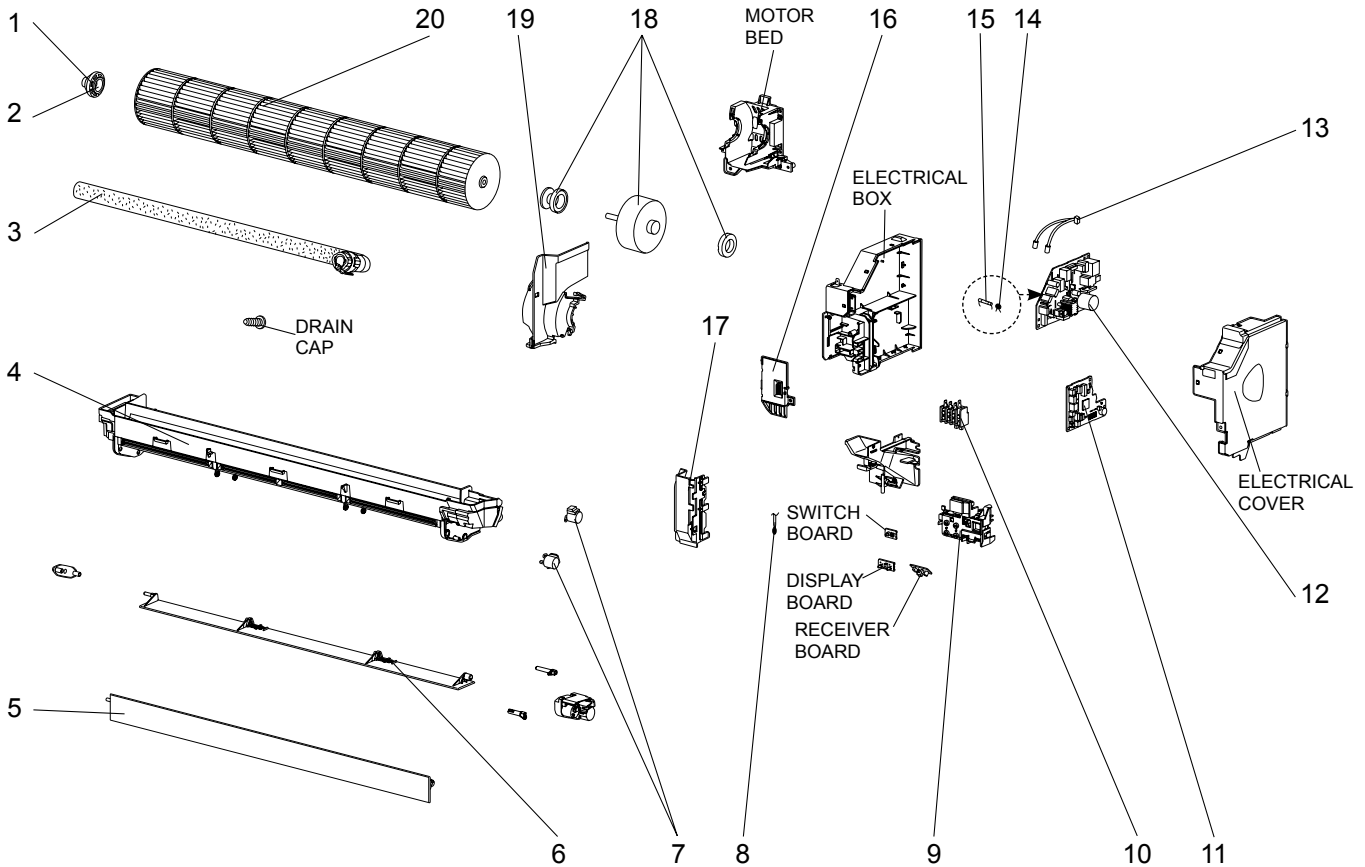
No.	RoHS	Part No.	Part name	Symbol in Wiring Diagram	Q'ty/unit															Remarks
					MSZ-EF															
					22			25			35			42			50			
VEW	VEB	VES	VEW	VEB	VES	VEW	VEB	VES	VEW	VEB	VES	VEW	VEB	VES						
-E1	-E1	-E1	-E1	-E1	-E1	-E1	-E1	-E1	-E1	-E1	-E1	-E1	-E1	-E1						
1	G	E12 F95 234	BOX ASSEMBLY		1		1		1		1		1		1					
	G	E12 G21 234			1		1		1		1		1		1					
	G	E12 G26 234				1		1		1		1		1		1				
2	G	E12 F95 000	PANEL ASSEMBLY		1		1		1		1		1		1				Including No. 3,4,5	
	G	E12 G21 000			1		1		1		1		1		1					Including No. 3,4,5
	G	E12 G26 000				1		1		1		1		1		1				
3	G	E12 F95 142	CATCH		2	2	2	2	2	2	2	2	2	2	2	2	2	2	2 PCS/SET	
4	G	E12 F95 067	SCREW CAP		2		2		2		2		2		2				2 PCS/SET	
	G	E12 G21 067			2		2		2		2		2		2				2 PCS/SET	
	G	E12 G26 067				2		2		2		2		2		2				2 PCS/SET
5	G	E12 F95 010	FRONT PANEL		1		1		1		1		1		1					
	G	E12 G21 010			1		1		1		1		1		1					
	G	E12 G26 010				1		1		1		1		1		1				
6	G	E12 F95 100	NANO PLATINUM FILTER		2	2	2	2	2	2	2	2	2	2	2	2	2	2	1 PC/SET	
7	G	E12 F95 975	CORNER BOX RIGHT		1		1		1		1		1		1					
	G	E12 G21 975			1		1		1		1		1		1					
	G	E12 G26 975				1		1		1		1		1		1				
8	G	E12 F95 976	CORNER BOX LEFT		1		1		1		1		1		1					
	G	E12 G21 976			1		1		1		1		1		1					
	G	E12 G26 976				1		1		1		1		1		1				
9	G	E12 F95 970	INSTALLATION PLATE		1	1	1	1	1	1	1	1	1	1	1	1	1	1		
⑩	G	—	SOFT DRY CLOTH		1		1		1		1		1		1				MAC-1001CL-E	

1-2. ACCESSORY AND REMOTE CONTROLLER

11	G	E12 F95 426	REMOTE CONTROLLER		1	1	1	1	1	1	1	1	1	1	1	1	1	1	1	SG11D
12	G	E12 F28 083	REMOTE CONTROLLER HOLDER		1	1	1	1	1	1	1	1	1	1	1	1	1	1	1	

**MSZ-EF22VEW MSZ-EF25VEW MSZ-EF35VEW MSZ-EF42VEW MSZ-EF50VEW
 MSZ-EF22VEB MSZ-EF25VEB MSZ-EF35VEB MSZ-EF42VEB MSZ-EF50VEB
 MSZ-EF22VES MSZ-EF25VES MSZ-EF35VES MSZ-EF42VES MSZ-EF50VES**

1-3. INDOOR UNIT ELECTRICAL PARTS AND FUNCTIONAL PARTS



1-3. INDOOR UNIT ELECTRICAL PARTS AND FUNCTIONAL PARTS

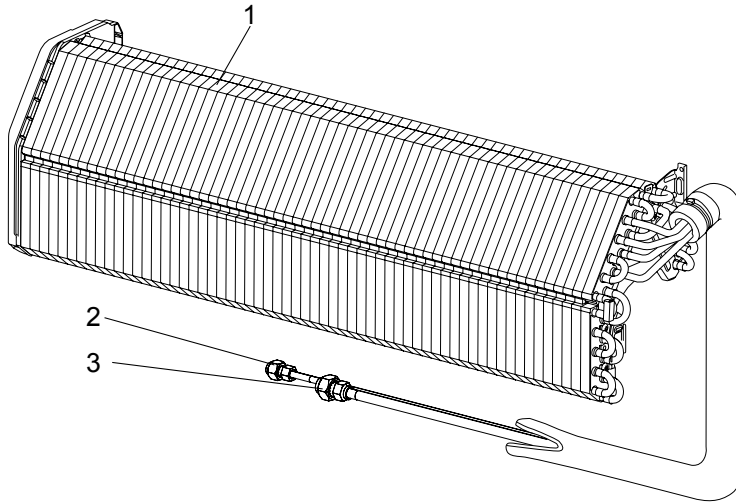
No.	RoHS	Part No.	Part name	Symbol in Wiring Diagram	Q'ty/unit															Remarks
					MSZ-EF															
					22			25			35			42			50			
VEW	VEB	VES	VEW	VEB	VES	VEW	VEB	VES	VEW	VEB	VES	VEW	VEB	VES						
-E1	-E1	-E1	-E1	-E1	-E1	-E1	-E1	-E1	-E1	-E1	-E1	-E1	-E1	-E1						
1	G	E12 751 509	BEARING MOUNT		1	1	1	1	1	1	1	1	1	1	1	1	1	1		
2	G	E12 001 504	SLEEVE BEARING		1	1	1	1	1	1	1	1	1	1	1	1	1	1		
3	G	E12 897 702	DRAIN HOSE		1	1	1	1	1	1	1	1	1	1	1	1	1	1		
4	G	E12 F95 235	NOZZLE ASSEMBLY		1		1		1		1		1		1		1			
	G	E12 G21 235			1		1		1		1		1		1		1			
	G	E12 G26 235				1		1		1		1		1		1		1		
5	G	E12 F95 040	VANE UPPER		1		1		1		1		1		1		1			
	G	E12 G21 040			1		1		1		1		1		1		1			
	G	E12 G26 040				1		1		1		1		1		1		1		
6	G	E12 F95 041	VANE LOWER		1		1		1		1		1		1		1			
	G	E12 G21 041			1		1		1		1		1		1		1			
	G	E12 G26 041				1		1		1		1		1		1		1		
7	G	E12 A89 303	VANE MOTOR	MV	2	2	2	2	2	2	2	2	2	2	2	2	2	2	UP & DOWN, 1 PC/SET	
8	G	E12 F95 308	ROOM TEMPERATURE THERMISTOR	RT11	1	1	1	1	1	1	1	1	1	1	1	1	1	1		
9	G	E12 F95 095	DISPLAY P.C. BOARD HOLDER		1	1	1	1	1	1	1	1	1	1	1	1	1	1		
10	G	E12 F95 375	TERMINAL BLOCK	TB	1	1	1	1	1	1	1	1	1	1	1	1	1	1		
11	G	E12 F95 452	ELECTRONIC CONTROL P.C. BOARD ※1		1	1	1													
	G	E12 G22 452					1	1	1											
	G	E12 G23 452							1	1	1									
	G	E12 G24 452									1	1	1							
	G	E12 G25 452												1	1	1				
12	G	E12 F98 440	POWER P.C. BOARD		1	1	1	1	1	1	1	1	1	1	1	1	1	1		
13	G	E12 F95 307	INDOOR COIL THERMISTOR	RT12,RT13	1	1	1	1	1	1	1	1	1	1	1	1	1	1		
14	G	E12 B75 385	VARISTOR	NR11	1	1	1	1	1	1	1	1	1	1	1	1	1	1		
15	G	E12 A49 382	FUSE	F11	1	1	1	1	1	1	1	1	1	1	1	1	1	1	T3.15A/250V	
16	G	E12 F95 784	V.A. CLAMP		1	1	1	1	1	1	1	1	1	1	1	1	1	1		
17	G	E12 F95 541	WATER CUT		1	1	1	1	1	1	1	1	1	1	1	1	1	1		
18	G	E12 F95 300	INDOOR FAN MOTOR ※2	MF	1	1	1	1	1	1	1	1	1	1	1	1	1	1	RC0J40-□□	
19	G	E12 F95 333	MOTOR BAND		1	1	1	1	1	1	1	1	1	1	1	1	1	1		
20	G	E12 F95 302	LINE FLOW FAN		1	1	1	1	1	1	1	1	1	1	1	1	1	1		

※1 Including RECEIVER BOARD, DISPLAY BOARD and SWITCH BOARD.

※2 Including FAN MOTOR RUBBER MOUNT (2 PCS/SET)

MSZ-EF22VEW MSZ-EF25VEW MSZ-EF35VEW MSZ-EF42VEW MSZ-EF50VEW
 MSZ-EF22VEB MSZ-EF25VEB MSZ-EF35VEB MSZ-EF42VEB MSZ-EF50VEB
 MSZ-EF22VES MSZ-EF25VES MSZ-EF35VES MSZ-EF42VES MSZ-EF50VES

1-4. INDOOR UNIT HEAT EXCHANGER



No.	RoHS	Part No.	Part name	Symbol in Wiring Diagram	Q'ty/unit															Remarks
					MSZ-EF															
					22			25			35			42			50			
VEW	VEB	VES	VEW	VEB	VES	VEW	VEB	VES	VEW	VEB	VES	VEW	VEB	VES						
1	G	E12 F95 620	INDOOR HEAT EXCHANGER		1	1	1	1	1	1	1	1	1	1	1					
	G	E12 F99 620														1	1	1		
2	G	E12 151 667	UNION (LIQUID)		1	1	1	1	1	1	1	1	1	1	1	1	1	1	ø6.35	
3	G	E12 815 666	UNION (GAS)		1	1	1	1	1	1	1	1	1	1				ø9.52		
	G	E12 155 666														1	1		1	ø12.7

2

OPTIONAL PARTS

2-1. AIR CLEANING FILTER (ELECTROSTATIC ANTI-ALLERGY ENZYME FILTER, OPERATION)

Every 3 months:

- Remove dirt by a vacuum cleaner.

When dirt cannot be removed by vacuum cleaning:

- Soak the filter and its frame in lukewarm water before rinsing it.
- After washing, dry it well in shade. Install all tabs of the air filter.

Every year:

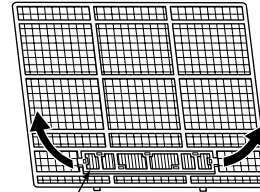
- Replace it with a new air cleaning filter for best performance.

NOTE 1: Clean the filters regularly for best performance and to reduce power consumption.

NOTE 2: Dirty filters cause condensation in the air conditioner which will contribute to the growth of fungi such as mold. It is therefore recommended to clean air filters every 2 weeks.

Model	Part No.
MSZ-EF22VEW	MAC-2320FT
MSZ-EF22VEB	
MSZ-EF22VES	
MSZ-EF25VEW	
MSZ-EF25VEB	
MSZ-EF25VES	
MSZ-EF35VEW	
MSZ-EF35VEB	
MSZ-EF35VES	
MSZ-EF42VEW	
MSZ-EF42VEB	
MSZ-EF42VES	
MSZ-EF50VEW	
MSZ-EF50VEB	
MSZ-EF50VES	

Pull to remove from the air filter



Air cleaning filter
(Electrostatic anti-allergy enzyme filter)

2-2. SOFT DRY CLOTH

- Clean the panel with the soft dry cloth when it is dirty.

Model	Part No.
MSZ-EF22VEW	MAC-1001CL-E
MSZ-EF22VES	
MSZ-EF25VEW	
MSZ-EF25VES	
MSZ-EF35VEW	
MSZ-EF35VES	
MSZ-EF42VEW	
MSZ-EF42VES	
MSZ-EF50VEW	
MSZ-EF50VES	

mitsubishi electric corporation

HEAD OFFICE: TOKYO BLDG., 2-7-3, MARUNOUCHI, CHIYODA-KU, TOKYO 100-8310, JAPAN

© Copyright 2010 MITSUBISHI ELECTRIC CORPORATION
Distributed in Apr. 2012. No.OBB589 REVISED EDITION-A
Distributed in Nov. 2010. No. OBB589
Made in Japan

New publication, effective Apr. 2012
Specifications are subject to change without notice.