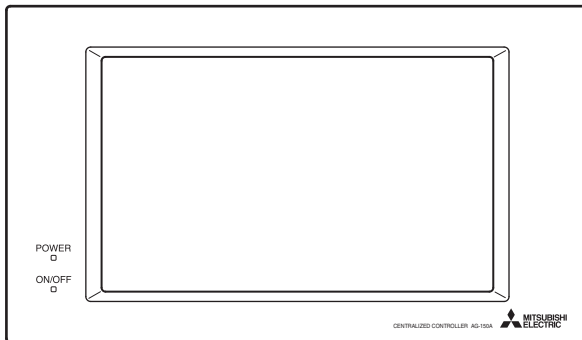


Mitsubishi Electric Air-conditioner Network System

Centralized Controller Model: AG-150A

Instruction Book





1. Safety precautions	1
2. Product features.....	2
3. Component names and display screen names	5
4. User operation	12
4-1 Operation condition monitoring	13
4-2 Prohibiting the operation of air conditioning units from the local remote controllers.....	14
4-3 Setting Schedules	18
4-4 Checking the List of Malfunctioning Units	27
4-5 Checking the List of Units with a Triggered Filter Sign.....	28
4-6 Checking the Malfunction Log.....	29
5. Initial Settings.....	30
5-1 Bringing up the settings screen.....	30
5-2 Setting the Current Date and Time	30
5-3 Register the license	31
5-4 Setting the Basic Information	32
5-5 Network Setting.....	34
5-6 Group Setting	36
5-7 Interlocked Setting	39
5-8 Block Setting	40
5-9 Floor Layout Setting.....	41
5-10 Checking the refrigerant systems	43
6. User Setting	44
6-1 Setting the Maintenance User.....	44
6-2 Setting the Building Manager.....	44
7. Maintenance screen.....	46
7-1 Copying the data to a USB drive.....	46
7-2 Adjusting the touch panel.....	47
8. Cleaning the touch panel	48
9. External input/output function	49
9-1 External input function	49
9-2 External output function	50
9-3 LAN connection function	50
10. Specifications	50

Before using the controller, please read this Instruction Book carefully to ensure proper operation.
Keep this manual for future reference.

1. Safety precautions

Before using the controller, read the Safety Precautions section carefully to ensure proper operation. These safety precautions must be observed by anyone who operates the centralized controller at all times. Keep this Instruction Book and Installation Manual for future reference. Make sure both this Instruction Book and the Installation Manual are given to the next user.

 WARNING	This symbol indicates that failure to follow the instructions exactly as stated poses the risk of serious injury or death.
 CAUTION	This symbol indicates that failure to follow the instructions exactly as stated poses the risk of injury or damage to the controller.

WARNING

Have the unit professionally installed.

Improper installation by an unqualified person may result in a risk of electric shock or fire.

Make sure the controller is securely mounted so that it will not fall.

Make sure that the controller is connected to a properly rated power supply to avoid fire or damage to the controller.

If any abnormality is noticed (e.g., burning smell), stop the operation, turn off the power supply, and contact your dealer or technical representative immediately.
Continuing the operation may result in damage to the controller, electric shock, or fire.

Ask your dealer or an authorized technician to move the controller.

Improper installation may result in electric shock or fire or damage to the controller.

Controllers must be disposed of properly.

Contact your dealer for proper disposal procedures.

Do not attempt to modify or repair the controller.

Modification or improper repair may result in electric shock or fire. Consult your dealer when repairs are necessary.

Stop the operation immediately and notify your dealer if an error code is displayed and the controller does not operate, or when any abnormality is noticed.

Continuing the operation may result in damage to the controller or fire.

CAUTION

Do not install the controller where there is a risk of leakage of flammable gas.

If the leaked gas accumulates around the controller, it may be ignited and result in an explosion.

Do not wet the controller.

Water may damage the controller and cause an electric shock.

Do not use the controller for specialized applications.

This product is designed exclusively for use with the MITSUBISHI ELECTRIC building air conditioning control system. The use of this product with other air-conditioning management systems or for other purposes may result in malfunctions.

Do not spray insect sprays or sprays with flammable propellants to the controller.

To avoid the risk of fire or explosion, do not place flammable sprays near the controller or spray them directly on the controller.

To reduce the risk of electric shock and malfunctions, do not operate the touch panel with wet hands.

Do not use the controller in an environment high in oil, steam, or sulfuric gas.

These substances may have adverse effects on the performance of the controller or damage its parts.

To reduce the risk of electric shock or malfunctions, do not use a pointy or sharp object to operate the touch panel.

Operate the controller within the temperature range specification.

The use of controller outside of its specification may result in serious damage to the controller. Be sure to check the temperature range specification in the Instruction Book.

Use a security device such as a VPN router when connecting the AG-150A to the Internet to prevent unauthorized access.

If no security devices are installed, the operation settings may be changed by an unauthorized person without the knowledge of the user.

2. Product features

The controller described in this manual is a centralized controller that can be operated over the Web. Air conditioning units connected to this controller can be operated or monitored directly from this controller or over the Web, using a browser software on the computer. Refer to the Web browser operation manual (separate volume) for how to use the Web functions.

Function		Description	
Number of control unit	Indoor unit or independent OA processing unit or LOSSNAY	Up to 50 units are connectable (including the interlocked units) *2	
	Number of units in one group (indoor or independent OA processing unit or LOSSNAY)	1-16 units (Indoor unit, independent OA processing unit and LOSSNAY can not register to the same group.)	
	Number of remote controllers in one group	1-2	
	Number of system controllers in one group	0-4 (including the number of remote controller in one group)	
	Number of interlocked units	<ul style="list-style-type: none"> Number of LOSSNAY units (interlocked unit) that can be interlocked with an indoor unit (interlocking unit): 1 Number of indoor units (interlocking unit) that can be interlocked with a LOSSNAY unit (interlocked unit): 16 	
User Operations Function	Operation *1	ON/OFF	The ON/OFF operation can be performed as a collective or per group or per block.
		Operation mode	The switch operation for the operation mode setting can be performed as a collective or per group or per block. (Available modes depend on the model.) [Selectable operation mode for the indoor unit] COOL/DRY/FAN/AUTO/HEAT [Selectable operation mode for the independent ventilation] HEAT RECOVERY/BY-PASS/AUTO [Selectable operation mode for Hot water supply equipment] HEATING/HEATING ECO/HOT WATER/ANTI-FREEZE/COOLING
		Fan speed	Up to four fan speeds are available, and the fan speed can be changed collectively, or for each group or block of indoor units. (The number of available fan speeds depends on the model (2 speeds, 3 speeds, 4 speeds, and Auto). "Auto" is available only on the models that support that function.)
		Temperature setting	Temperature setting can be performed collectively or per group or per block. [Setting temperature range for air conditioner] Cool (Dry) operation: 19 ~ 30°C / 67 ~ 87°F Heat operation: 17 ~ 28°C / 63 ~ 83°F Auto operation: 19 ~ 28°C / 67 ~ 83°F [Setting temperature range for Air To Water Booster unit] [Air To Water Booster unit]*3 [Air To Water HEX unit]*3 Heating: 30 ~ 50°C / 87~122°F Heating: 30 ~ 45°C / 87~113°F Heating ECO: 30 ~ 45°C / 87~113°F Heating ECO: 30 ~ 45°C / 87~113°F Hot Water: 30 ~ 70°C / 87~158°F Hot Water: 30 ~ 90°C / 87~194°F Anti-freeze: 10 ~ 45°C / 50~113°F Anti-freeze: 10 ~ 45°C / 50~113°F Cooling: Invalid Cooling: 10 ~ 30°C / 50~87°F
		Air direction and swing operation	Vertical air flow directions (5 directions), auto setting, and swing setting can be changed collectively, or for each group or block of indoor units. (Available air flow directions depend on the model. [5 air flow directions and AUTO] are available only on the models that support those settings.)
		Operating/stopping the interlocked LOSSNAY units	Interlocked LOSSNAY units (if any) can be operated (at High or Low) or stopped collectively or for each group or block of indoor units. (Ventilation mode cannot be selected for the interlocked LOSSNAY units.)
		Schedule	Group is the smallest unit to which a weekly schedule can be assigned. The same schedule can be applied to each group, groups in a block, or groups on a floor. <ul style="list-style-type: none"> Up to 24 events can be scheduled for each day. "Temperature Setting", "Fan Speed Setting", "Vane Setting", and "Setback Operation" can be timer-controlled. If a license is registered <ul style="list-style-type: none"> Two types of weekly schedule patterns (summer and winter) are available. Five operation patterns (A-E) can be set for each year, up to 50 days can be allocated to each pattern.

		Function	Description
User Operations Function	Operation *1	Prohibit local remote control	Operation of certain functions from the local remote controllers can be prohibited collectively or for each group or blocks of indoor units. (Applicable functions: ON/OFF, operation mode, temperature setting, filter sign)
		Filter sign reset	Filter sign can be reset for each group or block of indoor units.
		Error reset	Resets the display of error.
		Error history reset	Resets the error history (unit error, communication error).
		External input	Connects to an external input/output device that stops the units in an emergency, run or stop the units, permit or prohibit the operation of units collectively. Requires an external input/output adapter (sold separately).
	Monitor *1	ON/OFF (system)	The ON/OFF indicator lamp indicates if one or more groups or all the groups in the system are stopped.
		Operation status of each group in the system	Operation status (ON/OFF), operation mode, fan speed, temperature setting, air flow direction, operation status (ON/OFF) of interlocked units, timer enable/disable status of each group is displayed.
		Filter sign	Indicates that the filter on the units in a given group is due for cleaning.
		Local operation prohibition	Displays the functions that the controller forbids or the functions that are forbidden by other controllers.
		Error	The address of the unit in error, error code, and the address of the unit that detected the error will appear.
		External output	Outputs signals (run/stop, error) to an external device. Requires an external input/output adapter (sold separately).
Initial Settings	Operation *1	Date and time	This function is used to set the current date/time and daylight savings time.
		License	This function is used to register license.
		Unit Info.	This function is used to set unit name, ID number, brightness of the LCD, sound volume, date format, time format, temperature unit, and display language.
		Network	This function is used to set the IP address, subnet mask address, and gateway settings for the LAN and also to set the address, K-transmission converter address, local control prohibit settings, and external input settings for the M-NET.
		Groups	This function is used to register indoor units, LOSSNAY units, remote controllers, and lower-level system controllers to a group.
		Blocks	This function is used to register a group to a block.
		Interlock	This function is used to interlock the operation of indoor units and LOSSNAY units.
		Floor Layout	This function is used to make the basic settings for the floor layout and display position of the groups.
	Monitor *1	Error history monitor	Up to 128 errors can be stored in memory. (64 unit errors, 64 communication errors)
		Refrigerant system configuration confirmation	Allows the user to see which indoor units are connected to each outdoor unit.
User Setting	Operation *1	Maintenance User	Allows the maintenance user name and password to be set.
		Building Manager	Allows the building manager name, password, function enable/disable settings to be made.
Other	Data back-up	Connection/Interlock Information	Group setting information and interlock setting information are retained, even if power is turned off.
		Error history	Retained, even if power is turned off.
		Schedule data	Schedule information of each group is retained, even if power is turned off.
		Current time	Current time is retained by the build-in capacitor for a week, even if power is turned off.
		Saving the data on a USB drive	The initial setting data, history data, calculated values, and computed values can be stored to a USB drive.
	Device maintenance	Touch panel cleaning	Touch panel is locked and can be cleaned.

*1: The item and range that can be operated or monitored depend on the function of the indoor unit.

*2: The maximum number of the controllable units varies depending on the indoor unit.

*3: "Hot Water Supply" on the AG-150A screen indicates Air To Water Booster unit group and Air To Water HEX unit group.

* Upper-level and lower-level system controllers

The controller described in this manual can only be used as the upper-level controller, but not as a lower-level controller.

• Upper-level system controller (upper-level SC)

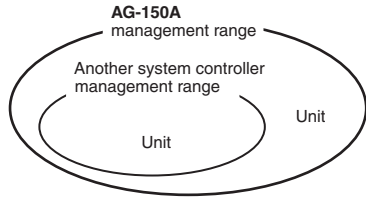
Upper-level SC refers to a controller that controls all other system controllers including the units they control.

If a given system has only one system controller, that controller becomes an upper-level controller.

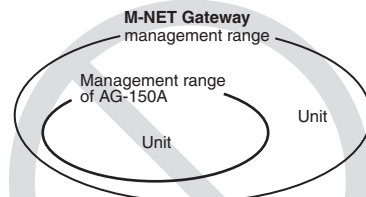
Group settings and interlock settings can only be made from an upper-level controller.

• Lower-level system controller (lower-level SC)

Lower-level controller refers to a system controller that is controlled (including the units it controls) by an upper-level system controller.



When AG-150A controls another system controller or when the system contains only AG-150A:
AG-150A is set as the main system controller.
*AG-150A performs the group setting in this configuration.

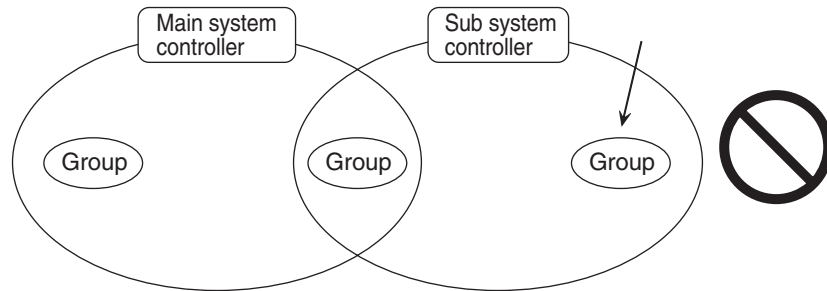


When AG-150A is controlled by another system controller:
(Example: MJ-300Gateway)
AG-150A is set as the sub system controller.
*The group setting is performed by main system controller.

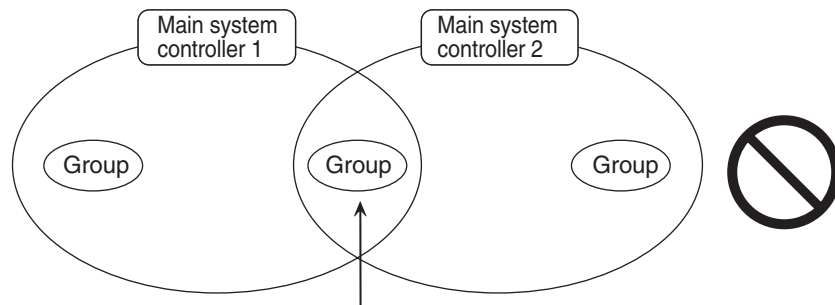
NOTE:

The following group setting cannot be performed.

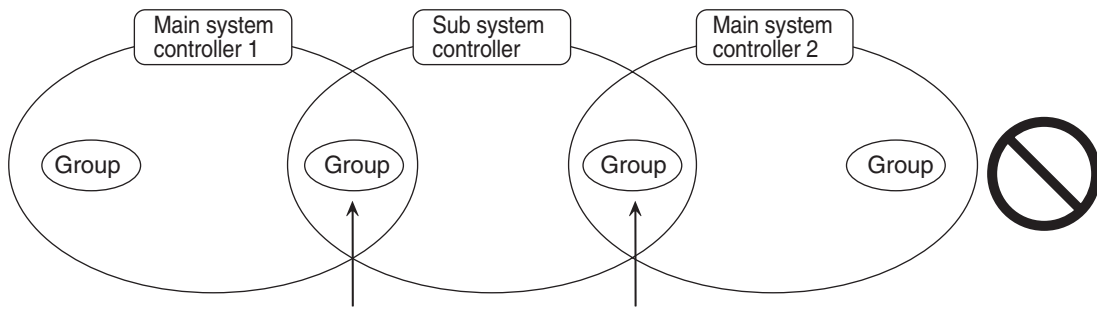
- Unit groups which are not under the management of the main controller and are managed by the sub system controller.



- A common group is managed by more than two main controllers.



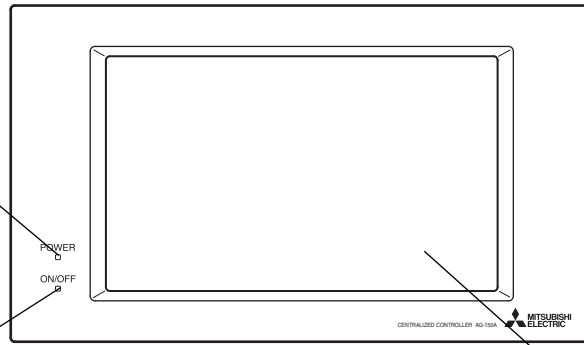
- A sub system controller which exceeds the management range of the main system controller of two or more.



3. Component names and display screen names

Power indicator
Unlit Power is turned off.
Lit Power is turned on.

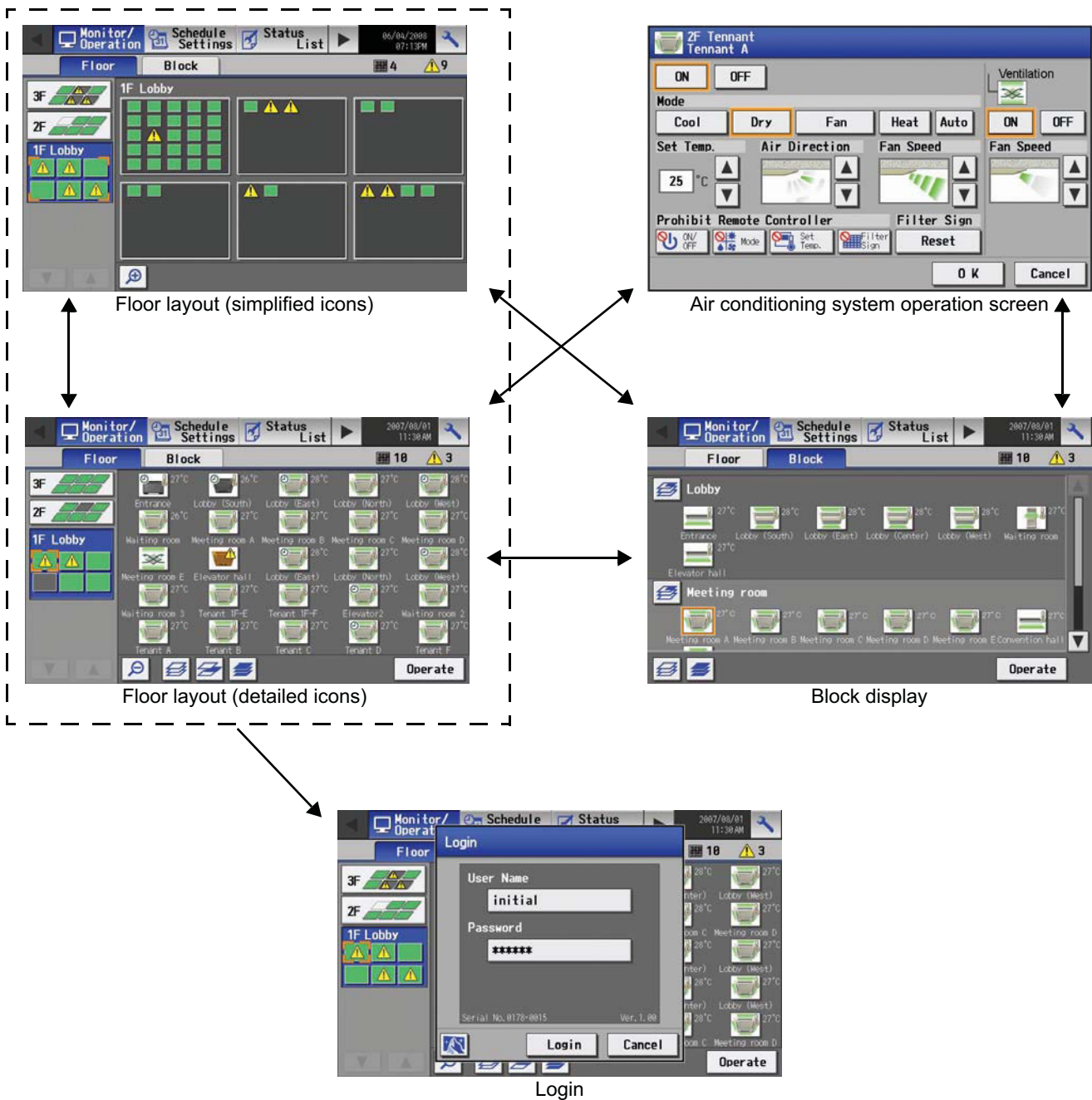
ON/OFF indicator lamp
(system)
Displays the operation
status of indoor units
Unlit All groups of units
are stopped.
Lit One or more groups
of units are ON.
Blink ... Indicates that an
error occurred.



Note:
Before using the AG-150A, remove
the protective sheet on the surface
cover.
CAUTION
If the protective sheet is left on the
screen, the sheet may stick to the
LCD and cause malfunctions.

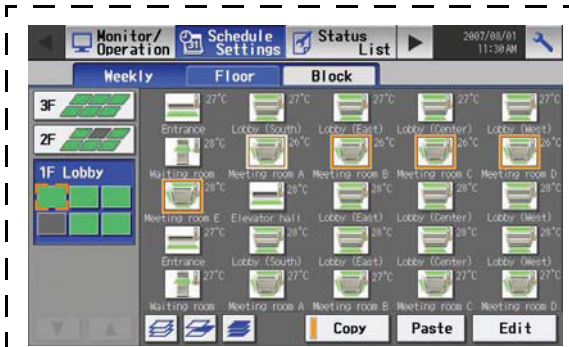
Display/Touch panel

<Monitor/Operation>

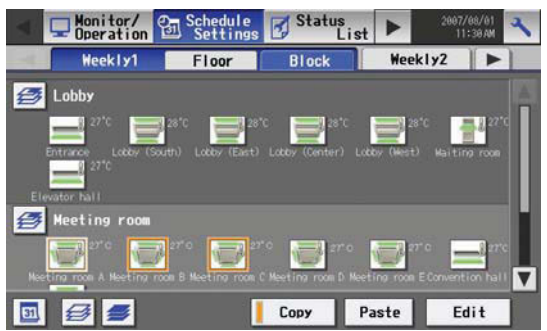


<Schedule Settings>

- Setting the schedule without a license registration



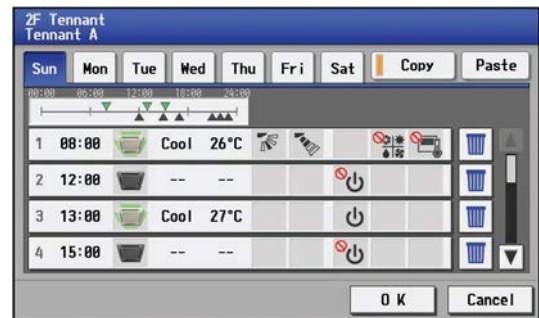
Schedule setting screen (floor layout) Weekly



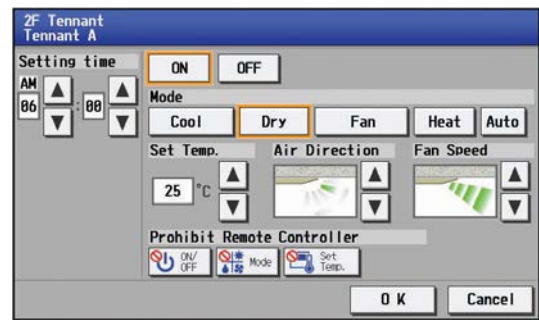
Schedule setting screen (block display) Weekly



Login



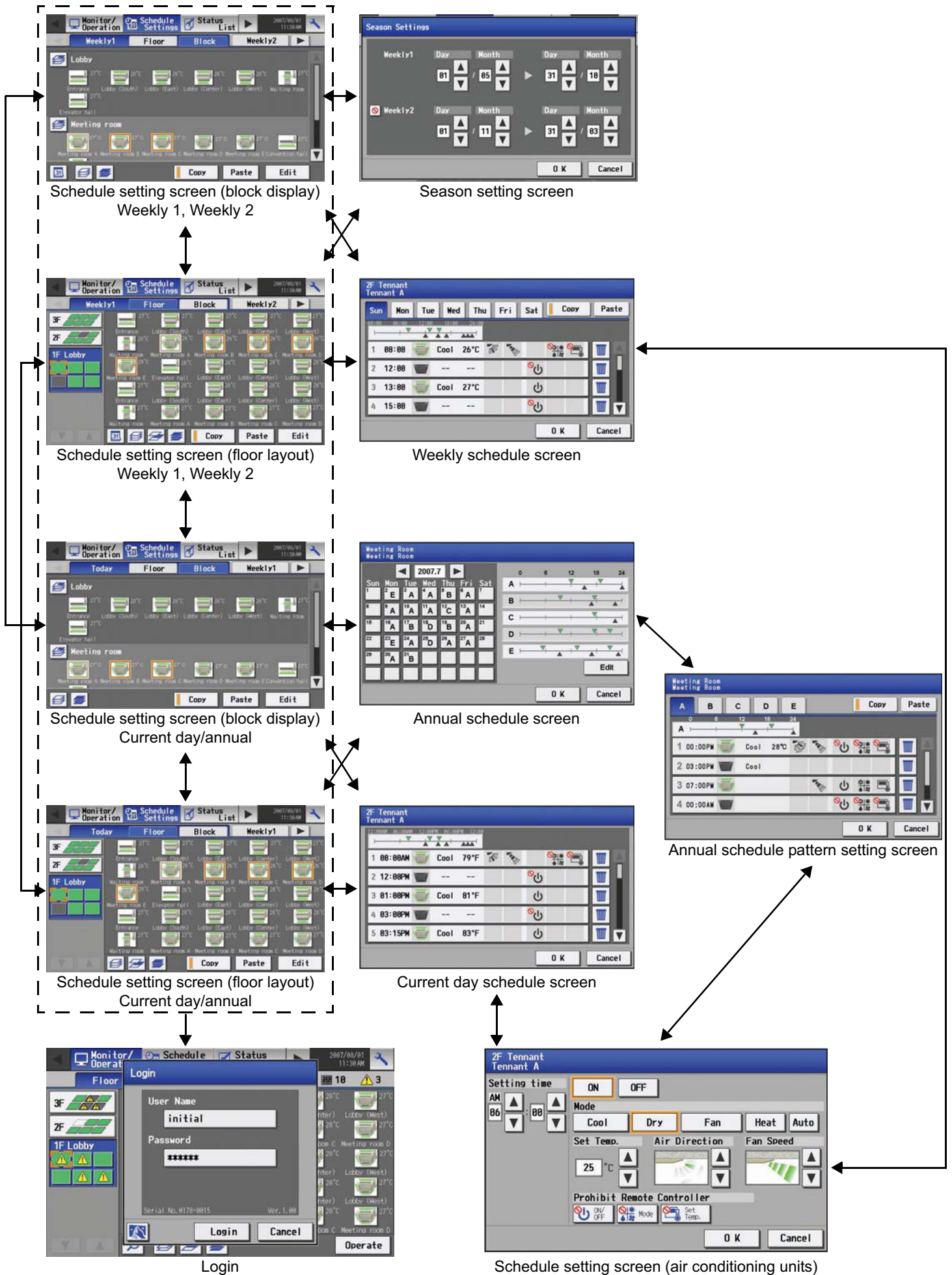
Weekly schedule screen



Schedule setting screen (air conditioning units)

<Schedule Settings>

- Setting the schedule with a license registration



<Status List>

	Group name	Address	Error code
1	1F Lobby Meeting room 1A	001	5010
2	1F Lobby Meeting room 1A	002	5010
3	1F Lobby Meeting room 1A	003	5010
4	1F Lobby Meeting room 1A	004	5010
5	1F Lobby Meeting room 1A	005	5010

All reset

Malfunction

User Name: initial
Password: *****

Serial No. 0178-0015 Ver. 1.00

Login Cancel

Login

	Group name	Address	Reset
1	1F Lobby Meeting room 1A	001	Reset
2	1F Lobby Meeting room 1A	002	Reset
3	1F Lobby Meeting room 1A	003	Reset
4	1F Lobby Meeting room 1A	004	Reset
5	1F Lobby Meeting room 1A	005	Reset

All reset

Filter sign

<Log>

	Occurred	Address (Detection)	Error code	Recovery
1	2007-10-10 02:43PM	001 (051)	5010	2007-10-11 10:11AM
2	2007-10-10 11:15AM	002 (051)	5010	2007-10-11 10:11AM
3	2007-10-07 11:00PM	003 (053)	5010	2007-10-08 10:07AM
4	2007-10-01 00:34PM	004 (053)	5010	2007-10-01 05:58PM
5	2007-09-24 08:08AM	005 (053)	5010	2007-09-25 08:32AM

Clear log

Unit error

User Name: initial
Password: *****

Serial No. 0178-0015 Ver. 1.00

Login Cancel

Login

	Occurred	Address (Detection)	Error code	Recovery
1	2007-10-10 02:43PM	001 (051)	6687	2007-10-11 10:11AM
2	2007-10-10 11:15AM	002 (051)	6687	2007-10-11 10:11AM
3	2007-10-07 11:00PM	003 (053)	6687	2007-10-08 10:07AM
4	2007-10-01 00:34PM	004 (053)	6687	2007-10-01 05:58PM
5	2007-09-24 08:08AM	005 (053)	6687	2007-09-25 08:32AM

Clear log

Communication error



Login

<Initial Settings>

License

Date and time

System View

Unit Info.

Floor Layout

Blocks

Network

Groups

Interlock

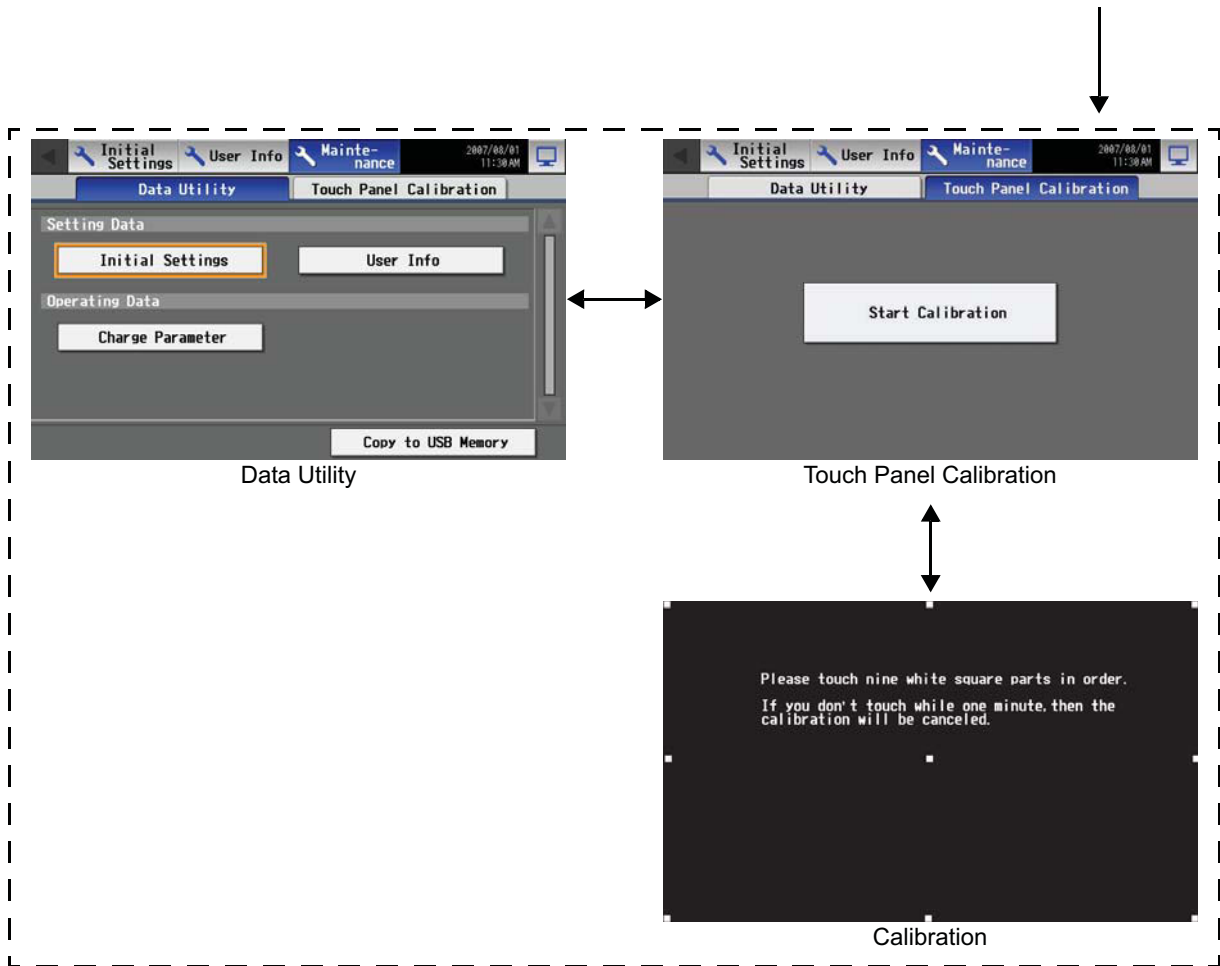
The above nine initial setting screens can be accessed from the sub menu.

<User Info>

Maintenance User

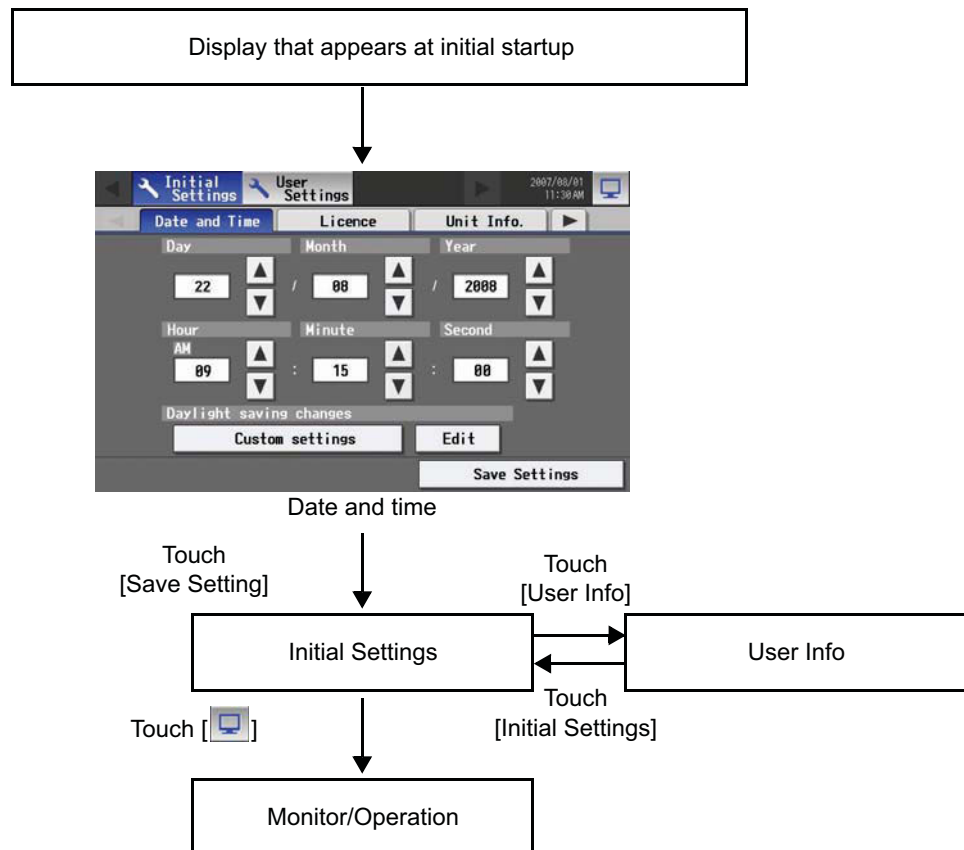
Building Manager

<Maintenance>



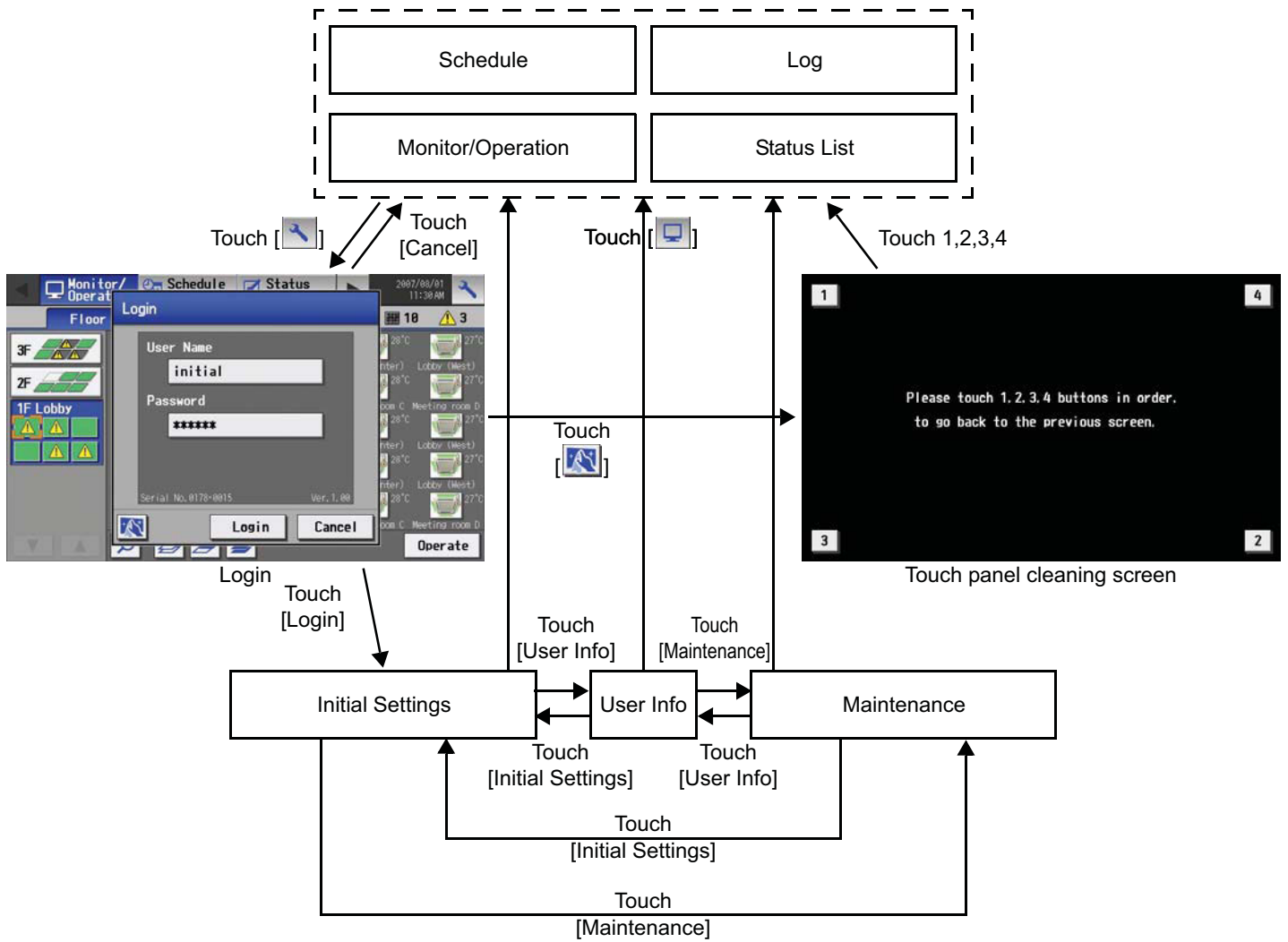
<Displays>

- Initial startup



- Screen that normally appears

Main operation screen



- * Normally, the screen remains black. The backlight turns on when the touch panel is touched and stays on while the user is operating the touch panel. The backlight goes off after 10 minutes of non-operation.
- * When an error occurs, the backlight turns on regardless of whether the user is operating the touch panel.

CAUTION

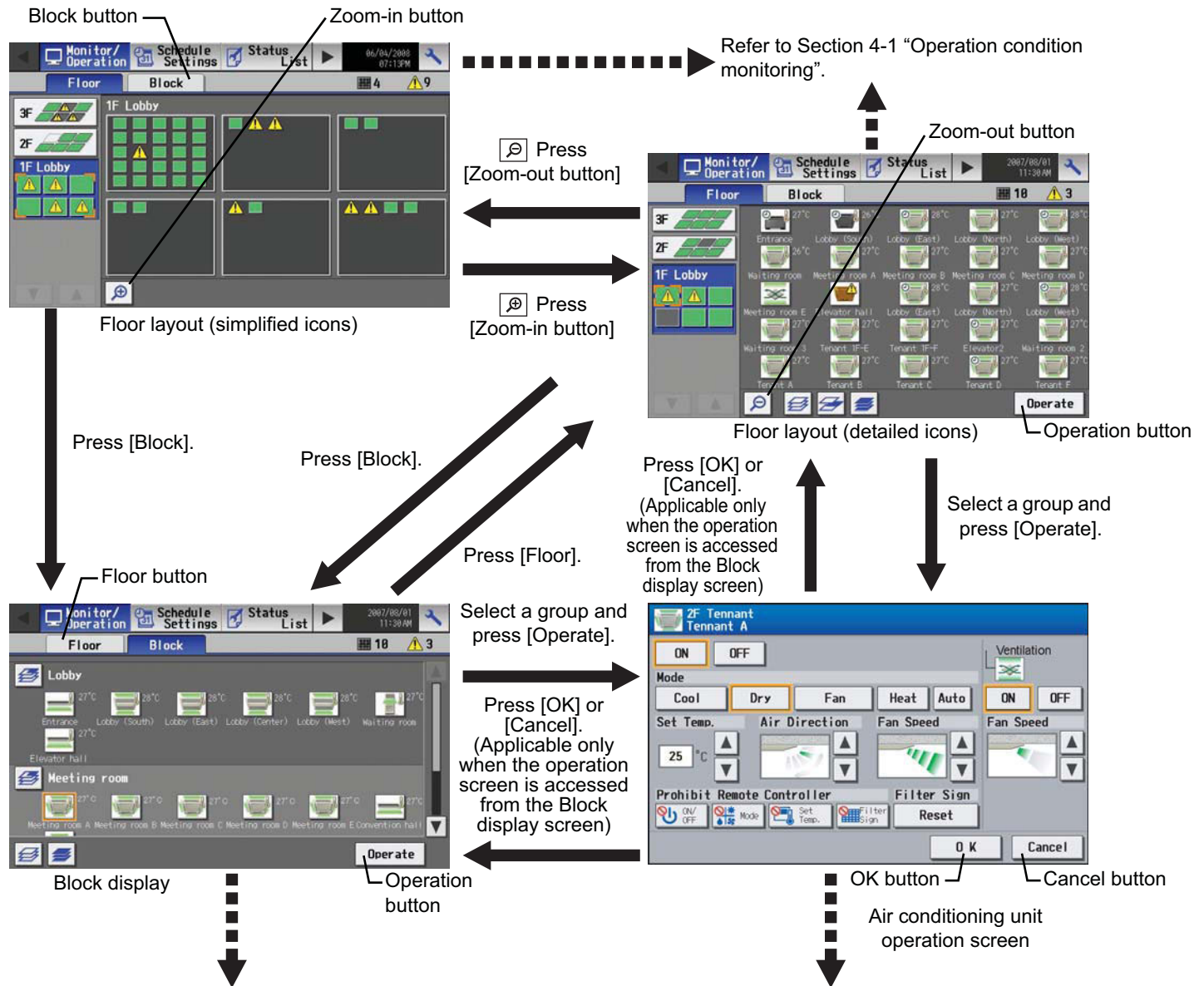
- If nothing appears on the display after touching the touch panel several times, the LCD backlight may be damaged. Since continued use may cause malfunctions, stop the operation, and contact the service center.
- Touching two points simultaneously will be interpreted as pressing a different point. To avoid malfunctions, only touch one point at a time.

4. User operation

Used the following two screens when user operation is performed.

- Floor layout/block display screensDisplays the operation status (ON/OFF) and error status of the air conditioning units
This is the screen that is normally used.
- Air conditioning unit operation setting screen....Collective or individual group operation of indoor units are performed on this screen (ON/OFF, operation mode, air flow direction, fan speed, temperature setting, timer enable/disable, prohibition/permission of operation from local remote controller, filter reset, room temperature display).

<Accessing the Floor layout, Block display, and Air conditioning unit operation setting screens>

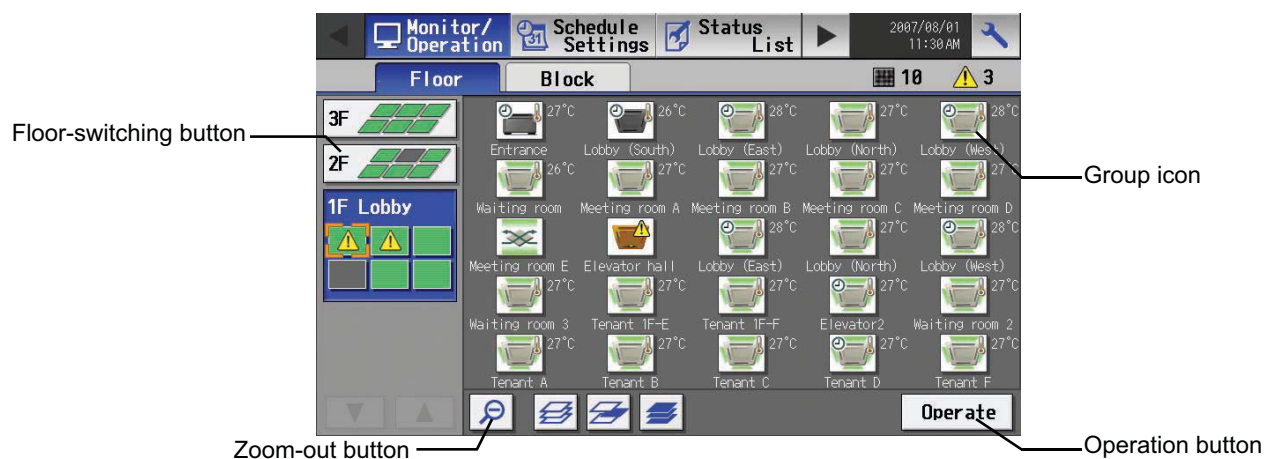


Refer to Section 4-1 "Operation condition monitoring".

Refer to Section 4-2 "Prohibiting the operation of air conditioning units from the local remote controllers".

4-1 Operation condition monitoring

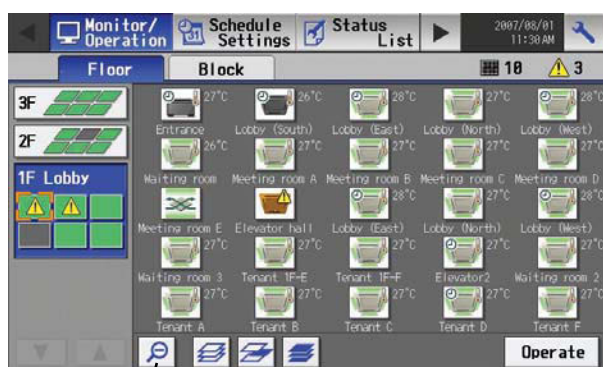
- This function displays the ON/OFF/Malfunction status of specific units or group.



(1) Operation method

- Note that operation methods are different for group operation and block operation.

<Group display (detailed icons)>



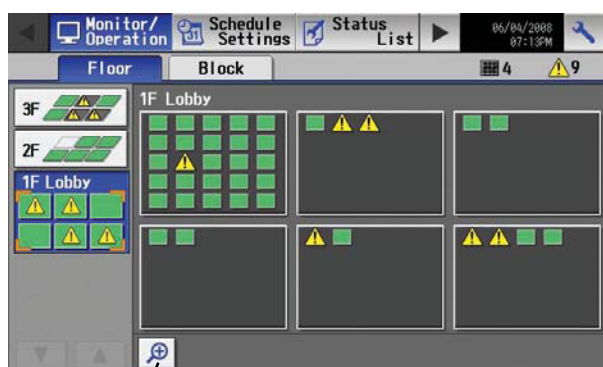
The operation (ON/OFF) and error status of the air conditioning units can be checked with the icons on the screen.



* If there is a device that cannot be identified, ? will appear over the icon of the device.

- Click on the icon of a group, and then click "Operate" to go into the screen that allows the operation of that group. On the screen, detailed information about the temperature, fan speed, air flow direction, prohibit/permit status of the remote controller, and mode can be checked. (If air conditioning unit group, ventilation equipment (LOSSNAY) group, general equipment group, and Hot Water Supply group are included in the selected group, a screen will appear, asking the user to select a group. Once the selection is made, an operation screen will appear.)
- Pressing the Zoom-out button takes the screen back to the screen with simplified icons.
- By pressing the floor switching button, air conditioning units on other floors can be checked. (Several types of icons will appear.)

<Group display (simplified icons)>



The operation (ON/OFF) and error status of the air conditioning units can be checked with the icons on the screen.

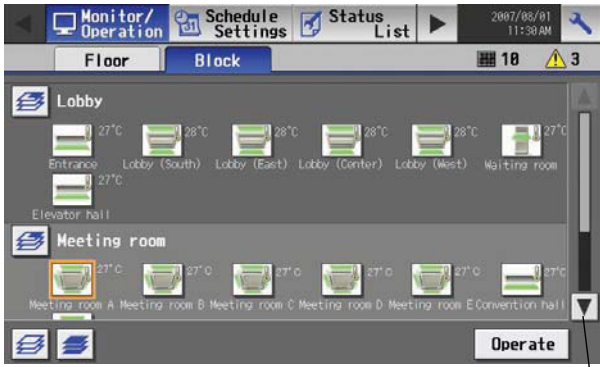


- Pressing the Zoom-in button will take the screen back to the screen with simplified icons.
- By pressing the floor switching button, air conditioning units on other floors can be checked.

Zoom-out button

Zoom-in button

<Block display>



The operation (ON/OFF) and error status of the air conditioning units can be checked with the icons on the screen.



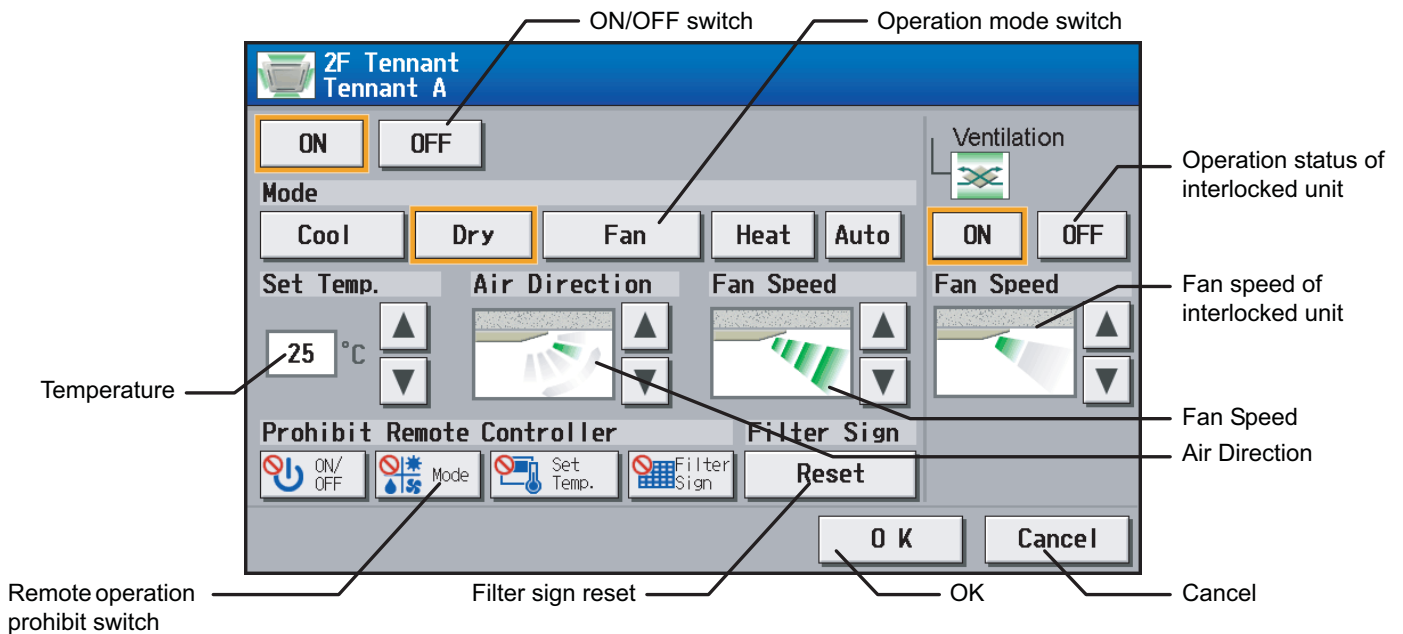
* If there is a device that cannot be identified, ? will appear over the icon of the device.

- Click on the icon of a group, and then click "Operate" to go into the screen that allows the operation of that group. On the screen, detailed information about the temperature, fan speed, air flow direction, prohibit/permit status of the remote controller, and mode can be checked.
- Press the scroll button and to see the status of the rest of the blocks that are not shown on the screen. (Several types of icons will appear.)

Scroll button

4-2 Prohibiting the operation of air conditioning units from the local remote controllers

(1) Air conditioning unit group

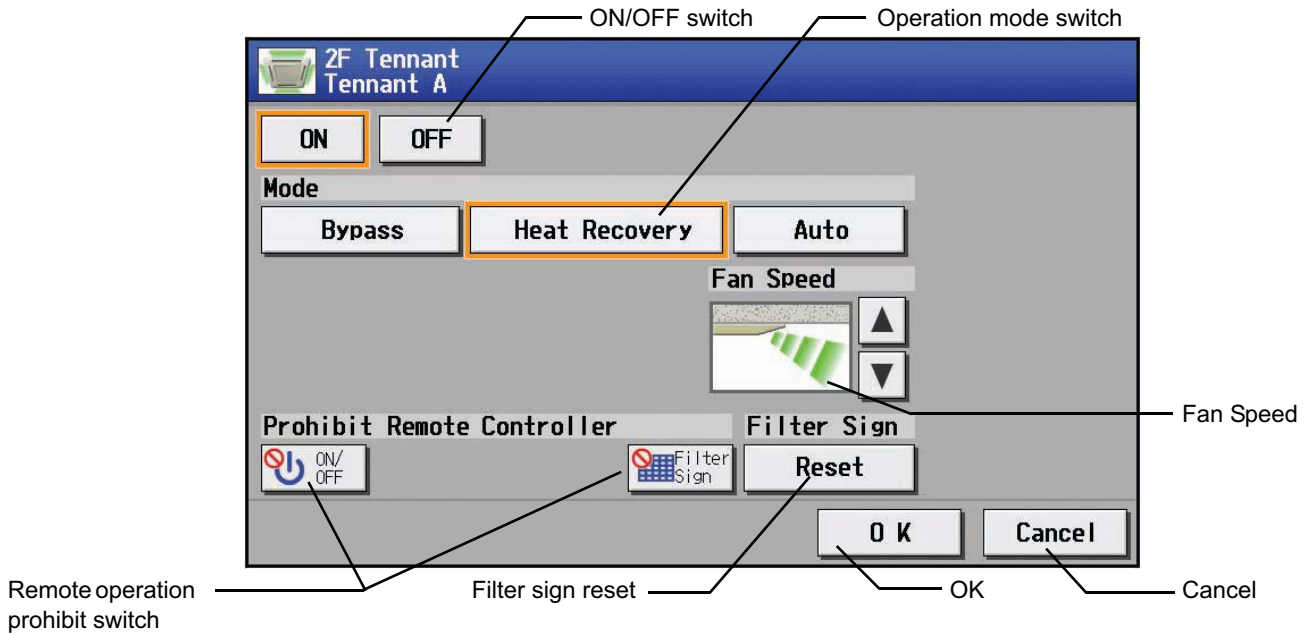


	Function	Operation method	Display
1	ON/OFF	Select the operation status (ON or OFF).	An orange frame will appear around the selected button.
2	MODE	Select the desired operation mode from one of the icons below "Mode".	An orange frame will appear around the selected mode.
3	Set Temperature	Set the temperature by using the Up/Down arrows below "Set Temp".	Pressing the Up/Down arrow increases/decreases the temperature by one degree respectively. The settable temperature range depends on the mode and model. If the Up arrow is pressed when the upper limit temperature is displayed, the lower limit temperature will appear, and the Down arrow vice versa.

Model	Cooling/Dry	Heating	Auto
Standard temp model	19 ~ 30°C [67 ~ 87°F]	17 ~ 28°C [63 ~ 83°F]	19 ~ 28°C [67 ~ 83°F]
Mid temp model (CITY MULTI)	14 ~ 30°C [57 ~ 87°F]	17 ~ 28°C [63 ~ 83°F]	17 ~ 28°C [63 ~ 83°F]
Mid temp model (Mr. Slim)	14 ~ 30°C [57 ~ 87°F]	14 ~ 28°C [57 ~ 83°F]	14 ~ 28°C [57 ~ 83°F]

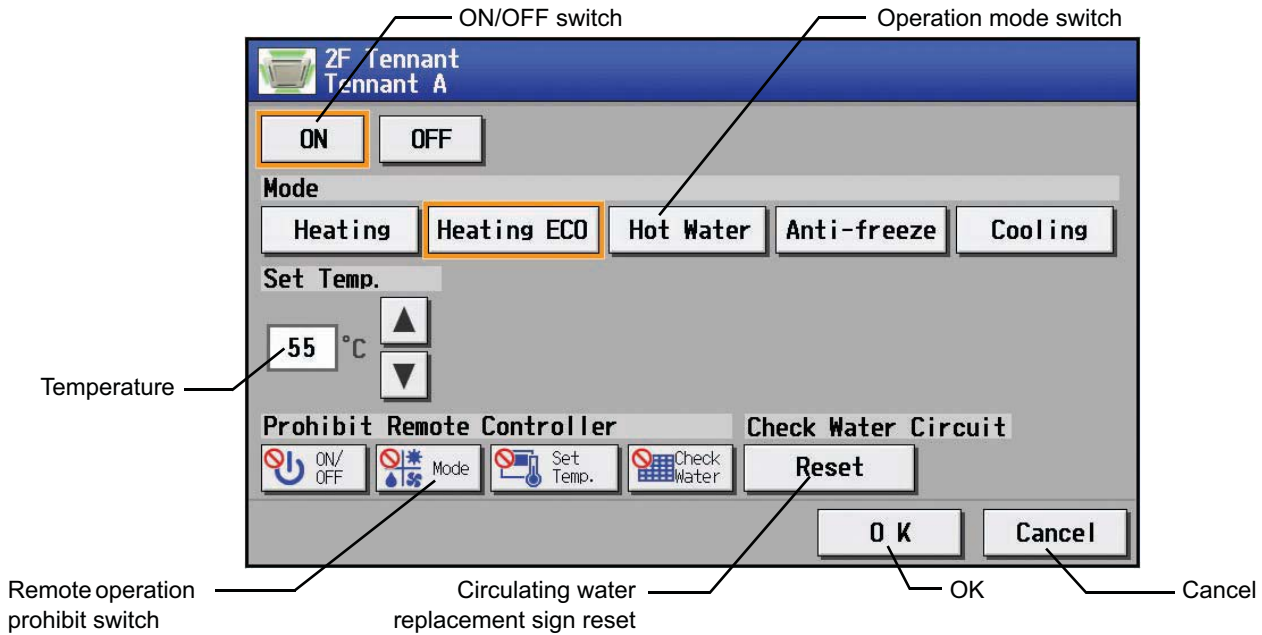
	Function	Operation method	Display																				
4	Air Direction Setting	Set the air flow direction with the Up/Down arrows below "Air Direction".	<p>5-directions model</p> <p>(Mid 3) → (Mid 2) → (Mid 1) → (Mid 0) → (Horizontal) → (Swing) → (Auto) → ...</p> <p>(Swing and Auto are not available on some models. Depending on the model four or five air flow directions are available.)</p>																				
5	Fan speed	Use the Up/Down arrows below "Fan Speed" to set the fan speed.	<p>4-speed model:</p> <p>(Low) → (Mid 2) → (Mid 1) → (High) → ... (Auto)</p> <p>("Auto" is not available on some models. Some models of units have only two or three fan speeds.)</p>																				
6	Remote Prohibit controller	Press the button that corresponds to the desired function and setting to permit or prohibit the operation from the remote controller. The functions that can be prohibited are as follows: ON/OFF, operation mode, temperature, and filter sign reset.	<p>Pressing of each button toggles through the following three options: Retention of current status → Permit → Prohibit</p> <table border="1"> <thead> <tr> <th></th> <th>Retention of current status</th> <th>Permit</th> <th>Prohibit</th> </tr> </thead> <tbody> <tr> <td>ON/OFF</td> <td></td> <td></td> <td></td> </tr> <tr> <td>Operation mode</td> <td></td> <td></td> <td></td> </tr> <tr> <td>Temperature setting</td> <td></td> <td></td> <td></td> </tr> <tr> <td>Filter sign reset</td> <td></td> <td></td> <td></td> </tr> </tbody> </table>		Retention of current status	Permit	Prohibit	ON/OFF				Operation mode				Temperature setting				Filter sign reset			
	Retention of current status	Permit	Prohibit																				
ON/OFF																							
Operation mode																							
Temperature setting																							
Filter sign reset																							
7	Filter sign reset	Press "Reset" under "Filter Sign".	Filter cleaning warning sign will be cleared. (Cumulative operation time is reset.)																				
8	Ventilation ON/OFF	Select the ON/OFF status for the interlocked unit.	An orange frame will appear around the selected operation status.																				
9	Ventilation Fan speed	Set the fan speed with the Up/Down arrows below "Fan Speed".	<p>2-speed model:</p> <p>(Low) → (High) → ...</p> <p>(Fan speed setting is not available on some models.)</p>																				
10	OK	Press the OK button to reflect the change.	Pressing the OK button saves the setting and takes the screen back to the previous screen (Floor layout or Block display).																				
11	Cancel	Press the Cancel button to cancel the change.	Pressing the Cancel button cancels the change and takes the screen back to the previous screen (Floor layout or Block display).																				

(2) Ventilation equipment (LOSSNAY) group



	Function	Operation method	Display												
1	ON/OFF	Select the operation status (ON or OFF).	An orange frame will appear around the selected button.												
2	MODE	Select the desired operation mode from one of the icons below "Mode".	An orange frame will appear around the selected mode.												
3	Fan speed	Use the Up/Down arrows below "Fun Speed" to set the fan speed.	<p>2-speed model: → → →...</p> <p>(Low) (High)</p> <p>(Fan speed setting is not available on some models.)</p>												
4	Remote Prohibit controller	Press the button that corresponds to the desired function and setting to permit or prohibit the operation from the remote controller. The functions that can be prohibited are as follows: ON/OFF and filter sign reset.	<p>Pressing of each button toggles through the following three options: Retention of current status → Permit → Prohibit</p> <table border="1"> <thead> <tr> <th></th> <th>Retention of current status</th> <th>Permit</th> <th>Prohibit</th> </tr> </thead> <tbody> <tr> <td>ON/OFF</td> <td></td> <td></td> <td></td> </tr> <tr> <td>Filter sign reset</td> <td></td> <td></td> <td></td> </tr> </tbody> </table>		Retention of current status	Permit	Prohibit	ON/OFF				Filter sign reset			
	Retention of current status	Permit	Prohibit												
ON/OFF															
Filter sign reset															
5	Filter sign reset	Press "Reset" under "Filter Sign".	Filter cleaning warning sign will be cleared. (Cumulative operation time is reset.)												
6	OK	Press the OK button to reflect the change.	Pressing the OK button saves the setting and takes the screen back to the previous screen (Floor layout or Block display).												
7	Cancel	Press the Cancel button to cancel the change.	Pressing the Cancel button cancels the change and takes the screen back to the previous screen (Floor layout or Block display).												

(3) Hot water supply equipment group



	Function	Operation method	Display																				
1	ON/OFF	Select the operation status (ON or OFF).	An orange frame will appear around the selected button.																				
2	MODE	Select the desired operation mode from one of the icons below "Mode".	An orange frame will appear around the selected mode.																				
3	Set Temperature	Set the temperature by using the Up/Down arrows below "Set Temp".	Pressing the Up/Down arrow increases/decreases the temperature by one degree respectively. The settable temperature range depends on the mode and model. If the Up arrow is touched when the upper limit temperature is displayed. The lower limit temperature will appear, and the Down arrow vice versa. [Air To Water Booster unit]* ³ [Air To Water HEX unit]* ³ Heating: 30 ~ 50°C / 87~122°F Heating: 30 ~ 45°C / 87~113°F Heating ECO: 30 ~ 45°C / 87~113°F Heating ECO: 30 ~ 45°C / 87~113°F Hot Water: 30 ~ 70°C / 87~158°F Hot Water: 30 ~ 90°C / 87~194°F Anti-freeze: 10 ~ 45°C / 50~113°F Anti-freeze: 10 ~ 45°C / 50~113°F Cooling: Invalid Cooling: 10 ~ 30°C / 50~87°F * Temperatures are displayed Fahrenheit if Fahrenheit is selected.																				
4	Remote Prohibit controller	Press the button that corresponds to each of the following buttons to permit or prohibit access to these functions: ON/OFF, operation mode, temperature, and circulating water replacement.	Pressing of each button toggles through the following three options: Retention of current status → Permit → Prohibit <table border="1" style="width: 100%; text-align: center;"> <thead> <tr> <th></th> <th>Retention of current status</th> <th>Permit</th> <th>Prohibit</th> </tr> </thead> <tbody> <tr> <td>ON/OFF</td> <td></td> <td></td> <td></td> </tr> <tr> <td>Operation mode</td> <td></td> <td></td> <td></td> </tr> <tr> <td>Temperature setting</td> <td></td> <td></td> <td></td> </tr> <tr> <td>Circulating water replacement</td> <td></td> <td></td> <td></td> </tr> </tbody> </table>		Retention of current status	Permit	Prohibit	ON/OFF				Operation mode				Temperature setting				Circulating water replacement			
	Retention of current status	Permit	Prohibit																				
ON/OFF																							
Operation mode																							
Temperature setting																							
Circulating water replacement																							
5	Circulating water replacement sign reset	Press the OK button with the circulating water replacement sign reset button being touched.	The circulating water replacement sign is reset.																				
6	OK	Press the OK button to reflect the change.	Pressing the OK button saves the setting and takes the screen back to the previous screen (Floor layout or Block display).																				
7	Cancel	Press the Cancel button to cancel the change.	Pressing the Cancel button cancels the change and takes the screen back to the previous screen (Floor layout or Block display).																				

4-3 Setting Schedules

4-3-1 Setting the schedule without a registered license

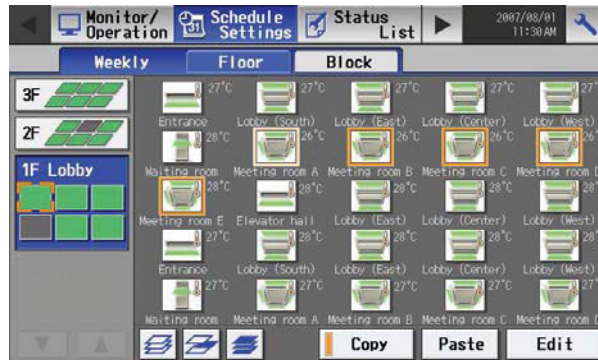
If a license has not been acquired, only the weekly schedule functions available.

• Setting the Weekly Schedule

Touch the menu item [Schedule Settings] and click [Weekly] in the sub menu to display the Weekly Schedule setting screen. To set a weekly schedule, you first must select what will be the target of this schedule and then set the schedule details from Sunday right through to Saturday.

Note: When the contents of an operation are executed as part of a schedule these contents will continue to be in effect until they are changed by a schedule or browser etc. Therefore, if you are setting a schedule that is only for a particular day, be sure to set your schedule in a way that will not impact on the next day's operation.

For example, if you wish to prohibit operations being performed from the remote controller after 17:00, set a Prohibit operation for 17:00 and set an Enable operation for 23:59.



(1) Select the type of schedule settings to make.

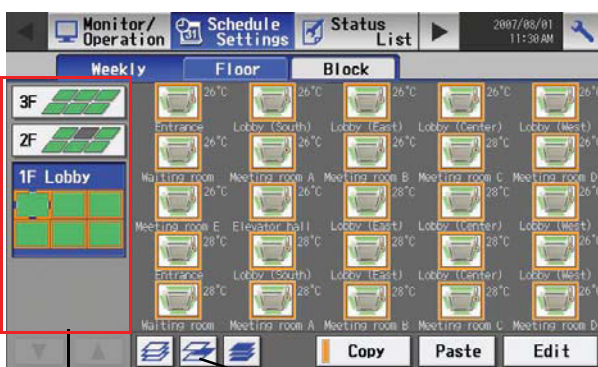
(1-1) Group



To make the settings for a group, select the group by touching the corresponding icon on the weekly schedule setting screen (floor layout or block display). Multiple groups can be selected. An orange frame appears on the group that has been selected. Selection can be cancelled by touching the icon again. Touch the Cancel button to deselect all.

* Each group is represented with an icon and a group name.

(1-2) Floor

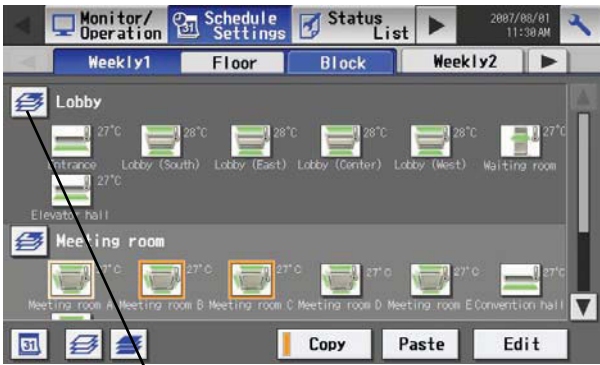


Floor selection button

Select-all-units-on-the floor button

To make the settings for all groups on a given floor, select the floor on the floor layout screen under the weekly schedule setting screen menu, and touch the Select-all-units-on-the floor button. An orange frame will appear around the icons of all groups on the selected floor, and also around the floor selection button. Only a single floor can be selected at a time.

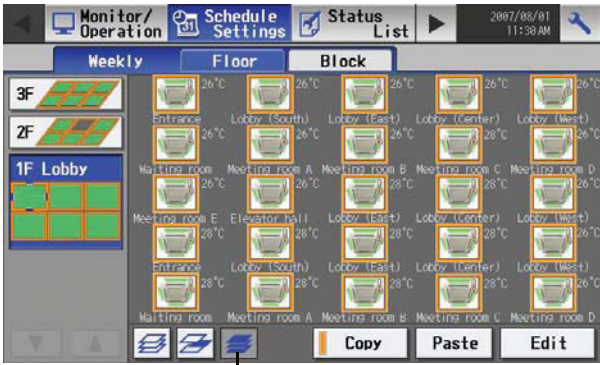
(1-3) Block



Block selection button

To make the settings for a block or blocks, select the block selection button on the block display screen under the weekly schedule setting screen by touching it. An orange frame will appear around the icons that correspond to the selected blocks.

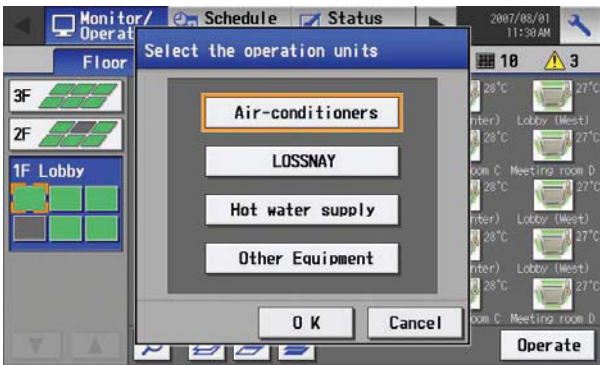
(1-4) All groups



Select-All-Units button

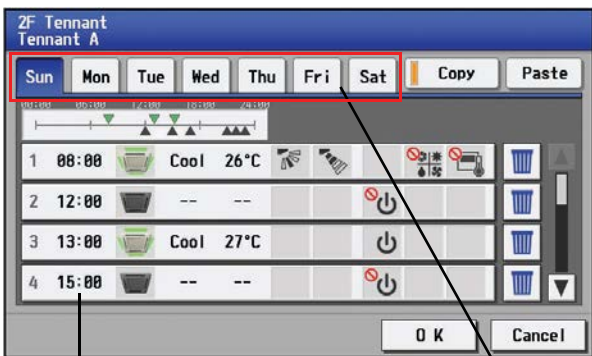
To make the settings for all groups, touch the Select-all-units button on the weekly schedule setting screen (floor layout or block display screen). An orange frame appears around the icons of all groups. After making the selection, touch the [Edit] button at the right bottom corner of the screen to bring up the weekly schedule screen.

* If the air conditioning unit group, ventilation equipment (LOSSNAY) group, general equipment group, and Hot Water Supply group are included in the selected group, a screen will appear asking you to select the type of equipment. Once the selection has been made, a weekly schedule screen will appear.



Equipment type selection screen

(2) Select the day of the week

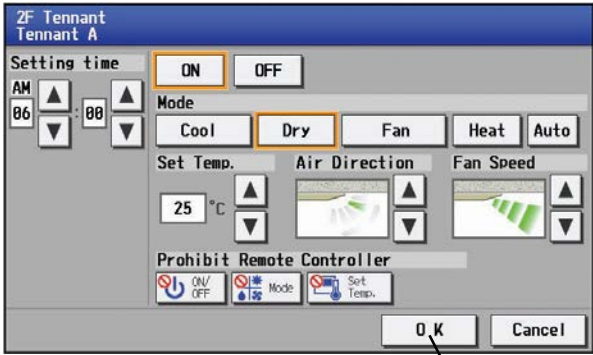


Schedule content button

Days of the week menu

Select the days of the week from the weekly schedule setting screen and touch the schedule content button to bring up the schedule content setting screen.

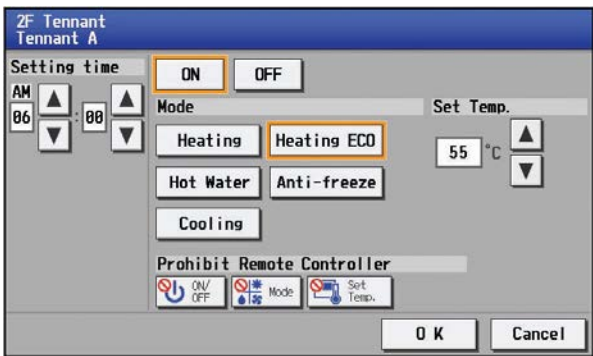
(3) Set the contents of the schedule



(Air Conditioner) OK button



(LOSSNAY)



(Hot Water Supply)

Make the settings for the execution time, operation patterns (ON/OFF, operation mode, setting temperature, airflow direction, fan speed, remote controller operation prohibition) on the schedule content setting screen, and then touch the [OK] button. Not all settings need to be made. The settings for only the operation mode or the setting temperature, for example, can be made.

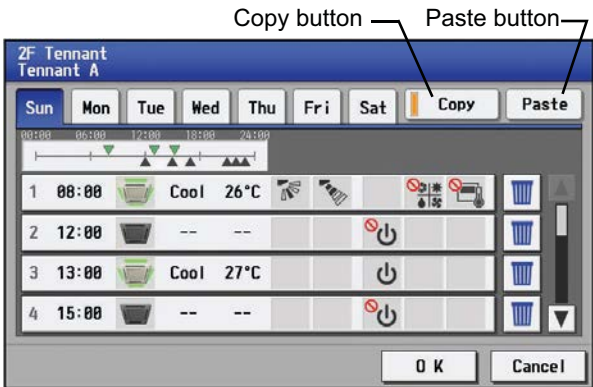
Note: When setting a schedule for all groups or for a block, it is possible to set all operation modes such as Auto mode etc, but if some targeted air conditioner units do not have such a function, then those units will not run in the specified mode. When setting the schedule, consider what functions are supported by the air conditioner units.

Note: When setting a schedule for all groups or for a block, it is possible to set prohibit remote controller items individually. When allowing remote controller operation under K control, however, all items must be set enable.

Note: When setting a schedule for ventilator units, the temperature setting is not displayed. Moreover, the prohibit remote controller operation is simply [ON/OFF].

Note: Only the ON/OFF operation is possible on the general equipment.

(4) Copy a schedule to another day of the week or to another group



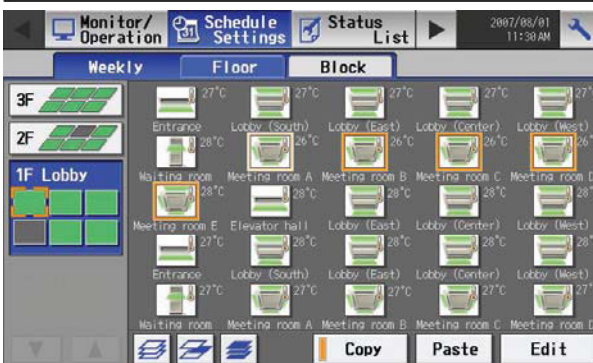
Copy button Paste button

To copy the schedule of a given day to another day, select the days of the week from the weekly schedule setting screen, touch [Copy] to select it, select a day to copy the schedule to, and touch [Paste].

To copy the weekly schedule for one group to another group, select the group from the weekly schedule setting screen (Floor layout or block display screen), touch [Copy], select a group to copy the schedule to, and touch [Paste].

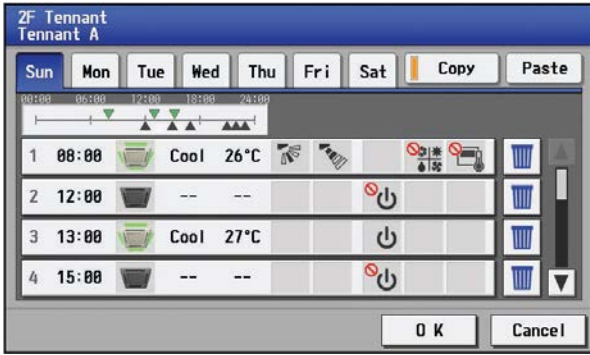
* The settings of one type of equipment cannot be copied to the settings of a different type of equipment. (i.e., The settings of air conditioning units cannot be copied to ventilation equipment settings.)

* Available operation modes and setting temperature range varies with models.



Copy Paste Edit

(5) Save the contents of schedule



After all the settings have been made, touch the [OK] button to save the schedule settings.
Touch the [Cancel] button to go back to the previously saved settings without making any changes.

4-3-2 Setting the schedule with a registered license

When a license is registered, it is possible to set different weekly (2 types)/annual/today's schedules for each air conditioner group. Moreover, for any weekly/annual/today's schedule run for a particular day, the priority in which it is run will be from the highest and the order will be [Today's], [Annual], [Weekly]. Two types of weekly schedule (Summer/Winter) can be set.

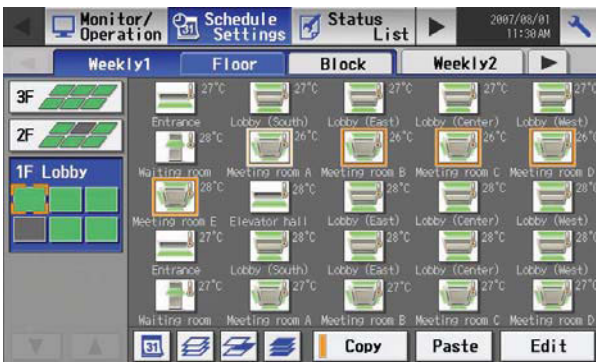
4-3-2-1 Setting the Weekly Schedule

Touch the menu item [Schedule Settings] and touch [Weekly1] or [weekly2] in the sub menu to display the Weekly Schedule setting screen. To set a weekly schedule, you first must select what will be the target of this schedule and then set the schedule details from Sunday right through to Saturday.

Note: When the contents of an operation are executed as part of a schedule these contents will continue to be in effect until they are changed by a schedule or browser etc. Therefore, if you are setting a schedule that is only for a particular day, be sure to set your schedule in a way that will not impact on the next day's operation.

For example, if you wish to prohibit operations being performed from the remote controller after 17:00, set a Prohibit operation for 17:00 and set an Enable operation for 23:59.

(1) Select the schedule to set.

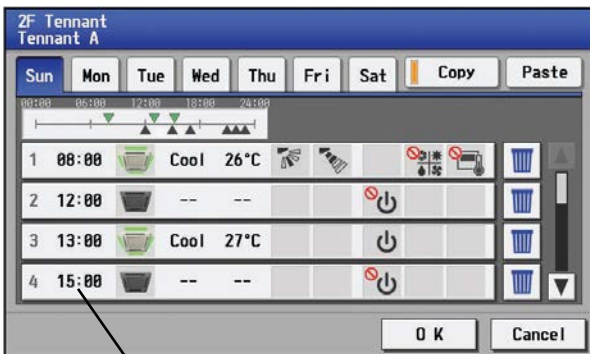


Select either [Weekly 1] or [Weekly 2] from the sub menu. (Two types of weekly schedule patterns are available if the license is registered.)

(2) Select the type of schedule settings to make.

Select the type of schedule settings to make by referring to Section 1 above under "Select the type of schedule settings to make."

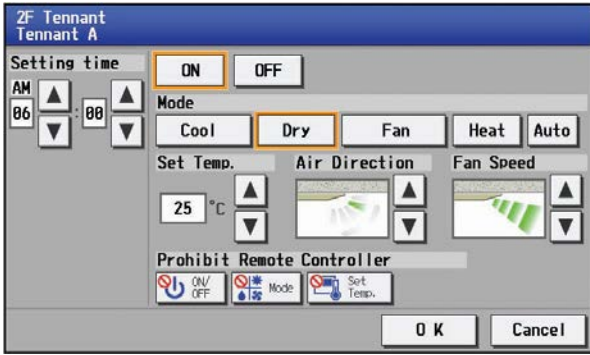
(3) Select the day of the week



Schedule content button

Select the days of a week from the weekly schedule screen and touch the schedule content button to bring up the schedule content setting screen.

(4) Set the contents of the schedule



(Air Conditioner)

Refer to 4-3-1 (3) for the figure of LOSSNAY and hot water supply equipment.

Make the settings for the execution time and operation patterns (ON/OFF, operation mode, setting temperature, airflow direction, fan speed, remote controller operation prohibition) on the schedule content setting screen, and then touch the [OK] button. Not all settings need to be made. The settings for only the operation mode or the setting temperature, for example, can be made.

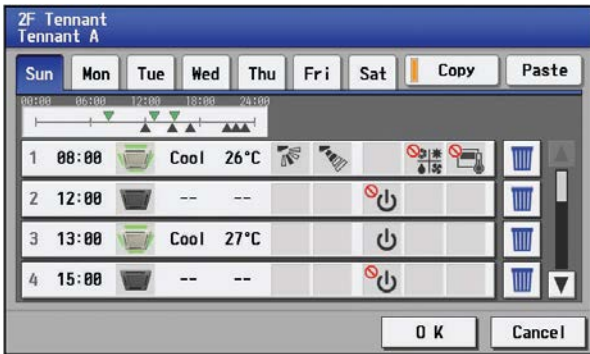
Note: When setting a schedule for all groups or for a block, it is possible to set all operation modes such as Auto mode etc, but if some targeted air conditioner units do not have such a function, then those units will not run in the specified mode. When setting the schedule, consider what functions are supported by the air conditioner units.

Note: When setting a schedule for all groups or for a block, it is possible to set prohibit remote controller items individually. When allowing remote controller operation under K control, however, all items must be set enable.

Note: When setting a schedule for ventilator units, the temperature setting is not displayed. Moreover, the prohibit remote controller operation is simply [ON/OFF].

Note: Only the ON/OFF operation is possible on the general equipment.

(5) Copy a schedule to another day of the week or to another group



Refer to the figures under 4-3-1 (4) for how to copy the schedule of one group to another.

To copy the schedule of a given day to another day, select the days of the week from the weekly schedule setting screen, touch [Copy] to select it, select a day to copy the schedule to, and touch [Paste].

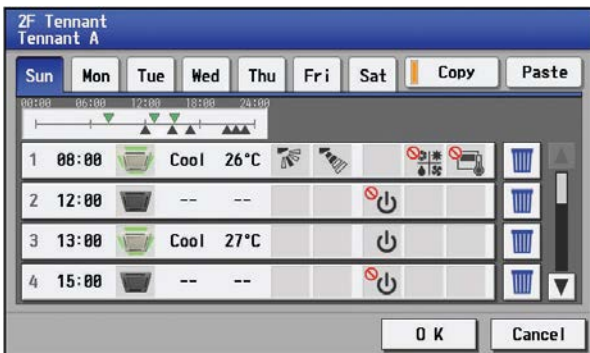
To copy the weekly schedule of one group to another group, select the group from the weekly schedule setting screen (Floor layout or block display screen), touch [Copy], select a group to copy the schedule to, and touch [Paste].

* The settings of one type of equipment cannot be copied to the settings of a different type of equipment. (i.e., The settings of air conditioning units cannot be copied to ventilation equipment settings.)

* Available operation modes and setting temperature range varies with models.

* Schedules cannot be copied to or from between [Weekly 1] and [Weekly 2].

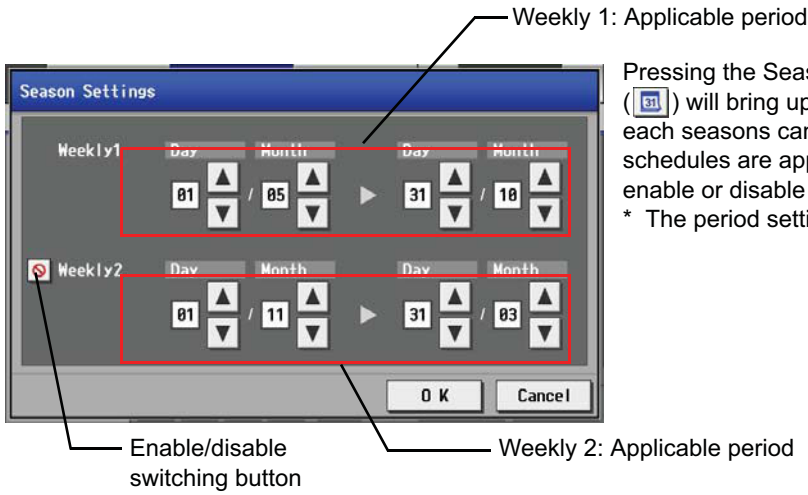
(6) Save the contents of schedule



After all the settings have been made, touch the [OK] button to save the schedule settings.

Touch the [Cancel] button to go back to the previously saved settings without making any changes.

(7) Define the seasons



Pressing the Season Settings button on the schedule setting screen (E31) will bring up the Season Settings screen, and the duration of each seasons can be defined, to which [Weekly 1] or [Weekly 2] schedules are applied. Touch the “Enable/disable switching button” to enable or disable the “Weekly 2” setting.
 * The period setting can go past 12/31 (i.e., 11/1~3/31).

4-3-2-2 Setting the annual schedule (Applicable only when the license is registered)

Selecting [Schedule Setting] from the main menu on the [Main operation screen] will bring up the schedule setting screen. Subsequently, selecting [Annual] from the sub menu will bring up the annual schedule setting screen. You can use the annual schedule to set schedules for days such as public holidays and summer vacation that need to be scheduled differently to the weekly schedule. For each air conditioner group, it is possible to set 50 day-long settings up to 24 months into the future (including the current month).

Settings for days that have passed will be deleted automatically.

To make the settings for the annual schedule, first select the item to be set, and then touch [Edit] to bring up the annual schedule screen. Make the settings for the five patterns (pattern A through E) on the weekly schedule screen, and then assign those patterns to appropriate dates (e.g., holidays, or summer break).

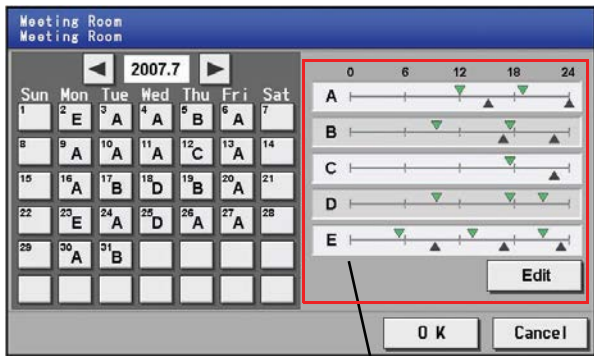
Note: When the contents of an operation are executed as part of a schedule these contents will continue to be in effect until they are changed by a schedule or browser etc. Therefore, if you are setting a schedule that is only for a particular day, be sure to set your schedule in a way that will not impact on the next day’s operation.

For example, if you wish to prohibit operations being performed from the remote controller after 17:00, set a Prohibit operation for 17:00 and set an Enable operation for 23:59.

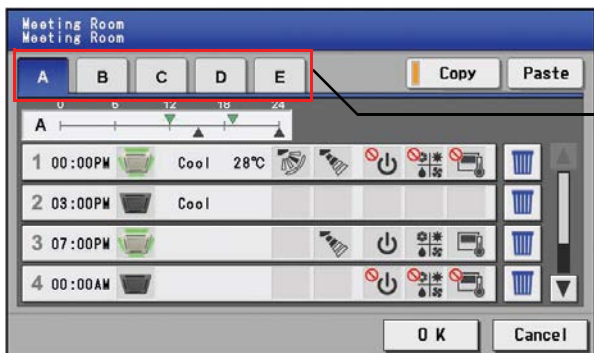
(1) Select the item to be set.

As with the weekly schedule setting, select the item to be set. (Refer to 4-3-1 (1).)

(2) Select a pattern.

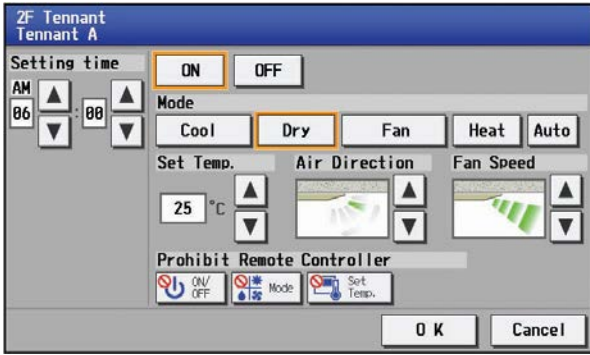


Touching the alphabetic letters in the calendar or touching the Edit button in the annual schedule screen will bring up the schedule pattern setting screen. Select the pattern you want to edit.



Pattern Menu

(3) Edit the patterns.



(Air Conditioner)

Refer to 4-3-1 (3) for the figure of LOSSNAY and hot water supply equipment.

After selecting the pattern, touch the schedule content button to bring up the schedule content setting screen. Make the settings for the execution time and operation patterns (ON/OFF, operation mode, setting temperature, airflow direction, fan speed, remote controller operation prohibition) on the schedule content setting screen, and then touch the [OK] button. Not all settings need to be made. The settings for only the operation mode or the setting temperature, for example, can be made.

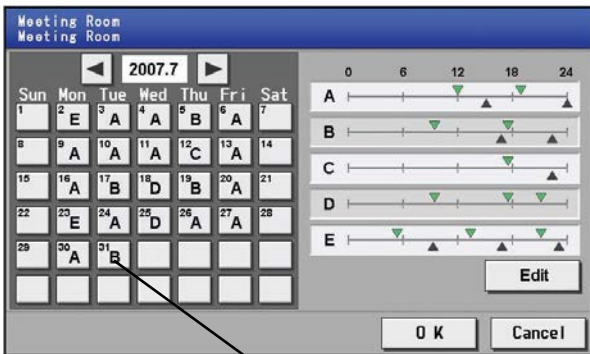
Note: When setting a schedule for all groups or for a block, it is possible to set all operation modes such as Auto mode etc, but if some targeted air conditioner units do not have such a function, then those units will not run in the specified mode. When setting the schedule, consider what functions are supported by the air conditioner units.

Note: When setting a schedule for all groups or for a block, it is possible to set prohibit remote controller items individually. When allowing remote controller operation under K control, however, all items must be set enable.

Note: When setting a schedule for ventilator units, the temperature setting is not displayed. Moreover, the prohibit remote controller operation is simply [ON/OFF].

Note: Only the ON/OFF operation is possible on the general equipment.

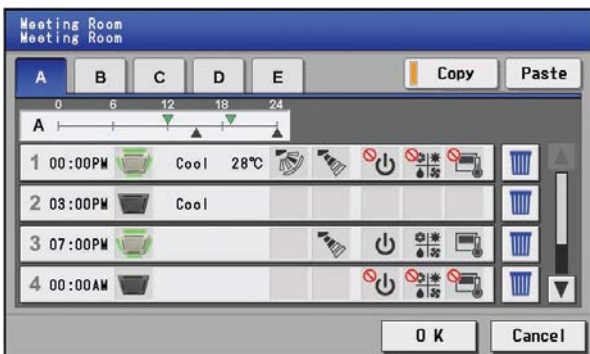
(4) Assign schedule patterns to special dates.



Date button

Assign the schedule patterns to the dates to which regular weekly schedule does not apply, such as holidays and summer break. Touch the desired date on the calendar to see which pattern is assigned to the date. Each touching of the button will cycle through the letters ABCDE and blank, then back to A. Touch the button until you get the pattern you want. Select blank to cancel the selection.

(5) Copy a schedule to another pattern or to another group



Refer to the figures under 4-3-1 (4) for how to copy the schedule of one group to another.

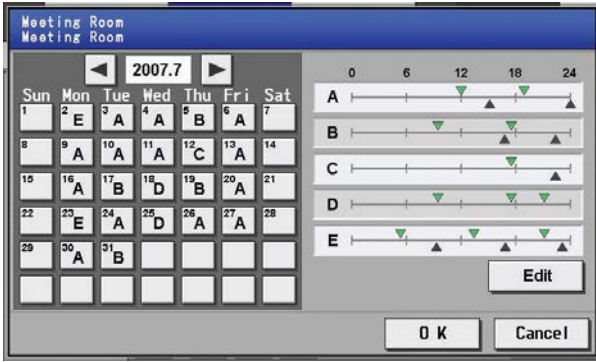
To copy a pattern to another, select the pattern from the pattern menu on the schedule pattern setting screen, touch [Copy] to select it, select a pattern to copy to, and touch [Paste].

To copy the annual schedule for one group to another group, select the group from the annual schedule setting screen (Floor layout or block display screen), touch [Copy], select a group to copy the schedule to, and touch [Paste].

* The settings of one type of equipment cannot be copied to the settings of a different type of equipment. (i.e., The settings of air conditioning units cannot be copied to ventilation equipment settings.)

* Available operation modes and setting temperature range varies with models.

(6) Save the contents of schedule



After all the settings have been made, touch the [OK] button to save the schedule settings.
Touch the [Cancel] button to go back to the previously saved settings without making any changes.

4-3-2-3 Setting the current date schedule

Selecting [Schedule Setting] from the main menu on the [Main operation screen] will bring up the schedule setting screen. Subsequently, selecting [Today] from the sub menu will bring up the current day schedule setting screen. By using this function, schedule for the current date can be set without having to change the weekly or annual schedule. First select the item to be set, and then set the schedule.

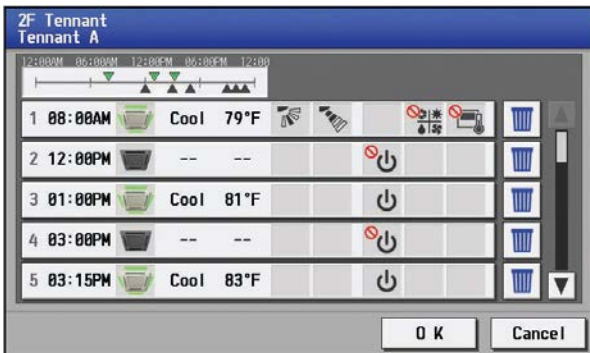
Note: When the contents of an operation are executed as part of a schedule these contents will continue to be in effect until they are changed by a schedule or browser etc. Therefore, if you are setting a schedule that is only for a particular day, be sure to set your schedule in a way that will not impact on the next day's operation.

For example, if you wish to prohibit operations being performed from the remote controller after 17:00, set a Prohibit operation for 17:00 and set an Enable operation for 23:59.

(1) Select the item to be set.

As with the weekly schedule setting, select the item to be set. (Refer to 4-3-1 (1).)

(2) Set the contents of the schedule



Touch the schedule content button on the current day schedule screen to bring up the schedule content setting screen. Make the settings for the execution time and operation patterns (ON/OFF, operation mode, setting temperature, airflow direction, fan speed, remote controller operation prohibition) on the schedule content setting screen, and then touch the [OK] button. Not all settings need to be made. The settings for only the operation mode or the setting temperature, for example, can be made.

Note: When setting a schedule for all groups or for a block, it is possible to set all operation modes such as Auto mode etc, but if some targeted air conditioner units do not have such a function, then those units will not run in the specified mode. When setting the schedule, consider what functions are supported by the air conditioner units.

Note: When setting a schedule for all groups or for a block, it is possible to set prohibit remote controller items individually. When allowing remote controller operation under K control, however, all items must be set enable.

Note: When setting a schedule for ventilator units, the temperature setting is not displayed. Moreover, the prohibit remote controller operation is simply [ON/OFF].

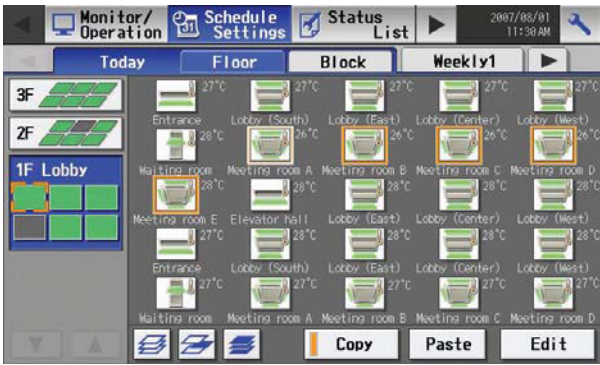
Note: Only the ON/OFF operation is possible on the general equipment.



(Air Conditioner)

Refer to 4-3-1 (3) for the figure of LOSSNAY and hot water supply equipment.

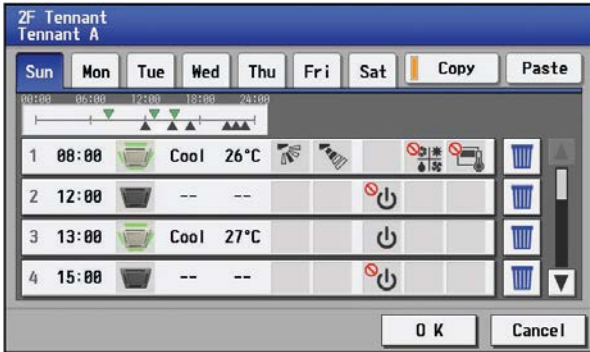
(3) Copy a schedule to another group



To copy the settings of the current day schedule in one group to another, select the group from the current day schedule setting screen (Floor layout or block display screen), touch [Copy], select a group to copy the schedule to, and touch [Paste].

- * The settings of one type of equipment cannot be copied to the settings of a different type of equipment. (i.e., The settings of air conditioning units cannot be copied to ventilation equipment settings.)
- * Available operation modes and setting temperature range varies with models.

(4) Save the contents of schedule



After all the settings have been made, touch the [OK] button to save the schedule settings. Touch the [Cancel] button to go back to the previously saved settings without making any changes.

4-4 Checking the List of Malfunctioning Units

Touch the [Status list] in the main operation screen menu, and then touch [Malfunction] to see a list of units that are currently in error.

	Group Name	Address	Error Code
1	1F Lobby (South)	002	5101
2	1F Lobby (Center)	004	5101
3	1F Lobby (West)	005	5101
4	3F Convention hall	013	6608
5	3F Hall way	014	6608

Floor name or Block name
The floor name or block name is displayed here.

Group name
The name of the group is displayed here.

Unit address
The unit address is displayed here.

Number of malfunctioning units
The number of malfunctioning units is displayed here.

Error code
The error code is displayed here.

All reset
All reset

Item	Description
All reset	Touch [All Reset] when you want to reset the errors on all the malfunctioning units at once.
Number of malfunctioning units	The number of malfunctioning units is displayed.
Group Name	The name of the group that the unit in error belongs to appears here. Note: If a unit, such as an outdoor unit or system controller, has not been registered in a group that is the object of the operation, this area will be blank.
Unit address	The address of the unit in error appears here.
Error code	The error code of the error that is causing the malfunction is displayed. Touch the error code to see the explanation.

Error code display

Error code display

5101
Temperature sensor trouble - Sensor No.
: 01

Explanation of error

OK

4-5 Checking the List of Units with a Triggered Filter Sign

Touching [Status List] on the Main operation screen and then touching [Filter signs] in the sub menu will bring up a list of units whose filter sign is turned on.

Floor name or Block name

Group name
The name of the group is displayed here.

Unit address
The unit address is displayed here.

Number of units with triggered filter signs
The number of units with currently triggered filter signs is displayed here.

Reset units individually
Touch to reset the filter sign for the group the units belong to.

All reset
Touch to reset the filter sign on all units with triggered filter signs.

	Group name	Address	Reset
1	1F Lobby Meeting room 1A	001	Reset
2	1F Lobby Meeting room 1A	002	Reset
3	1F Lobby Meeting room 1A	003	Reset
4	1F Lobby Meeting room 1A	004	Reset
5	1F Lobby Meeting room 1A	005	Reset

Item	Description
All reset	Touch [All Reset] when you want to reset the filter sign on all units with a triggered filter sign at once.
Reset units individually	Touch [Reset] when you want to reset the filter sign for the group the units belong to.
Number of units with triggered filter signs	The number of units with currently triggered filter signs is displayed.
Group Name	The name of the group appears here that contains the unit whose filter sign is turned on.
Unit address	The address of the units with its filter sign turned on appears here.

4-6 Checking the Malfunction Log

Touch the [Unit error] in the sub menu under [Log] on the main operation screen to see the unit error history (latest 64 events). Click [Communication error] in the sub menu to see the M-NET transmission error history (latest 64 events).

Unit error log
Click to display the unit error log.

Occurred time
The date and time of error is displayed here.

Error source address
The unit address of where the error occurred is displayed here.

Error detection source address
The unit address of where the error was detected is displayed here.

Communication error log
Touch to display the communication error log.

Error recovery date and time
The date and time of the error recovery is displayed here.

Error code
The error code of the error is displayed here.

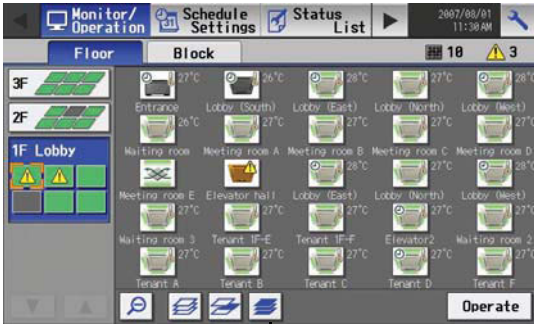
Clear log
Click to clear the error log.

	Occurred	Address(Detection)	Error code	Recovery
1	2007-10-10 02:43PM	001 (051)	5010	2007-10-11 10:11AM
2	2007-10-10 11:15AM	002 (051)	5010	2007-10-11 10:11AM
3	2007-10-07 11:00PM	003 (053)	5010	2007-10-08 10:07AM
4	2007-10-01 00:34PM	004 (053)	5010	2007-10-01 05:56PM
5	2007-09-24 09:09AM	005 (053)	5010	2007-09-25 08:32AM

Item	Description
Unit error log	Touch [Unit Error] to display the unit error log.
Communication error log	Touch [Communication Error] to display the M-NET communication error log.
Clear log	Touch [Clear Log] to clear the error log that is being displayed.
Time Occurred	The date and time of when the error occurred is displayed.
Error source address	The unit address of where the error occurred is displayed.
Error detection source address	The unit address of where the error was detected is display.
Error code	The error code of the error is displayed.
Time Recovered	The date and time of the error recovery is displayed.

5. Initial Settings

5-1 Bringing up the settings screen



Touch
[Wrench Icon]



Touching the setting change button [Wrench Icon] at the right top corner of the main operation screen will bring up the login screen. Enter the user name and password by touching each button, then touch the login button. If the user name and the password are correct, the setting change window will appear.

* Use the keyboard that appears to enter user name and password.

Note: When the power to the AG-150A is turned on for the first time, the Language Selection screen will appear (Refer to section 5-4-2 (4)). Once the display language has been selected, the Date and Time screen will appear (Refer to section 5-2).

5-2 Setting the Current Date and Time

Touch [Initial settings] on the setting change window, and then touch [Date and Time] on in the sub menu to bring up the date/time setting screen. Enter the date and time, and touch [Save Settings] to save the settings.

* If the current time is moved forward while the scheduled operation is performed, the operation that was scheduled to take place during the time that was skipped will not be performed.

* Changing the date and/or time when the charging function is in use can affect the calculation of the charges.

Note: If the user logs in as a building manager, some of the operations may be prohibited.

Menu - Points to the top navigation bar containing 'Initial Settings', 'User Info', and 'Maintenance'.

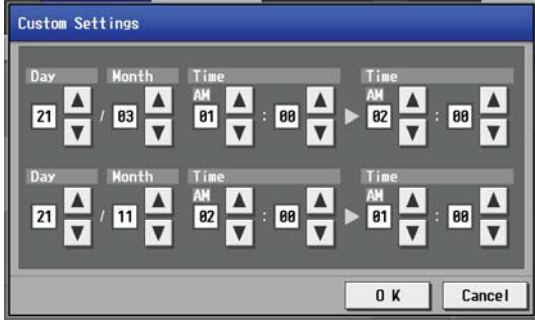
Sub Menu - Points to the 'Date and Time' tab in the top navigation bar.

Current date/time - Enter the current date and time here. Points to the date fields (Day: 22, Month: 08, Year: 2008).

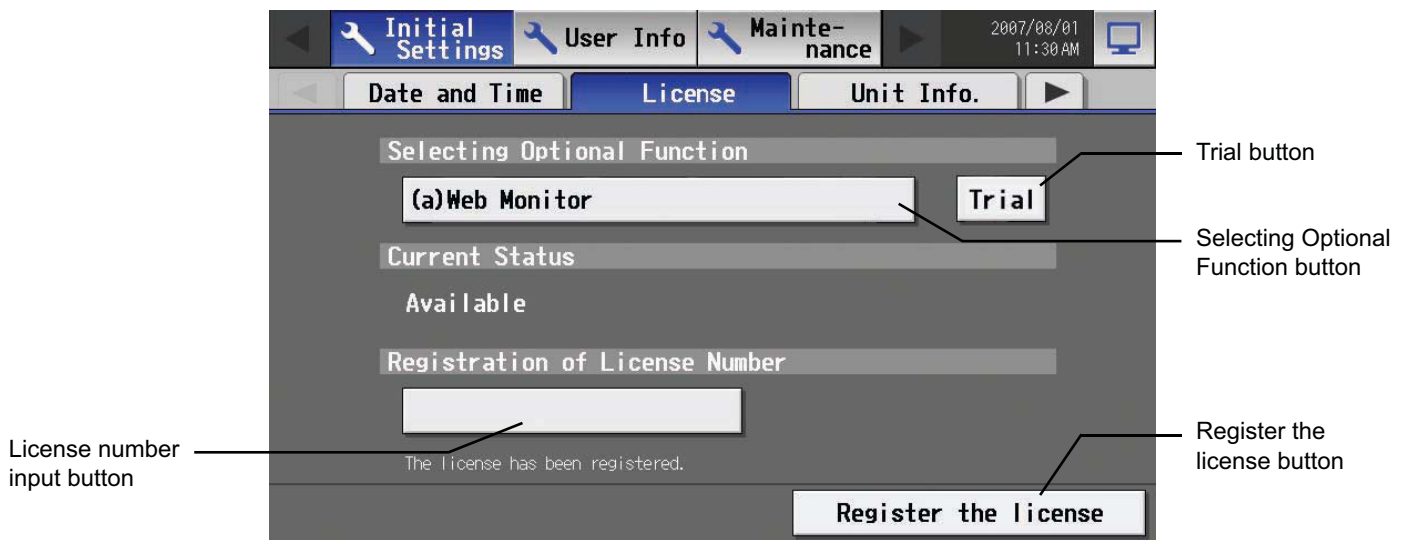
Summer time setting - Click to set the daylight saving time. Points to the 'Daylight saving changes' section with 'Custom settings' and 'Edit' buttons.

Custom setting button - Points to the 'Custom settings' button.

Save settings - Click to set the current date and time. Points to the 'Save Settings' button at the bottom.

Item	Description
Current date/time	Use the up/down buttons to set the date and time.
Summer time setting	This button is used to set Daylight Saving Time. Select your country from the list of countries that appears when this button is touched. Select [----] when this function is not used. To enter a country name that is not on the list, select [Custom settings] and manually enter the country name.
Custom setting	Set the beginning and the ending date/time of the daylight saving time if [Custom settings] is selected to manually enter a country name. 
Save Settings	Touch the [Date/Time Set] button to set the current date and time.

5-3 Register the license



This section describes how to register the license for the optional functions. Touch [Initial Settings] on the menu bar in the setting change window, and then touch [License] in the sub menu to bring up the license registration screen.

Select the optional functions to be used by touching the [Selecting Optional Function] button, touch the [License number input button], and enter the license number. The optional functions will be added if the entered registration number matches the registered number when [Register the license] is touched.

If this fails, check that the license number is entered correctly, that the selection of the optional functions are made properly, and that the time/date settings on AG-150A is set correctly.

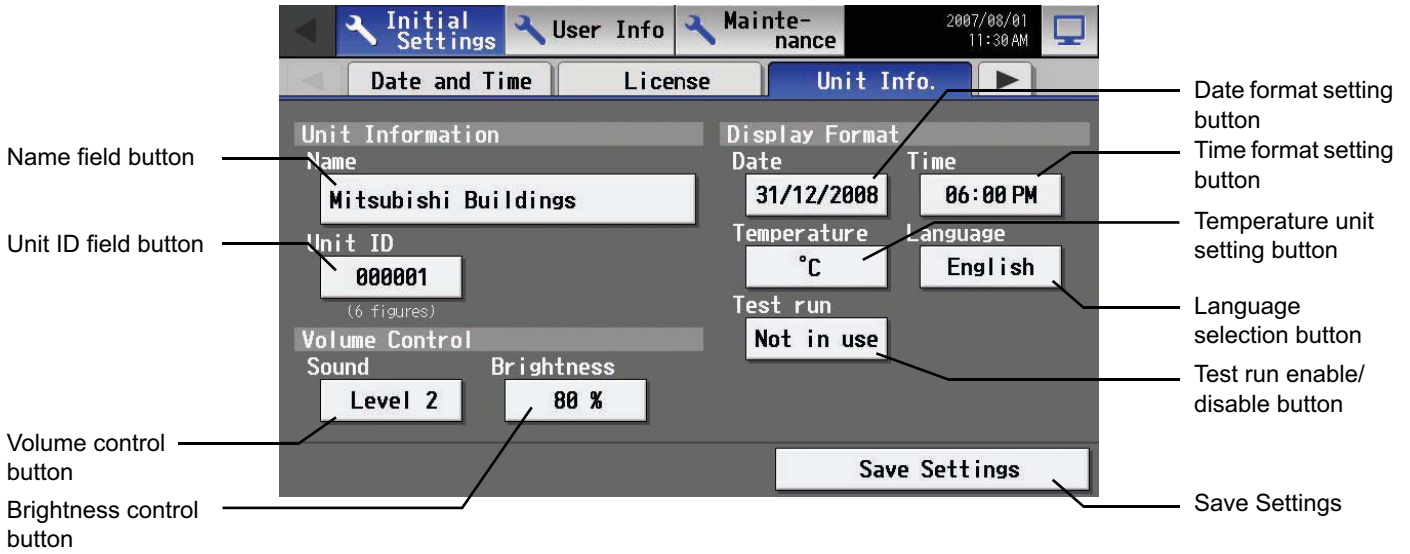
Consult your dealer for the availability of optional functions and for how to purchase the license for them.

Click the "Trial" button to register a one-day license that is valid for one day from the time the button is clicked. (Web Monitor License Only)

5-4 Setting the Basic Information

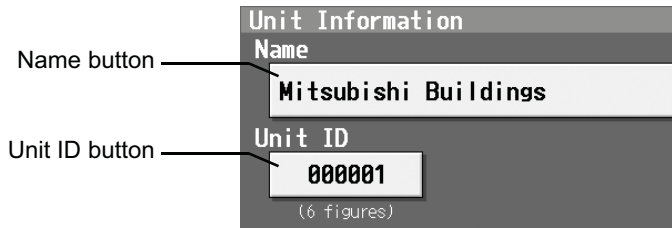
Touch the [Unit Info.] tab in the screen that appears when [Initial Settings] on the menu bar in the setting change window is touched to open the Unit Info setting window and make the basic settings for AG-150A such as its name and display options.

Note: If the user logs in as a building manager, the operations may be prohibited.



5-4-1 Unit Setting

Information about the unit is entered on the window below.



(1) Press the [Name] button and enter the name for AG-150A in 40 characters or less. The name set here is used on the display screen of the software that controls multiple AG-150A units and for the name of the sender in the body of error messages.

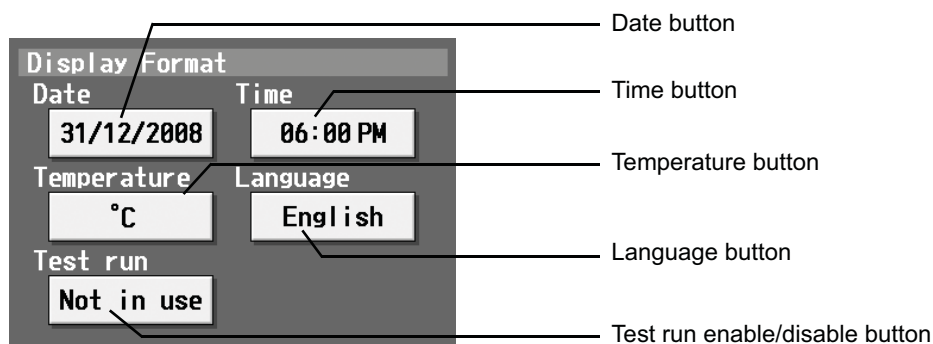
Note: The following characters cannot be used in the name: < > & " ' "

(2) Press the [Unit ID] button and enter the ID number for AG-150A in six numerical characters (single byte) or less. Use this setting when you want to control multiple AG-150A units with unit IDs. The unit ID that is entered here will be used on the display screen of the software that controls multiple AG-150A units and for the sender ID in the body of error messages.

(3) Press [Save settings] on the Unit Info window to save the settings.

5-4-2 Setting the Display Format

Data, time, temperature, and language are set on the window below.



- (1) Select the date format. Each touching of the button allows you to cycle through the following options: [31/12/yyyy][12/31/yyyy][yyyy/12/31]. Current year will appear in "yyyy." (e.g., December 31st, 2009 will appear as 31/12/2009.) The date will be displayed in the selected order on the screen or on the mail screen.
- (2) Set the time format. (24 hr [18:00] or 12 hr [06:00 PM]) Each touching of the button switches between [18:00] and [06:00 PM].
- (3) In the [Temperature] section, select between [°C] and [°F] as the unit of temperature. Each touching of the button switches between [°F] and [°C].
- (4) Press the language selection button to bring up the [Language selection screen], and the selected language will appear.



- (5) Enables/disables the test run function. Touching the button toggles between [Not in use] and [In use].
- (6) Press [Save setting] on the Unit info window to save the setting.

5-4-3 Adjusting the sound volume and screen brightness

Sound volume and screen brightness are adjusted on this window.



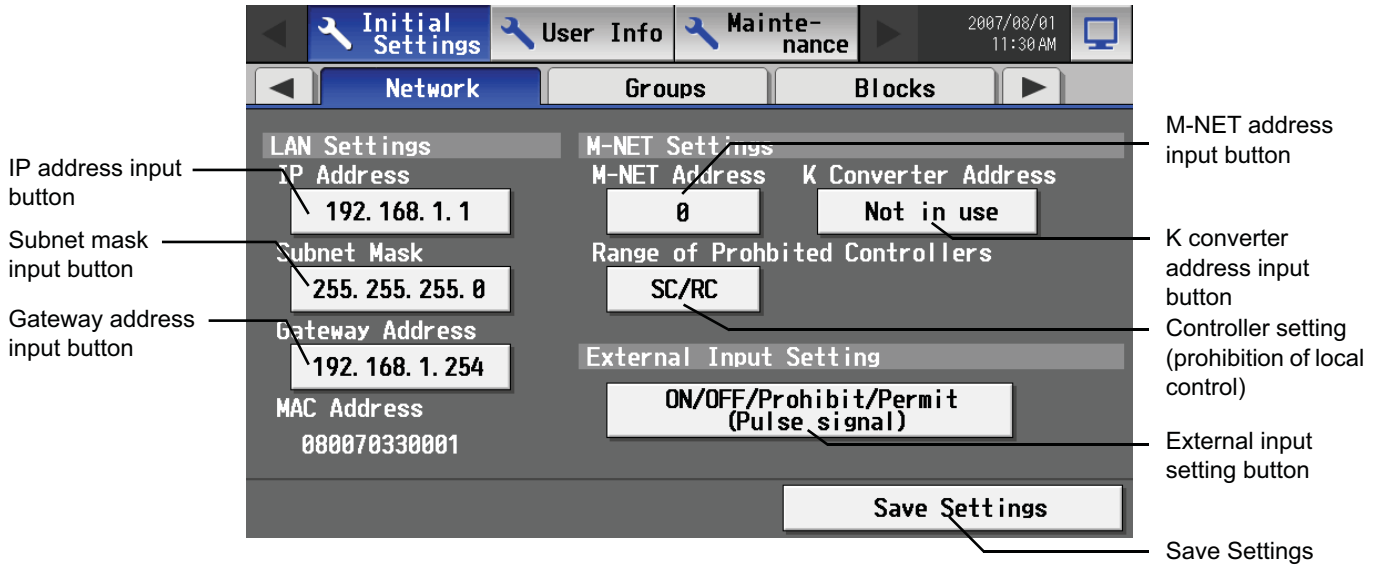
- (1) Each touching of the sound volume control button cycles through the following: [Level 0], [Level 1], [Level 2], and [Level 3]. Although the change made in sound volume is reflected right away, it will not be saved until the [Save setting] button is touched. Even if the setting is changed, if the user exits the window without touching the [Save setting] button, the volume setting will go back to the previous setting.
- (2) Each touching of the brightness control button cycles through the following: [70 %], [80 %], [90 %], and [100 %]. Although the change made in brightness is reflected right away, it will not be saved until the [Save setting] button is touched. Even if the setting is changed, if the user exits the window without touching the [Save setting] button, the brightness setting will go back to the previous setting.
- (3) Press [Save setting] on the Unit info window to save the setting.

5-5 Network Setting

Touch the [Network] tab in the screen that appears when [Initial Settings] on the menu bar in the setting change window is touched to open the network setting window and make the basic settings for LAN and M-NET.

Note: If the user logs in as a building manager, some of the operations may be prohibited.

Note: When changes are made to the settings, restart the AG-150A before going back to the main menu to reflect the those changes.



5-5-1 LAN setting

In Network Setting, set the AG-150A IP address, subnet mask and gateway address. If connecting to the AG-150A via a permanent LAN, consult with the network administrator before setting these addresses.

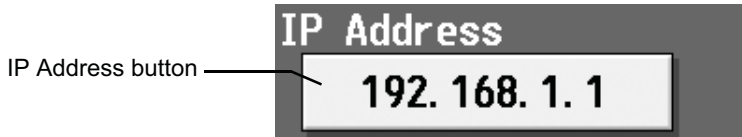
5-5-1-1 Settings for when the AG-150A is connected to a dedicated LAN

- (1) Set the IP address for AG-150A. Enter the IP address on the keyboard that appears when the IP address input button is touched. If the LAN wiring has been newly set up, allocate IP addresses to the AG-150A units in a sequential order starting with [192.168.1.1]. For example the first AG-150A unit will receive an IP address of [192.168.1.1], the second AG-150A unit will receive an IP address of [192.168.1.2] and so on.

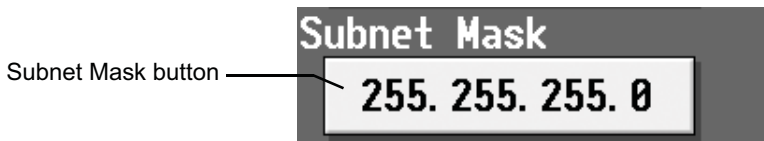
The Web Monitor PC that monitors and sets AG-150A will also require network addresses consistent with the rest of the LAN.

Note: When using a AG-150A dedicated LAN, it is recommended to set the IP address as follows.

AG-150A: Between [192.168.1.1] and [192.168.1.40] Web Monitor PC: Between [192.168.1.101] and [192.168.1.150]



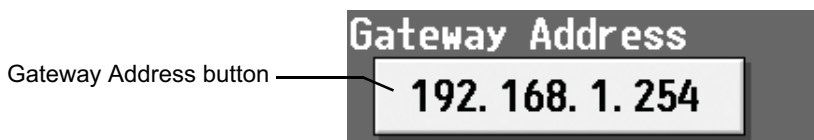
- (2) Set the subnet mask. Enter the subnet mask address for the AG-150A on the keyboard that appears when the subnet mask input button is touched. Normally, you should enter [255.255.255.0].



- (3) When monitoring remotely or sending error mail via a dial-up router, enter the router IP address in the [Gateway] field. Leave the gateway address blank when not connecting via a dial-up router.

Note: It is recommended to set the dial-up router IP address to [192.168.1.254]. Refer to the dial-up router instruction manual for details of how to set the IP address.

Note: It is necessary to connect a modem (analog type or ISDN type) between the dial-up router and telephone line when using a dial-up router that does not have a built-in modem.



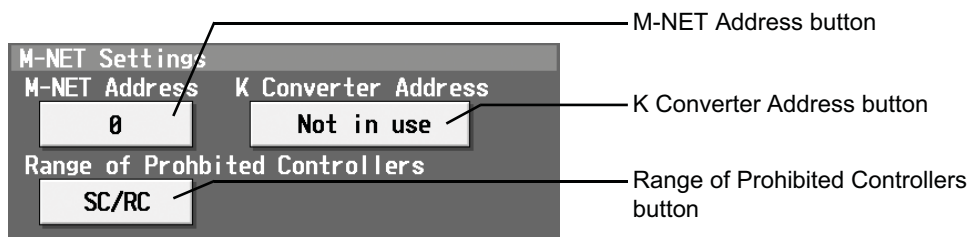
- (4) Press [Save setting] on the network window to save the setting.

5-5-1-2 Settings for when the AG-150A is connected to an existing LAN

When connecting the AG-150A to an existing LAN, consult with the network administrator who is responsible for the LAN before setting the IP address, subnet mask, or gateway address.

5-5-2 M-NET Setting

In M-NET Setting, set the AG-150A M-NET address, whether or not a K-Control unit is present and which machines send the prohibited controller command.



- (1) Enter the AG-150A M-NET address in the [M-NET Address] field. Normally you should enter [0].
- (2) When K-Control air conditioners are connected, enter the M-NET address of K transmission converter in the [K Converter Address] field.
- (3) If prohibited controller (prohibiting local operation) has been set, this setting determines the scope of this setting's control, i.e. operation is prohibited for both the remote control and subordinate system controllers, or just for the remote control. Click [SC/RC] when you want prohibited controllers to include both subordinate system controllers and the remote control, or touch [RC only] when you only want to prohibit operation on the remote control.
Note: Normally, you should select [SC/RC].
- (4) Press [Save setting] on the network window to save the setting.

5-5-3 External input Setting

The external input function allows for a batch operation (start/stop) of the air conditioning units that are connected to the AG-150A via the external input/output adaptor (PAC-YG10HA; sold separately), using contact and pulse signals.

Pressing the "External Input Setting" button toggles through the following options: Not in use, Emergency Stop (Level signal), ON/OFF (Level signal), and ON/OFF/Prohibit/Permit (Pulse signal).

* See Chapter 8 for detailed explanations on how to connect external devices.



5-6 Group Setting

Touch the [Groups] tab in the screen that appears when [Initial Settings] on the menu bar in the setting change window is touched to open the group setting window and set and register the group names for the air conditioning units or general equipment to be connected to AG-150A.

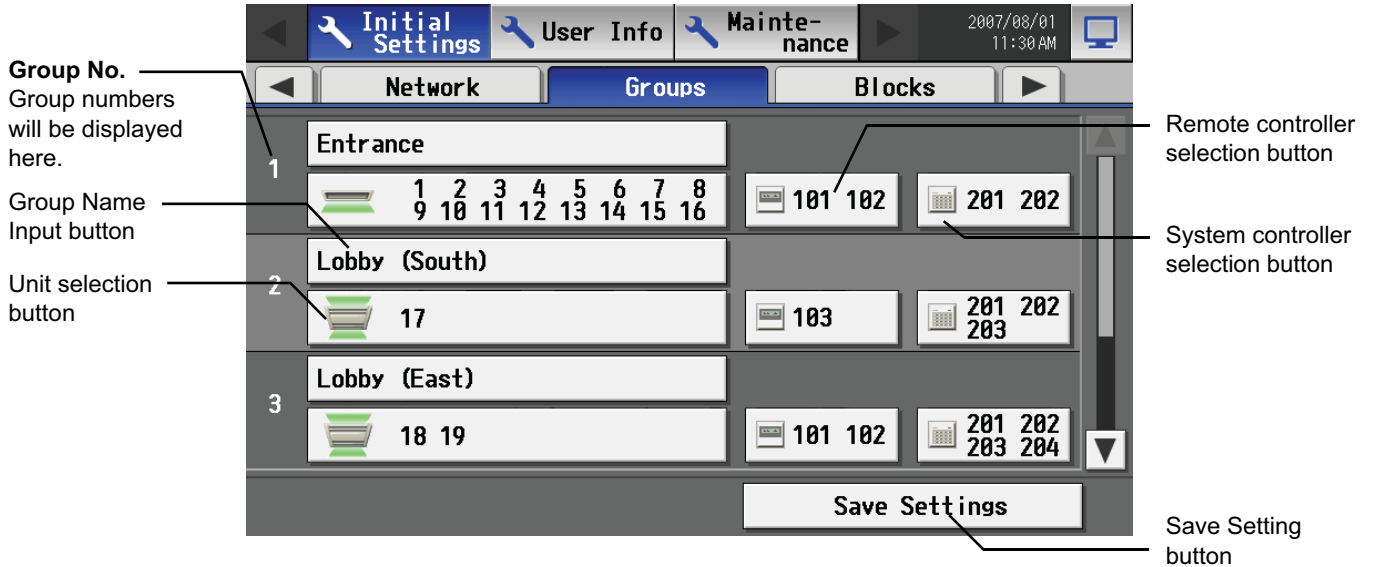
Note: If the user logs in as a building manager, some of the operations may be prohibited.

Note: If the system is connected to the TG-2000A, make all settings and changes from the TG-2000A so that the data in TG-2000A and AG-150A will match.

Note: A contact on the general interface device is regarded as one unit. The number of units that can be connected to AG-150A is up to 50.

Note: Air-conditioners and general equipment cannot be in the same group.

Note: Remote controllers or system controllers cannot be connected to general equipment.



5-6-1 Setting the Group Name

Press the Group name input button, and enter the group name on the keyboard that appears in 20 characters or less.

Note: The following characters cannot be used in the group name: < > & " ' "

5-6-2 Registering air conditioner units in the group

(1) To register air conditioning units, select the unit selection button of the group to which the air conditioning units will be assigned.

Touch the model selection button on the window that appears to display air conditioning units. Then touch the numbers that are assigned to the units to register. An orange frame will appear around the units that are selected.

Click again to deselect the selected item (no orange frame).

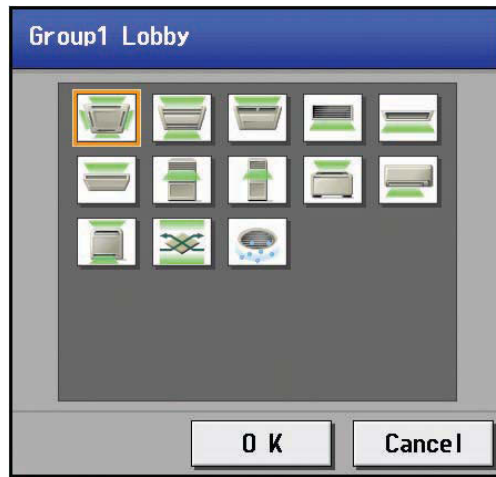
Press the [OK] button to save the changes, or touch the [Cancel] button to go back to the previous screen without saving any changes.

Note: A maximum of 16 air conditioner units can be registered in one group.

Note: To change the registered units to air-conditioners in the group in which general equipment is registered, disconnect the general equipment first.



(2) To change the icons, touch the icon selection button, and select the desired icon from the ones that appear.



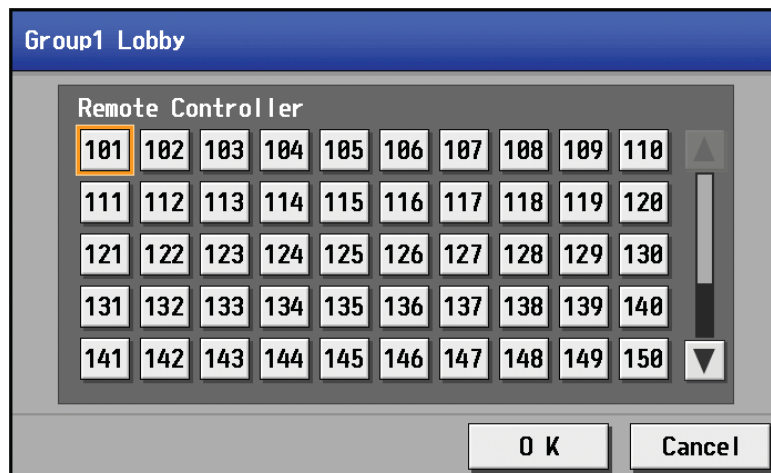
(3) To register a remote controller to a group, touch the remote controller selection button to bring up the remote controller selection window, and then touch the numbers that are assigned to the units to register. An orange frame will appear around the selected items. Click again to deselect the selected items. Click again to deselect the selected item (no orange frame). Press the [OK] button to save the changes, or touch the [Cancel] button to go back to the previous screen without saving any changes.

Note: A maximum of 2 remote controllers can be registered in one group.

Note: MA remote controllers do not need to be registered to a group.

* Only one remote controller can be connected to a system to which three system controllers are connected. No remote controllers can be connected to a system to which four system controllers are connected. (The maximum connectable number is four including system controllers.)

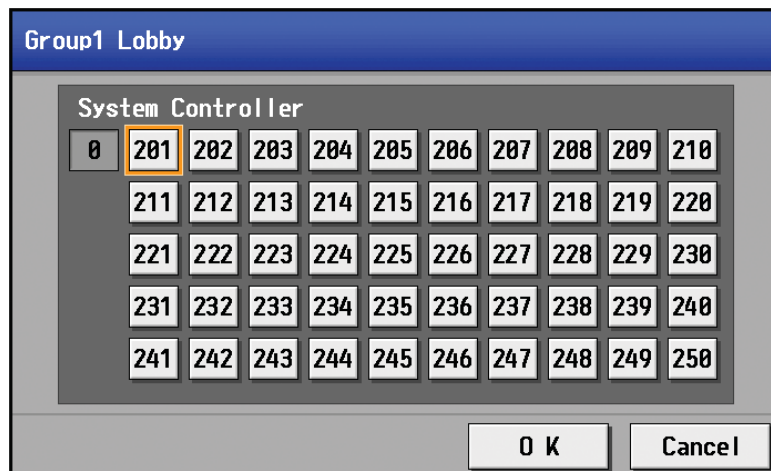
* The remote controllers that are registered to another group will be grayed out and not available for selection.



(4) To register a system controller to a group, touch the system controller selection button to bring up the system controller selection window, and then touch the numbers that are assigned to the unit to register. An orange frame will appear around the selected items. Click again to deselect the selected items. Click again to deselect the selected item (no orange frame). Press the [OK] button to save the changes, or touch the [Cancel] button to go back to the previous screen without saving any changes.

Note: The combined number of system controllers and remote controls cannot exceed four.

Note: K-transmission converters do not need to be registered.



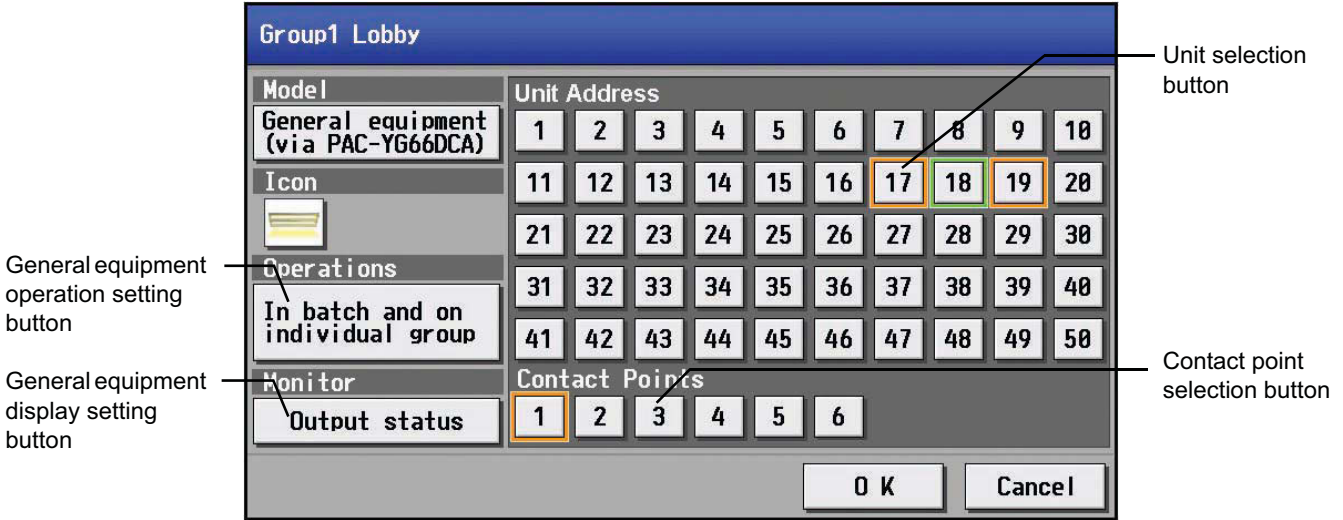
(5) Press [Save setting] on the group setting window to save the settings.

5-6-3 Registering general equipment in the group

(1) To register general equipment, touch the unit selection button of the group to set. Select [General equipment (via PAC-YG66DCA)] on the window that appears to bring up the general equipment registration window. Next, touch the unit number of the general interface (PAC-YG66DCA) that is connected to the general equipment to be registered. (A yellow green frame will appear around the selected items.) Select the contact number to which the general equipment is connected, and touch the number assigned to another unit to register the first selected item to the group (The yellow green frame will change to an orange frame.) The item with a yellow green frame is the currently selected unit, and the ones with an orange frame are the units that are already registered to a group. To cancel the connection, select the unit number and touch the selected contact number to deselect it (no orange frame). Press the [OK] button to save the changes, or touch the [Cancel] button to go back to the previous screen without saving any changes.

Note: A maximum of 16 general equipment can be registered in one group.

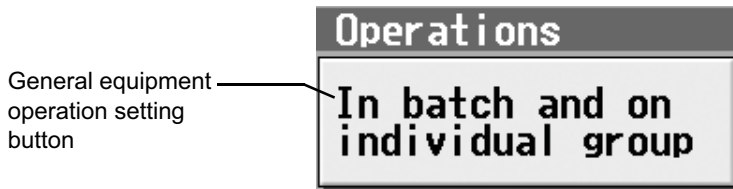
Note: To change the registered units to general equipment in the group in which air-conditioners are registered, disconnect the air-conditioners first.



(2) To change the icons, touch the icon selection button, and select the desired icon from the ones that appear.



(3) In the [Allow Operation] section, select whether to enable or disable the ON/OFF operation on the Web browser or on the TG-2000A operation screen. Select [In batch and on individual group] to enable only when the collective operation is performed. Select [On individual group] to enable in each group. Select [No operation (Monitor only)] to disable.



(4) In the [Monitor] section, select whether to display I/P to or from the general equipment on the monitor screen.



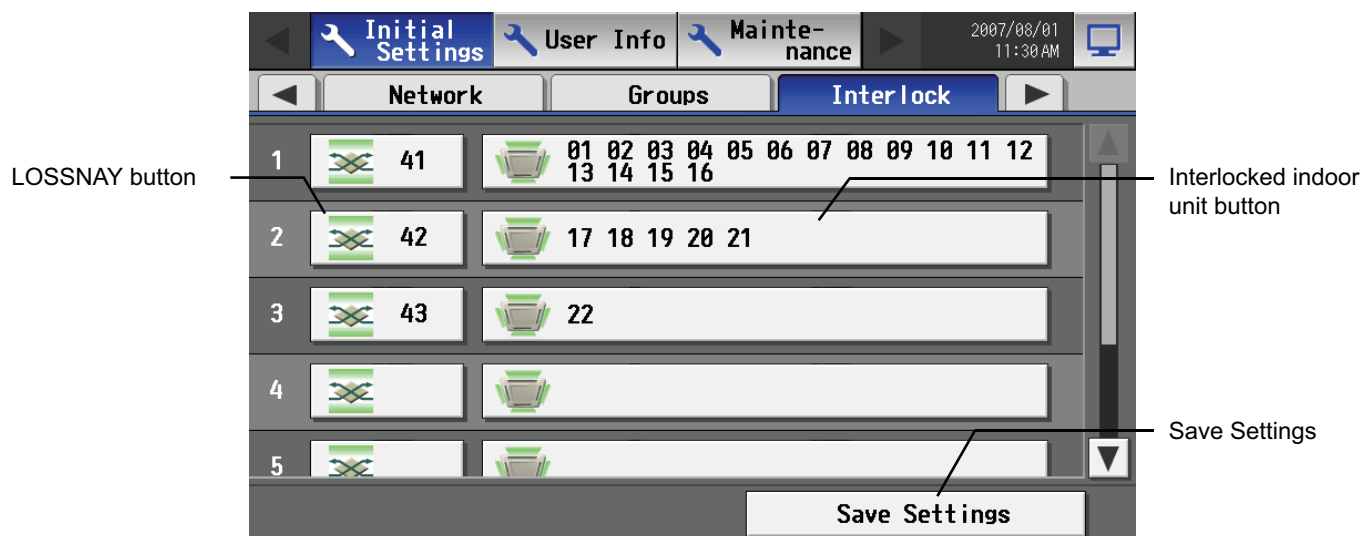
(5) Press the [Save setting] on the group setting window to save the settings.

5-7 Interlocked Setting

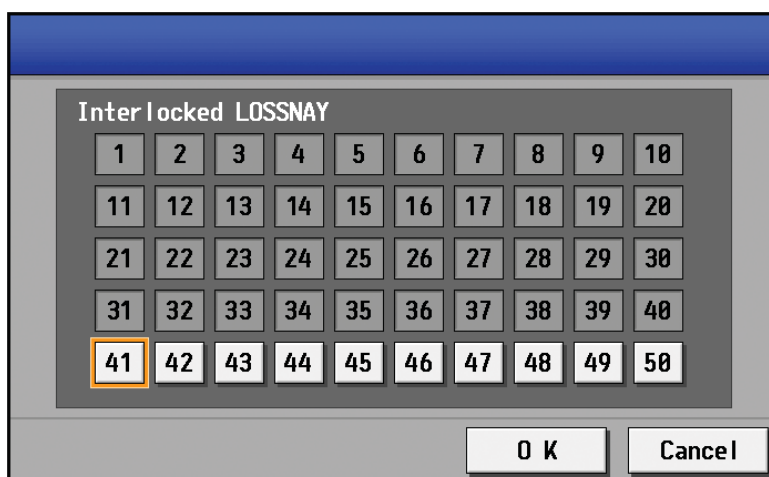
To interlock the ON/OFF operation of LOSSNAY and indoor units, touch [Interlock] on the window that appears when [Initial Settings] on the menu bar in the setting change window is touched, and make the interlock settings.

Note: If the user logs in as a building manager, the operations may be prohibited.

Note: If the system is connected to the TG-2000A, make all settings and changes from the TG-2000A so that the data in TG-2000A and AG-150A will match.

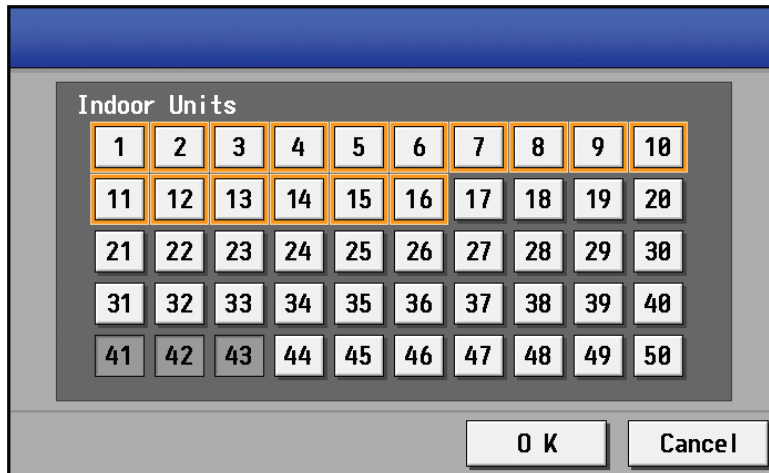


- (1) To make the interlock setting for a LOSSNAY, first, touch the LOSSNAY button to bring up the LOSSNAY selection window. Touch the number assigned to the unit to be registered to select it. An orange frame will appear around the selected items. Click again to deselect the selected items. Click again to deselect the selected item (no orange frame). Press the [OK] button to save the changes, or touch the [Cancel] button to go back to the previous screen without saving any changes.



- (2) Touch the Interlocked indoor unit button to bring up the interlocked indoor unit selection window, and touch the number assigned to the unit to register. An orange frame will appear around the selected items. Click again to deselect the selected items. Click again to deselect the selected item (no orange frame). Press the [OK] button to save the changes, or touch the [Cancel] button to go back to the previous screen without saving any changes.

Note: A maximum of 16 indoor units can be registered to operate with one ventilator.



- (3) Press the [Save setting] on the LOSSNAY interlock setting window to save the settings.

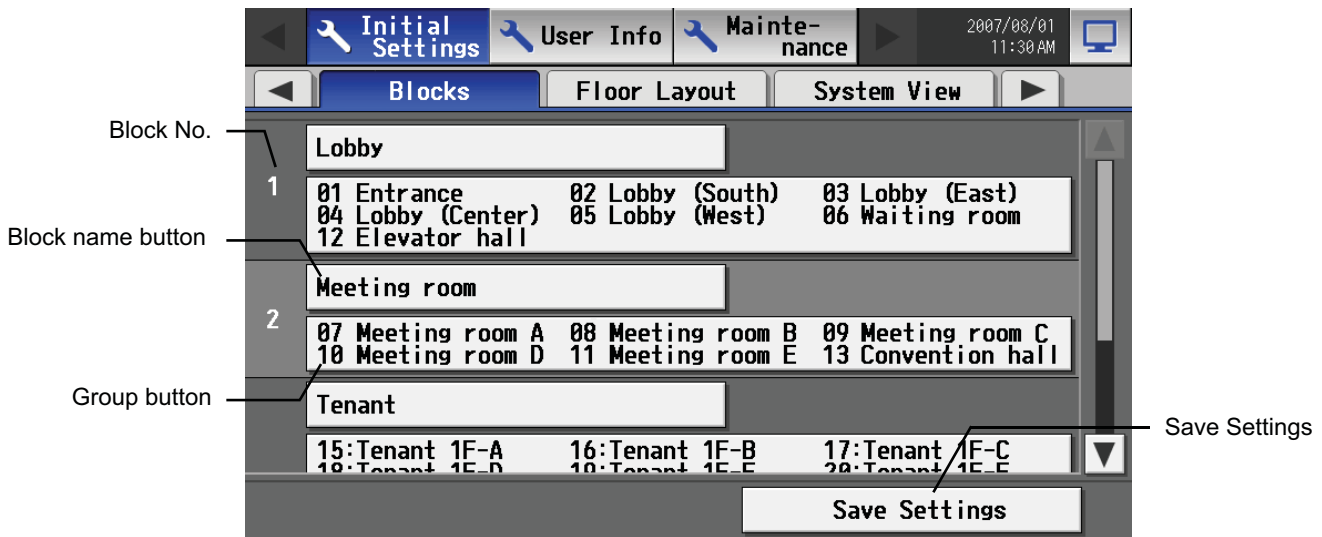
5-8 Block Setting

To perform a batch monitoring/control of multiple air conditioning unit groups, the groups need to be registered to a block. Touch [Blocks] on the window that appears when [Initial Settings] on the menu bar in the setting change window to register groups to a block.

* Although not shown on the LCD, blocks are used as a unit of control for energy-saving and peak-cut control.

Note: If the user logs in as a building manager, some of the operations may be prohibited.

Note: If the system is connected to the TG-2000A, make all settings and changes from the TG-2000A so that the data in TG-2000A and AG-150A will match.



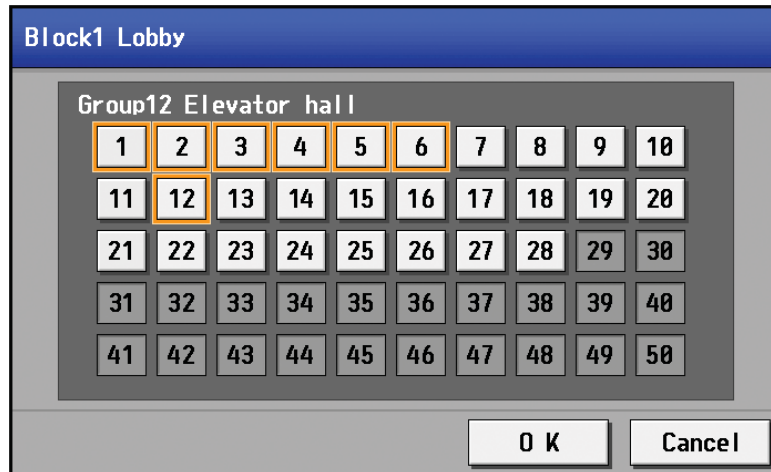
5-8-1 Setting a block name

Touch the block name button, and enter the block name on the keyboard that appears in 20 characters or less. Press [Save setting] on the block setting window to save the settings.

Note: The following characters cannot be used in the group name: < > & " '

5-8-2 Registering a group in a block

Click on the number of the group to register on the group selection window that appears when the group button is touched. An orange frame will appear around the selected item. (The name of the group that was touched last will appear.) Touch the selected item again to deselect it (no orange frame).

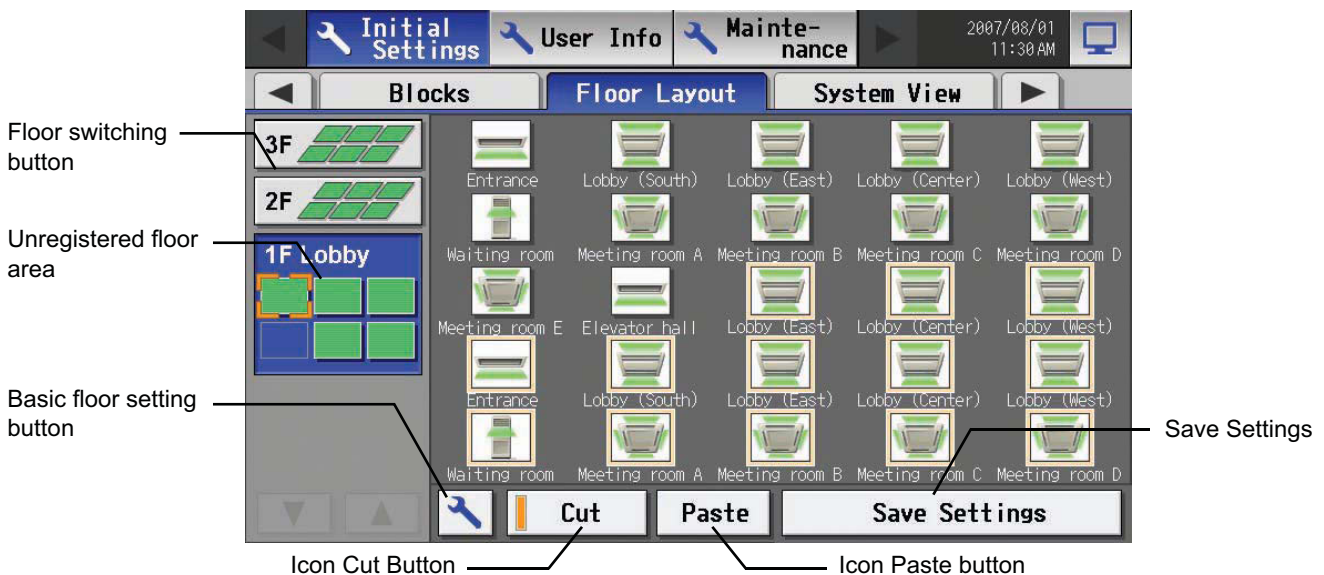


Press [Save setting] on the block setting window to save the settings.

5-9 Floor Layout Setting

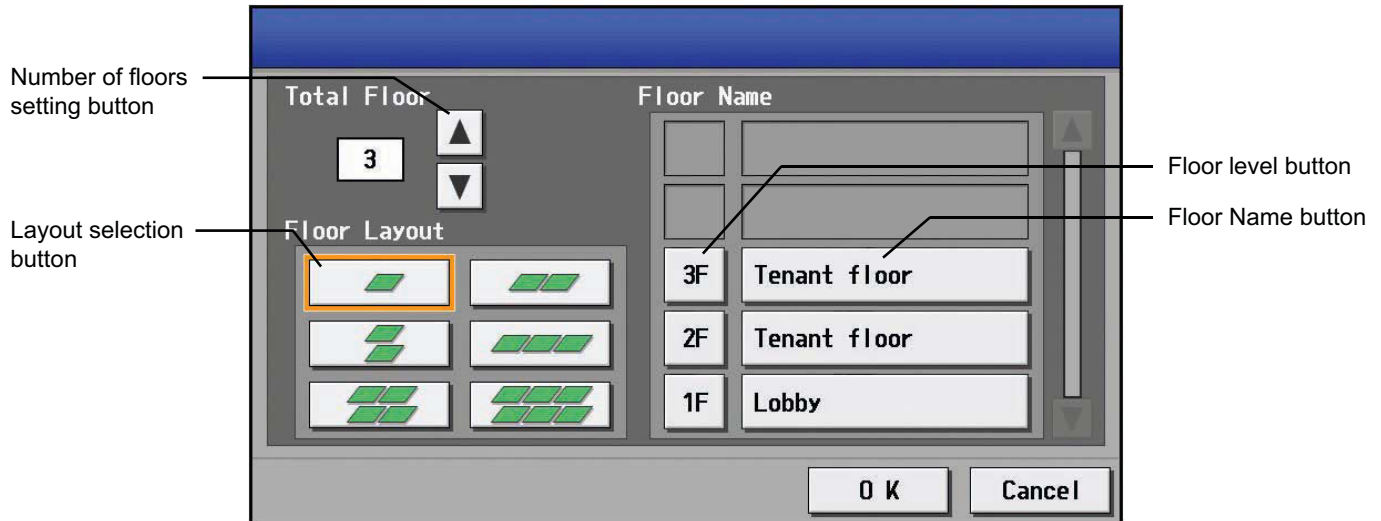
To change the floor layout on the main operation screen or to change the display position of the groups on the floor, touch the [Floor layout] tab in the setting change window.

Note: If the user logs in as a building manager, some of the operations may be prohibited.

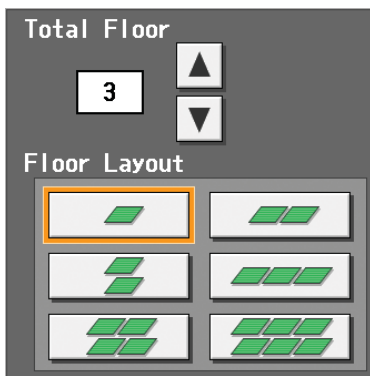


5-9-1 Making the floor settings

Touch the basic floor setting button to bring up the basic floor setting window.



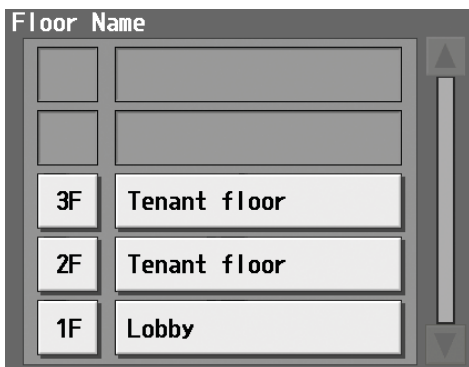
(1) Changing the floor layout display



Select the total number of floors on the basic floor setting window with the up/down arrow buttons, and select the desired type of floor layout. Not all types of floor layouts may not be available, depending on the number of floors.

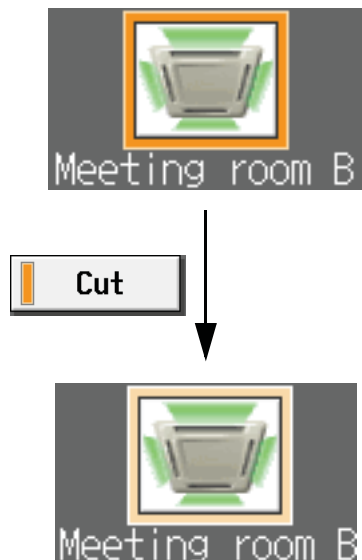
- * No. of floors = 0: No layouts are selectable. (allocated in the unregistered floor area)
- * No. of floors = 1: [2 row×1 column][1×2][3×1][2×2][3×2]
- * No. of floors = 2-3: [1 row×1 column][2×1][1×2][3×1][2×2][3×2]
- * No. of floors = 4-5: [1 row×1 column][2×1][1×2][3×1][2×2] are selectable.
- * No. of floors = 6-8: [1 row×1 column][2×1][1×2] are selectable
- * No. of floors = 9-10: [1 row×1 column] are selectable
- * When a floor is deleted, the icons on the floor will be moved to the bottom floor. If part of the floor is deleted, the icons on the deleted area will be moved to the floor located at the top left of the original floor.
- * The default layout consists of two rows and one column.

(2) Changing the floor level name or floor name



Press the floor name button on the basic floor setting window, and enter the floor name in three characters or less. Press the floor name button and enter the floor name in 20 characters or less.

5-9-2 Changing the display position of the groups



To move a group to another floor, first, select the group to be moved on the floor layout setting window. (An orange window will appear around the selected item.)

* Groups that have been registered but not assigned a position will be placed in the left top area of the bottom floor in the order of the group number. (If the number of these groups exceeds the maximum number of displayable groups, they will be placed on the floor next to the floor on its right.)

Next, touch the [Cut] button (A pale orange frame will appear around the selected item.), select the floor to move the icon to, and touch [Paste] button. The selected group to be moved will be moved to the floor to move to.

To cancel, touch the paste button on the same floor as where the cut button was touched. (The orange frame will disappear.) Press [Save setting] to save the changes.

* If you try to exit the window without saving the changes by touching the menu bar or the tabs, a popup window will appear, alerting you that the changes have not been saved. If you exit the window without saving the changes, these changes will not be reflected.

5-10 Checking the refrigerant systems

To see the list of refrigerant systems connected to AG-150A (connection information of outdoor and indoor units), touch [System view] on the window that appears when [Initial Settings] on the setting change window is touched and bring up the refrigerant system display window.

Outdoor Unit (Sub unit)	Indoor Unit
51 (52)	01 02 03 04 05 06 07 08 09 10 11 12 13 14 15 16 17 18 19 20 21 22 23 24 25 26 27 28 29 30
81 (82)	31 32 33 34 35
86 (87 88 89 90 91)	36 37 38 39 40 41
92 (93)	42 43
94 (95)	44 45

Item	Description
Outdoor Unit	The numbers assigned to the outdoor units. (The numbers in the parentheses indicate the unit number of the connected sub units.)
Indoor Unit	The numbers assigned to the indoor units that are connected to the outdoor unit on the same row.

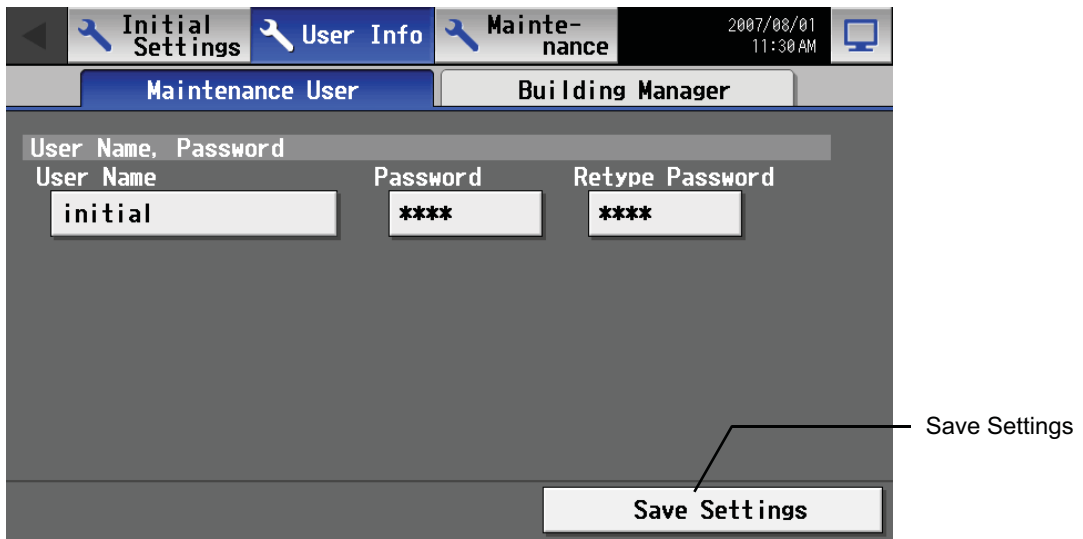
6. User Setting

Touch [User Info] on the menu bar in the setting change window to jump to the user setting window.

6-1 Setting the Maintenance User

To change the Maintenance User name and/or password, touch [Maintenance User] on the window that appears when [User Info] is touched on the setting change window.

* This window cannot be accessed when logged in as the Maintenance User.



(1) Changing the maintenance user name

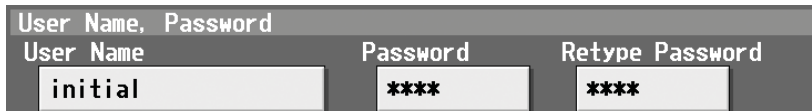
To change the maintenance user name, touch the user name input button, and enter the user name on the keyboard that appears in 20 characters or less.

(2) Changing the password

To change the maintenance user password, touch the password input button, and enter the password that is between 3 and 10 character long on the keyboard that appears. Press Retype Password, and enter the same password again.

* On the screen, password will appear as asterisks with each * representing a character.

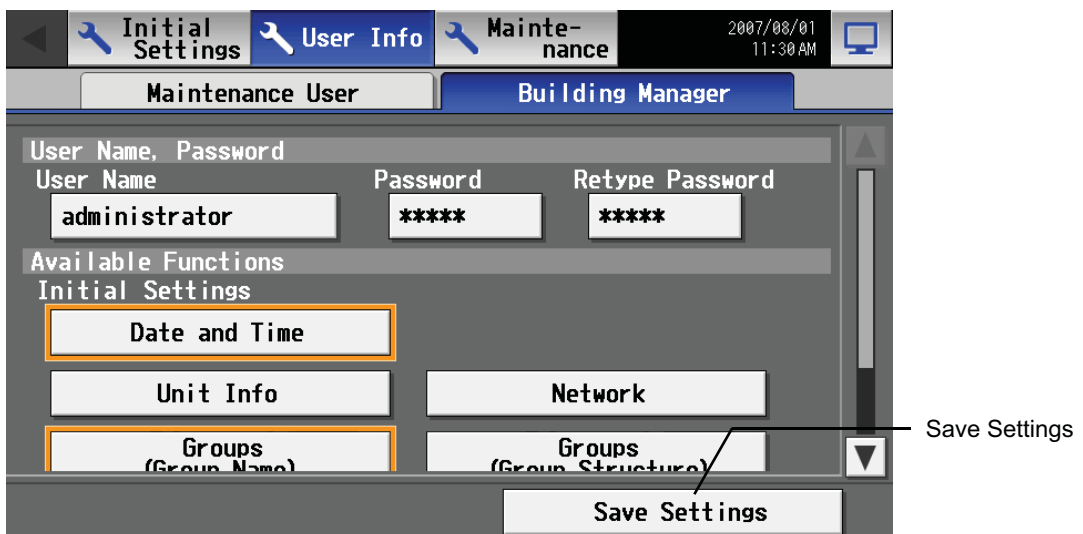
Press the [Save setting] button to reflect the new user name and password.



6-2 Setting the Building Manager

To change the Building Manager name and/or password, or enable/disable functions, touch [Building Manager User] on the window that appears when [User Info] is touched on the setting change window.

Note: If the user logs in as a building manager, the present status can be checked, but cannot be changed.



(1) Changing the building manager name

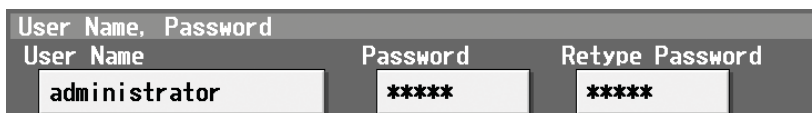
To change the building manager name, touch the user name input button, and enter the user name on the keyboard that appears in 20 characters or less.

(2) Changing the password

To change the building manager password, touch the password input button, and enter the password that is between 3 and 10 character long on the keyboard that appears. Press Retype Password, and enter the same password again.

* On the screen, password will appear as asterisks with each * representing a character.

Press the [Save setting] button to reflect the new user name and password.

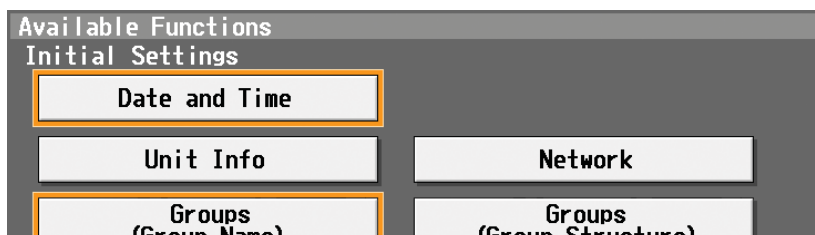


User Name, Password

User Name	Password	Retype Password
administrator	*****	*****

(3) Making the settings for available functions

Touch the function to enable the function (An orange frame will appear around the selected item), or touch the selected item again to deselect it (no orange frame). Press the [Save setting] button to save the changes.



Available Functions

Initial Settings

Date and Time	
Unit Info	Network
Groups (Group Name)	Groups (Group Structure)

Table Available Function List

Function		Content	
Initial setting	Date and time	Current date and time setting	
	Basic system ^{*1}	AG-150A network setting, external output setting	
	Groups	Group name	Group name setting
		Group structure ^{*1}	Connection setting of indoor units, remote controllers, system controllers and general equipment in a group
	Interlocked LOSSNAY ^{*1}	Connection setting of interlocked LOSSNAY	
	Blocks	Block name	Block name setting
		Block structure ^{*1}	Registration setting of groups in a block
	Floor Layout	Floor name	Floor name setting
Floor configuration		Floor configuration setting	

*1: At factory shipment, the operation of the building manager is prohibited.

7. Maintenance screen

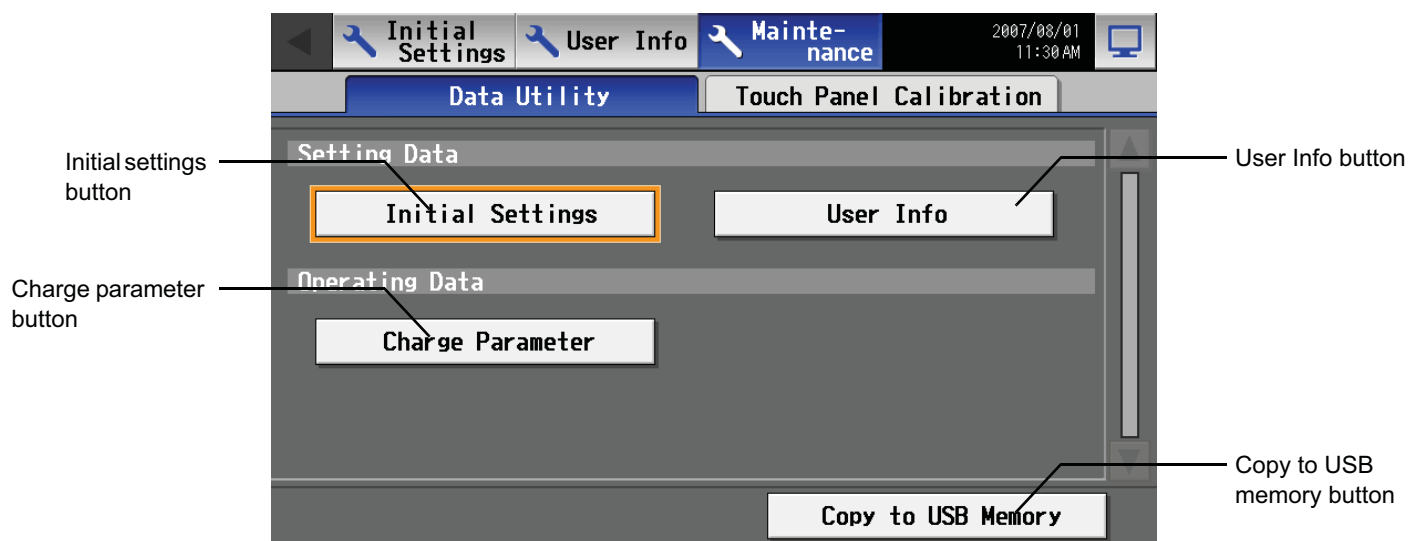
7-1 Copying the data to a USB drive

Note: Use the following types of USB memory.

a: Manufacturer : Sandisk Model : SDCZ6-2048-J65RB Memory Size: 2G

b: Manufacturer : Kingston Model : DT400/2GBFE Memory Size: 2G

To copy the data to a USB drive, plug the USB into a USB port, and touch [Data Utility] in the screen that appears when [Maintenance] on the setting change screen is touched.

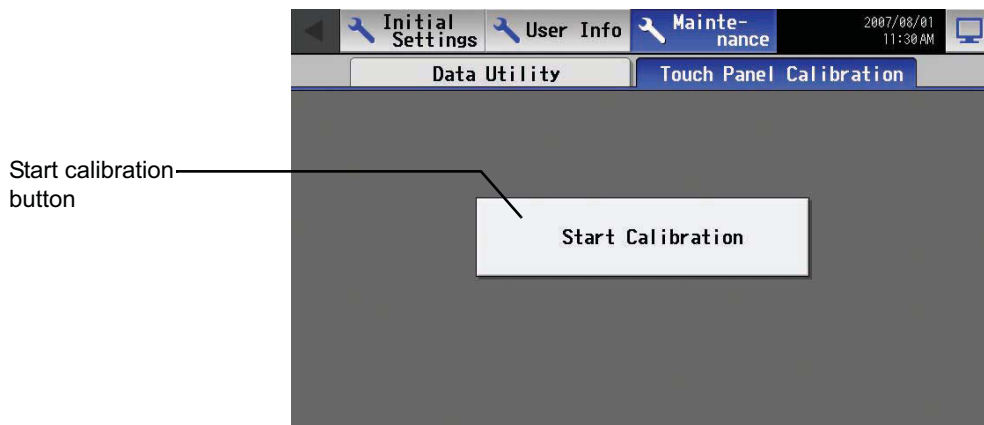


Item		Description
Setting data	Initial settings	Touch the button to select, and touch again to deselect. With the button selected, touch the [Copy to USB Memory] button to copy all settings data (except the AG-150A user information), to the \[Serial Number]\[SettingData] folder in the root folder of the USB memory. If the folder does not already exist, one will be created. * The type of settings that cannot be set on the LCD screen, such as the energy-save setting data, will also be copied.
	User Info	Touch the button to select, and touch again to deselect. With the button selected, touch the [Copy to USB Memory] button to copy the AG-150A user information to the \[Serial Number]\[Settings] folder in the root folder of the USB memory. If the folder does not already exist, one will be created. * Only the maintenance users have the copy privilege.
Operating data	Charge parameter	Touch the button to select, and touch again to deselect. With the button selected, touch the [Copy to USB Memory] button to copy the charge parameter data to the \[Serial Number]\[SettingData] folder in the root folder of the USB memory in the CSV format. If the folder does not already exist, one will be created.
Copy to USB memory		With the Setting Data, User Info, or Charge Parameter button selected, touch this button to copy the selected settings to the USB memory.

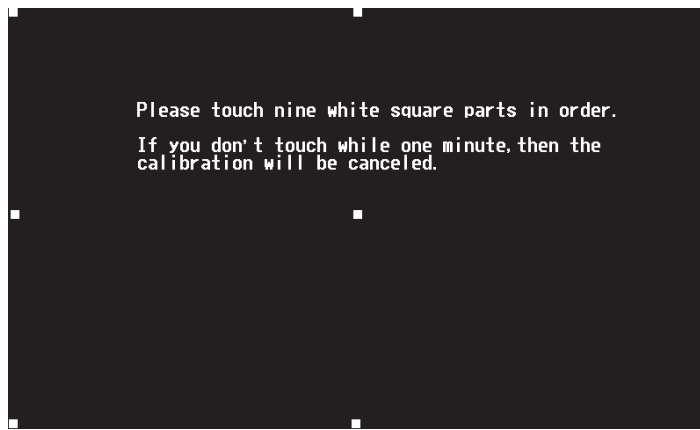
7-2 Adjusting the touch panel

To adjust the touch panel, touch [Maintenance] on the setting change screen and then [Touch Panel Calibration] to bring up the Touch Panel Calibration screen.

Note: The use of any commercially available touch pen is recommended.



The touch panel calibration screen will appear when the [Start Calibration] button is touched.



A white "5 dots × 5 dots" square will appear in the screen in the following order: left top, center top, right top, left middle, center, right middle, left bottom, center bottom, and right bottom. Every time the square is touched, the next square will appear. When all nine squares are touched, calibration is complete, and the display will return to the touch panel calibration screen. If the screen is left untouched for one minute, the display will automatically return to the calibration screen, and this step needs to be started over.

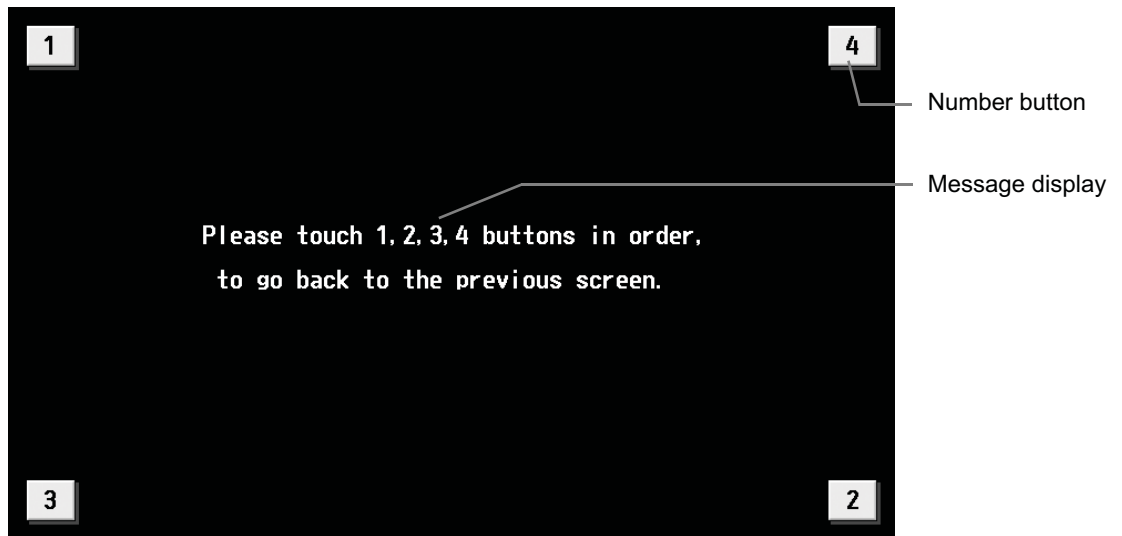
* The screen may not be calibrated properly if touched with a finger. Use a pointy but not sharp object to touch the screen.

* A sharp object may damage or scratch the screen.

8. Cleaning the touch panel

To clean the touch panel surface, first touch the [Setting Change Button] on the main operation screen and bring up the login screen, then touch the Clean touch panel button to bring up the screen below. Clean the touch panel with this screen being displayed.

* Please use dry cloth or soft cloth with neutral detergent (after wring dry) or one with Ethanol when cleaning. Do not use any organic solvent acid or alkali solution.



Item	Description
Number	Pressing the buttons 1 through 4 in the ascending order will take the screen back to the original screen (main operation screen). To go back to the previous screen, these buttons must be touched in the correct order starting with button 1. Touching the buttons in the wrong order will cancel all previous touching of buttons.
Message	"Please touch the 1, 2, 3, 4, buttons in order, to go back to the previous screen." will be displayed.

9. External input/output function

- External signal input requires the external I/O adapter (Model: PAC-YG10HA-E) sold separately.
- Refer to Instalation Manual for detail.

9-1 External input function

(1) The function of external input

Touch [Initial Settings] on the menu bar in the setting change window, then [Network setting] to bring up the network settings window. Touch [External Input Setting], and make the settings.

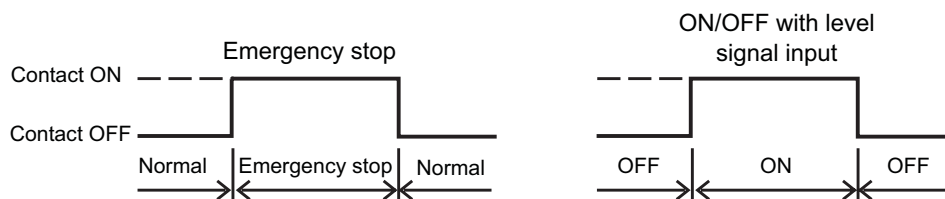


- The type of external input function can be selected by making certain settings.

No.	Function of external input signal	Remarks
1	External input signal not used	-
2	Perform emergency stop with level signal	During emergency stop, only ON/OFF of the centralized controller and local remote controller's operation will be prohibit.
3	Perform ON/OFF operation with level signal	Only the ON/OFF operation of the centralized controller and the local remote controller will be prohibit.
4	Perform ON/OFF operation, prohibit/permit operation with pulse signal	Set the pulse width while the contact is ON between 0.5 and 1.0 second.

(2) Input signal

① Level signal



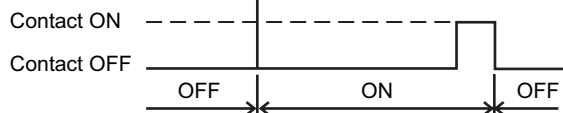
② Pulse signal

(Example) ON/OFF

- Signal 1 (ON)



- Signal 2 (OFF)



- * Set the pulse width to a value between 0.5 and 1.0 second.
- * Applicable also to the input signal that prohibits/permits operation.

(3) Specification of external input interface

CN5	Lead wire	Emergency stop/normal level signal	ON/OFF level signal	ON/OFF, prohibit/permit pulse signal
No.5	Orange	Emergency stop/normal input	ON/OFF input	ON input
No.6	Yellow	Not used	Not used	OFF input
No.7	Blue	Not used	Not used	Local remote controller prohibit input
No.8	Gray	Not used	Not used	Local remote controller permit input
No.9	Red	External DC source "+12VDC" or "+24VDC"		

- Notes**
- Using level signals
 - While the Emergency stop contact is ON, operation from both the controller and local remote controller (ON/OFF only) is prohibited. After the emergency stop is cancelled, air conditioning units will remain stopped, and they will require manual operation if they need to be started back up.
 - When level signals are used for ON/OFF, operation from both the controller and local remote controller (ON/OFF only) is prohibited at all times.
 - Using pulse signals
 - If the operation signal is received during operation, air conditioning units will remain in operation. (The same is applicable to OFF/Prohibit/Permit.)
 - When pulse signals are used, change of ON/OFF, operation mode, temperature setting, filter sign reset settings will be prohibited from the remote controller.

9-2 External output function

(1) The function of external output

- The “ON” signal is output when one or more air conditioner are in the ON operation.
- The “Malfunction” signal is output when one or more air conditioner malfunctions.

(2) Specification of external output interface

CN5	Lead wire	Description of each terminal
No.1	Green	Common (External ground)
No.2	Black	ON/OFF
No.3	Brown	Malfunction/Normal

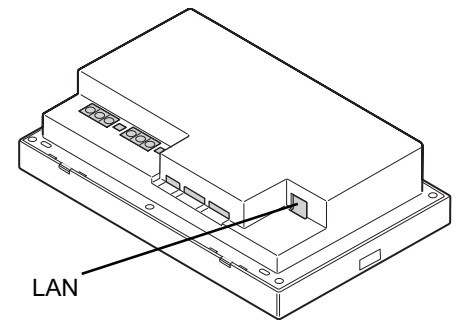
9-3 LAN connection function

When using the LAN connection function, connect the LAN cable to the LAN connector of this device.

- * Procure the LAN cable at the site, and use 100 BASE-TX Straight cable.
- * For a description of the IP address setting method, refer to section 5 Initial Settings.
- * LAN is 100 BASE-TX Specification.

⚠ CAUTION

Use a security device such as a router when connecting to the Internet.



10. Specifications

Item	Specification	
	Power supply	M-NET Terminal
	Controller drive	24VDC
	* PAC-SC51KUA supplies the power.	
Temperature	Operating	0 ~ 40°C [32~104°F]
	Non operating	-20 ~ 60°C [-4~140°F]
Humidity	30 ~ 90 %RH (No condensation)	
Weight	2.1kg [4.6 lb]	
Dimensions (W × H × D)	300 × 185 × 70.3 [25.6] mm 11-13/16 × 7-5/16 × 2-13/16 [1-1/16] in * []: indicate the thickness from the wall.	

This product is designed and intended for use in the residential, commercial and light-industrial environment.

This product at hand is based on the following EU regulations:

- Low Voltage Directive 2006/95/EC
- Electromagnetic Compatibility Directive 2004/108/EC

NOTE:

This equipment has been tested and found to comply with the limits for a Class B digital device, pursuant to Part 15 of the FCC Rules. These limits are designed to provide reasonable protection against harmful interference in a residential installation. This equipment generates, uses and can radiate radio frequency energy and, if not installed and used in accordance with the instructions, may cause harmful interference to radio communications. However, there is no guarantee that interference will not occur in a particular installation.

If this equipment does cause harmful interference to radio or television reception, which can be determined by turning the equipment off and on, the user is encouraged to try to correct the interference by one or more of the following measures:

- Reorient or relocate the receiving antenna.
- Increase the separation between the equipment and receiver.
- Connect the equipment into an outlet on a circuit different from that to which the receiver is connected.
- Consult the dealer or an experienced radio/TV technician for help.