



Air Conditioning Control System
Centralized Controller
AE-200A/AE-50A/EW-50A
AE-200E/AE-50E/EW-50E



Instruction Book
—Web Browser for User—

Contents

1. Introduction	2
1-1. Terms Used in This Manual	2
1-2. PC Requirements	2
2. Setting the Operating Environment.....	3
2-1. Setting the IP Address of the PC	3
2-2. Setting the Web Browser	5
2-3. Java settings.....	8
3. Logging in to the Web Browser for User	10
4. Monitor/Operation	13
4-1. Condition List.....	13

1. Introduction

This Instruction Book explains how to monitor and operate the units connected to the AE-200A/AE-50A/EW-50A and AE-200E/AE-50E/EW-50E using a Web browser.

1-1. Terms Used in This Manual

- “Centralized Controller AE-200A/AE-200E” is referred to as “AE-200.”
- “Centralized Controller AE-50A/AE-50E” is referred to as “AE-50.”
- “Centralized Controller EW-50A/EW-50E” is referred to as “EW-50.”
- “Booster unit” and “Water HEX unit” are referred to as “Air To Water (PWFY) unit.”
- “Hot Water Heat Pump unit” is referred to as “HWHP (CAHV, CRHV) unit.”
- Screen images used in this manual are from Windows 7® and Internet Explorer 9.0.

Note: Windows is a registered trademark or trademark of Microsoft Corporation in the United States and other countries.

1-2. PC Requirements

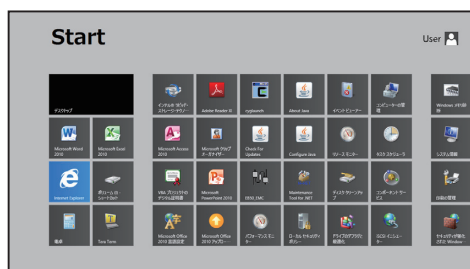
Table1-1 PC Requirements

Item	Requirement
CPU	1 GHz or faster
Memory	512 MB or more
Screen resolution	1366 x 768 or higher recommended
Browser	Microsoft® Internet Explorer 8.0 Microsoft® Internet Explorer 9.0 Microsoft® Internet Explorer 10.0 Microsoft® Internet Explorer 11.0 * Java execution environment is required. (Verified to run on Oracle® Java Plug-in Ver. 1.8.0_25) * Install Oracle® Java Plug-in that is appropriate for your operating system. When using a 64-bit OS, install a 32-bit and a 64-bit Java Plug-in. * The version of the Oracle® Java Plug-in can be verified by clicking [Java] in the Control Panel.
On-board LAN port or LAN card	100 BASE-TX
Pointing device	e.g., mouse

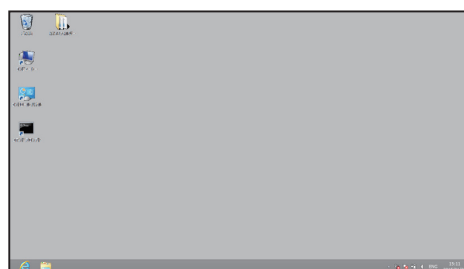
Note: Microsoft is a registered trademark or trademark of Microsoft Corporation in the United States and/or other countries.

Oracle and Java are trademarks or registered trademarks of Oracle Inc. in the United States and/or other countries.

Note: Although no particular OS is required, the Web browser will not properly operate when it is started up from the Internet Explorer on the Windows 8.1 start screen. If the Web browser was started up on the start screen, close the Web browser and switch the screen to the desktop screen, and then start up the Web browser again. Refer to the help functions of Windows 8.1 for how to switch the screens.



Start screen



Desktop screen

2. Setting the Operating Environment

This chapter explains how to make PC settings and Web browser settings to monitor and operate the air conditioning units.

2-1. Setting the IP Address of the PC

Follow the instructions below to set the PC's IP address for the Web browser to recognize the AE-200/AE-50/EW-50 unit.

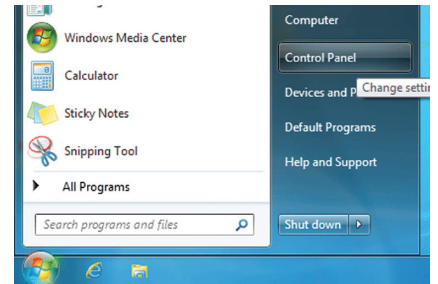
The PC's IP address must have the same network address as the AE-200/AE-50/EW-50's IP address.

(i.e., AE-200's IP address: [192.168.1.1], PC's IP address: [192.168.1.101])

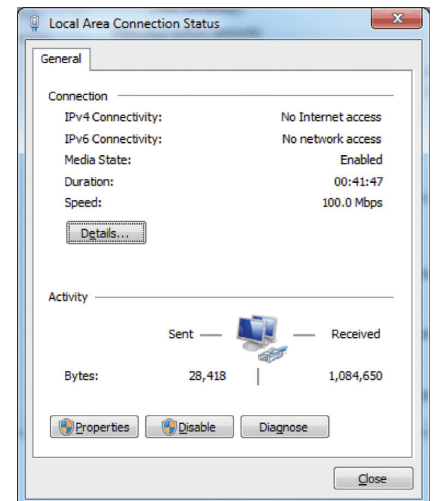
When connecting an AE-200/AE-50/EW-50 to an existing LAN, consult the system administrator to decide the IP addresses.

Note: When using an AE-200/AE-50/EW-50-dedicated LAN, it is recommended that the AE-200 unit and the EW-50 unit (only when used alone) be assigned an IP address between the range [192.168.1.1] and [192.168.1.40], the AE-50/EW-50 unit be assigned an IP address between the range [192.168.1.211] and [192.168.1.249], and that the PC connected to the AE-200/AE-50/EW-50 be assigned an IP address between the range [192.168.1.101] and [192.168.1.150].

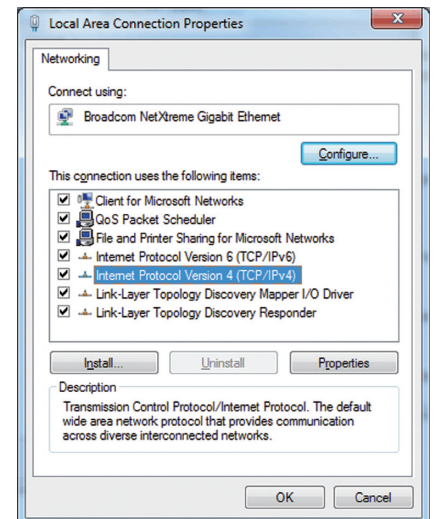
(1) Click [Control Panel] in the Start menu.



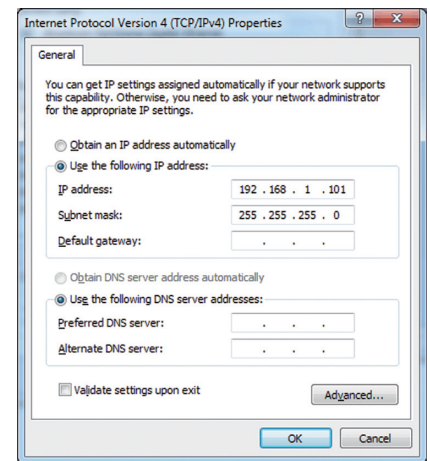
(2) Click [Network and Sharing Center]>[Local Area Setting].
In the [Local Area Connection Status] window, click [Properties].



(3) Click [Internet Protocol Version 4 (TCP/IPv4)] to select it, and click [Properties].



- (4) In the [Internet Protocol Version 4 (TCP/IPv4) Properties] window, check the radio button next to [Use the following IP address]. Enter the PC's IP address (e.g., [192.168.1.101]) in the [IP address] field, and enter the subnet mask [255.255.255.0] (unless otherwise specified) in the [Subnet mask] field. In the [Default gateway] field, enter the gateway address as necessary.
- Note: Consult the system administrator to decide the IP, subnet mask, and gateway addresses.
- (5) Keep clicking [OK] or [Close] to close all windows.



2-2. Setting the Web Browser

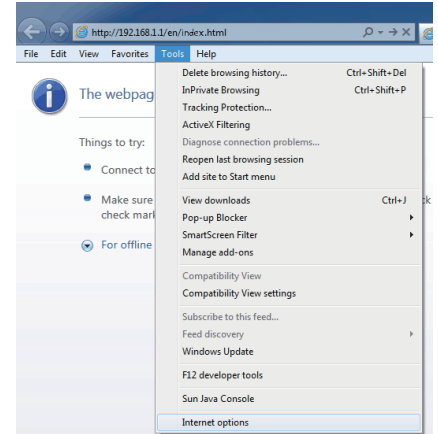
Web browser setting varies with the Internet connection type. See the sections below for how to make Web browser settings for different types of Internet connection.

To prevent unauthorized access, always use a security device such as a VPN router when connecting the AE-200/AE-50/EW-50 to the Internet.

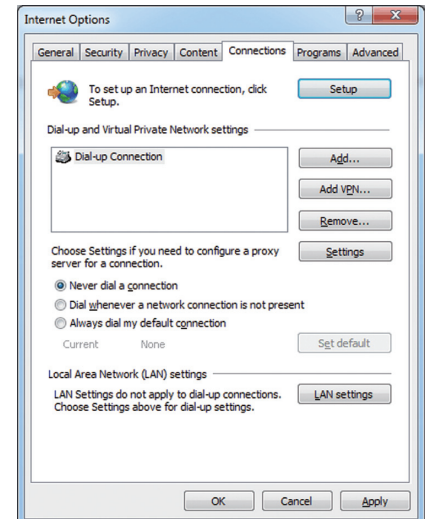
2-2-1. No Internet connection

To monitor and operate the air conditioning units from a PC with no Internet connection, follow the instructions below to set the environment for the Web browser.

(1) Click [Tools] in the menu bar, then click [Internet options].



(2) In the [Internet Options] window, click the [Connections] tab.

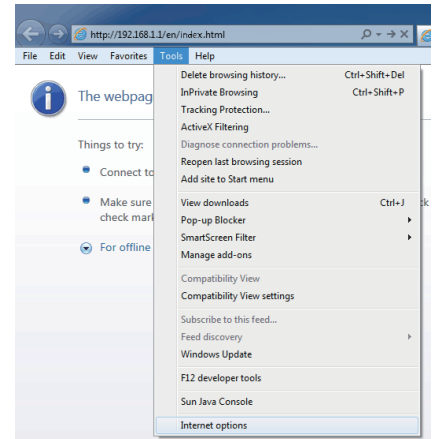


(3) Check the radio button next to [Never dial a connection] in the middle of the window, and click [OK] to close the window.

2-2-2. Dial-up Internet connection

To monitor and operate the air conditioning units from a PC that connects to the Internet through a dial-up connection, follow the instructions below to set the environment for the Web browser.

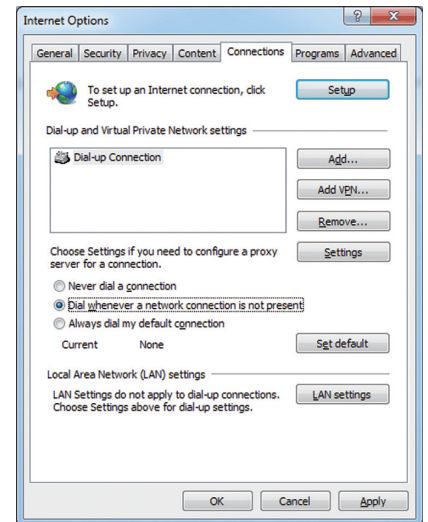
(1) Click [Tools] in the menu bar, then click [Internet options].



(2) In the [Internet Options] window, click the [Connections] tab.

(3) Check the radio button next to [Dial whenever a network connection is not present] in the middle of the window, and click [OK] to close the window.

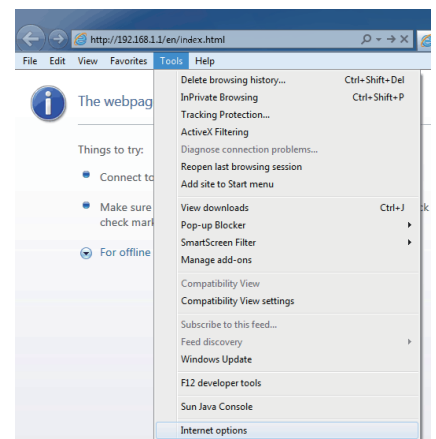
By making these settings, a message will appear asking whether or not to use a dial-up connection when an Internet connection is necessary. Follow the message to connect to the Internet.



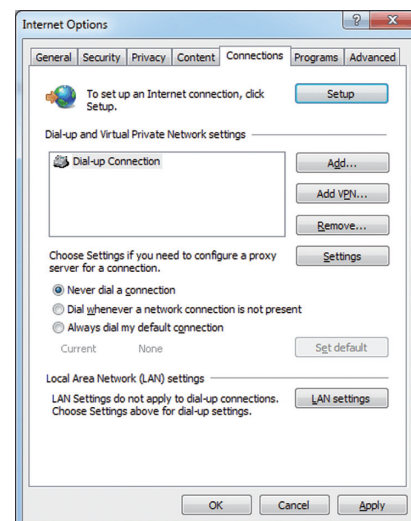
2-2-3. Connecting to the Internet via proxy server using an existing LAN

To monitor and operate the air conditioning units from a PC that connects to the Internet through a proxy server by connecting to an existing LAN, such as a LAN within your company, follow the instructions below to set the environment for the Web browser.

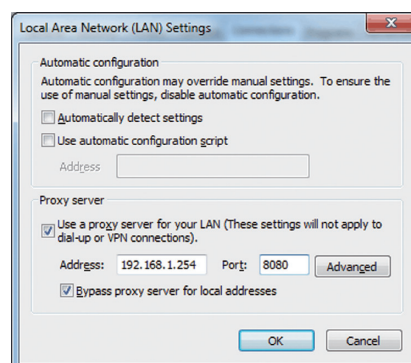
(1) Click [Tools] in the menu bar, then click [Internet options].



- (2) In the [Internet Options] window, click the [Connections] tab.
- (3) Check the radio button next to [Never dial a connection] in the middle of the window.
- (4) Click [LAN settings] under [Local Area Network (LAN) settings].

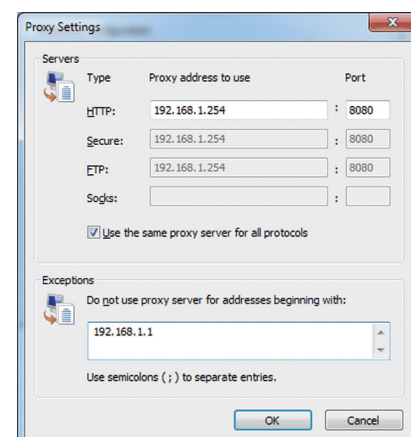


- (5) In the [Local Area Network (LAN) Settings] window, check [Bypass proxy server for local addresses], and click [Advanced].



- (6) In the [Proxy Settings] window, enter the AE-200/AE-50/EW-50's IP address (e.g., 192.168.1.1) in the [Exceptions] field. Then, keep clicking [OK] or [Close] to close all windows.

If connecting multiple AE-200/AE-50/EW-50 units, enter their addresses (e.g., [192.168.1.1; 192.168.1.2]). It is also possible to use an asterisk as a wildcard (e.g., [192.168.1.*]).



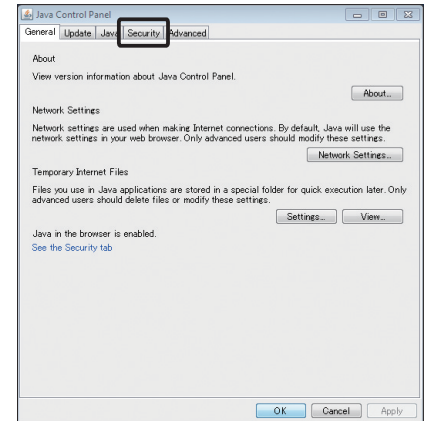
2-3. Java settings

2-3-1. How to register exception site list

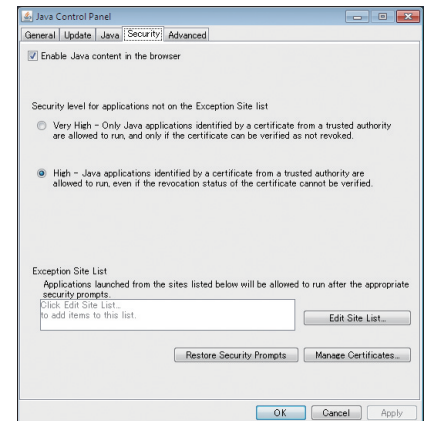
- (1) Click [Control Panel]>[Java].

Note: If [Category] is selected in the top right corner, next to [View by:], change it to [Large icons] or [Small icons].

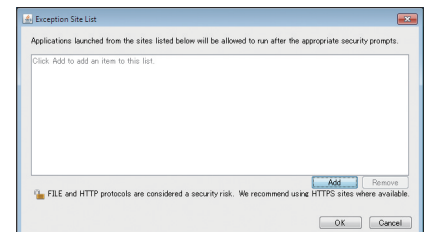
- (2) Java Control Panel will open.
Click the [Security] tab.



- (3) The security setting window will open.
Click the [Edit Site List...] button.



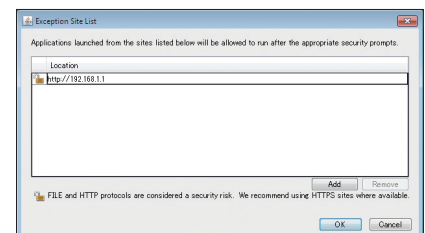
- (4) The [Exception Site List] dialog will appear.
Click [Add].



- (5) The [Exception Site List] dialog will appear.
In the white box, enter the following, and then click [OK].
http://[IP address of AE-200, AE-50, or EW-50]

Note: If the IP address of the AE-200 is [192.168.1.1], enter [http://192.168.1.1].

Note: When using HTTPS (SSL) connection, prefix the web address with [https]. (https://[IP address of AE-200, AE-50, or EW-50])

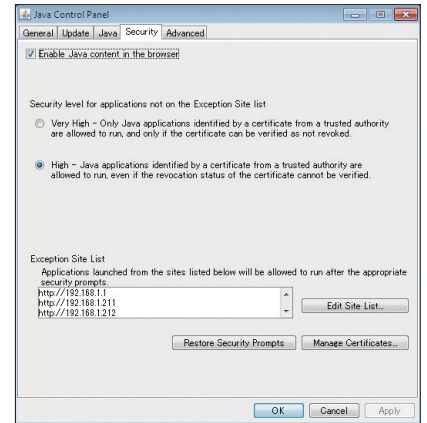


- (6) The security warning screen will appear.
Click [Continue].

Note: The security warning screen will not appear when HTTPS (SSL) connection is used.



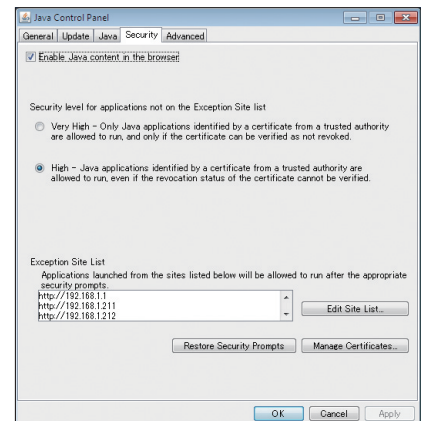
- (7) Add all AE-200/AE-50/EW-50 to the list in the same manner, and click [OK].



- (8) If a PC with 32-bit OS is used, after completing the settings, close all Internet Explorer windows, and access the Web page again to make sure the appropriate window will appear.
If a PC with 64-bit OS is used, go to step (9) below.
- (9) Click [My Computer]>[Local Disk (C:)]>[Program Files (x86)]*1>[Java]>[jre*] (The asterisk indicates a version number. (i.e., jre1.80_25))>[bin] to open the [bin] folder.
- *1 If a PC with 64-bit OS is used, both [Program Files] and [Program Files (x86)] folders will appear. Make sure to select [Program Files (x86)].
- (10) Double click the "javacpl.exe" file in the [bin] folder.
- (11) Java Control Panel will open. Follow the steps (3) through (8) again.

2-3-2. How to enable Java content

- (1) Open the security setting window. (See section 2-3-1 "How to register exception site list".)
- (2) Click on the checkbox next to [Enable Java content in the browser] unless it is already checked.
Click [Apply] at the right bottom corner of the screen, and then click [OK].



- (3) After completing the settings, close all Internet Explorer windows, and access the Web page again to make sure the appropriate window will appear.

3. Logging in to the Web Browser for User

- (1) Enter the web page address in the address field of the Web browser as follows:

http://[IP address of each AE-200, AE-50, or EW-50]/index.html

Press the [Enter] key. A login screen will appear.

Note: If the IP address of the AE-200/AE-50/EW-50 is [192.168.1.1], the web page address is [http://192.168.1.1/index.html].

Note: Default IP address of AE-200, AE-50, and EW-50 is [192.168.1.1]. When one or more AE-50/EW-50 controllers are connected, none of their IP addresses should overlap. The recommended IP address ranges are as follows.

AE-200: Between [192.168.1.1] and [192.168.1.40]

AE-50/EW-50 (when used for system expansion):

Between [192.168.1.211] and [192.168.1.249]

EW-50 (when used alone):

Between [192.168.1.1] and [192.168.1.40]

Note: Log in to the AE-200, AE-50, or EW-50 Web browser respectively to monitor or operate the units that are under the control of AE-200, AE-50, or EW-50. The Web browser cannot be switched among the AE-200, AE-50, and EW-50.

Note: If the login screen does not appear then take the steps below to delete the temporary files.

<Internet Explorer>

1. Click [Tools] in the menu bar, then click [Internet options].
2. On the [General] tab, click [Delete] in the middle of the window.
3. In the [Delete Browsing History] window, click [Delete].

<Java>

1. Click [Control Panel] from the Start menu.
2. Click the [Java] icon to launch the Java Control Panel.
3. On the [General] tab, click [Settings] in the [Temporary Internet Files] section.
4. Click [Delete Files].
5. In the [Delete Files and Applications] window, click [OK].

Note: The web page will be displayed in the same language as the operating system on the PC.

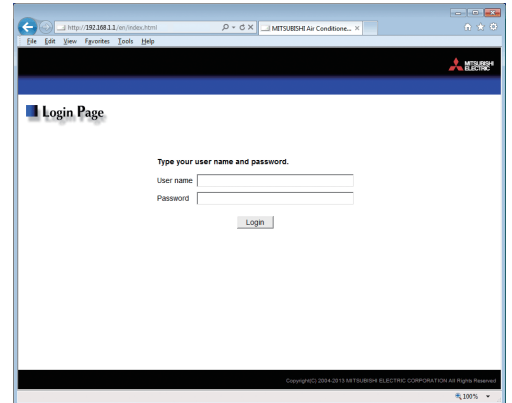
The web page can be displayed in other languages by entering the web page address as follows:

Chinese	http://[IP address of each AE-200, AE-50, or EW-50]/ zh /index.html
English	http://[IP address of each AE-200, AE-50, or EW-50]/ en /index.html
French	http://[IP address of each AE-200, AE-50, or EW-50]/ fr /index.html
German	http://[IP address of each AE-200, AE-50, or EW-50]/ de /index.html
Italian	http://[IP address of each AE-200, AE-50, or EW-50]/ it /index.html
Japanese	http://[IP address of each AE-200, AE-50, or EW-50]/ ja /index.html
Portuguese	http://[IP address of each AE-200, AE-50, or EW-50]/ pt /index.html
Russian	http://[IP address of each AE-200, AE-50, or EW-50]/ ru /index.html
Spanish	http://[IP address of each AE-200, AE-50, or EW-50]/ es /index.html

Note: You can add the web page address to your Favorites on the login screen for easy access in the future.

- (2) Enter the user name and the password in the login screen, and click [Login]. A Condition List screen will appear, which shows the operation conditions of groups.

Note: Consult the building manager for your user name and password.



Encrypting the communication data and logging in to the Web browser (HTTPS connection)

AE-200/AE-50/EW-50 can encrypt communication data using HTTPS (SSL).

When connecting the AE-200/AE-50/EW-50 to the LAN that is accessible to the general public, it is recommended that the following settings be made so that the units are monitored and controlled on the encrypted web page.

Note: Depending on the operating system or the Java version, HTTPS encrypted communication may not be enabled properly.
If this happens, use an HTTP connection as explained in the previous page.

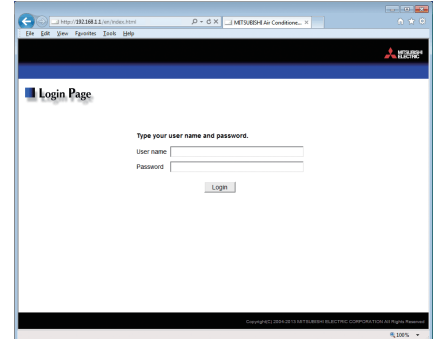
- (1) Prefix the web address with [https], enter the rest of the address, and press the [Enter] key.

https://[IP Address of each AE-200, AE-50, or EW-50]/index.html

Note: If the IP address of the AE-200/AE-50/EW-50 is [192.168.1.1], the web page address is [https://192.168.1.1/index.html].

The encrypted data communication will begin, and the Login screen will appear.

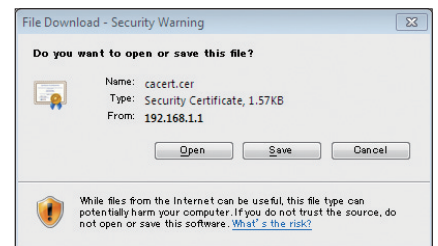
When the first time the Web browser is accessed, a security certificate error page appears instead of the Login screen. Go to step (2) below.



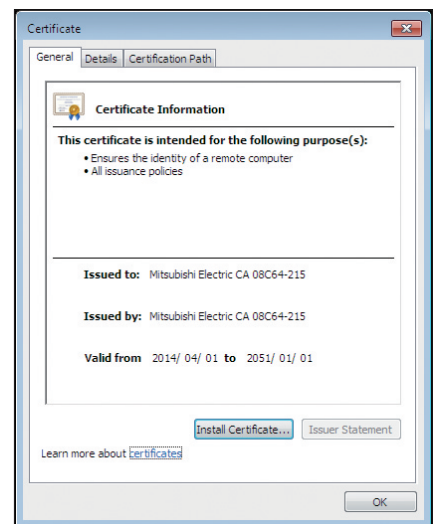
- (2) Enter the following web page address in the address field of the Web browser, and press the [Enter] key:

http://[IP address of each AE-200, AE-50, or EW-50]/cacert.cer

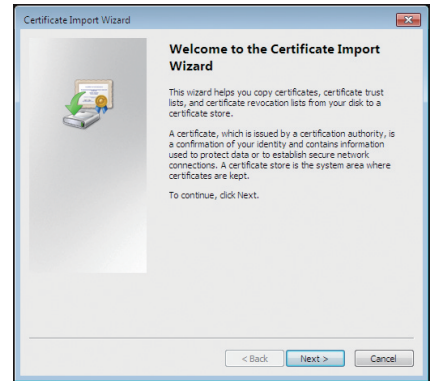
- (3) A notification bar or a window to confirm about file download will appear.
Click [Open].



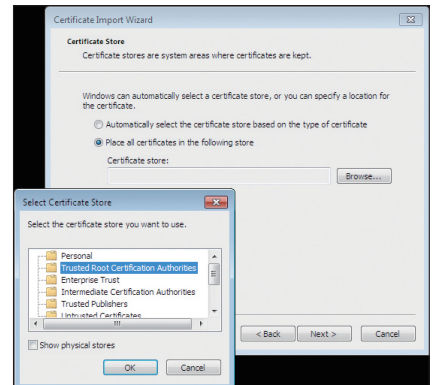
- (4) A certificate dialog will appear.
Click [Install Certificate...].



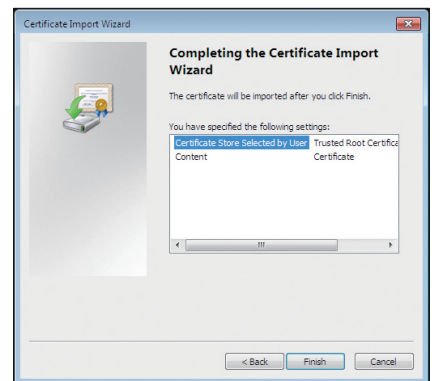
- (5) A Certificate Import Wizard window will appear.
Click [Next].



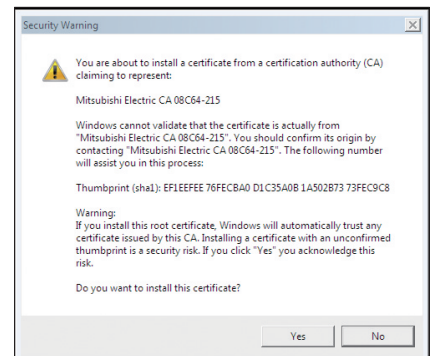
- (6) Choose [Place all certificates in the following store] and click the [Browse...] button.
Select [Trusted Root Certification Authorities], click [OK], and then click [Next].



- (7) Click [Finish] on completing the Certificate Import Wizard.

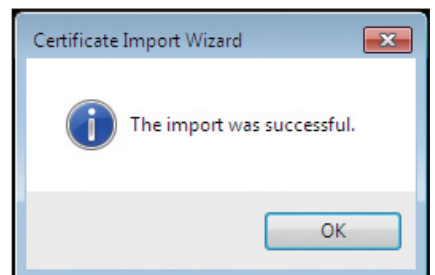


- (8) Click [Yes] on the security warning to install the certificate.



- (9) Certificate import process starts. A window will appear when the import completes successfully.
Click [OK].

Note: The valid period of the certificate is from April 1st, 2014 to January 1st, 2051. The system date and time of the PC must be within the period.



4. Monitor/Operation

This chapter explains how to monitor the operation conditions of all groups collectively and how to operate each group or all groups collectively.

4-1. Condition List

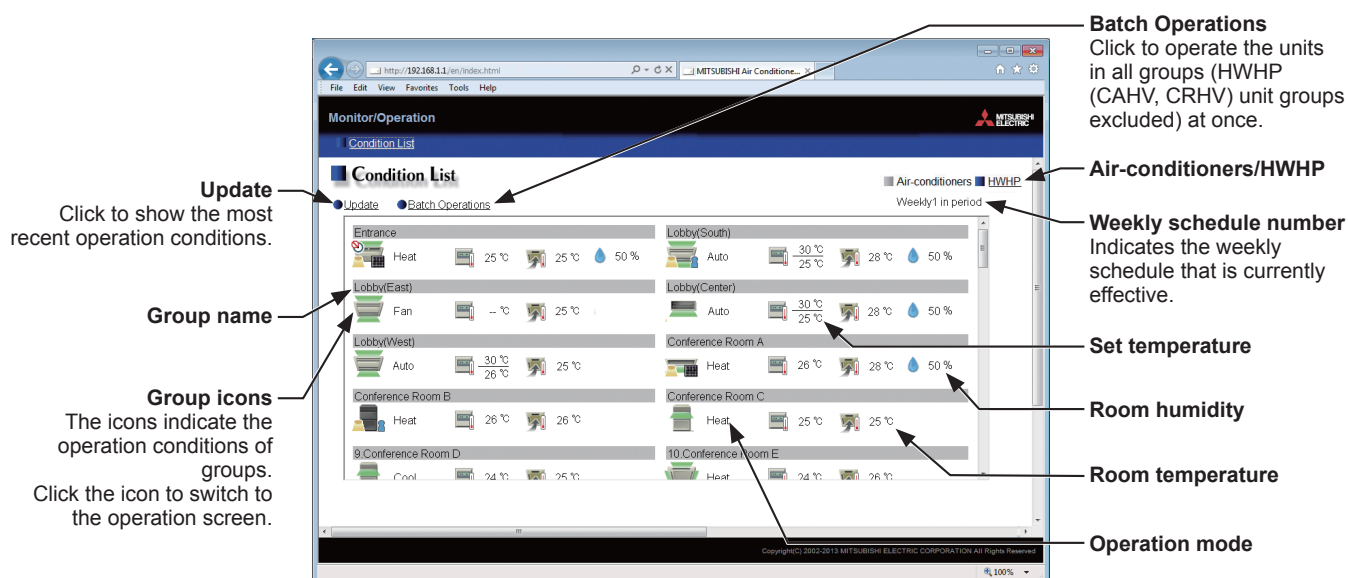
On the Condition List screen, the operation conditions of all groups can be monitored. The operator can also check the unit malfunctions on this screen and prevent the units from being left on unintentionally.

This section explains how to monitor the operation conditions of all groups (HWHP (CAHV, CRHV) unit groups excluded) collectively (see section 4-1-1), how to monitor the operation conditions of HWHP (CAHV, CRHV) unit groups (see section 4-1-2), and also explains how to operate each group (see section 4-1-3), or all groups collectively (see section 4-1-4).

After login, a Condition List screen will appear, which shows the operation conditions of all air conditioning unit groups, LOSSNAY unit (ventilator) groups, Air To Water (PWFY) unit groups, and general equipment groups.

4-1-1. Checking the operation conditions of all groups (HWHP (CAHV, CRHV) unit groups excluded)

In the “Air-conditioners/HWHP” section, select [Air-conditioners] to display the operation conditions of air conditioning unit groups, LOSSNAY unit (ventilator) groups, Air To Water (PWFY) unit groups, and general equipment groups.



Item	Description
Air-conditioners/HWHP	Click [Air-conditioners] to display the operation conditions of air conditioning unit groups, LOSSNAY unit groups, Air To Water (PWFY) unit groups, and general equipment groups, and click [HWHP] to display the operation conditions of HWHP (CAHV, CRHV) unit groups.
Update	Click to show the most recent operation conditions.
Batch Operations	Click to operate the units in all groups (HWHP (CAHV, CRHV) unit groups excluded) at once. (See section 4-1-4.)
Group name	The name of the group will appear.
Operation mode	The operation mode of the group will appear.
Set temperature	The set temperature of the group will appear. Note: For Air To Water (PWFY) unit groups, the set water temperature will appear. Note: The temperature unit (°C or °F) can be set on the Basic System settings screen, accessible via the Web Browser for Initial Settings.
Room temperature	Indoor unit return air temperature will appear. Note: The temperature shown may be different from the actual room temperature. Note: For Air To Water (PWFY) unit groups, the current water temperature will appear. Note: The temperature unit (°C or °F) can be selected on the Basic System settings screen, accessible via the Web Browser for Initial Settings.

Item	Description																												
Room humidity	<p>The reading of the humidity sensor on the ME remote controller (North America: PAR-U01MEDU, Europe: PAR-U02MEDA) will appear.</p> <p>Note: If an ME remote controller (North America: PAR-U01MEDU, Europe: PAR-U02MEDA) is connected to the group and the built-in humidity sensor is enabled, the reading of the sensor will appear.</p>																												
Group icons	<p>Each group icon indicates the operation condition of the group. Move the cursor to the icon to display its group name. Clicking the icon will bring up the operation screen.</p> <p>The icons to indicate the operation conditions are shown below.</p> <p>(1) Air conditioning unit group</p> <table><tr><td>ON</td><td>OFF</td><td>Error</td><td>Filter sign ON</td></tr><tr><td></td><td></td><td></td><td></td></tr></table> <table><tr><td>Interlocked LOSSNAY ON *1*5</td><td>Interlocked LOSSNAY OFF *2*5</td><td>Schedule set</td><td>Schedule disabled</td></tr><tr><td></td><td></td><td></td><td></td></tr></table> <table><tr><td>Energy-saving ON</td><td>Setback ON</td><td>Starting up *9</td><td>Occupied/Vacant *3*4*5</td></tr><tr><td></td><td></td><td></td><td></td></tr></table> <table><tr><td>Bright/Dark *6*7*8</td><td>HOLD ON *10</td></tr><tr><td></td><td></td></tr></table> <p>Note: Besides the 4-way airflow unit icons, 2-way airflow or ceiling-suspended unit icons are also available. Icons can be selected on the group settings screen, accessible via the Web Browser for Initial Settings.</p> <p>*1 If the LOSSNAY unit is interlocked with the operation of Mr. Slim units, “Interlocked LOSSNAY ON” icon will appear, even when the LOSSNAY unit is operated individually. (Applicable M-NET adapter model: PAC-SF48/50/60/70/80/81MA-E)</p> <p>*2 If a LOSSNAY unit is interlocked with the operation of indoor units in multiple groups, the LOSSNAY unit may be in operation, even when the “Interlocked LOSSNAY OFF” icon is displayed.</p> <p>*3 The Occupancy/Vacancy status icon will appear only when [Show occupancy icon], [Show vacancy icon], or [Show both icons] is selected in the [Occupancy sensor display] section under the [Display Format] section of the Basic System settings screen, accessible via the Web Browser for Initial Settings.</p> <p>*4 The Occupancy/Vacancy status icon will not appear if the remote controller in the group does not have an occupancy sensor.</p> <p>*5 The Occupancy/Vacancy status icon takes priority over the “Interlocked LOSSNAY ON” or “Interlocked LOSSNAY OFF” icon.</p> <p>*6 The Brightness/Darkness status icon will appear only when [Show bright symbol], [Show dark symbol], or [Show both symbols] is selected in the [Brightness sensor display] section under the [Display Format] section of the Basic System settings screen, accessible via the Web Browser for Initial Settings.</p> <p>*7 The Brightness/Darkness status icon will not appear if the remote controller in the group does not have a brightness sensor.</p> <p>*8 The “Setback ON” icon takes priority over the Brightness/Darkness status icon.</p> <p>*9 The “Starting up” icon will stay when the unit cannot be recognized after startup. Check for proper connection of the air conditioning unit and proper group settings.</p> <p>*10 The Hold function can be used on the AE-200A/AE-50A/EW-50A, but not on the AE-200E/AE-50E/EW-50E.</p>	ON	OFF	Error	Filter sign ON					Interlocked LOSSNAY ON *1*5	Interlocked LOSSNAY OFF *2*5	Schedule set	Schedule disabled					Energy-saving ON	Setback ON	Starting up *9	Occupied/Vacant *3*4*5					Bright/Dark *6*7*8	HOLD ON *10		
	ON	OFF	Error	Filter sign ON																									
	Interlocked LOSSNAY ON *1*5	Interlocked LOSSNAY OFF *2*5	Schedule set	Schedule disabled																									
	Energy-saving ON	Setback ON	Starting up *9	Occupied/Vacant *3*4*5																									
	Bright/Dark *6*7*8	HOLD ON *10																											

Item	Description			
Group icons	(2) LOSSNAY unit (ventilator) group			
	ON	OFF	Error	Filter sign ON
	Schedule set	Energy-saving ON	Schedule disabled	HOLD ON
	(3) Air To Water (PWFY) unit group and HWHP (CAHV, CRHV) unit group			
	ON	OFF	Error	Schedule set
	Schedule disabled	Energy-saving ON *1	Water temperature display *2	HOLD ON
	*1 This icon will not appear for the HWHP (CAHV, CRHV) unit groups. *2 The "Water temperature display" icon will not appear for the HWHP (CAHV, CRHV) unit groups.			
	(4) General equipment group			
	ON	OFF	Error	Schedule set
	Schedule disabled	HOLD ON		
	Note: Besides the lighting icons, pump or card key icons are also available. The icon can be selected on the group settings screen, accessible via the Web Browser for Initial Settings.			

4-1-2. Checking the operation conditions of HWHP (CAHV, CRHV) unit groups

In the “Air-conditioners/HWHP” section, select [HWHP] to display the operation conditions of the HWHP (CAHV, CRHV) unit groups.

Note: The [HWHP] button will not appear if no HWHP (CAHV, CRHV) units have been registered to any group.

Update
Click to show the most recent operation conditions.

Batch Operations
Click to operate the units in all HWHP (CAHV, CRHV) unit groups at once.

Air-conditioners/HWHP
Weekly1 in period

Weekly schedule number
Indicates the weekly schedule that is currently effective.

HWHP (CAHV, CRHV) unit group icons
The icons indicate the operation conditions of groups. Click the icon to switch to the operation screen.

Group name

Operation mode

Set temperature

Fan mode

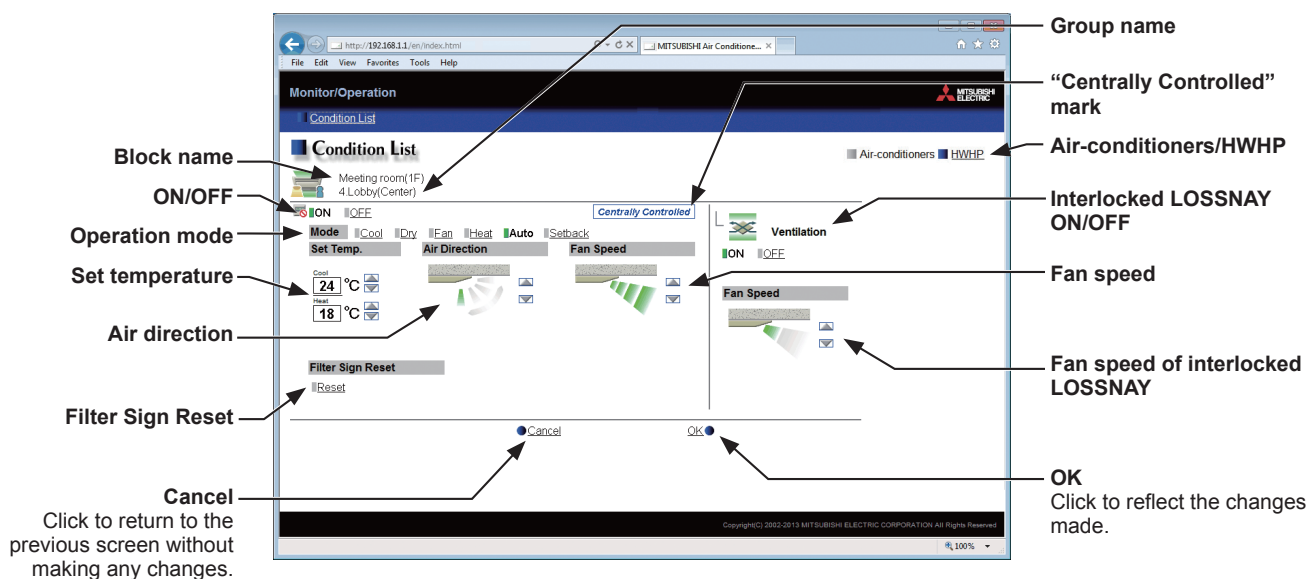
Temperature

Item	Description
Air-conditioners/HWHP	Click [Air-conditioners] to display the operation conditions of air conditioning unit groups, LOSSNAY unit groups, Air To Water (PWFY) unit groups, and general equipment groups, and click [HWHP] to display the operation conditions of HWHP (CAHV, CRHV) unit groups.
Update	Click to show the most recent operation conditions.
Batch Operations	Click to operate the units in all HWHP (CAHV, CRHV) unit groups at once.
HWHP (CAHV, CRHV) unit group icons	Each group icon indicates the operation condition of the group. Clicking the icon will bring up the operation screen.
Group name	The name of the group will appear.
Operation mode	The operation mode of the group will appear.
Set temperature	The set temperature of the group will appear. Note: The temperature unit (°C or °F) can be selected on the Basic System settings screen, accessible via the Web Browser for Initial Settings.
Temperature	The representative water temperature, outdoor temperature, brine temperature, inlet water temperature, and outlet water temperature will appear. Note: When there is a communication error, the temperature value will be "--." Note: The brine temperature will not appear for HWHP (CAHV) unit groups. Note: The temperature unit (°C or °F) can be selected on the Basic System settings screen, accessible via the Web Browser for Initial Settings.
Fan mode	The fan mode of the group will appear. (CAHV model only)



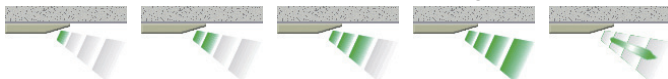




4-1-3. Operating the units in a given group

In the [Air-conditioners] display of the Condition List screen, click one of the group icons to display its operation settings screen, which shows the current operation conditions. Change the desired settings and click [OK] to reflect the changes. Click [Cancel] to return to the previous screen without making any changes.

Note: To operate an HWHP (CAHV, CRHV) unit group, click the icon of the group on the HWHP display of the Condition List screen.



Item	Description
Air-conditioners/HWHP	Click [Air-conditioners] to display the operation conditions of air conditioning unit groups, LOSSNAY unit groups, Air To Water (PWFY) unit groups, and general equipment groups, and click [HWHP] to display the operation conditions of HWHP (CAHV, CRHV) unit groups.
ON/OFF	Click [ON] or [OFF] to turn on or off the units in a given group. Note: Switching this switch will turn on or off the LOSSNAY unit as well that is interlocked with the operation of indoor units in the group. To turn on or off the LOSSNAY unit only, use the "Interlocked LOSSNAY ON/OFF" switch.
Operation mode *1	Click the desired operation mode. Air conditioning unit: Cool, Dry, Fan, Heat, Auto, Setback LOSSNAY unit: Heat Recovery, Bypass, Auto Air To Water (PWFY) unit: Heating, Heating ECO, Hot Water, Anti-freeze, Cooling HWHP (CAHV, CRHV) unit: Heating, Heating ECO, Hot Water, Anti-freeze Note: Only the operation modes available for the unit model will appear. Note: The Setback mode can be selected on the AE-200A/AE-50A/EW-50A, but not on the AE-200E/AE-50E/EW-50E.
Set temperature *1	Click or to adjust the set temperature of the air conditioning unit or the Air To Water (PWFY) unit. Note: The settable temperature ranges depend on the unit model. Note: If the indoor unit supports the dual set point function in the AUTO mode and when the operation mode above is set to Auto or Setback, two set temperatures for Cool mode and Heat mode can be set. Note: When the indoor units that support the dual set point function and the indoor units that do not support the dual set point function exist in the same group, only one set temperature can be set in the AUTO mode. Note: The temperature range restrictions settings on the Set Temperature Range Limit settings screen on the Web Browser for Initial Settings will be effective on this screen. Note: The temperature unit (°C or °F) can be selected on the Basic System settings screen, accessible via the Web Browser for Initial Settings.
Air Direction *1	Click or to adjust the air direction. (Mid 3) (Mid 2) (Mid 1) (Mid 0) (Horizontal) (Swing) (Auto) Note: Available air directions depend on the unit model.

Item	Description
Fan Speed *1	Click  or  to adjust the fan speed. <div style="display: flex; justify-content: space-around; align-items: center;"> (Low) (Mid 2) (Mid 1) (High) (Auto) </div>  <p>Note: Available fan speeds depend on the unit model.</p>
Fan Mode *1	This item will appear only on the operation settings screen for HWHP (CAHV, CRHV) unit groups. The fan can be set to keep rotating even while the unit is stopped to avoid snow accumulation on the fan guard during the winter. Select [Normal] to stop the fan while the unit is stopped. Select [Snow] to operate the fan even while the unit is stopped.
Filter Sign Reset	Click [Reset] to switch between resetting and not resetting the filter sign. The rectangular icon next to Reset will appear in yellow-green when it is set to Reset (). Note: If a filter sign in the group has not been triggered, then the item [Filter Sign Reset] will not appear. Note: After the filter sign is reset, it takes up to an hour to clear the filter sign display on the local remote controllers.
Interlocked LOSSNAY ON/OFF	Click [ON] or [OFF] to turn on or off the interlocked LOSSNAY unit. Note: For a group that is not connected to an interlocked LOSSNAY unit (ventilator), the item [Interlocked ventilator ON/OFF] will not appear.
Fan speed of interlocked LOSSNAY	Click  or  to adjust the fan speed of the interlocked LOSSNAY unit (ventilator). Note: For a group that is not connected to an interlocked LOSSNAY unit, the item [Fan speed of interlocked LOSSNAY] will not appear.
Prohibition icon	Prohibition icon  will appear next to the item whose operation is prohibited. If one or more operation items are prohibited, Centrally Controlled will appear.

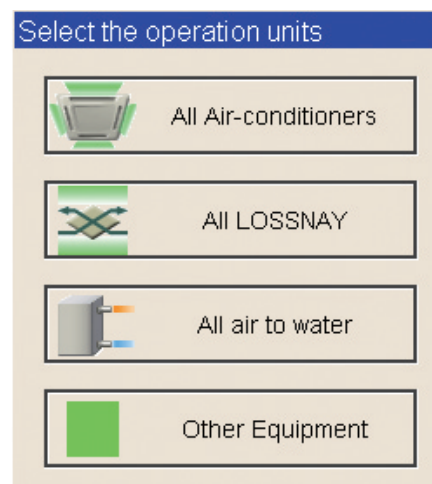
*1 The item may not be displayed, depending on the unit model.

4-1-4. Operating the units in all groups

- (1) In the [Air-conditioners] display of the Condition List screen, click [Batch Operations]. If air conditioner group, LOSSNAY unit (ventilator) group, Air To Water (PWFY) unit group, and general equipment group exist together in the same system, a screen to select a group type will appear.

Click one of the group types to change its settings.

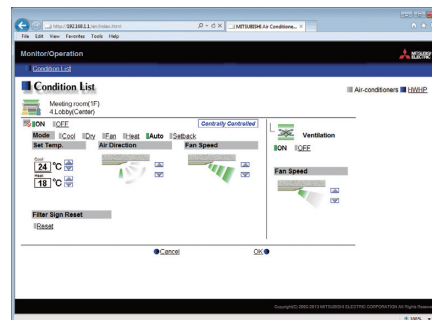
Note: To operate all HWHP (CAHV, CRHV) unit groups, click [Batch Operations] in the HWHP display of the Condition List screen.



- (2) On the operation settings screen, change the desired settings and click [OK] to reflect the changes.
Click [Cancel] to return to the previous screen without making any changes.

Note: The settable temperature range is limited for the group whose set temperature restrictions settings have been made.

Note: If any group out of the given groups has an operation item that is prohibited, the item for the group can not be operated.



This product is designed and intended for use in the residential,
commercial and light-industrial environment.

The product at hand is based on the following EU regulations:

- Low Voltage Directive 2006/95/EC
- Electromagnetic Compatibility Directive 2004/108/EC
- Restriction of Hazardous Substances 2011/65/EU

Please be sure to put the contact address/telephone number
on this manual before handing it to the customer.

MITSUBISHI ELECTRIC CORPORATION

HEAD OFFICE: TOKYO BLDG., 2-7-3, MARUNOUCHI, CHIYODA-KU, TOKYO 100-8310, JAPAN