



AIRSTAGE™ J-II

Variable Refrigerant Flow System

7. OPTIONAL PARTS

CONTENTS

7. OPTIONAL PARTS

1. SEPARATION TUBE	07 - 01
2. HEADER.....	07 - 03
3. EV KIT	07 - 06
4. CONTROLLER.....	07 - 07
5. ADAPTOR / CONVERTOR	07 - 08
6. OTHERS.....	07 - 09
6-1. PARTS LIST.....	07 - 09

1. SEPARATION TUBE

■ CONNECTION CAPACITY

Separation tube
UTR-BP090X

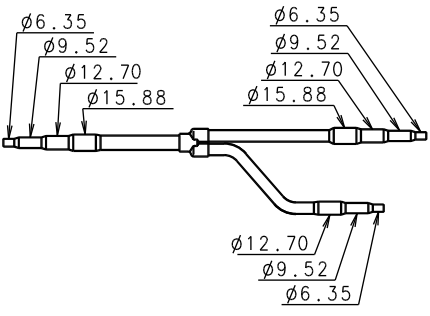
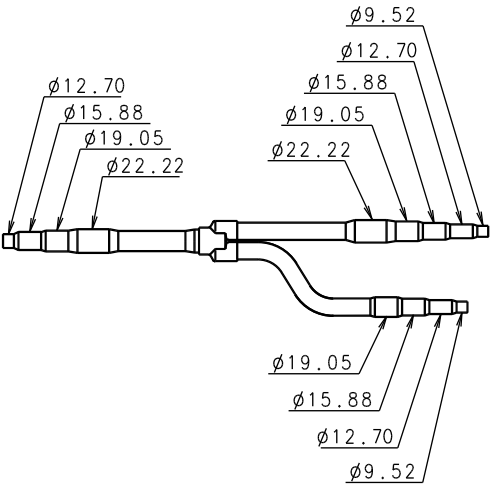
(UNIT : kW)

UTR-BP090X	
<p>Separation Tube (liquid pipe)</p> <p>4.4 or more to 28.0 2.2 or more to 25.8</p> <p>2.2 or more to 18.0</p>	<p>Separation Tube (gas pipe)</p> <p>4.4 or more to 28.0 2.2 or more to 25.8</p> <p>2.2 or more to 18.0</p>

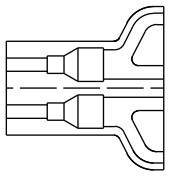

(Unit : mm)

■ UTR-BP090X

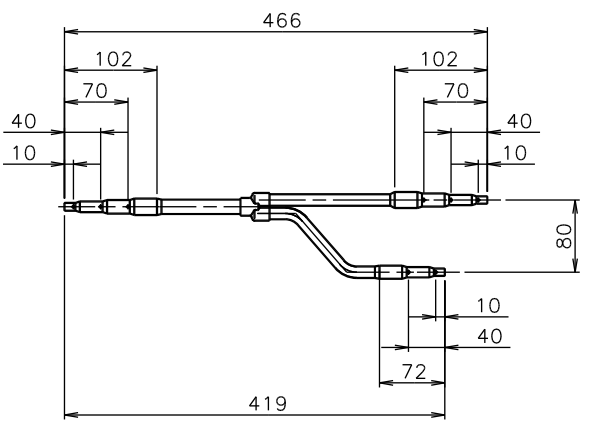
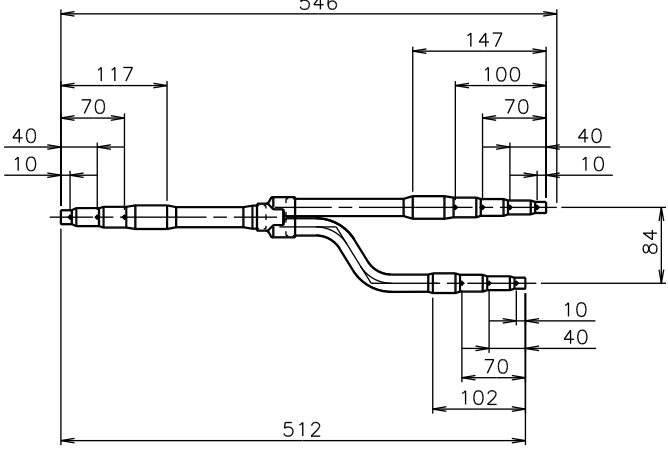
● Port diameters

Liquid pipe	Q'ty	Gas pipe	Q'ty
	1		1

● Heat insulation

Heat insulation	Q'ty	Application	Tape	Q'ty
	2	Large x 1 (for gas pipe) Small x 1 (for liquid pipe)		8

● Dimensions

Liquid pipe	Gas pipe
	

OPTIONAL PARTS

OPTIONAL PARTS

2. HEADER

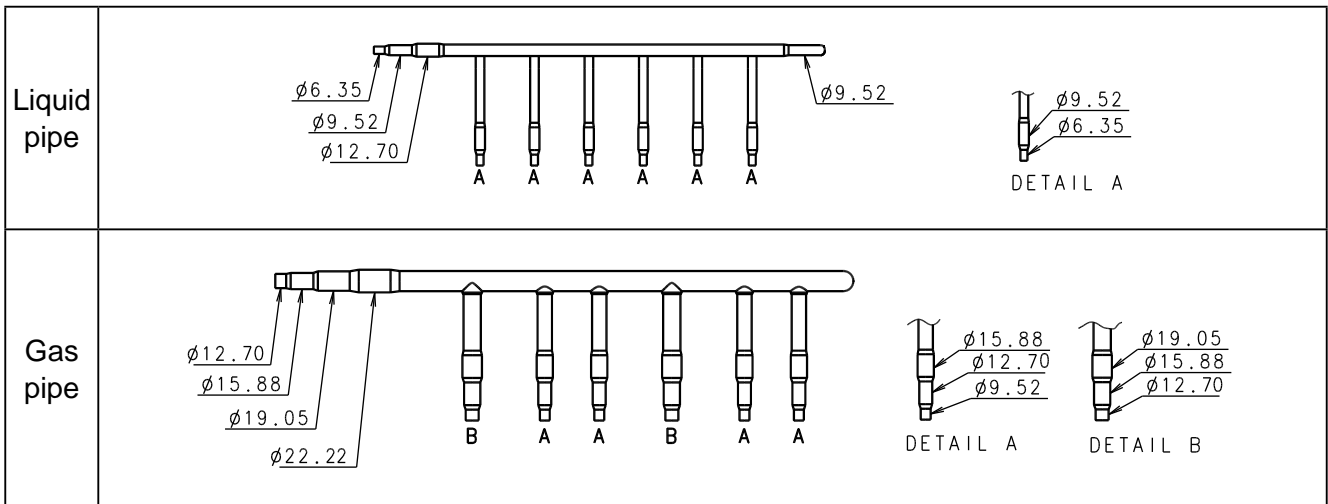
■ CONNECTING CAPACITY

Header	
3 - 6 Branches	3 - 8 Branches
UTR-H0906L	UTR-H0908L

MODEL : UTR-H0906L

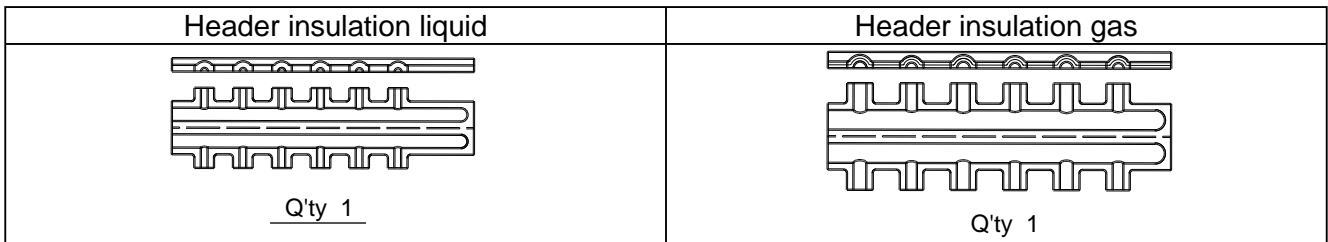
(Unit : mm)

● Port diameters

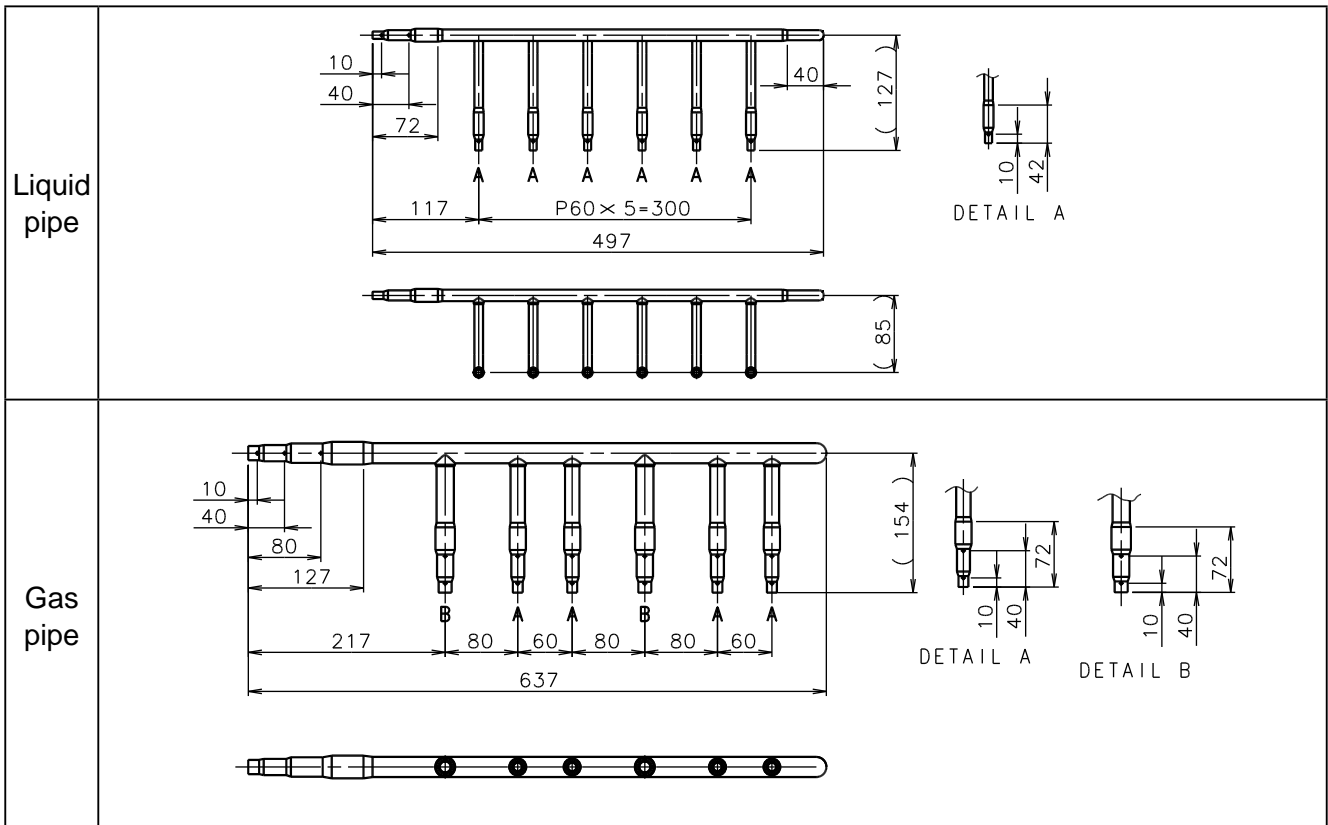


Closed pipe A	Closed pipe B	Closed pipe C	Closed pipe insulation

● Heat insulation



● Dimensions



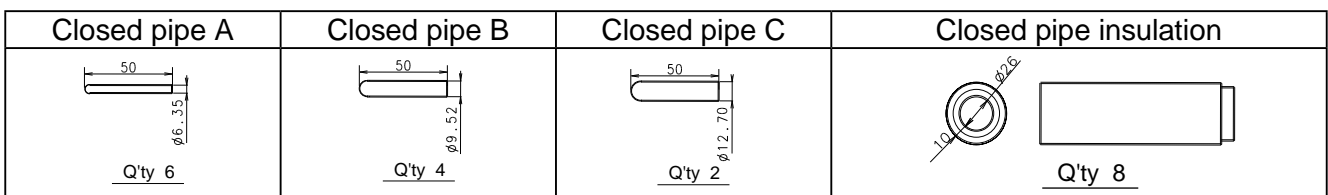
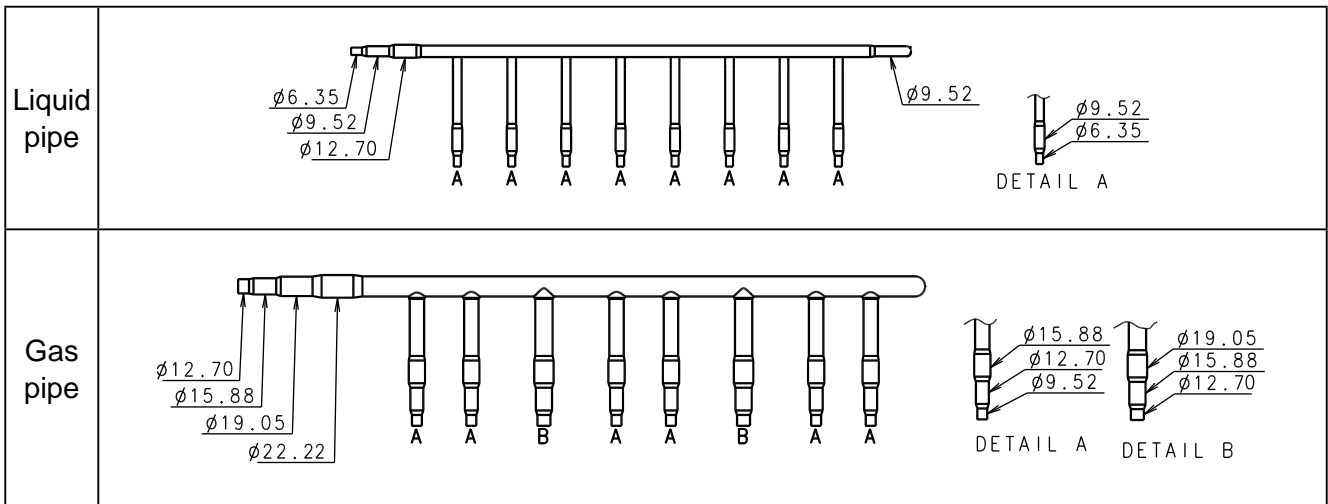
OPTIONAL PARTS

OPTIONAL PARTS

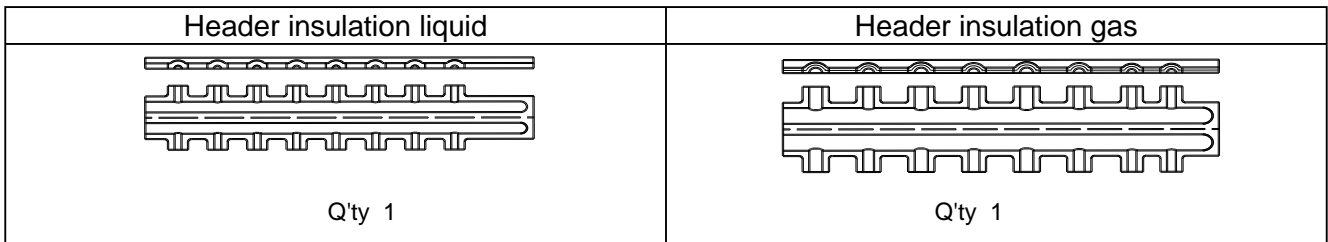
MODEL : UTR-H0908L

(Unit : mm)

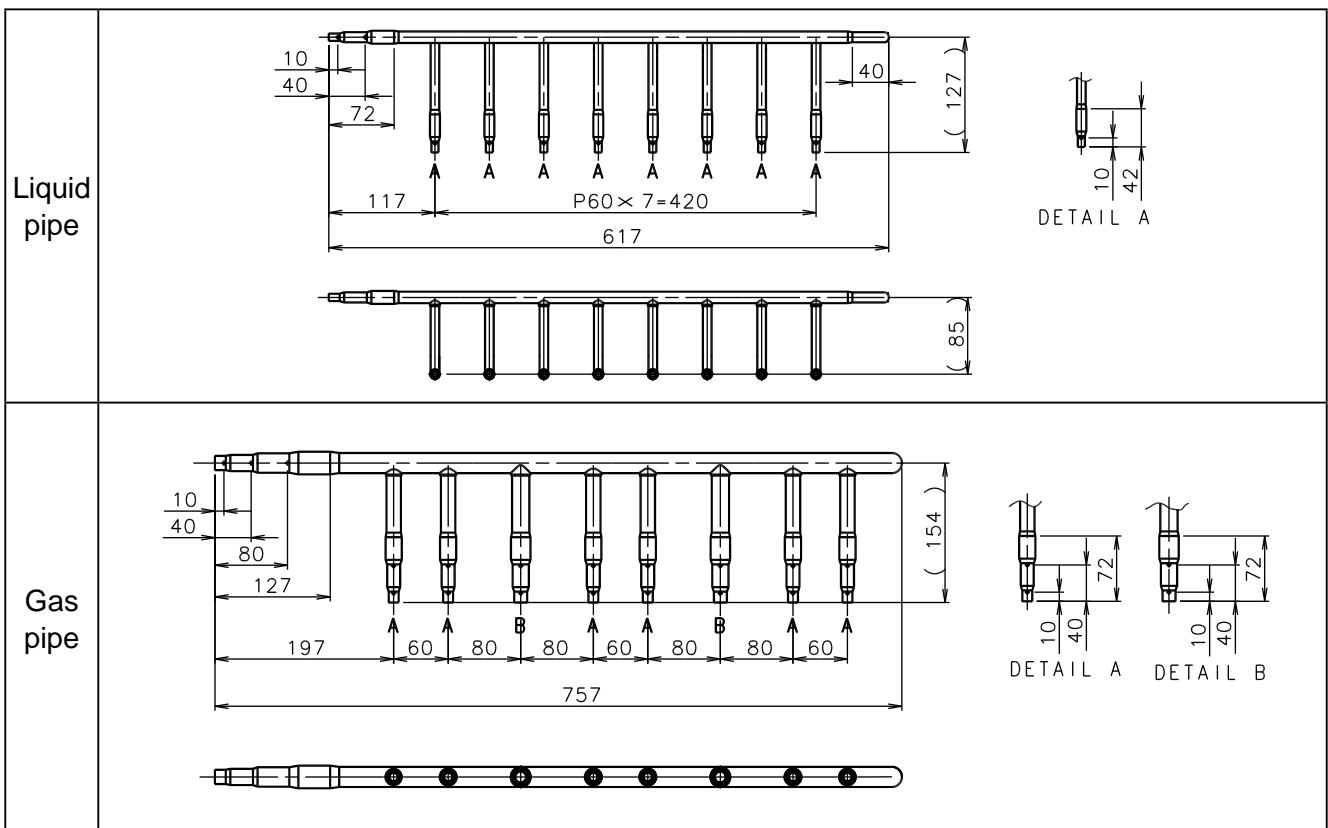
● Port diameters



● Heat insulation



● Dimensions



OPTIONAL PARTS

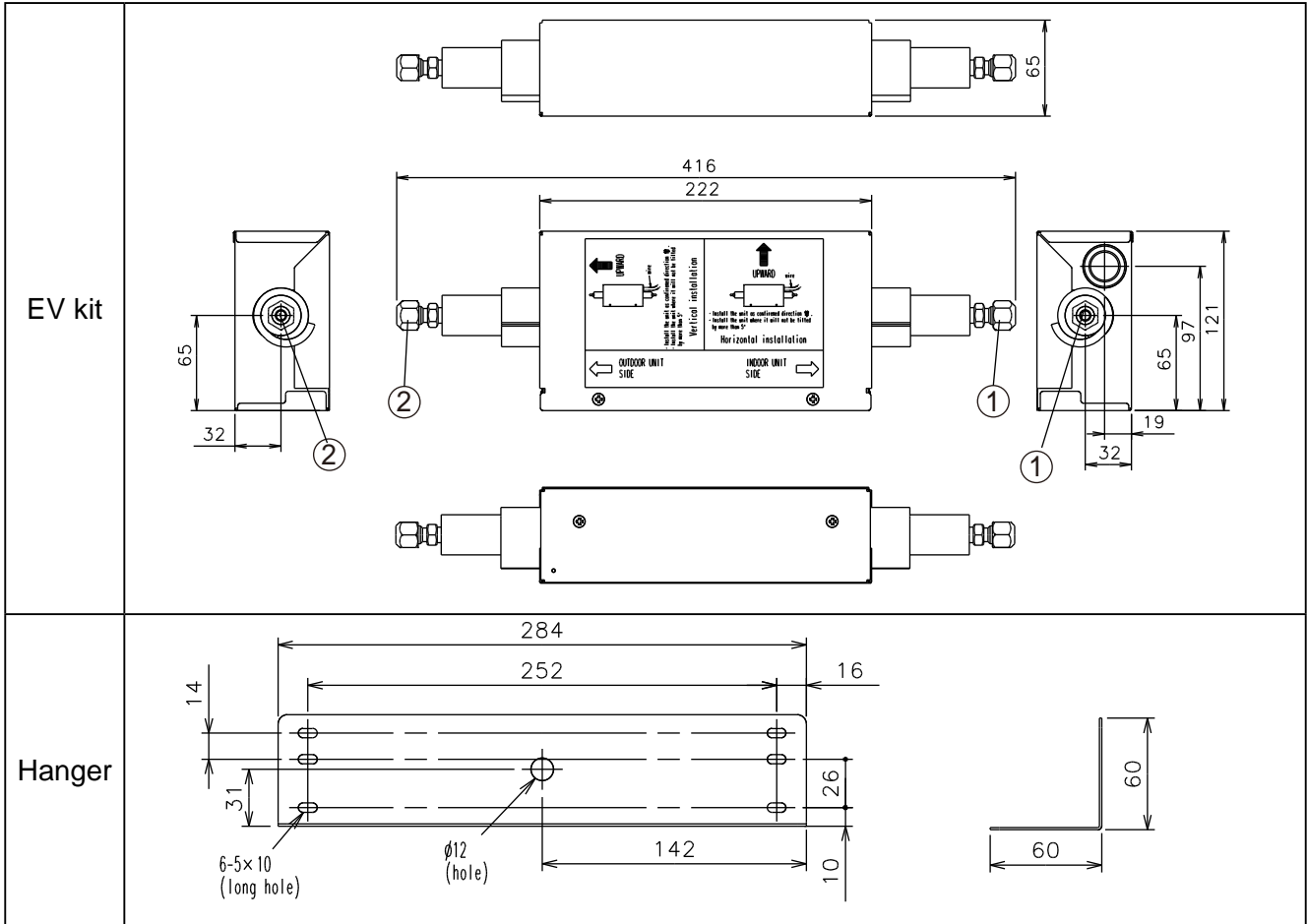
OPTIONAL PARTS

3. EV KIT

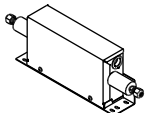





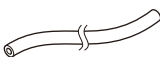
■ MODELS : UTR-EV09XB, UTR-EV14XB

(Unit : mm)

Model	Applicable model
UTR-EV09XB	AS*E07LACH AS*E09LACH
UTR-EV14XB	AS*E12LACH AS*E14LACH



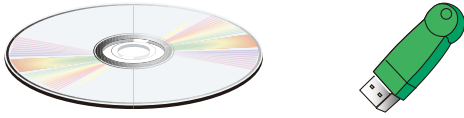
①	Refrigerant pipe flare connection (liquid pipe)	Indoor unit side	ø 6.35 mm
②		Outdoor unit side	ø 6.35 mm

Name and Shape	Q'ty	Name and Shape	Q'ty	Name and Shape	Q'ty	Name and Shape	Q'ty
EV kit 	1	Coupler heat insulation 	2	Special nut A (M10) (large frange) 	1	Special nut B (M10) (small frange) 	1
Binder 	Large	Screw 	4	Tube 	1		
	Small					2	

4. CONTROLLER

■ SYSTEM CONTROLLER (Software)

- UTY-APGX



- CD-ROM
- Software protection key
- Maximum 1600 groups / 1600 indoor units can be controlled
- Monitoring status of operation

■ TOUCH PANEL CONTROLLER

- UTY-DTG*



- Maximum 400 groups / 400 indoor units can be controlled
- With yearly timer

■ CENTRAL REMOTE CONTROLLER

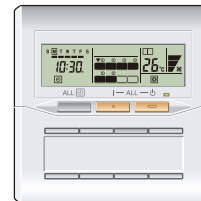
- UTY-DCG*



- Maximum 16 groups / 100 indoor units can be controlled
- With weekly timer

■ GROUP REMOTE CONTROLLER

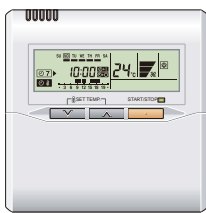
- UTY-CGG*



- Maximum 8 remote controller groups (128 indoor units)
- With weekly timer

■ WIRED REMOTE CONTROLLER

- UTY-RNK*



- On / Off weekly timer
- Built in thermo sensor

■ SIMPLE REMOTE CONTROLLER

- UTY-RSK*

With Operation mode



- UTY-RHK*

Without Operation mode



- Background light
- Easy operation

■ WIRELESS REMOTE CONTROLLER

- UTY-LNH*



- On / Off sleep, program timer
- Easy operation

5. ADAPTOR / CONVERTOR

■ NETWORK CONVERTOR

- UTY-VGGX



- (Split system convertor)
- (Group remote convertor)

■ NETWORK CONVERTOR for LONWORKS®

- UTY-VLGX



- LON / LON Convertor

■ SIGNAL AMPLIFIER

- UTY-VSGX



If the total length of transmission line exceeds 500m, or the number of units exceeds 64 units, Signal Amplifier will be necessary to use

■ EXTERNAL SWITCH CONTROLLER

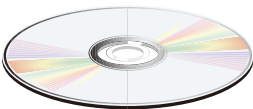
- UTY-TEKX



Air conditioner switching can be controlled by connecting other sensor switches

■ BACnet® GATEWAY (Software)

- UTY-ABGX



- CD-ROM
- Software protection key

- VRF/BMS Convertor

6. OTHERS

6-1. PARTS LIST

Type	Model name	Grill kit		Air outlet shutter plate		Panel spacer	Wide panel	Insulation kit for high humidity		
		UTG-UF*C-W	UTG-UG*A-W	UTR-YDZB	UTR-YDZC			UTG-BGYA-W	UTG-AGYA-W	UTZ-KXGA
Compact Cassette	AUXB07LALH	○		○						○
	AUXB09LALH	○		○						○
	AUXB12LALH	○		○						○
	AUXB14LALH	○		○						○
	AUXB18LALH	○		○						○
	AUXB24LALH	○		○						○
Cassette	AUXD18LALH		○		○	○	○		○	
	AUXD24LALH		○		○	○	○		○	
	AUXA30LALH		○		○	○	○	○		
	AUXA36LALH		○		○	○	○	○		
	AUXA45LALH		○		○	○	○	○		
	AUXA54LALH		○		○	○	○	○		
Compact Duct	ARXB07LALH									
	ARXB09LALH									
	ARXB12LALH									
	ARXB14LALH									
	ARXB18LALH									
Slim Duct	ARXD07LATH									
	ARXD09LATH									
	ARXD12LATH									
	ARXD14LATH									
	ARXD18LATH									
	ARXD24LATH									
Low Static Pressure Duct	ARXB24LATH									
	ARXB30LATH									
	ARXB36LATH									
	ARXB45LATH									
Duct	ARXA24LATH									
	ARXA30LATH									
	ARXA36LATH									
	ARXA45LATH									
High Static Pressure Duct	ARXC36LATH									
	ARXC45LATH									
Floor / Ceiling	AB*A12LBTH									
	AB*A14LBTH									
	AB*A18LBTH									
	AB*A24LBTH									
Ceiling	AB*A30LBTH									
	AB*A36LBTH									
	AB*A45LBTH									
	AB*A54LBTH									
Compact Wall Mounted (EEV internal)	AS*A07LACH									
	AS*A09LACH									
	AS*A12LACH									
	AS*A14LACH									
Compact Wall Mounted (EEV external)	AS*E07LACH									
	AS*E09LACH									
	AS*E12LACH									
	AS*E14LACH									
Wall Mounted	AS*A18LACH									
	AS*A24LACH									
	AS*A30LACH									

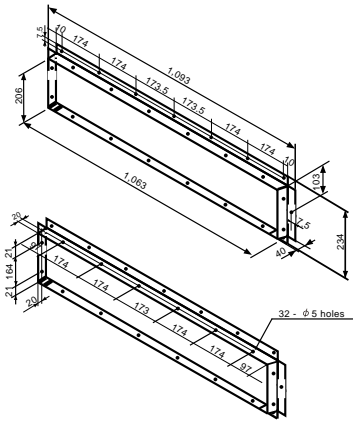
Type	Model name	Fresh air intake kit		IR receiver unit			Auto louver grille kit		
		UTZ-VXAA	UTZ-VXGA	UTY-LRH*B1	UTB-*WB	UTB-*WC	UTD-G*SA	UTD-G*SB	UTD-G*SC
Compact Cassette	AUXB07LALH	○							
	AUXB09LALH	○							
	AUXB12LALH	○							
	AUXB14LALH	○							
	AUXB18LALH	○							
	AUXB24LALH	○							
Cassette	AUXD18LALH		○	○					
	AUXD24LALH		○	○					
	AUXA30LALH		○	○					
	AUXA36LALH		○	○					
	AUXA45LALH		○	○					
	AUXA54LALH		○	○					
Compact Duct	ARXB07LALH				○	○			
	ARXB09LALH				○	○			
	ARXB12LALH				○	○			
	ARXB14LALH				○	○			
	ARXB18LALH				○	○			
Slim Duct	ARXD07LATH					○	○		
	ARXD09LATH					○	○		
	ARXD12LATH					○	○		
	ARXD14LATH					○	○		
	ARXD18LATH					○		○	
	ARXD24LATH					○			○
Low Static Pressure Duct	ARXB24LATH				○	○			
	ARXB30LATH				○	○			
	ARXB36LATH				○	○			
	ARXB45LATH				○	○			
Duct	ARXA24LATH				○	○			
	ARXA30LATH				○	○			
	ARXA36LATH				○	○			
	ARXA45LATH				○	○			
High Static Pressure Duct	ARXC36LATH				○	○			
	ARXC45LATH				○	○			
Floor / Ceiling	AB*A12LBTH								
	AB*A14LBTH								
	AB*A18LBTH								
	AB*A24LBTH								
Ceiling	AB*A30LBTH								
	AB*A36LBTH								
	AB*A45LBTH								
	AB*A54LBTH								
Compact Wall Mounted (EEV internal)	AS*A07LACH								
	AS*A09LACH								
	AS*A12LACH								
	AS*A14LACH								
Compact Wall Mounted (EEV external)	AS*E07LACH								
	AS*E09LACH								
	AS*E12LACH								
	AS*E14LACH								
Wall Mounted	AS*A18LACH								
	AS*A24LACH								
	AS*A30LACH								

Type	Model name	Long life filter		Flange		Drain pump unit			Remote sensor unit
		UTD-LF25NA	UTD-LF60KA	UTD-SF045T	UTD-RF204	UTZ-PX1BBA	UTZ-PX1NBA	UTR-DPB24T	UTD-RS100
Compact Cassette	AUXB07LALH								
	AUXB09LALH								
	AUXB12LALH								
	AUXB14LALH								
	AUXB18LALH								
	AUXB24LALH								
Cassette	AUXD18LALH								
	AUXD24LALH								
	AUXA30LALH								
	AUXA36LALH								
	AUXA45LALH								
	AUXA54LALH								
Compact Duct	ARXB07LALH					○			○
	ARXB09LALH					○			○
	ARXB12LALH					○			○
	ARXB14LALH					○			○
	ARXB18LALH					○			○
Slim Duct	ARXD07LATH								○
	ARXD09LATH								○
	ARXD12LATH								○
	ARXD14LATH								○
	ARXD18LATH								○
	ARXD24LATH								○
Low Static Pressure Duct	ARXB24LATH	○		○	○		○		○
	ARXB30LATH	○		○	○		○		○
	ARXB36LATH	○		○	○		○		○
	ARXB45LATH	○		○	○		○		○
Duct	ARXA24LATH	○		○	○		○		○
	ARXA30LATH	○		○	○		○		○
	ARXA36LATH	○		○	○		○		○
	ARXA45LATH	○		○	○		○		○
High Static Pressure Duct	ARXC36LATH		○						○
	ARXC45LATH		○						○
Floor / Ceiling	AB*A12LBTH								
	AB*A14LBTH								
	AB*A18LBTH								
	AB*A24LBTH								
Ceiling	AB*A30LBTH				○			○	
	AB*A36LBTH				○			○	
	AB*A45LBTH				○			○	
	AB*A54LBTH				○			○	
Compact Wall Mounted (EEV internal)	AS*A07LACH								
	AS*A09LACH								
	AS*A12LACH								
	AS*A14LACH								
Compact Wall Mounted (EEV external)	AS*E07LACH								
	AS*E09LACH								
	AS*E12LACH								
	AS*E14LACH								
Wall Mounted	AS*A18LACH								
	AS*A24LACH								
	AS*A30LACH								

Type	Model name	EV kit	
		UTR- EV09XB	UTR- EV14XB
Compact Cassette	AUXB07LALH		
	AUXB09LALH		
	AUXB12LALH		
	AUXB14LALH		
	AUXB18LALH		
	AUXB24LALH		
Cassette	AUXD18LALH		
	AUXD24LALH		
	AUXA30LALH		
	AUXA36LALH		
	AUXA45LALH		
	AUXA54LALH		
Compact Duct	ARXB07LALH		
	ARXB09LALH		
	ARXB12LALH		
	ARXB14LALH		
	ARXB18LALH		
Slim Duct	ARXD07LATH		
	ARXD09LATH		
	ARXD12LATH		
	ARXD14LATH		
	ARXD18LATH		
	ARXD24LATH		
Low Static Pressure Duct	ARXB24LATH		
	ARXB30LATH		
	ARXB36LATH		
	ARXB45LATH		
Duct	ARXA24LATH		
	ARXA30LATH		
	ARXA36LATH		
	ARXA45LATH		
High Static Pressure Duct	ARXC36LATH		
	ARXC45LATH		
Floor / Ceiling	AB*A12LBTH		
	AB*A14LBTH		
	AB*A18LBTH		
	AB*A24LBTH		
Ceiling	AB*A30LBTH		
	AB*A36LBTH		
	AB*A45LBTH		
	AB*A54LBTH		
Compact Wall Mounted (EEV internal)	AS*A07LACH		
	AS*A09LACH		
	AS*A12LACH		
	AS*A14LACH		
Compact Wall Mounted (EEV external)	AS*E07LACH	○	
	AS*E09LACH	○	
	AS*E12LACH		○
	AS*E14LACH		○
Wall Mounted	AS*A18LACH		
	AS*A24LACH		
	AS*A30LACH		

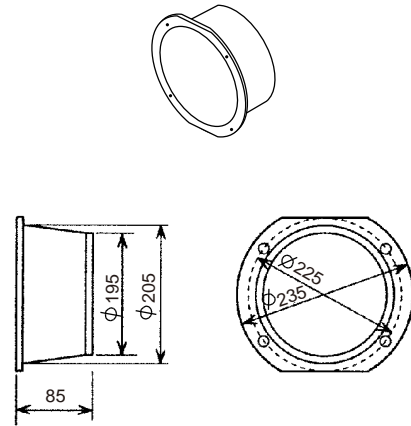
■ FLANGE (Square)

- UTD-SF045T
 - For Low Static Pressure Duct type/ Duct type



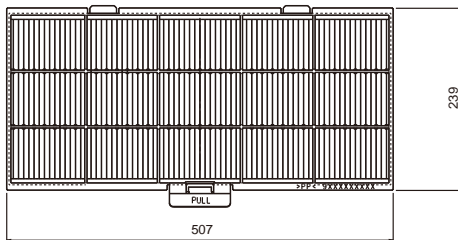
■ FLANGE (Round)

- UTD-RF204
 - For Low Static Pressure Duct type/ Duct type



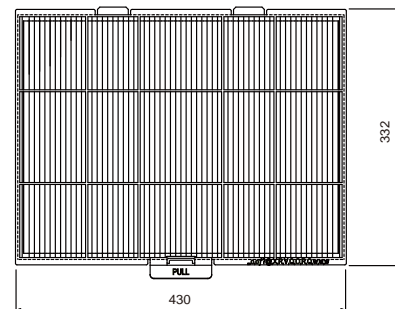
■ LONG-LIFE FILTER

- UTD-LF25NA
 - For Low Static Pressure Duct type/ Duct type



■ LONG-LIFE FILTER

- UTD-LF60KA
 - For High Static Pressure Duct type



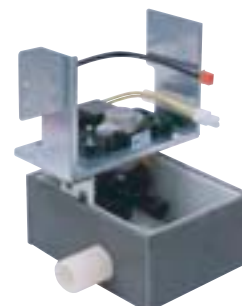
■ DRAIN PUMP UNIT

- UTZ-PX1BBA
 - For Compact Duct type
- UTZ-PX1NBA
 - For Low Static Pressure Duct type/ Duct type



■ DRAIN PUMP UNIT

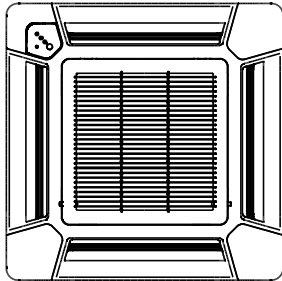
- UTR-DPB24T
 - For Ceiling type



■ GRILLE KIT

- UTG-UF*C-W

- For Compact Cassette type

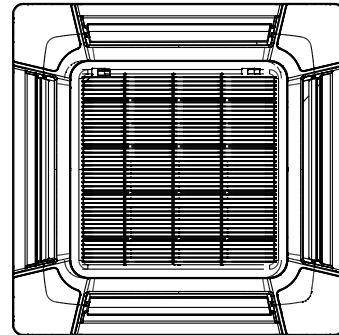


*IR receiver attached

■ GRILLE KIT

- UTG-UG*A-W

- For Cassette type



■ AIR OUTLET SHUTTER PLATE

- UTR-YDZB

- For Compact Cassette type



■ AIR OUTLET SHUTTER PLATE

- UTR-YDZC

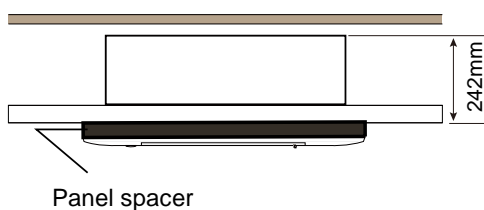
- For Cassette type



■ PANEL SPACER

- UTG-BGYA-W

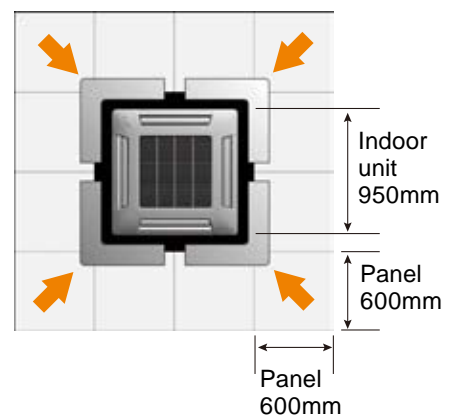
- For Cassette type



■ WIDE PANEL

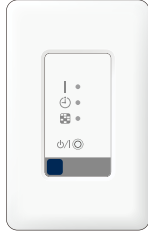
- UTG-AGYA-W

- For Cassette type



■ IR RECEIVER UNIT

- UTB-~~*~~WB
 - For All Duct type (Except for Slim Duct type)
- UTB-~~*~~WC
 - For All Duct type



The wireless remote controller (Model: UTY-LNH*) is necessary separately

■ IR RECEIVER UNIT

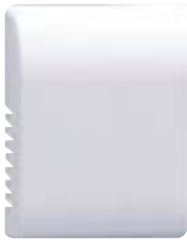
- UTY-LRH*B1
 - For Cassette type



The wireless remote controller (Model: UTY-LNH*) is necessary separately

■ REMOTE SENSOR UNIT

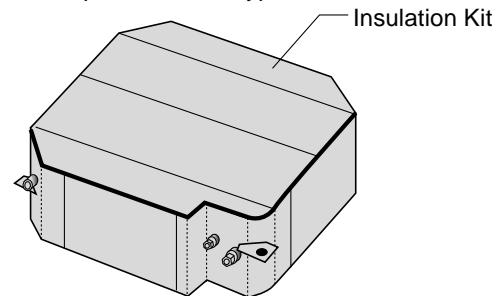
- UTD-RS100



New amenity space can be offered by installing the Remote sensor

■ INSULATION KIT for High Humidity

- UTZ-KXGA
 - For Cassette type
- UTZ-KXGB
 - For Slim Cassette type
- UTZ-KXGC
 - For Compact Cassette type



■ FRESH AIR INTAKE KIT

- UTZ-VXAA
 - For Compact Cassette type



■ FRESH AIR INTAKE KIT

- UTZ-VXGA
 - For Cassette type



■ AUTO LOUVER GRILLE KIT

- UTD-GXSA-W
For Slim duct (07-14 models)
- UTD-GXSB-W
For Slim duct (18 model)
- UTD-GXSC-W
For Slim duct (24 model)

