



AGS6000

Air curtain for doors in industrial and large premises, with intelligent control

- Recommended installation height 6 m*
 - Horizontal mounting
 - Lengths: 1, 1,5, 2, 2,5 and 3 m
- ✪ Ambient, no heat
- 💧 Water heat WL

Application

AGS6000 is a powerful air curtain intended for industrial doors but it can also be used for entryways in other large premises such as shopping malls.

With its many clever, energy saving functions, the air curtain gives effective protection, specially adapted for your door.

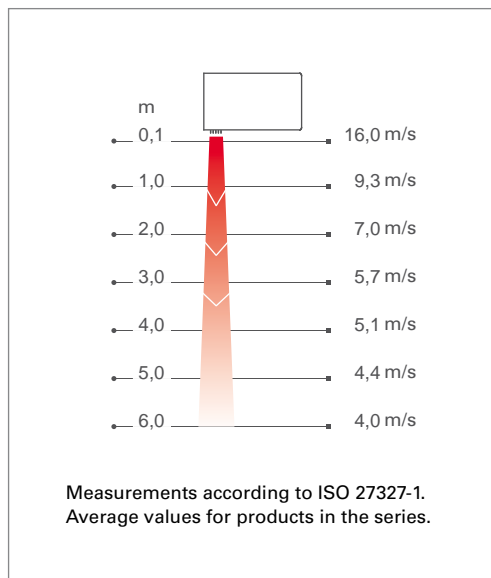
Design

AGS6000 has a timeless, clean design. The air curtain is intended for horizontal installation, models for vertical and recessed installation are available for special order.



Optimized airflow with Thermozone technology.

Air velocity profile



Product specifications

- Prepared for the SIRE control system whose pre-programmed default settings and many features make it easy to install and use the air curtain. Read more about the SIRE controls package in the "Controls" section.
- The following models are available for special order:
 - with electrical heating
 - with water coil WH for high water temperatures
 - with alternative water connections
 - for vertical installation
 - for recessed installation in suspended ceilings
- Intake grilles that can be opened make it easy to access the water coil. The grille is easy to clean from the outside.
- Adjustable outlet grille makes it possible to direct the air for optimum air curtain effect.
- Corrosion proof housing made of hot zinc-plate and powder enamelled steel panels. Colour: white, RAL 9016, NCS S 0500-N. Colour grille: grey, RAL 7046.

*) Recommended installation height varies depending on the relevant premises.

Technical specifications

✿ Ambient, no heat - AGS6000 A

| Type | Output [kW] | Airflow* ¹ [m ³ /h] | Sound level* ² [dB(A)] | Voltage motor [V] | Amperage motor [A] | Length [mm] | Weight [kg] |
|----------|----------------|--|---|-------------------------|--------------------------|----------------|----------------|
| AGS6010A | 0 | 2350/4700 | 48/67 | 230V~ | 5,0 | 1010 | 80 |
| AGS6015A | 0 | 3550/7100 | 50/69 | 230V~ | 7,5 | 1515 | 115 |
| AGS6020A | 0 | 4650/9300 | 51/70 | 230V~ | 9,5 | 2010 | 145 |
| AGS6025A | 0 | 5800/11600 | 52/71 | 230V~ | 12,2 | 2520 | 180 |
| AGS6030A | 0 | 6500/13000 | 54/73 | 230V~ | 14,2 | 3030 | 210 |

💧 Water heat - AGS6000 WL, coil for low water temperature (≤80 °C)

| Type | Output* ⁴ [kW] | Airflow* ¹ [m ³ /h] | Δt* ^{3,4} [°C] | Water volume [l] | Sound level* ² [dB(A)] | Voltage motor [V] | Amperage motor [A] | Length [mm] | Weight [kg] |
|-----------|------------------------------|--|----------------------------|------------------------|---|-------------------------|--------------------------|----------------|----------------|
| AGS6010WL | 24,5 | 2100/4200 | 22/17 | 3,8 | 47/66 | 230V~ | 4,8 | 1010 | 95 |
| AGS6015WL | 29,9 | 3250/6500 | 18/14 | 4,0 | 49/68 | 230V~ | 7,2 | 1515 | 135 |
| AGS6020WL | 46,7 | 4250/8500 | 21/16 | 8,1 | 50/69 | 230V~ | 9,1 | 2010 | 170 |
| AGS6025WL | 57,7 | 5300/10600 | 21/16 | 9,2 | 51/70 | 230V~ | 11,7 | 2520 | 210 |
| AGS6030WL | 68,0 | 6300/12600 | 21/16 | 11,0 | 53/72 | 230V~ | 13,6 | 3030 | 250 |

*¹) Lowest/highest airflow of totally 5 fan steps.

*²) Conditions: Distance to the unit 5 metres. Directional factor: 2. Equivalent absorption area: 200 m². At lowest/highest airflow.

*³) Δt = temperature rise of passing air at maximum heat output and lowest/highest airflow.

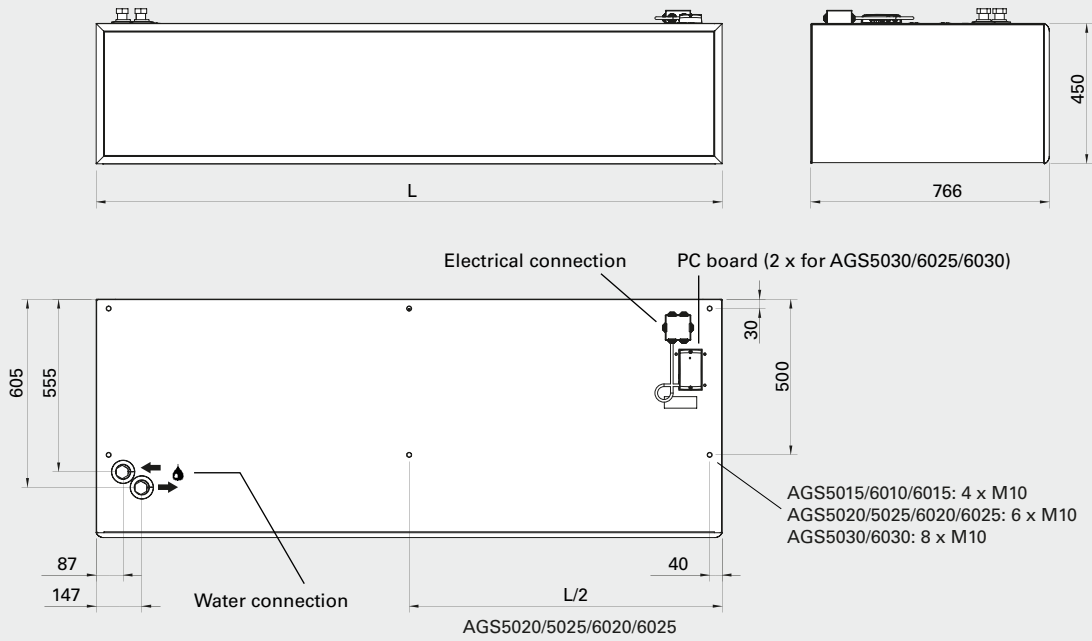
*⁴) Applicable at water temperature 60/40 °C, air temperature, in +18 °C.

Protection class: IP23.

CE compliant.

AGS6000

Dimensions



| | L [mm] |
|----------------|-----------|
| AGS6010 | 1010 |
| AGS6015 | 1515 |
| AGS6020 | 2010 |
| AGS6025 | 2520 |
| AGS6030 | 3030 |

Connection dimensions, inside thread

| | WL | WH |
|----------------|---------------|---------------|
| AGS6010 | DN25 (1") | DN25 (1") |
| AGS6015 | DN25 (1") | DN20 (3/4") |
| AGS6020 | DN32 (1 1/4") | DN25 (1") |
| AGS6025 | DN32 (1 1/4") | DN32 (1 1/4") |
| AGS6030 | DN40 (1 1/2") | DN32 (1 1/4") |

Mounting and connection

Mounting

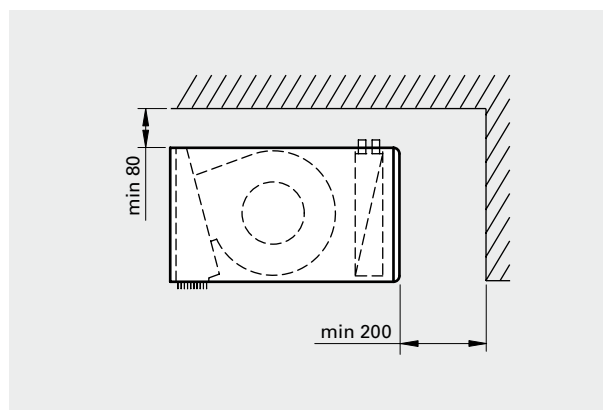
The air curtain is installed horizontally with the supply air grille facing downwards as close to the door as possible. A variety of installation options are available; brackets for wall mounting or threaded bars for ceiling mounting.

Design package for an installation with concealed mountings, cables and pipes is available as an option.

For the protection of wider doorways, several units can be mounted next to each other.

Connection

The PC board SIRE is built into the air curtain on delivery and is equipped with modular connectors for easy connection of external components. Read more about the SIRE control system in the "Controls" section.



Minimum distances

Unit without heating

Operation (230V~) is connected to terminal block in the junction box on top of the unit.

Unit with water heating

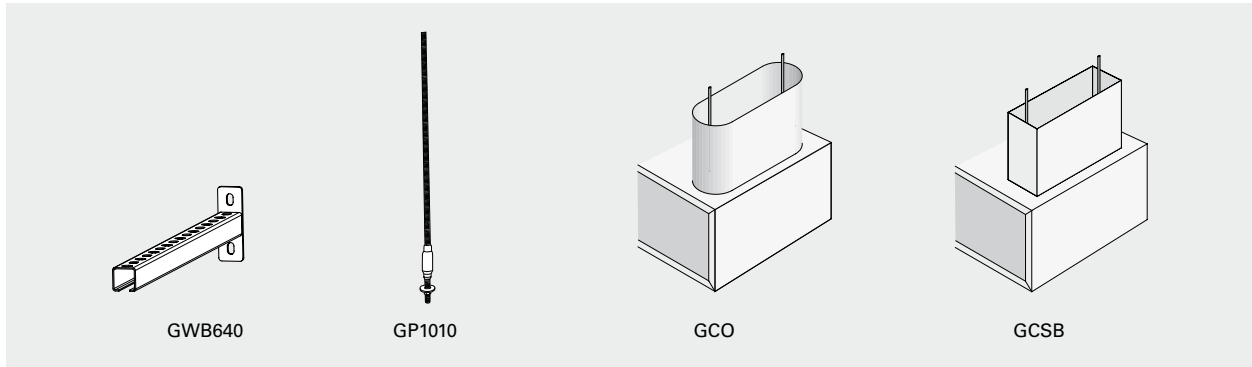
Operation (230V~) is connected to terminal block in the junction box on top of the unit.

The water coil is connected via connections with dimensions as given in the table (see diagram) on top of the unit.



AGS6000

Accessories



GWB640, wall bracket

Brackets for installing unit horizontally on a wall. Two are required for 1 and 1.5 metre units, while 2 and 2.5 metre units need three and 3 metre units need four.

GP1010, threaded bar

Threaded bar for mounting in ceilings. Length 1 m. M10. Four are required for 1 and 1.5 metre units, while 2 and 2.5 metre units need six and 3 metre units need eight.

GCO, oval design kit

Used to conceal mountings, cables and pipes. Special order to required dimension.

GCSB, square design kit

Used to conceal mountings, cables and pipes. Special order to required dimension.

| Type | Description | Quantity included | Length |
|---------------|-------------------|-------------------|--------|
| GWB640 | Wall bracket | 1 pc | 400 mm |
| GP1010 | Threaded bar | 1 pc | 1 m |
| GCO | Oval design kit | | |
| GCSB | Square design kit | | |

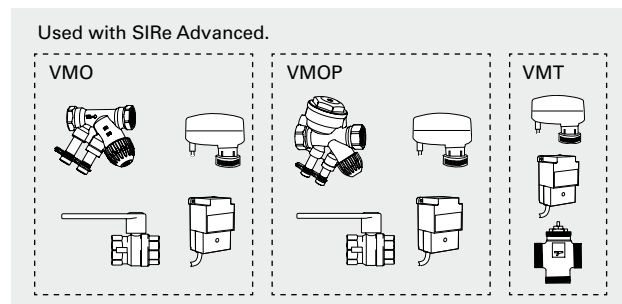
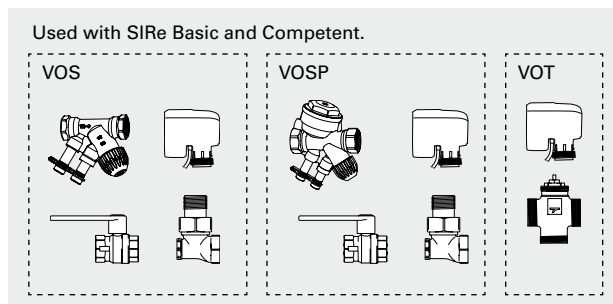
Controls



This air curtain is supplied with an integrated PC board SIRE. There are three different levels with different functionality to choose from, Basic, Competent or Advanced. Read more about the SIRE control system in the "Controls" section.

| Type | Description |
|---------------|-------------------------------|
| SIREB | Control system SIRE Basic |
| SIREAC | Control system SIRE Competent |
| SIREAA | Control system SIRE Advanced |

Water control



Valve kit VOS(P), VOT, VMO(P) or VMT is used to control the water flow. For more information see the "Controls" section.

| Type | Description |
|-----------------|---|
| VOS15LF | Valve kit on/off, low flow, DN15 |
| VOS15NF | Valve kit on/off, DN15 |
| VOS20 | Valve kit on/off, DN20 |
| VOS25 | Valve kit on/off, DN25 |
| VOSP15LF | Pressure independent valve kit, low flow, DN15 |
| VOSP15NF | Pressure independent valve kit, DN15 |
| VOSP20 | Pressure independent valve kit, DN20 |
| VOSP25 | Pressure independent valve kit, DN25 |
| VOT15 | Three way control valve and actuator on/off, DN15 |
| VOT20 | Three way control valve and actuator on/off, DN20 |
| VOT25 | Three way control valve and actuator on/off, DN25 |

| Type | Description |
|-----------------|---|
| VMO15LF | Modulating valve kit, low flow, DN15 |
| VMO15NF | Modulating valve kit, DN15 |
| VMO20 | Modulating valve kit, DN20 |
| VMO25 | Modulating valve kit, DN25 |
| VMOP15LF | Pressure independent and modulating valve kit, low flow, DN15 |
| VMOP15NF | Pressure independent and modulating valve kit, DN15 |
| VMOP20 | Pressure independent and modulating valve kit, DN20 |
| VMOP25 | Pressure independent and modulating valve kit, DN25 |
| VMT15 | Three way control valve and modulating actuator, DN15 |
| VMT20 | Three way control valve and modulating actuator, DN20 |
| VMT25 | Three way control valve and modulating actuator, DN25 |

AGS6000

Output charts water

| | | | Supply water temperature: 80 °C Room temperature: +18 °C Outlet air temperature: +35 °C*1 | | | | Water temperature: 80/60 °C Room temperature: +18 °C | | | |
|-----------|--------------|----------------|---|-------------------------|------------------|---------------------|---|-----------------------|------------------|---------------------|
| Type | Fan position | Airflow [m³/h] | Output [kW] | Return water temp. [°C] | Water flow [l/s] | Pressure drop [kPA] | Output*2 [kW] | Outlet air temp. [°C] | Water flow [l/s] | Pressure drop [kPA] |
| AGS6010WL | max | 4200 | 24,0 | 32,5 | 0,12 | 1,1 | 42,3 | 47,9 | 0,52 | 13,2 |
| | min | 2100 | 12,0 | 31,5 | 0,06 | 0,3 | 26,4 | 55,3 | 0,32 | 5,7 |
| AGS6015WL | max | 6500 | 37,2 | 41,7 | 0,24 | 2,0 | 52,4 | 42,0 | 0,64 | 12,1 |
| | min | 3250 | 18,6 | 33,8 | 0,10 | 0,4 | 33,9 | 49,0 | 0,41 | 5,5 |
| AGS6020WL | max | 8500 | 48,6 | 33,2 | 0,25 | 2,5 | 79,4 | 45,8 | 0,97 | 26,0 |
| | min | 4250 | 24,4 | 27,9 | 0,11 | 0,6 | 49,9 | 52,9 | 0,61 | 11,3 |
| AGS6025WL | max | 10600 | 60,6 | 33,1 | 0,31 | 4,2 | 97,8 | 45,4 | 1,19 | 42,9 |
| | min | 5300 | 30,3 | 26,0 | 0,14 | 1,0 | 61,6 | 52,5 | 0,75 | 18,7 |
| AGS6030WL | max | 12600 | 72,0 | 34,0 | 0,38 | 3,1 | 116,2 | 45,4 | 1,42 | 33,7 |
| | min | 6300 | 36,0 | 28,7 | 0,17 | 0,6 | 73,0 | 52,4 | 0,89 | 14,2 |

| | | | Supply water temperature: 70 °C Room temperature: +18 °C Outlet air temperature: +35 °C*1 | | | | Water temperature: 70/50 °C Room temperature: +18 °C | | | |
|-----------|--------------|----------------|---|-------------------------|------------------|---------------------|---|-----------------------|------------------|---------------------|
| Type | Fan position | Airflow [m³/h] | Output [kW] | Return water temp. [°C] | Water flow [l/s] | Pressure drop [kPA] | Output*2 [kW] | Outlet air temp. [°C] | Water flow [l/s] | Pressure drop [kPA] |
| AGS6010WL | max | 4200 | 24,0 | 35,5 | 0,17 | 1,9 | 33,5 | 41,7 | 0,41 | 8,9 |
| | min | 2100 | 12,0 | 31,4 | 0,08 | 0,8 | 21,0 | 47,7 | 0,26 | 7,2 |
| AGS6015WL | max | 6500 | 37,2 | 45,0 | 0,36 | 4,4 | 41,3 | 36,9 | 0,50 | 8,0 |
| | min | 3250 | 18,6 | 34,5 | 0,13 | 0,7 | 26,8 | 42,5 | 0,33 | 3,7 |
| AGS6020WL | max | 8500 | 48,6 | 36,8 | 0,36 | 4,6 | 63,1 | 40,1 | 0,77 | 17,6 |
| | min | 4250 | 24,4 | 28,8 | 0,14 | 1,0 | 39,7 | 45,8 | 0,48 | 7,7 |
| AGS6025WL | max | 10600 | 60,6 | 37,0 | 0,44 | 7,8 | 77,8 | 39,8 | 0,95 | 29,2 |
| | min | 5300 | 30,3 | 28,2 | 0,18 | 1,6 | 49,1 | 45,5 | 0,60 | 12,9 |
| AGS6030WL | max | 12600 | 72,0 | 37,7 | 0,54 | 6,0 | 92,1 | 39,7 | 1,12 | 22,3 |
| | min | 6300 | 36,0 | 29,5 | 0,21 | 1,0 | 58,1 | 45,4 | 0,71 | 7,6 |

| | | | Supply water temperature: 60 °C Room temperature: +18 °C Outlet air temperature: +35 °C*1 | | | | Water temperature: 60/40 °C Room temperature: +18 °C | | | |
|-----------|--------------|----------------|---|-------------------------|------------------|---------------------|---|-----------------------|------------------|---------------------|
| Type | Fan position | Airflow [m³/h] | Output [kW] | Return water temp. [°C] | Water flow [l/s] | Pressure drop [kPA] | Output*2 [kW] | Outlet air temp. [°C] | Water flow [l/s] | Pressure drop [kPA] |
| AGS6010WL | max | 4200 | 24,0 | 39,4 | 0,28 | 4,8 | 24,5 | 35,3 | 0,30 | 5,3 |
| | min | 2100 | 12,0 | 31,6 | 0,10 | 1,0 | 15,5 | 39,9 | 0,19 | 4,1 |
| AGS6015WL | max | 6500 | 37,2 | 49,2 | 0,83 | 20,2 | 29,9 | 31,6 | 0,36 | 4,6 |
| | min | 3250 | 18,6 | 38,0 | 0,21 | 1,7 | 19,6 | 35,9 | 0,24 | 2,2 |
| AGS6020WL | max | 8500 | 48,6 | 41,8 | 0,65 | 13,5 | 46,7 | 34,3 | 0,56 | 10,6 |
| | min | 4250 | 24,3 | 31,8 | 0,21 | 1,9 | 29,9 | 38,9 | 0,36 | 4,8 |
| AGS6025WL | max | 10600 | 60,6 | 42,2 | 0,83 | 23,6 | 57,7 | 34,2 | 0,70 | 17,6 |
| | min | 5300 | 30,3 | 32,0 | 0,26 | 3,2 | 37,1 | 38,8 | 0,45 | 8,1 |
| AGS6030WL | max | 12600 | 72,0 | 42,5 | 1,00 | 18,4 | 68,0 | 34,0 | 0,82 | 13,0 |
| | min | 6300 | 36,0 | 32,6 | 0,32 | 2,0 | 43,6 | 38,5 | 0,53 | 4,7 |

| | | | Supply water temperature: 55 °C Room temperature: +18 °C Outlet air temperature: +35 °C*1 | | | | Water temperature: 55/35 °C Room temperature: +18 °C | | | |
|-----------|--------------|----------------|---|-------------------------|------------------|---------------------|---|-----------------------|------------------|---------------------|
| Type | Fan position | Airflow [m³/h] | Output [kW] | Return water temp. [°C] | Water flow [l/s] | Pressure drop [kPA] | Output*2 [kW] | Outlet air temp. [°C] | Water flow [l/s] | Pressure drop [kPA] |
| AGS6010WL | max | 4200 | 24,0 | 41,7 | 0,44 | 10,6 | 19,9 | 32,1 | 0,24 | 3,7 |
| | min | 2100 | 12,0 | 33,0 | 0,13 | 2,2 | 12,8 | 36,1 | 0,16 | 2,9 |
| AGS6015WL | max | 6500 | – | – | – | – | 24,0 | 29,0 | 0,29 | 3,1 |
| | min | 3250 | 18,6 | 40,2 | 0,30 | 3,4 | 15,9 | 32,6 | 0,19 | 1,5 |
| AGS6020WL | max | 8500 | 48,6 | 45,0 | 1,18 | 39,4 | 38,4 | 31,4 | 0,46 | 7,7 |
| | min | 4250 | 24,4 | 34,3 | 0,28 | 3,2 | 24,7 | 35,3 | 0,30 | 3,5 |
| AGS6025WL | max | 10600 | 60,6 | 45,7 | 1,58 | 75,7 | 47,6 | 31,3 | 0,58 | 12,8 |
| | min | 5300 | 30,3 | 34,5 | 0,36 | 5,5 | 30,7 | 35,2 | 0,37 | 5,9 |
| AGS6030WL | max | 12600 | 72,0 | 45,7 | 1,88 | 59,6 | 55,9 | 31,2 | 0,68 | 9,2 |
| | min | 6300 | 36,0 | 35,1 | 0,44 | 3,4 | 36,0 | 35,0 | 0,44 | 3,4 |

– = at the current water temperatures and airflows, the air outlet temperature will be less than 35 °C.

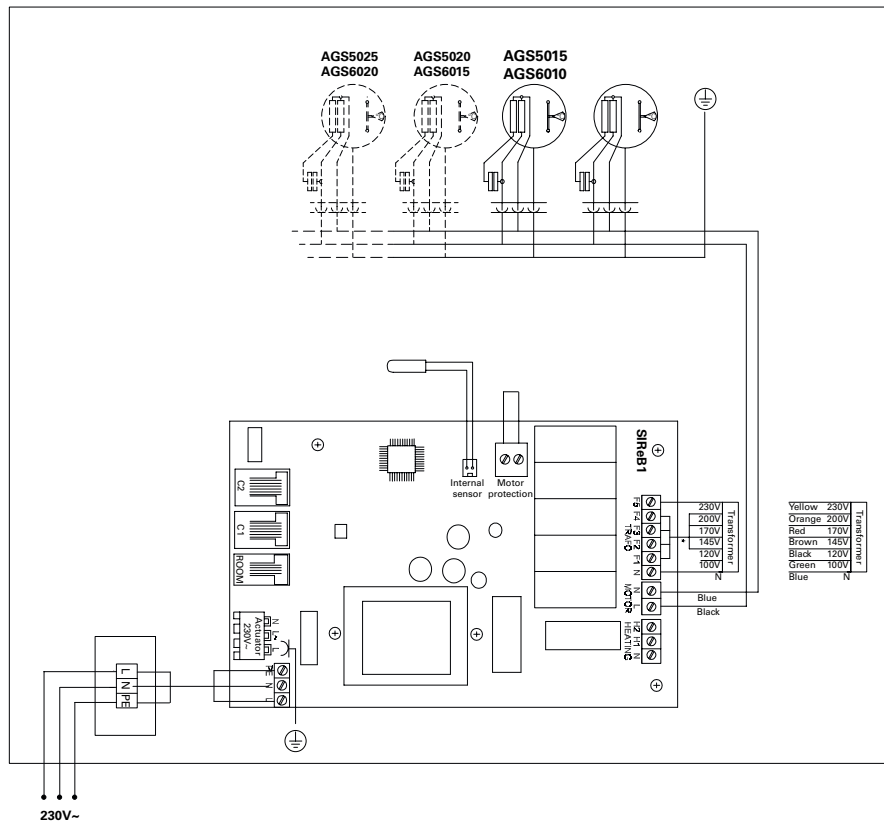
*1) Recommended outlet air temperature for good comfort and optimized output.

*2) Nominal output at given supply and return water temperature.

Wiring diagrams

Internal wiring diagram

AGS6010/6015/6020



AGS6025/6030

