

**FlowCon Green with AB**  
**DN25/32 · 1", 1 1/4"**

No. Reference no. Description

**Valve body**

① ABxx.l Valve body

**Insert**

② Green.2 Green insert

**Actuators**

③ FT.x.x Thermal actuator  
incl. (3a) adaptor ring

④ FN.x.x Electrical actuator  
incl. (4a) valve adaptor

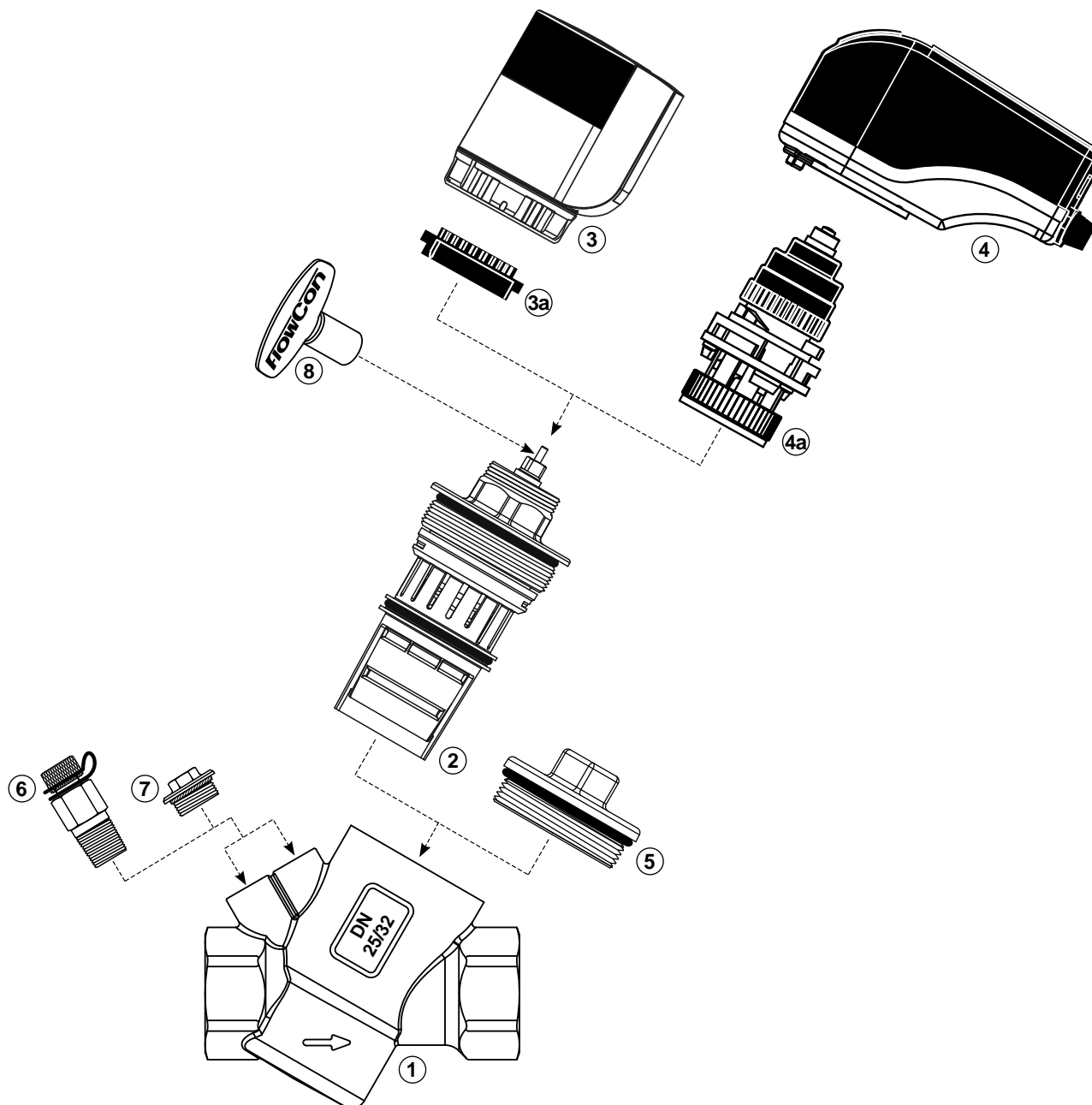
**Accessories**

⑤ ACC0081 Blind cap

⑥ 2 x ACC00101 P/t plug

⑦ 2 x ACC1B03000 Plug

⑧ ACC0001 Adjustment key



**FlowCon Green with ABV2**  
DN25/32/40 · 1", 1 1/4", 1 1/2"

No. Reference no. Description

**Valve body**

① ABV2 Valve body

**Insert**

② Green.2 Green insert

**Actuators**

③ FT.x.x Thermal actuator  
incl. (3a) adaptor ring  
④ FN.x.x Electrical actuator  
incl. (4a) valve adaptor

**Accessories**

⑤ ACC0081 Blind cap  
⑥ 1C000xx Male union end conn.  
25-40mm (1"-1 1/2")  
⑦ 1C000xx Female union end conn.  
25-40mm (1"-1 1/2")  
⑧ 1C000xx Sweat union end conn.  
28-35mm  
⑨ 2 x ACC00101 P/t plug  
⑩ 2 x ACC1B03000 Plug  
⑪ ACC0001 Adjustment key

