

FlowCon AB
DN15/20/25 · 1/2", 3/4", 1"

No. Reference no. Description

Valve bodies

- ① ABxx.I Valve body
- ①* AB25.I.K Valve body (not shown)

Cartridges

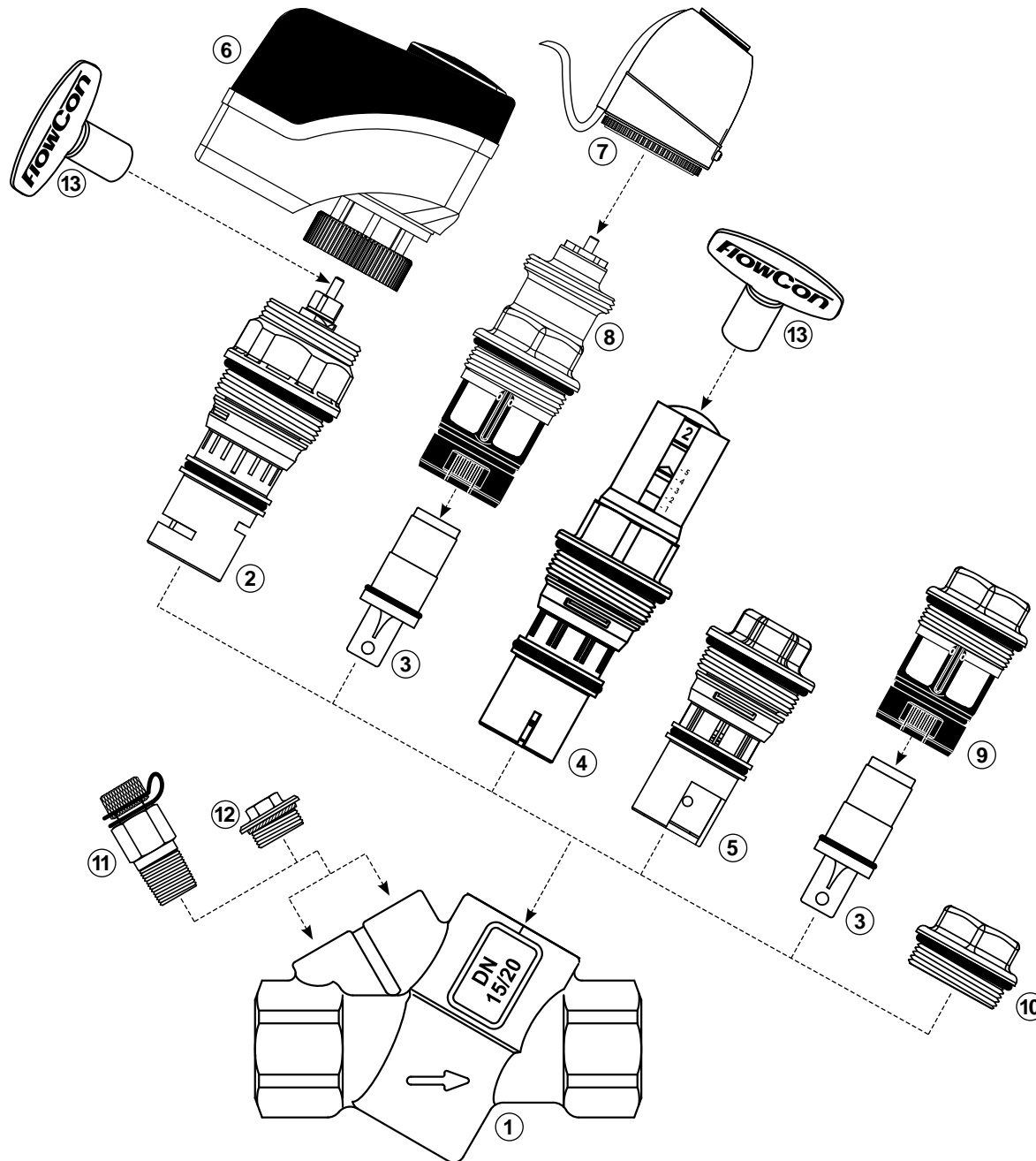
- ② SME.x SME cartridge
- ③ F360xxx SS cartridge
- ④ E-JUST1.x.x E-JUST cartridge
- ⑤ ABV1.x.x Composite cartridge

Actuators

- ⑥ FM.x.x Electrical actuator
- ⑥* FB.x.x Electrical actuator (not shown)
- ⑥* FT.x.x Thermal actuator (not shown)
- ⑦ EV.x.x Thermal actuator

Accessories

- ⑧ EVS.0.0.0 EVS insert
- ⑨ ACC0150 Adaptor for SS cartridge
- ⑩ ACC0080 Blind cap
- ⑪ 2 x ACC00101 P/t plug
- ⑫ 2 x ACC1B03000 Plug
- ⑬ ACC0001 Adjustment key



FlowCon AB
DN25/32 · 1", 1 1/4"

No. Reference no. Description

Valve body

① ABxx.l Valve body

Cartridges

② E-JUST2.Y.G E-JUST cartridge

③ ABV2.x.x Composite cartridge

④ F361xxx SS cartridge

Accessories

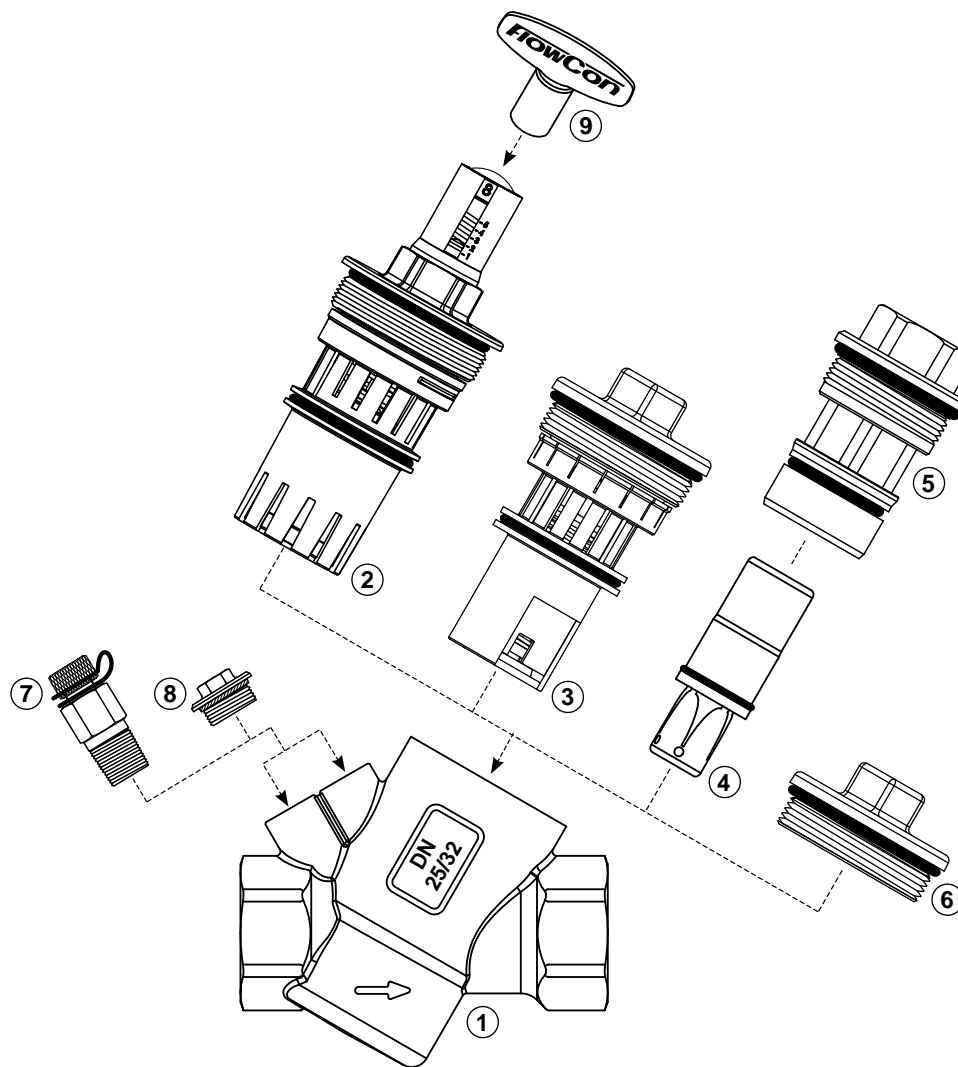
⑤ ACC0160 Adaptor for SS cartridge

⑥ ACC0081 Blind cap

⑦ 2 x ACC00101 P/t plug

⑧ 2 x ACC1B03000 Plug

⑨ ACC0001 Adjustment key



FlowCon AB
DN40/50 · 1 1/2", 2"

No. Reference no. Description

Valve body

① ABxx.I Valve body

Cartridge

② E-JUST3.G.B E-JUST cartridge

Accessories

③ ACC0084 Blind cap

④ 2 x ACC00101 P/t plug

⑤ 2 x ACC1B03000 Plug

⑥ ACC0001 Adjustment key

