

FlowCon ABV1
DN15/20/25 · 1/2", 3/4", 1"

No. Reference no. Description

Valve body

① ABV1 Valve body

Cartridges

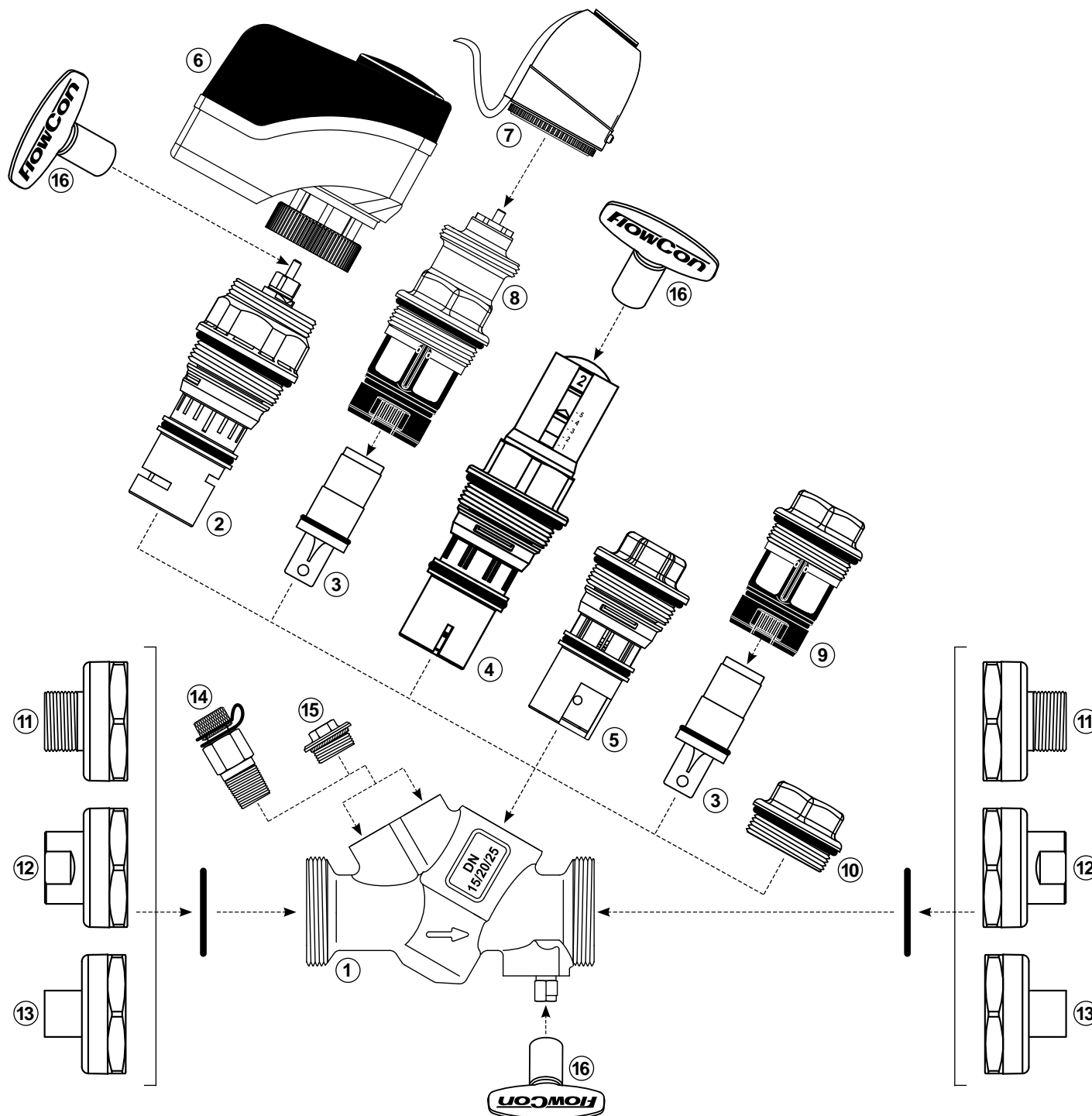
② SME.x SME cartridge
③ F360xxx SS cartridge
④ E-JUST1.x.x E-JUST cartridge
⑤ ABV1.x.x Composite cartridge

Actuators

⑥ FM.x.x Electrical actuator
⑥* FB.x.x Electrical actuator (not shown)
⑥* FT.x.x Thermal actuator (not shown)
⑦ EV.x.x Thermal actuator

Accessories

⑧ ACC0150 EVS insert
⑨ EVS.0.0.0 Adaptor for SS cartridge
⑩ ACC0080 Blind cap
⑪ 1C000xx Male union end conn. 15-25mm (1/2"-1")
⑫ 1C000xx Female union end conn. 15-20mm (1/2"-3/4")
⑬ 1C000xx Sweat union end conn. 15-22mm
⑭ 2 x ACC00101 P/t plug
⑮ 2 x ACC1B03000 Plug
⑯ ACC0001 Adjustment key



FlowCon ABV2
DN25/32/40 · 1", 1 1/4", 1 1/2"

No. Reference no. Description

Valve body

① ABV2 Valve body

Cartridges

② E-JUST2.Y.G E-JUST cartridge
③ ABV2.x.x Composite cartridge
④ F361xxx SS cartridge

Accessories

⑤ ACC0160 Adaptor for SS cartridge
⑥ ACC0081 Blind cap
⑦ 1C000xx Male union end conn. 25-40mm (1"-1 1/2")
⑧ 1C000xx Female union end conn. 25-40mm (1"-1 1/2")
⑨ 1C000xx Sweat union end conn. 28-35mm
⑩ 2 x ACC00101 P/t plug
⑪ 2 x ACC1B03000 Plug
⑫ ACC0001 Adjustment key

