

FlowCon ABM1
DN15/20/25 · 1/2", 3/4", 1"

No. Reference no. Description

Valve body

① ABM1.x Valve body

Cartridges

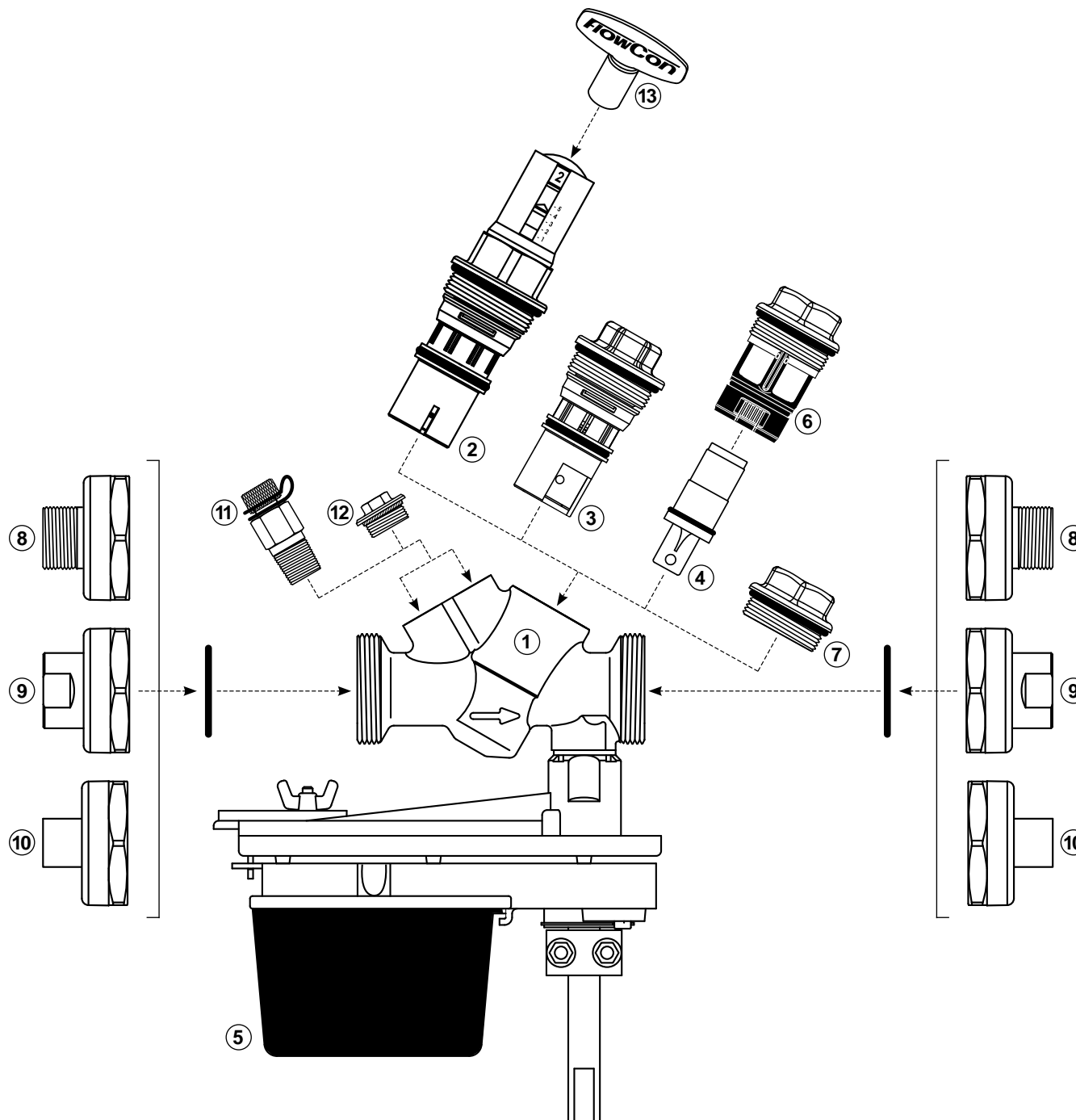
② E-JUST1.x.x E-JUST cartridge
③ ABV1.x.x Composite cartridge
④ F360xxx SS cartridge

Actuator

⑤ BBxxxx Electrical actuator

Accessories

⑥ ACC0150 Adaptor for SS cartridge
⑦ ACC0080 Blind cap
⑧ 1C000xx Male union end conn. 15-25mm (1/2"-1")
⑨ 1C000xx Female union end conn. 15-20mm (1/2"-3/4")
⑩ 1C000xx Sweat union end conn. 15-22mm
⑪ 2 x ACC00101 P/t plug
⑫ 2 x ACC1B03000 Plug
⑬ ACC0001 Adjustment key



FlowCon ABM2
DN25/32/40 · 1", 1 1/4", 1 1/2"

No. Reference no. Description

Valve body

① ABM2.x Valve body

Cartridges

② E-JUST2.Y.G E-JUST cartridge
③ ABV2.x.x Composite cartridge
④ F361xxx SS cartridge

Actuator

⑤ BBxxxx Electrical actuator

Accessories

⑥ ACC0160 Adaptor for SS cartridge
⑦ ACC0081 Blind cap
⑧ 1C000xx Male union end conn. 25-40mm (1"-1 1/2")
⑨ 1C000xx Female union end conn. 25-40mm (1"-1 1/2")
⑩ 1C000xx Sweat union end conn. 28-35mm
⑪ 2 x ACC00101 P/t plug
⑫ 2 x ACC1B03000 Plug
⑬ ACC0001 Adjustment key

